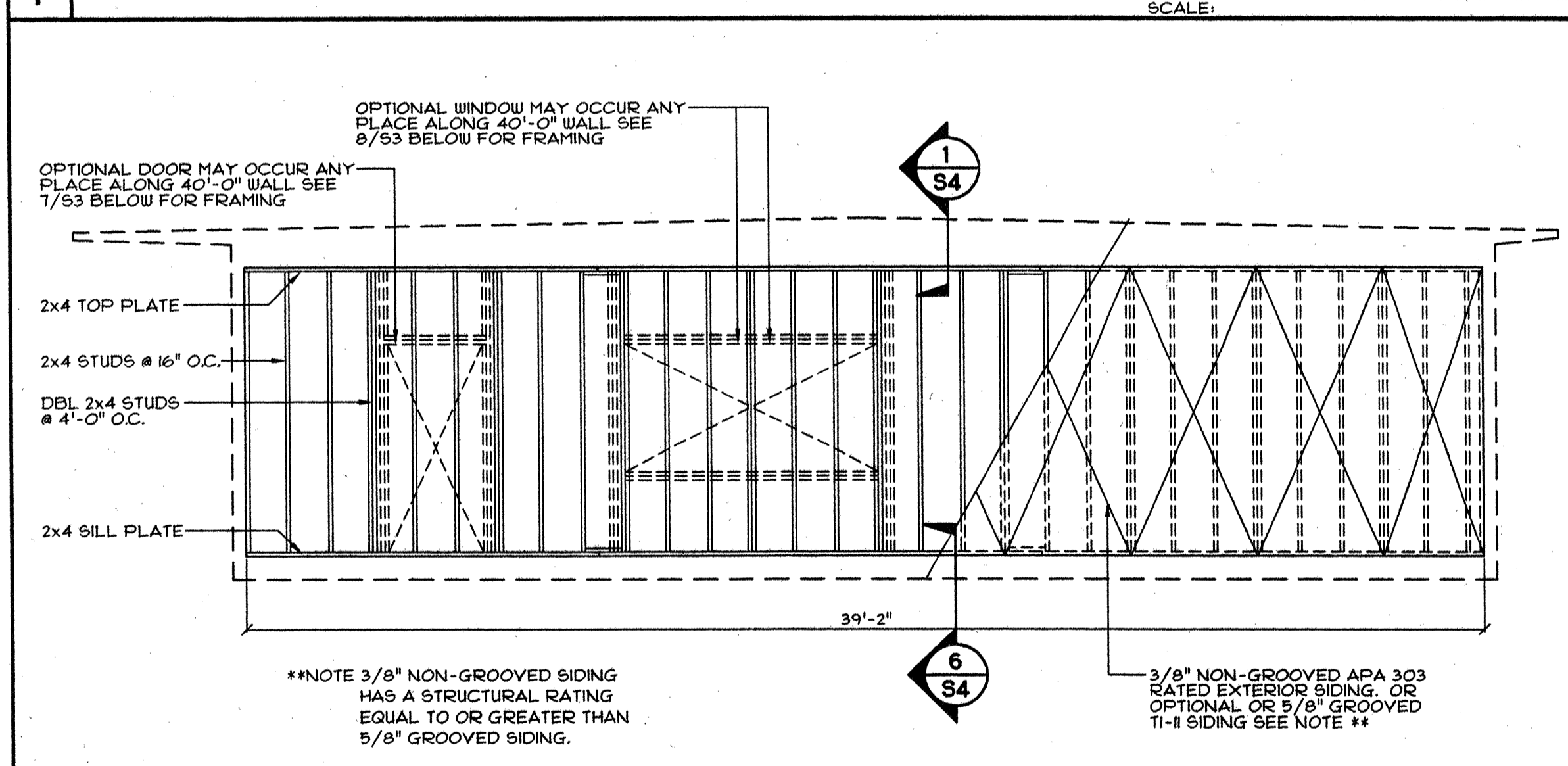
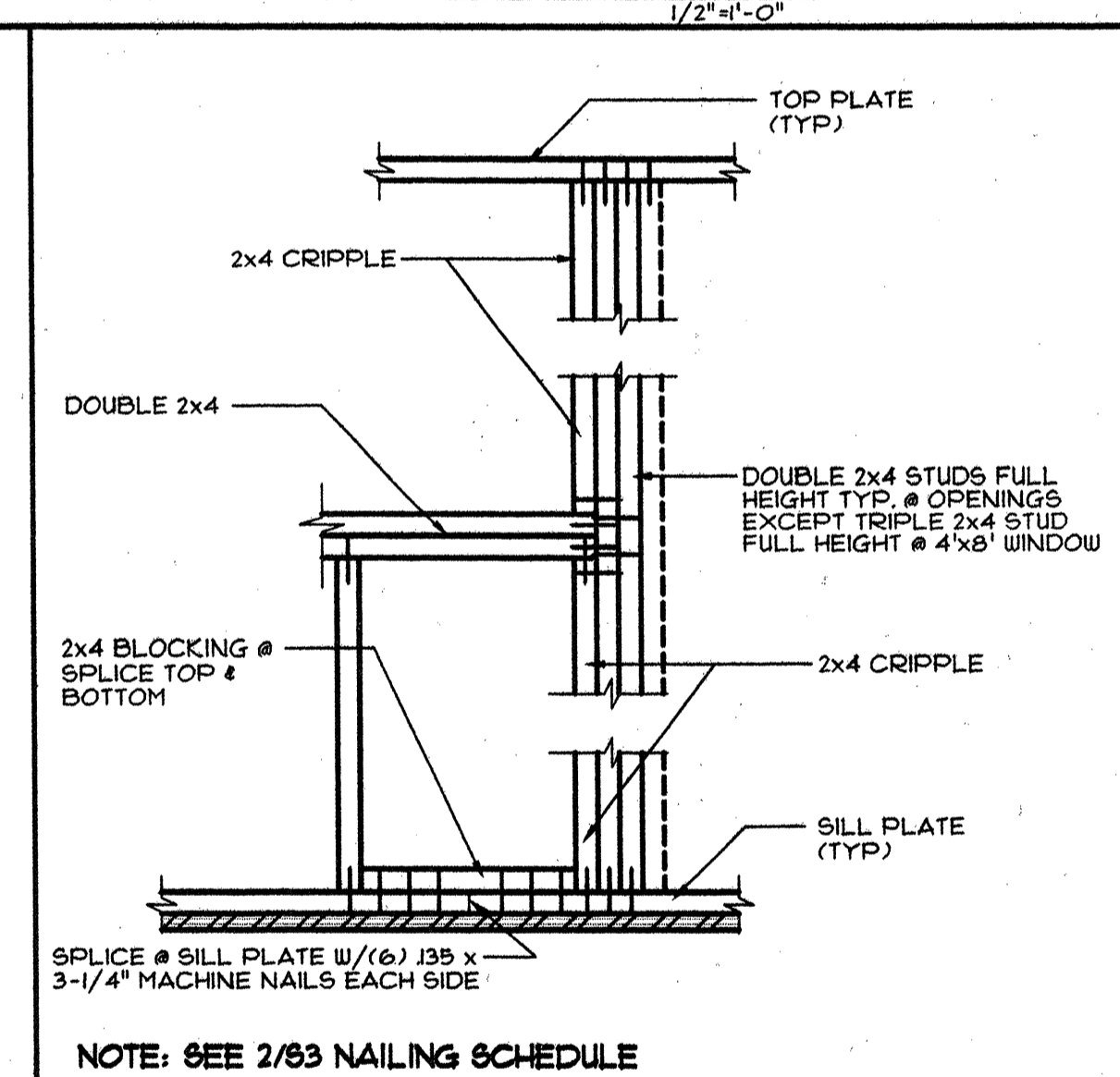


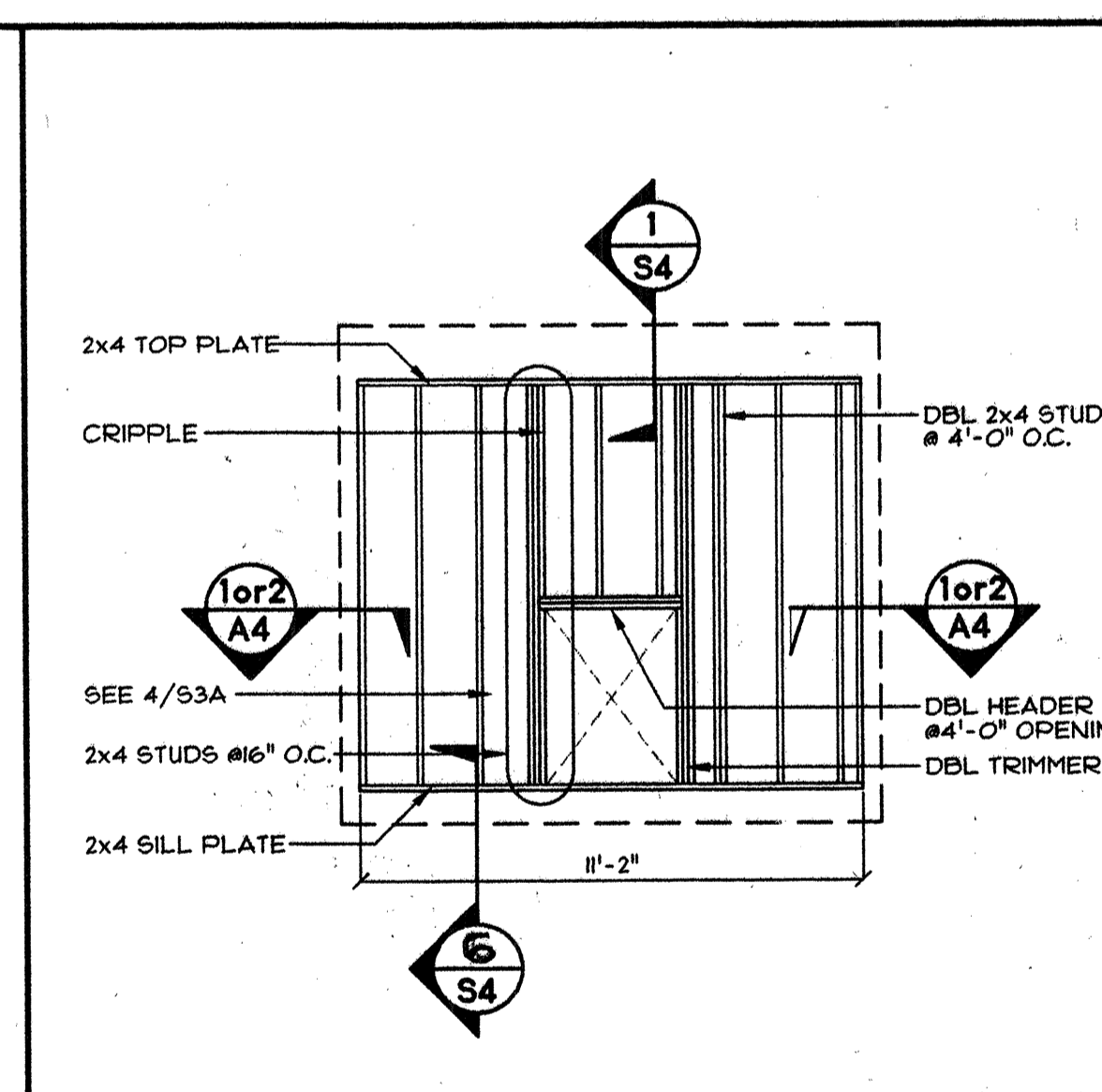
1 LONGITUDINAL TAPERED ROOF BUILDING SECTION
SCALE: 1/2"=1'-0"



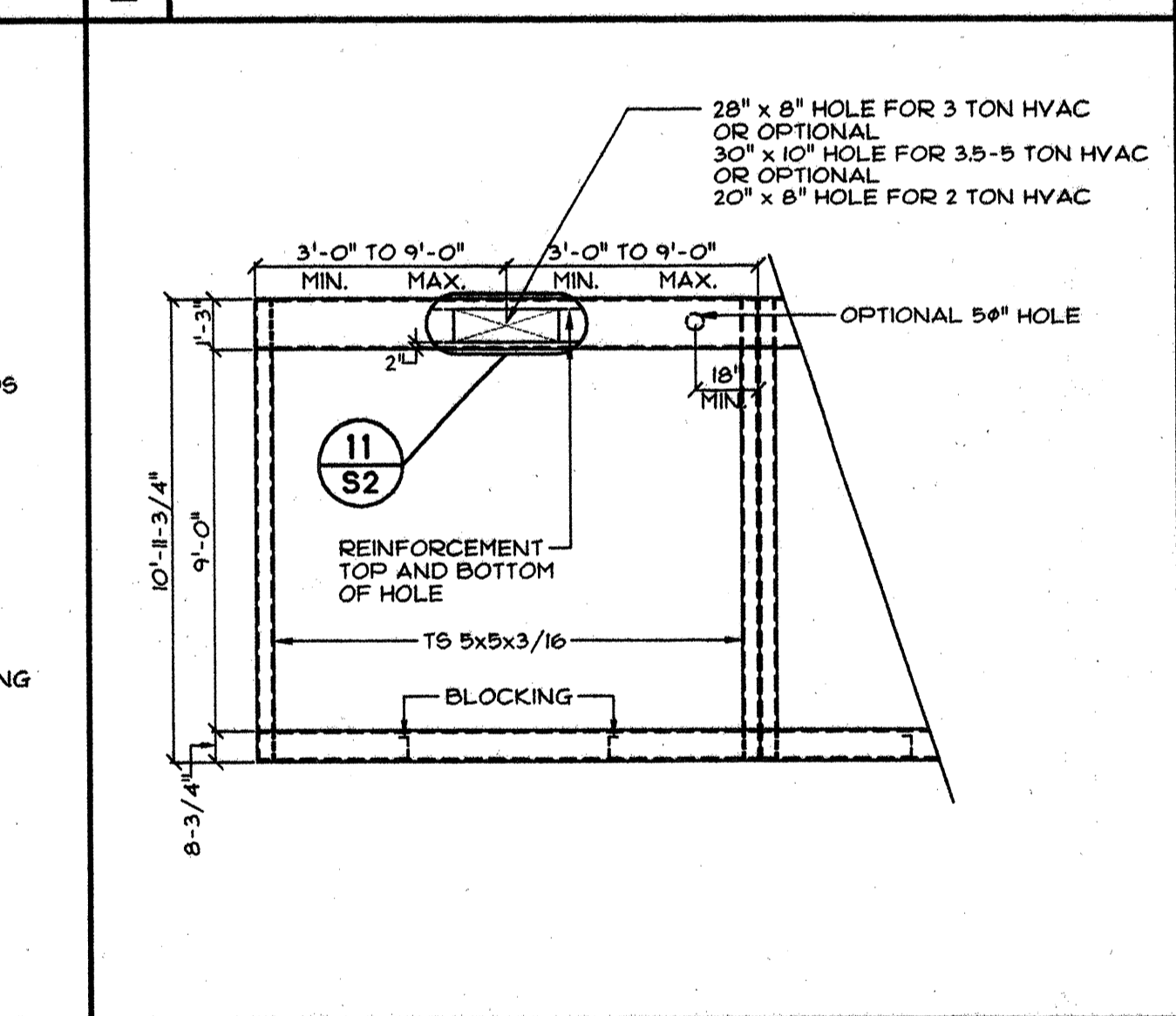
3 WALL FRAMING ELEVATION @ 40'-0" SIDE
SCALE: 1/4"=1'-0"



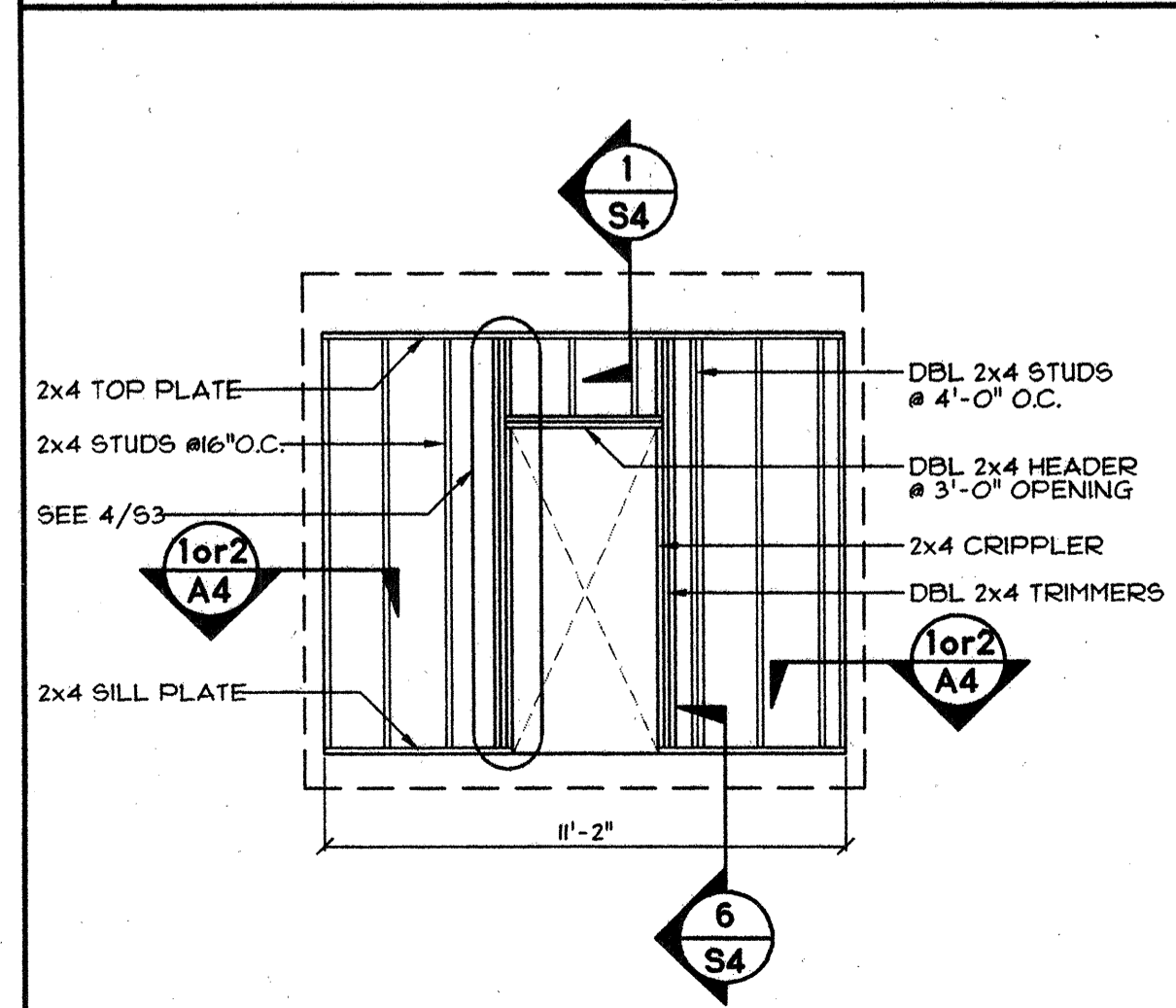
4 NAILING DETAIL
SCALE: 1"=1'-0"



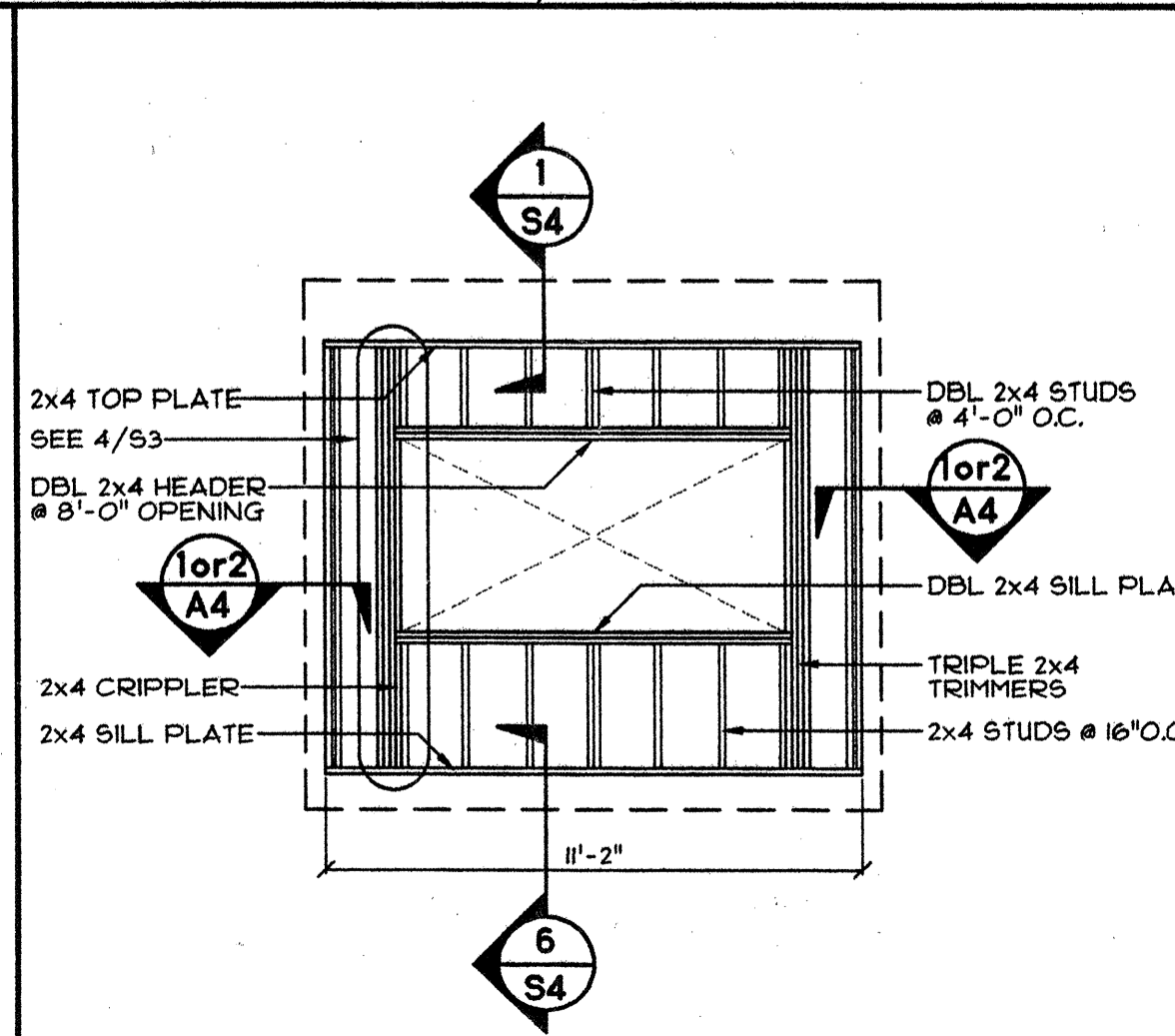
5 INTERIOR HVAC WALL FRAMING
SCALE: 1/4"=1'-0"



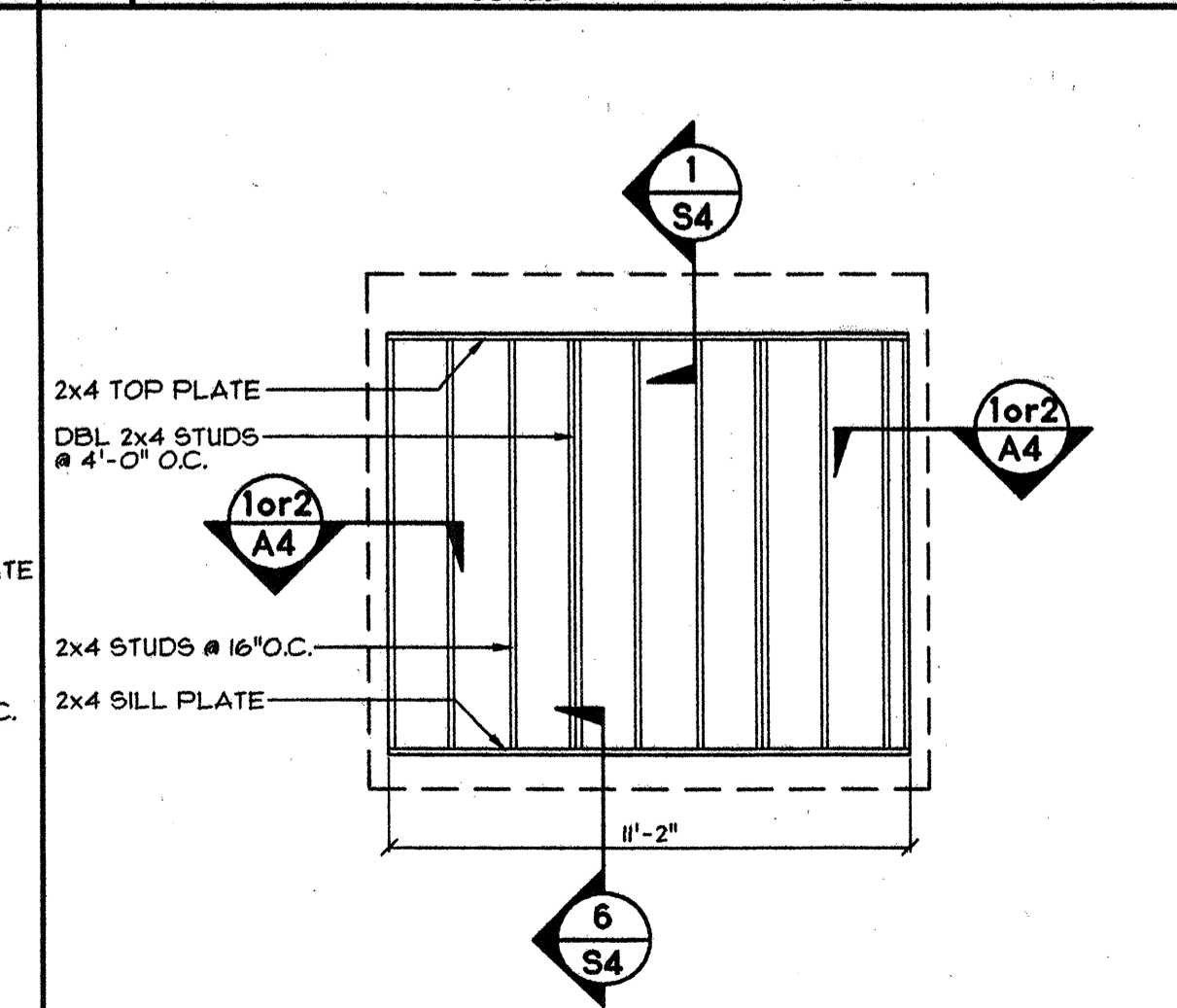
6 END FRAME ELEVATION
SCALE: 1/4"=1'-0"



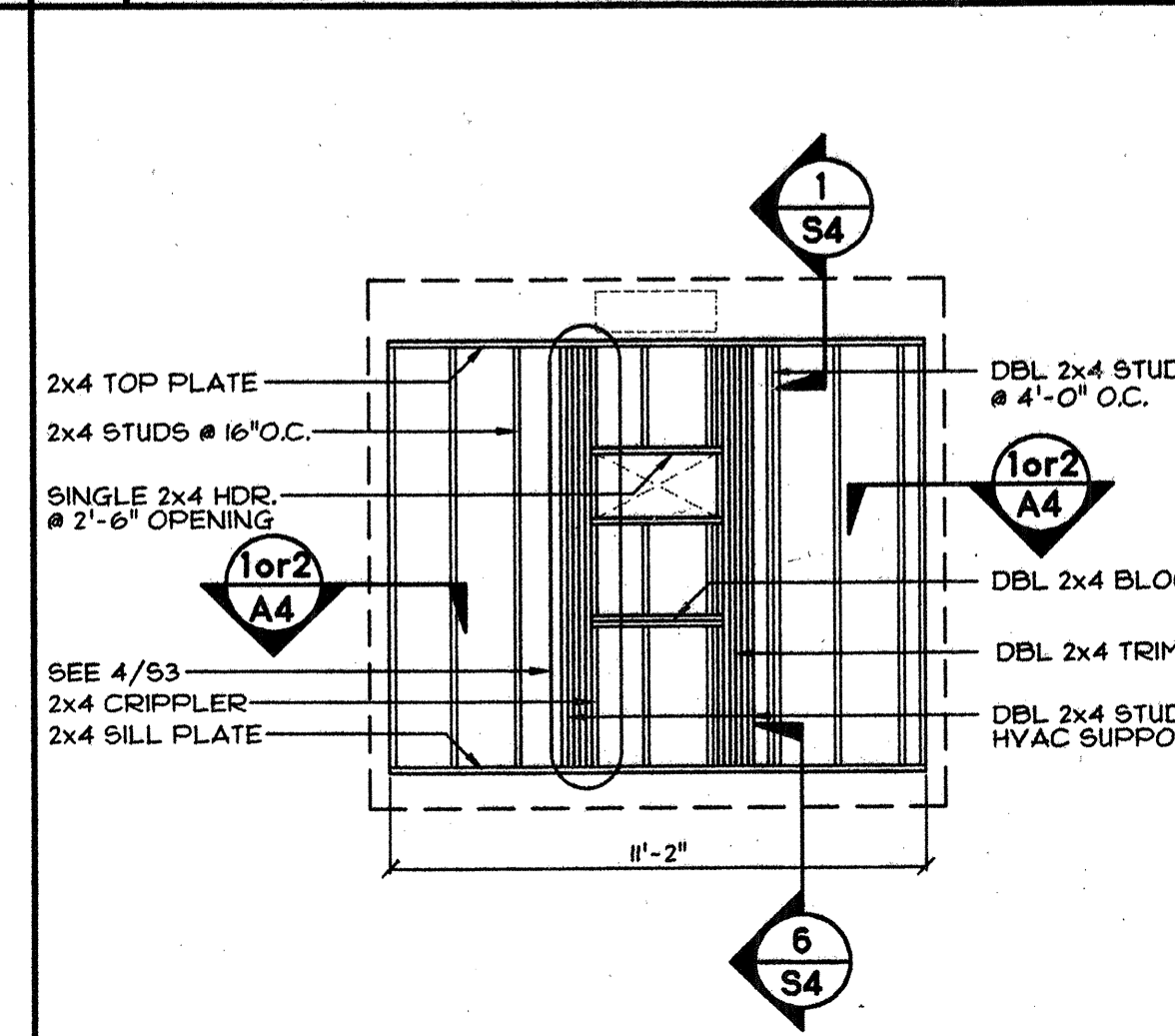
7 DOOR WALL FRAMING
SCALE: 1/4"=1'-0"



8 WINDOW WALL FRAMING
SCALE: 1/4"=1'-0"



9 WALL FRAMING @ 12'-0" WALL
SCALE: 1/4"=1'-0"



10 HVAC WALL FRAMING - DUCTED
SCALE: 1/4"=1'-0"

DIVISION OF THE STATE ARCHITECT

IDENTIFICATION STAMP
DIVISION OF THE STATE ARCHITECT
02-101236
AC: FLS SS: JPB
DATE: 11/17/99

DESIGN CRITERIA

ROOF: DEAD LOAD - 8.0 PSF
ROOF: LIVE LOAD - 20.0 PSF (SNOW)

FLOOR: DEAD LOAD - 8.0 PSF
FLOOR: LIVE LOAD - 50.0 PSF
(OPTIONAL) FLOOR: LIVE LOAD - 70.0 PSF
(OPTIONAL) FLOOR: LIVE LOAD - 125.0 PSF

WALLS: DEAD LOAD - 8.0 PSF
WIND: 80 MPH; EXPOSURE: C
qs=16.4 PSF; Cm=1.06; Cq AS REQ.

SEISMIC: ZONE 4R=1.5D_v=2.8N_s=1.5C_v=0.44N_e=2.0C_u=64N

CONFIDENTIAL MATERIAL - THESE DOCUMENTS ARE THE PROPERTY OF AND ARE NOT TO BE REPRODUCED OR DISTRIBUTED WITHOUT FULL KNOWLEDGE AND WRITTEN CONSENT FROM ENVIROPLEX, INC. © COPYRIGHT 1999 ENVIROPLEX, INC. (ALL DRAWINGS PREPARED BY ENVIROPLEX, INC.)

11 APPROVALS

JH Lawler, Inc.
Structural Engineers
717 16th STREET
WINDSOR, CA
(909) 581-1143 FAX (909) 521-1106

ENVIROPLEX, INC.
4777 E. CARPENTER ROAD STOCKTON, CA 95215

LONGITUDINAL BUILDING SECTION
WALL FRAMING ELEVATIONS - END
FRAME ELEVATION - NAIL SCHEDULE

REVISION DATE: BY:

DATE:

THIS MODULAR BLDG. HAS BEEN ENGINEERED BY A REGISTERED STRUCTURAL ENGINEER AND PREVIOUSLY REVIEWED & APPROVED BY THE DIVISION OF THE STATE ARCHITECT, FIRE & LIFE SAFETY AND ACCESS COMPLIANCE SECTION

S3