

OK - STRUCTURAL SAFETY

STATE STAMP
Department of Geology and Mines
Office of the State Architect

STATE FIRE MARSHAL

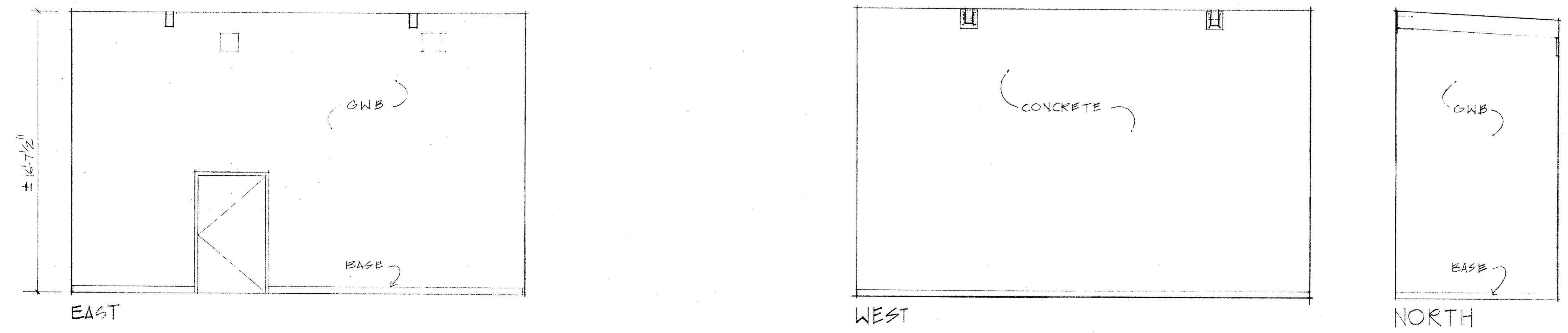
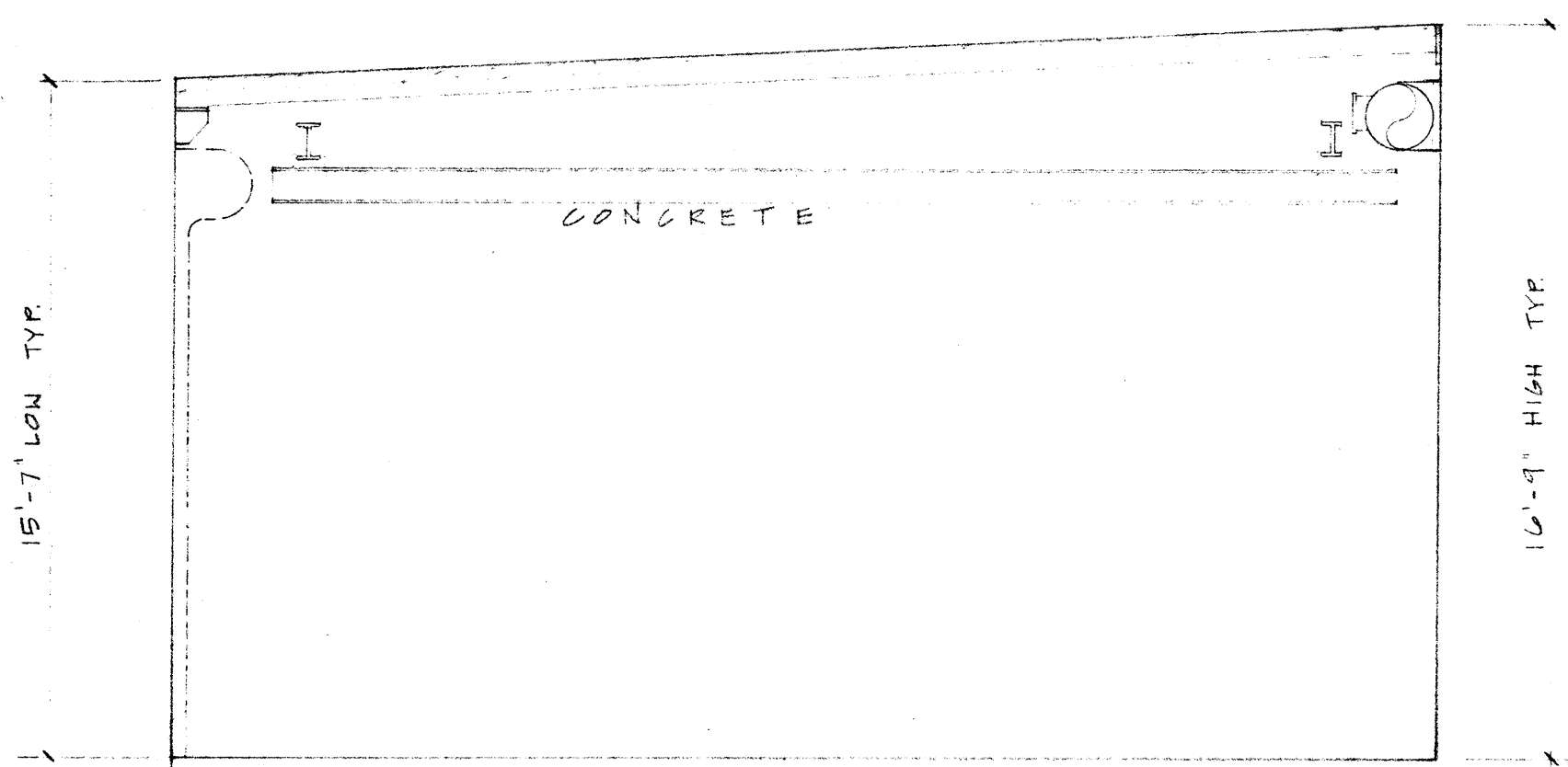
15.11.90

15A - ACCESS COMPLIANCE

53721 (05/14/90)

MOUNTING DETAIL No SCALE 4

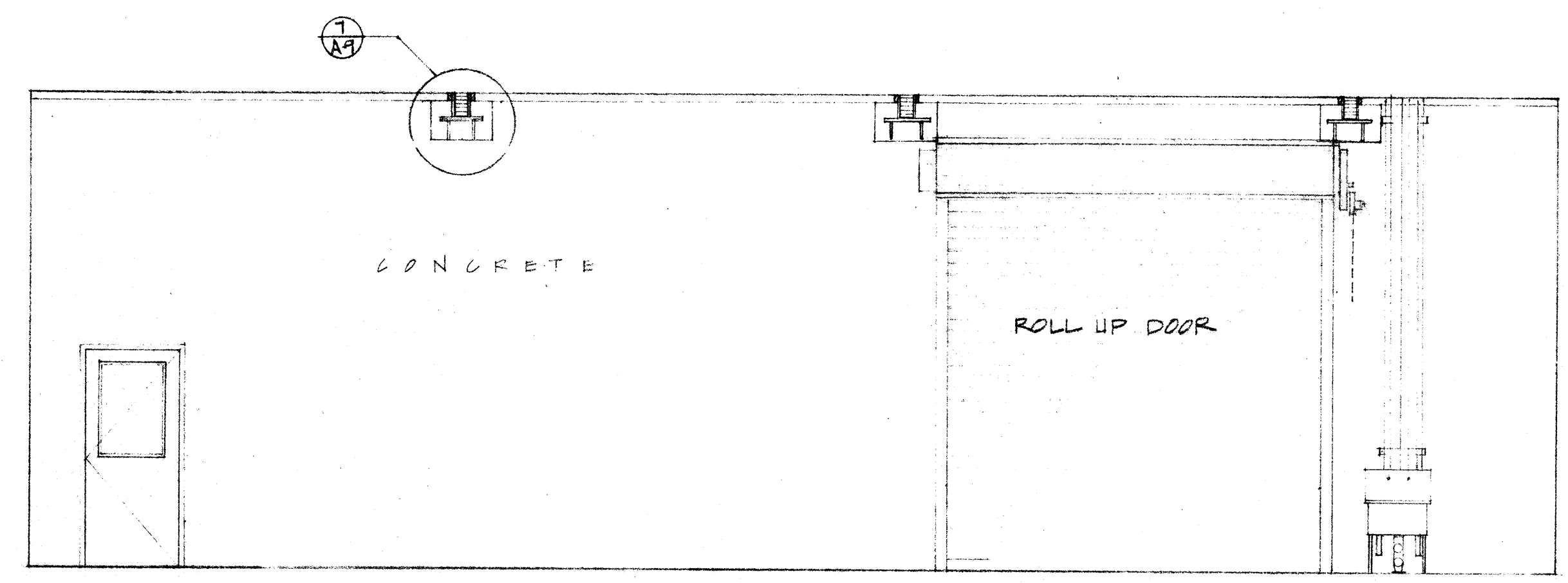
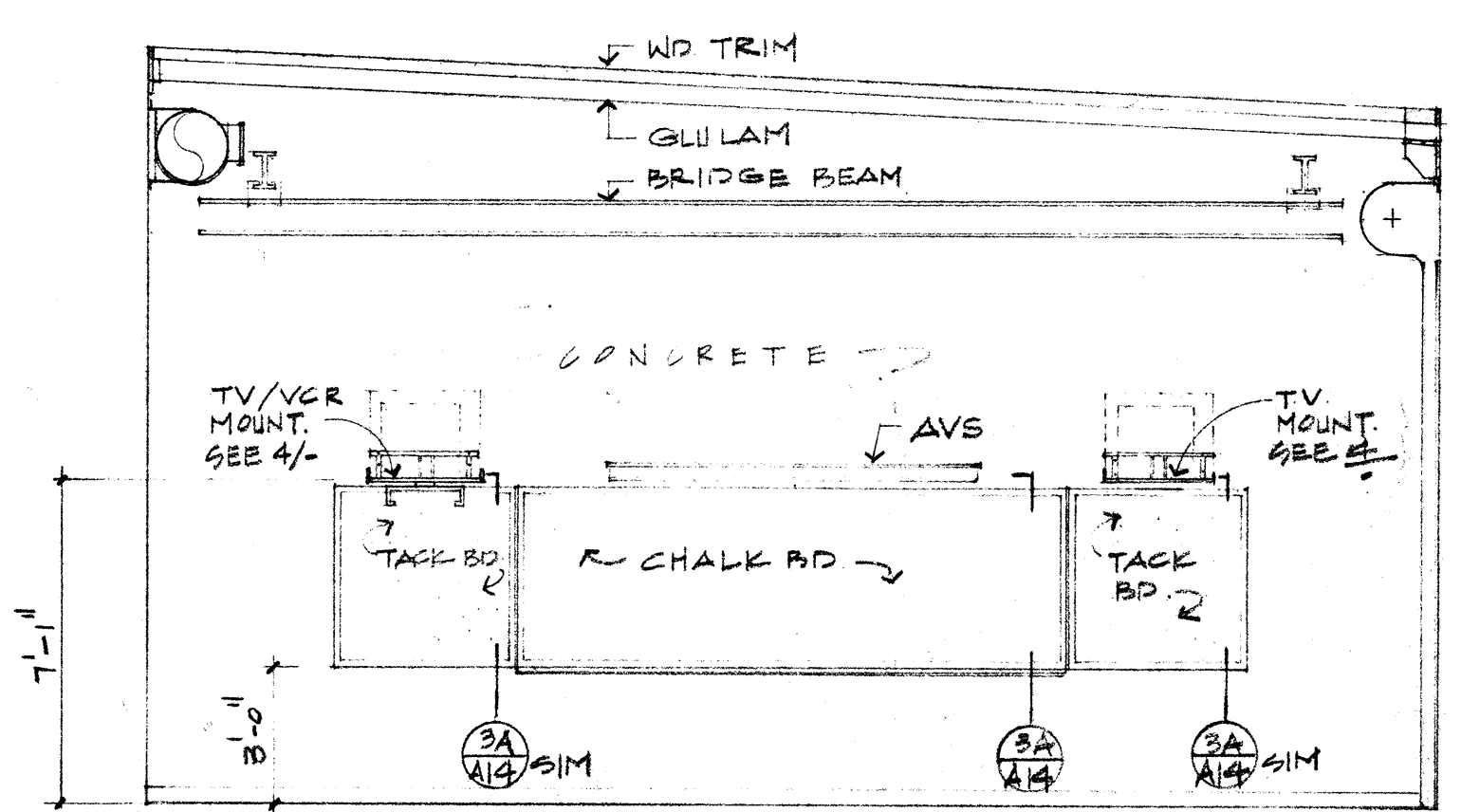
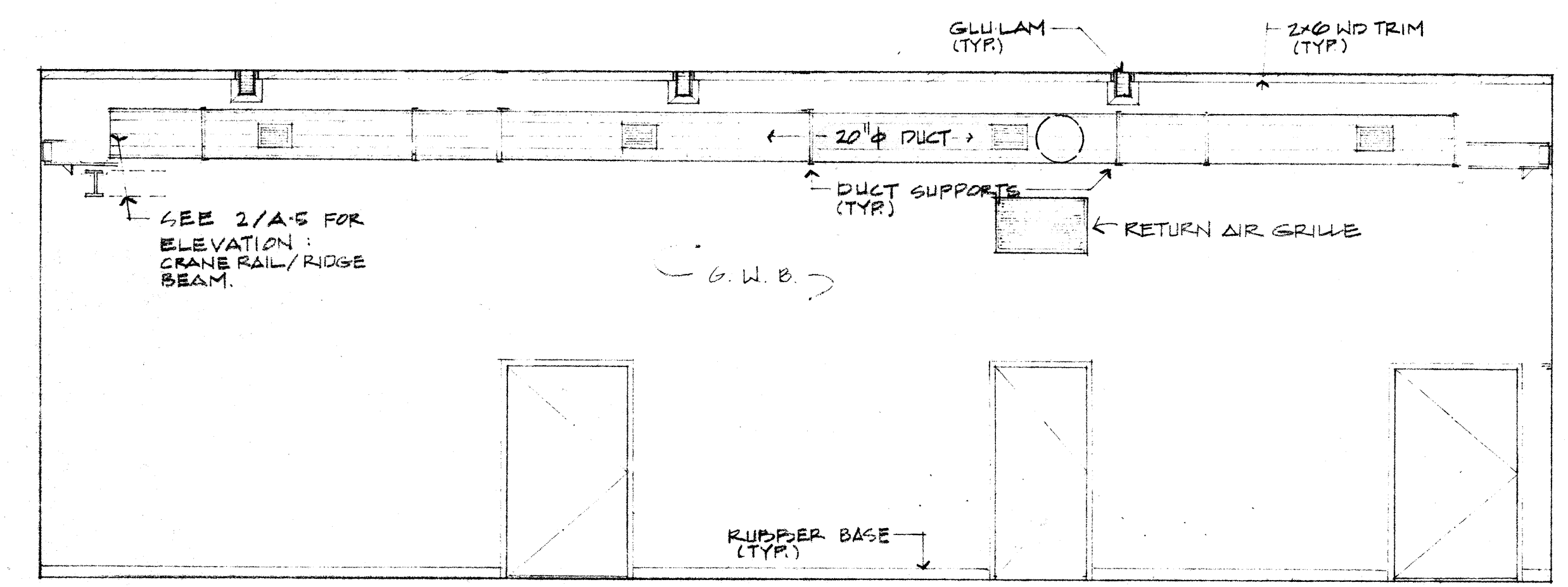
STORAGE ELEVATIONS 3



ENGINE TOOLS

1/4" = 1'-0"

2



WEST

NORTH

EAST

ENGINE VOCATIONAL CLASSROOM ELEVATIONS

1/4" = 1'-0"

1

REV 8 22-90

KELLER AND DASEKING ARCHITECTS

WALTER L. KELLER A.I.A.
WILLIAM H. DASEKING A.I.A.
825 OAK GROVE AVENUE
MENLO PARK, CA 94025-415/325-5966

KD

Walter L. Keller
C-1334

AUTOMOTIVE CLASSROOM BUILDING
TOILET ROOM RENOVATIONS
SKYLINE COLLEGE
SAN MATEO COUNTY COMMUNITY COLLEGE DISTRICT

8906

7.12.90

A 12

13 of 41