

DETAIL OF CLEANOUT FOR LEADER IN PRECAST COLUMN
 SCALE: 1/2"=1'-0"
 PROVIDE FCO'S AS SHOWN ON PLANS

FOR PLUMBING IN ROOM AREAS
 374, 372, 370, 378, 380
 SEE CLAUSE GR 5047-67
 DWG. PA-100.

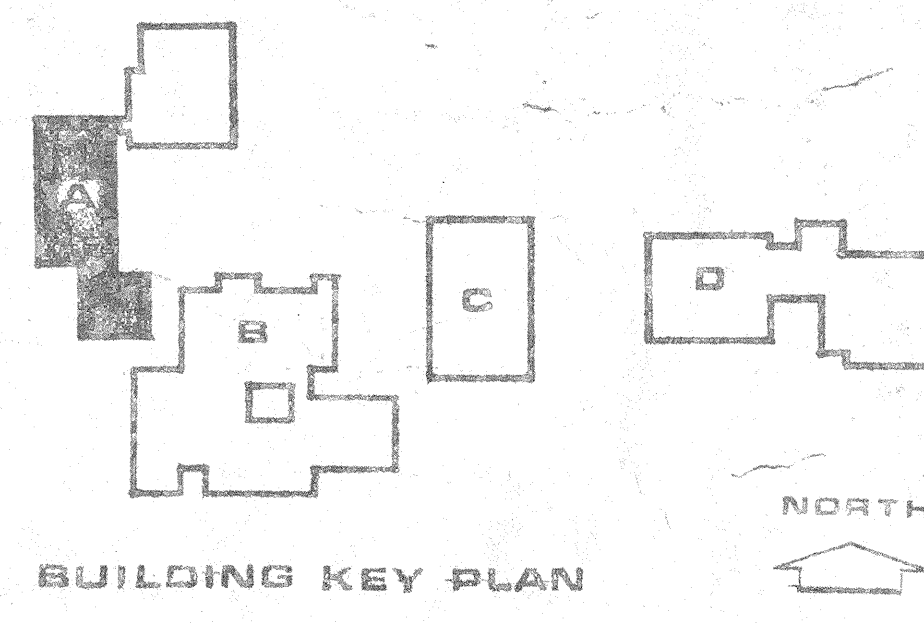
AIR COMPRESSOR (3)
 PRESS. REGULATOR (5)
 94.5 VALVE & PRESS. REG. IN CONC. BOX W/ TOP CONTOUR MARKED 94.5

3" DOMESTIC WATER SERVICE ELEV. 667.0'
 FRESH AIR WELL
 MECH. (475A)
 STAIR 3
 JANITOR (475)
 SPRINKLER BELOW SOUND ATTENUATOR (EACH FLOOR)

6" STORM DRAIN INV. ELEV. 668.5'
 1" AIR TO BLDG 'B'

1ST LEVEL - FLOOR PLAN
 SCALE: 1/8"=1'-0"

2ND LEVEL - FLOOR PLAN
 SCALE: 1/8"=1'-0"



EQUIPMENT SCHEDULE

ITEM	LOCATION	CAPACITY
HOT WATER GENERATOR	BLDG 'A' RM 377	STORAGE TANK: 3'-0" DIA x 6'-0" HEATING COIL: 316 GPH @ 100° F TEMP RISE WITH 200° F IN AND 150° OUT HEATING WATER
CIRCULATING PUMP	BLDG 'A' RM 377	5 GPM @ 10' HEAD 1/2 HP (MIN) MOTOR
WATER PRESSURE REDUCING VALVE	BLDG 'A' RM 377	185 GPM AT 15 PSI PRESSURE DIFFERENTIAL
AIR COMPRESSOR	BLDG 'A' RM 385C	36.7 CFM @ 150 PSIG & 693 RPM 10 HP MOTOR (MIN) TANK SIZE: 120 GAL
GAS REGULATOR	BLDG 'A' RM 377	250 CFH, 1 PSIG/6" W.C.

NOTE
 1. FOR LEGEND, DETAILS, ETC., SEE SHEET P-1
 2. FOR NOTES RELATING TO PLUMBING, SEE SHEET PA-1

AS BUILT DRAWING
 HARRY LEE FLG & HIG
 DATE 11-29-67