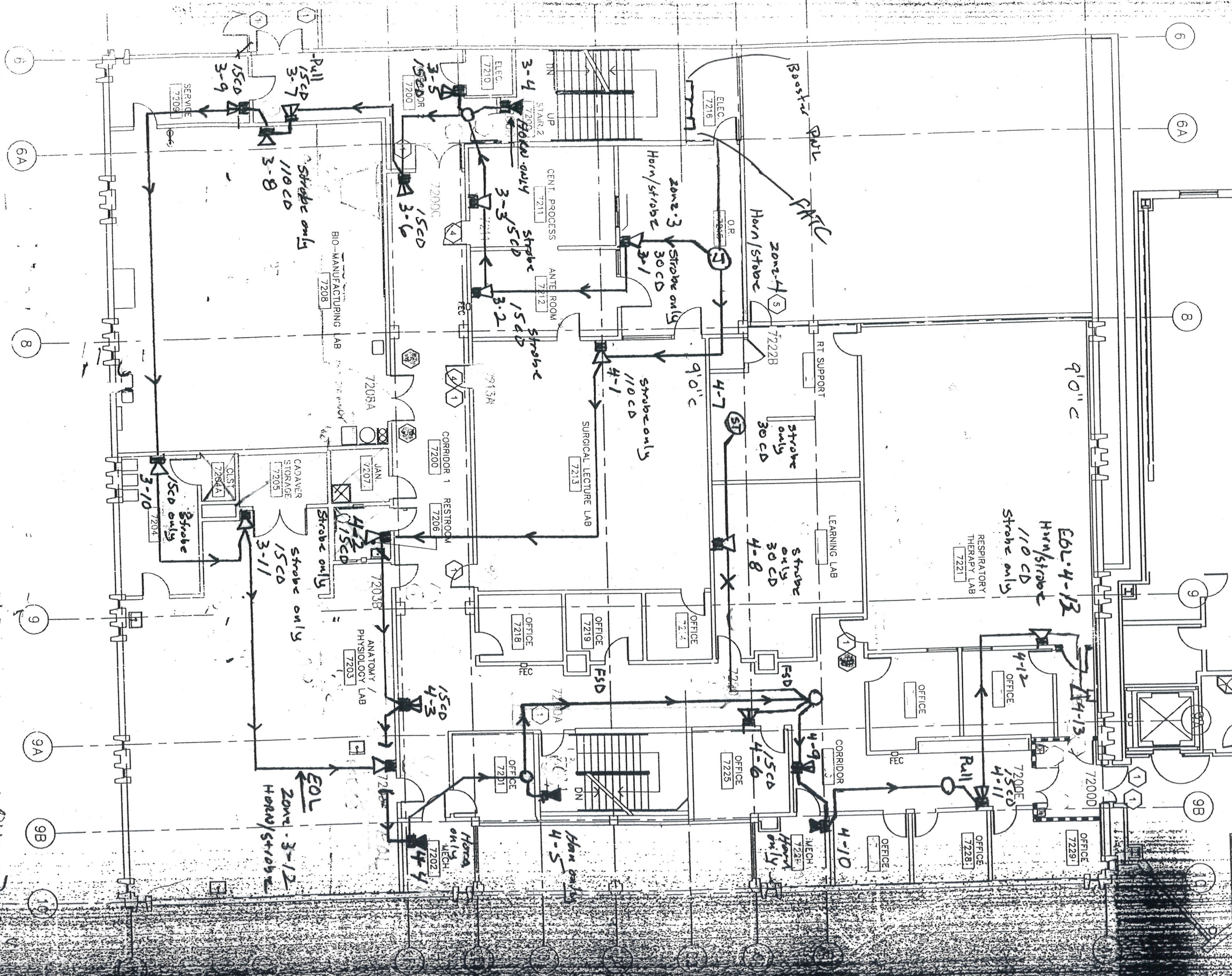


*Handwritten signature*

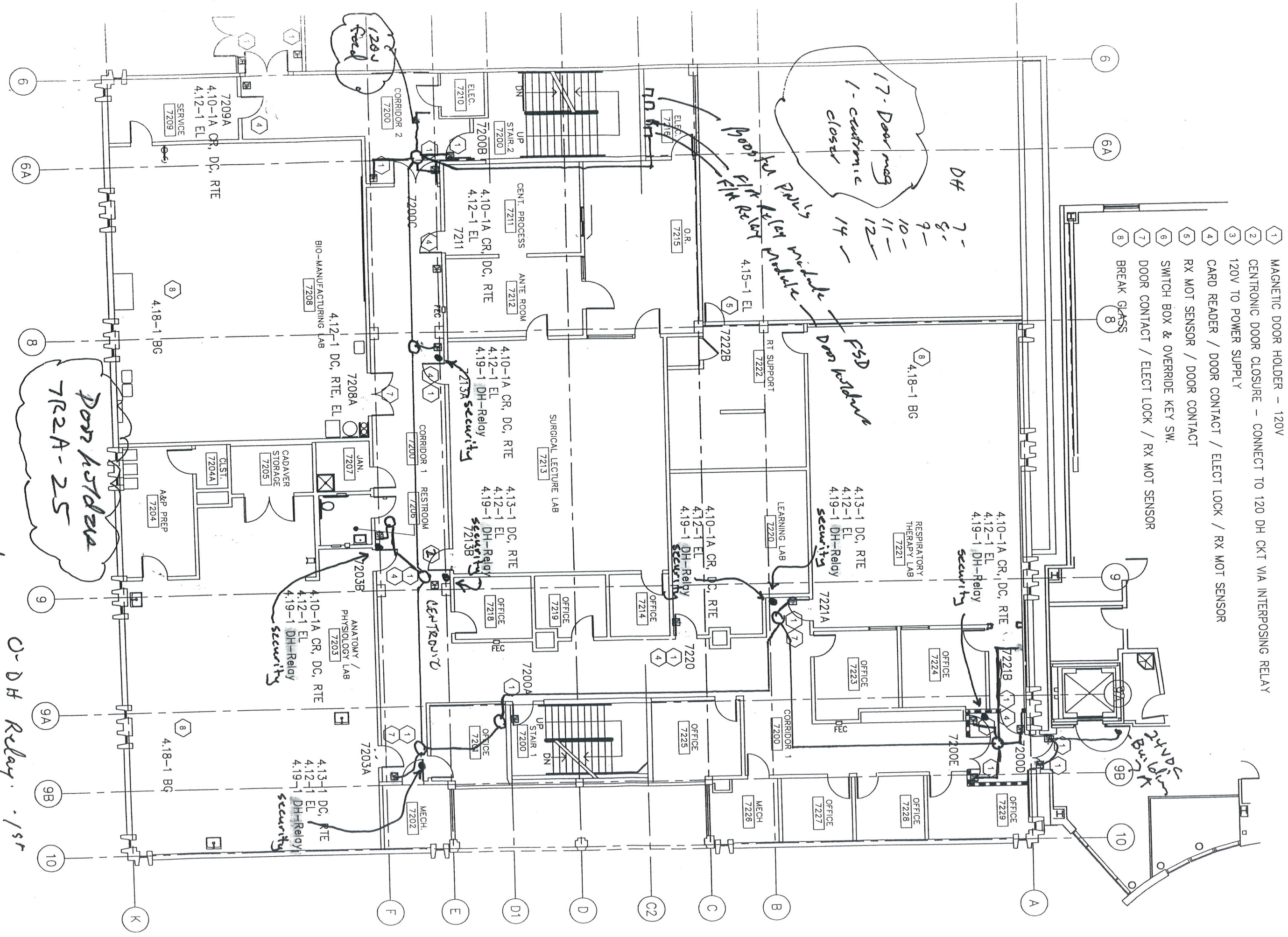
11 smoke  
14 DD  
3 pull

1 SECOND FLOOR REFLECTED CEILING PLAN  
1/8" = 1'-0"

- 1 MAGNETIC DOOR HOLDER - 120V
- 2 CENTRONIC DOOR CLOSURE - CONNECT TO 120 DH CKT VIA INTERPOSING RELAY
- 3 120V TO POWER SUPPLY
- 4 CARD READER / DOOR CONTACT / ELECT LOCK / RX MOT SENSOR
- 5 RX MOT SENSOR / DOOR CONTACT
- 6 SWITCH BOX & OVERRIDE KEY SW.



2nd  
+84 = 70



- 1 MAGNETIC DOOR HOLDER - 120V
- 2 CENTRONIC DOOR CLOSURE - CONNECT TO 120 DH CKT VIA INTERPOSING RELAY
- 3 120V TO POWER SUPPLY
- 4 CARD READER / DOOR CONTACT / ELECT LOCK / RX MOT SENSOR
- 5 RX MOT SENSOR / DOOR CONTACT
- 6 SWITCH BOX & OVERRIDE KEY SW.
- 7 DOOR CONTACT / ELECT LOCK / RX MOT SENSOR
- 8 BREAK GLASS

7-  
 8-  
 9-  
 10-  
 11-  
 12-  
 14-  
 17- Door mag  
 1 - centronic  
 closer

DH  
 7-  
 8-  
 9-  
 10-  
 11-  
 12-  
 14-  
 17- Door mag  
 1 - centronic  
 closer

FSD  
 Door holdup

1 SECOND FLOOR FIRE ALARM PLAN  
1/8" = 1'-0"

O-DH Relay - 1st  
 7-DH Relays - 2nd  
 4-DH Relays - 3rd  
 11

Door holdup  
 7R2A-25

Security  
 4.10-1A CR, DC, RTE  
 4.12-1 EL  
 4.19-1 DH-Relay

Security  
 4.13-1 DC, RTE  
 4.12-1 EL  
 4.19-1 DH-Relay

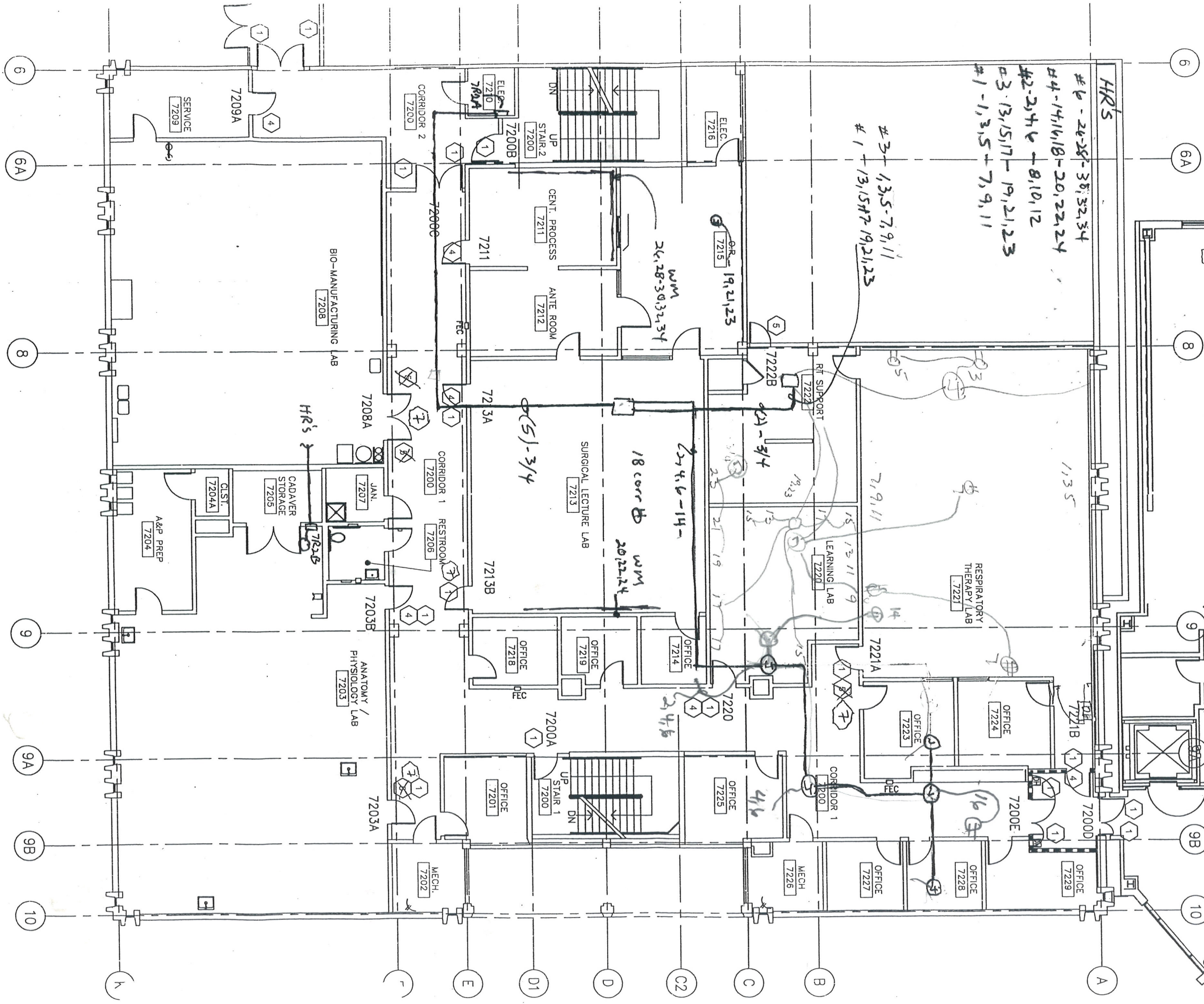
Security  
 4.10-1A CR, DC, RTE  
 4.12-1 EL  
 4.19-1 DH-Relay

Security  
 4.13-1 DC, RTE  
 4.12-1 EL  
 4.19-1 DH-Relay

Security  
 4.10-1A CR, DC, RTE  
 4.12-1 EL  
 4.19-1 DH-Relay

Security  
 4.13-1 DC, RTE  
 4.12-1 EL  
 4.19-1 DH-Relay

- ① MAGNETIC DOOR HOLDER - 120V
- ② CENTRONIC DOOR CLOSURE - CONNECT TO 120 DH CKT VIA INTERPOSING RELAY
- ③ 120V TO POWER SUPPLY
- ④ CARD READER / DOOR CONTACT / ELECT LOCK / RX MOT SENSOR
- ⑤ ~~RX MOT SENSOR~~ / DOOR CONTACT
- ⑥ SWITCH BOX & OVERRIDE KEY SW.
- ⑦ DC/EL/RT



HR'S  
 # 1 - 26, 28 - 30, 32, 34  
 # 4 - 14, 16, 18 - 20, 22, 24  
 # 2 - 2, 4, 6 - 8, 10, 12  
 # 3 - 13, 15, 17 - 19, 21, 23  
 # 1 - 1, 3, 5 - 7, 9, 11

# 3 - 1, 3, 5 - 7, 9, 11  
 # 1 - 13, 15, 17 - 19, 21, 23

WMM  
 26, 28 - 30, 32, 34

18 CORR B  
 WMM  
 20, 22 - 24

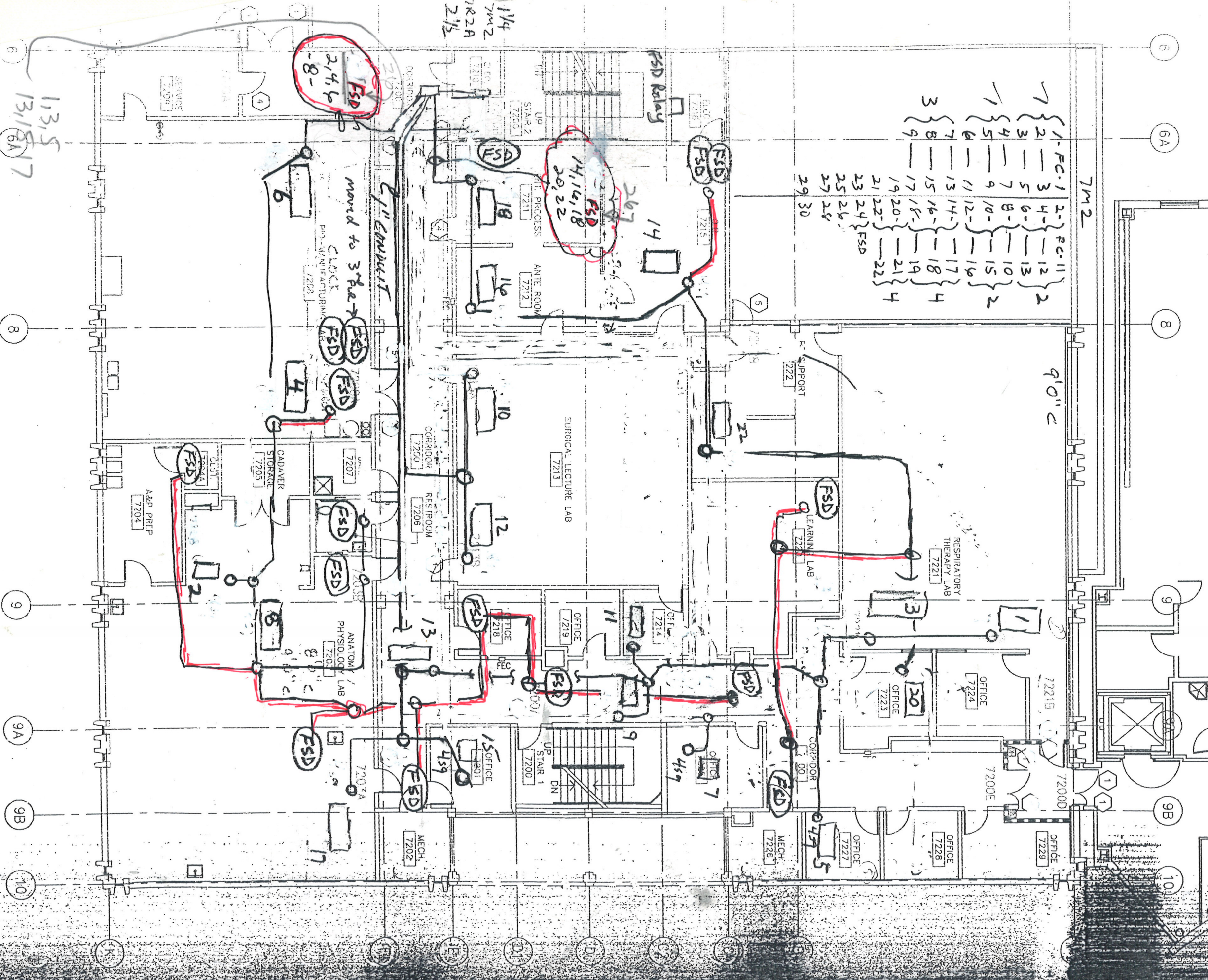
51-3/4

1 SECOND FLOOR FIRE ALARM PLAN  
 1/8" = 1'-0"

Door holders & 25 BKR

- 1 MAGNETIC DOOR HOLDER - 120V
- 2 CENTRIC DOOR CLOSURE - CONNECT TO 120 DH CKT VIA INTERPOSING RELAY
- 3 120V TO POWER SUPPLY
- 4 CARD READER / DOOR CONTACT / ELECT LOCK / RX MOT SENSOR
- 5 RX MOT SENSOR / DOOR CONTACT
- 6 SWITCH BOX & OVERRIDE KEY SW.

7M2	FC-I	FC-II
1	1	12
2	2	13
3	3	10
4	4	15
5	5	16
6	6	17
7	7	18
8	8	19
9	9	21
10	10	22
11	11	4
12	12	
13	13	
14	14	
15	15	
16	16	
17	17	
18	18	
19	19	
20	20	
21	21	
22	22	
23	23	
24	24	
25	25	
26	26	
27	27	
28	28	
29	29	
30	30	



16 FSD - FSD-PNL 7M2-~~19~~ 20  
 20 dx. FCV

204 = 710  
 2nd