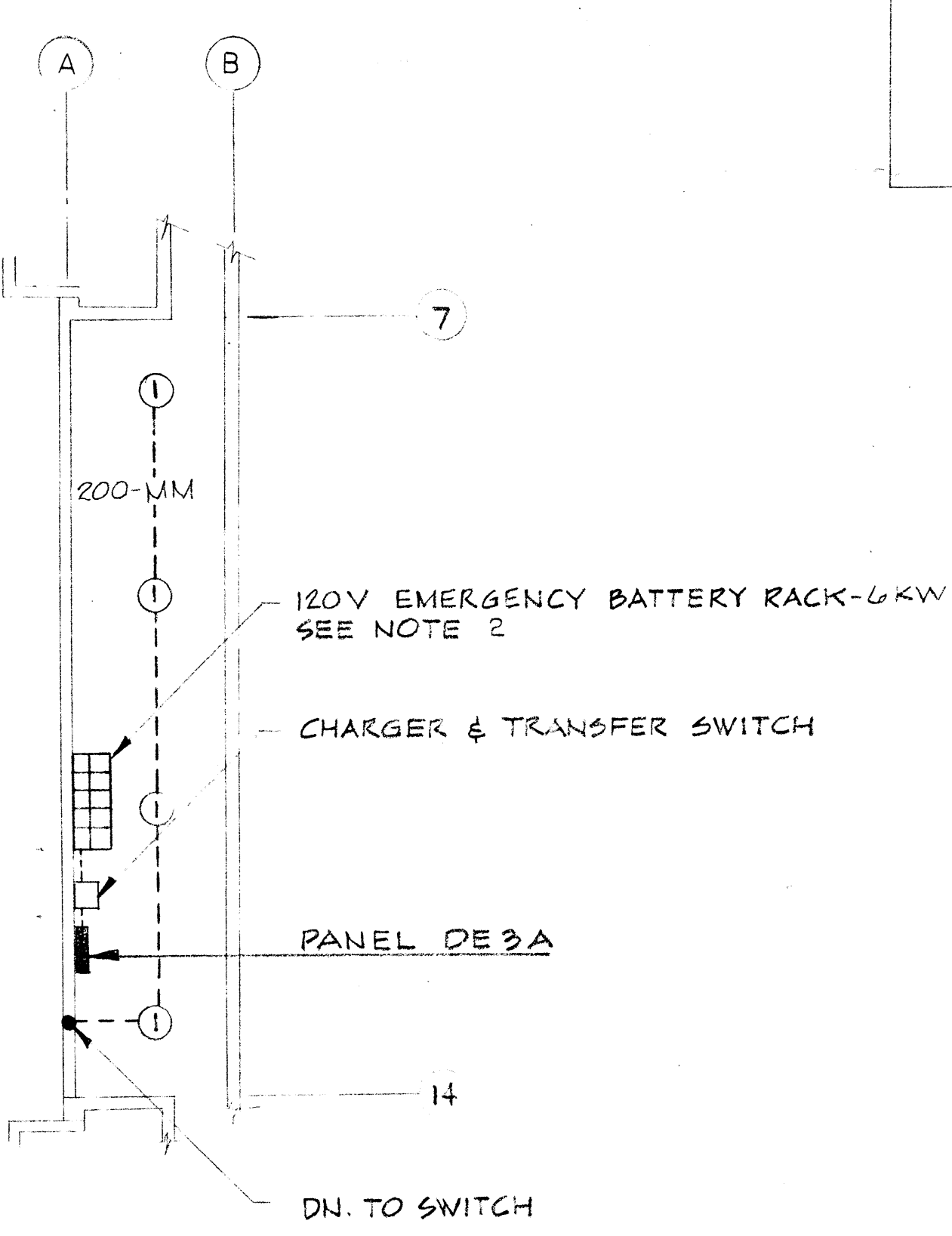


LIGHTING
2ND LEVEL FLOOR PLAN
SCALE 1/8" = 1'-0"

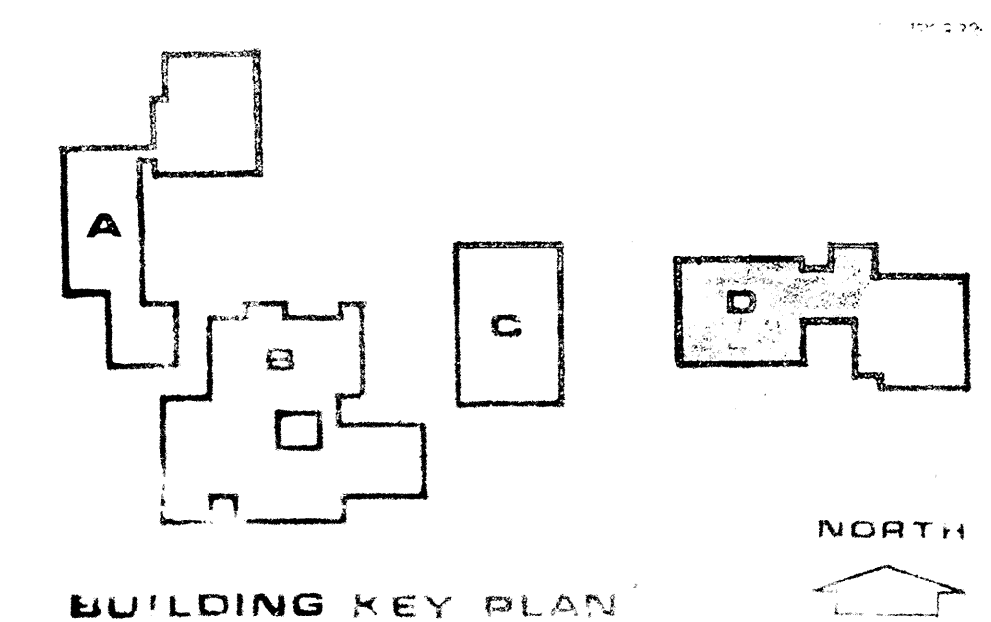


MECH. ROOM ABOVE STAIR #1
SCALE 1/8" = 1'-0"

NOTES:

- SEE NOTES 1 TO 3 ON SHEET E-D1
- SECURE BATTERY RACK TO FLOOR
- IN LOBBY #168-2 FIXTURES B SHOWN WITH EMERGENCY CIRCUIT, SHALL BE PROVIDED WITH AUXILIARY 120 VOLT SOCKET AND 100 WATT LAMP ON EMERGENCY

| SCHEDULE OF LIGHTING FIXTURES | |
|-------------------------------------|----------|
| LOCATION | TYPE |
| GYMNASIUM-ALL FLUORESCENT | 4/40-K |
| GYMNASIUM-ALL INCANDESCENT | 300-FF1 |
| GYMNASIUM-INCANDESCENT ON EMERGENCY | 190-FF1 |
| STAIRS | 2/40-A1 |
| EXITS | 2/23-QQ3 |
| ALL OTHERS EXCEPT NOTED ON PLANS | 4/40-A |



JOHN CARL WARNECKE F.A.I.A.
JOHN CARL WARNECKE AND ASSOCIATES
ARCHITECTS AND PLANNING CONSULTANTS
61 NEW MONTGOMERY STREET SAN FRANCISCO

GRADUATE THOMPSON ENGINEERS
MECH. & ELEC. ENGINEERS
CARL E. KIRKER
CIVIL ENGINEER

BUILDING D PHYSICAL EDUCATION
ELECTRICAL - 2ND LEVEL PLAN - LIGHTING
COLLEGE OF SAN MATEO
SAN BRUNO CALIFORNIA

| SCALE AS SHOWN | JOB NO. | D.B. | CHECK BY | DATE | REVISION DESCRIPTION | NO. | DATE APPROVED |
|----------------|---------|------|----------|------|----------------------|-----|---------------|
| 64-1-B | AW/CA | FE/G | 12/27/67 | | | | |

SHEET NUMBER
E-D3
OF 5 SHEETS
REVISION NO.