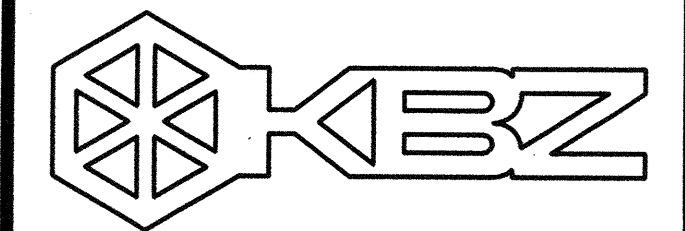


**KEYNOTES**

- 1 (E) CABLE TRAX AT STRUCTURE.
- 2 AFTER (E) DUCTS HAVE BEEN REMOVED AND CAPPED PER PLANS, RESHEAVE (E) RETURN FAN TO REDUCE AIR QUANTITY TO 9650 CFM. IF FAN IS UNSTABLE AT THIS CFM, REPLACE FAN.
- 3 AFTER (E) DUCTS HAVE BEEN REMOVED AND CAPPED PER PLANS, RESHEAVE (E) SUPPLY FAN TO REDUCE AIR QUANTITY TO 8980 CFM. IF FAN IS UNSTABLE AT THIS CFM, REPLACE FAN. REPLACE (E) FILTER.



**KRUGER BENSEN ZIEMER ARCHITECTS, INC.**  
 30 W. ARRELLAGA SANTA BARBARA, CA 93101  
 805/963.1726 93101

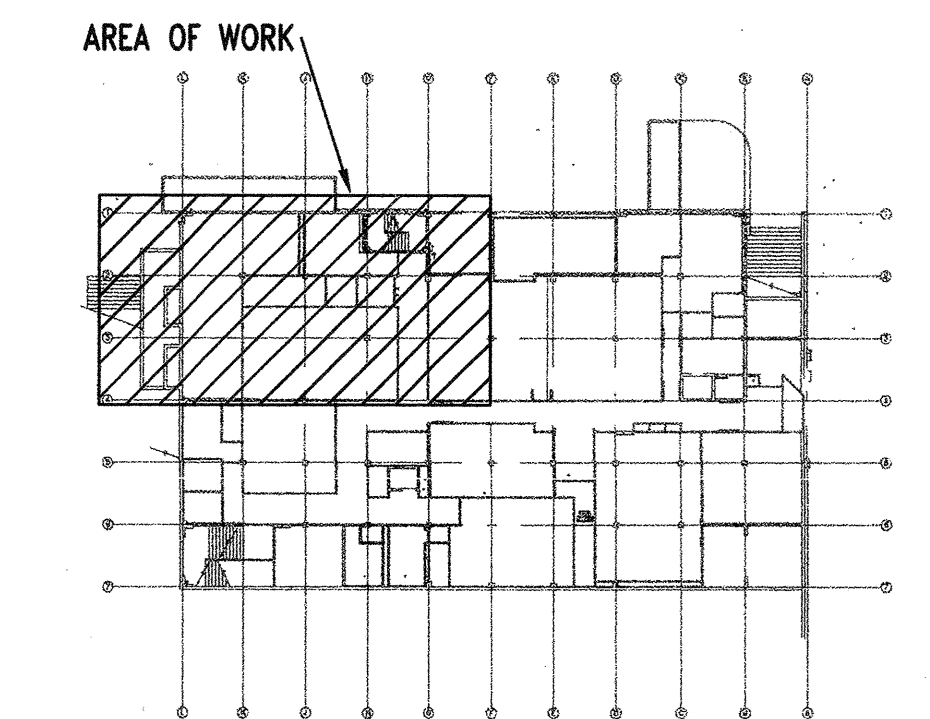
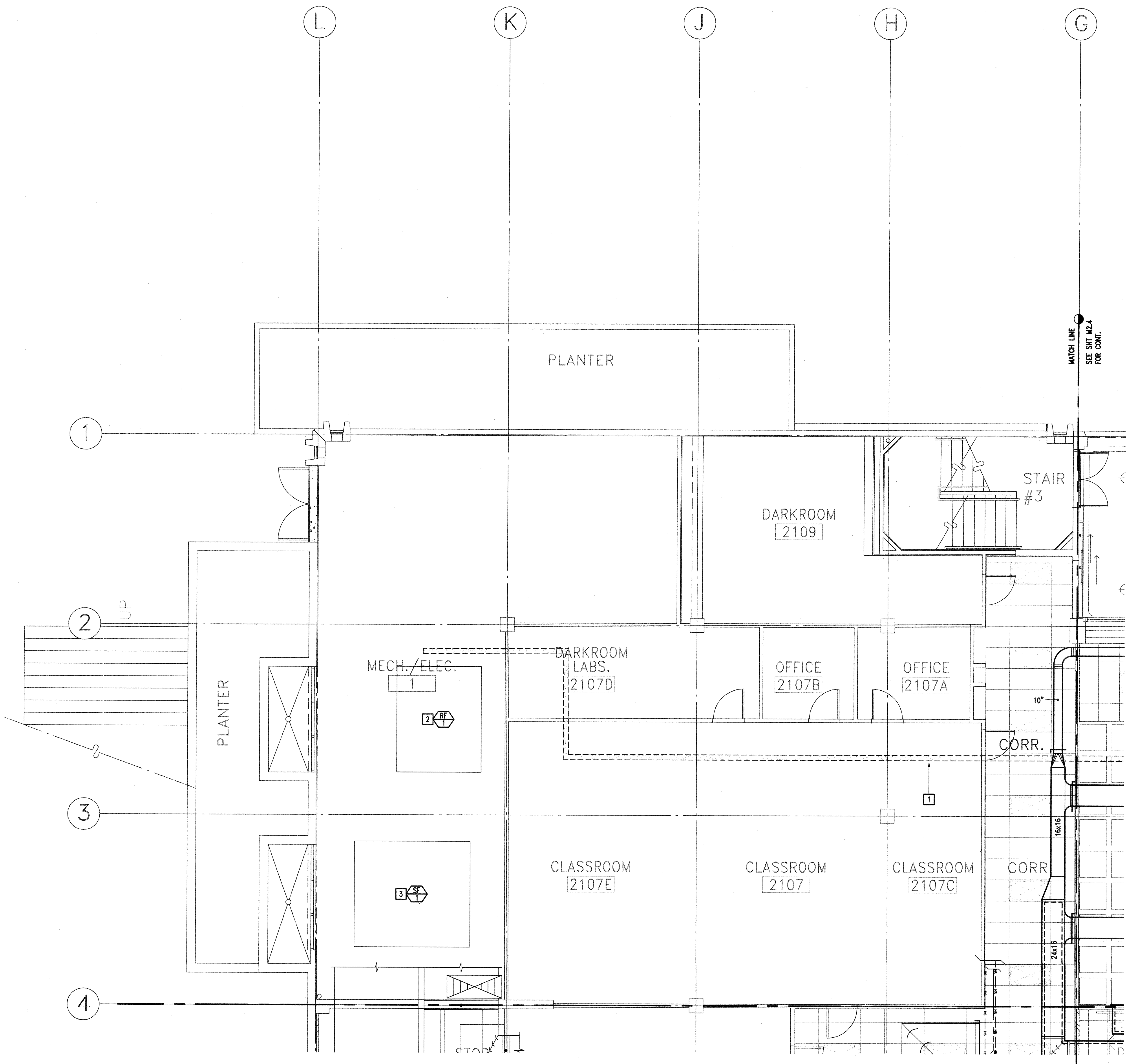
**STEVE DOWTY, A.I.A.**  
 PRINCIPAL IN CHARGE

**GERALD SHUSTA**  
 PROJECT ARCHITECT

All sizes, design arrangements and plans indicated or represented by this drawing are shown to be on the property of Kruger-Bensen-Ziemer. All conditions, use, reuse, credit, model and development for use in, and in connection with, the specified project. None of such items, design, arrangements or plans shall be used or disclosed to any person, firm or corporation for any purpose whatsoever without the written permission of Kruger-Bensen-Ziemer.

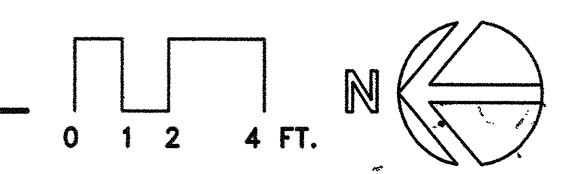
**MEC**  
 KR0014  
 MECHANICAL ENGINEERING CONSULTANTS  
 881 W. Michelson Ave. Suite A  
 Santa Barbara, Ca 93101  
 Tel (805) 957-4632

**CENTER FOR ADVANCED LEARNING TECHNOLOGY  
 SKYLINE COLLEGE**  
 SAN MATEO COUNTY COMMUNITY COLLEGE DISTRICT  
 SAN BRUNO, CALIFORNIA 94066  
 3300 COLLEGE DRIVE

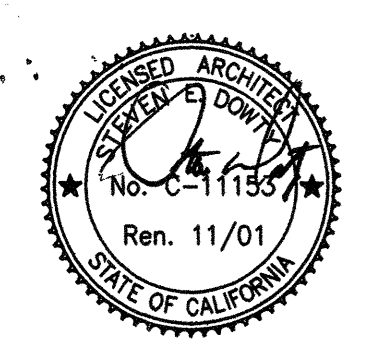


**KEYPLAN**  
 SCALE : NTS

**PARTIAL MECHANICAL FLOOR PLAN - NORTHEAST**  
 SCALE : 1/4"=1'-0"



MATCH LINE  
 SEE SHT N2.6 FOR CONT.



IDENTIFICATION STAMP  
 DIV. OF THE STATE ARCHITECT  
 OFFICE OF REGULATION SERVICES  
 APPL 01-103735  
 Ren. 11/01  
 DATE 08/27/01

NO.	DESCRIPTION	DATE	BY
REVISION			

DRAWN	J. SIERRA, E. MARKHAM
CHECKED	AVR
DATE	03-21-2001
JOB NO.	98-03
SHEET TITLE	
PARTIAL MECHANICAL FLOOR PLAN - NORTHEAST	
SHEET 06	RECEIVED
OF 50	M 2.5 OCT 2 2001
	MEC

E:\KB-KrugerBensenZiemer\K0014-Skyline\K0014-M2\_5.dwg, 06/20/2001, 05:30:15 PM, Eddie, Eshew,pc3, Arch, E1, -30.4 x 42. in., 1:1