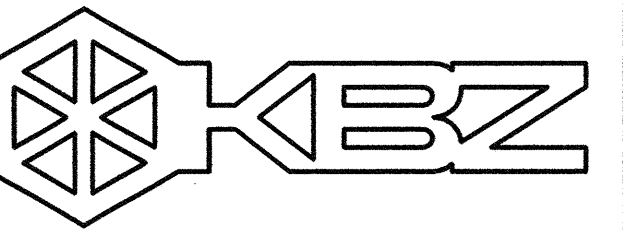


KEYNOTES

- 1 CLEAN, POWDERCOAT, AND REATTACH (E) 46x6 RETURN AIR REGISTER, 900 CFM.
- 2 CLEAN, POWDERCOAT, AND REATTACH (E) 46x6 SUPPLY AIR REGISTER, 925 CFM.
- 3 (E) CABLE TRAY AT STRUCTURE.
- 4 RELOCATED TSTAT.
- 5 SEE SHT M2.7 FOR WORK THIS AREA.
- 6 USE INTERNALLY MOUNTED ACTUATOR.



KRUGER BENSEN ZIEMER ARCHITECTS, INC. AIA
30 W. APPELLAGA SANTA BARBARA, CA 93101
805/963-1726

STEVE DOWTY, A.I.A.
PRINCIPAL IN CHARGE

GERALD SHUSTA
PROJECT ARCHITECT

All items, except arrangements and items indicated or represented by this drawing are owned by and are the property of Kruger-Bensen-Ziemer, AIA, architects, and are created, designed and developed for and used in connection with the specific project. None of such items, designs, arrangements or plans shall be used by or disclosed to any person, firm or corporation for any purpose whatsoever without the written permission of Kruger-Bensen-Ziemer.

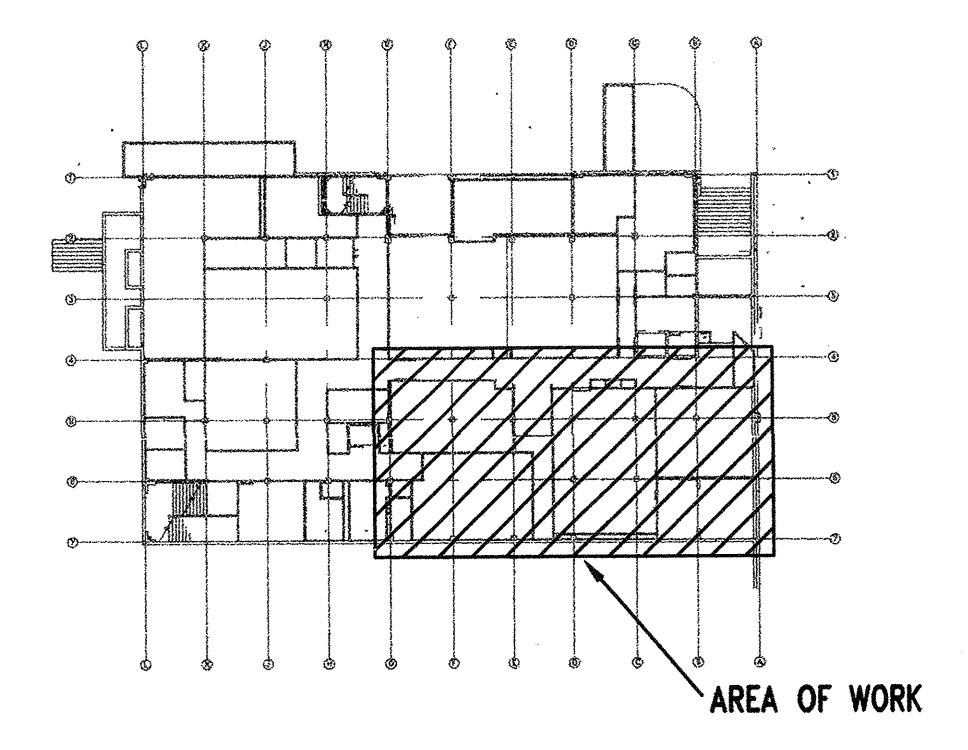
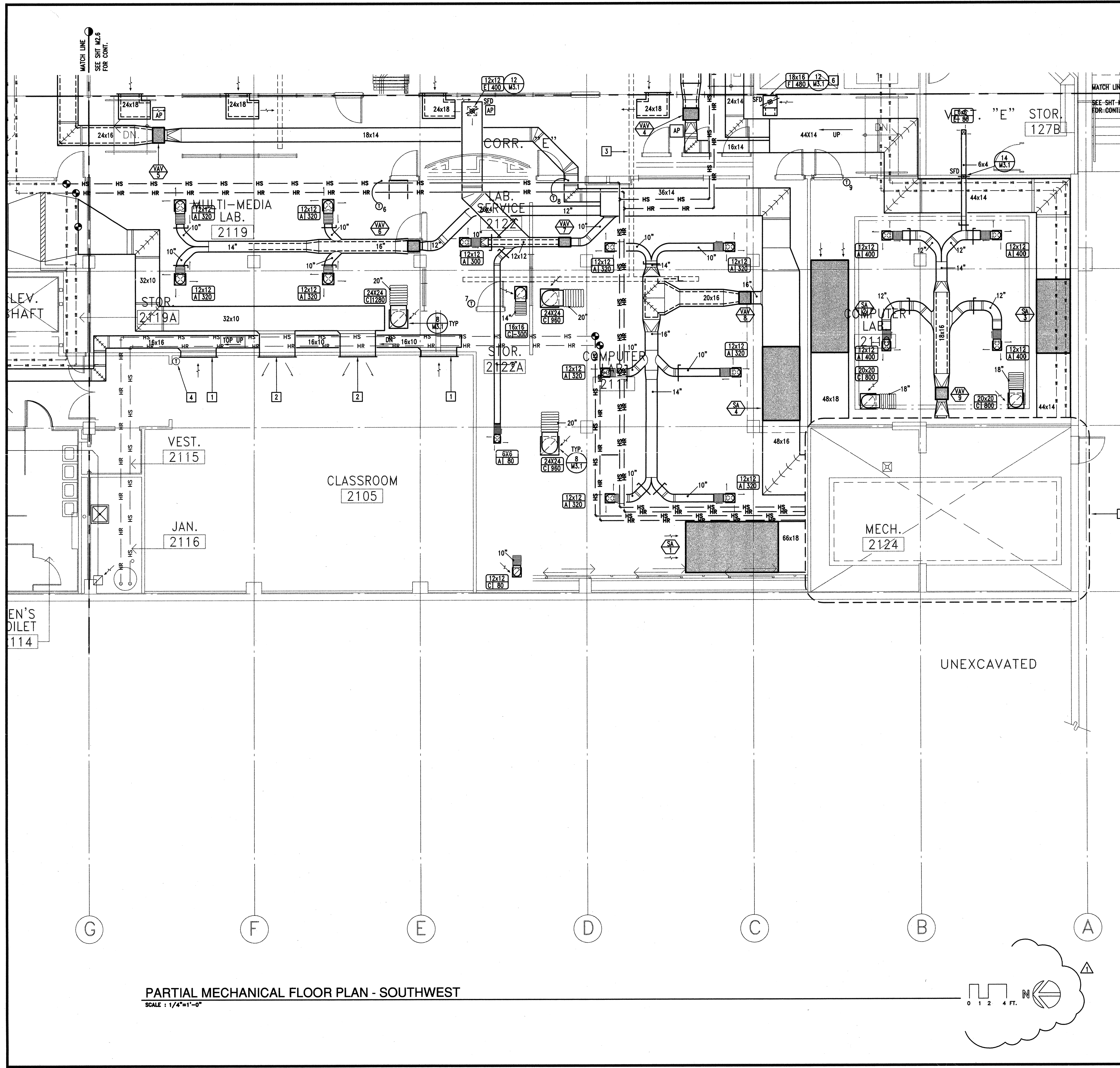
MECE
MECHANICAL ENGINEERING CONSULTANTS
621 W. Michelson Ave. Suite A Santa Barbara, CA 93101
Tel (805) 957-4632

CENTER FOR ADVANCED LEARNING TECHNOLOGY
SKYLINE COLLEGE
 SAN MATEO COUNTY COMMUNITY COLLEGE DISTRICT
 SAN BRUNO, CALIFORNIA 94066
 3300 COLLEGE DRIVE

		BID SET REVISION 10/25/01 AVR	
		NO.	DATE
REVISION			

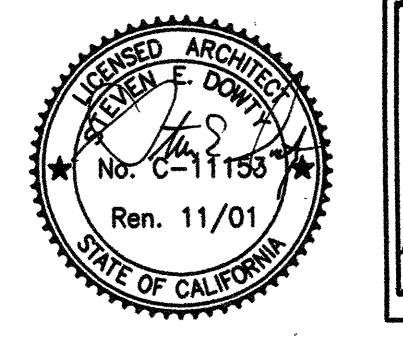
DRAWN	J. SIERRA, E. MARKHAM
CHECKED	AVR
DATE	03-21-2001
JOB NO.	98-03
SHEET TITLE	
PARTIAL MECHANICAL FLOOR PLAN - SOUTHWEST	

SHEET 06	M 2.3
OF 50	



KEYPLAN
SCALE: NTS

PARTIAL MECHANICAL FLOOR PLAN - SOUTHWEST
SCALE: 1/4"=1'-0"



IDENTIFICATION STAMP
DIV. OF THE STATE ARCHITECT
OFFICE OF REGULATION SERVICES
APPL 01-103735
DATE 08/27/01

E:\WB-KRUGERBENSENZIEMER\98014\SKYLINE\ADV\LEARN\98014\M2_3.dwg, 10/26/2001 11:32:33 AM, Chris, ACAD2002 esse Final.pcd, AcadE1 - 30 x 42 in., 1:1