

KRUGER BENSEN ZIEMER
ARCHITECTS, INC. AIA
30 W. APPELLAGA SANTA BARBARA, CA
805/963-1725 93101

STEVE DOWTY, A.I.A.
PRINCIPAL IN CHARGE

GERALD SHUSTA
PROJECT ARCHITECT

All ideas, design arrangements and plans indicated or represented by this drawing are owned by and are the property of Kruger-Bensen-Ziemer, AIA architects, and were created, revised and developed for use on, and in connection with, the specified project. None of such ideas, design arrangements or plans shall be used by or disclosed to any person, firm or corporation for any purpose whatsoever without the written permission of Kruger-Bensen-Ziemer.

480014
MECHANICAL
ENGINEERING
CONSULTANTS
Suite A
Santa Barbara, Ca 93101
Tel (805) 967-4632

CENTER FOR ADVANCED LEARNING TECHNOLOGY
 SKYLINE COLLEGE
 SAN MATEO COUNTY COMMUNITY COLLEGE DISTRICT
 SAN BRUNO, CALIFORNIA 94066
 3300 COLLEGE DRIVE

NO.	DESCRIPTION	DATE	BY
REVISION			

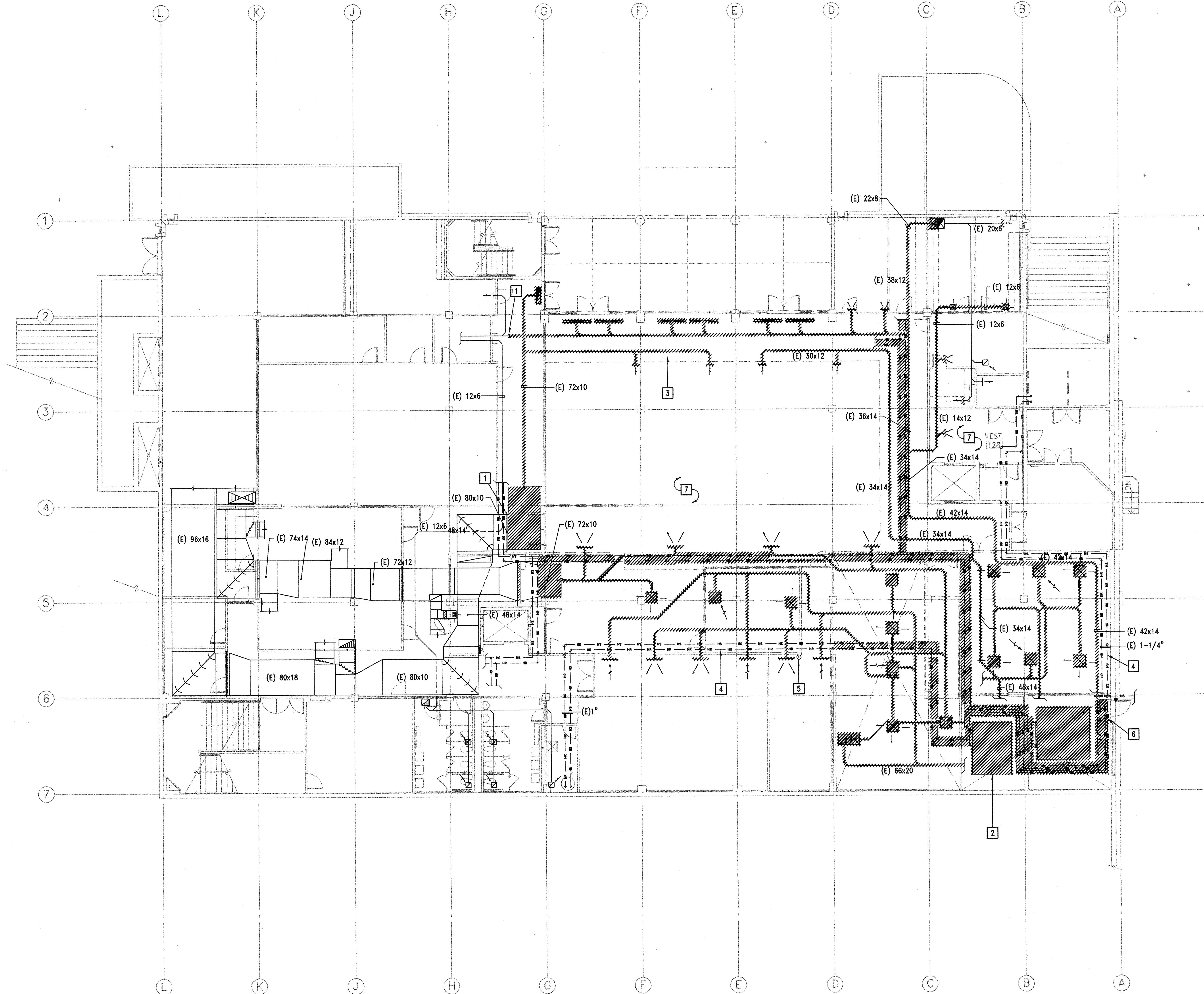
DRAWN	J. SIERRA, E. MARKHAM
CHECKED	AVR
DATE	03-21-2001
JOB NO.	98-03
SHEET TITLE	
MECHANICAL DEMOLITION FLOOR PLAN	
SHEET	RECEIVED
OF	MEC

KEYNOTES

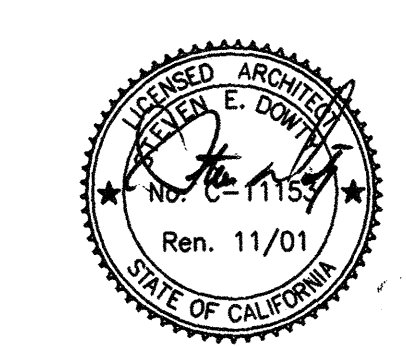
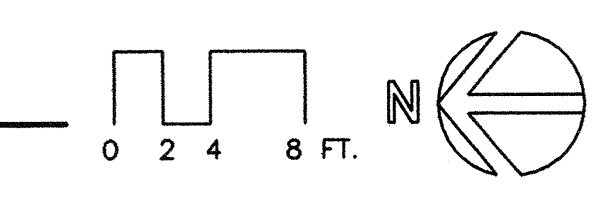
- 1 CAP (E) DUCT.
- 2 REMOVE DUCTS AND HYAC EQUIPMENT AND PIPING WITHIN MECHANICAL ROOM.
- 3 REMOVE DUCTS AND REGISTERS AND PIPING IN AREAS OF (N) WORK, EXCEPT AS SHOWN.
- 4 REROUTE PIPING AS REQUIRED TO AVOID (N) WORK.
- 5 RELOCATE (E) T-STAT, SEE M2.2 FOR (N) LOCATION.
- 6 RELOCATE (E) PUMP.
- 7 PLUMBING PIPING IS TO REMAIN EXCEPT AS SHOWN, TYP.

DEMOLITION NOTES

1. FIELD VERIFY ALL EXISTING CONDITIONS PRIOR TO START OF ANY DEMOLITION INDICATED ON DRAWINGS.
2. DEMO DRAWINGS ARE SCHEMATIC, BASED ON CURSORY FIELD OBSERVATION. REPORT ALL DISCREPANCIES TO ARCHITECT BEFORE DISTURBING EXISTING WORK.
3. SEE DIVISION 1 SPECIFICATIONS FOR CONTRACTOR'S CONDITIONS OF ACCEPTANCE OF EXISTING CONDITIONS.
4. COORDINATE UTILITY OUTAGES WITH ALL AFFECTED PARTIES, INCLUDING THE UTILITY COMPANIES, OWNER AND OCCUPANTS OF BUILDINGS. VERIFY CONSTRUCTION PHASING WITH ARCHITECT.
5. REMOVE, RELOCATE AND EXTEND EXISTING WORK TO ACCOMMODATE NEW CONSTRUCTION.
6. ISOLATE FIXTURES AND EQUIPMENT TO BE REMOVED BY SHUTTING OFF MAINS. DRAIN ALL WATER PIPING BEFORE REMOVING. REMOVE ALL UNUSED WATER PIPING AND CAP AT NEAREST ACTIVE BRANCH TEE. DO NOT LEAVE DEAD END RUNS. DISINFECT AND FLUSH ENTIRE POTABLE WATER SYSTEM OF ANY DOMESTIC SYSTEM WHERE CROSS CONNECTION IS SUSPECTED TO HAVE OCCURRED.
7. REMOVE ANY ABANDONED ABOVE GRADE PIPING FROM PRIOR WORK.
8. PROTECT EXISTING STRUCTURE AND WORK FROM DAMAGE DURING DEMOLITION.
9. CLEAN AND REPAIR EXISTING MATERIALS AND EQUIPMENT TO BE RELOCATED OR REUSED.
10. COORDINATE REMOVAL OF INSULATION WITH HAZARDOUS MATERIALS DEMOLITION CONTRACTOR.
11. CAREFULLY REMOVE FIXTURES AND EQUIPMENT. PROVIDE OWNER THE OPTION OF SALVAGING ANY EQUIPMENT OR MATERIALS BEING REMOVED.



MECHANICAL DEMOLITION FLOOR PLAN
SCALE : 1/8"=1'-0"



IDENTIFICATION STAMP
DIV. OF THE STATE ARCHITECT
OFFICE OF REGULATION SERVICES
APPL 01-103735
Ren. 11/01
DATE 06/27/01

E:\KB\kruger-bensen-ziemer\000014-Skyline\demolition\000014-M2_1.dwg, 06/27/2001 09:32:39 PM, Chris. Estep, p3, AutoCAD LT 2000, 30 x 42 in., 1:1