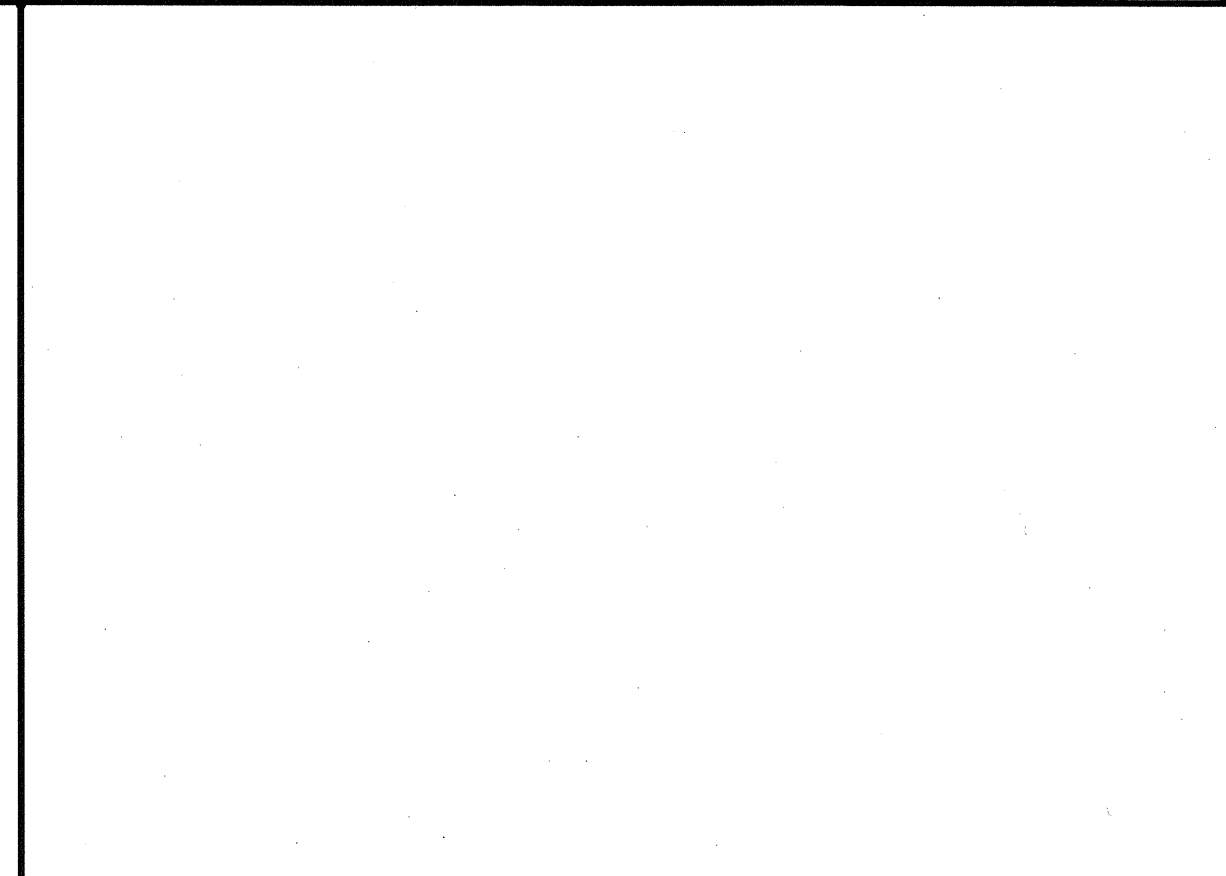
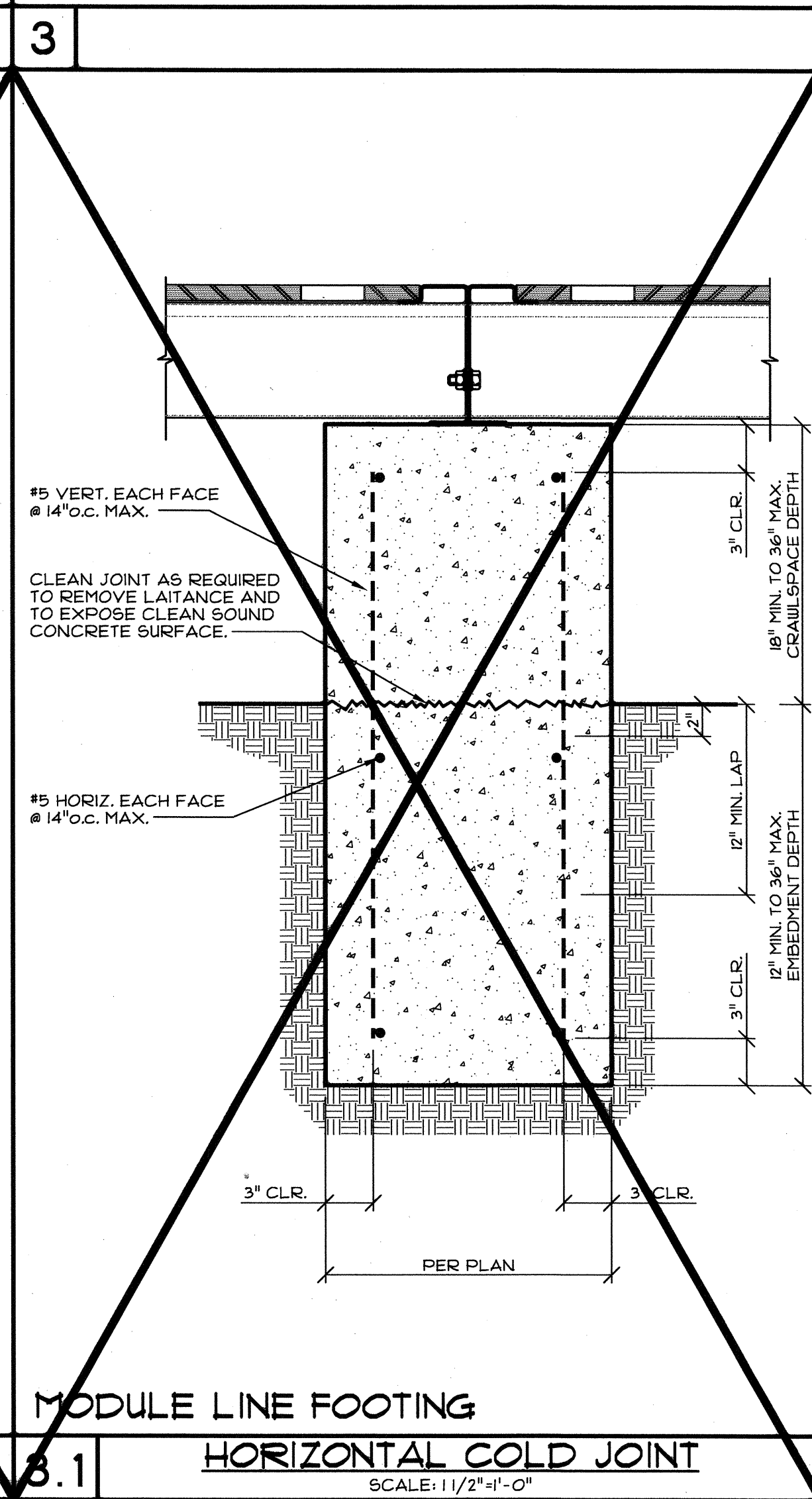
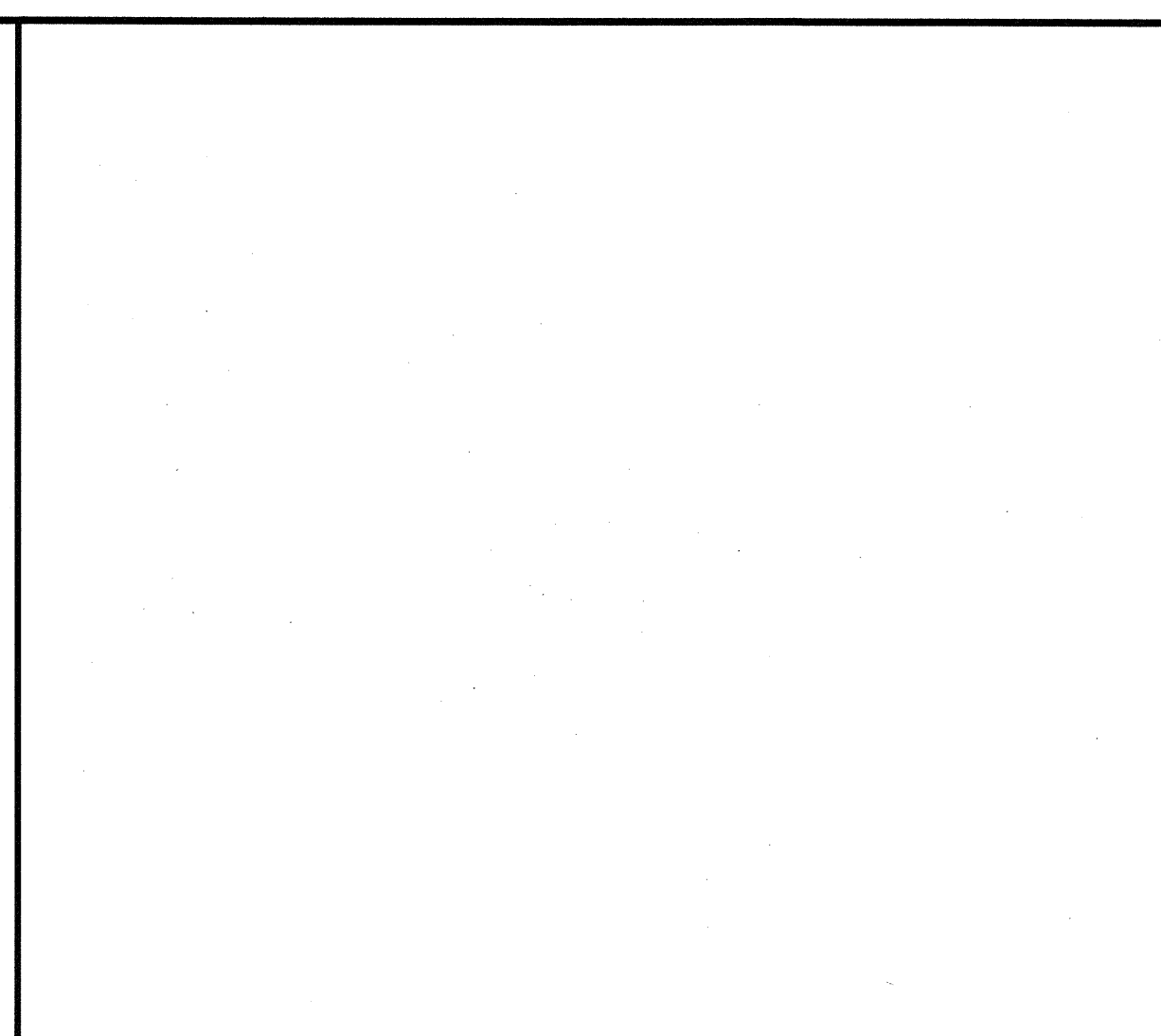
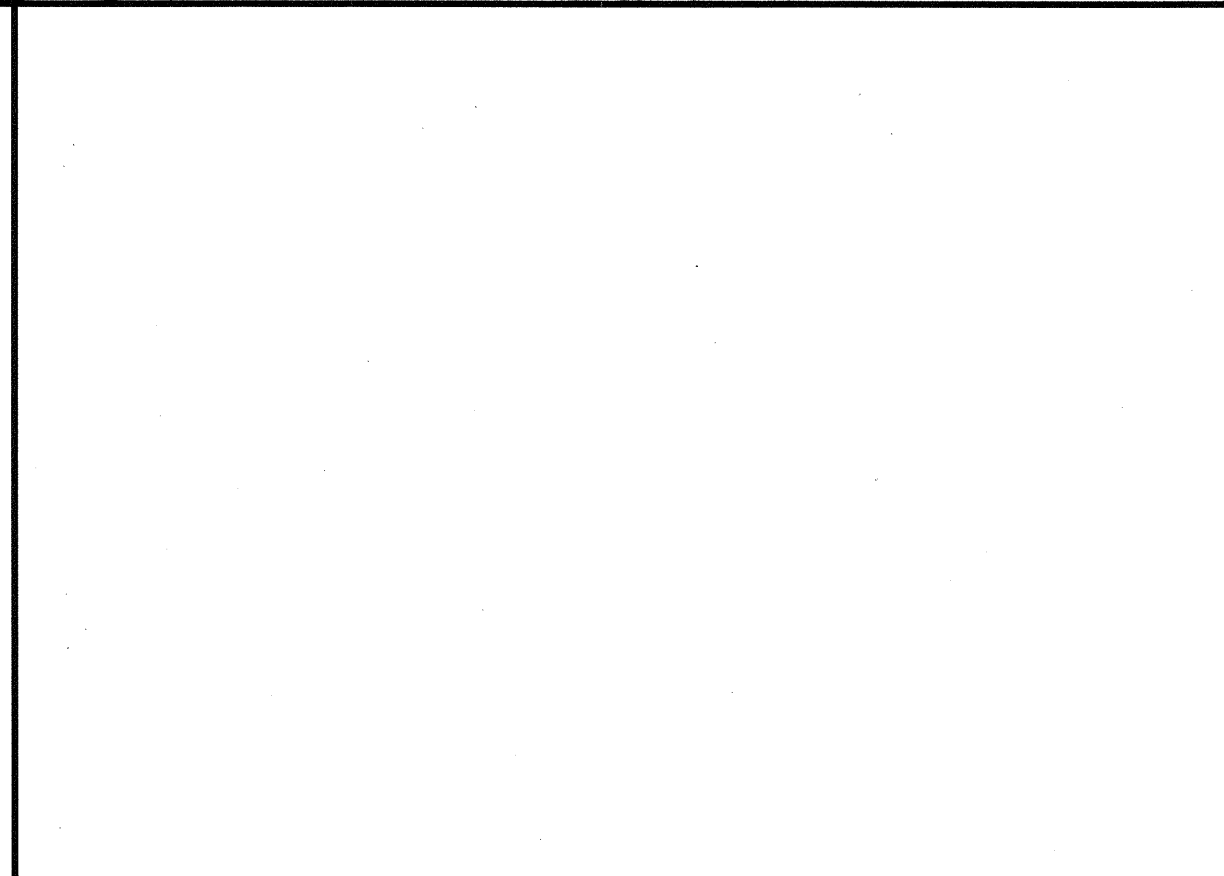
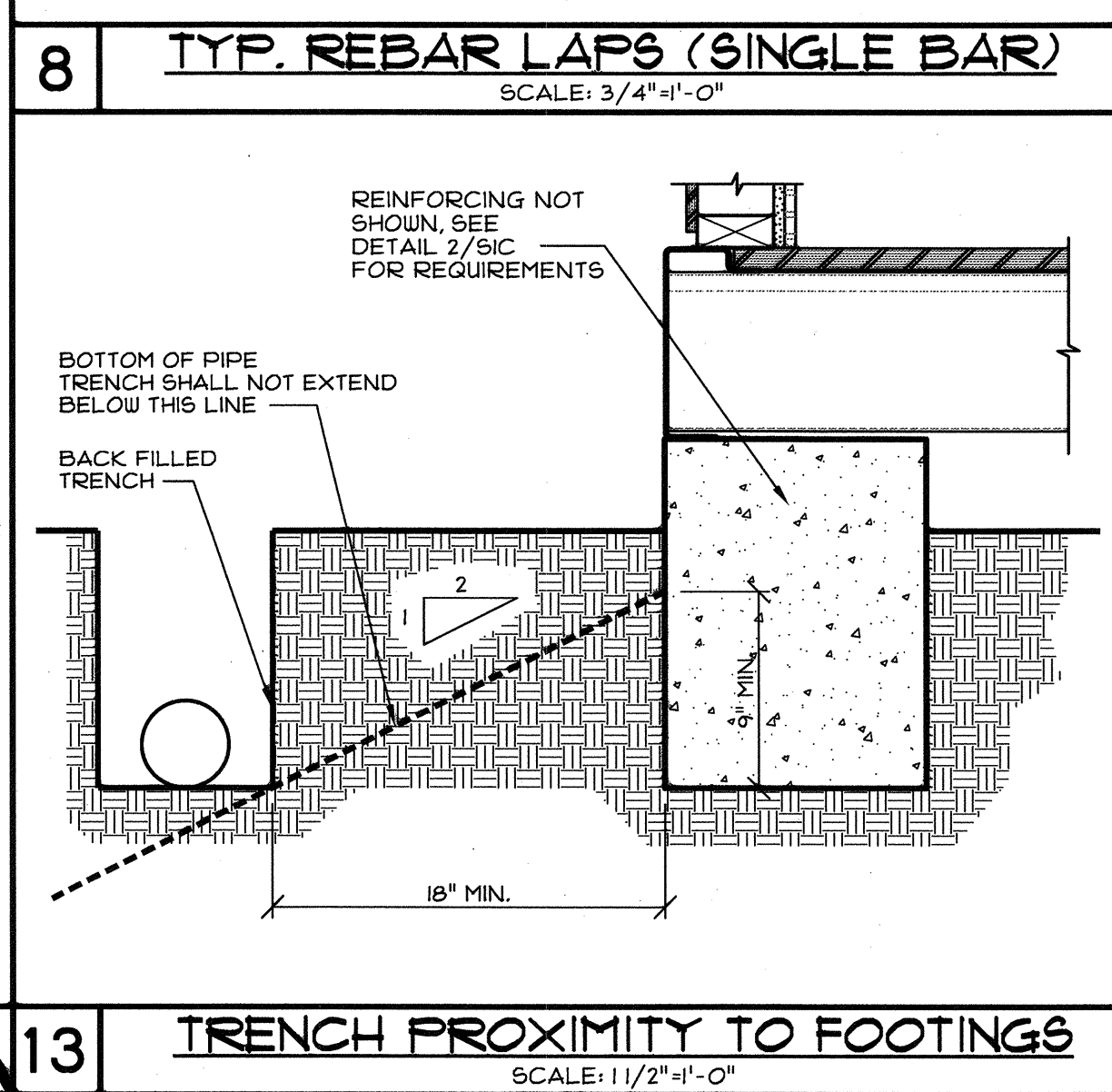
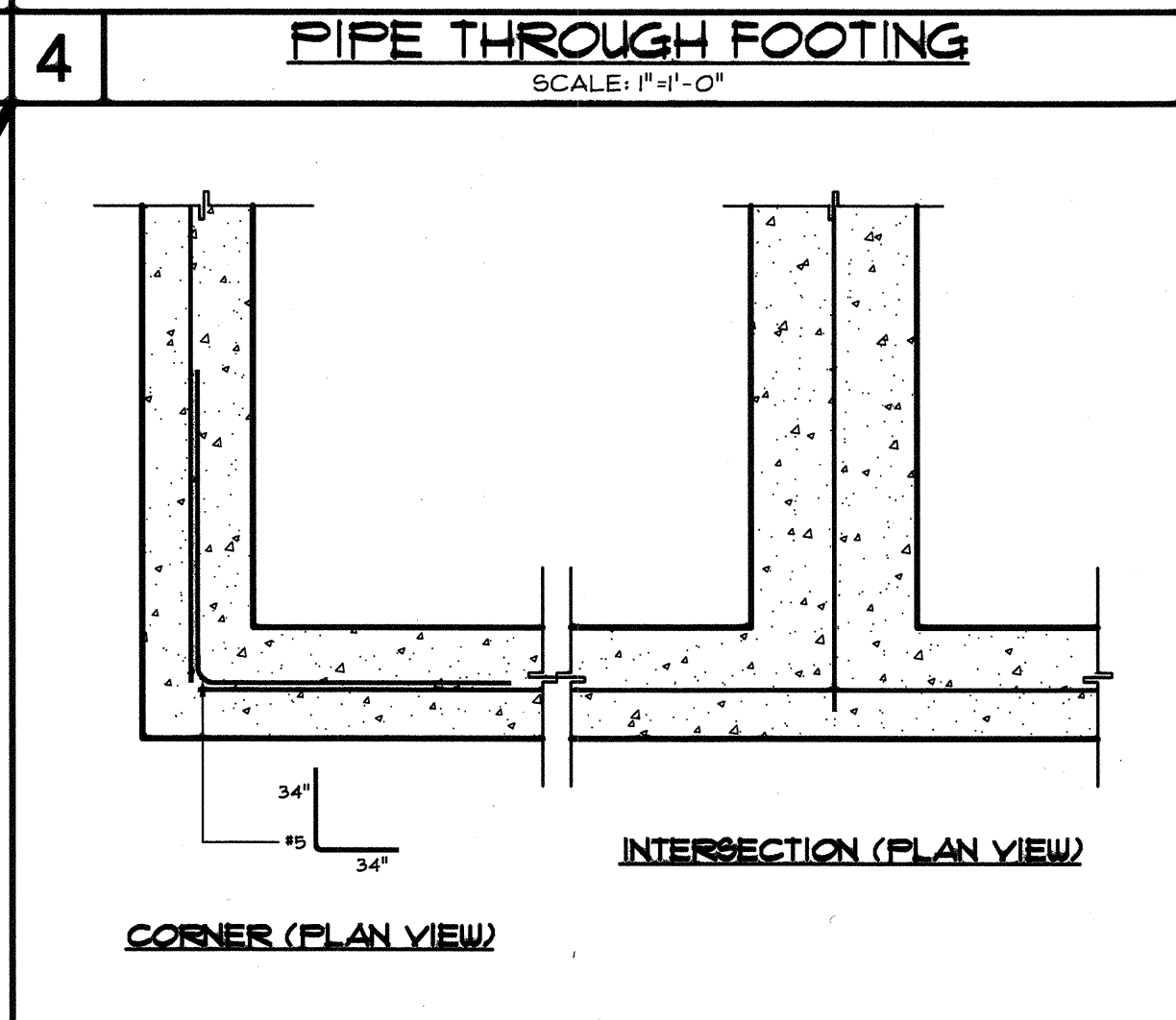
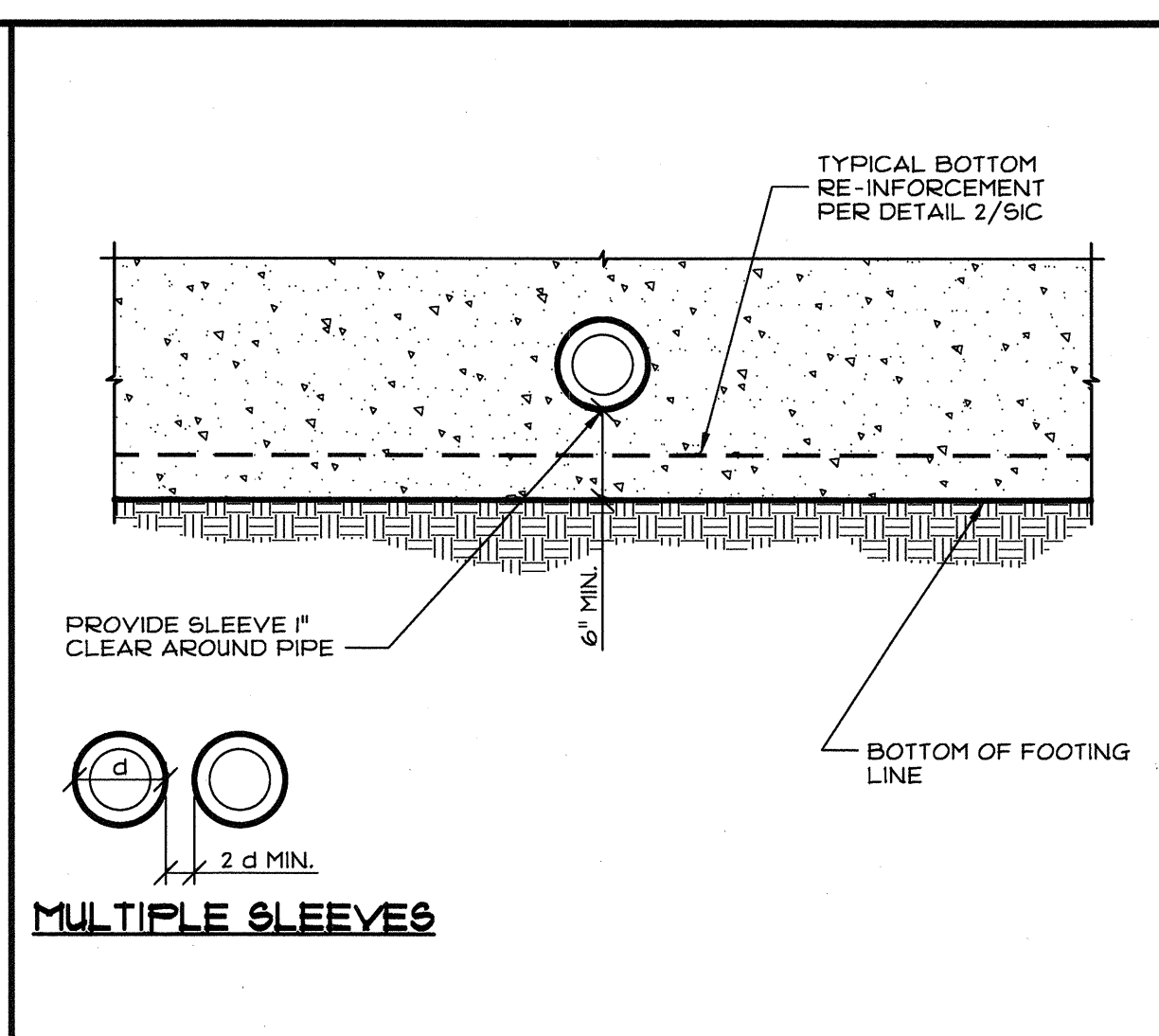


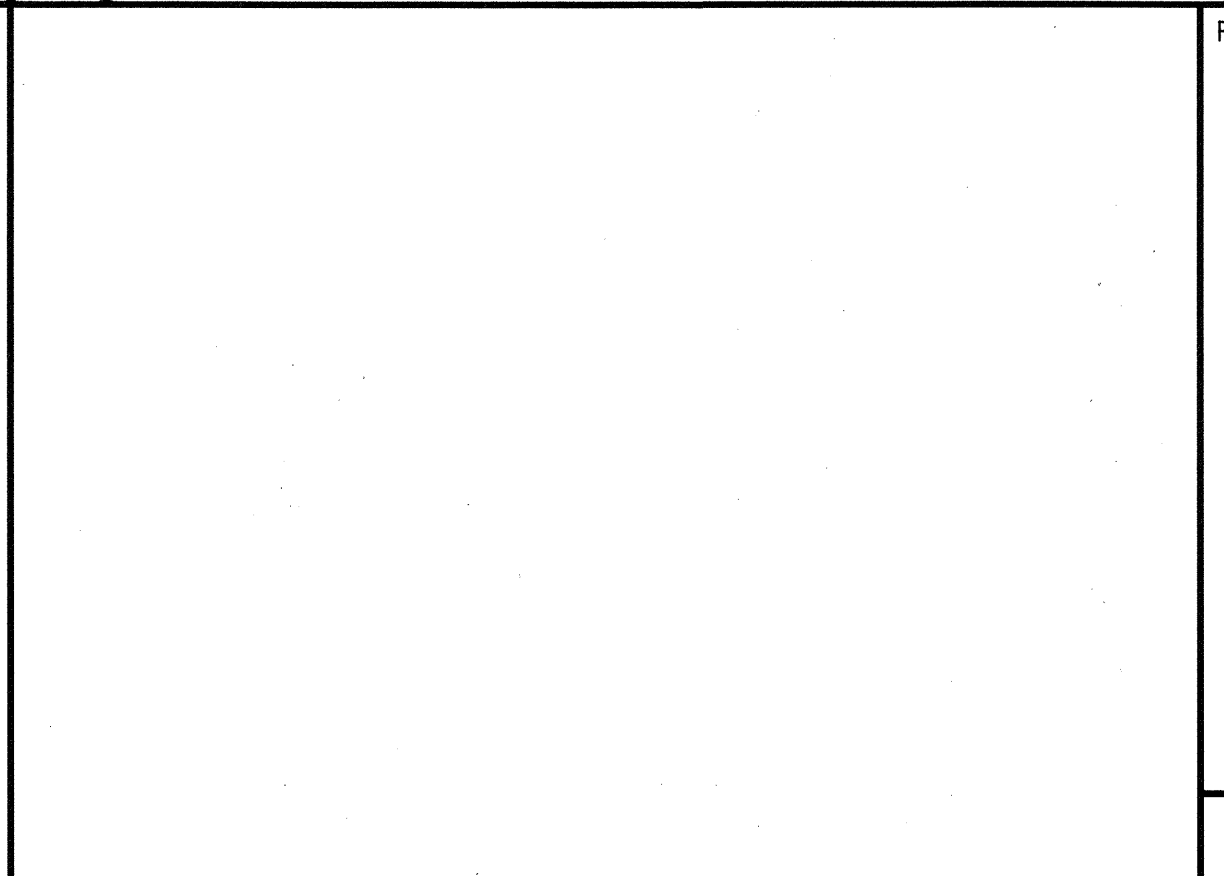
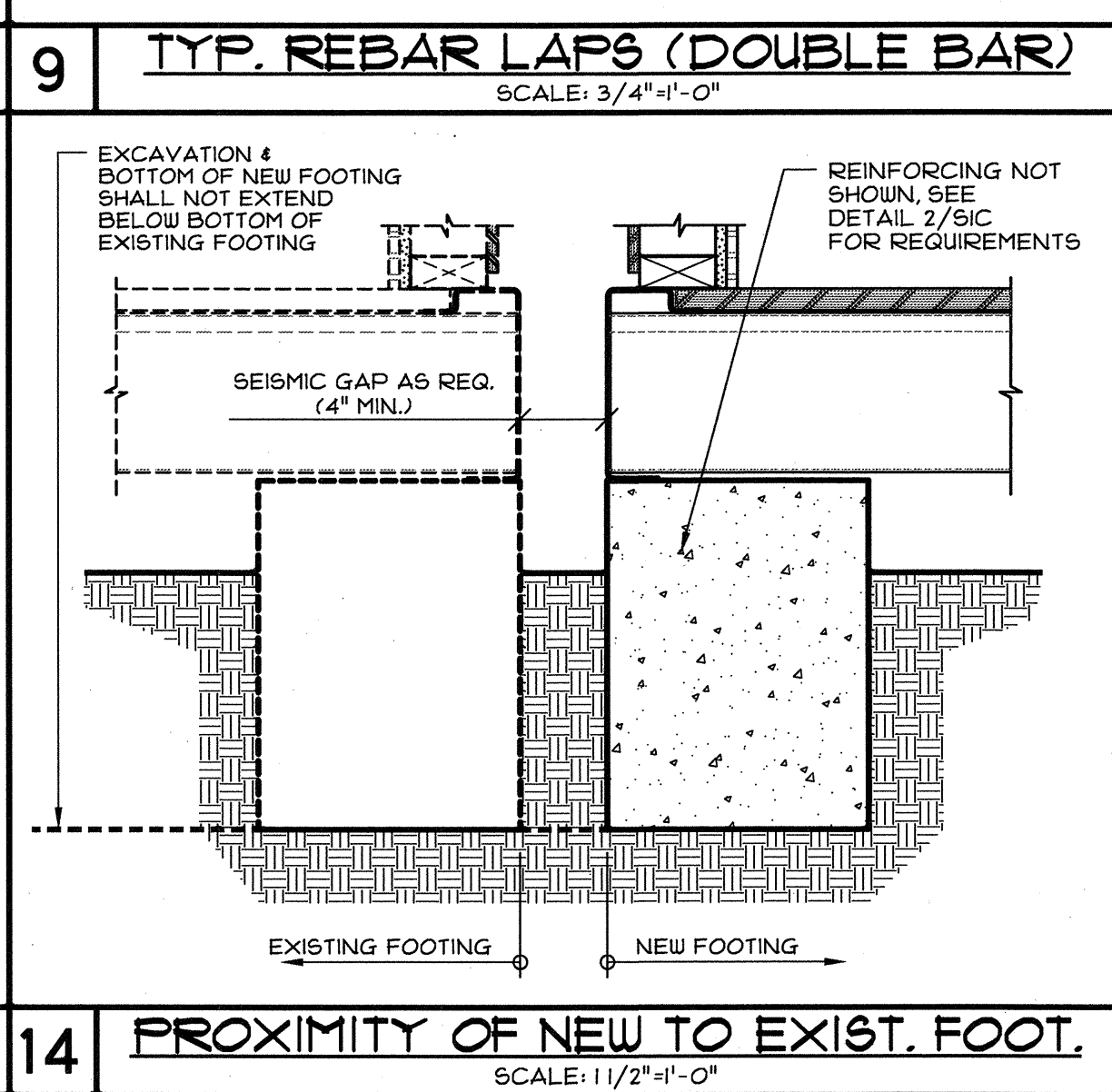
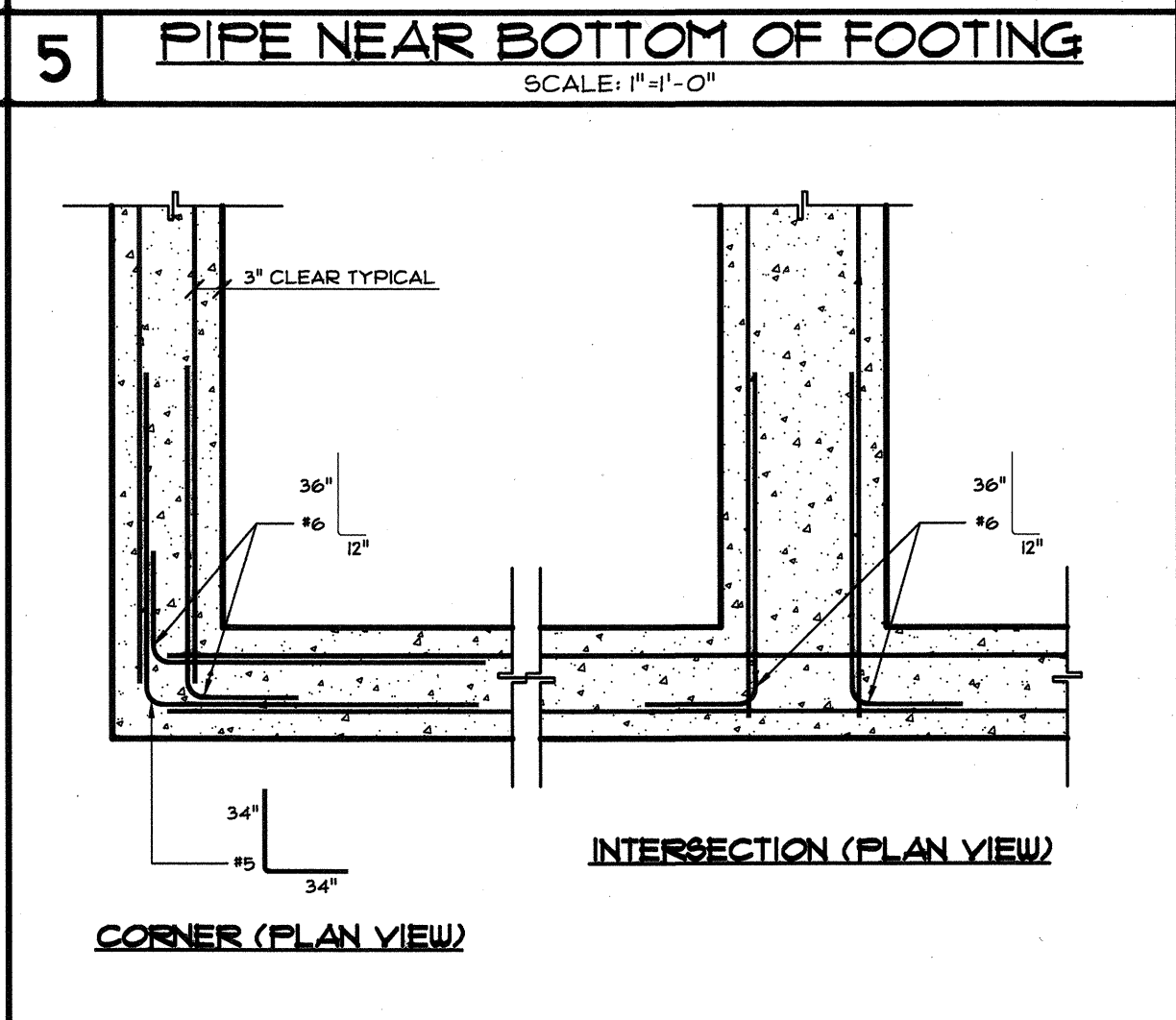
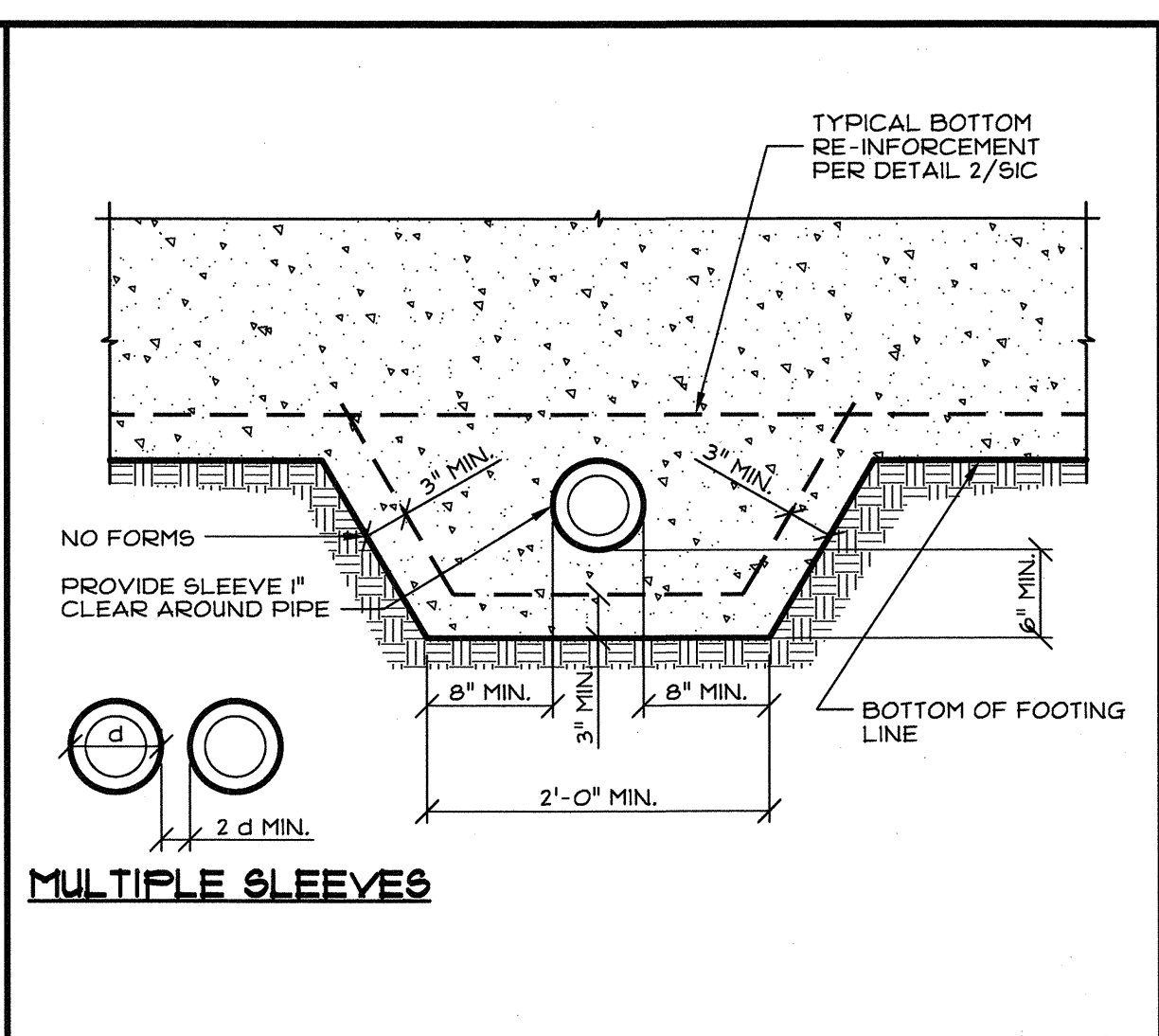
11 TYP. REINFORCING BAR BENDS
SCALE: NONE



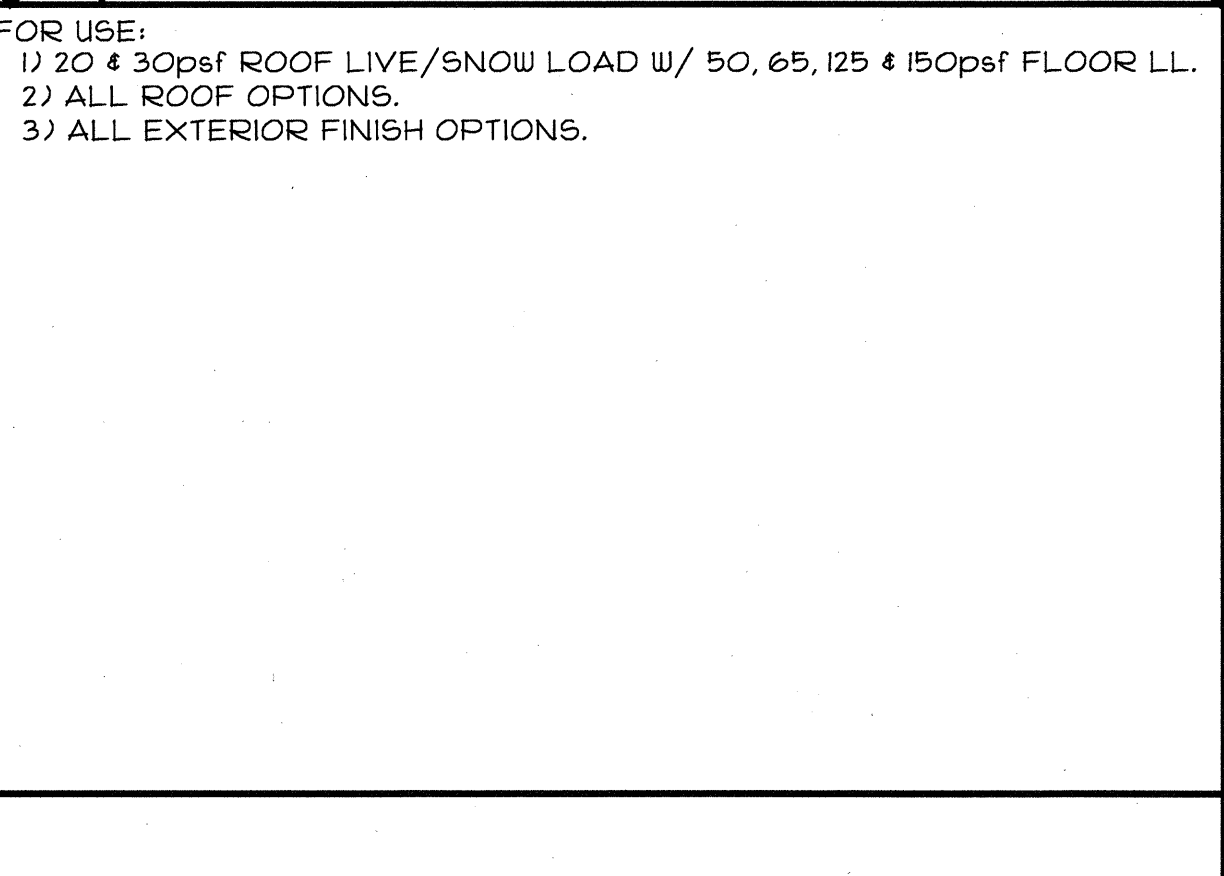
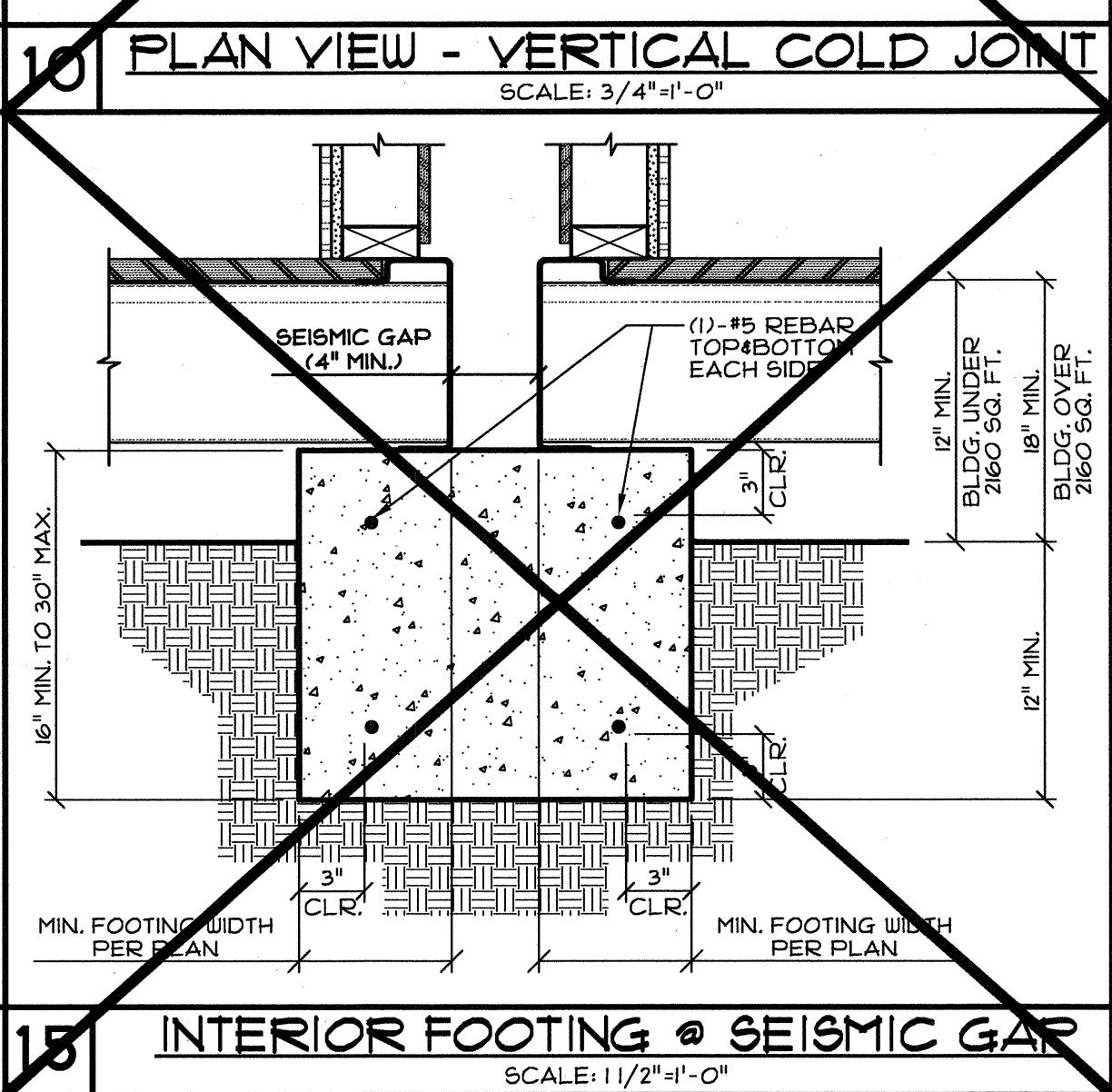
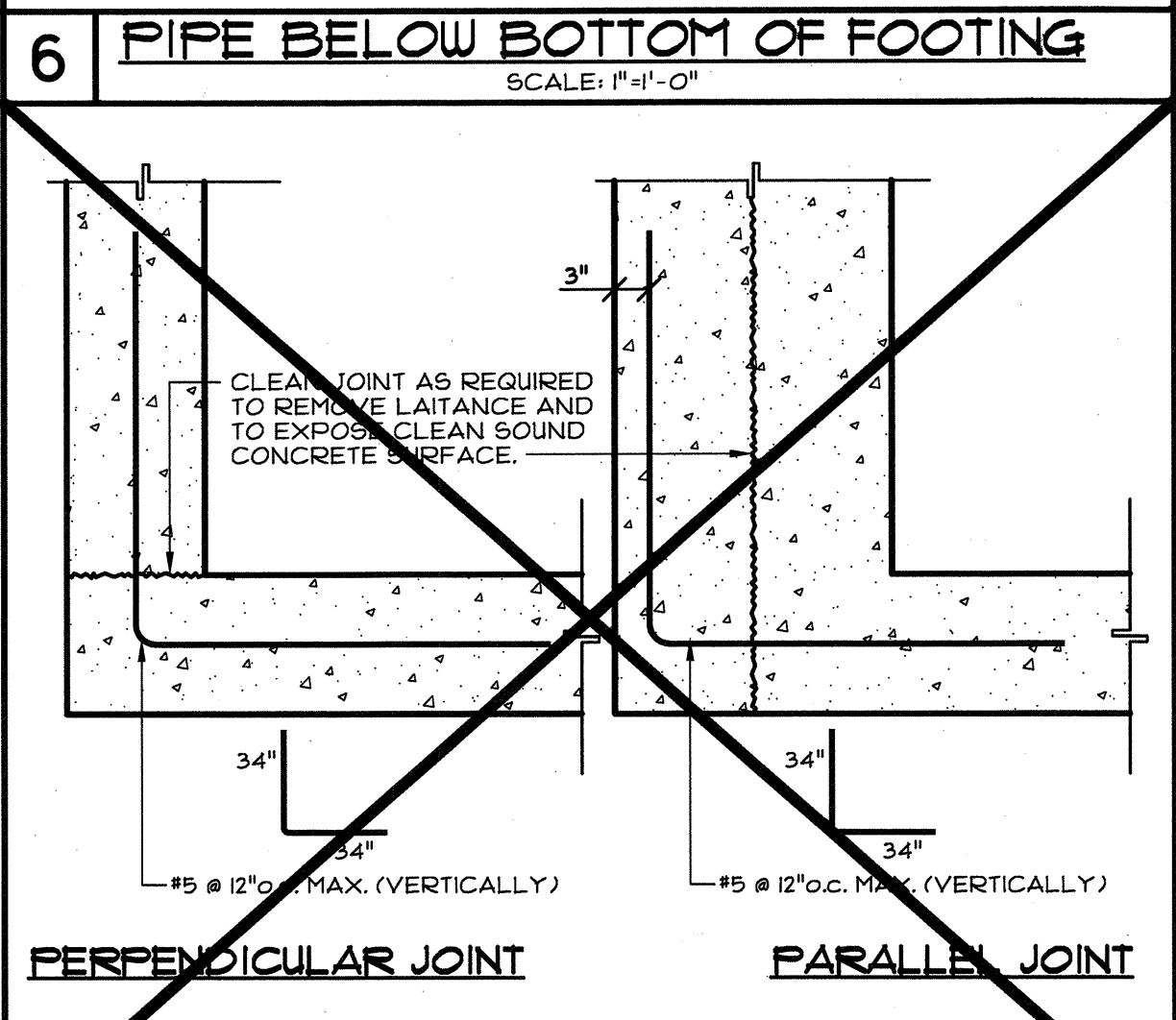
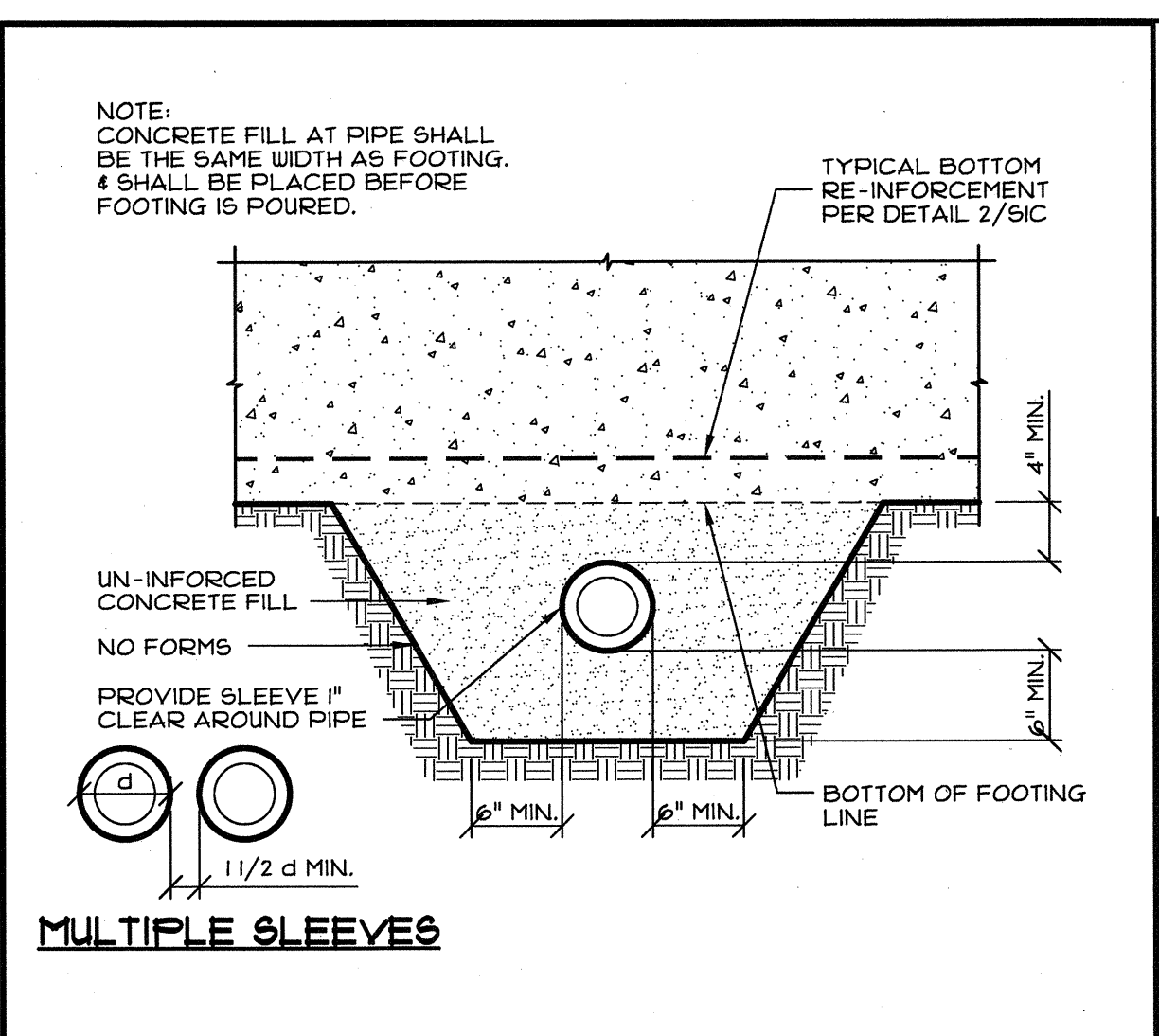
12 APPROVALS



13 TRENCH PROXIMITY TO FOOTINGS
SCALE: 1 1/2" = 1'-0"



14 PROXIMITY OF NEW TO EXIST. FOOT.
SCALE: 1 1/2" = 1'-0"



15 INTERIOR FOOTING @ SEISMIC GAP
SCALE: 1 1/2" = 1'-0"

CYS
STRUCTURAL ENGINEERS INC.
1700 Ciccardi Oaks Dr., Suite 200
San Marcos, CA 92069
(916) 920-2020 (916) 920-1556 FAX
www.cyscadr.com

REGISTERED PROFESSIONAL ENGINEER
ARCHITECT/ENGINEER/PLUMBER
No. 52030
EXP. 9/30/13
STRUCTURAL
STATE OF CALIFORNIA

THESE DRAWINGS ARE PRELIMINARY
AND NOT FOR CONSTRUCTION
UNLESS STAMPED & SIGNED BY
THE ENGINEER OF RECORD.

ENVIROPLEX, INC.
4777 E. CARPENTER ROAD STOCKTON, CA 95215, (209) 466-8000

RELOCATABLE RESTROOM BUILDINGS
FOR LA CANADA COLLEGE
SAN MARCO COMMUNITY COLLEGE DISTRICT

TYPICAL FOOTING DETAILS

FOR USE:
1) 20 & 30psf ROOF LIVE/SNOW LOAD W/ 50, 65, 125 & 150psf FLOOR LL.
2) ALL ROOF OPTIONS.
3) ALL EXTERIOR FINISH OPTIONS.

REV / DATE:	
JOB No.:	12-19
DRAWN BY:	JM
DATE:	07-18-12

THIS MODULAR BLDG. HAS BEEN ENGINEERED BY A REGISTERED STRUCTURAL ENGINEER AND PREVIOUSLY REVIEWED & APPROVED BY THE DIVISION OF THE STATE ARCHITECT, FIRE & LIFE SAFETY AND ACCESS COMPLIANCE SECTION

15 APPROVALS