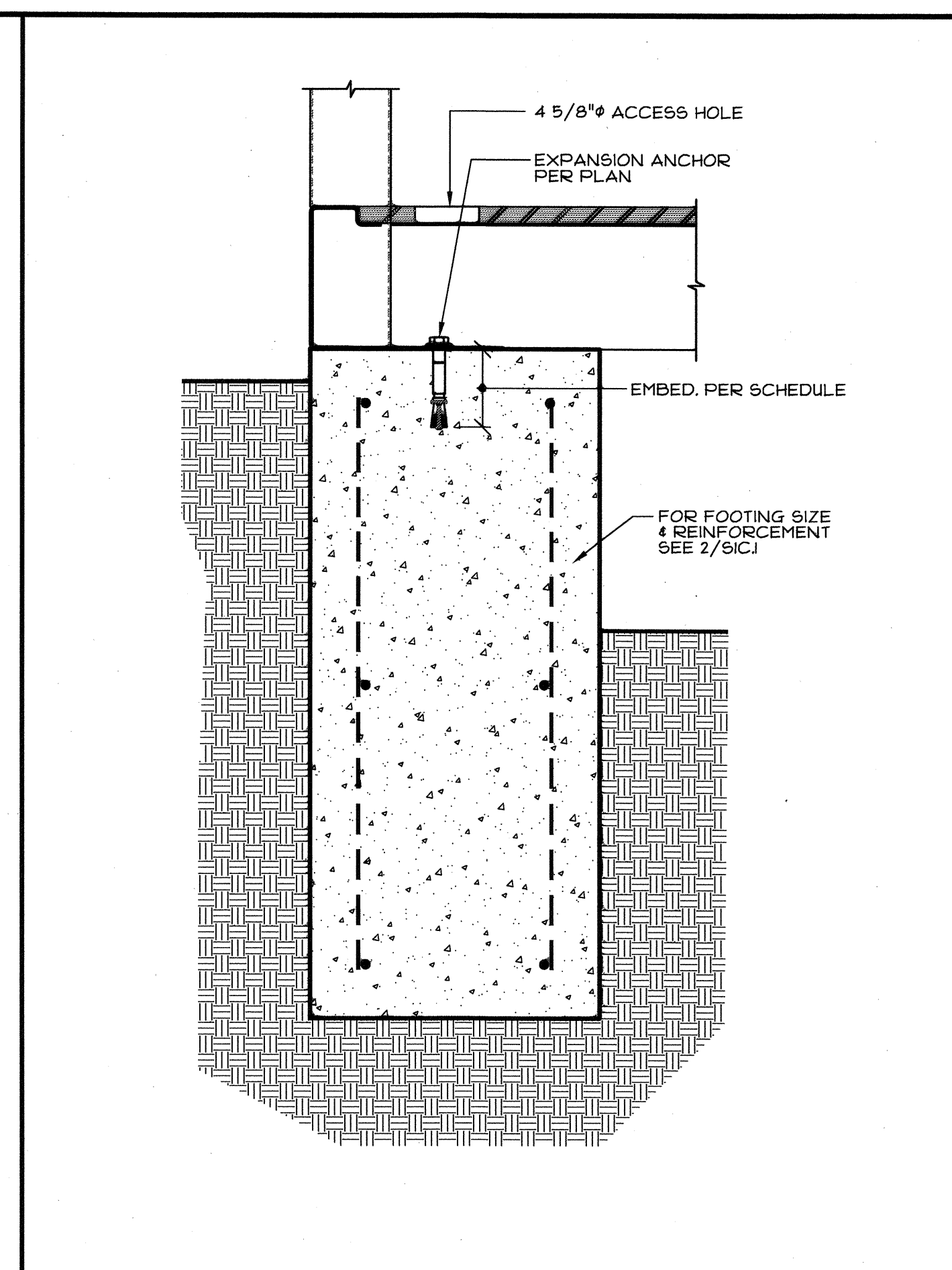
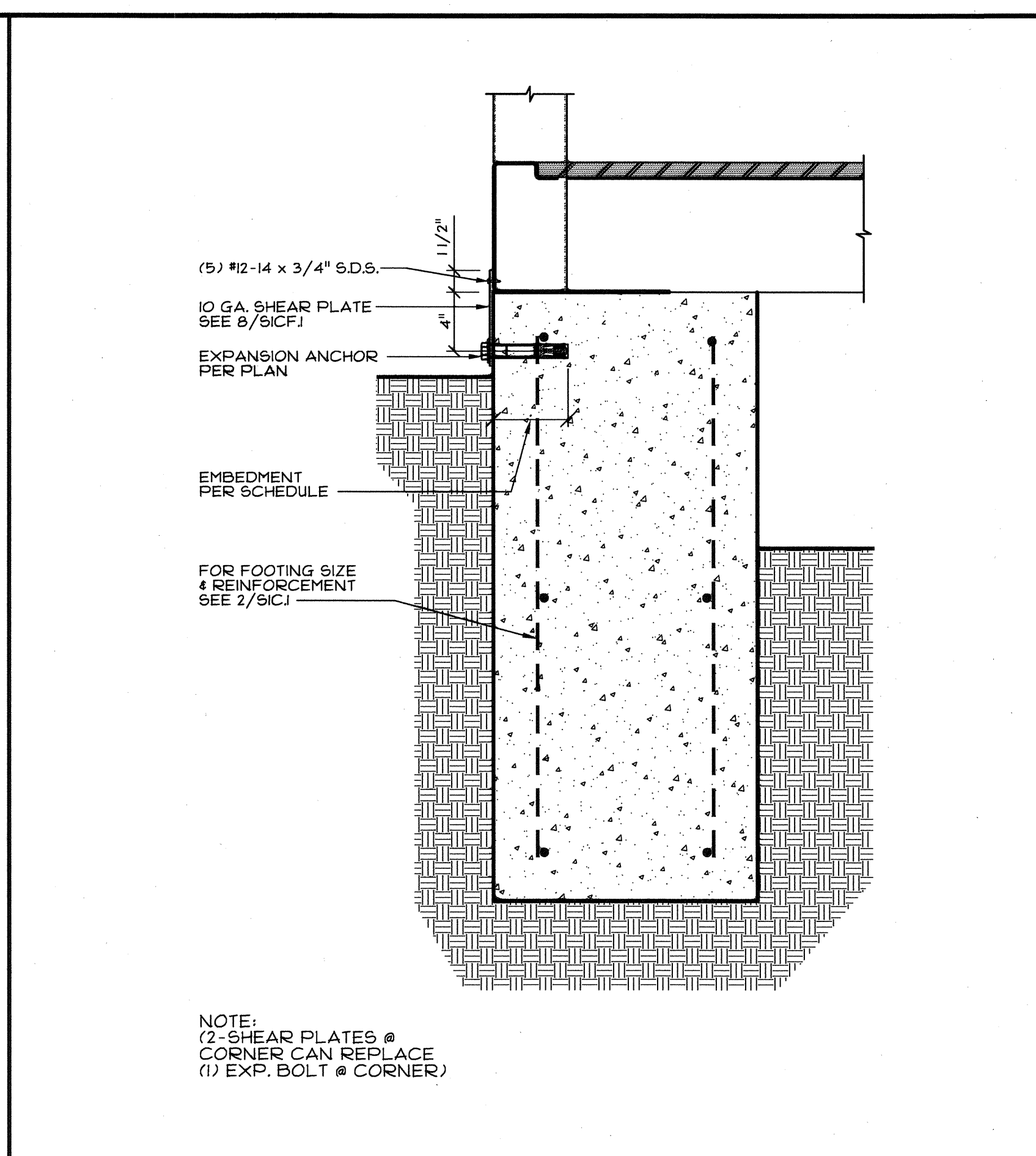


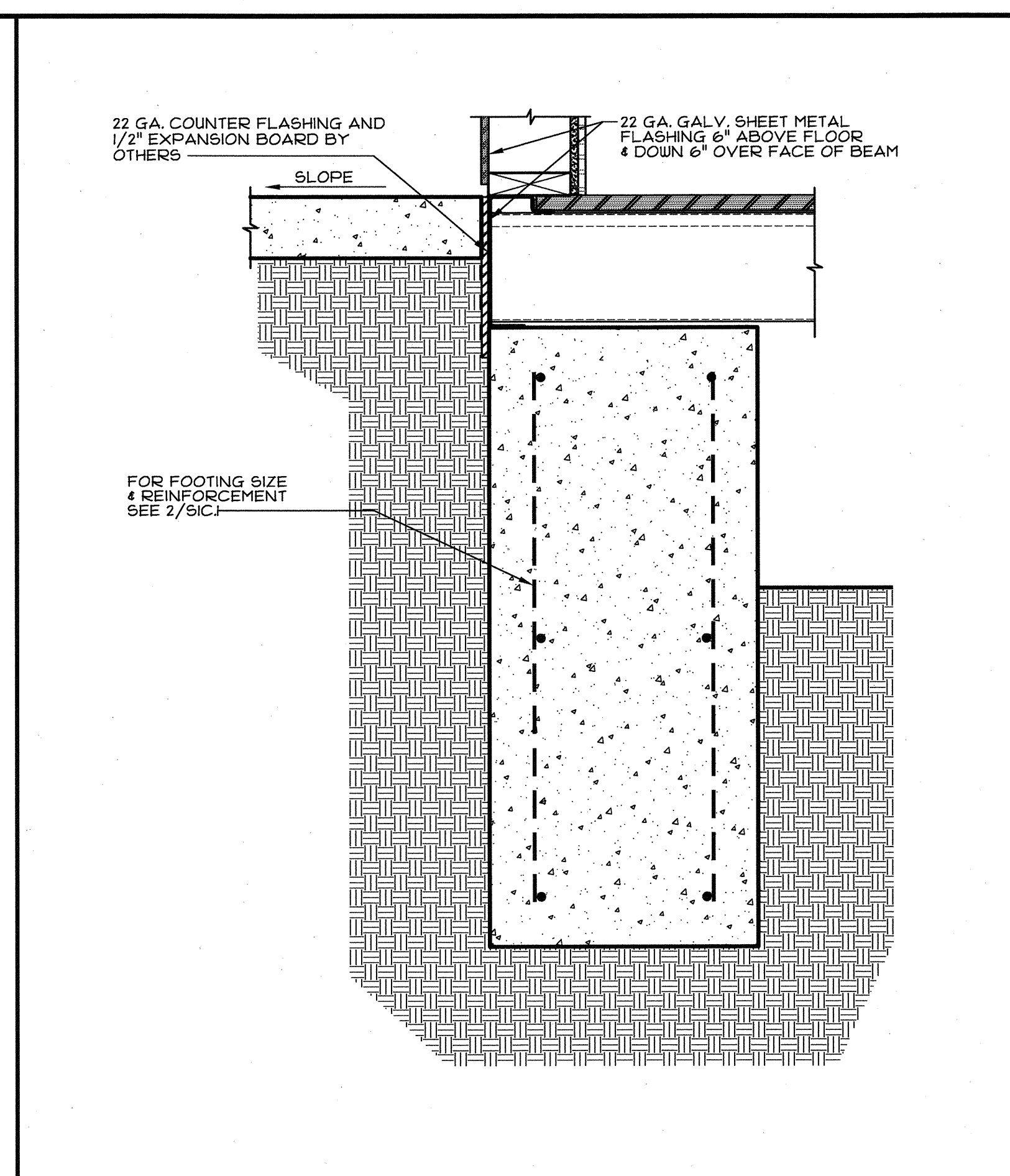
2 PERIMETER FOOTING DETAIL
SCALE: 1-1/2"=1'-0"



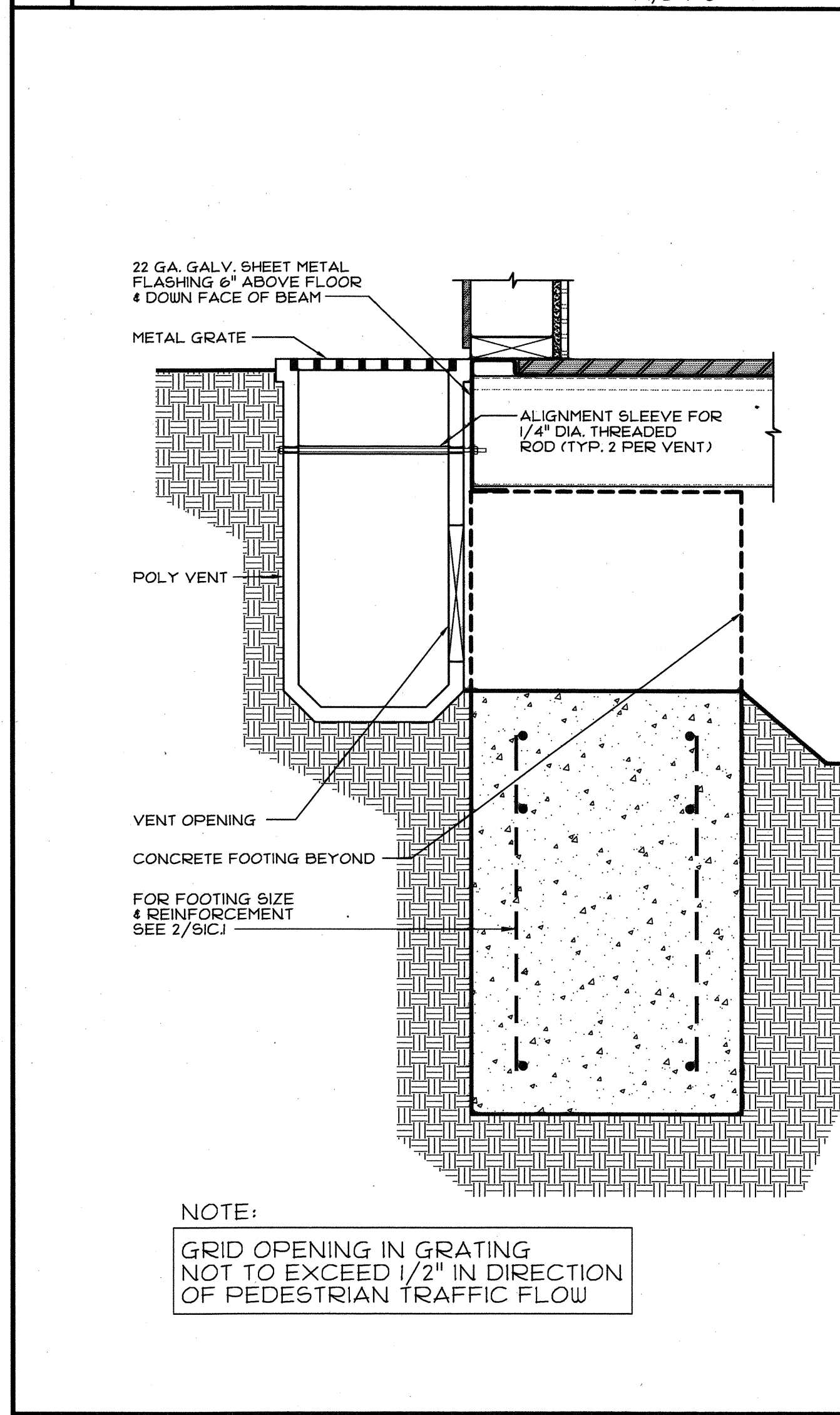
4 CORNER ANCHORING DETAIL
SCALE: 1-1/2"=1'-0"



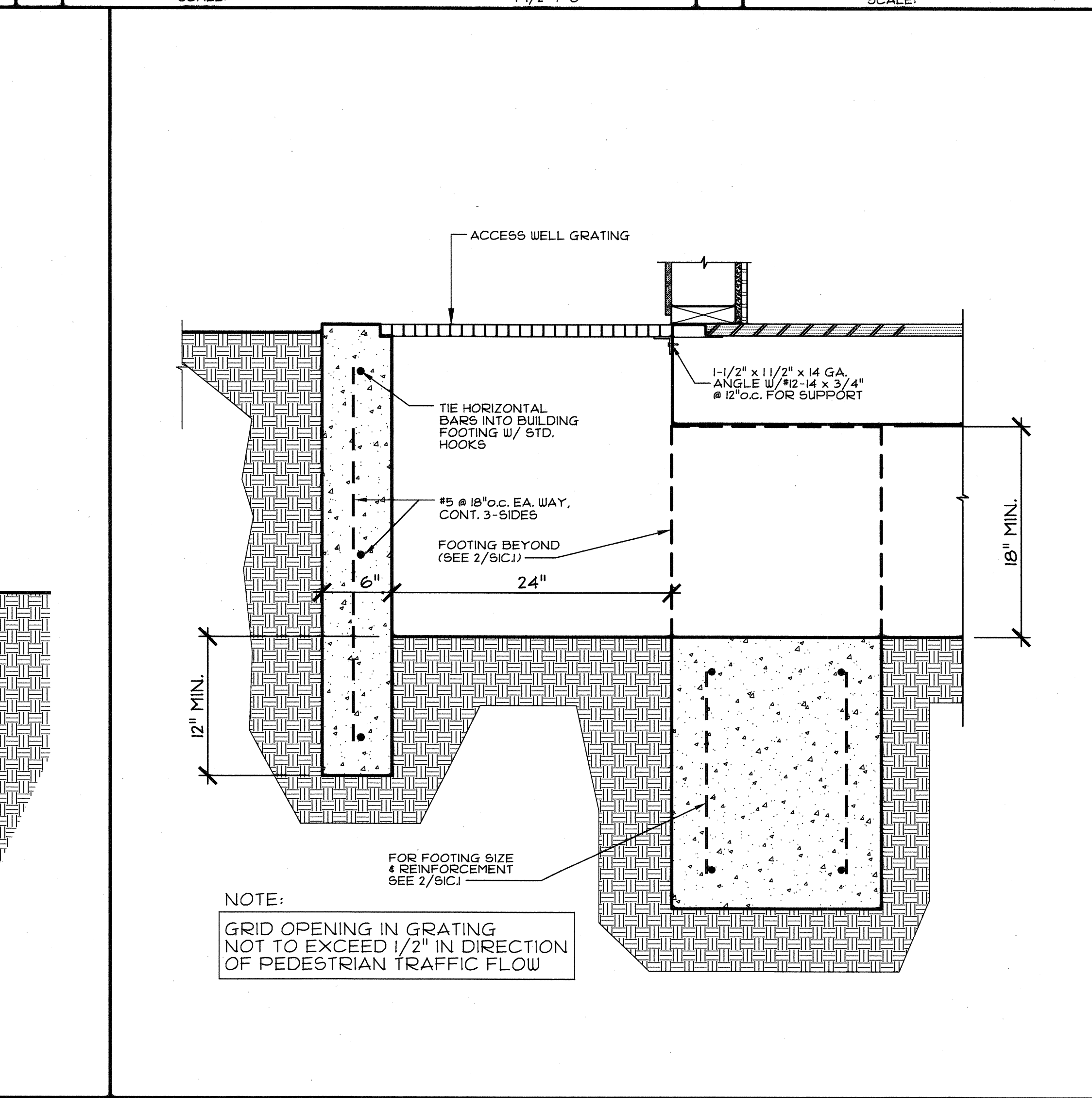
5 ALTERNATE SHEAR PLATE DETAIL
SCALE: 1-1/2"=1'-0"



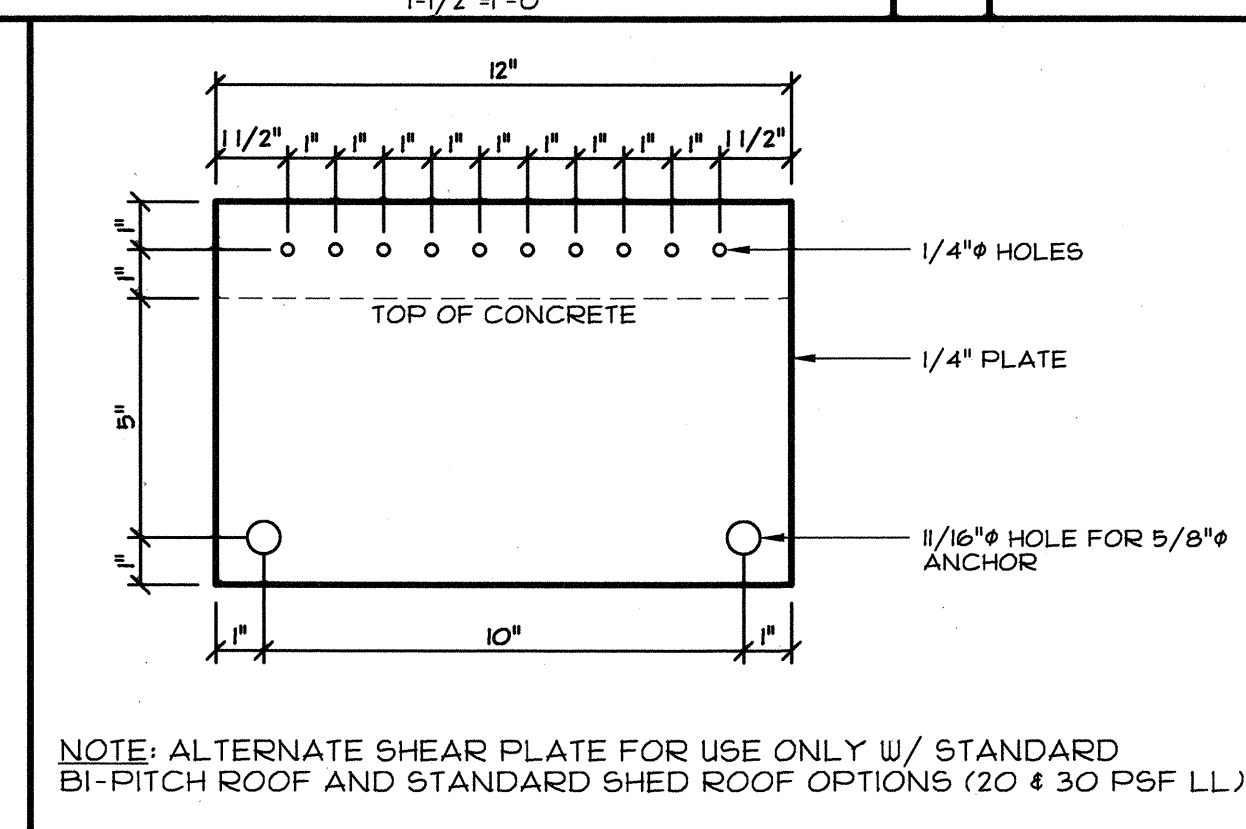
7 PERIMETER FLASHING DETAIL
SCALE: 1-1/2"=1'-0"



10 POLYVENT DETAIL
SCALE: 1-1/2"=1'-0"



14 ACCESS VENT WELL DETAIL
SCALE: 1-1/2"=1'-0"



8 ALTERNATE SHEAR PLATE
SCALE: 3\"/>

EXPANSION ANCHOR EMBEDMENT AND PROOF LOAD SCHEDULE

MANUFACTURE	SIZE	MIN. EMBED.	PROOF TEST	
			INSTALLATION TORQUE (FT#)	DIRECT TENSION (#) see note #1
HILTI KWIK BOLT-TZ	5/8"	4 3/4"	60	7015
SIMPSON STRONG BOLT	5/8"	5 1/8"	85	6069
HILTI KWIK BOLT-TZ	3/4"	4 3/4"	110	8170

NOTES:
1. TENSION TEST = 2x ALLOWABLE TENSION LOAD PER DSA IR 19-1.
2. NORMAL WEIGHT CONCRETE WITH $f_c = 3000$ psi TO COMPLY WITH IT04A.4.3 FOR MATERIAL TEST WAIVER.
3. FOR 125' FLOOR LIVE LOAD - USE THIS ANCHOR.

12 EXPANSION ANCHOR SCHEDULE

- NOTES:
- ALLOWABLE SOIL BEARING PRESSURE IS 3000 P.S.F. AFTER SITE IS QUALIFIED PER SITE PREPARATION AND GRADING RECOMMENDATIONS FOUND IN GEO-TECHNICAL INVESTIGATION BY "ADVANCED SOIL TECHNOLOGY INC." REPORT: PROJECT NO. 12618-S DATED MAY. 30, 2012
 - CONCRETE FOR FOOTINGS SHALL HAVE A MINIMUM STRENGTH $f'_c = 3000$ P.S.I., PER 1905A.11 MADE WITH 1" MAX ASTM C-33 AGGREGATES PER C.B.C SECTION 1903A.3
 - MIX DESIGN SHALL BE PER C.B.C SECTION 1905A.2
 - REINFORCING BARS SHALL BE A615, GRADE 40 MIN.
 - VENTILATION TO MEET REQUIREMENTS PER IR 16-1. PROVIDE MINIMUM 1 SQ. FT. OF VENT SPACE PER 150 SQ. FT. (PROVIDE 2" MINIMUM CLEARANCE)
 - ANCHORS TO BE EITHER:
A. HILTI KWIK BOLT TZ IN ACCORDANCE WITH ICC ESR-1917.
B. "SIMPSON" STRONG BOLT ANCHOR IN ACCORDANCE WITH ICC ESR-1111.
C. ANCHORS WITH EXTERIOR EXPOSURE TO BE STAINLESS STEEL OR HOT DIPPED GALVANIZED.
 - TESTING OF REINFORCING BARS USED IN SINGLE STORY BUILDINGS MAY BE WAIVED PROVIDED CERTIFIED MILL TEST REPORTS ARE PROVIDED FOR EACH SHIPMENT OF SUCH REINFORCEMENT (CBC 1916A.2).

11 GENERAL NOTES

FOR USE:
1) 20 & 30psf ROOF LIVE/SNOW LOAD w/ 50, 65, & 125psf FLOOR LL.
2) ALL ROOF OPTIONS.
3) ALL EXTERIOR FINISH OPTIONS.

CONFIDENTIAL MATERIAL—THESE DOCUMENTS ARE THE PROPERTY OF AND ARE NOT TO BE REPRODUCED OR DISTRIBUTED WITHOUT FULL KNOWLEDGE AND WRITTEN CONSENT FROM ENVIROPLEX, INC. © COPYRIGHT ENVIROPLEX, INC. (ALL DRAWINGS PREPARED BY ENVIROPLEX, INC.)

APPROVALS

CYS
STRUCTURAL ENGINEERS INC.
1760 Creekside Oaks Dr., Suite 280
Sacramento, CA 95833
(916) 926-2929 (916) 926-1650 Fax
www.cys-engineers.com

REGISTERED PROFESSIONAL ENGINEER
No. 52030
EXP. 9/2013
STRUCTURAL
STATE OF CALIFORNIA

THESE DRAWINGS ARE PRELIMINARY AND NOT FOR CONSTRUCTION UNLESS STAMPED & SIGNED BY THE ENGINEER OF RECORD.

ENVIROPLEX, INC.
4777 E. CARPENTER ROAD STOCKTON, CA 95215, (209) 486-8000

1) 12'x40' RELOCATABLE RESTROOM BUILDINGS FOR LA CANADA COLLEGE
SAN MATEO COMMUNITY COLLEGE DISTRICT

CONCRETE FOUNDATION FOOTING DETAILS & NOTES

REV / DATE:

JOB No.: 12-19
DRAWN BY: JM
DATE: 07-18-12

THIS MODULAR BLDG. HAS BEEN ENGINEERED BY A REGISTERED STRUCTURAL ENGINEER AND PREVIOUSLY REVIEWED & APPROVED BY THE DIVISION OF THE STATE ARCHITECT, FIRE & LIFE SAFETY AND ACCESS COMPLIANCE SECTION

S1C.1