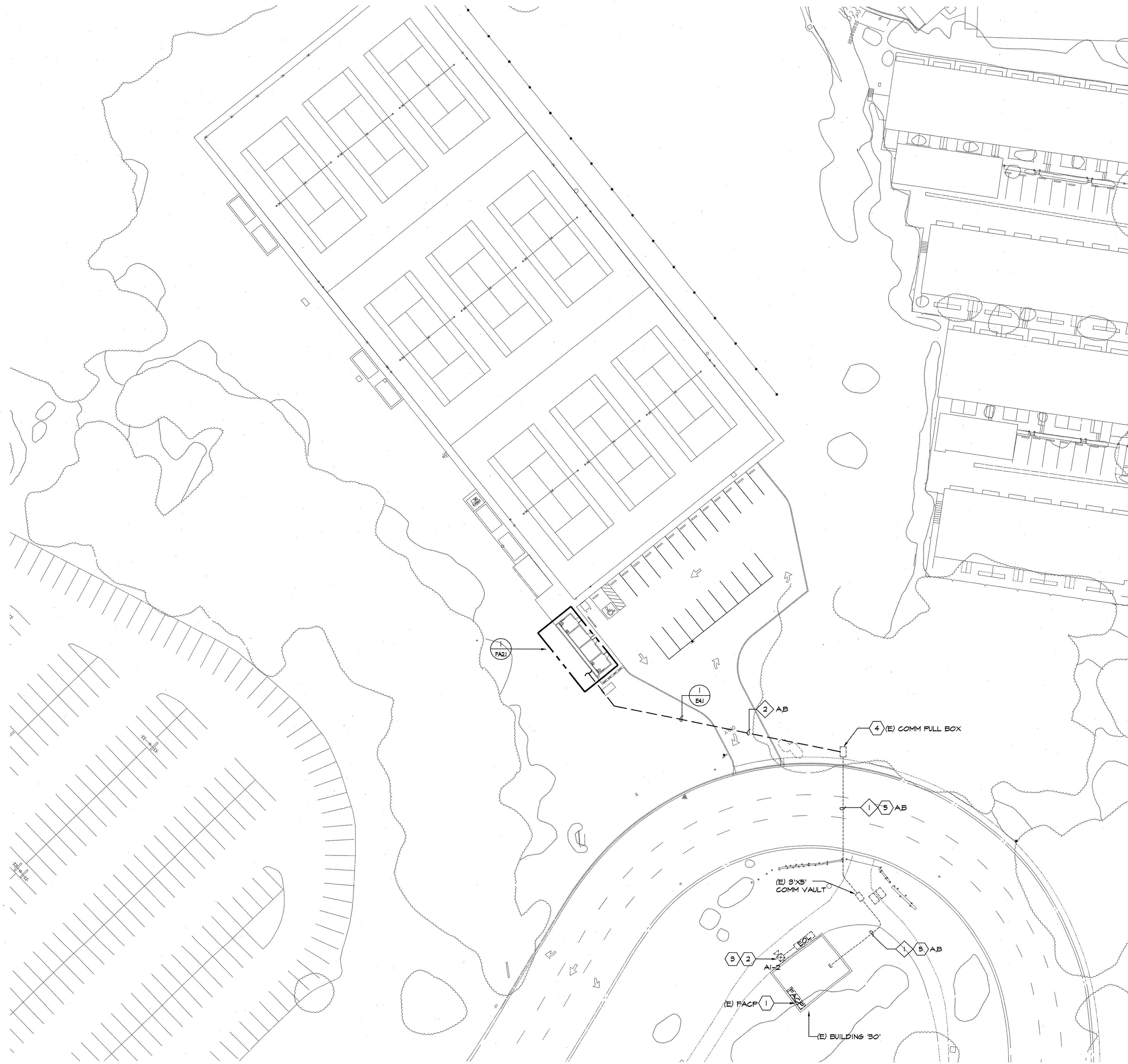


ALL IDEAS, DESIGNS, ARRANGEMENTS, AND PLANS INDICATED OR REPRESENTED BY THIS DRAWING ARE OWNED BY AND THE PROPERTY OF VERDE DESIGN, INC. AND WERE CREATED, EVALUATED, AND DEVELOPED FOR USE ON AND IN CONNECTION WITH THE SPECIFIED PROJECT. NONE OF SUCH IDEAS, DESIGNS, ARRANGEMENTS OR PLANS SHALL BE USED, REPRODUCED, OR PUBLISHED BY ANY METHOD, IN WHOLE OR IN PART, OR DISCLOSED TO ANY PERSON, FIRM, OR CORPORATION FOR ANY PURPOSE WHATSOEVER WITHOUT WRITTEN PERMISSION OF VERDE DESIGN, INC.



**1 FIRE ALARM SITE PLAN**  
 FA1.1 SCALE: 1" = 30'-0"

**GENERAL NOTES:**

1. ALL FIRE ALARM CABLING SHALL BE NEW.
2. SEE FIRE ALARM DRAWINGS FOR ADDITIONAL CONDUIT REQUIREMENTS.
3. SEE FLOOR PLAN AND FIRE ALARM RISER DIAGRAM FOR ADDITIONAL REQUIREMENTS.
4. COORDINATE TRENCH WORK WITH ELECTRICAL DRAWINGS.
5. FIRE ALARM CONDUIT SHALL BE PAINTED RED.

**SHEETS NOTES:**

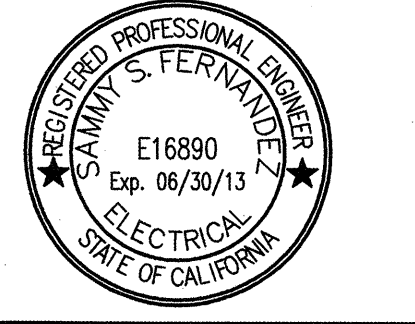
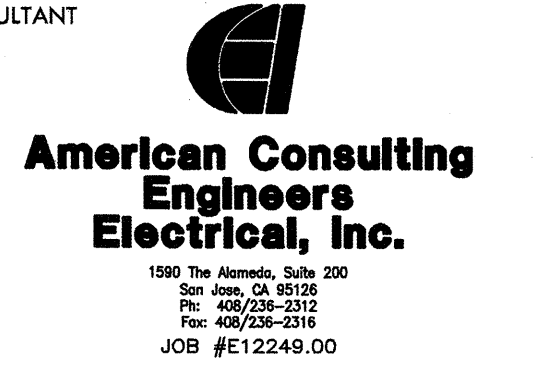
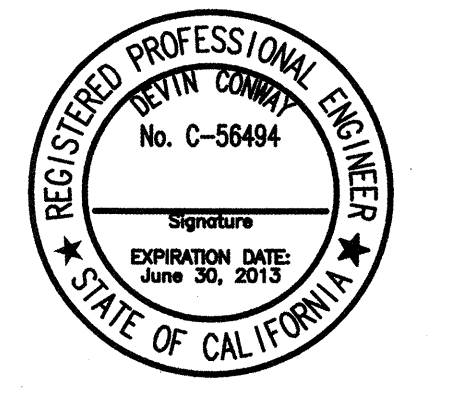
- 1 EXISTING SIEMENS 'MXL' FIRE ALARM CONTROL PANEL. FACP IS LOCATED IN EXISTING BUILDING 30.
- 2 CONTRACTOR SHALL LOCATE AND INTERCEPT EXISTING NOTIFICATION CIRCUIT. EXTEND AND CONNECT TO NEW NOTIFICATION DEVICE AND RECONNECT AS SHOWN ON FIRE ALARM FLOOR PLAN.
- 3 REMOVE AND RELOCATE EXISTING EOL TO NEW NOTIFICATION DEVICE IN THE NEW MODULAR PORTABLE. SEE FIRE ALARM FLOOR PLAN FOR EXACT LOCATION.
- 4 EXISTING COMMUNICATIONS PULL BOX. PROVIDE ALL LABOR AS REQUIRED TO STUB CONDUIT INTO THE SIDE OF THE PULL BOX. IF THE PULL BOX IS DAMAGED DURING PENETRATION CONTRACTOR SHALL BE RESPONSIBLE TO PROVIDE NEW.
- 5 COORDINATE CONDUIT ROUTING WITH ELECTRICAL DRAWINGS.

**CONDUIT SCHEDULE:**

- 1 (E) (3) 2" C - COMMUNICATIONS  
 (E) (1) 2" CO - SPARE (UTILIZE FOR THIS PROJECT).
- 2 (N) (1) 1" C - FIRE ALARM

**FA CABLE SCHEDULE:**

- A - (2) #12 FOR NOTIFICATION APPLIANCE CIRCUITS (NAC)  
 B - (1) #14 SHIELDED TWISTED PAIR FOR SIGNALING LINE CIRCUITS (SLC)



STAMP

CONSULTANT

SHEET TITLE

**FIRE ALARM SITE PLAN**

PROJECT NAME

**CANADA COLLEGE TENNIS FACILITY IMPROVEMENTS**

PROJECT ADDRESS

**4200 FARM HILL BLVD  
 REDWOOD CITY, CA 94061**

SUBMITTAL	DATE
90%	07/30/12
BID SUBMITTAL	08/21/12
ADDENDUM ONE	08/31/12
CONFORM SET	09/24/12

NO.	REVISIONS	DATE

DRAWN BY **MM** CHECKED BY **SF**

DATE ISSUED **08/21/12** SCALE **AS NOTED**

PROJ. NO. **1207300-1281**

SHEET NO. **FA1.1** 36 OF 39 SHEETS

