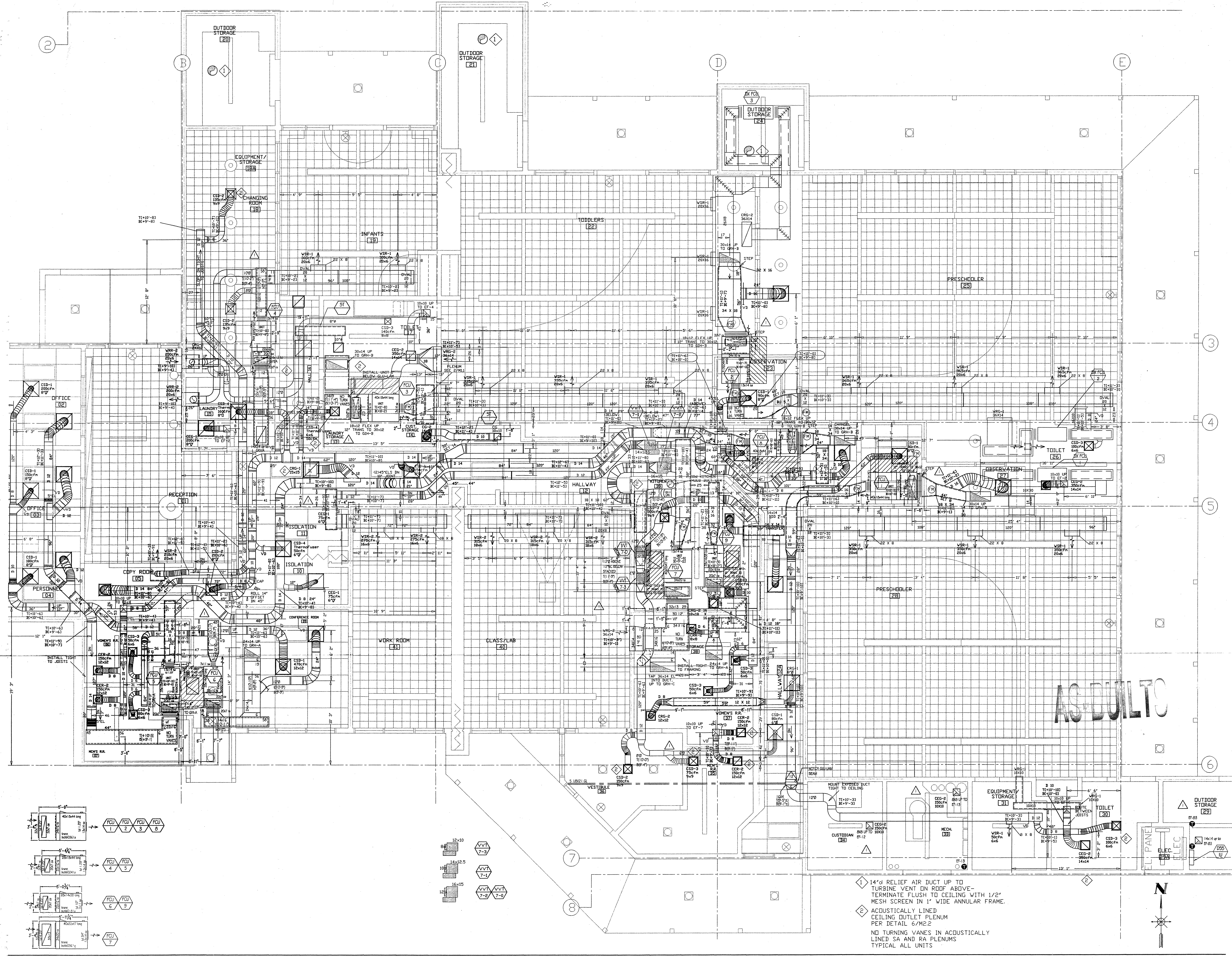


Child Development Center
 Cañada College

4200 Farm Hill Blvd
 Redwood City, CA 94061



ISSUES AND REVISIONS

Engineers Comments, RFI answers & shear wall penetration changes.	08.29.02
Record Drawing	09.03.03

Date: 08.05.03
 Scale: 1/4"=1'-0"
 Modified By: David V

Cañada College

First Floor Mechanical Plan

Sheet Number: M1.1
 Job Number: 02026

- 1 14"ø RELIEF AIR DUCT UP TO TURBINE VENT ON ROOF ABOVE - TERMINATE FLUSH TO CEILING WITH 1/2" MESH SCREEN IN 1" WIDE ANNULAR FRAME.
- 2 ACUSTICALLY LINED CEILING OUTLET PLENUM PER DETAIL 6/M2.2
 NO TURNING VANES IN ACUSTICALLY LINED SA AND RA PLENUMS
 TYPICAL ALL UNITS

