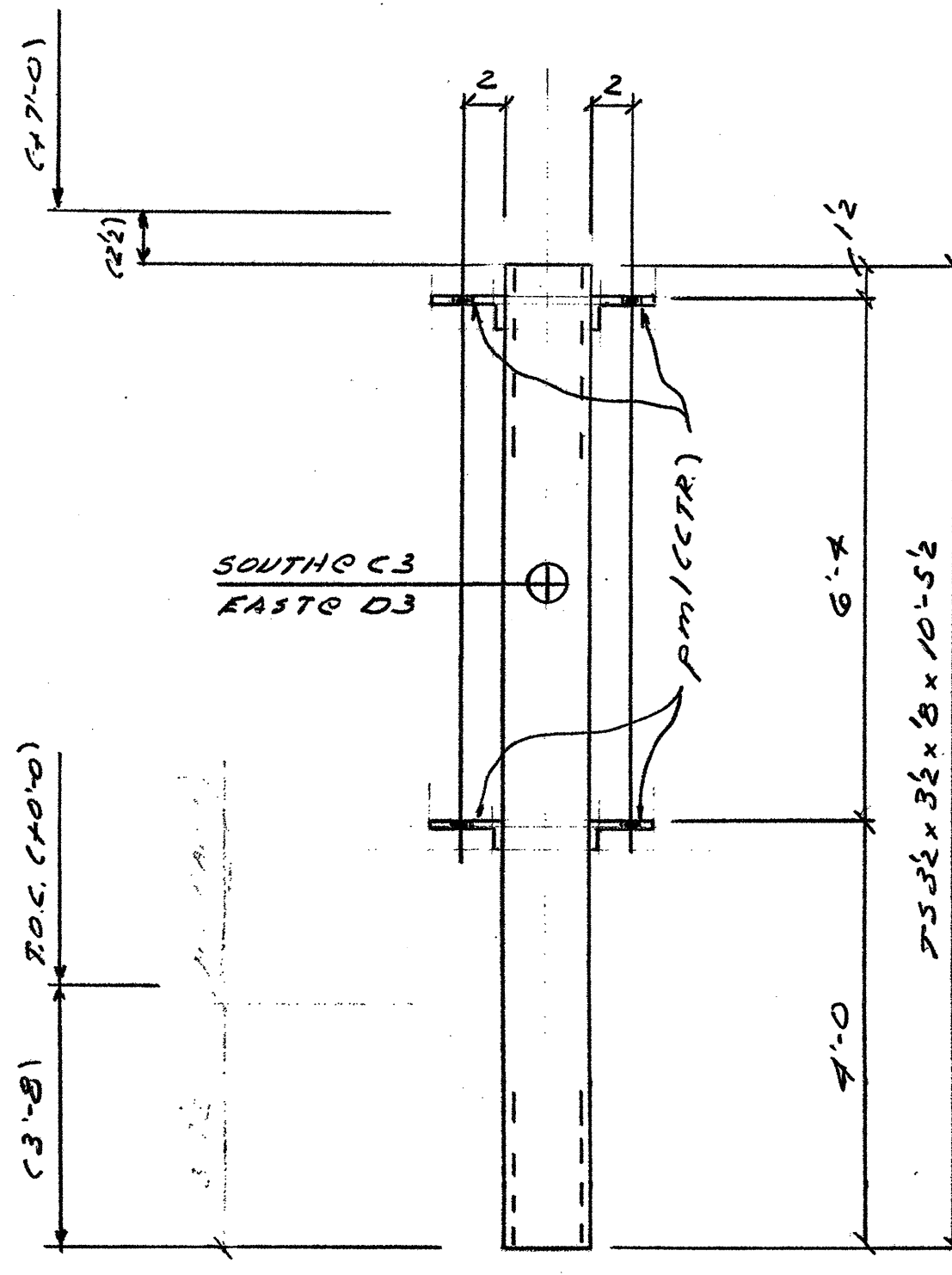
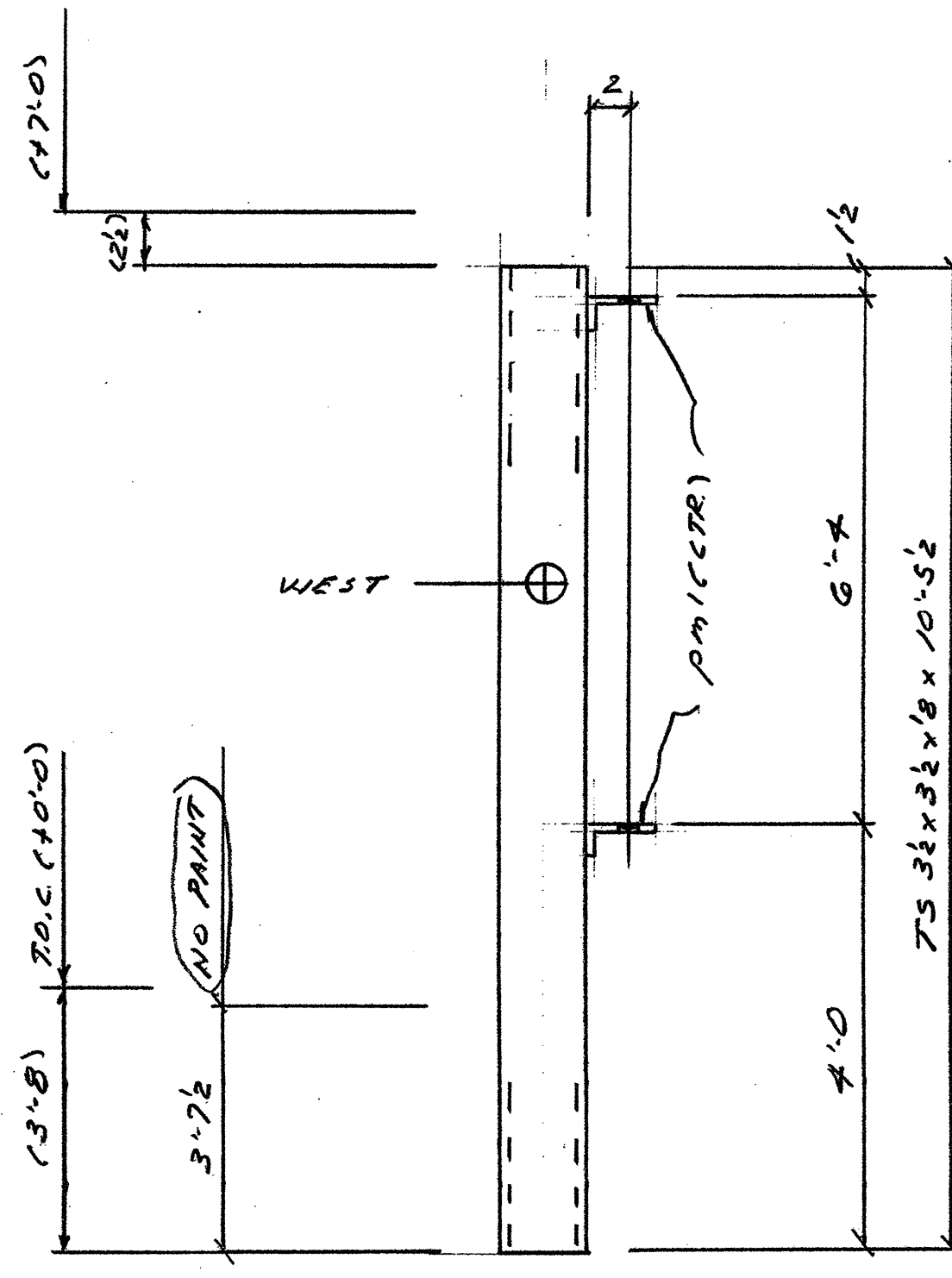


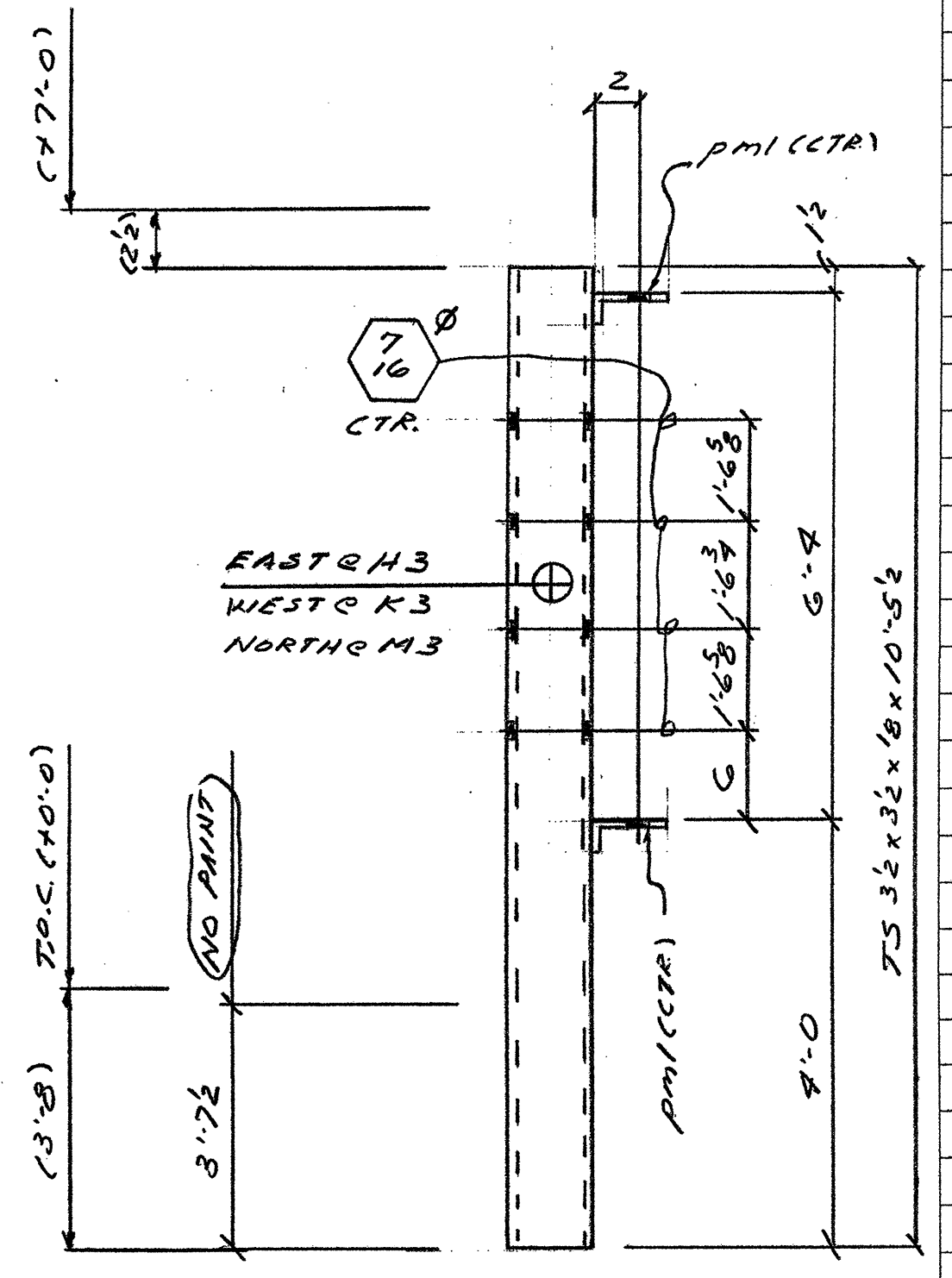
ONE-POST-MK A3
ONE-POST-MK B3
(18) 1/2" A307 x 0-2 1/2" W/C.W.



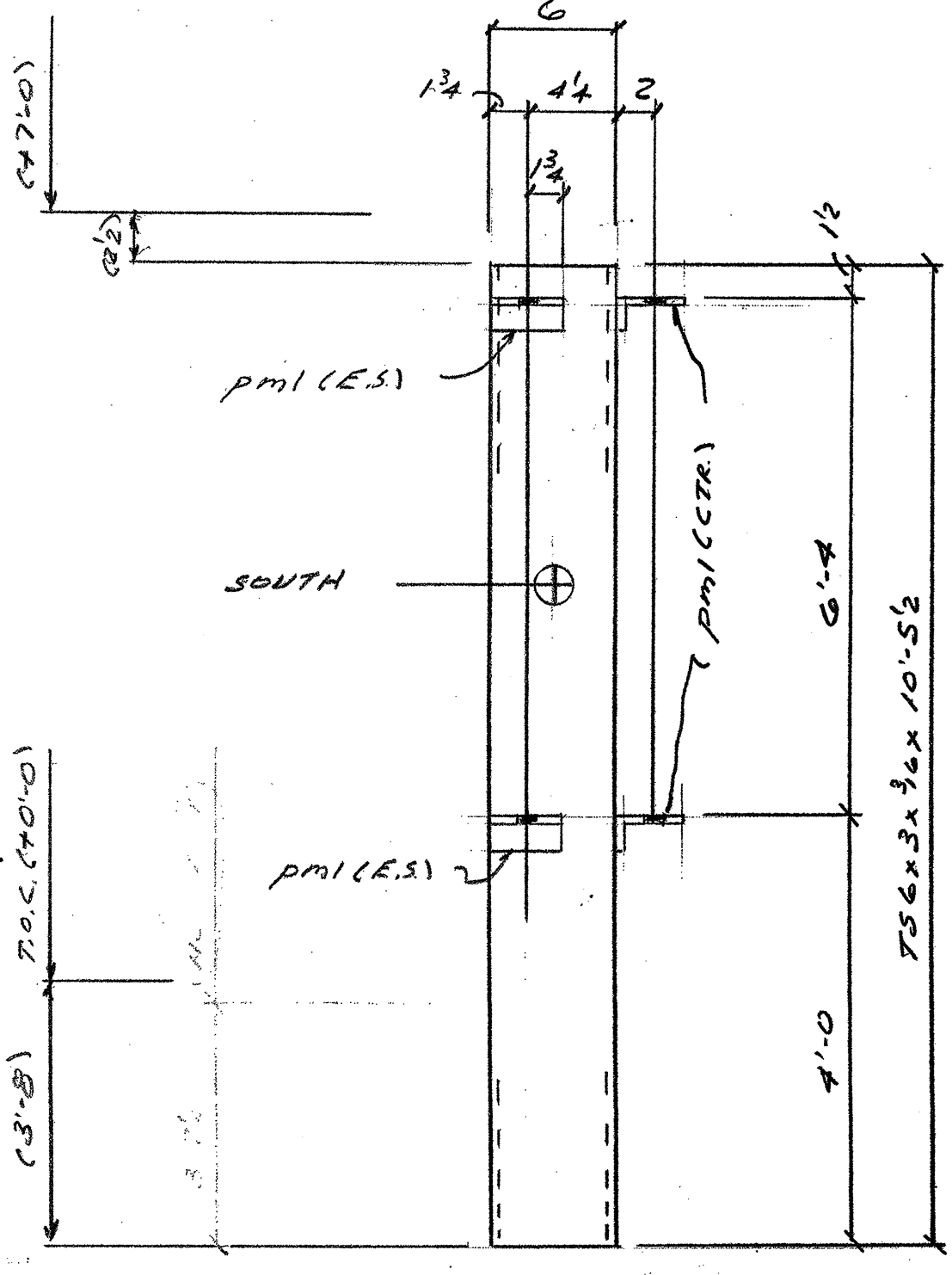
3-POST-MK C3
6-POST-MK D3
(36) 1/2" A307 x 0-2 1/2" W/C.W.



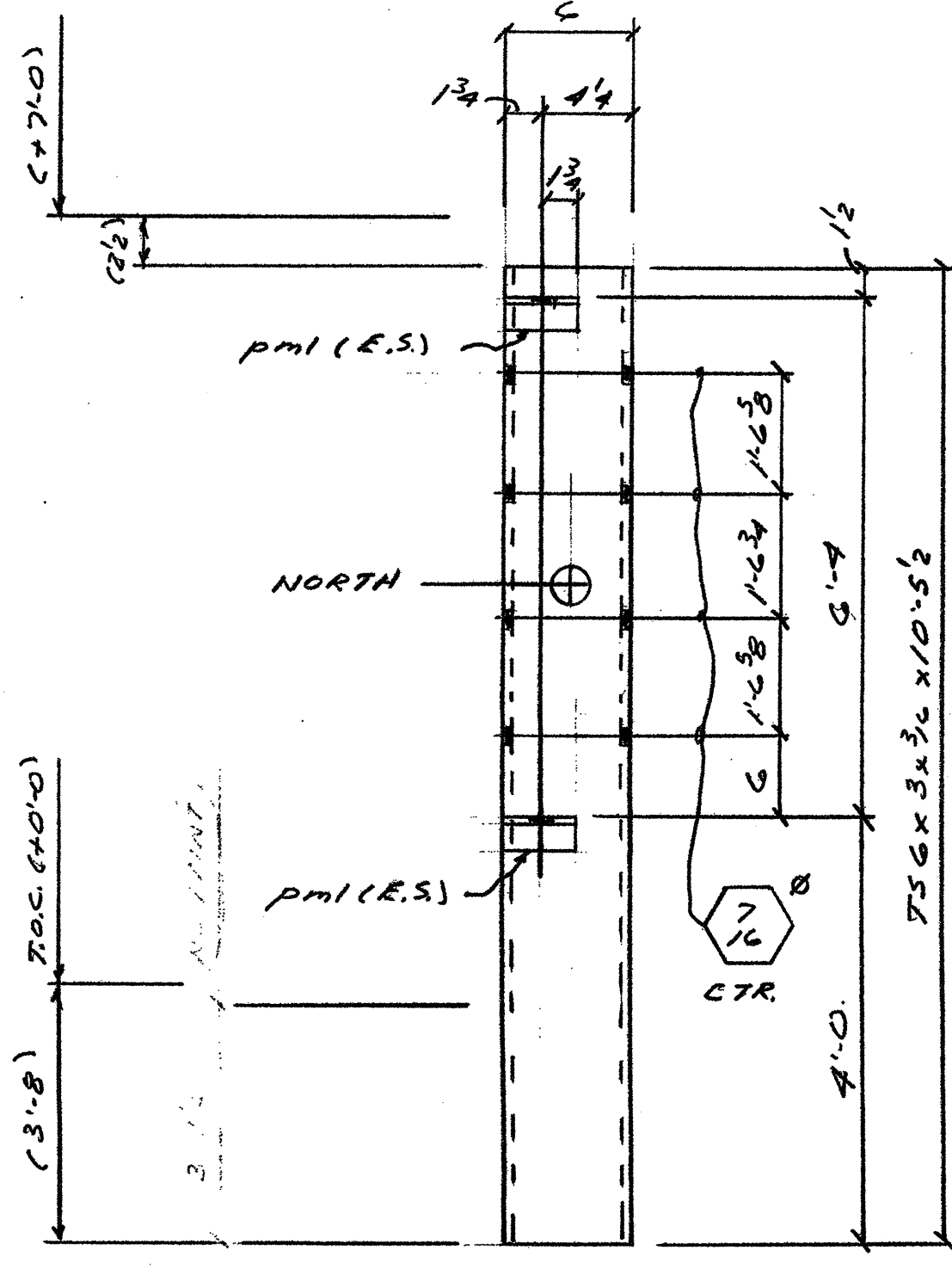
2-POST-MK F3
(4) 1/2" A307 x 0-2 1/2" W/C.W.



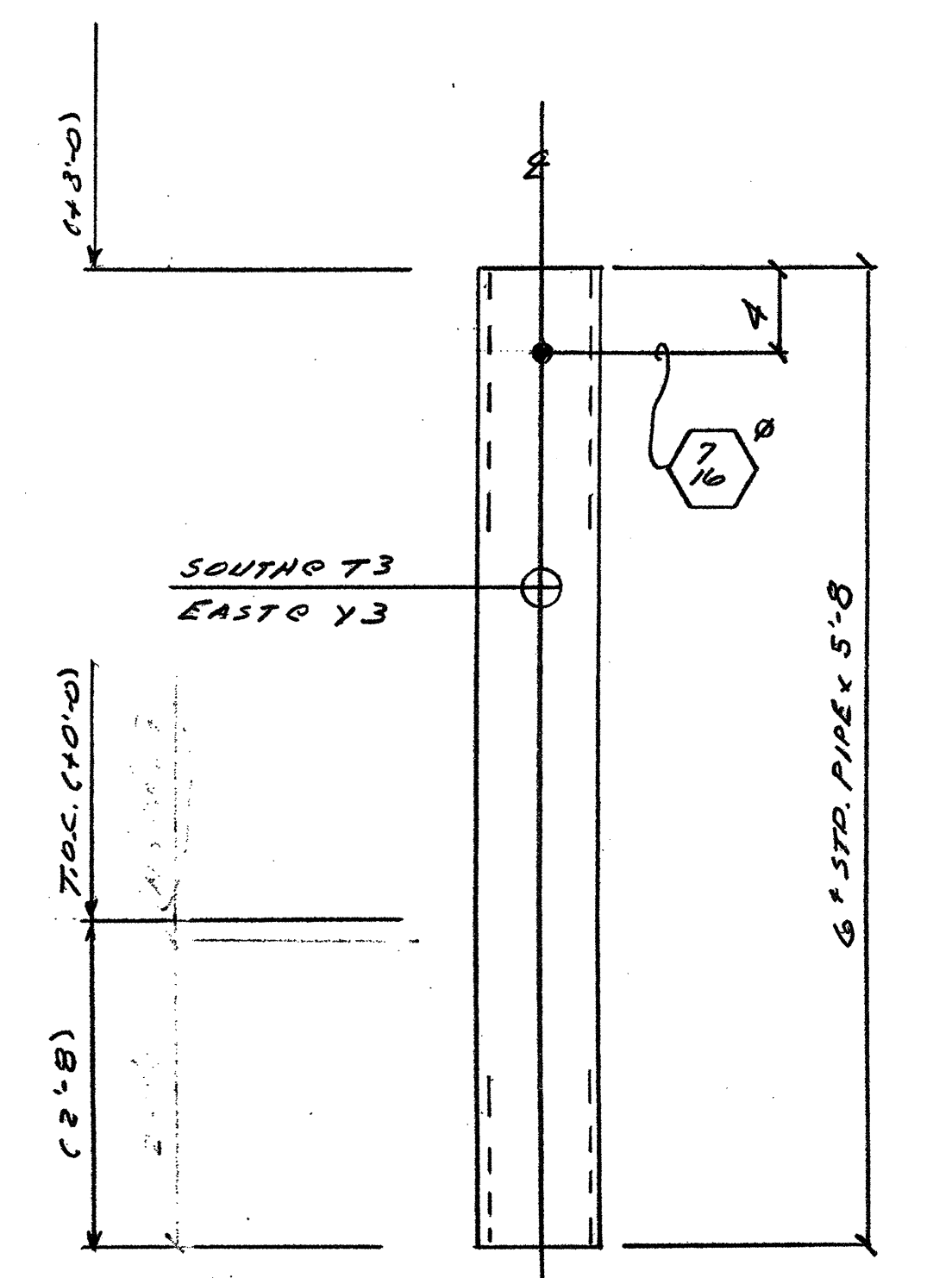
5-POST-MK H3
5-POST-MK K3
ONE-POST-MK M3
(22) 1/2" A307 x 0-2 1/2" W/C.W.
(44) 3/8" A307 x 0-5 1/2" W/C.W.



ONE-POST-MK P3
(6) 1/2" A307 x 0-2 1/2" W/C.W.



ONE-POST-MK S3
(4) 1/2" A307 x 0-2 1/2" W/C.W.
(4) 3/8" A307 x 0-8" W/C.W.



7-POST-MK T3
5-POST-MK Y3

BILL OF MATERIAL						
SHIP MARK	PC. MARK	QUAN.	DESCRIPTION	LENGTH	REMARKS	AISC WTS.
				FT.		
				IN.		
A3	ONE		75 3/2 x 3/2 x 1/8	10	5 1/2	
B3	ONE		do	10	5 1/2	
	PM1	8	87.12 6 x 3 1/2	0	7 1/2	
C3		3	75 3/2 x 3/2 x 1/8	10	5 1/2	
D3		6	do	10	5 1/2	
	PM1	36	87.12			
F3		2	75 3/2 x 3/2 x 1/8	10	5 1/2	
	PM1	4	87.12			
H3		5	75 3/2 x 3/2 x 1/8	10	5 1/2	
K3		5	do	10	5 1/2	
M3	ONE		do	10	5 1/2	
	PM1	22	87.12			
P3	ONE		75 3/2 x 3/2 x 1/8	10	5 1/2	
	PM1	6	87.12			
S3	ONE		75 3/2 x 3/2 x 1/8	10	5 1/2	
	PM1	4	87.12			
T3		7	6" STEEL PIPE	5	8	
Y3		5	do	5	8	
TUBING - ASTM A500, GRADE B						
PIPE - ASTM A53, TYPE EORS, GRADE B						
STEEL PLATE - ASTM A36						
FIELD BOLTS						
		80	1/2" A307	0	2 1/2	
		44	3/8" A307	0	5 1/2	
		4	do	0	8	
		80	1/2" C.W.			
		48	3/8" C.W.			
TOTAL WEIGHT						

OPEN HOLES	9/16"	UNLESS OTHERWISE NOTED	
MIN. EDGE DISTANCE		UNLESS OTHERWISE NOTED	
SHOP PAINT	HOT DIP GALVANIZE		
REV. NO.	DESCRIPTION	DATE	BY
A	FOR APPROVAL	3-7-02	

AS-BUILTS

NORTH WIND CONTRACTORS
415 E. 10TH STREET
PITTSBURG, CA 94565

REFERENCE:	DESIGN: SW2.1a & SW2.2	
ERECTION:	E1	
WELD INSPECTION		
REQUIRED	AGENCY	PHONE NO.
YES	NO	
X		DCI 967-6982
SCALE:	DRAWN BY: JWS	DATE: 3/3/02
APPROVED BY:	CHECKED BY: JWS	DATE: 3/3/02
	DATE:	
JOB NO:	02-15	
DRAWING NO:	D3	