

MARK	ITEM	MARK	ITEM
A	36" GRAB BAR	H	SANITARY NAPKIN DISPENSER
B	42" GRAB BAR	J	SANITARY NAPKIN DISPOSAL
C	COAT HOOK	K	MIRROR (STAINLESS STEEL)
D	SEMI-RECESSED ROLL TOILET PAPER DISPENSER	L	WASTE RECEPTACLE
E	LIQUID SOAP DISPENSER	M	DIAPER CHANGE STATION
F	PAPER TOWEL DISPENSER		
G	TOILET SEAT COVER DISPENSER		

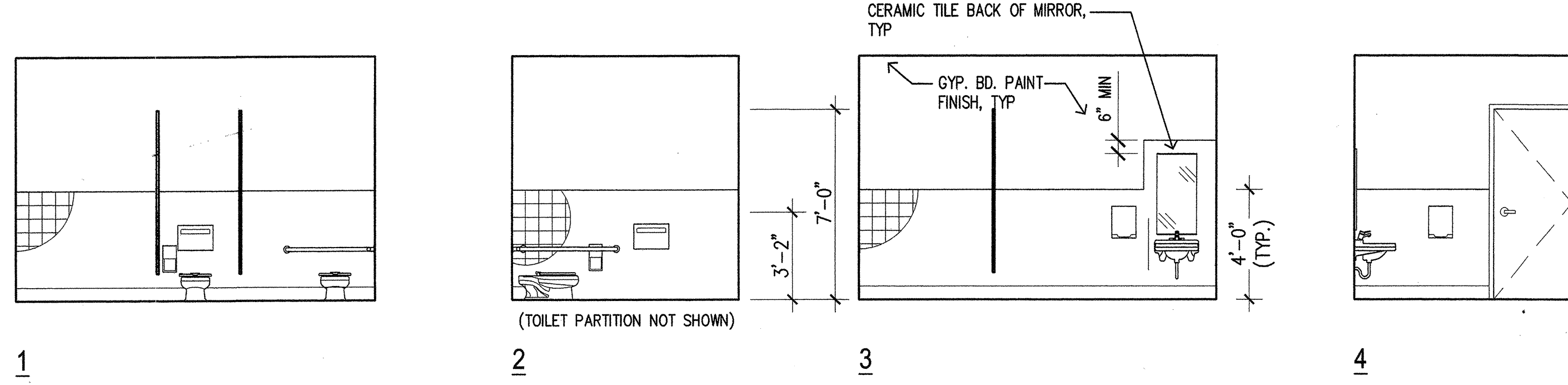
NOTE:
 1. FOR TYP. FIXTURE MOUNTING HEIGHTS, SEE DTL. 20A/A4.2
 2. TOILET TISSUE DISPENSERS TO BE CONT. FLOW TYPE

4N TOILET ACCESSORIES SCHED. NTS

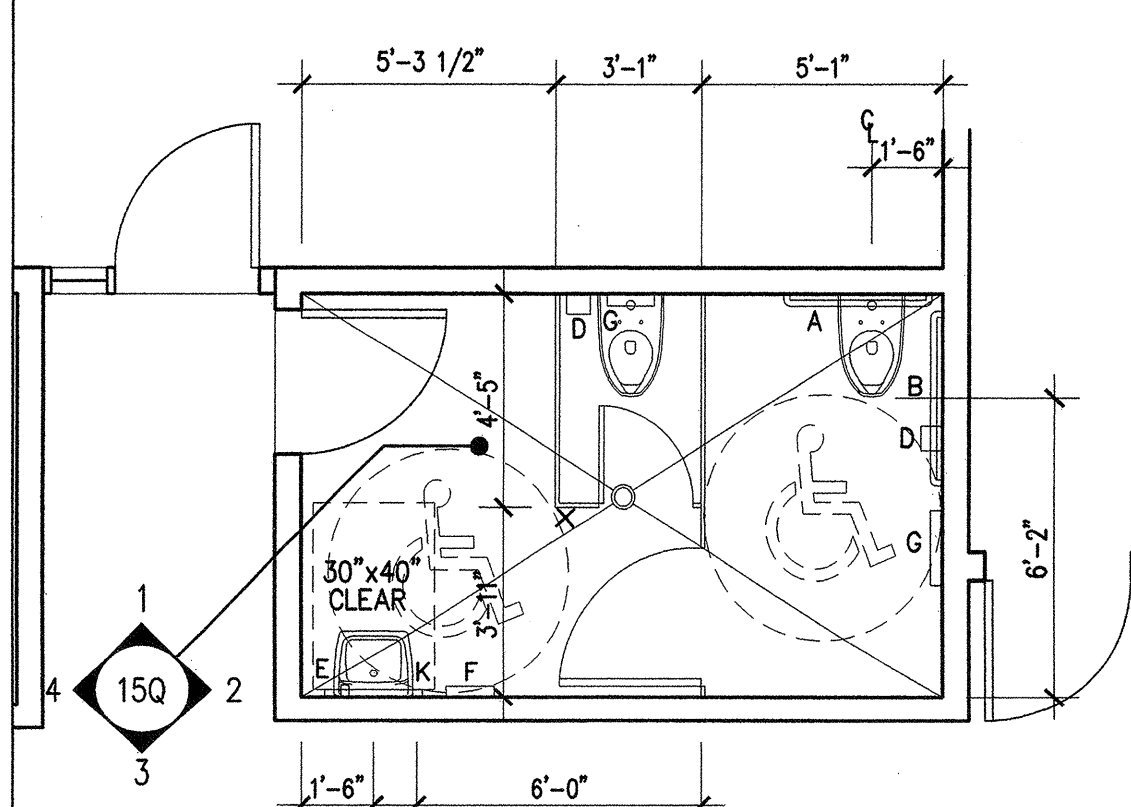
SHEETS NOTES:

- 1 3-DRAWER WARMER UNIT (HATCO) MODEL HDW-3 *
- 2 ICE MAKER (MANITOWOC) ICE MAKER # 53889 * ICE BIN # 16442 * FILTRATION # 12171 *
- 3 REFRIGERATOR & FREEZER (ARTIC AIR) REFRIGERATOR # 70410 * FREEZER # 37752 *
- 4 24" x 60" S.S. TABLE w/ SHELF UNDER (HUBERT) MODEL # 32192 *
- 5 TABLE DRAWERS (HUBERT) S.S. PAN # 99173 *
- 6 STOCK CARTS (HUBERT) MODEL # 92500 *
- 7 36" S.S. WALL SHELF (METRO) MODEL # 95934 *
- 8 S.S. HAND WASHING SINK HPCP ACCESSABLE
- 9 S.S. SINK
- 10 S.S. SINK
- 11 S.S. WAINSCOT 5'-0" HIGH FROM DOOR TO DOOR 5'-0" HIGH
- 12 SEAMLESS SHEET VINYL FLOOR COVERING
- 13 EXHAUST FAN MOUNT 18" FROM 1 AND HOOD PER ORIGINAL CONTRACT DRAWINGS
- 14 4-18" x 36" S.S. WIRE SHELF UNIT (METRO) MODEL # 97236 *
- 15 S.S. SOLID SHELF

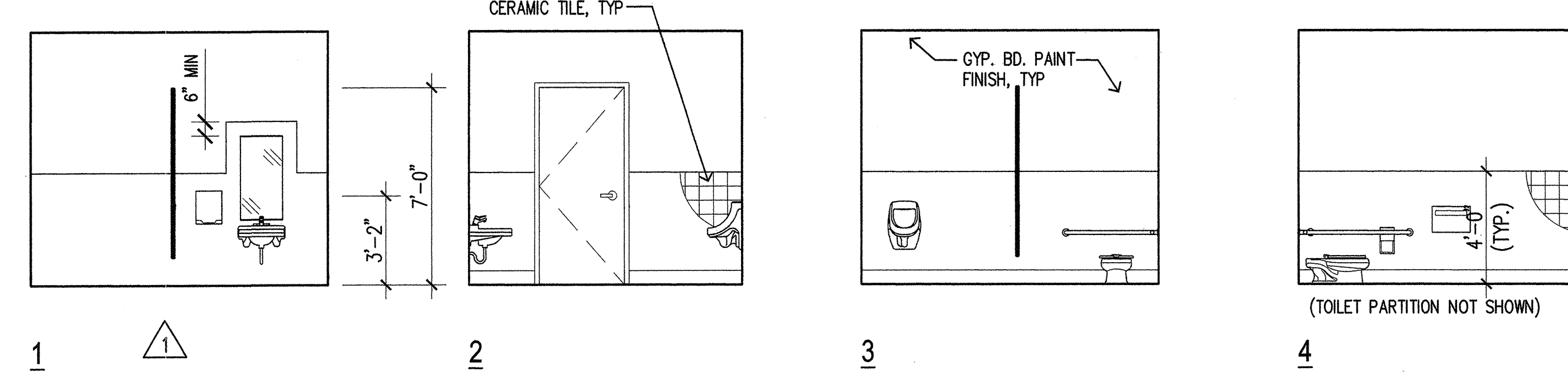
* OWNER SUPPLIED



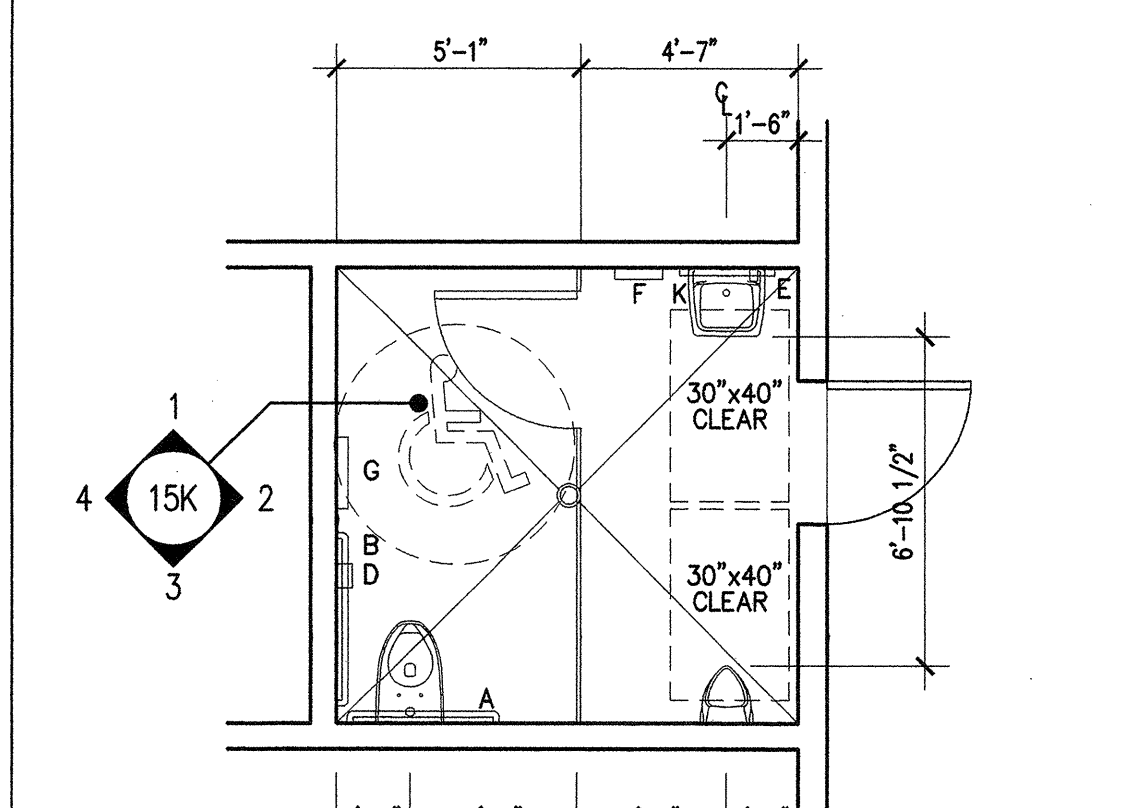
15Q RESTROOM ELEVATIONS
 @ CHILDREN'S RESTROOMS 1/4" = 1'-0"



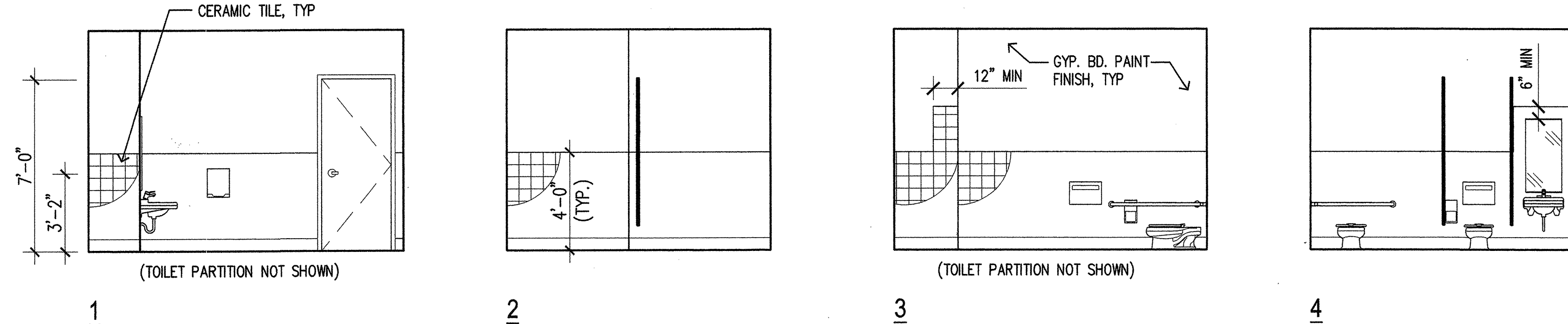
4Q ENLARGED RESTROOM PLAN
 @ WOMEN'S TOILET 1/4" = 1'-0"



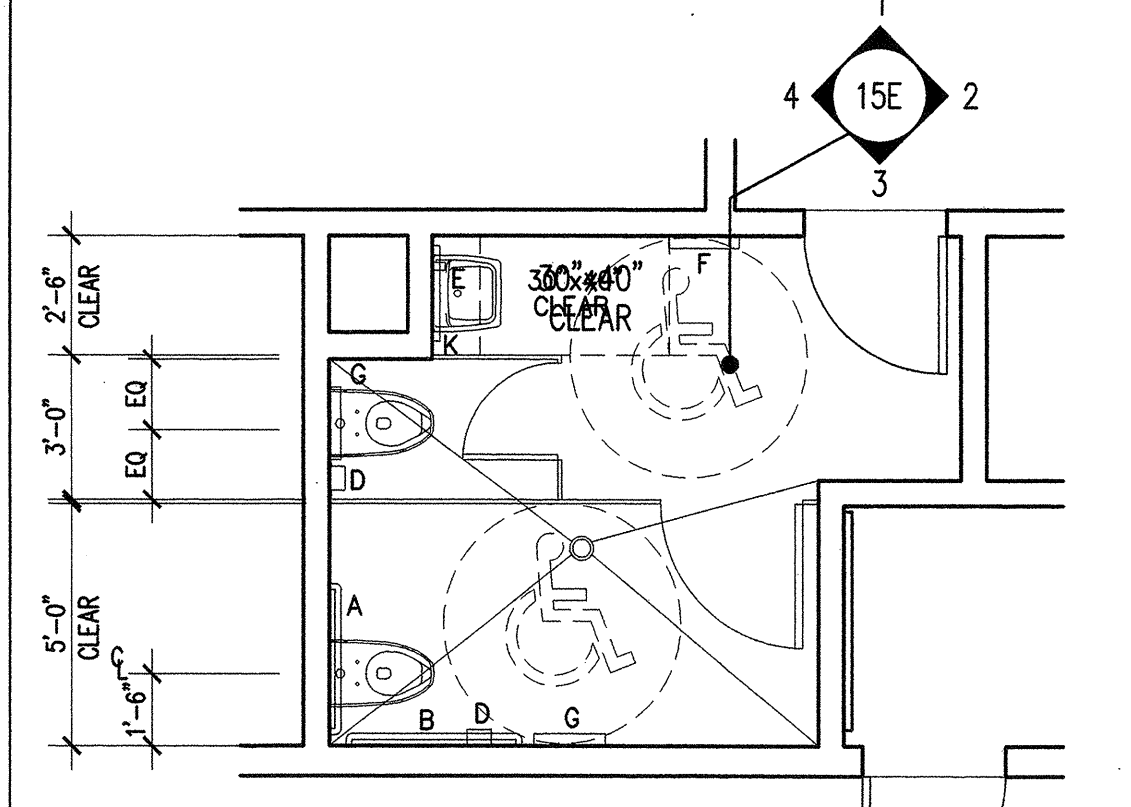
15K RESTROOM ELEVATIONS
 @ CHILDREN'S RESTROOMS 1/4" = 1'-0"



4K ENLARGED RESTROOM PLAN
 @ WOMEN'S TOILET 1/4" = 1'-0"

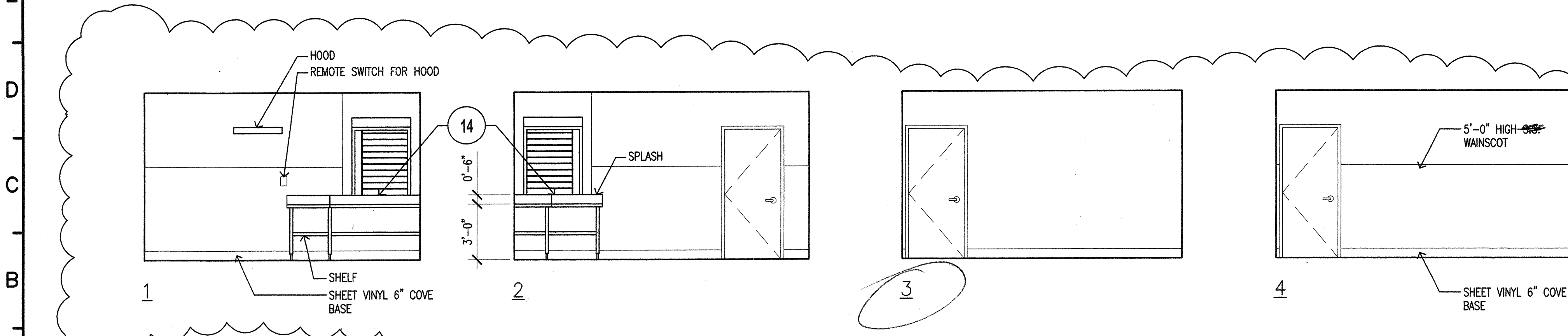


15E RESTROOM ELEVATIONS
 @ CHILDREN'S RESTROOMS 1/4" = 1'-0"



4E ENLARGED RESTROOM PLAN
 @ WOMEN'S TOILET 1/4" = 1'-0"

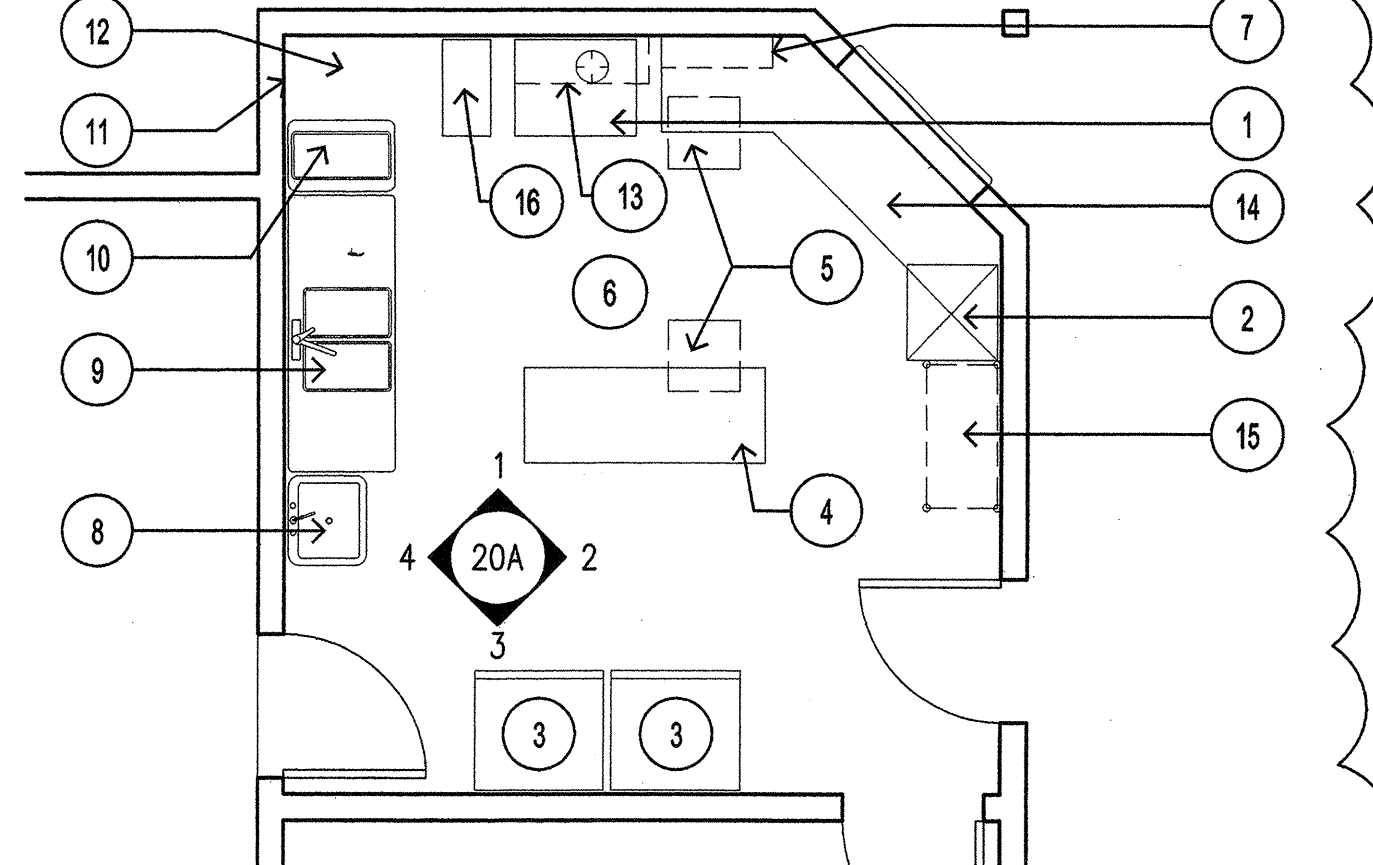
NOTE:
 1. FOR (TYP.) URINAL, TOILET, GRAB BAR, SIGNAGE, LAVATORY AND TOILET ACCESSORY DETAILS AND MOUNTING HEIGHTS IN CHILDREN'S RESTROOMS, SEE SHEET A4.2.



20A KITCHEN ELEVATIONS 1/4" = 1'-0"

NOTE: SINKS AND EQUIPMENT NOT SHOWN

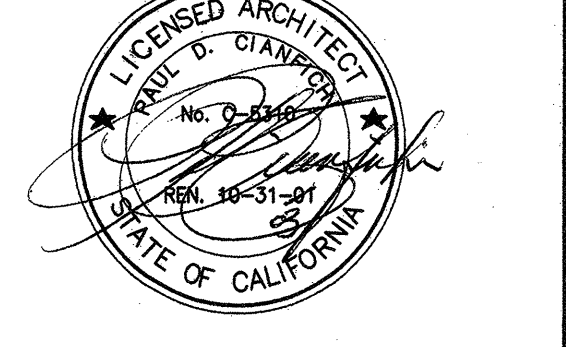
NOTE: APPROVAL FROM LOCAL HEALTH DEPT. REQ'D FOR FOOD HANDLING FACILITIES



4A ENLARGED KITCHEN PLAN 1/4" = 1'-0"

NO.	DATE	REASON	BY
1	10/15/01	ADDENDUM#1	
2	10/26/01	ADDENDUM#2	
3	02/28/03	ADDENDUM#2	
4	3/17/03	CR #19	
5	5/20/03	CR #20	

ISSUE FOR PROGRESS REVIEW 01/15/01
 ISSUE FOR PLAN CHECK 01/25/01
 ISSUE FOR FINAL REVIEW 05/09/01
 ISSUE FOR BID
 ISSUE FOR CONSTRUCTION



CONSULTANT:
 ARCHITECT:
 CONSULTANT:

ARCHITECT:
CIANFICHI
 ARCHITECTURE + PLANNING
 30 ANNE COURT
 WALNUT CREEK, CA 94598
 TEL: (925) 256-8636
 FAX: (925) 256-8632

PROJECT:
**CHILD DEVELOPMENT CENTER
 CAÑADA COLLEGE**

4200 FARM HILL BLVD.
 REDWOOD CITY, CA 94061
 SAN MATEO COUNTY COMMUNITY COLLEGE DISTRICT

STAMP:
 APPROVED
 DIV. OF THE STATE ARCHITECT
 AO: *AG* F/L: *FD* SS: *RC*
 APPL. NO. *103527* DATE *6/16/03*

APPL. NUMBER:
 KEY PLAN:
AS-BUILTS

SHEET TITLE:
**AND ELEVATIONS
 ENLARGED PLANS**

DRAWN BY: PROJECT NO.:
 GL 304.99
 CHECKED BY: DATE:
 BA 03/17/03
 APPL. NO.: SHEET:
 DATA NO.: **A4.0ar**
 NO. OF: