

REVISIONS	DATE

DRAWING STATUS	DATE
<input type="radio"/> DSA PLAN CHECK	
<input type="radio"/> DSA BACK CHECK	
<input type="radio"/> BIDDING (BID #86593)	
<input type="radio"/> CONSTRUCTION	

FILE NO. 41-C1

IDENTIFICATION STAMP
DIV. OF THE STATE ARCHITECT

01-110074

AC [initials] FLS [initials] SS [initials]

DATE MAR 19 2009

**BUILDINGS 5 & 6
RENOVATIONS**

San Mateo County Community
College District

DSA BACK-CHECK

CAÑADA COLLEGE
4200 Farm Hill Boulevard
Redwood City, CA 94061

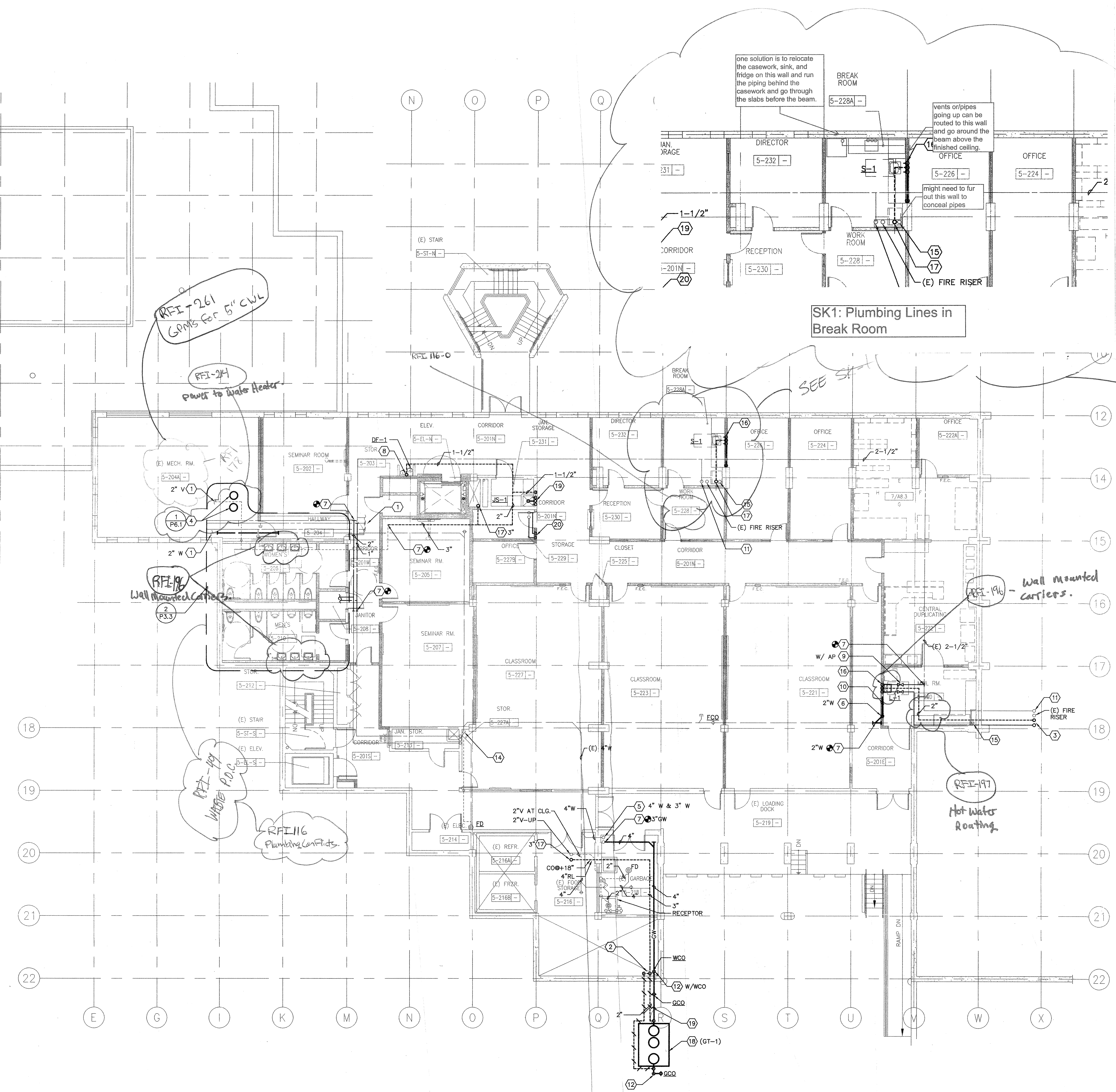
PLUMBING PLAN
SECOND FLOOR

Date 01/22/09
Scale AS NOTED
Project Number 07013

Drawing Number
P2.2

SHEET KEYNOTES

- 1 FOR CONTINUATION, SEE DRAWING PD1.2.
- 2 (2)-2" V UP FROM BELOW.
- 3 1/2" HW DN FROM ABOVE & 2" V UP. *RFI-197*
- 4 PROVIDE (N) WH-1.
- 5 SEE P.3.2 FOR CONTINUATION.
- 6 PIPE(S) DOWN THRU FLOOR.
- 7 POINT OF CONNECTION, (N) WORK TO (E) WORK. FIELD VERIFY EXACT SIZE AND LOCATION OF (E) WORK PRIOR INSTALLING (N) WORK.
- 8 2" W DN & 1-1/2" V UP.
- 9 LINE SIZE SHUT-OFF VALVE.
- 10 INSTALL PIPE WITH A MINIMUM SLOPE OF 2%.
- 11 (E) 2-1/2" CW RISER.
- 12 4" GW DN.
- 13 PIPING @ CEILING SPACE INSTALL AS HIGH AS POSSIBLE.
- 14 (E) 5" W STACK.
- 15 (E) 4" W STACK.
- 16 1/2" CW, 1/2" HW, 2" W DN/WCO & 1-1/2" V UP.
- 17 (N) V STACK.
- 18 PROVIDE 1000 GALS GREASE INTERCEPTOR (GI-1).
- 19 COORDINATE W/ CIVIL ENG. DWGS. FOR INV. ELEV. OF 4" GW PIPING.
- 20 1/2" HWR & 1-1/2" HW DN.



1 PLUMBING PLAN - SECOND FLOOR

0 4' 8' 16'

SCALE: 1/8"=1'-0"