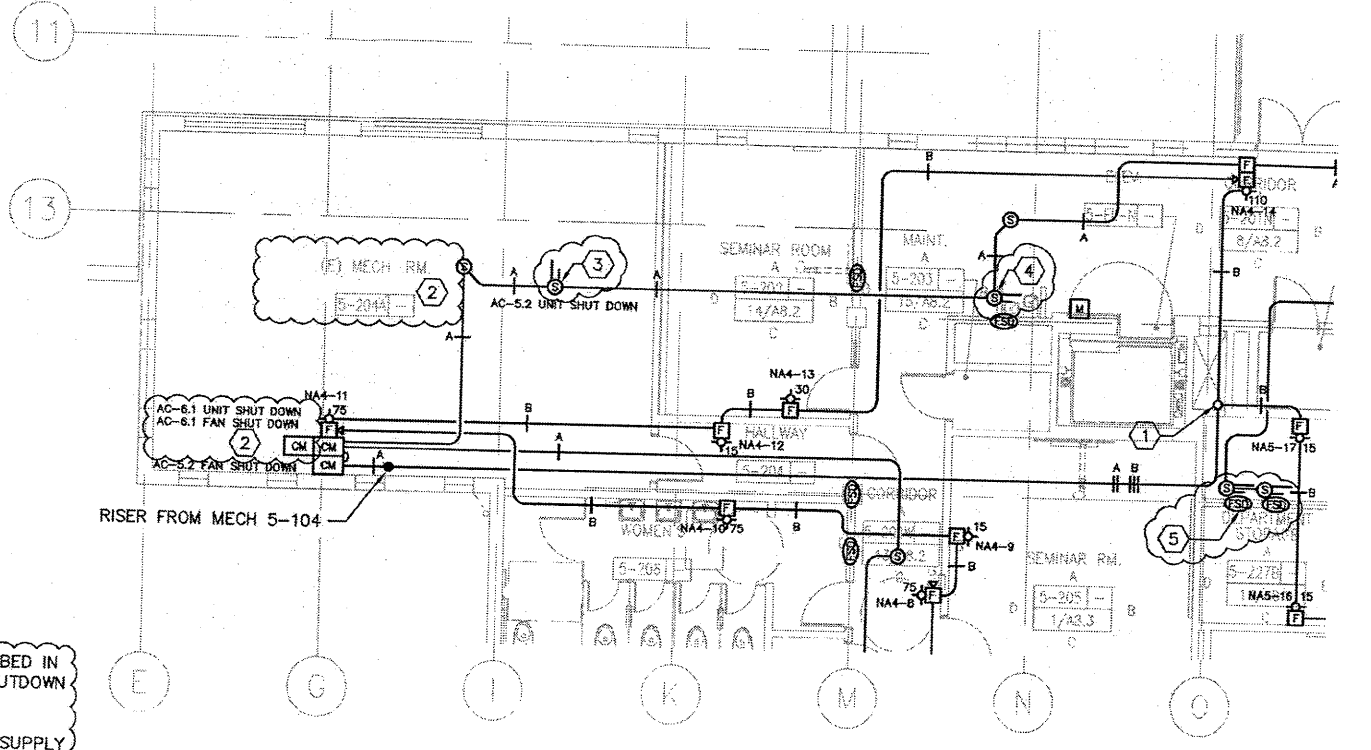


RFP-56

SHEET KEYNOTES

- ② AC-15. RELOCATE DUCT-MOUNTED SMOKE DETECTOR AS DESCRIBED IN ITEM ② FROM THE ADDRESSABLE CONTROL RELAY FOR UNIT SHUTDOWN DIGITAL INPUT TO 6A5.
- ③ AC-5-2. INSTALL THE DUCT-MOUNTED SMOKE DETECTOR IN THE SUPPLY DUCT BETWEEN THE UNIT OUTLET AND THE DUCT ELBOW.
- ④ FSD AT GRID LINE N/A. INSTALL THE DUCT-MOUNTED SMOKE DETECTOR ON THE ROUND DUCT SECTION BETWEEN THE DAMPER AND THE DUCT ELBOW AND WITHIN 3' OF THE DAMPER.
- ⑤ FSD (2) AT GRID LINE O/75. INSTALL THE DUCT-MOUNTED SMOKE DETECTORS ON EITHER SIDE OF THE WALL IN THE DUCT SECTIONS PENETRATING THE WALL. BE WITHIN STORAGE 5-222 AND STORAGE 5-227B, AND WITHIN 3' OF EACH DAMPER.



BCA The BCA ARCHITECTURE INCORPORATED 2200 FARM HILL BOULEVARD SCINDOZ CITY, CA 95051 TEL: 925-434-0000 FAX: 925-434-0001	PROJECT: FIRE ALARM PLAN - SECOND FLOOR CANADA COLLEGE - BUILDINGS 5 & 6 RENOVATIONS 4200 FARM HILL BOULEVARD SCINDOZ CITY, CA 95051 FILE NO. 43-01 APPL. 01-110074	 INTERFACE, INC. 2200 FARM HILL BOULEVARD SCINDOZ CITY, CA 95051 TEL: 925-434-0000 FAX: 925-434-0001 Date Signed: 02/26/03	PROJECT NO.: 41-C1 APPL. NO.: 01-110074 DATE: 02/26/03 PROJECT NO.: FASK-03
--	---	---	--