

PROJECT 2007-0731  
CONTACT Valeria Torres

**INTERFACE**  
ENGINEERING

717 Market Street  
Suite 500  
San Francisco, CA 94103  
TEL 415.498.7240  
FAX 415.498.7289  
www.interfaceengineering.com

ARCHITECT

REGISTERED ARCHITECT  
No. 91955  
Exp. 09/30/09  
STATE OF CALIFORNIA

ENGINEER

REGISTERED PROFESSIONAL ENGINEER  
No. E16806  
Exp. 08-22-09  
STATE OF CALIFORNIA

1. This sheet is part of a set and is not to be used alone.  
2. This sheet is not to be used for construction unless the architect's stamp and signature appear on the drawings and the status box indicates drawings have been released for construction.  
3. These plans and specifications are instruments of service, are owned by the architect and are for use on this project only. Reproduction and/or distribution without the prior written consent of the architect is forbidden.  
4. Copyright Bunton Clifford Associates, 2007

REVISIONS	DATE
ADDENDUM NO. 1	08/18/09
ADDENDUM NO. 2	11/06/09

REVISION HISTORY	DATE
IS&A PLAN CHECK	08/28/09
IS&A BACK CHECK	01/22/09
BIDDING (BID #88850)	09/19/09
CONSTRUCTION	

FILE NO. 41-C1

IDENTIFICATION STAMP  
DIV. OF THE STATE ARCHITECT

01-110074

DATE

## BUILDINGS 5 & 6 RENOVATIONS

San Mateo County Community College District

### BID ADDENDA

APPROVED  
V. OF THE STATE ARCHITECT: [Signature]  
AC [Signature] F.A.S. G.B. SS. [Signature]  
APPL. NO. 110074 DATE 2/24/10

**CAÑADA COLLEGE**  
4200 Farm Hill Boulevard  
Redwood City, CA 94061

THIRD FLOOR PLAN  
- POWER

Date 08/29/08  
Scale AS NOTED  
Project Number 07013

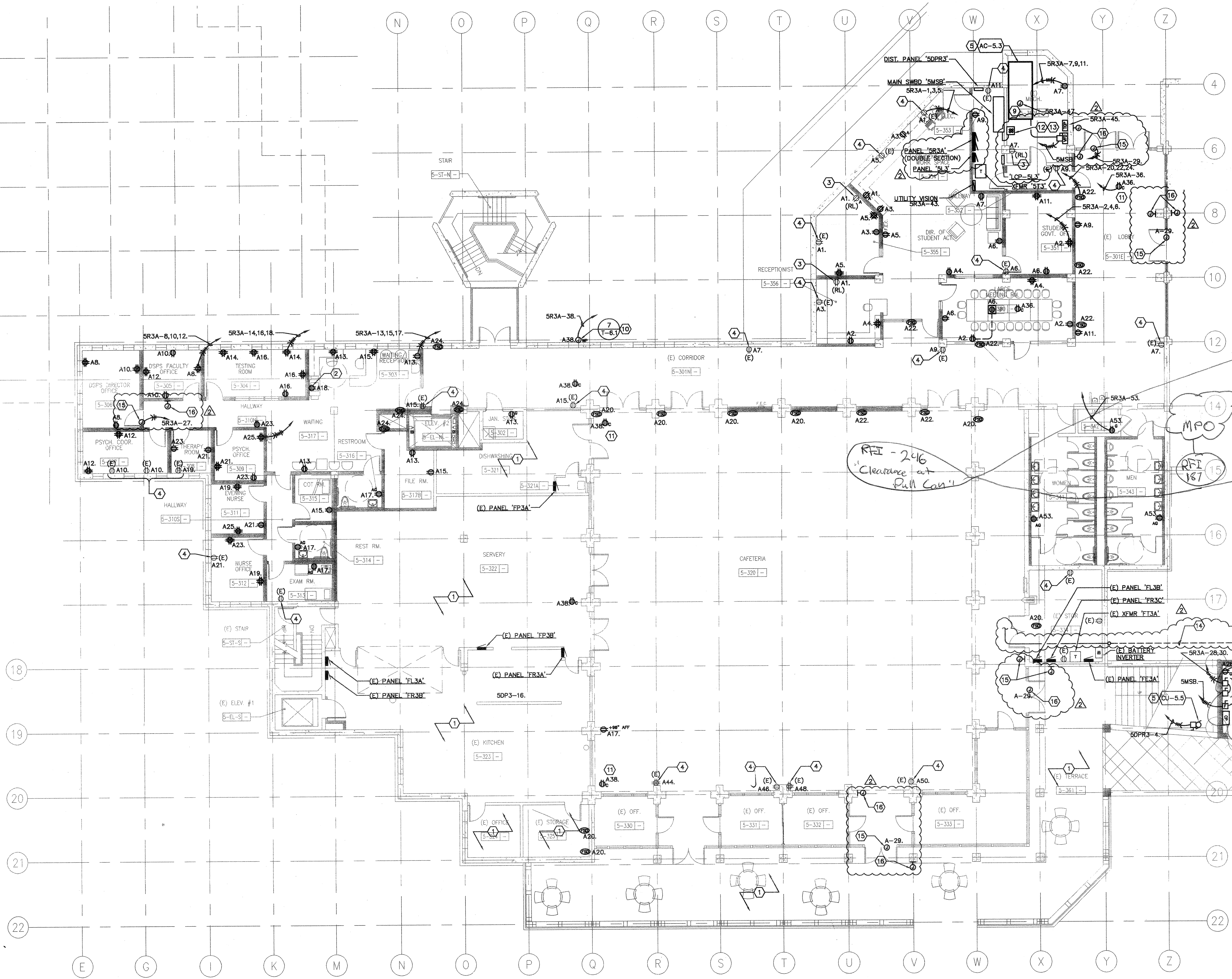
Drawing Number **E3.3**

### GENERAL SHEET NOTES

- A. COORDINATE EXACT LOCATION AND MOUNTING HEIGHT OF RECEPTACLES, VOICE/DATA OUTLETS AND ELECTRICAL DEVICES WITH ARCHITECT PRIOR TO INSTALLATION.
- B. COORDINATE EXACT LOCATION AND POWER REQUIREMENTS OF HVAC UNITS WITH MECHANICAL DRAWINGS PRIOR TO INSTALLATION.
- C. CIRCUITS WITH PREFIX 'A' DENOTES CONNECTION TO PANEL 'SR3A'.

### SHEET KEYNOTES

- 1 NO WORK WITHIN THIS AREA.
- 2 CONNECT NEW RECEPTACLE TO DEDICATED CIRCUIT.
- 3 NEW LOCATION OF RELOCATED RECEPTACLE. INTERCEPT AND EXTEND NEW CIRCUIT FROM PANEL 'SR3A' AND RECONNECT COMPLETE AS REQUIRED TO PLACE BACK INTO SERVICE.
- 4 INTERCEPT AND EXTEND EXISTING CIRCUIT AND CONNECT COMPLETE TO PANEL 'SR3A'.
- 5 REFER TO 'MECHANICAL EQUIPMENT CONNECTION SCHEDULE', SHEET E6.1 FOR MORE INFORMATION.
- 6 PROVIDE FEEDER AND ELEVATOR FUSED DISCONNECT SIZE PER ELEVATOR MANUFACTURER REQUIREMENTS. REFER TO 'SINGLE LINE DIAGRAM', SHEET E5.1 FOR MORE INFORMATION.
- 7 PROVIDE (2) 20A DISCONNECT FOR CONNECTION TO ELEVATOR CAB SERVING LIGHTING AND COMMON LOADS.
- 8 CONNECT RECEPTACLE TO LIGHTING CIRCUIT SHOWN ON E2.3.
- 9 PROVIDE JUNCTION BOX FOR 120V POWER TO DDC CONTROLLER.
- 10 COORDINATE REQUIREMENTS AND ROUGH-IN HEIGHT WITH TECHNOLOGY DRAWINGS.
- 11 FOR SECURITY CAMERA.
- 12 PROVIDE PULLBOX AT LOCATION OF EXISTING CONDUITS STUBS TO INTERCEPT EXISTING FEEDER TO MCC 'F3A' AND EXTEND TO NEW MAIN SWITCHBOARD 'SMSB'. SEQUENCE OF OPERATION FOR CUTTING POWER OVER FROM 'MCC F3A' TO 'SMSB' MUST BE CAREFULLY COORDINATED WITH THE DISTRICT. THE INTENT IS TO MINIMIZE POWER DISRUPTION TO BUILDING 5 IN ORDER TO MAINTAIN NORMAL OPERATIONS OF BUILDINGS 2 AND 8. NEW ELECTRICAL SYSTEM INCLUDING MAIN SWITCHBOARD 'SMSB', DISTRIBUTION PANELBOARDS, AND BRANCH PANELBOARDS MUST BE IN INSTALLED PRIOR TO DEMOLITION OF EXISTING 'MCC F3A'. POWER SHUTDOWN FOR OUTFITTER MUST BE COORDINATED WITH THE DISTRICT. COORDINATE LOCATION OF PULLBOX WITH MECHANICAL CONTRACTOR TO ENSURE ALL EQUIPMENT IN THIS ROOM IS PROPERLY ACCOMMODATED.
- 13 INTERCEPT AND EXTEND EXISTING UNDERGROUND FEEDER TO BUILDING 2 FROM THIS LOCATION TO NEW MAIN SWITCHBOARD 'SMSB'. COORDINATE ALL WORK WITH THE DISTRICT.
- 14 ALL POWER FOR NEW ELEVATOR TO BE RUN UNDERGROUND PRIOR TO ENTERING THE BUILDING THROUGH STORAGE ROOM AS SHOWN. RUN CONDUIT EXPOSED ALONG STORAGE ROOM CEILING AND INTO ACCESSIBLE CEILING SPACE IN CAFETERIA.
- 15 JUNCTION BOX FOR 120V POWER TO DOOR OPERATOR. PROVIDE INTERFACE WITH DOOR ACTUATOR. VERIFY EXACT REQUIREMENTS WITH DOOR HARDWARE MANUFACTURER PRIOR TO ROUGH-IN. PROVIDE ALL WIRING AND RACEWAY AND OTHER APPURTENANCES FOR A FULLY OPERATIONAL SYSTEM.
- 16 JUNCTION BOX FOR INSTALLATION OF DOOR ACTUATOR. VERIFY EXACT LOCATION WITH ARCHITECT PRIOR TO ROUGH-IN.



**1 THIRD FLOOR PLAN - POWER**

0 4' 8' 16'

SCALE: 1/8"=1'-0"