

REMARKS	DATE
ADDENDUM NO. 1	08/18/08
ADDENDUM NO. 2	11/08/08

REVISION HISTORY	DATE

REVISION STATUS	DATE
● DISA PLAN CHECK	08/28/08
● DISA BACK CHECK	01/22/09
● BIDDING / BID #88993	09/18/09
○ CONSTRUCTION	

FILE NO. 41-C1

IDENTIFICATION STAMP DIV. OF THE STATE ARCHITECT
01-110074
AC FL SS
DATE

**BUILDINGS 5 & 6
RENOVATIONS**

San Mateo County Community
College District

BID ADDENDA

APPROVED
DIV OF THE STATE ARCHITECT
ACDHL FLS GP SS 06
APPL NO. 110074 DATE 5/24/10

CAÑADA COLLEGE
4200 Farm Hill Boulevard
Redwood City, CA 94061

**SECOND FLOOR PLAN
- LIGHTING**

Date	08/29/08	Drawing Number	E2.2
Scale	AS NOTED	Project Number	07013

GENERAL SHEET NOTES

- A. COORDINATE EXACT LOCATION AND MOUNTING HEIGHT OF LUMINAIRES AND LIGHTING CONTROLS WITH ARCHITECT PRIOR TO INSTALLATION.
- B. LUMINAIRES SHOWN ON THIS SHEET TO BE CIRCUITED TO PANEL 'SL2' UNLESS OTHERWISE NOTED.
- C. CIRCUITS WITH ARCADE 'E' DEVIATES CONNECTION TO BATTERY INVERTER 'SINV2' LOCATED ON THIS FLOOR.

SHEET KEYNOTES

- 1 NO WORK WITHIN THIS AREA.
- 2 PROVIDE CONTROL RELAY, NINE 24 BLTC SERIES OR EQUAL, SO EMERGENCY LUMINAIRE WILL BE ENERGIZED IN THE EVENT OF POWER FAILURE, EVEN IF CONTROL SWITCH IS IN 'OFF' POSITION. LUMINAIRES SHALL BE DUAL CIRCUITED WITH EMERGENCY POWER FROM BATTERY INVERTER 'SINV2'.
- 3 HOME RUN TO BATTERY INVERTER 'SINV2', CIRCUIT #1, LOCATED ON THIS FLOOR.
- 4 INTERCEPT AND EXTEND EXISTING STAIRWAY LIGHTING CIRCUIT TO NEW LUMINAIRE.

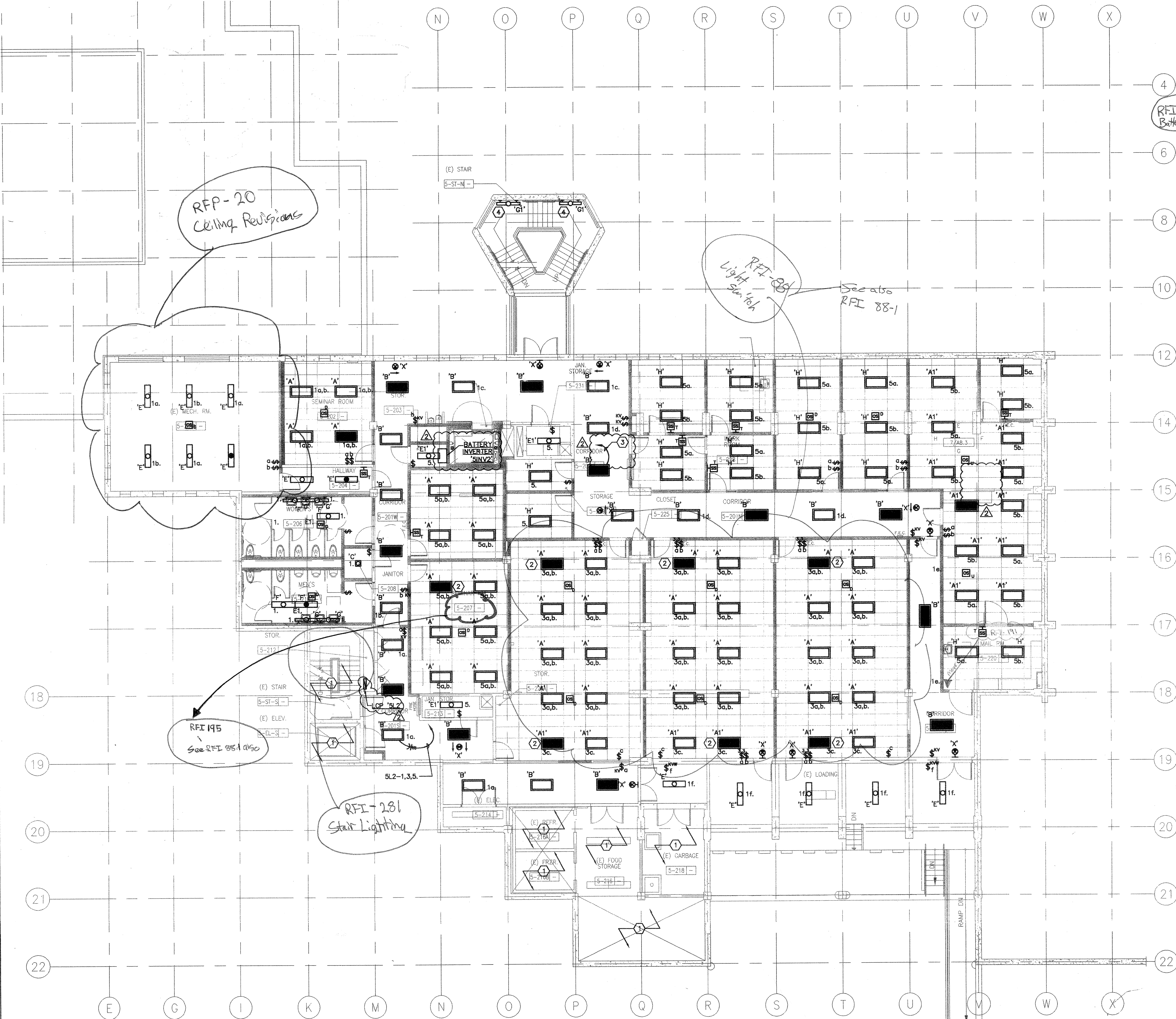
RFI-223
Battery Inverter

RFI-88
Light Switch
See also RFI 88-1

RFP-20
Ceiling Revisions

RFI 195
See RFI 88-1 also

RFI-281
Stair Lighting



1 SECOND FLOOR PLAN - LIGHTING
0 4' 8' 16'
SCALE: 1/8"=1'-0"