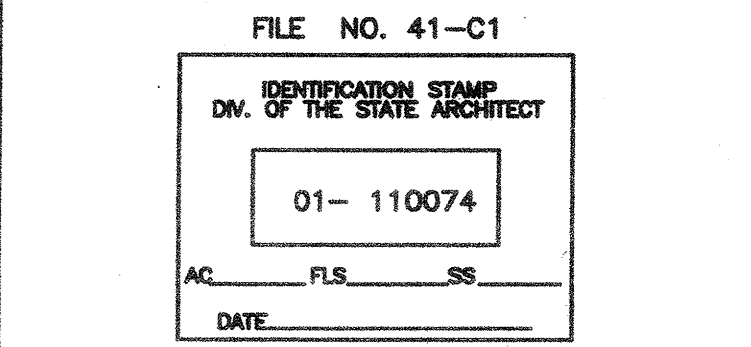


GENERAL NOTES:
1. This sheet is part of a set and is not to be used alone.
2. This sheet is not to be used for construction unless the architect's stamp and signature appear on the drawings and the status box indicates drawings have been released for construction.
3. These plans and prints thereof, as instruments of service, are owned by the architect and are for use on this project only. Reproduction and/or distribution without the prior written consent of the architect is forbidden.
4. Copyright Bunton Clifford Associates, 2009

REVISIONS	DATE
ADDENDUM NO. 1	08/18/09
ADDENDUM NO. 2	11/08/09

REVISIONS	DATE

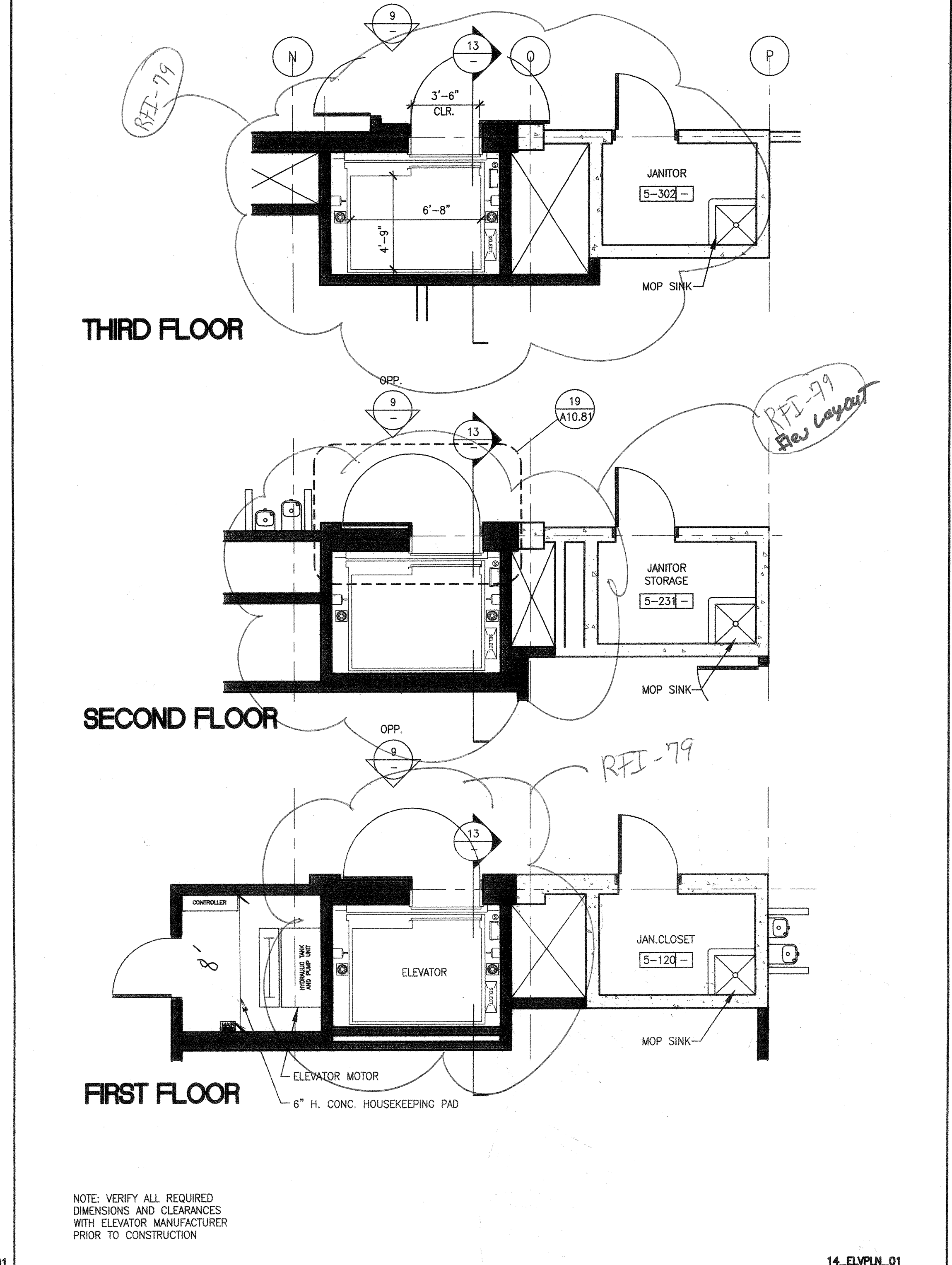


BUILDINGS 5 & 6 RENOVATIONS
San Mateo County Community College District

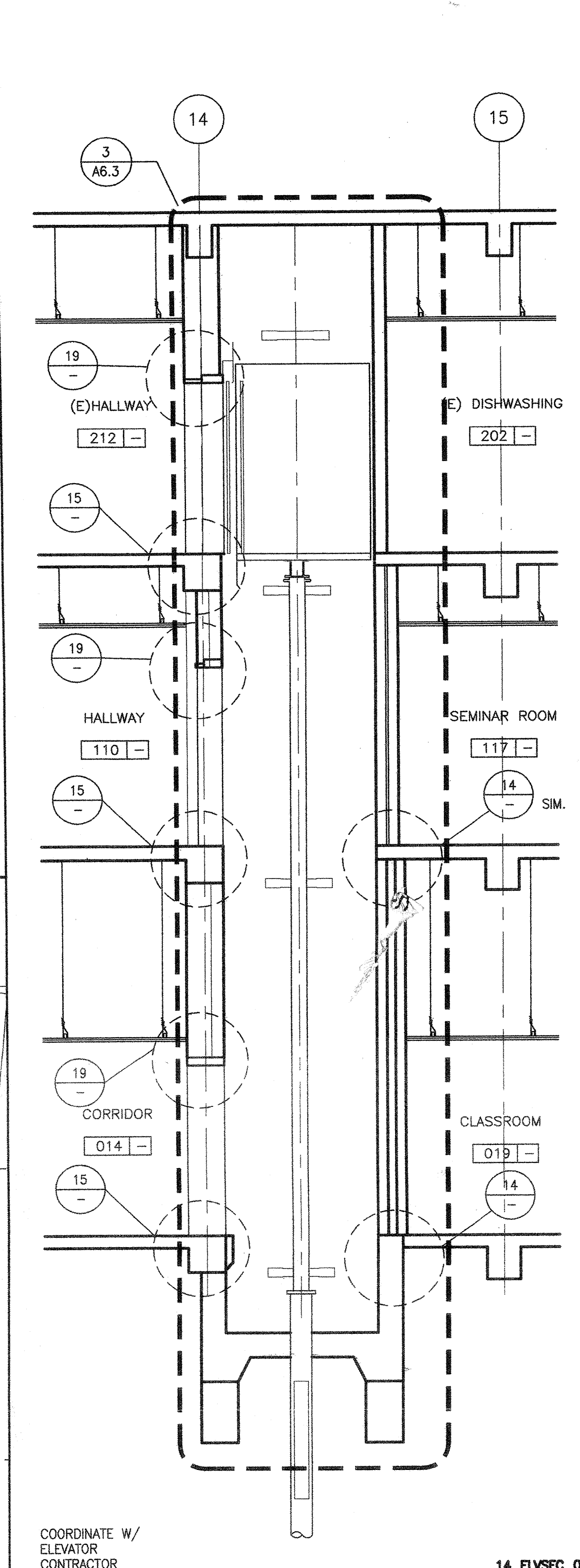
APPROVED BY: [Signature]
DATE: 5/12/10

CAÑADA COLLEGE
4200 Farm Hill Boulevard
Redwood City, CA 94061

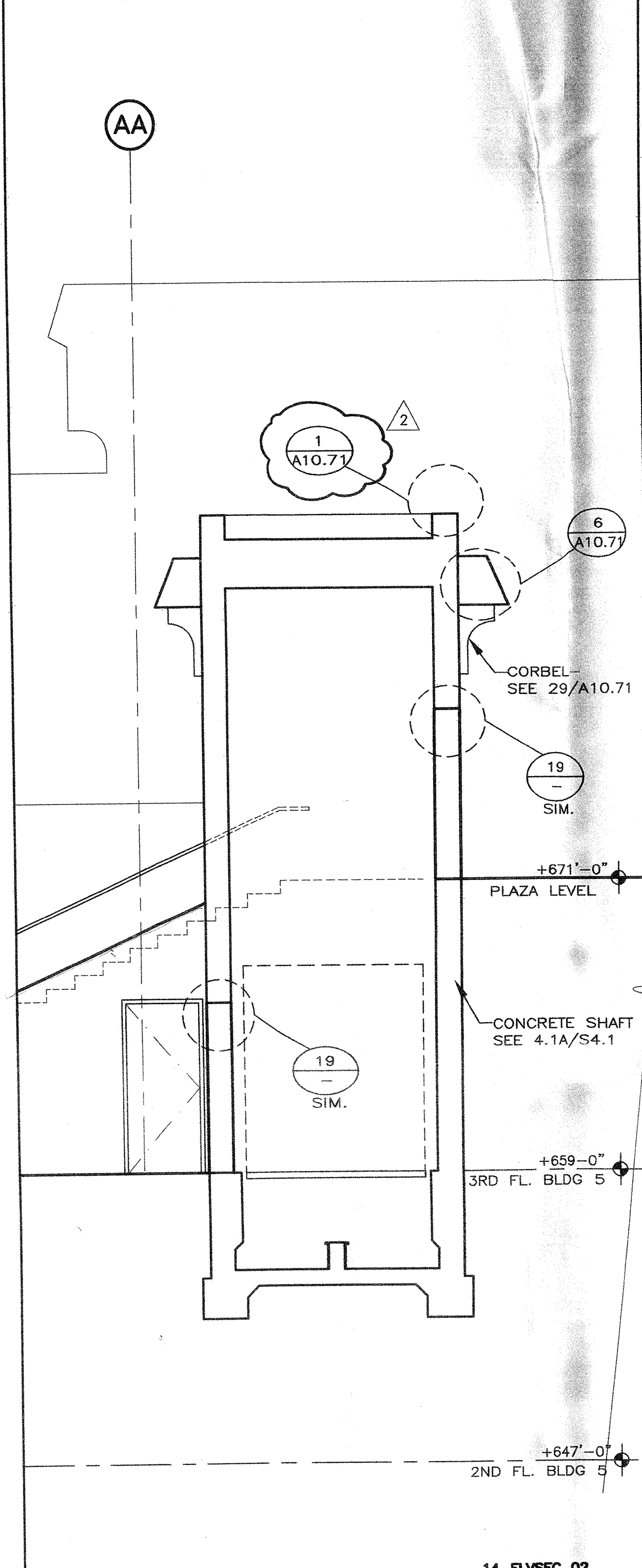
ELEVATOR ENLARGED PLANS, SECTIONS AND DETAILS



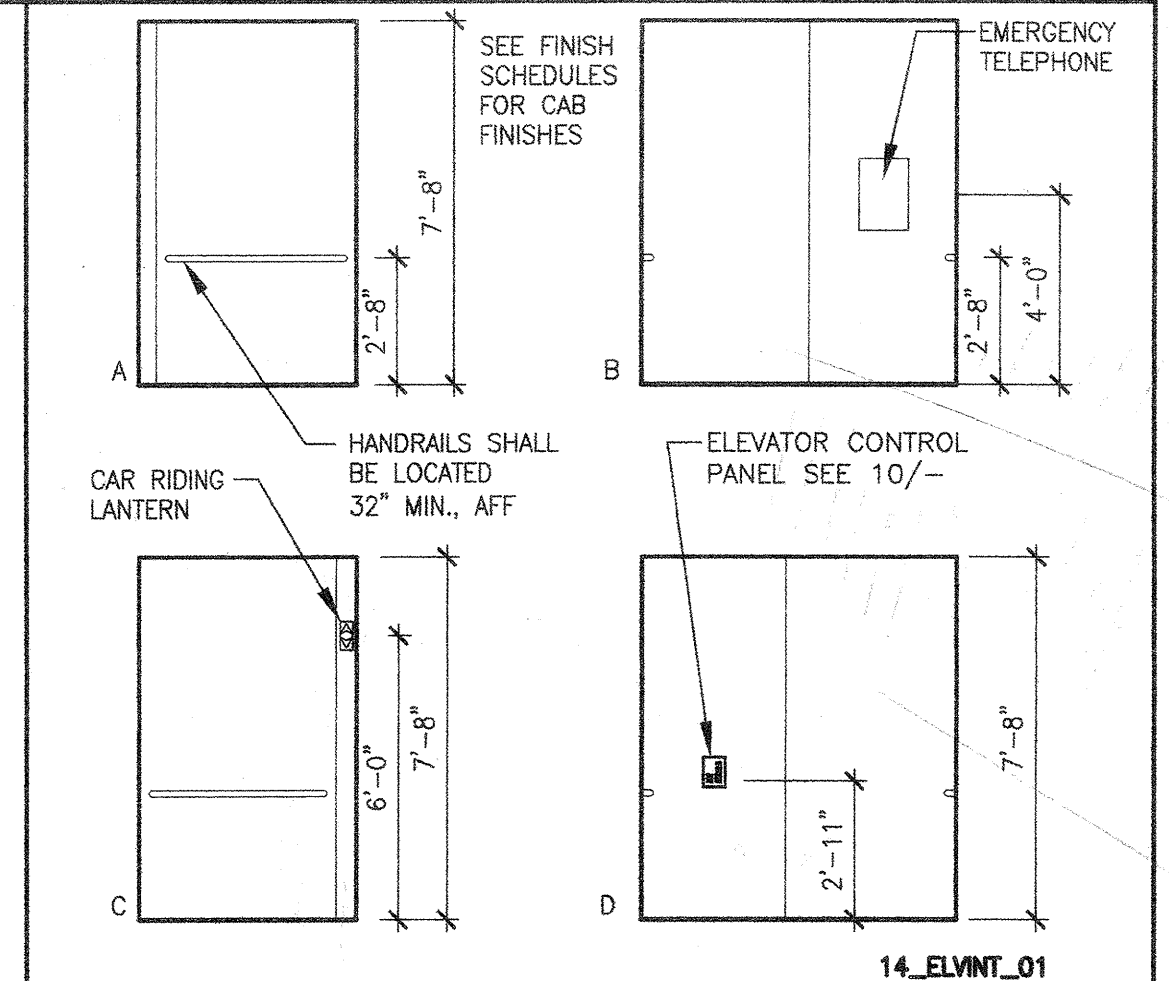
8 TYP. INTERIOR ELEVATOR ENLARGED PLANS 1/4" = 1'-0"



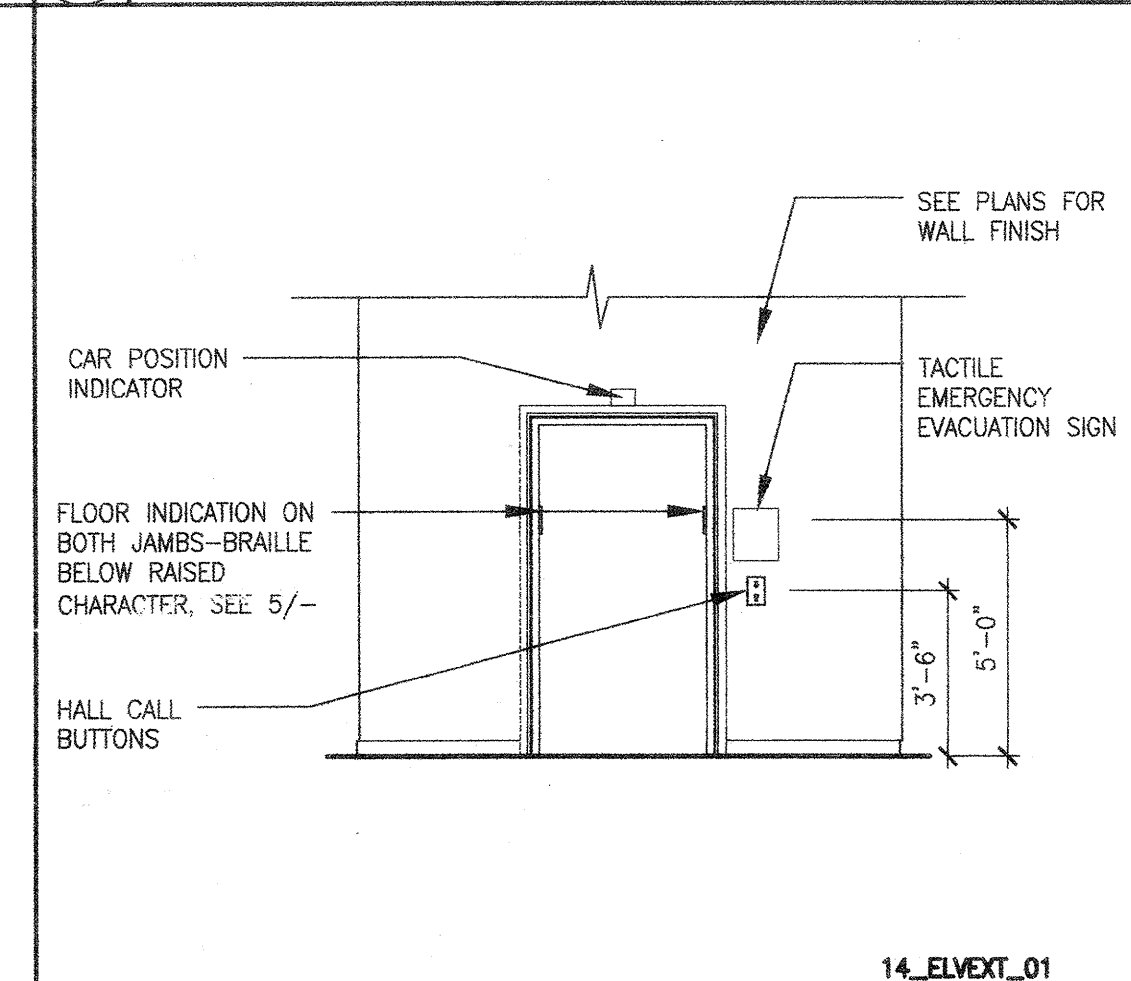
13 INTERIOR ELEVATOR SECT. 1/4" = 1'-0"



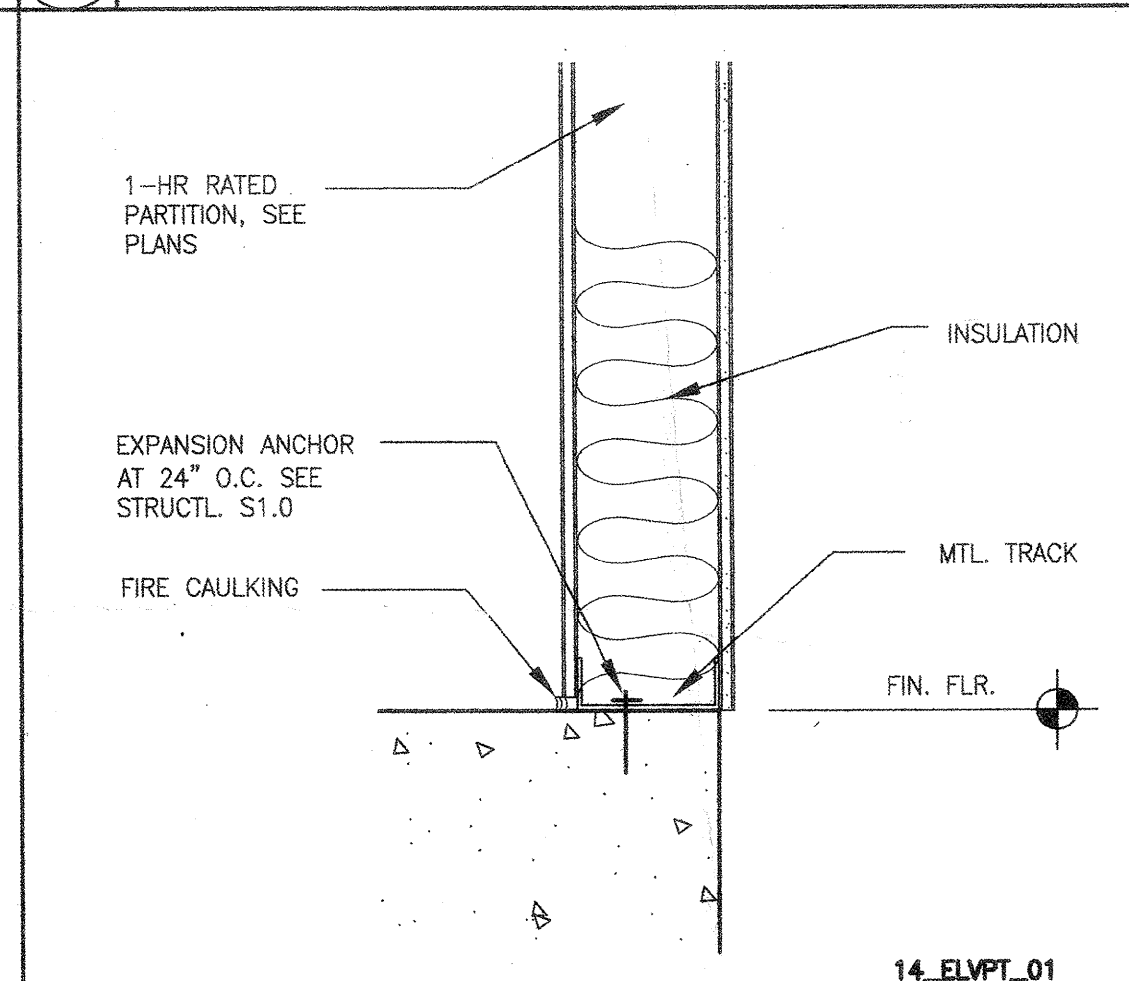
18 EXTERIOR ELEVATOR SECT. 1/4" = 1'-0"



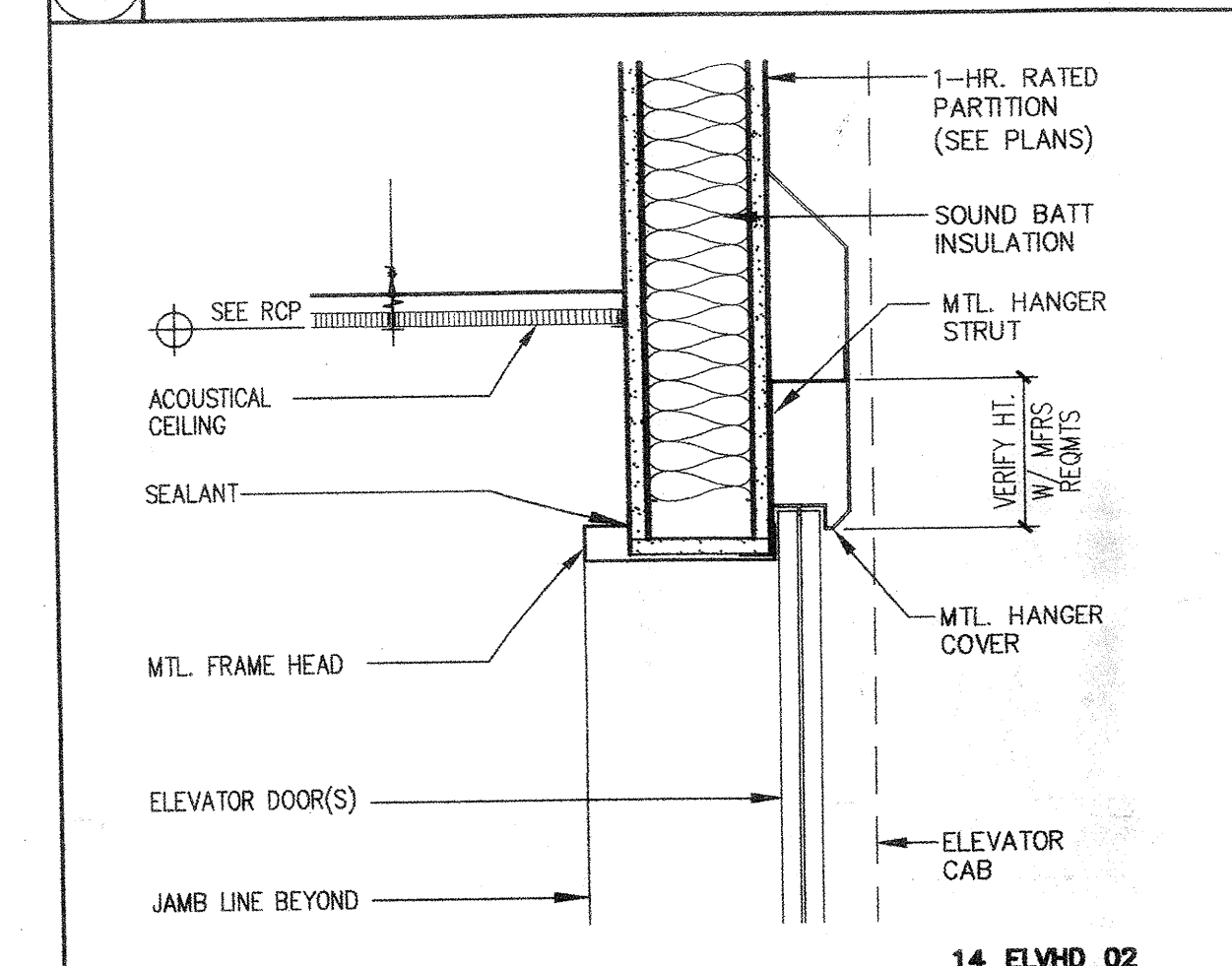
4 TYP. ELEVATOR INT. ELEV. 1/4" = 1'-0"



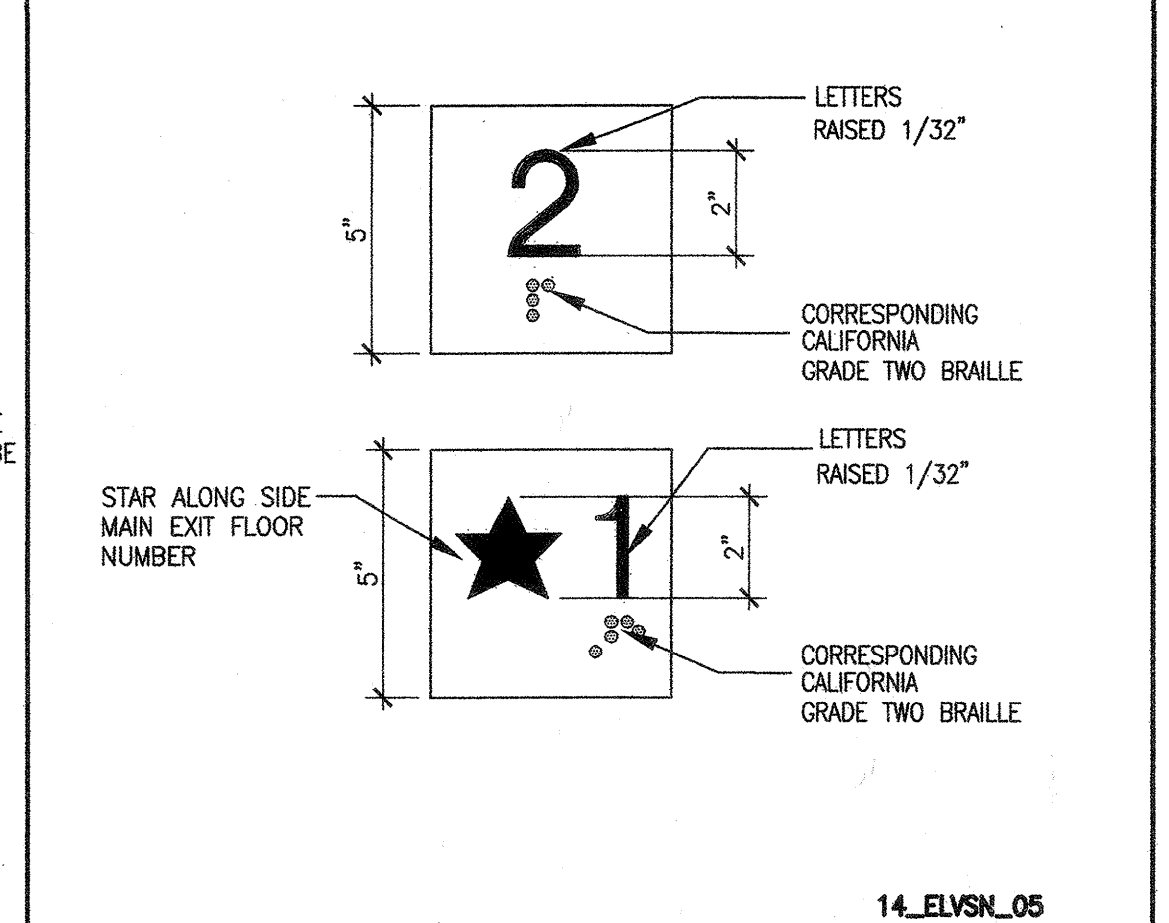
9 TYP. ELEVATOR EXT. ELEV. 1/4" = 1'-0"



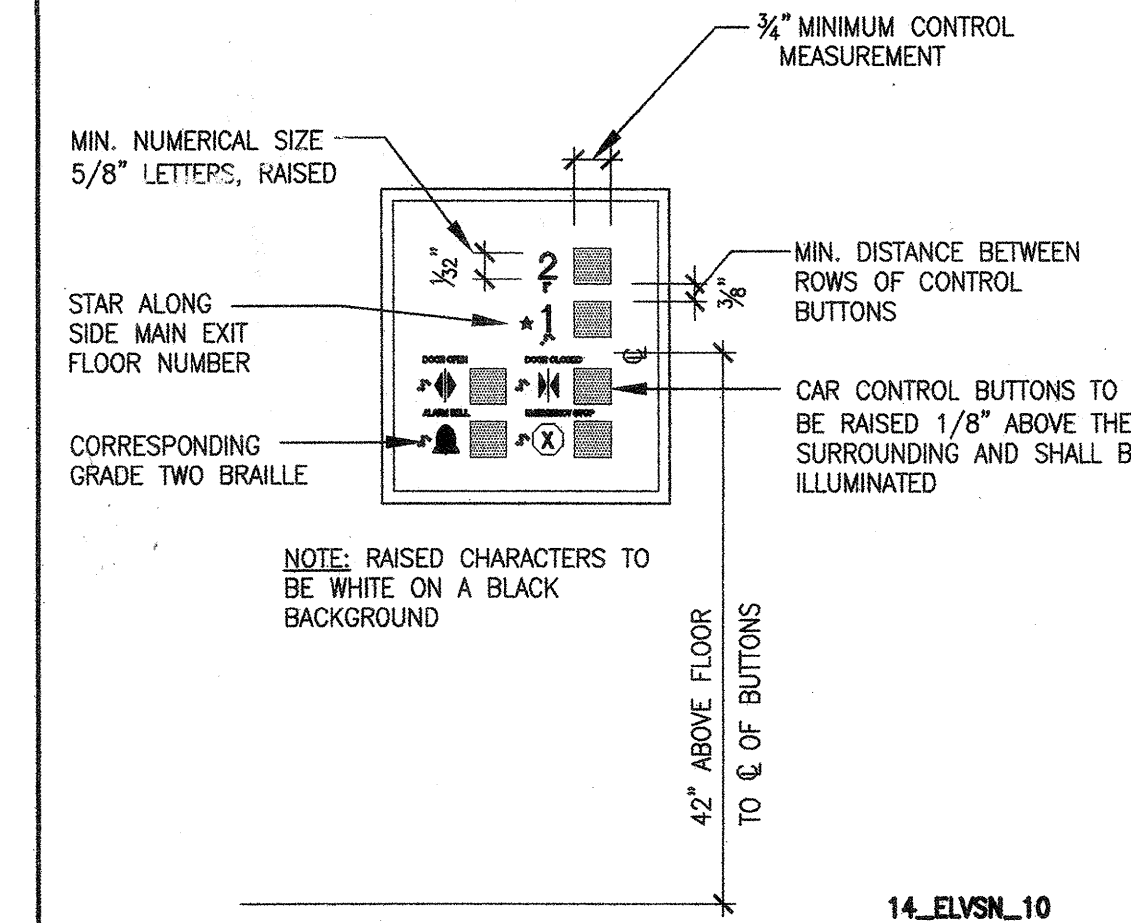
14 ELEVATOR WALL • PIT 1-1/2" = 1'-0"



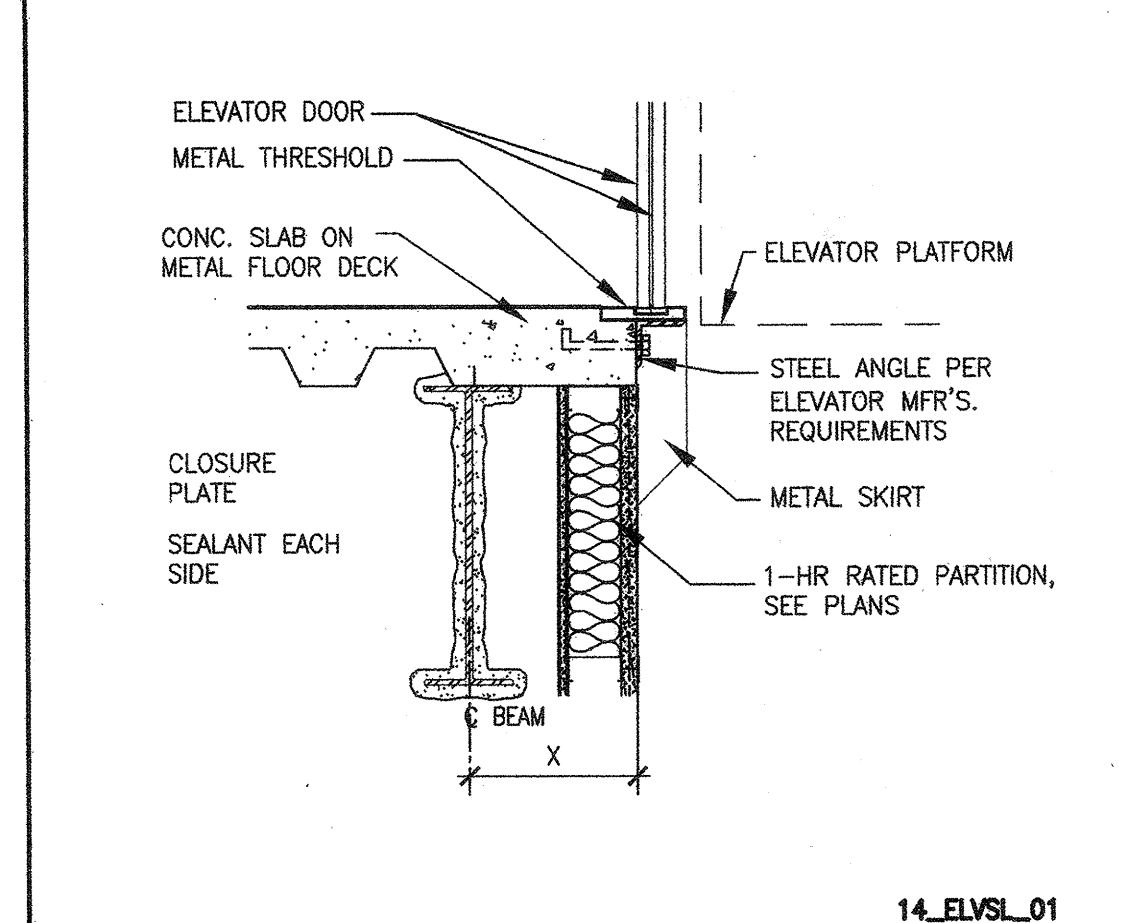
19 ELEVATOR HEAD 1-1/2" = 1'-0"



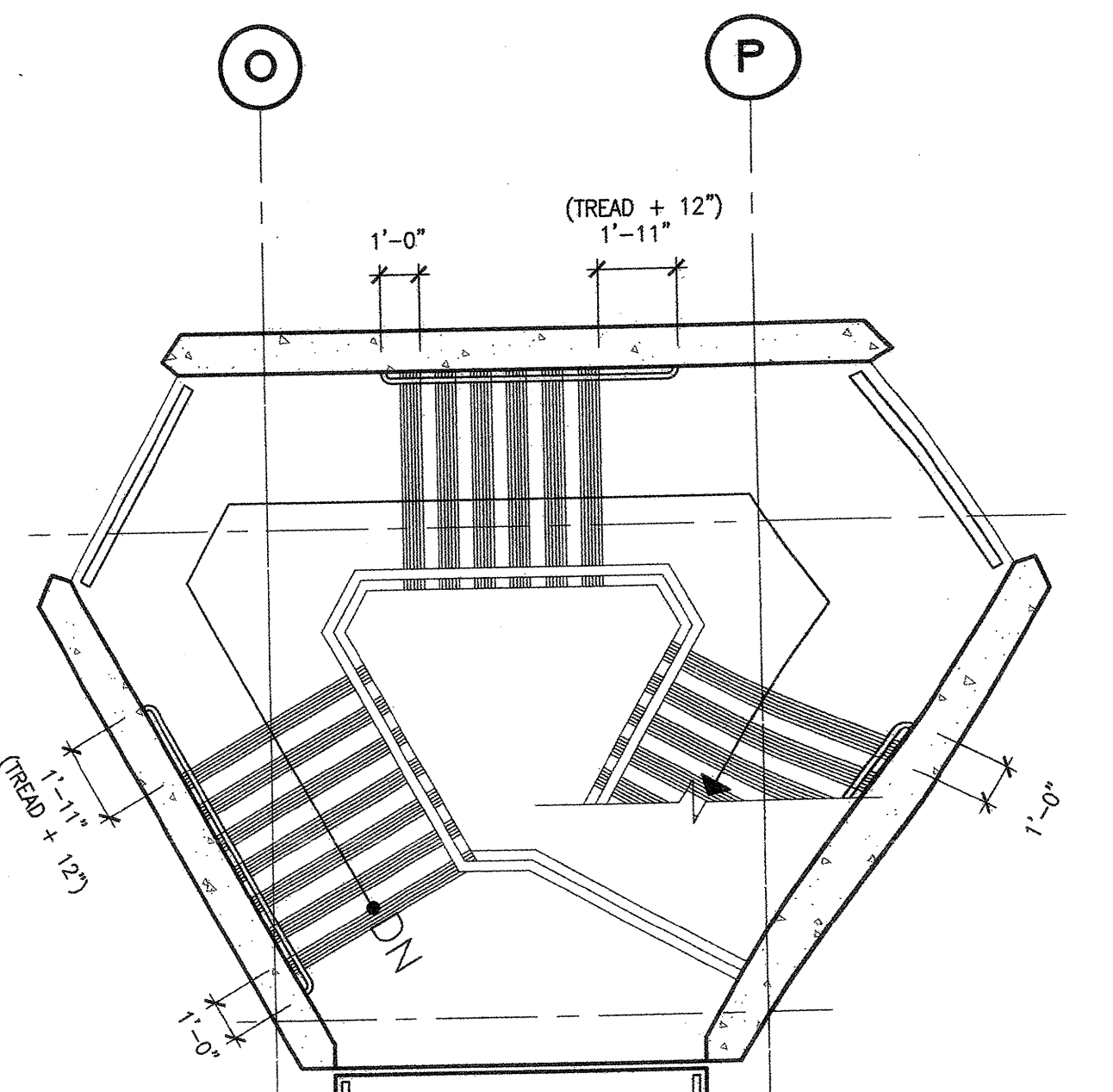
5 FLOOR INDICATOR SIGNAGE 3" = 1'-0"



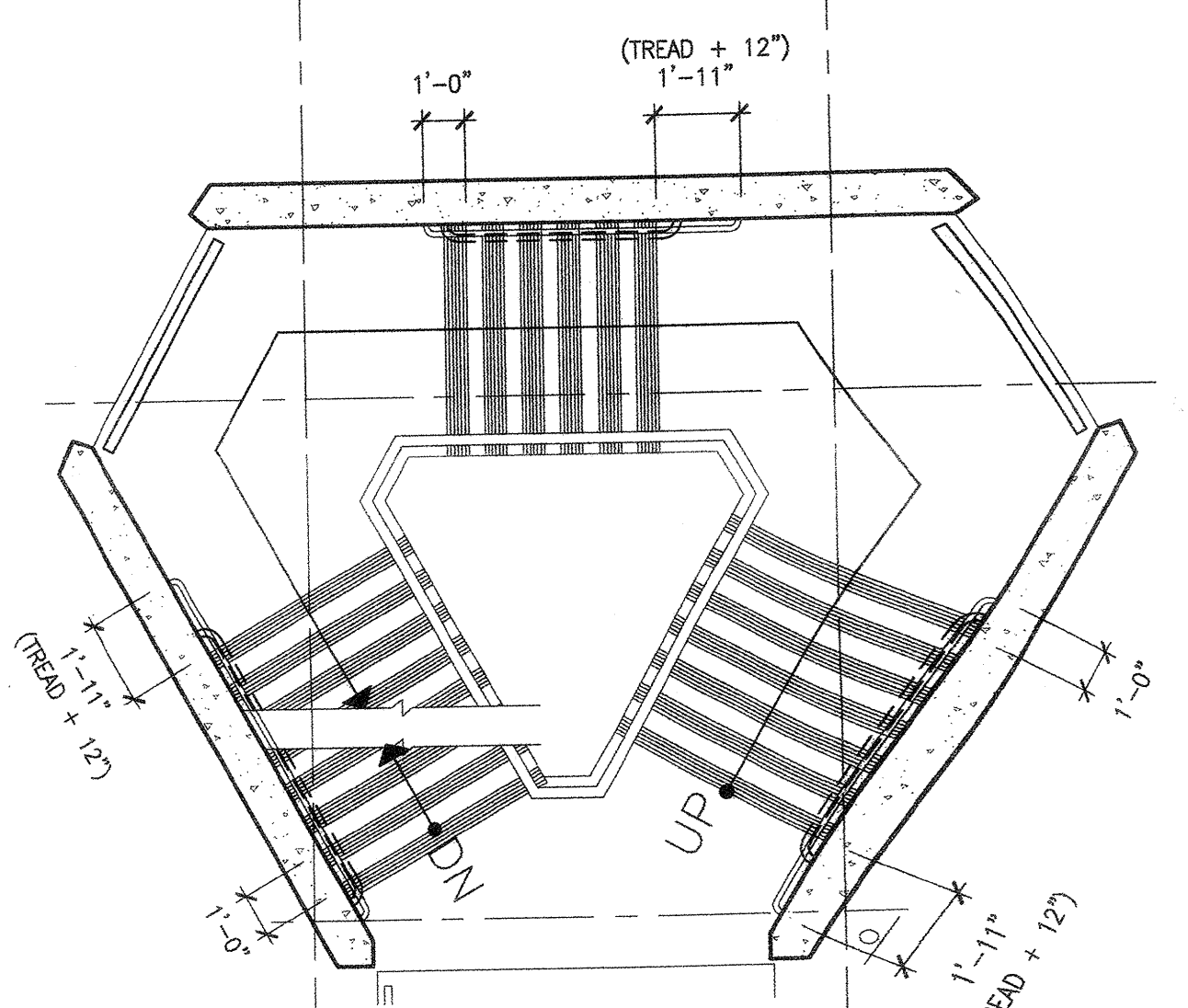
10 CONTROL PANEL SIGNAGE 3" = 1'-0"



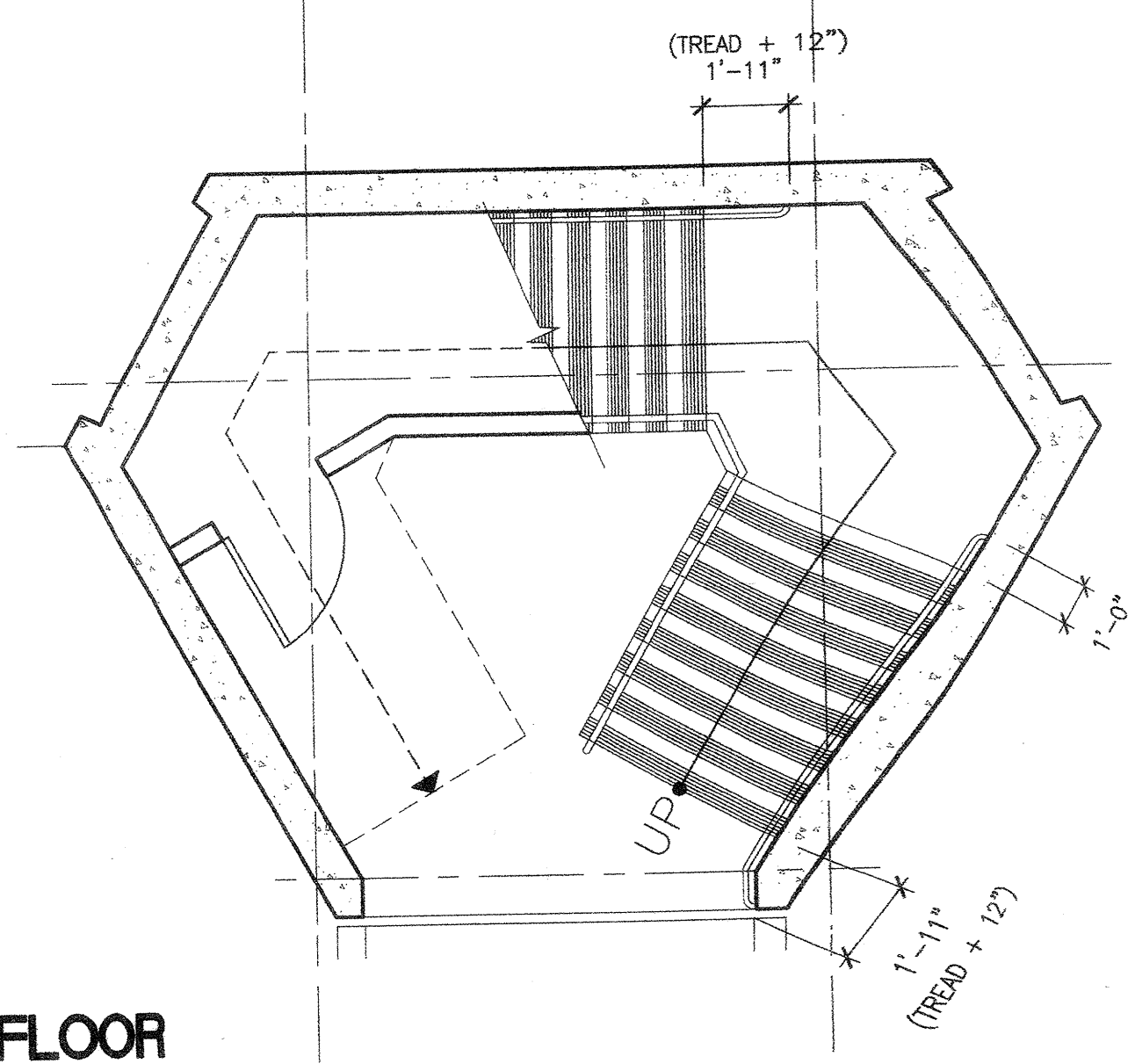
15 ELEVATOR SILL 1" = 1'-0"



THIRD FLOOR



SECOND FLOOR



FIRST FLOOR

NEW RAILINGS AT STAIR S-ST-N 1/4" = 1'-0"

RFI 140 See opposite #1-8
Interior Elevator shaft