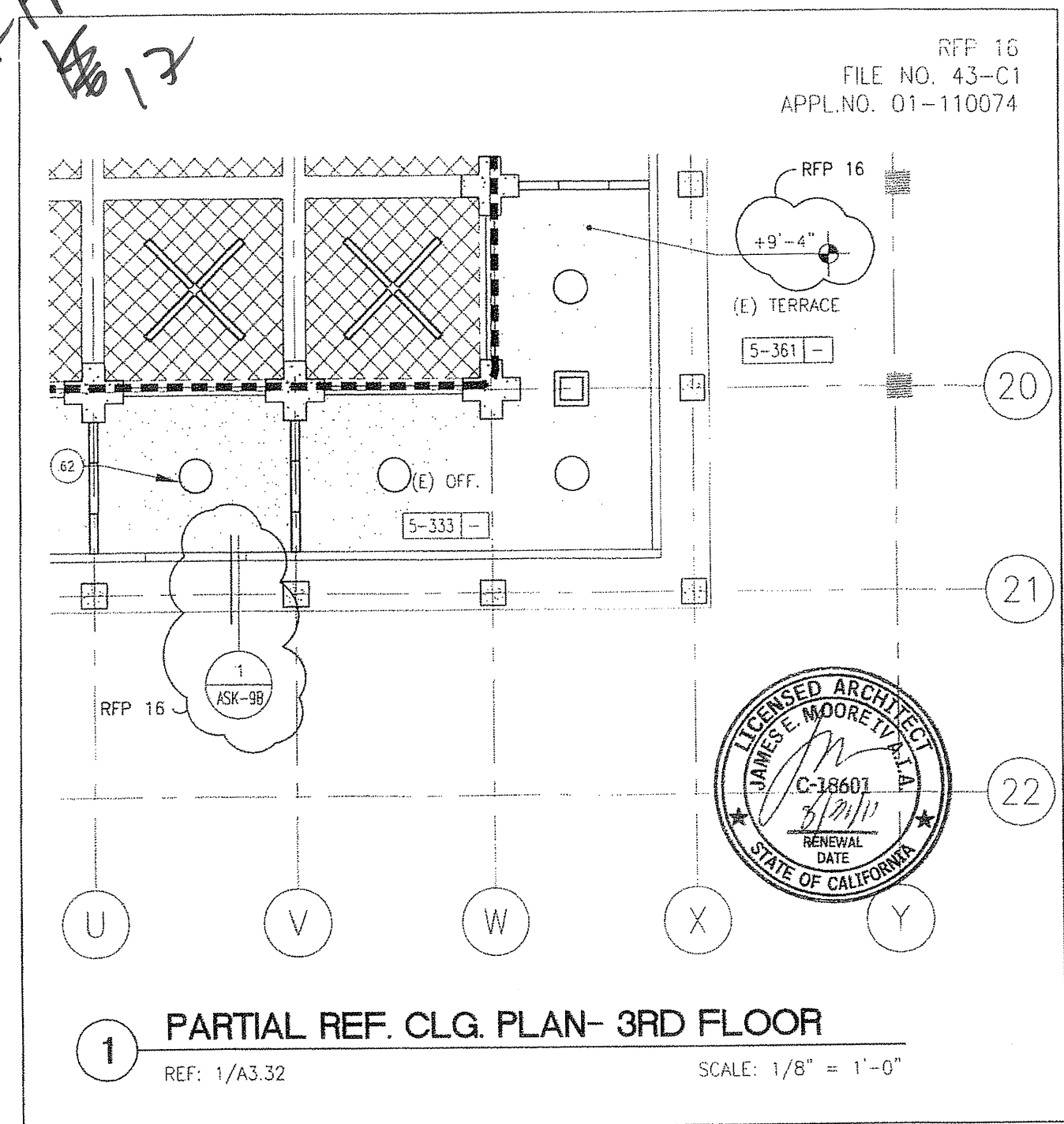


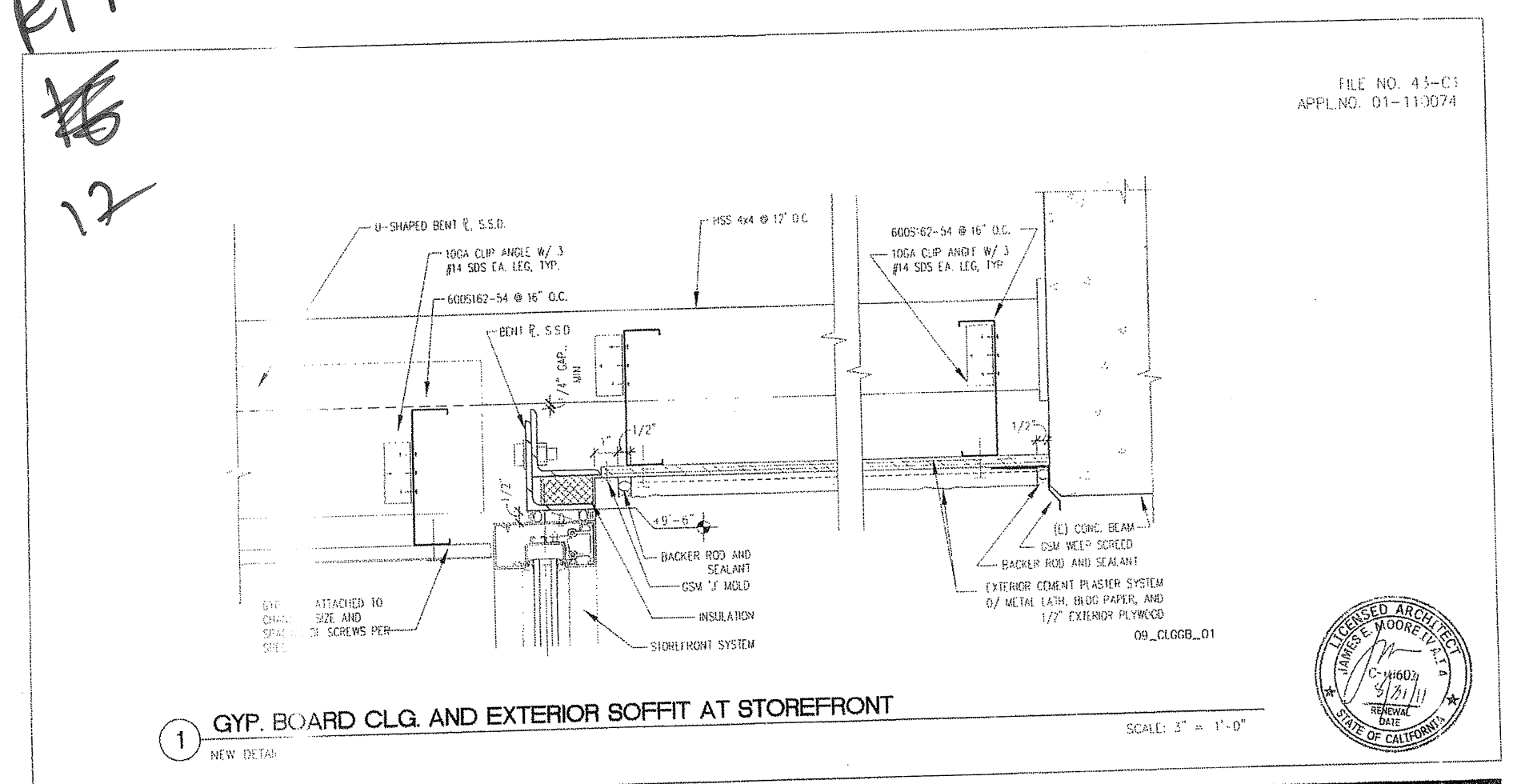
RFP #12



BCIA ARCHITECTURE
PLANNING
INTERIORS
303 S. W. 10th St.
San Mateo, CA 94403
(415) 351-1000
www.bciamt.com

PROJECT: SOFFIT AT 3RD FLR. EXTERIOR STOREFRONTS
SHEET: RFI 23/ FCD 20
DATE: 07/19/16
DRAWN BY: ASK-9A
CHECKED BY: [Signature]

RFP #12



BCIA ARCHITECTURE
PLANNING
INTERIORS
303 S. W. 10th St.
San Mateo, CA 94403
(415) 351-1000
www.bciamt.com

PROJECT: SOFFIT AT 3RD FLR. EXTERIOR STOREFRONTS
SHEET: RFI 23/ FCD 20
DATE: 07/19/16
DRAWN BY: ASK-9A
CHECKED BY: [Signature]