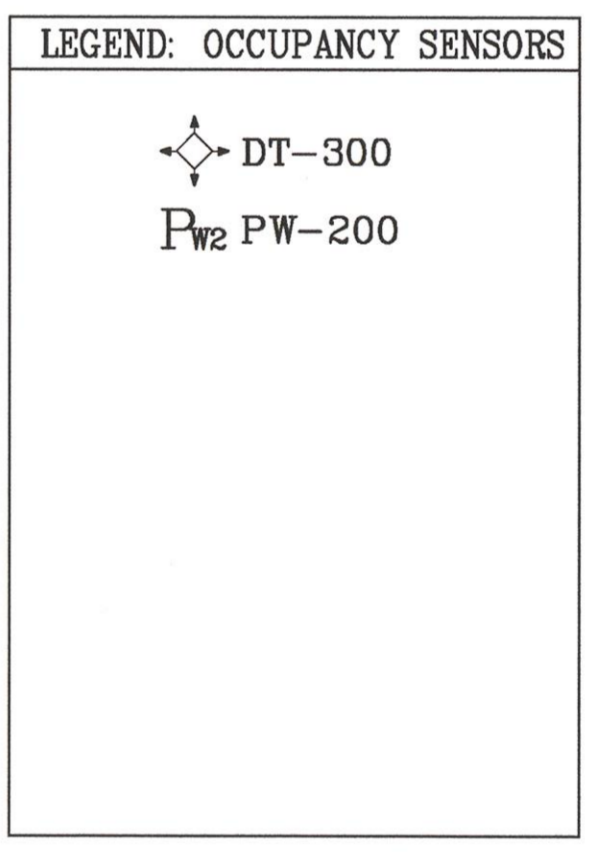
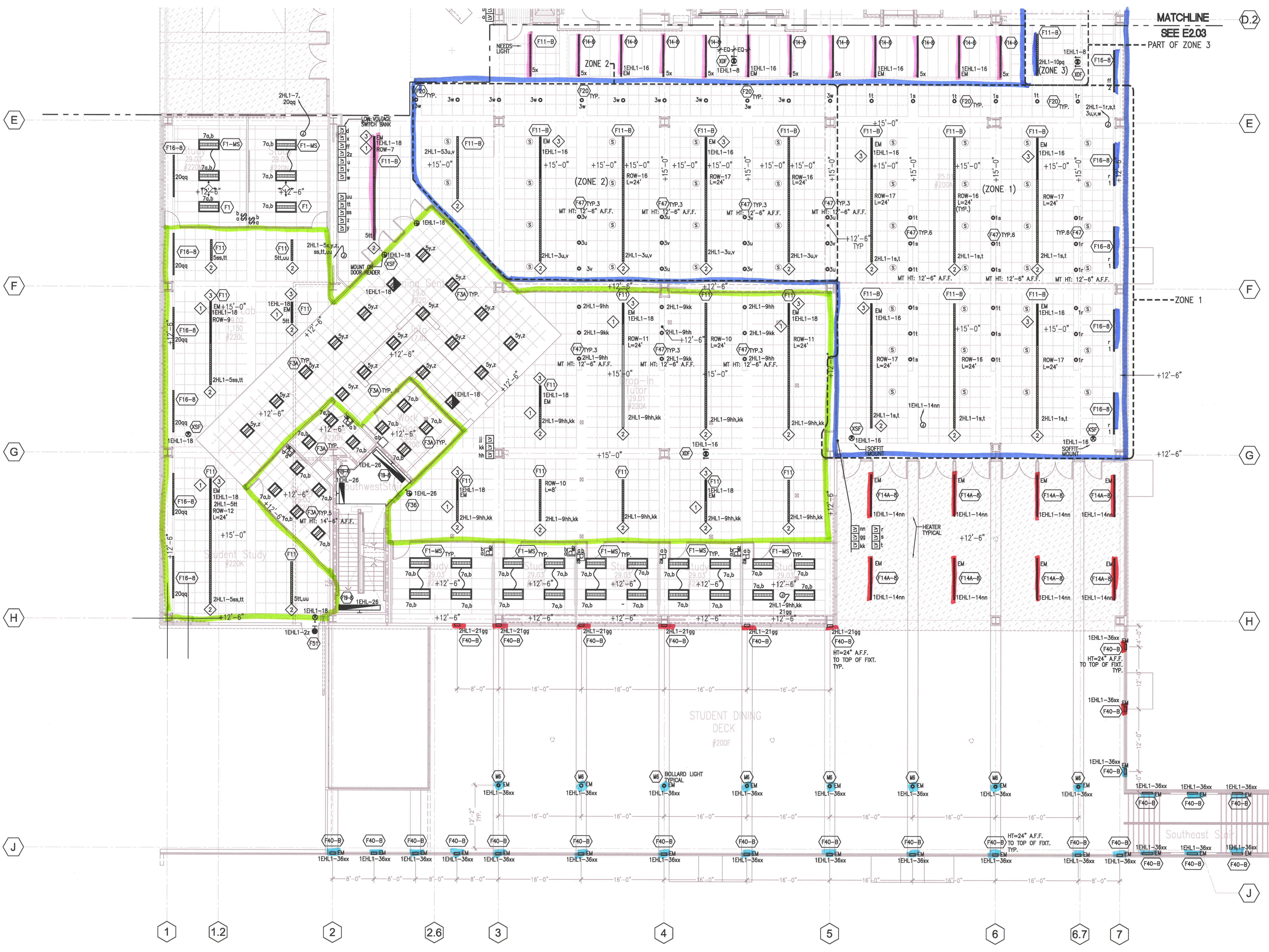


Revision	Description	Date
1	FCD 11 DTD SIGN COORDINATION	07/27/10
2	PROVIDE CHAIR SIGN	FCD 041 12/14/09
3	REVISION TO SIGN COORDINATION	FCD 041 03/02/10
4	REVISION TO SIGN COORDINATION	FCD 041 03/02/10
5	REVISION TO SIGN COORDINATION	FCD 041 03/02/10
6	REVISION TO SIGN COORDINATION	FCD 041 03/02/10
7	REVISION TO SIGN COORDINATION	FCD 041 03/02/10
8	REVISION TO SIGN COORDINATION	FCD 041 03/02/10
9	REVISION TO SIGN COORDINATION	FCD 041 03/02/10
10	REVISION TO SIGN COORDINATION	FCD 041 03/02/10

Revision	Description	Date
1	100% Design Development	07/27/10
2	50% Construction Documents	08/19/09
3	50% Construction Documents	12/09/09
4	50% Construction Documents	03/11/10
5	50% Construction Documents	07/27/10
6	50% Construction Documents	08/05/09
7	50% Construction Documents	FCD 014
8	50% Construction Documents	FCD 014
9	50% Construction Documents	FCD 014
10	50% Construction Documents	FCD 014

Job No.	Date
10N_300085	March 2009
Drawn by	
Checked by	
Scale	
LIGHTING PLAN LEVEL 2 - SOUTH	
E2.04-R1	



1 Lighting Plan - Level 2 - South
E2.04
SCALE: 1/8" = 1'-0"

- GENERAL NOTES**
- ALL 277V, NORMAL LIGHTING DEVICES SHALL BE CIRCUITED TO PANEL "2HL1", U.O.N.
 - ALL 277V, EMERGENCY LIGHTING DEVICES SHALL BE CIRCUITED THRU EMERGENCY LIGHTING INVERTER TO PANEL "2EHL", U.O.N.
 - ALL 120V, NORMAL LIGHTING DEVICES SHALL BE CIRCUITED TO PANEL "2LN11/2LN12", U.O.N.
 - ROUTE EXTERIOR LIGHTING V.A. LCP AND PHOTOSENSOR MOUNTED ON ROOF FACING NORTH. CONTROLS SHALL BE INTERFACED WITH BMS.
 - REVISION OF V.P. SUITE (FCD 23-R1) WILL ENTAIL A REVIEW OF TITLE 24 AND DUE TO CHANGE IN LIGHTING FIXTURE COUNT AND LG POWER DENSITY.

- SHEET NOTES**
- 1/2 OF LAMPS IN LINEAR FIXTURES ARE CONNECTED TO AN EMERGENCY CIRCUIT AS INDICATED ON PLAN.
 - NORMAL POWER FEED END.
 - EMERGENCY POWER FEED END.
 - NOT USED.

