

LEGEND

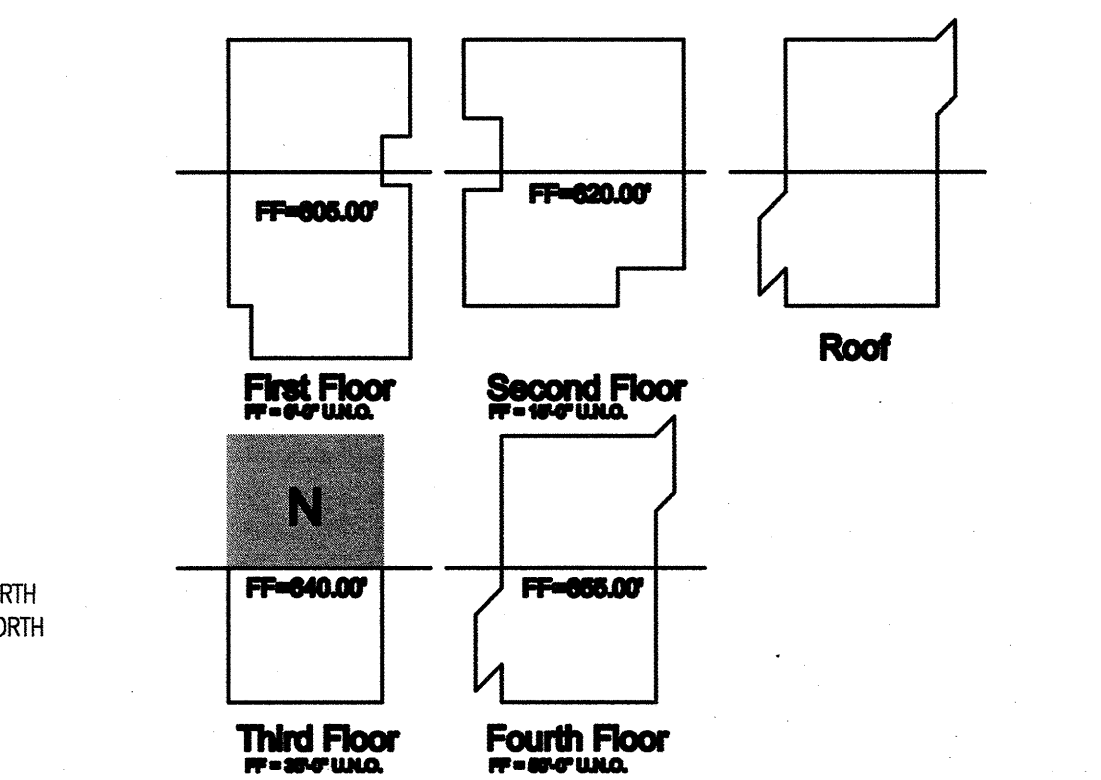
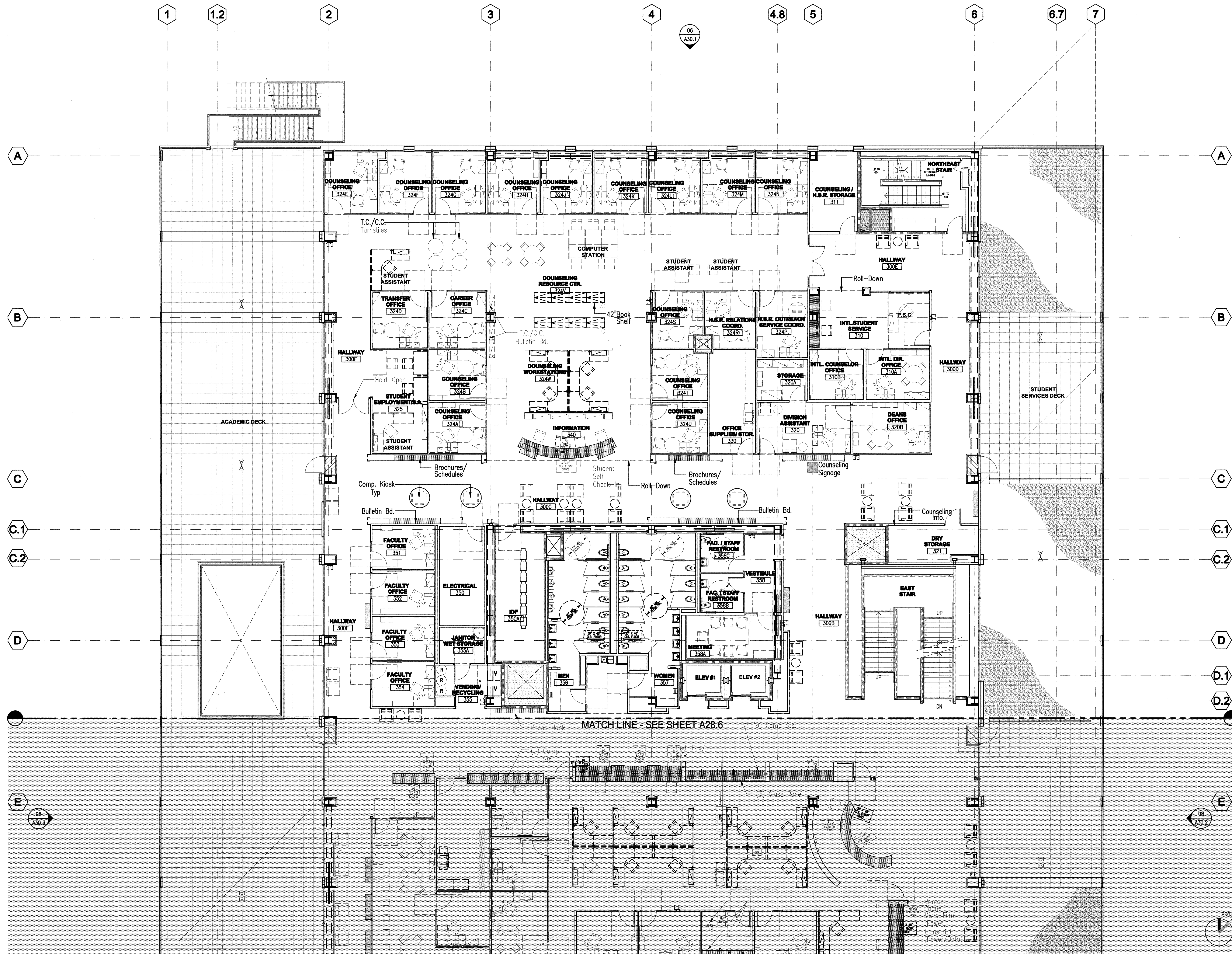
- [Hatched Pattern] CASEWORK, GROUP 1
- [Dashed Pattern] FURNITURE/EQUIPMENT SHOWN DASHED, N.I.C., GROUP 2
- [Stippled Pattern] CASEWORK PROVIDED BY FRANKLIN FIXTURES

GENERAL NOTES

1. FURNITURE N.I.C., SHOWN FOR REFERENCE ONLY BANQUETTE @ WALL COF
2. FOR CASEWORK NOTES, SEE FLOOR PLANS
3. LAYOUT PROVIDED TO COORDINATE POWER, LIGHTING, FINISH
4. TIERED CLASSROOMS IN BASE BUILDING CONTRACT. REFER TO ENLARGED PLANS, SHEET 06,08/A11.8

This set of other project documents end of sheet, schedules and design incorporated herein are intended to be used as project documents on the registered property of LPA, KH, LLP and shall not be used in whole or in part for any project or system except as described in the contract agreement between McCarthy and the District. LPA hereby grants herein notice that any such project document, use, reproduction or modification thereof, in any way, without the written consent of LPA and KH's Consents to the recipient shall constitute a breach of the contract. LPA and KH's Consents shall be in writing and shall be a representation of no-hold or no-claim. LPA and KH's Consents shall be in writing and shall be a representation of no-hold or no-claim. LPA and KH's Consents shall be in writing and shall be a representation of no-hold or no-claim.

© Copyright 2008



THIRD FLOOR FURNITURE & EQUIPMENT PLAN (N), FOR REFERENCE 08

College of San Mateo
Building 10N
San Mateo, CA
Developed for
San Mateo County Community College District

Date	Description
06/06/08	100% Design Development
07/20/08	90% Construction Documents
09/18/08	100% Construction Documents
12/08/08	100% Construction Documents
03/11/09	100% Final

Job No.	27082.20
Date	March 2009
Drawn by	
Checked by	
Scale	1/8" = 1'-0"
THIRD FLOOR FURNITURE & EQUIPMENT PLAN (N)	
A28.5	