



# Bid 86658 Building 12 and Colonnades Roof Replacement Project



# College of San Mateo



Pre-Bid Conference March 7, 2013

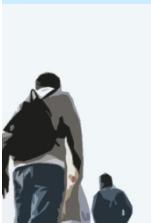




- Welcome and Introductions
- District Website Navigation
- Pre-Bid Conference Administration
- Project Schedule
- Project Overview
- Occupied Campus Coordination Requirements
- Contract & Reference Documents
- Question & Answer
- Sitewalk

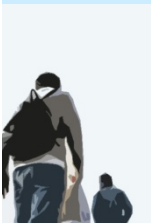


# Agenda





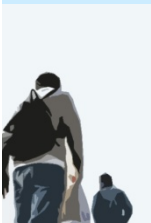
- **José Nuñez**, Vice Chancellor of District Facilities Planning, Maintenance & Operations
- **Karen Powell**, Facilities Manager, College of San Mateo
- **Peter Hempel**, Construction Project Manager, Swinerton Management and Consulting
- **Bill Krill**, Construction Project Manager, Swinerton Management & Consulting



## Owner Team



- **Eugene Buick**, Principal, Allana Buick and Bers
- **Rob Worthing**, Consultant, Allana Buick and Bers
- **Bob Kuykendall**, Principal, The Denali Group



## Consultant Team



- District Website (District / College general):  
[www.smccd.edu](http://www.smccd.edu)
- Business Opportunities (Construction related):  
<http://www.smccd.edu/accounts/smccd/departments/facilities/CSMBusOps.shtml>
- Project Website (Project related):  
<http://www.smccd.edu/accounts/smccd/departments/facilities/CSMBusOps.shtml>





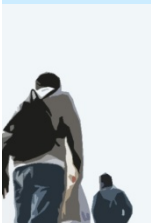
- Mandatory pre-bid Conference
- Thursday, March 7, 2013 10:00am
- Please sign-in
- Sign-in receipt





- **Qualified Bidders**

- **Prime** bidder must be a C39 Licensed Roofing contractor listed on SMCCCD 2013 Pre-Qualified Contractors List  
<http://www.smccd.edu/accounts/smccd/departments/facilities/PrequalCC.shtml>



Qualification Requirements



<http://www.smccd.edu/accounts/smccd/departments/facilities/CSMBusOps.shtml>

- **Bid Period:** February 26 – March 21, 2013
- **Last RFI Accepted:** 5 pm Tuesday, March 12, 2013
- **Final Addenda Issued:** 5 pm Friday, March 15, 2013
- **Bid Submittal:** **Thursday, March 21, 2013 2:00pm**



Bid Schedule



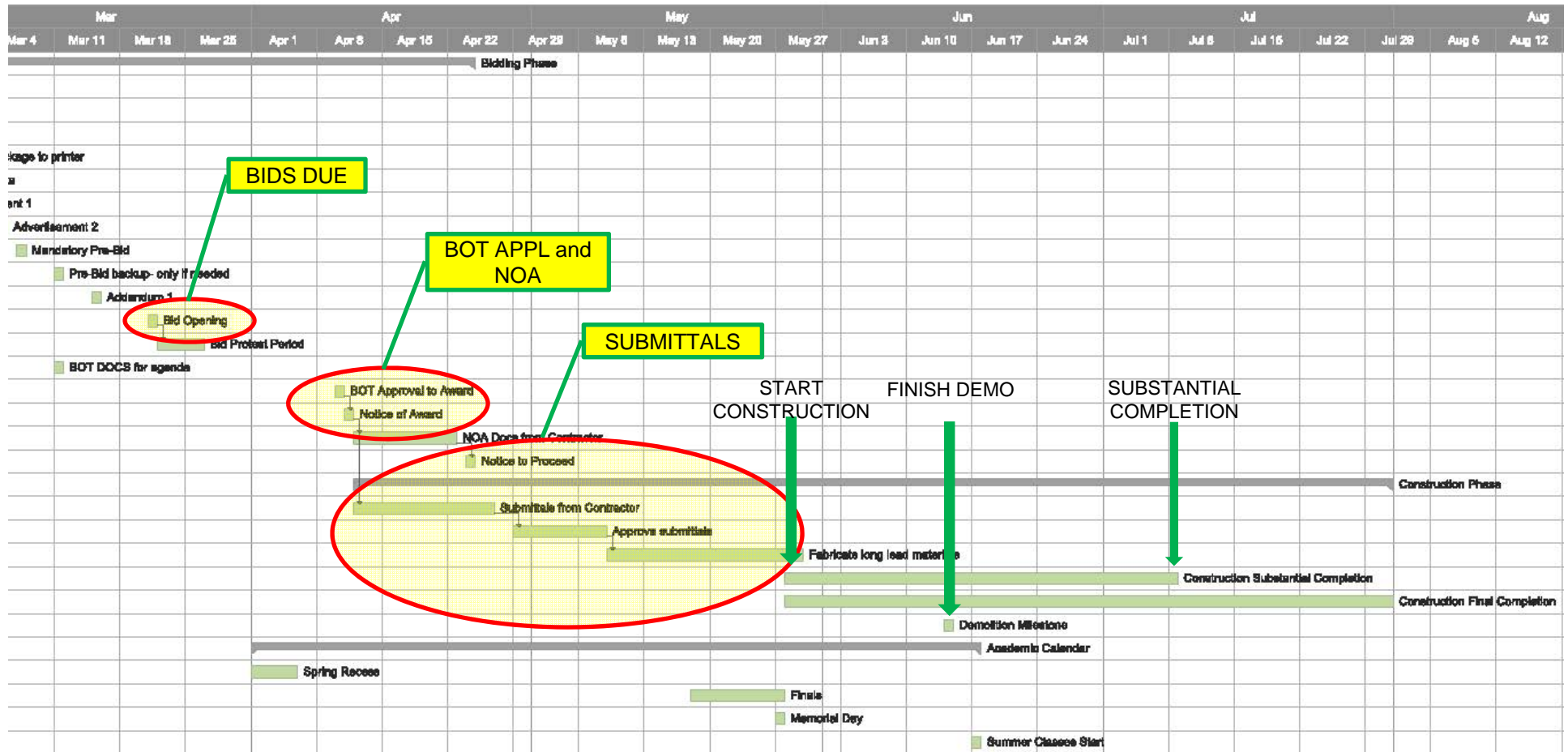




Bid delivery map



# PROJECT SCHEDULE



## Scope of Work



<b>Bid Protest Period:</b>	March 21-26, 2013
<b>BOT Approval of Contract Award</b>	April 10, 2013
<b>Notice of Award</b>	April 11, 2013
<b>Contractor Docs due</b>	April 22, 2013
<b>Notice to Proceed</b>	April 24, 2013



## Bid & Award Schedule





**Submittals due by Friday April 26, 2013 (NOA + 15 CD)**

**Mobilize on-site no earlier than Tuesday May 28, 2013 (NTP + 34 CD)**

**Demolition completion - no later than June 14, 2013 (NTP + 51CD)**

**Substantial completion – no later than July 8, 2013 (NTP + 75 CD)**

**Final completion - no later than July 31, 2013 (NTP + 98 CD)**



## Construction Schedule



# Peter Hempel

# Bill Krill

## Swinerton Management and Consulting

### Project Overview

- Bid Form + docs
- Schedule
- Site access
- Parking
- Work hours
- Staging
- Protection of Public and property
- Signage



Scope of Work



# BID FORM

ITEM	DESCRIPTION	ESTIMATED QUANTITY	UNIT	UNIT PRICE	TOTAL
A.	<b>BASE BID</b> - All Work of Contract Documents other than Work separately provided for under other Bid items	1	<b>Lump Sum</b>	Na	\$
B.	<b>Owner's Allowance</b>	\$35,000	<b>Fixed</b>	Na	\$ 35,000.00
C.	<b>Alternate Item No. 1 – Roof Drains</b> Furnish and install new cast iron roof drains to replace ALL 15 existing drains at building 12. Adjust existing piping as required to connect drains.  (Note: Base bid Item A. already includes demolition and provision of strainers, clamping rings, and hardware, clean and test drain lines to achieve free flowing performance.)	1	<b>Lump Sum</b>	Na	TOTAL ADD \$
D.	<b>Alternate Item No. 2 – Tapered Insulation</b> Furnish and install ridged tapered insulation in lieu of wood cants/crickets at Building 12.	1	<b>Lump Sum</b>	Na	TOTAL ADD/DEDUCT \$
E.	<b>Unit Price #1 – Roof Drain</b> Furnish and install new cast iron roof drain to replace existing drain at Building 12. Adjust existing piping as required to connect drains.  <b>For bidding purposes AND basis of award, assume a quantity of ten (10) drains.</b>	10	<b>EA</b>	\$ _____ /EA	TOTAL ADD \$  (Total is Unit Price x 10)
F.	<b>Unit Price #2 – Walkpads</b> Furnish and install new walkpads at Building 12.  <b>For bidding purposes AND basis of award assume a quantity of Fifty 50 LF.</b>	50	<b>LF</b>	\$ _____ /LF	TOTAL ADD \$  (Total is Unit Price x 50)



## Bid Form

- Item A - Base bid
- Item B - Owner Allowance of \$35,000
- Item C – Alternate No.1 : Replace all B12 Roof Drains
- Item D – Alternate No.2 : Tapered insulation
- Item E – Unit Price #1: Roof drains x 10 ea
- Item F – Unit Price #2: Walkpads x 50 LF
- Basis of Award will be determined by sum of items A thru F

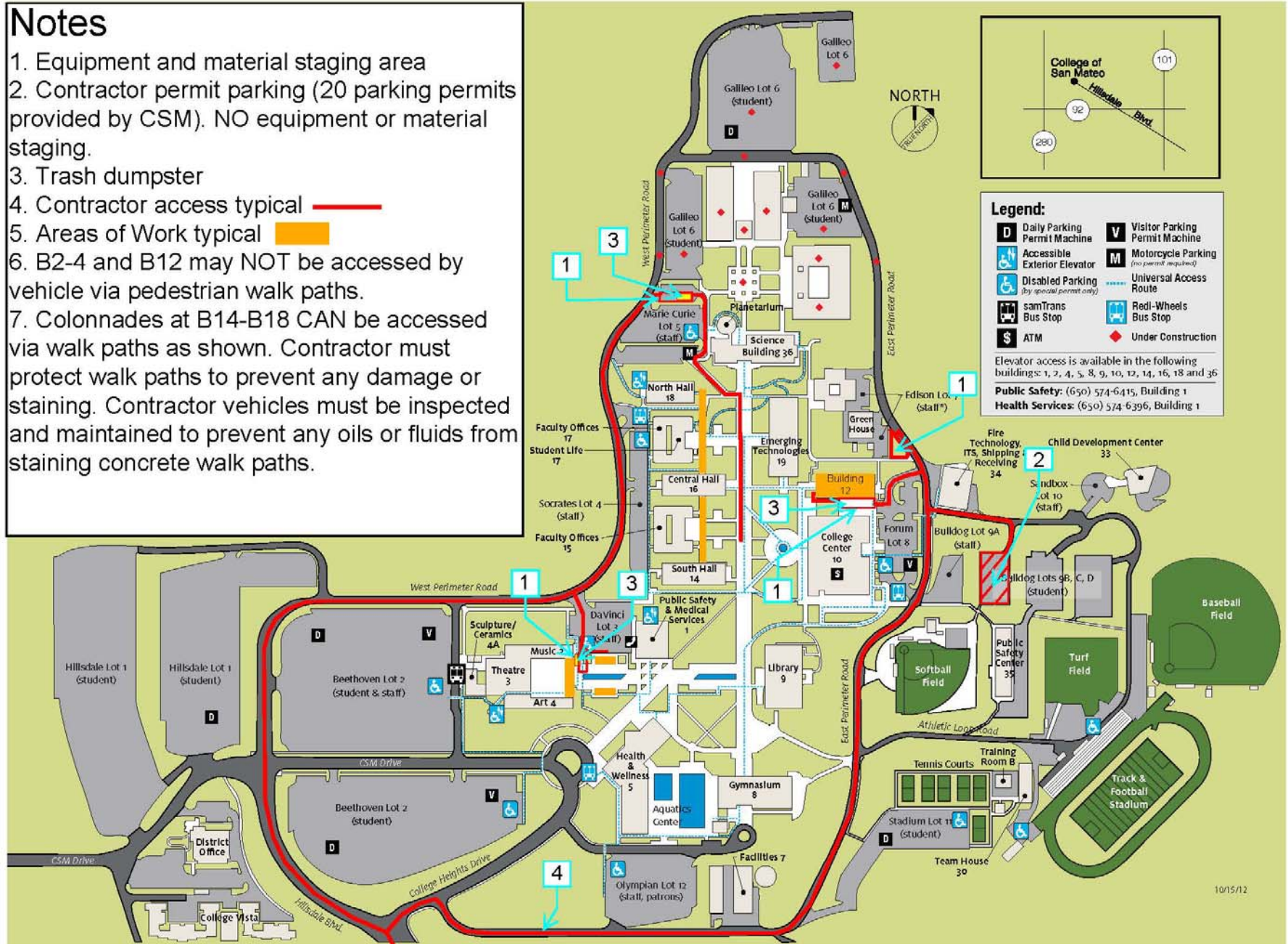


Scope of Work

EXHIBIT A-1 : SITE LOGISTICS PLAN - Access, Staging and Parking 2-14/2013

### Notes



1. Equipment and material staging area
2. Contractor permit parking (20 parking permits provided by CSM). NO equipment or material staging.
3. Trash dumpster
4. Contractor access typical ——
5. Areas of Work typical
6. B2-4 and B12 may NOT be accessed by vehicle via pedestrian walk paths.
7. Colonnades at B14-B18 CAN be accessed via walk paths as shown. Contractor must protect walk paths to prevent any damage or staining. Contractor vehicles must be inspected and maintained to prevent any oils or fluids from staining concrete walk paths.



Bid 86658 - CSM Building 12 and Colonnades Roof Replacement Project




NOTES

1. See spec. 01 58 00 for signage 
2. Fence 


Sensitive landscape area - OFF LIMITS



Ladder (optional) or use stair tower



Ladder-optional



Emergency exit only during construction



Fence closing off walk




2

1

3

Stair tower-bidders option



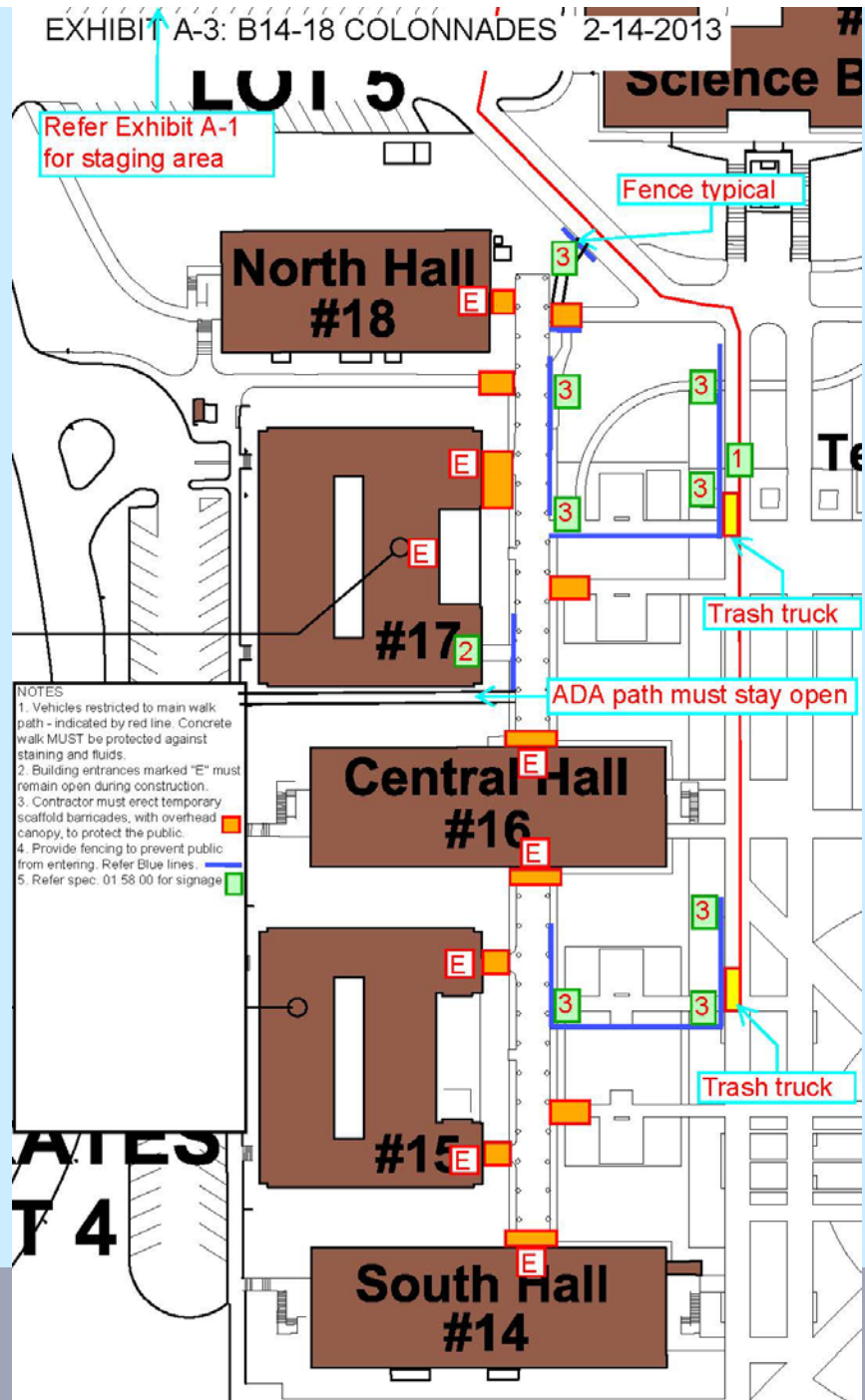
Dumpster



OFF LIMITS - ACCESS TO B10



EXHIBIT A-3: B14-18 COLONNADES 2-14-2013



Refer Exhibit A-1 for staging area

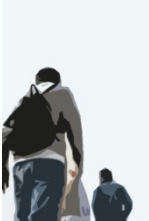
Fence typical

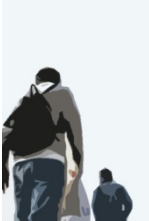
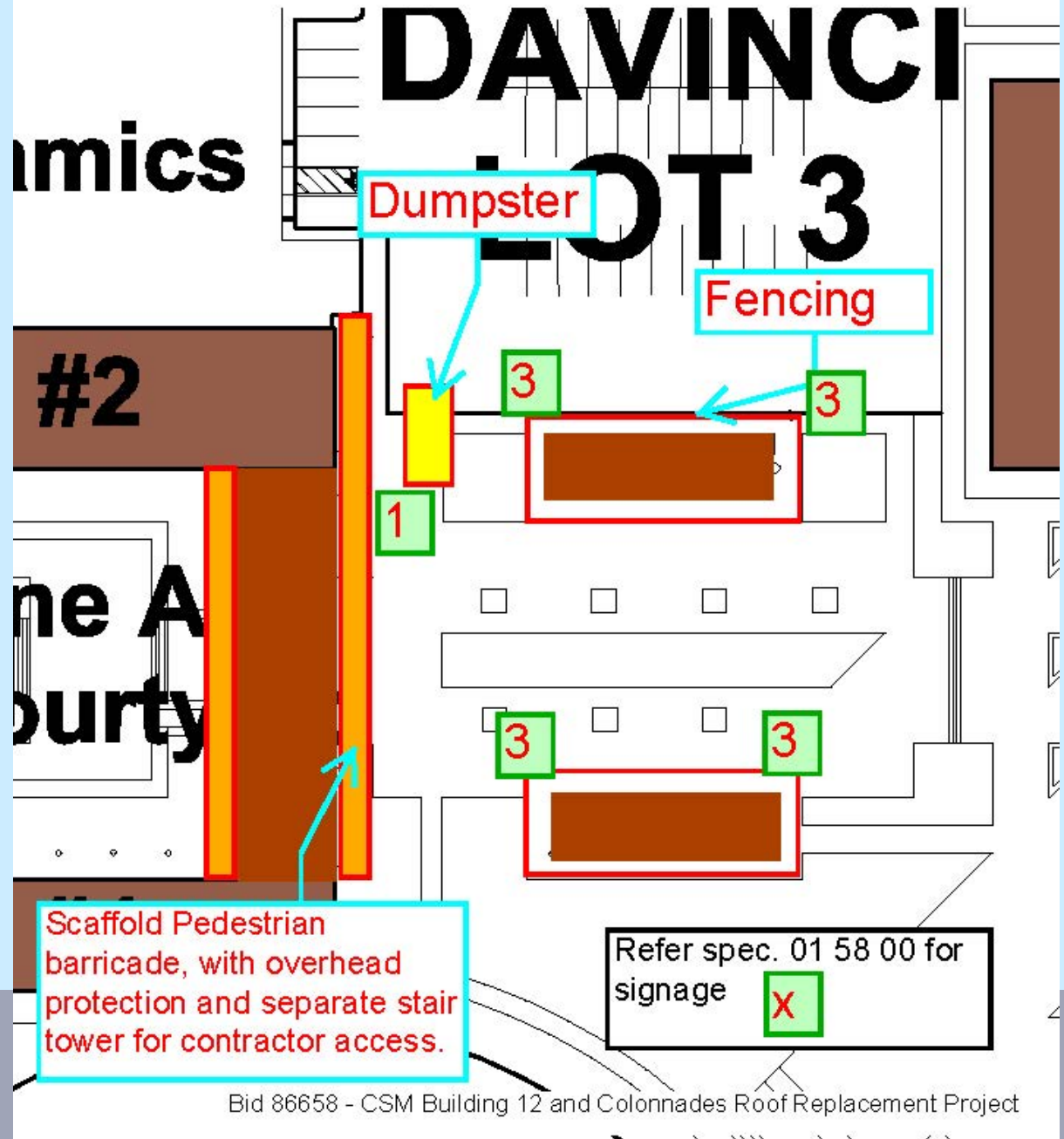
Trash truck

ADA path must stay open

Trash truck

- NOTES
1. Vehicles restricted to main walk path - indicated by red line. Concrete walk MUST be protected against staining and fluids.
  2. Building entrances marked "E" must remain open during construction.
  3. Contractor must erect temporary scaffold barricades, with overhead canopy, to protect the public.
  4. Provide fencing to prevent public from entering. Refer Blue lines.
  5. Refer spec. 01 58 00 for signage







# Rob Worthing

## Allana Buick and Bers

### Project Overview

- Contract Documents
- Submittals
- Scope overview
- Hazmat asbestos abatement included in scope
- Pre-Construction Meeting
- QAQC

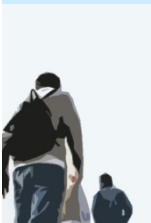


Scope of Work





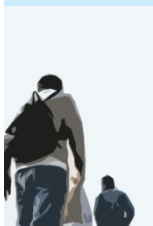
- *College of San Mateo is an Occupied Campus located with close adjacent neighbors*
  - *Avoid noise, light and dust across the canyon*
- *College Educational Mission is Paramount*
- *Construction logistics must accommodate the College’s schedule, events and priorities*



# Occupied Campus Logistics



- Communication with Construction Manager
- Weekly Owner/Architect/Contractor Meeting
- Site Utilization Plan – Weekly Updates
- Protect existing utilities
  - Study As-Builts
  - Field Review with SMC/CSM
  - Protect Faculty, Staff and Students

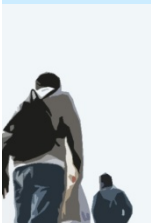


# Occupied Campus Logistics



## Safety

- Site Perimeter Enclosure Fencing
- Pedestrian overhead protection scaffolding
- Site Safety Signage
- GC Point of Contact On Site at all times
- Emergency Vehicle through road access  
must be maintained at all times



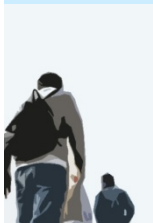
# Occupied Campus Logistics



- Project **Contract Documents** are available at ARC/ Elite reprographics for a fee.
- Project **Contract Documents and Reference Documents (Including Hazardous Waste Reports)** are also available at the District project website:

<https://sharepoint.smccd.edu/SiteDirectory/CPD/CPD%20Downloads/Forms/AllItems.aspx?RootFolder=%2fSiteDirectory%2fCPD%2fCPD%20Downloads%2fCSM%2fCSM%20B12%20Roofing%20Project&FolderCTID=&View=%7b6FB13571%2dA71B%2d415B%2d9358%2d079D559BE0B5%7d>

<http://www.smccd.edu/accounts/smccd/departments/facilities/>



# Bid Documents



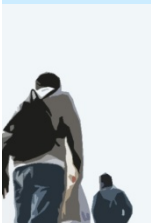


## *Questions & Answers*

*Thank You*

for Your Interest in the SMCCCD  
Capital Improvement Program!

<http://www.smccd.edu/accounts/smccd/departments/facilities/>



# Questions & Answers