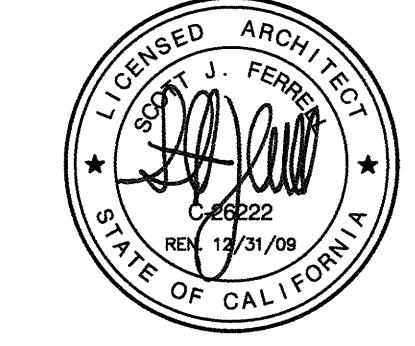


McCarthy Building Companies, Inc.
343 Sansome Street, 14th Floor
San Francisco, California 94104
P 415 364-1339
F 415 397-5999



IDENTIFICATION STAMP
DIV. OF THE STATE ARCHITECT
OFFICE OF REGULATION SERVICE

APPL. # 01-110097

AC: A FL: S SS: D.M.L.

DATE: APR 09 2009

FILE NUMBER: 41-C1

This set of other project documents and all files, sections and design documents herein are instruments of service. All project documents are the registered property of LPA, Inc. (LPA) and shall remain the property of LPA, Inc. until the project is complete. LPA hereby grants license to the recipient of these documents for their use in the project for which they were prepared. LPA shall not be held responsible for any reproduction or modification of these documents without the written consent of LPA. LPA shall not be held responsible for any errors or omissions in these documents. LPA shall not be held responsible for any damage or injury resulting from the use of these documents. LPA shall not be held responsible for any delay or interruption of the project caused by the use of these documents. LPA shall not be held responsible for any cost or expense incurred by the recipient of these documents. LPA shall not be held responsible for any liability or legal action resulting from the use of these documents.

© Copyright 2008

College of San Mateo
Site Package
San Mateo, CA

Developed for
San Mateo County Community College District

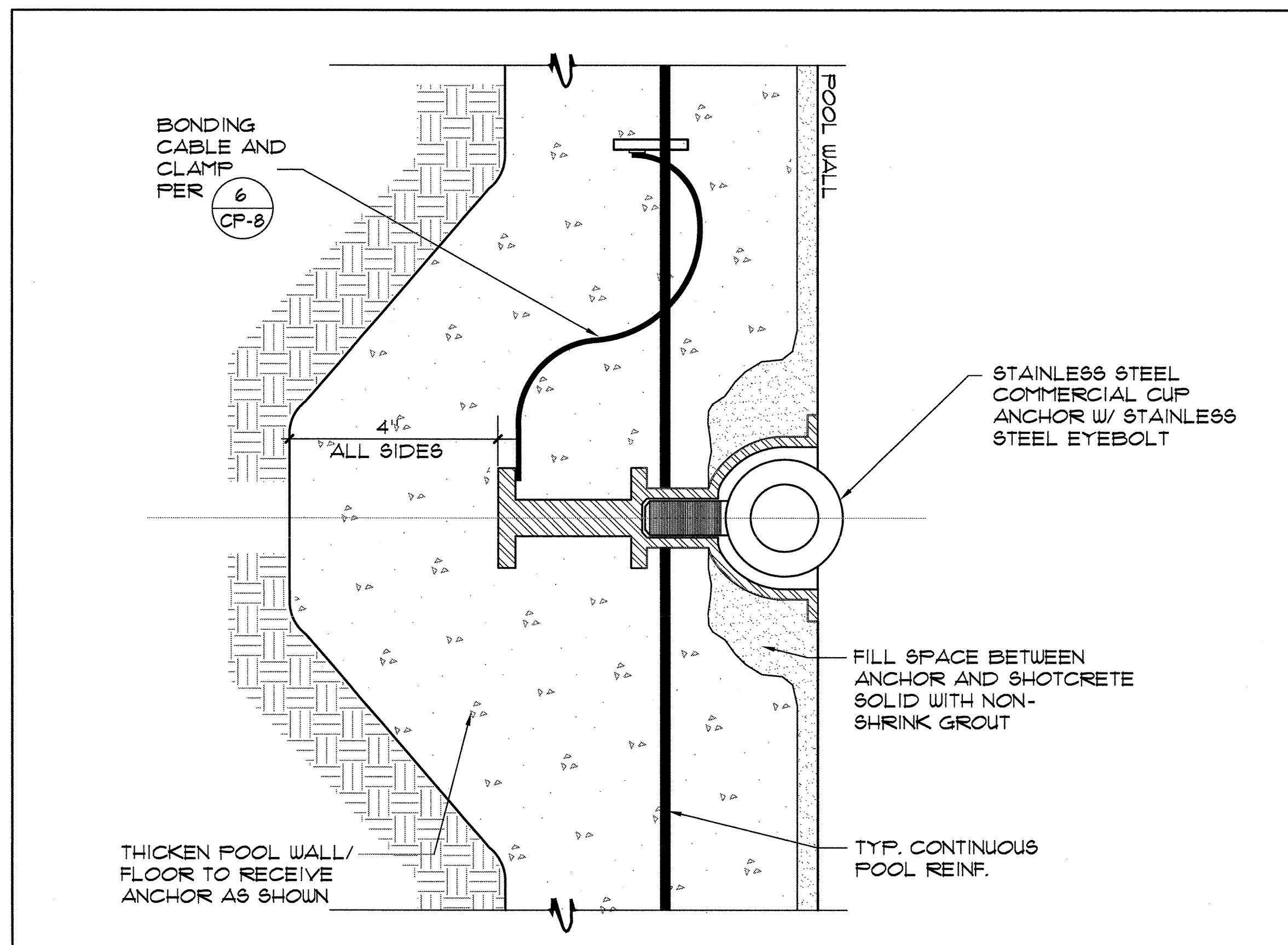
Revision	Description	Date

Revision	Description	Date

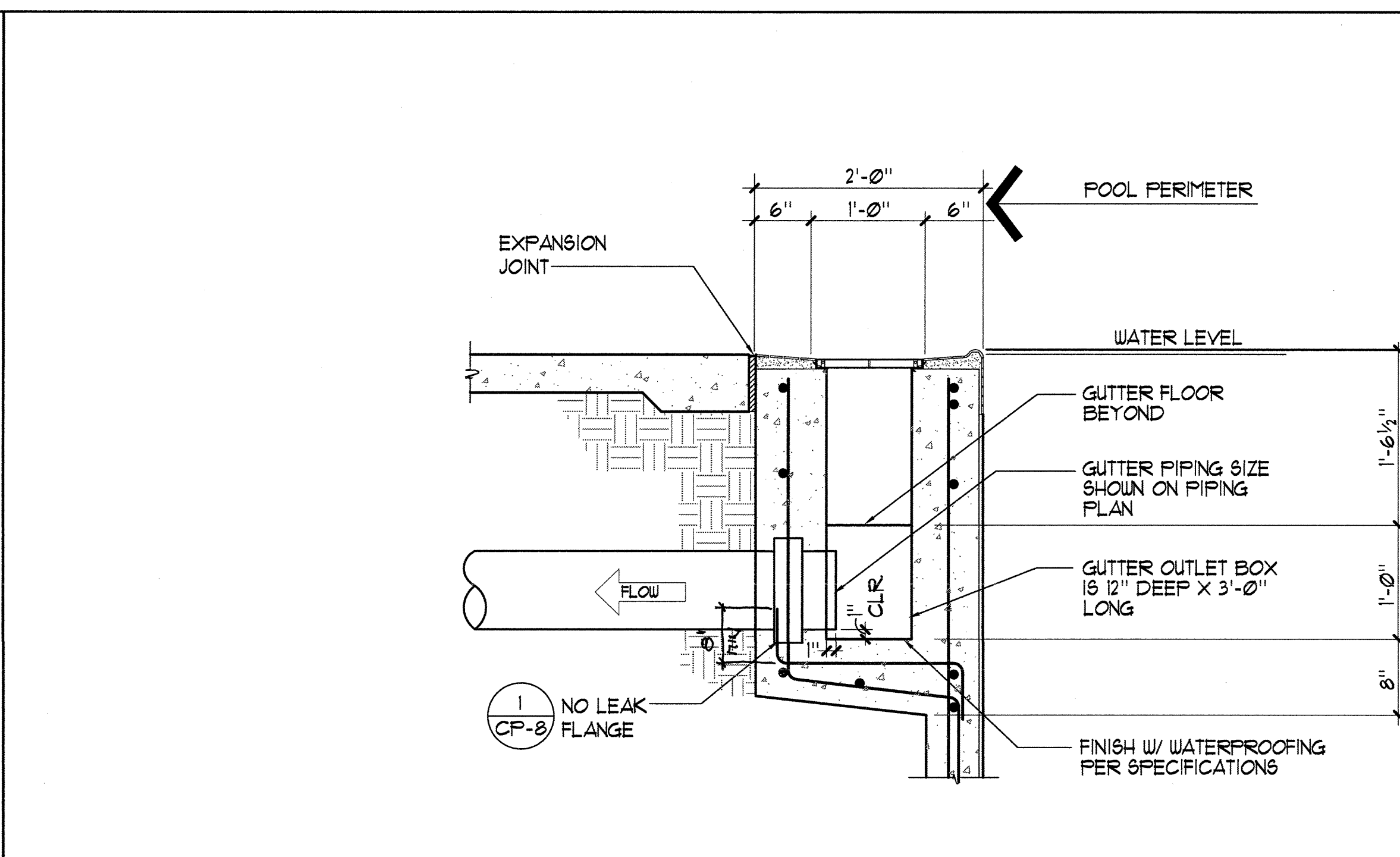
Job No.	27082.30
Date	08 APRIL 2009
Drawn by	NFC
Checked by	SJF
Scale	AS NOTED

DETAILS

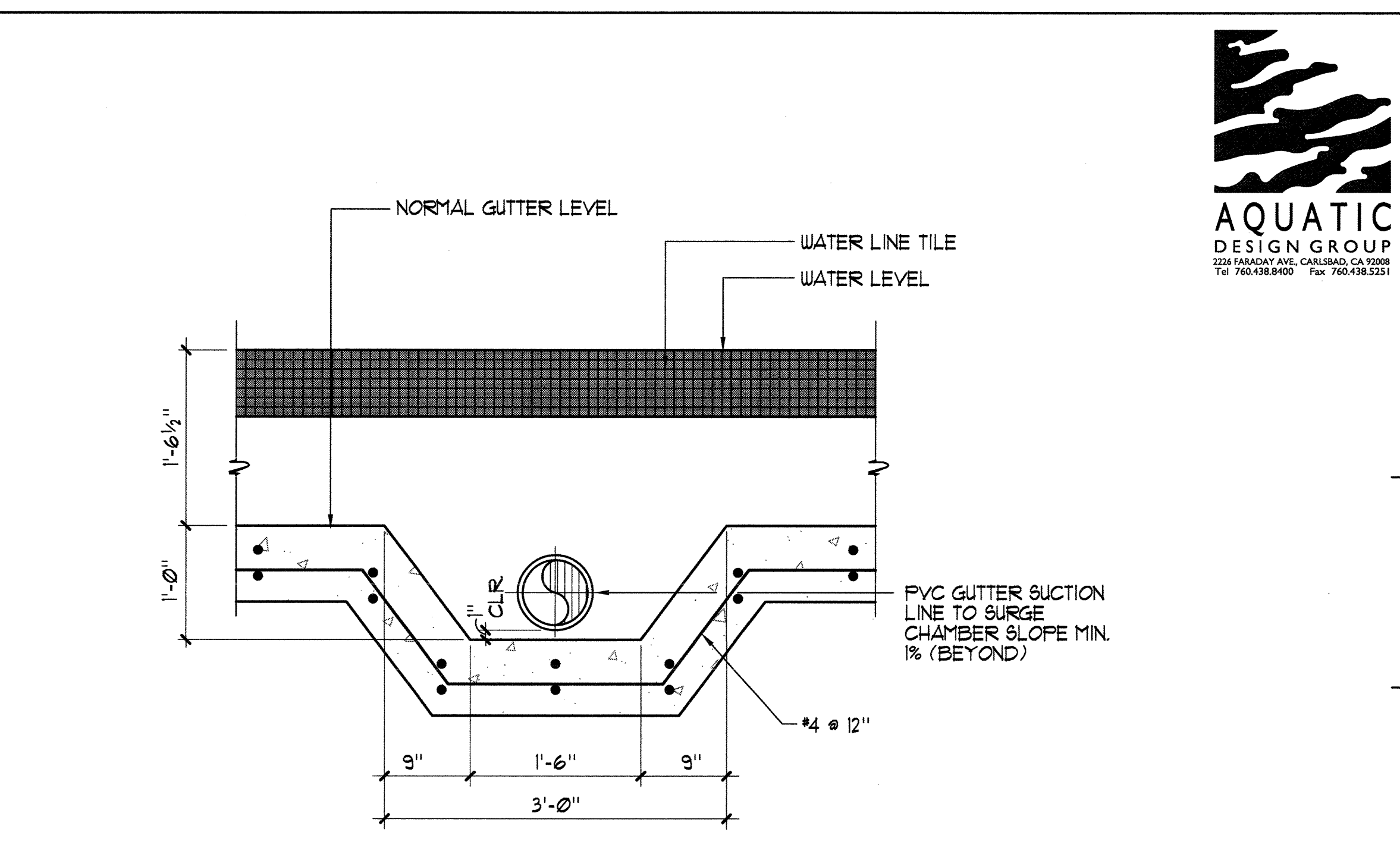
SP-5



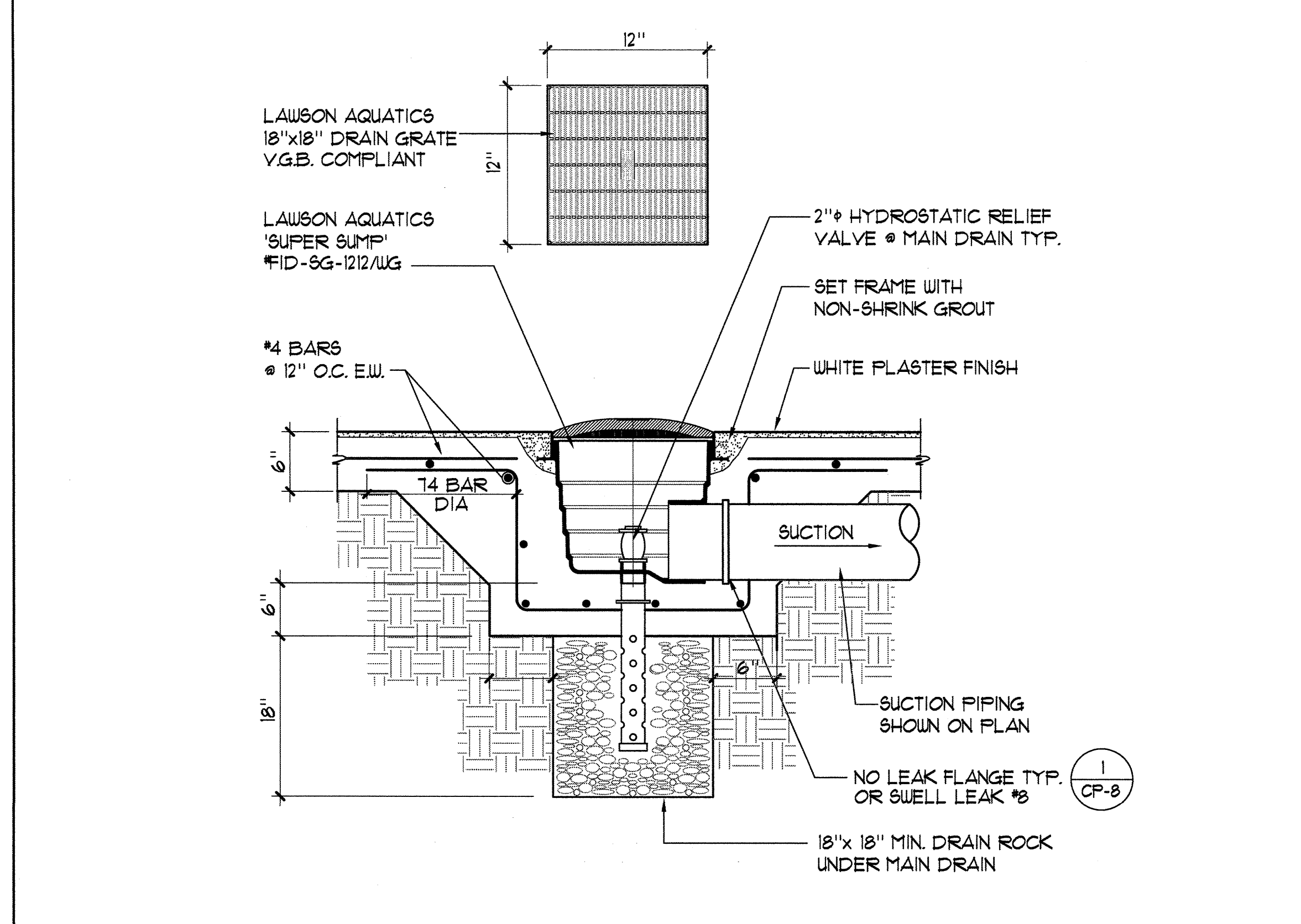
1 HEAVY EYEBOLT ANCHOR 1/2" x 1'-0"



2 GUTTER OUTLET 1" x 1'-0"



ELEVATION



3 MAIN DRAIN NO SCLAE

