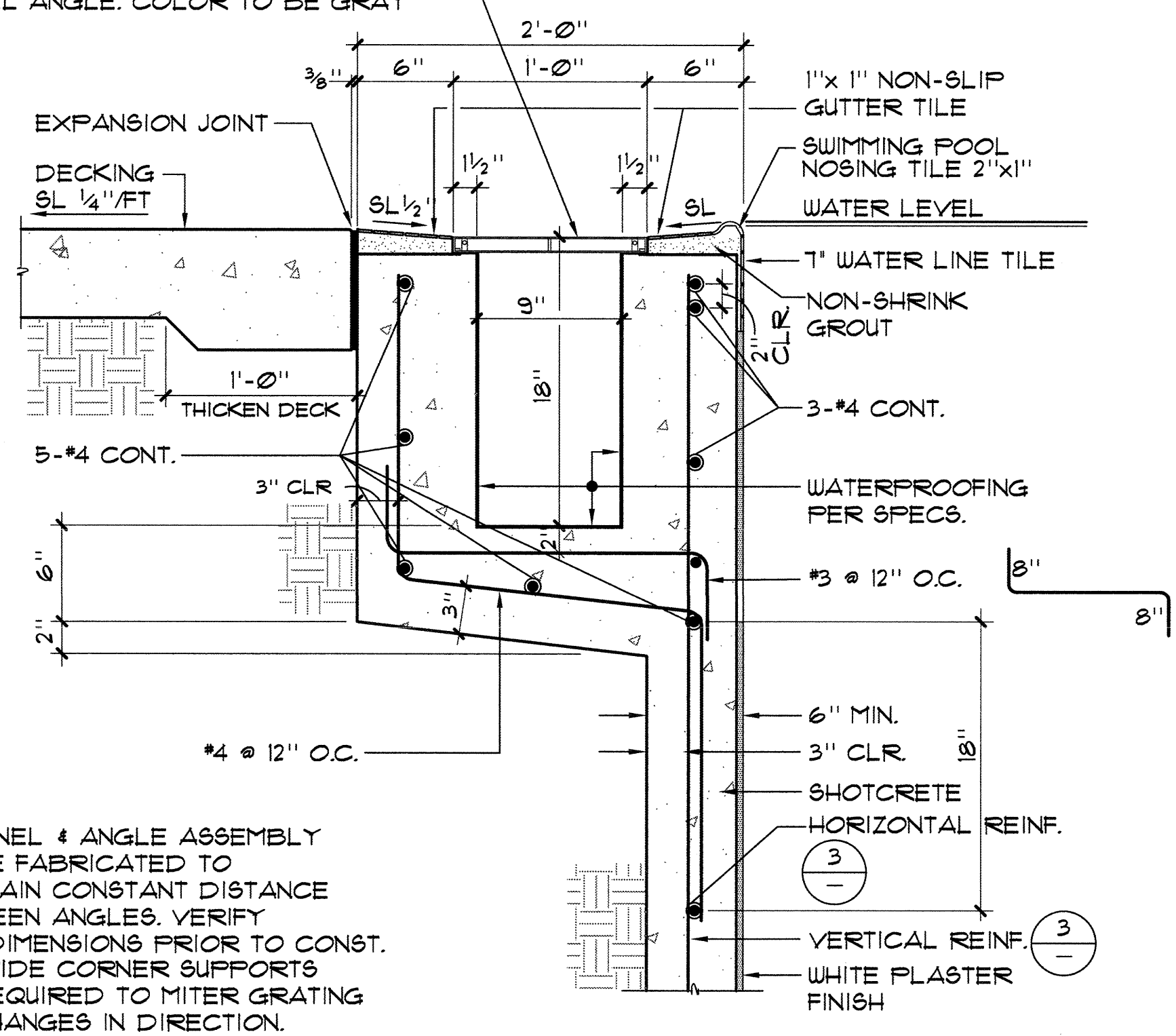
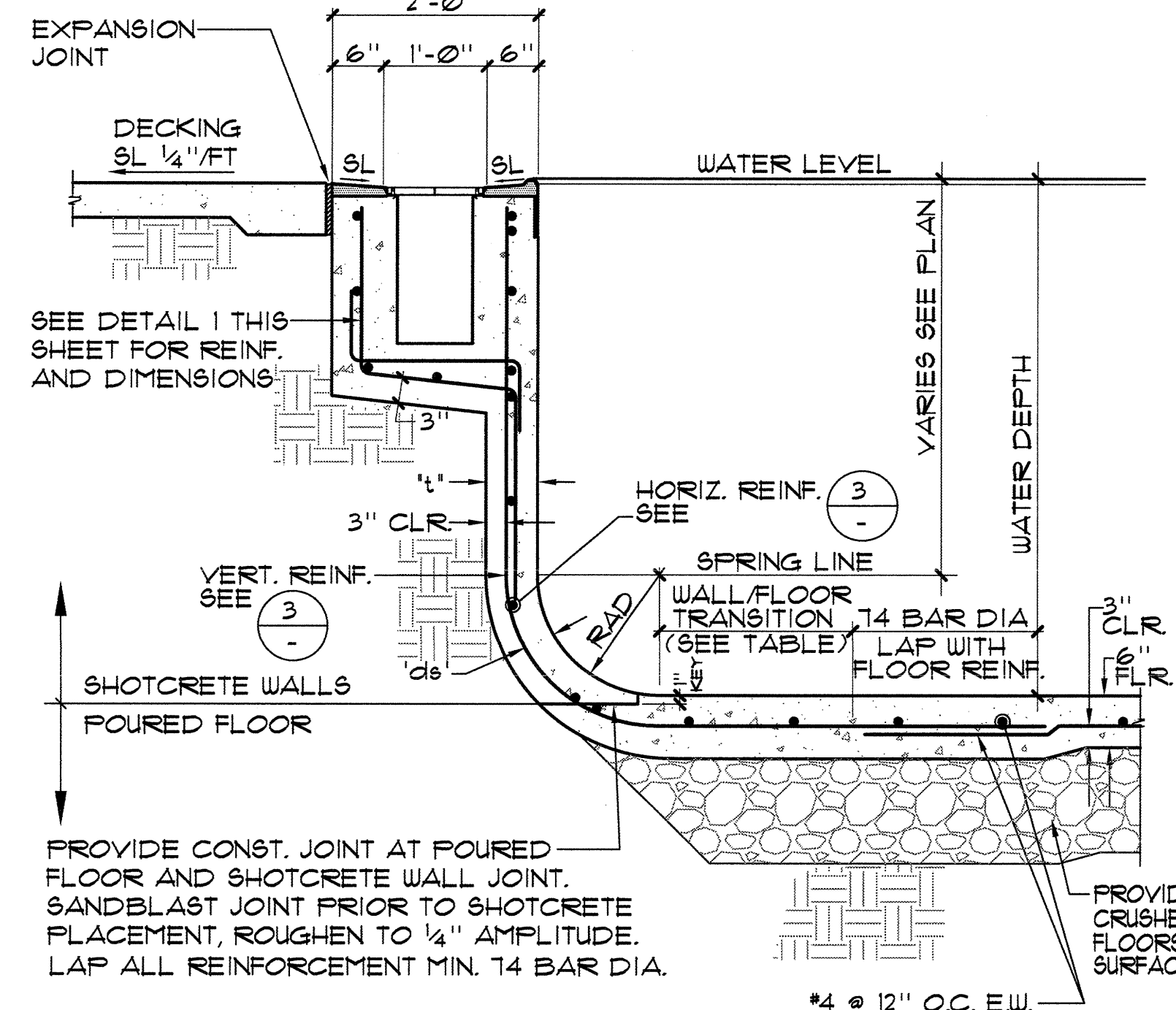


GRATING TO BE 'GRATE TECHNOLOGIES INC.'
1" VINYL U.V. GRATING W/ NON-SLIP SURFACE
AND CHANNEL ANGLE. COLOR TO BE GRAY



*NOTE:
CHANNEL & ANGLE ASSEMBLY TO BE FABRICATED TO MAINTAIN CONSTANT DISTANCE BETWEEN ANGLES. VERIFY ALL DIMENSIONS PRIOR TO CONST. PROVIDE CORNER SUPPORTS AS REQUIRED TO MITER GRATING AT CHANGES IN DIRECTION.

1 TYPICAL GUTTER DETAIL 1" = 1'-0"



PROVIDE 12" MIN 3/4" CLEAN CRUSHED ROCK UNDER POOL FLOORS FOR STABLE WORKING SURFACE.

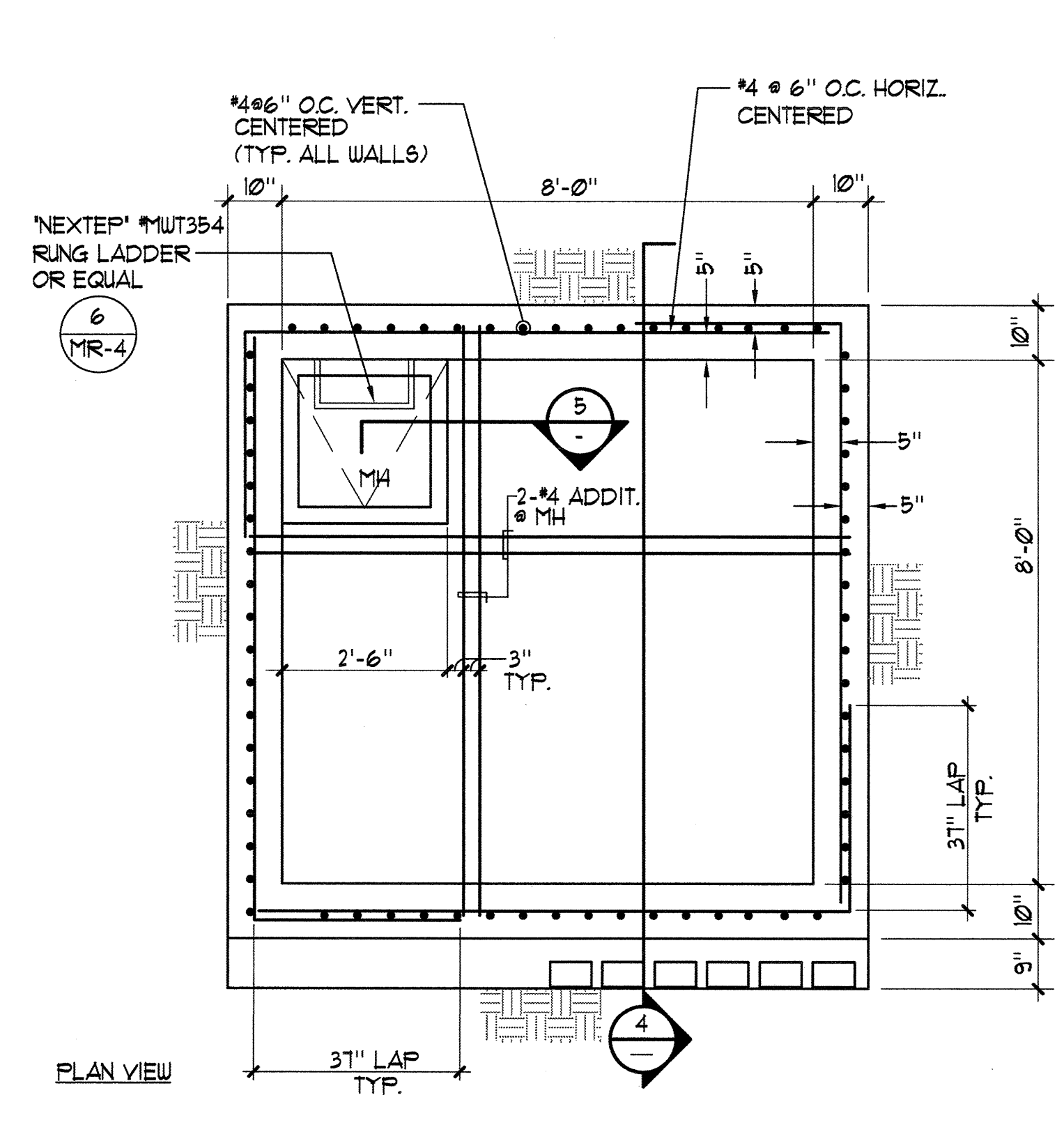
2 POOL WALL 3'-6" TO 5'-0" 3/4" = 1'-0"

REINFORCEMENT TABLE					
WATER DEPTH	1' 'dia'	RADIUS	VERTICAL REINF.	HORIZONTAL REINF.	TRANSITION TO FLOOR REINF. BEYOND END RADIUS
3'-6" TO 5'-0"	6"	3"	6" TO 18"	#4 @ 8" O.C.	#4 @ 12" O.C.

- CONCRETE NOTES:
- THE MINIMUM ULTIMATE COMPRESSIVE STRENGTH AT 28 DAYS POOL = 3000 PSI
SLAB-ON-GRADE = 3000 PSI
MAX. WATER TO CEMENT RATIO = 0.55
 - CONTINUOUS INSPECTION BY AN D.S.A. APPROVED INSPECTOR IS REQUIRED OF ALL CONCRETE PLACEMENT.
 - ALL CEMENT USED SHALL CONFORM TO A.S.T.M. C-150.
 - FINE AND COARSE AGGREGATE SHALL CONFORM TO A.S.T.M. C-33. MAXIMUM SIZE OF AGGREGATE TO BE 1".
 - SHOTCRETE MIX DESIGNS SHALL BE PER CBC SECTION 193A.2.
 - SHOTCRETE SHALL BE TESTED AND INSPECTED PER SECTION 193A.5 AND 193A.10.
 - ANCHOR BOLTS, ANCHORS, DOUELS, INSERTS, ETC. SHALL BE SECURELY TIED IN PLACE PRIOR TO PLACING OF SHOTCRETE.
 - ALL REINFORCEMENT WITHIN SHOTCRETE SHALL MAINTAIN MINIMUM 2" CLEAR NON-CONTACT SPACES.
 - THE FILM OF LAITANCE WHICH FORMS ON THE SURFACE OF THE SHOTCRETE SHALL BE REMOVED WITHIN APPROXIMATELY TWO HOURS AFTER APPLICATION BY BRUSHING WITH A STIFF BRUSH. IF THIS IS NOT REMOVED WITHIN TWO HOURS, IT SHALL BE REMOVED BY THOROUGH WIRE BRUSHING OR SAND BLASTING. CONSTRUCTION JOINTS OVER EIGHT HOURS OLD SHALL BE THOROUGHLY CLEANED WITH AIR AND WATER PRIOR TO RECEIVING SHOTCRETE.
 - ALL REINFORCING SHALL BE ASTM A-615, GRADE 60, UNLESS OTHERWISE NOTED TO BE GRADE 40. MIN. LAPS SHALL BE 14 BAR DIA.

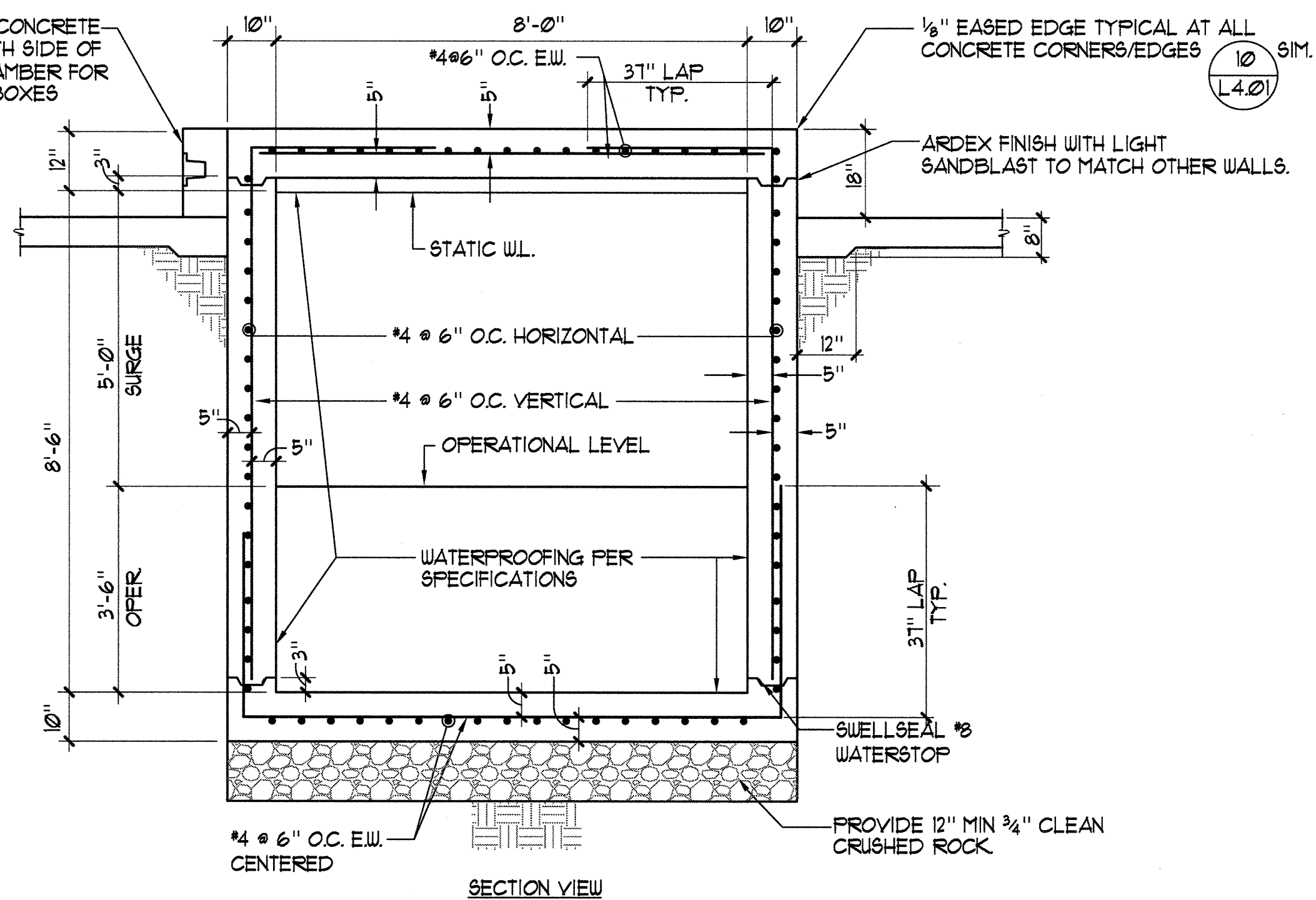
- SHOTCRETE NOTES:
- THE MINIMUM ULTIMATE COMPRESSIVE STRENGTH AT 28 DAYS POOL WALLS = 3000 PSI
 - CONTINUOUS INSPECTION BY AN D.S.A. APPROVED INSPECTOR IS REQUIRED OF ALL SHOTCRETE PLACEMENT.
 - ALL CEMENT USED SHALL CONFORM TO A.S.T.M. C-150.
 - FINE AND COARSE AGGREGATE SHALL CONFORM TO A.S.T.M. C-33. MAXIMUM SIZE OF AGGREGATE TO BE 1".
 - SHOTCRETE MIX DESIGNS SHALL BE PER CBC SECTION 193A.2.
 - SHOTCRETE SHALL BE TESTED AND INSPECTED PER SECTION 193A.5 AND 193A.10.
 - ANCHOR BOLTS, ANCHORS, DOUELS, INSERTS, ETC. SHALL BE SECURELY TIED IN PLACE PRIOR TO PLACING OF SHOTCRETE.
 - ALL REINFORCEMENT WITHIN SHOTCRETE SHALL MAINTAIN MINIMUM 2" CLEAR NON-CONTACT SPACES.
 - THE FILM OF LAITANCE WHICH FORMS ON THE SURFACE OF THE SHOTCRETE SHALL BE REMOVED WITHIN APPROXIMATELY TWO HOURS AFTER APPLICATION BY BRUSHING WITH A STIFF BRUSH. IF THIS IS NOT REMOVED WITHIN TWO HOURS, IT SHALL BE REMOVED BY THOROUGH WIRE BRUSHING OR SAND BLASTING. CONSTRUCTION JOINTS OVER EIGHT HOURS OLD SHALL BE THOROUGHLY CLEANED WITH AIR AND WATER PRIOR TO RECEIVING SHOTCRETE.
 - ALL REINFORCING SHALL BE ASTM A-615, GRADE 60, UNLESS OTHERWISE NOTED TO BE GRADE 40. MIN. LAPS SHALL BE 14 BAR DIA.

3 REINFORCEMENT TABLE

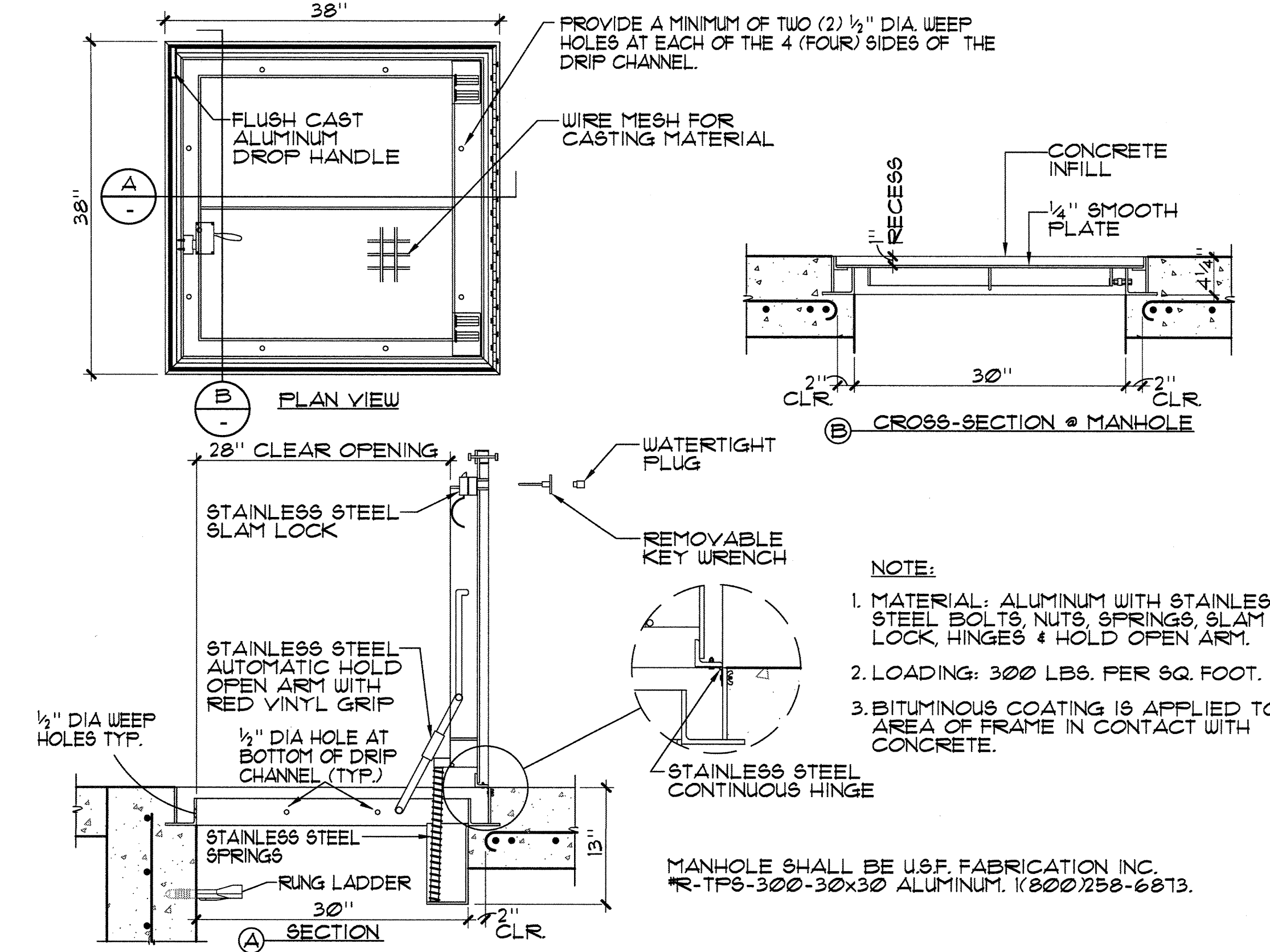


LEGEND
O.C. = ON CENTER
E.W. = EACH WAY

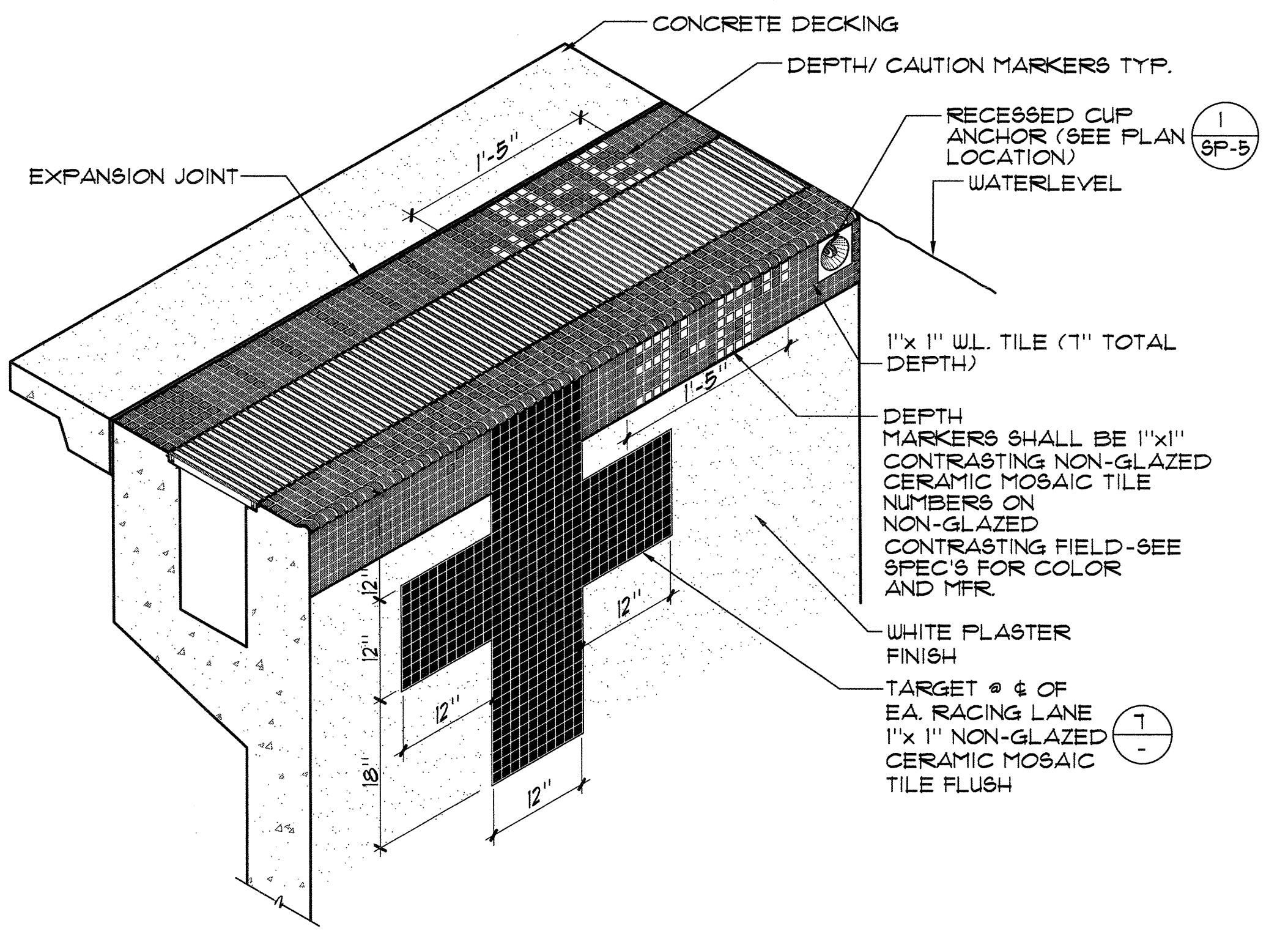
INTEGRAL CONCRETE WALL NORTH SIDE OF SURGE CHAMBER FOR JUNCTION BOXES



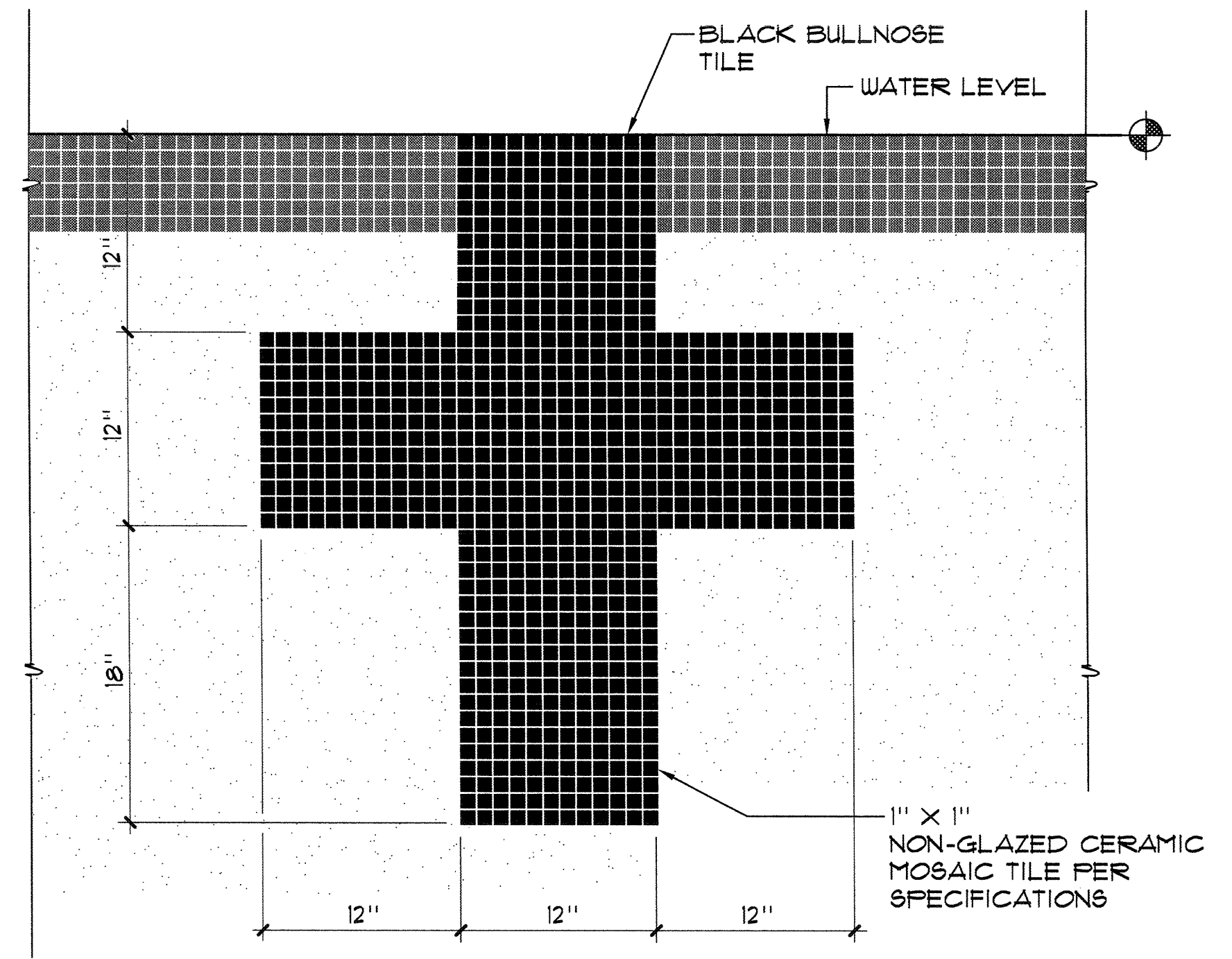
4 SURGE CHAMBER 1/2" = 1'-0"



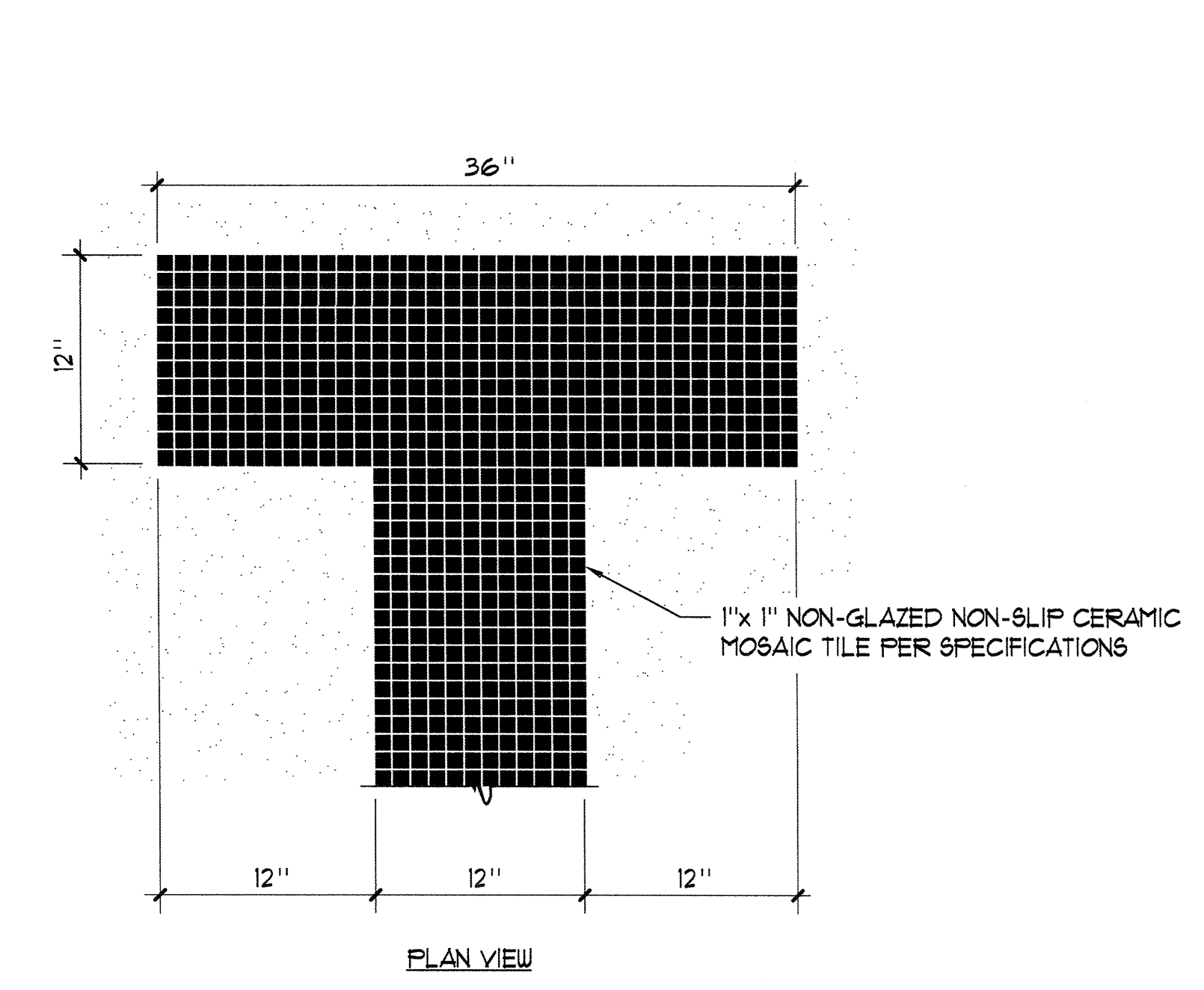
5 SURGE CHAMBER MANHOLE 1" = 1'-0"



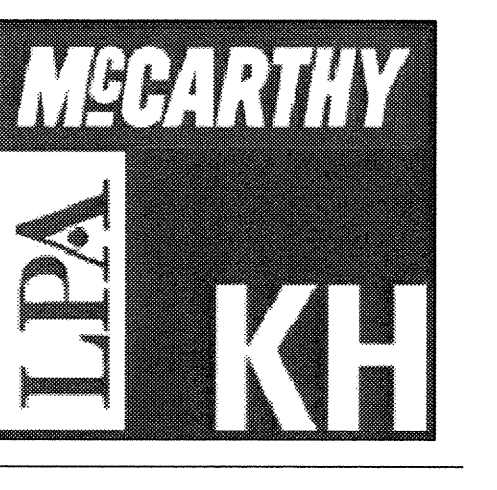
6 RIM FLOW GUTTER PERSPECTIVE NO SCALE



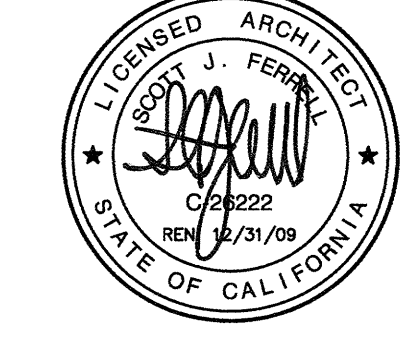
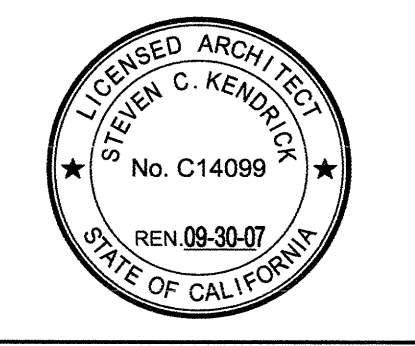
7 END WALL TARGETS 1/2" = 1'-0"



8 RACING LANE LINE 1/2" = 1'-0"



McCarthy Building Companies, Inc.
343 Sansome Street, 14th Floor
San Francisco, California 94104
P 415 364-1339
F 415 397-5999



IDENTIFICATION STAMP
DIV. OF THE STATE ARCHITECT
OFFICE OF REGULATION SERVICE
APPL. #: 01-110097
AC: J. M. FERRELL
FLS: SS, D.M.
DATE: APR 09 2009
FILE NUMBER: 41-C1

This set of other project documents and all sheets, conditions and changes incorporated herein are statements of service, and shall be used for the project only. No part of this agreement shall be used for any other project without the written consent of LPA, Inc. LPA, Inc. shall not be held responsible for any errors or omissions in this document. LPA, Inc. shall not be held responsible for any errors or omissions in this document. LPA, Inc. shall not be held responsible for any errors or omissions in this document. LPA, Inc. shall not be held responsible for any errors or omissions in this document.

College of San Mateo
Site Package
San Mateo, CA
Developed for
San Mateo County Community College District

Date	Revision/Description

Date	Revision/Description
19 SEPT. 2008	DSA SUBMITTAL
09 APRIL 2009	DSA FINAL

Job No.	27082.30
Date	09 APRIL 2009
Drawn by	NFC
Checked by	SJF
Scale	AS NOTED

DETAILS