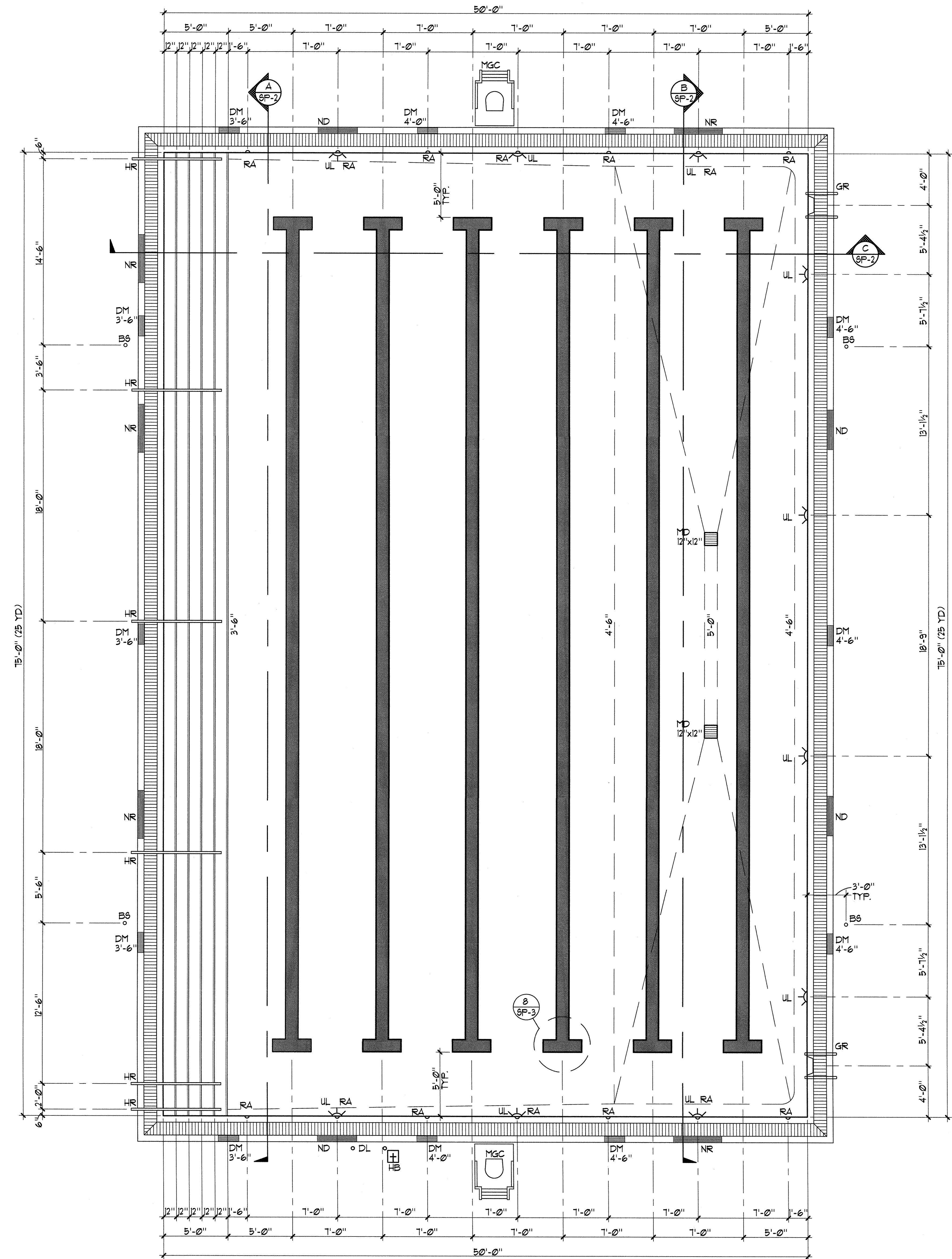


The seal of other project documents out of issue, whether or not they are incorporated herein, are not to be used. All project documents on the registered property of LPA, Inc. (LPA) are not to be used or reproduced in any project or program except as described in the contractual agreement between LPA and Client. LPA hereby certifies that the information contained herein is true and correct to the best of its knowledge and belief and that it is not aware of any information that would cause it to believe that the information is not true and correct. LPA and LPA's Consultants shall be held liable for any errors or omissions in the information provided herein and shall not be held liable for any errors or omissions in the information provided herein.

Project documents describe design ideas and are not a representation of an actual or existing condition. LPA and LPA's Consultants shall be held liable for any errors or omissions in the information provided herein and shall not be held liable for any errors or omissions in the information provided herein.

© Copyright 2008

College of San Mateo  
 Site Package  
 San Mateo, CA  
 Developed for  
 San Mateo County Community College District



**SWIMMING POOL DATA**

SURFACE AREA	=	3,754 SQ. FT.
PERIMETER	=	250 FT.
DEPTH	=	3'-6" TO 5'-0"
VOLUME	=	112,349 GAL.
6 HR TURNOVER	=	3/2 GPM

**LEGEND**

MD	=	MAIN DRAIN	3	SP-5
GR	=	GRABRAIL	1	SP-4
DM	=	DEPTH MARKER	2	SP-4
NR	=	'NO RUNNING'	3	SP-4
ND	=	'NO DIVING'	3	SP-4
RA	=	ROPE ANCHOR	1	SP-5
MGC	=	MOVEABLE GUARD CHAIR	6	CP-6
BS	=	BACKSTROKE STANCHION	8	CP-6
UL	=	UNDERWATER LIGHT	3	CP-8
DL	=	DISABLED LIFT	6	SP-4
HB	=	HOSE BIBB	4	CP-4
HR	=	HANDRAIL	5	SP-4

Revision	Description	Date

Revision	Description	Date

Job No.	2708230
Date	09 APRIL 2009
Drawn by	NFC
Checked by	SJF
Scale	1/4"=1'-0"

SWIMMING POOL LAYOUT PLAN

SP-1

SWIMMING POOL LAYOUT PLAN

1/4"=1'-0"

