

GENERAL NOTES:

- SEE ARCH., M.E., & P. DRAWINGS FOR SIZE AND LOCATIONS OF OPENINGS.
- IF X IS NOT GREATER THAN 1'-0" ANGLE MAY BE OMITTED ON SIDE CLOSEST TO BEAM.
- OPENING SHALL BE BLOCKED OUT PRIOR TO CONCRETE POUR AND DECK LEFT INTACT UNTIL 14 DAYS AFTER CONCRETE POUR.
- OPENING DIMENSION SHALL BE CONFINED TO CLEAR SPACE BETWEEN EDGES OF ADJACENT BEAMS.
- PROVIDE TRIM BAR AROUND OPENING PER TYPICAL DETAILS.

BOTTOM ANGLE METHOD NOTES:

- ANGLES MAY BE ATTACHED BY DETAIL 1, 2, OR 3 PROVIDED THEY ARE INSTALLED BEFORE DECK IS CUT.
- AT CONTRACTOR'S OPTION, DECK MAY BE CUT AHEAD OF CONCRETE POUR PROVIDED THAT THE ANGLES ARE INSTALLED BY DETAIL 1 OR 2 BEFORE THE DECK IS CUT. ANGLES SHALL BE L4x4x3/8.

TOP ANGLE METHOD NOTES:

- CONCRETE FILL MUST BE 4" MIN. TO USE TOP ANGLE REINFORCEMENT.
- AT CONTRACTOR'S OPTION, DECK MAY BE CUT AHEAD OF CONCRETE POUR PROVIDED THAT THE ANGLES ARE INSTALLED BEFORE THE DECK IS CUT. ANGLES SHALL BE REPLACED BY FLAT HSS3x1 1/2 x1/8.

TYPICAL REINFORCED DECK OPENING WITH OR WITHOUT CONCRETE FILL

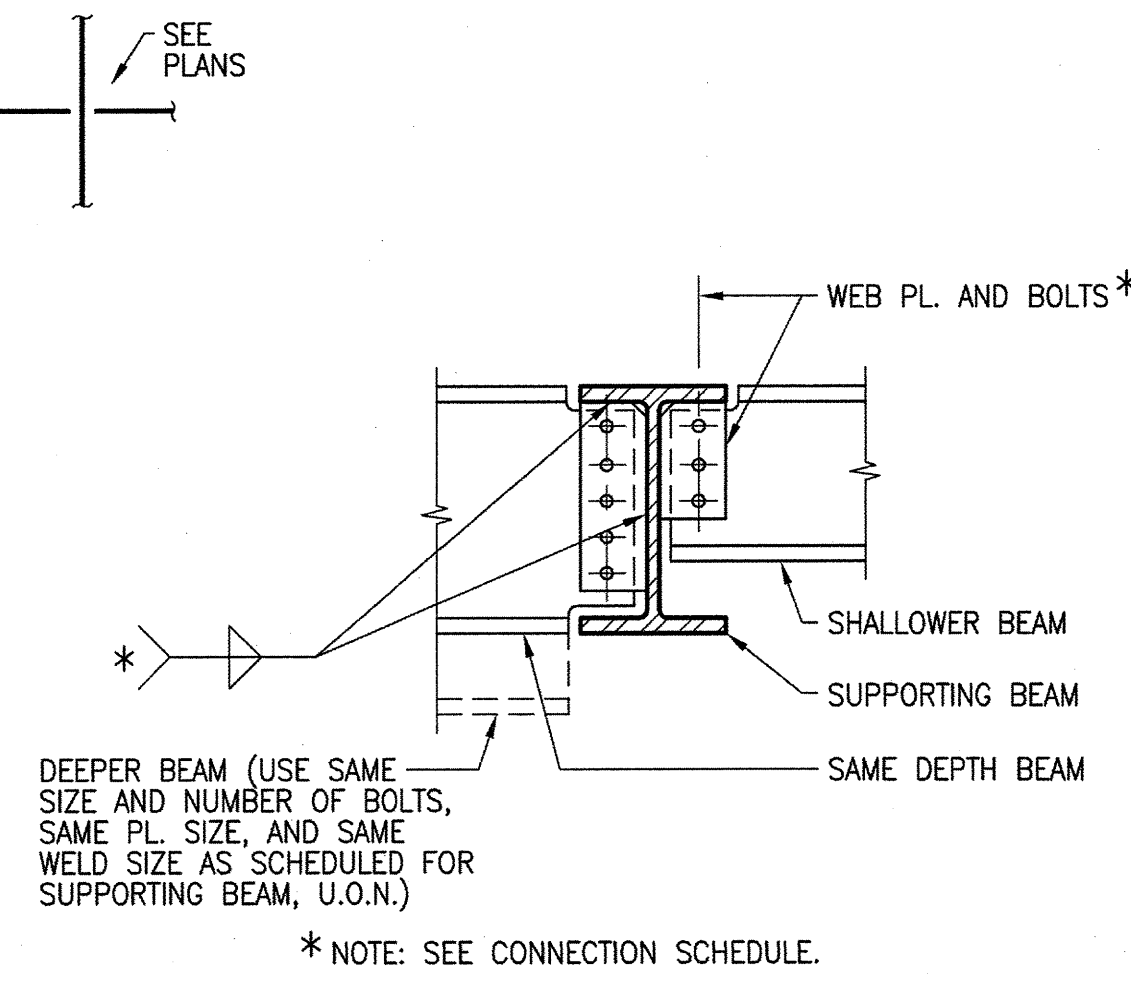
18
S7.1

OPENING PATTERN	CLASSIFICATION/DETAIL
	UNREINFORCED OPENING SEE 10
	REINFORCED OPENING SEE 18

NOTE:
CHECK FIRST IF OPENING(S) MEET THE CRITERIA FOR UNREINFORCED. IF NOT, CHECK IF OPENING(S) MEET THE CRITERIA FOR REINFORCED. IF NOT, THEN OPENING(S) SHALL BE FRAMED.

CLASSIFICATION OF OPENINGS IN DECK

14
S7.1



TYPICAL BEAM TO BEAM SIMPLE CONNECTION

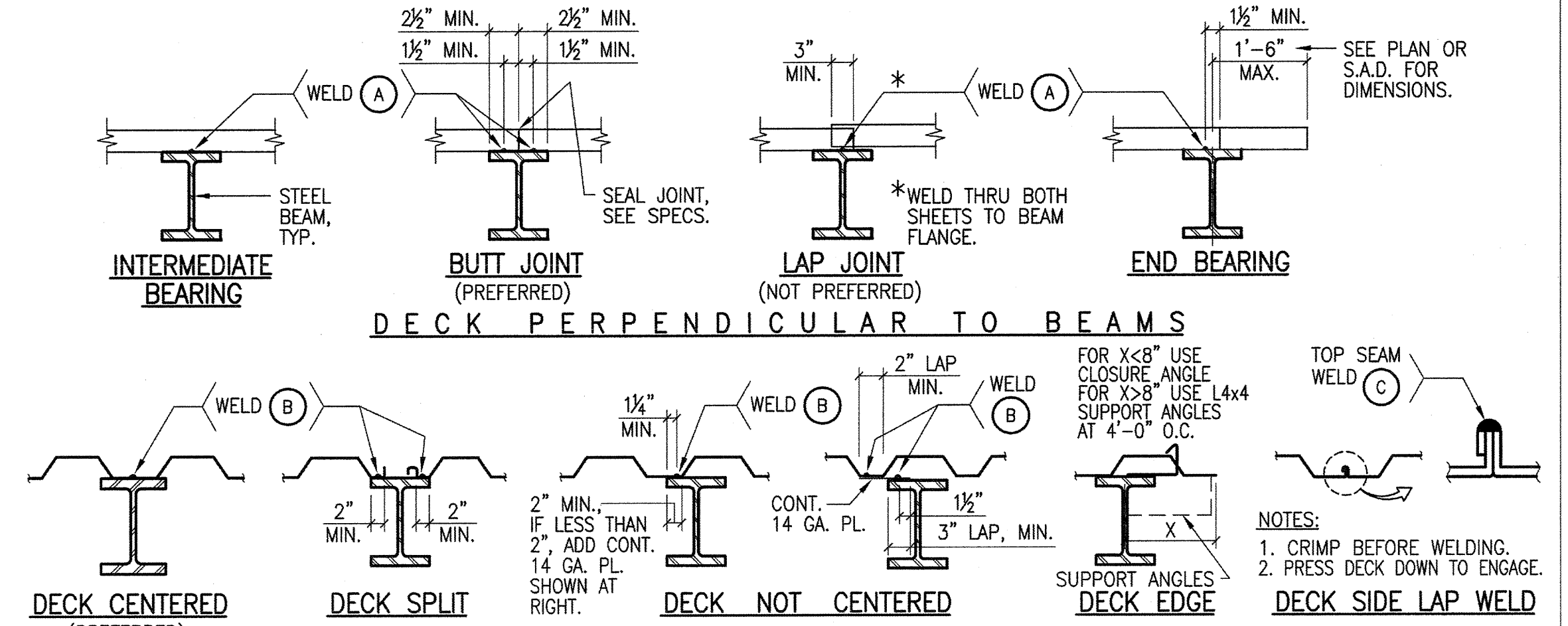
9
S7.1

BEAM SIZE	NO. OF BOLTS (PER ROW)	MIN. TOP OF BEAM TO C.L. 1st BOLT	SINGLE ROW OF BOLTS		DOUBLE ROW OF BOLTS	
			BOLT DIAM.	WEB PL THICKNESS	BOLT DIAM.	WEB PL THICKNESS
			WELD	WELD	WELD	WELD
W8	2	2 1/2"	3/8"	1/2"	3/8"	1/2"
W10	2	2 1/2"	3/8"	1/2"	3/8"	1/2"
W12, W14	3	3"	3/8"	1/2"	3/8"	1/2"
W16, W18	4	3"	3/8"	1/2"	3/8"	1/2"
W21	5	4 1/2"	3/8"	1/2"	3/8"	1/2"
W24	6	4 1/2"	3/8"	1/2"	3/8"	1/2"
W27	7	4 1/2"	3/8"	1/2"	1"	1/2"
W30	8	4 1/2"	3/8"	1/2"	1"	1/2"
W33	9	4 1/2"	3/8"	1/2"	1"	1/2"
W36	10	4 1/2"	3/8"	1/2"	1"	1/2"
W40	11	4 1/2"	3/8"	1/2"	1"	1/2"

- WELDING FOR WEB PL SHALL BE AS SHOWN IN THE SCHEDULE, BUT NOT SMALLER THAN THE AISC MINIMUM WELD THICKNESS.
- USE A325-N BOLTS TYPICAL, U.O.N. ALL BOLTS SHALL BE FULLY TENSIONED U.O.N. IN DETAILS. USE A325-SC BOLTS FOR ALL MOMENT CONNECTIONS AND WHERE NOTED ON OTHER DETAILS.
- BOLT SPACING AND EDGE DISTANCE SHALL CONFORM TO AISC SPECIFICATIONS.
- USE SLOTTED HOLES FOR W27 AND DEEPER BEAMS.

BEAM WEB CONNECTION SCHEDULE

1
S7.1



DECK PERPENDICULAR TO BEAMS

TYPICAL STEEL DECK TO BEAM WELD DETAILS - NO SHEAR STUDS

OR CONCRETE FILL SEE STEEL DECK WELDING SCHEDULE, NOTES AND OTHER DETAILS

2
S7.1

DETAIL

1 1/2"=1'-0"

23
S7.1

DETAIL

1 1/2"=1'-0"

19
S7.1

DETAIL

1"=1'-0"

15
S7.1

METAL DECK PROFILES AND MINIMUM PROPERTIES

11
S7.1

STEEL DECK NOTES

1. SEE ROOF AND FLOOR FRAMING PLANS FOR EXTENT OF DECK TYPES. NOT ALL DECK TYPES ARE SHOWN.

2. DECK SIDE LAPS SHALL BE CRIMPED TOGETHER AT WELD POINTS BEFORE MAKING TOP SEAM WELDS.

3. SEE TYPICAL DETAILS ON THIS SHEET FOR REINFORCEMENT REQUIRED FOR OPENINGS IN THE DECK. SEE ARCHITECTURAL, MECHANICAL AND ELECTRICAL DRAWINGS FOR MAJOR OPENING SIZES AND LOCATIONS. OTHER OPENINGS ARE NOT SHOWN AND ARE SUBJECT TO REVIEW AND APPROVAL BY THE ARCHITECT AND STRUCTURAL ENGINEER.

4. SEE ARCHITECTURAL AND/OR STRUCTURAL DRAWINGS FOR EDGE OF DECK DIMENSIONS.

5. ALL BEAMS COVERED BY STEEL DECK ARE TO HAVE DECK WELDED TO IT.

6. STEEL DECK AND STEEL MEMBER SURFACES COVERED BY STEEL DECK SHALL NOT BE PAINTED AND SHALL BE FREE OF MOISTURE, RUST, SCALE, DIRT, SAND AND OTHER MATERIALS THAT WILL INTERFERE WITH THE WELDING OPERATIONS. SEE SPECS.

7. STEEL DECK CONTRACTOR SHALL PROVIDE AND INSTALL CLOSURE ANGLES, AND OTHER GAGE METAL SHAPES TO CLOSE ALL MISC. OPENINGS IN DECK AS NEEDED AROUND COLUMNS, VERTICAL DISCONTINUITIES, ETC.

8. ALL PUDDLE WELDS ARE 3/4" OR EQUAL, REFER TO MANUFACTURER'S RECOMMENDATION.

9. STEEL DECK W/O CONCRETE MAY REQUIRE LIGHT GAGE EDGE ANGLES OR CLOSURE ANGLE, ETC. REFER TO ARCHITECTURAL DRAWINGS FOR EXTENT.

10. LAYOUT OF DECK SHALL PROVIDE SHEETS OF SUFFICIENT LENGTH TO SPAN AT LEAST THREE SPANS. ENDS SHALL TERMINATE OVER A SUPPORT PERPENDICULAR TO THE DECK SPAN, EXCEPT AT OPENINGS OR BUILDING EDGES WHERE DECKS MAY BE CANTILEVERED AS SHOWN. SEE SPECIFICATIONS FOR COMPLETE REQUIREMENTS.

11. DO NOT PLACE CONDUITS OR PIPES IN CONCRETE FILL OVER METAL DECK.

DECK AND FILL MARK (SEE PLAN)	DECK GAGE AND PROFILE TYPE (SEE PLAN)	DECK WELDS, SEE DETAIL(S)						REMARKS
		WELD (A)		WELD (B)		WELD (C)		
		SIZE AND TYPE	# PER SHEET	SIZE AND TYPE	SPACING	SIZE AND TYPE	SPACING	
1	A (16 GA.)	3/4" P.W.	4	3/4" P.W.	12" O.C.	1 1/2" TSW	12" O.C.	

P.W. = PUDDLE WELD, TSW = TOP SEAM WELD

STEEL DECK AND FILL SCHEDULE

4
S7.1

McCarthy Building Companies, Inc.
343 Sansome Street, 14th Floor
San Francisco, California 94104
P 415 364-1339
F 415 397-5999



FORELL/ELBESSER ENGINEERS, INC.
550 Third Street - San Francisco, CA 94111
Phone: (415) 837-0700 Fax: (415) 837-0800
www.forell-elbesser.com

IDENTIFICATION STAMP
DIV. OF THE STATE ARCHITECT
OFFICE OF REGULATION SERVICE
APPL. # 01-110097
DATE: APR 10 2009
FILE NUMBER:

This set of all other project documents and all ideas, methods, and designs incorporated therein are instruments of service. All project documents are the intellectual property of LPA, KH, or their affiliates and shall remain the property of LPA, KH, or their affiliates. No part of this set of documents may be reproduced, stored in a retrieval system, or transmitted in any form or by any means, electronic, mechanical, photocopying, recording, or by any information storage and retrieval system, without the prior written consent of LPA, KH, or their affiliates. The user of these documents shall be deemed to have accepted the terms and conditions of this license. LPA, KH, or their affiliates shall not be liable for any damages, including consequential damages, arising from the use of these documents. The user shall indemnify and hold LPA, KH, or their affiliates harmless from all claims, damages, costs, or expenses, including reasonable attorneys' fees, arising from the use of these documents. This license shall terminate if the user fails to comply with the terms and conditions of this license. The user shall be deemed to have accepted the terms and conditions of this license by using these documents.

© Copyright 2008