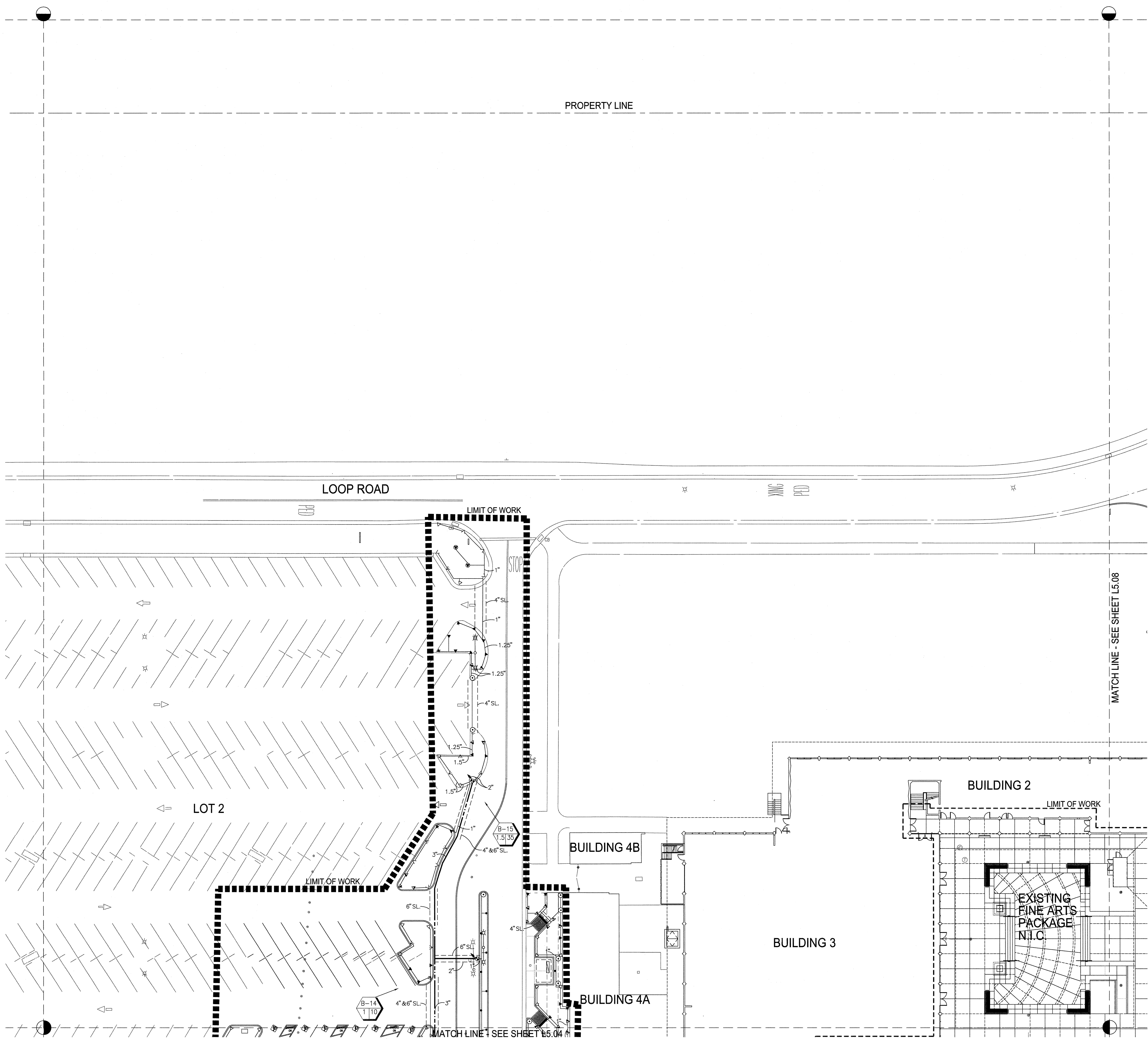


IDENTIFICATION STAMP
DIV. OF THE STATE ARCHITECT
OFFICE OF REGULATION SERVICE
APPL. # 01-110097
AC. J. J. J. J.
DATE APR 09 2008
FILE NUMBER:

This set of other project documents and all files, sections and design incorporated herein are instruments of service. All project documents are the registered property of LPA, Inc. LPA, Inc. consents to make this set of files available for review or reproduction for purposes related to the construction of the project, but only for the project for which this set of files was prepared. LPA, Inc. consents to make this set of files available for review or reproduction for purposes related to the construction of the project, but only for the project for which this set of files was prepared. LPA, Inc. consents to make this set of files available for review or reproduction for purposes related to the construction of the project, but only for the project for which this set of files was prepared. LPA, Inc. consents to make this set of files available for review or reproduction for purposes related to the construction of the project, but only for the project for which this set of files was prepared.

- NOTES:
- ONE BUBBLER SYMBOL IS SHOWN AT TREES FOR GRAPHIC CLARITY ONLY. INSTALL TWO BUBBLERS AT EACH TREE AS DETAILED.
 - IRRIGATION EQUIPMENT MAY BE SHOWN WITHIN HARDSCAPE FOR GRAPHIC CLARITY ONLY. INSTALL ALL IRRIGATION EQUIPMENT WITHIN PLANTED AREAS. IRRIGATION PIPE AND WIRE CROSSING BENEATH HARDSCAPE SURFACES SHALL BE CONTAINED WITHIN SLEEVING OR SCHEDULE 40 PVC CONDUIT. SLEEVING SIZE SHALL BE A MINIMUM OF TWO TIMES THE AGGREGATE DIAMETER OF ALL PIPES CONTAINED WITHIN SLEEVE. PROVIDE VERTICAL SWEEP FOR ALL ELECTRICAL CONDUIT ON EACH SIDE OF HARDSCAPE AND TERMINATE ENDS AT 12" MINIMUM DEPTH AND 12" FROM HARDSCAPE SURFACE.
 - UNSIZE LATERAL LINE PIPING LOCATED DOWN STREAM OF 1" PIPING SHALL BE 3/4" IN SIZE (TYPICAL).
 - SIZING OF LATERAL PIPE SHALL BE AS FOLLOWS:

.75"	0-6 GPM
1"	7-12 GPM
1.25"	13-20 GPM
1.5"	21-32 GPM
2"	33-50 GPM
2.5"	51-70 GPM
3"	71-120 GPM



IRRIGATION PLAN 1" = 20'-0"

College of San Mateo
Site Package
San Mateo, CA
Developed for
San Mateo County Community College District

Revision	Description	Date

Revision	Description	Date

Job No.	27082.30
Date	09 APRIL 2008
Drawn by	AG, RF
Checked by	SM
Scale	1" = 20'-0"
IRRIGATION PLAN	
L5.07	

Prepared by:
Russell D. Mitchell Associates, Inc.
2780 Camino Diablo
Walnut Creek, CA 94597
Phone (925) 932-3588 Local FAX (925) 932-5671