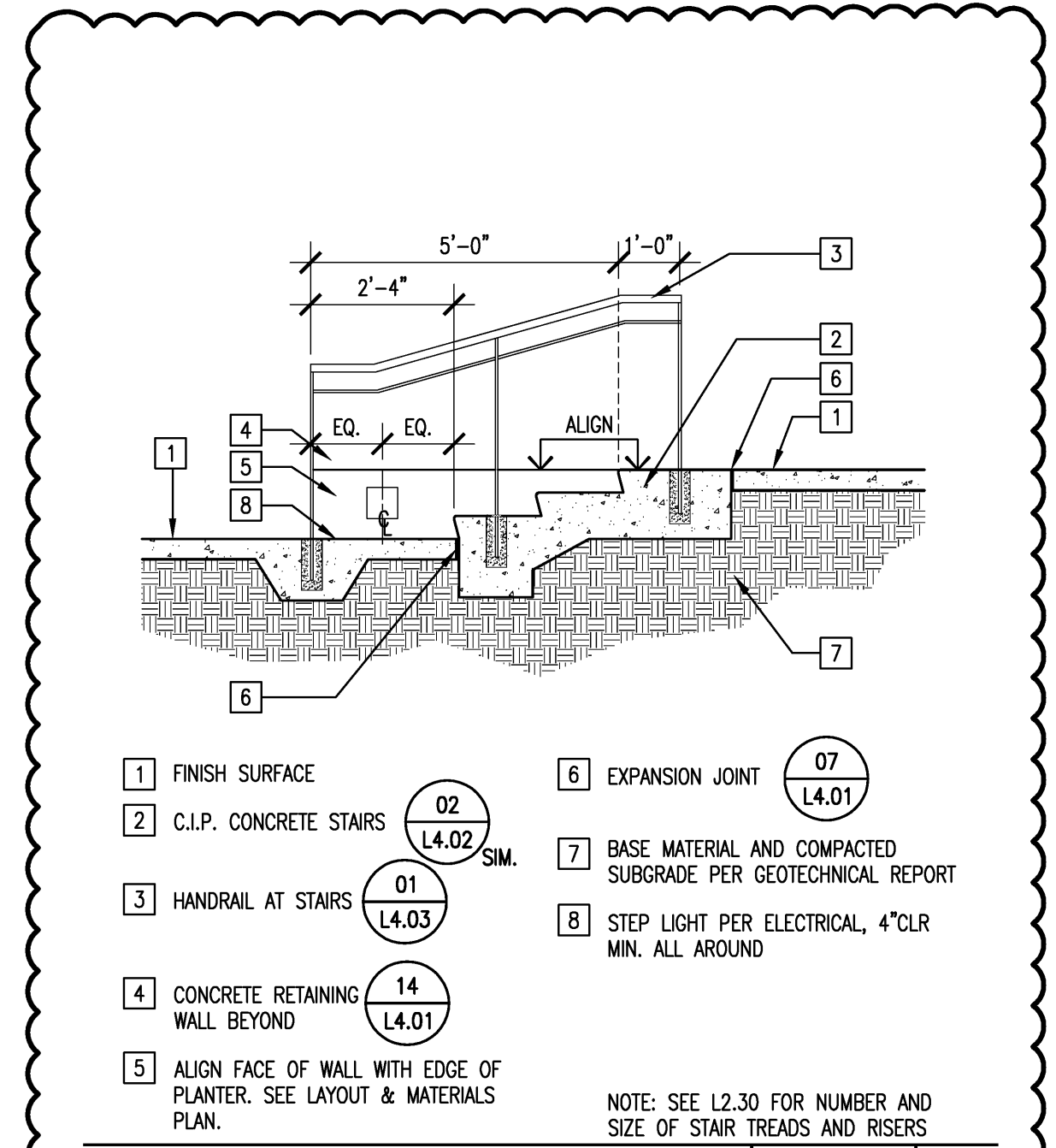


IDENTIFICATION STAMP
DIV. OF THE STATE ARCHITECT
OFFICE OF REGULATION SERVICE
APPL. # 01-110097
AC: _____ FLS: _____ SS: _____
DATE: _____
FILE NUMBER: _____

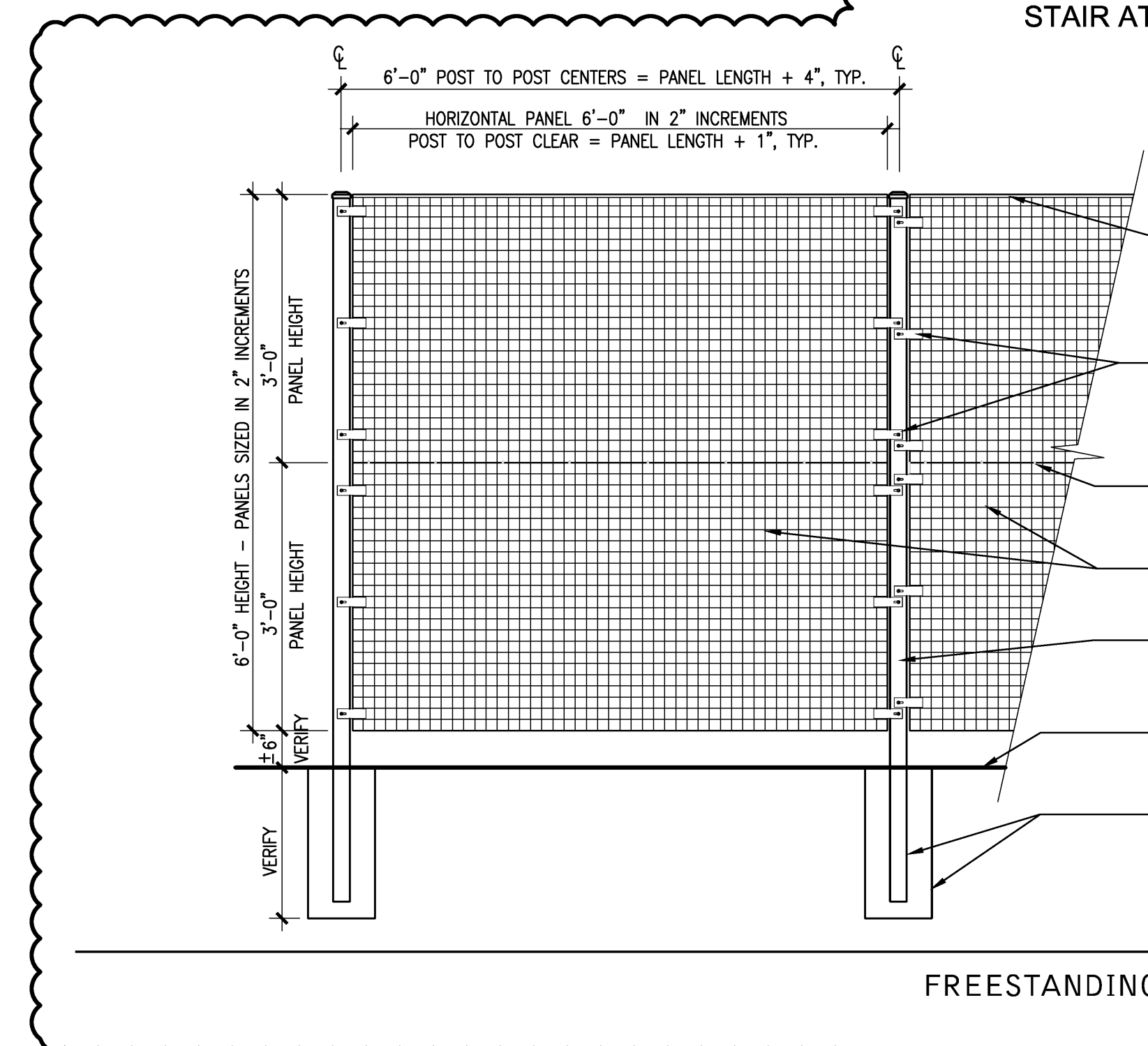
This and all other project documents and all ideas, methods and designs incorporated herein are instruments of service. All project documents are the registered property of LPA, Inc. (LPA) and shall be held in confidence. It is agreed that any project or system design or document is the confidential agreement between McCarthy and the District. LPA hereby grants limited access to each project document only to reproduction or modification (rework) is not only unlawful but also constitutes a breach of the contract between McCarthy and the District. LPA and its Consultants shall not be held responsible for any errors or omissions in any project documents. LPA and its Consultants shall not be held responsible for any errors or omissions in any project documents. LPA and its Consultants shall not be held responsible for any errors or omissions in any project documents. LPA and its Consultants shall not be held responsible for any errors or omissions in any project documents.

© Copyright 2009



- 1 FINISH SURFACE (07 L4.01)
 - 2 C.I.P. CONCRETE STAIRS (02 L4.02 SIM.)
 - 3 HANDRAIL AT STAIRS (01 L4.03)
 - 4 CONCRETE RETAINING WALL BEYOND (14 L4.01)
 - 5 ALIGN FACE OF WALL WITH EDGE OF PLANTER. SEE LAYOUT & MATERIALS PLAN.
 - 6 EXPANSION JOINT (07 L4.01)
 - 7 BASE MATERIAL AND COMPACTED SUBGRADE PER GEOTECHNICAL REPORT
 - 8 STEP LIGHT PER ELECTRICAL, 4" CLR MIN. ALL AROUND
- NOTE: SEE L2.30 FOR NUMBER AND SIZE OF STAIR TREADS AND RISERS

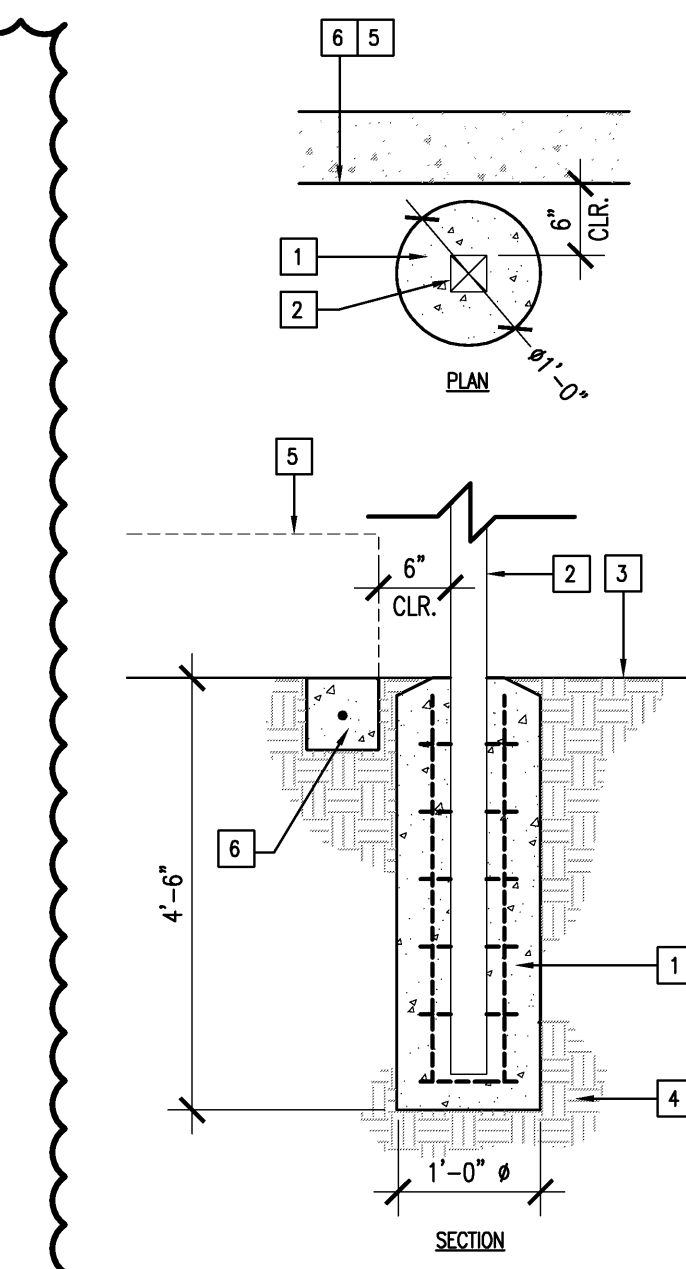
STAIR AT B17 COURTYARD 3/8" = 1'-0" 03ST01 02



- 1 #5105 STEEL EDGE TRIM @ TOP EDGE OF PANEL, TYP.
- 2 #5145 POST CLIPS MOUNTED FRONT & BACK @ EACH LOCATION w/ STAINLESS STEEL TEK SCREW, TYP.
- 3 #5131 FLEX "C" RINGS @ PANEL TO PANEL SEAM
- 4 3" THICK GREENSCREEN PANEL, TYP.
- 5 3" SQUARE STEEL TUBE w/ POST CAP, TYP.
- 6 FINISH GRADE
- 7 CONCRETE FOOTING (24)

NOTE: FOR ADDITIONAL DETAILS AND INFORMATION REFER TO MANUFACTURER'S SPEC. AND INSTALLATION.

FREESTANDING GREEN SCREEN 3/2" = 1'-0" GREENSCREEN 03



- 1 CONCRETE FOOTING DIMENSIONS AND REINFORCEMENT PER STRUCTURAL (12) (302) SIM.
- 2 3" SQUARE TUBE STEEL POST AT GREEN SCREEN PER (02)
- 3 FINISH GRADE
- 4 BASE MATERIAL AND COMPACTED SUBGRADE PER GEOTECHNICAL REPORT
- 5 ADJACENT BLDG SLAB. SEE PLANS FOR LOCATION
- 6 ADJACENT CONCRETE MOW CURB. SEE PLANS FOR LOCATION

GREEN SCREEN FOOTING 3/4" = 1'-0" G.S. FOOTING 04

Revision	Description

Revision	Description	Date

Job No.	27082.30
Date	09 APRIL 2009
Drawn by	AG, RF
Checked by	SM
Scale	AS SHOWN

CONSTRUCTION DETAILS

L4.05