

EYEBALL INLET FITTING, 1" DRIFICE, 1 1/2" NPT, CAST BRONZE CONST. STANDARD BRONZE (4865+4249) (TYP. 4)

3
F.6.09
FILTER PUMP, SUBMERSIBLE TYPE, 2 Hp., RATED 45 GPM @ 60' TDH, 3600RPM, 4" NPT 208V/3Ph/60Hz. STP-6TP5-275-B76209 FOUNTAIN SUPPLY COMPANY

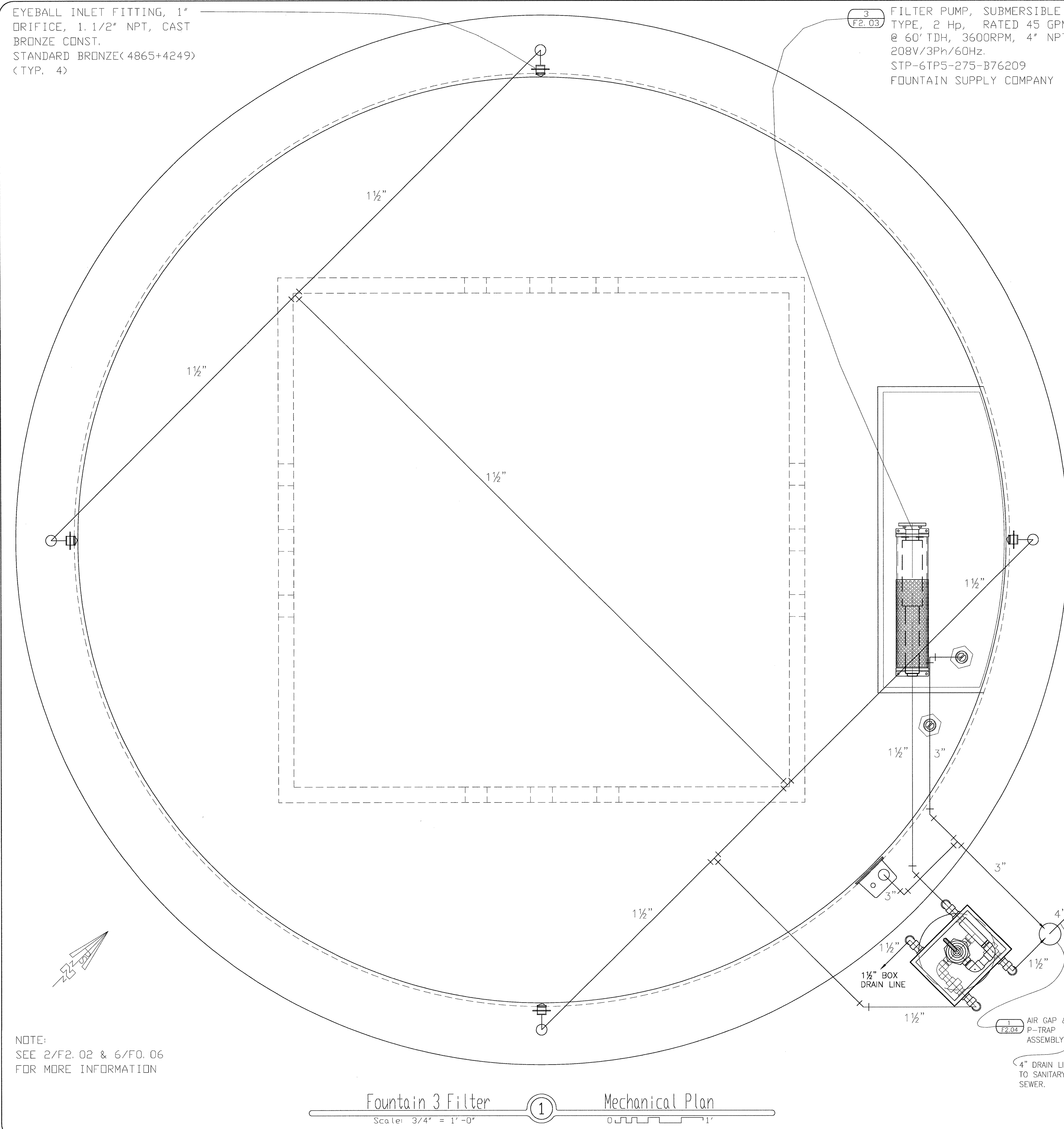
NOTE:
CHECK INVERT ELEVATIONS OF EXISTING SEWER SYSTEM.

WATER LEVEL CONTROL, LEVEL SENSOR, 3" SIDEWALL OVER-FLOW DRAIN, AND LOW WATER LEVEL CUT OFF. PEL-104-48 PEM FOUNTAINS

FLOOR DRAIN WITH PLUG, 3" NPT, CAST BRONZE. 7683 STANDARD BRONZE LOCATED ON POOL FLOOR NEAR WATER LEVEL CONTROL.

LOCATED IN EQUIPMENT SUMP

Drain System Piping Schematic
Scale: None



NOTE:
SEE 2/F.02 & 6/F.06 FOR MORE INFORMATION

Fountain 3 Filter Mechanical Plan
Scale: 1/2"

EYEBALL INLET FITTING, 1" DRIFICE, 1 1/2" NPT, CAST BRONZE CONST. STANDARD BRONZE (4865+4249) (TYP. 4)

1 1/2" TO SANITARY SEWER THRU THE AIR GAP & P-TRAP ASSY.

1 1/2" TO STORM SEWER (OR TO SANITARY P-TRAP).

FILTER PUMP, SUBMERSIBLE TYPE, 2 Hp., RATED 45 GPM @ 60' TDH, 3600RPM, 4" NPT 208V/3Ph/60Hz. STP-6TP5-275-B76209 FOUNTAIN SUPPLY COMPANY

6
F.6.06
FILTER, DIRECT BURIAL SAND TYPE, 1 1/2" CONNECTIONS, RATED 60 GPM MAX. DBSF-60G H. B. ABRAMS COMPANY

Filter System Plumbing Schematic
Scale: None

Not Used
Scale: None

Not Used
Scale: None



McCarthy Building Companies, Inc.
343 Sansome Street, 14th Floor
San Francisco, California 94104
P 415 364-1339
F 415 397-5999



Formosa
Fountain & Engineering Company
412 E. Commonwealth Ave., Suite 1
Fullerton, Calif., 92832
Tel: (714) 526-6606/Fax: (714) 526-6616
www.formosafountains.com

This and all other printed documents and all ideas, methods and designs incorporated therein are instruments of service. All project documents are the registered property of LPA, Inc. (LPA) and cannot be copied, used, or reproduced in any way without the express written consent of LPA, Inc. LPA, Inc. shall not be held responsible for any errors or omissions in this document or any other documents or specifications. LPA, Inc. shall not be held responsible for any errors or omissions in this document or any other documents or specifications. LPA, Inc. shall not be held responsible for any errors or omissions in this document or any other documents or specifications. LPA, Inc. shall not be held responsible for any errors or omissions in this document or any other documents or specifications.

Copyright 2008

IDENTIFICATION STAMP
DIVISION OF THE STATE ARCHITECT
APR 09 2009
AC
DATE

APR 09 2009

College of San Mateo
Site Package
San Mateo, CA
Developed for
San Mateo County Community College District

Date	Revision	Description

Revision	Description	Date

Job No.	27082.30
Date	09 APRIL 2009
Drawn by	VM
Checked by	LM
Scale	AS SHOWN

FOUNTAIN 3
MECHANICAL PLAN
& SCHEMATICS

F2.02