

UNDERGROUND UTILITIES SHOWN FOR REFERENCE ONLY

GENERAL NOTES

1. IT IS THE RESPONSIBILITY OF THE OWNER TO MAINTAIN THE INTEGRITY OF THE FIRE SPRINKLER SYSTEM
2. THE DESIGN AND INSTALLATION OF THIS FIRE SPRINKLER SYSTEM SHALL BE IN CONFORMANCE WITH THE REQUIREMENTS OF NFPA 13 (2002), NFPA 14, & NFPA 20
3. THE UNDERGROUND PORTION OF THIS FIRE SPRINKLER SYSTEM SHALL BE IN CONFORMANCE WITH THE REQUIREMENTS OF NFPA 24
4. ALL ELECTRICAL WIRING OF BOTH LINE AND LOW VOLTAGE SHALL BE BY OTHERS
5. ALL PAINTING AND/OR LABELING OF PIPE SHALL BE BY OTHERS
6. ALL FIRE EXTINGUISHERS SHALL BE SUPPLIED BY OTHERS
7. THE FIRE SPRINKLER SYSTEM SHALL BE HYDRAULICALLY DESIGNED AS DETERMINED BY OCCUPANCY RATING AND/OR LOCAL REQUIREMENTS
8. ALL PENETRATIONS OF RATED WALLS, PARTITIONS, OR OCCUPANCY SEPARATIONS SHALL BE FIRE STOPPED WITH AN APPROVED MATERIAL (SEE DETAILS)
9. ALL PIPE 1-1/2" AND LARGER USED FOR WELDED MAIN AND BRANCH LINES SHALL BE SCHEDULE 10 GROOVED AND SHALL CONFORM TO ASTM A-135
10. ALL PIPE 1" THROUGH 2" USED FOR THREADED BRANCH LINES SHALL BE SCHEDULE 40 AND SHALL CONFORM TO ASTM A-135
11. ALL THREADED FITTINGS SHALL BE STANDARD CAST IRON CONFORMING TO ANSI B16.4, DUCTILE IRON CONFORMING TO ASTM A-536, OR MALLEABLE IRON CONFORMING TO ANSI B16.3
12. ALL GROOVED FITTINGS SHALL BE DUCTILE IRON CONFORMING TO ASTM A-536
13. ALL HANGING, BRACING, AND RESTRAINT OF BRANCH LINES SHALL BE IN CONFORMANCE WITH THE REQUIREMENTS OF NFPA 13 (2002), CHAPTER 9
14. ALL MATERIALS AND DEVICES SHALL BE LISTED FOR USE IN FIRE SPRINKLER SYSTEMS IN ACCORDANCE WITH NFPA 13 (2002) 6.1.1
15. NFPA 13 (2002) 10.2.1 - UNDERGROUND MAINS AND LEAD-IN CONNECTIONS SHALL BE COMPLETELY FLUSHED BEFORE CONNECTION IS MADE TO THE FIRE SPRINKLER SYSTEM. FLUSHING SHALL BE WITNESSED BY THE INSPECTOR
16. NFPA 13 (2002) 6.5.2 - ALL WELDING SHALL COMPLY WITH APPLICABLE REQUIREMENTS OF AWS B2.1
17. NFPA 13 (2002) 8.16.1.4 - ALL HANDLES AND WHEELS OF CONTROL VALVES SHALL BE MONITORED AND/OR LOCKED IN THE OPEN POSITION
18. NFPA 13 (2002) 8.16.1 - AN OUTSIDE ALARM BELL SHALL BE CONNECTED TO EACH RISER AND SHALL INCLUDE AN APPROVED IDENTIFICATION SIGN
19. NFPA 13 (2002) 6.2.9 - A STOCK OF SPARE SPRINKLER HEADS OF EACH STYLE, TYPE, AND TEMPERATURE RATING ALONG WITH A SPRINKLER HEAD WRENCH SHALL BE PROVIDED
20. NFPA 13 (2002) 16.2.1 - THE FIRE SPRINKLER SYSTEM SHALL BE HYDROSTATICALLY TESTED AT 200 PSI AND SHALL MAINTAIN THAT PRESSURE FOR 2 HOURS WITHOUT LOSS. THIS TEST SHALL BE WITNESSED BY THE INSPECTOR
21. NFPA 13 (2002) 16.5 - A HYDRAULIC DESIGN DATA NAMEPLATE SHALL BE ATTACHED TO THE SYSTEM RISER
22. NFPA 13 (2002) 16.1 - THE INSTALLING CONTRACTOR SHALL COMPLETE AND SIGN THE APPROPRIATE CONTRACTOR'S MATERIAL AND TEST CERTIFICATE
23. NFPA 13 (2002) 16.2.3.4 - THE MAIN DRAIN VALVE SHALL BE OPENED FULLY AND LEFT OPEN UNTIL THE SYSTEM PRESSURE STABILIZES. THE STATIC AND RESIDUAL PRESSURES SHALL BE RECORDED ON THE CONTRACTOR'S TEST CERTIFICATE

AS-BUILTS

BASIS OF DESIGN

CLASSROOMS, PUBLIC AREAS, AND OFFICES:
 LIGHT HAZARD OCCUPANCY PER NFPA 13 (2002)
 PROVIDE 10 GPM / SQ. FT. OVER 1500 SQ. FT.
 MAXIMUM COVERAGE AREA: 225 SQ. FT. / STANDARD SPRINKLER HEAD
 MAXIMUM COVERAGE AREA: 296 SQ. FT. / EC SPRINKLER HEAD

MECHANICAL AND STORAGE ROOMS:
 ORDINARY HAZARD OCCUPANCY PER NFPA 13 (2002)
 PROVIDE 15 GPM / SQ. FT. OVER 1500 SQ. FT.
 MAXIMUM COVERAGE AREA: 130 SQ. FT. / SPRINKLER HEAD

BUILDING COVERAGE AREA:
 FIRST FLOOR: 26,806 SQ. FT.
 SECOND FLOOR: 30,074 SQ. FT.
 THIRD FLOOR: 32,206 SQ. FT.

WATER SUPPLY INFORMATION:
 WATER FLOW INFORMATION TAKEN ON 9/15/2008
 LOCATION: FIRE HYDRANT #2
 STATIC PRESSURE: 114 PSI
 RESIDUAL PRESSURE: 110 PSI @ 1635 GPM
 BACKFLOW PREVENTION DEVICE
 FIBCO MODEL 879V (PROVIDED BY OTHERS)

Symbol	Brand	Model	S/N #	Description	Size	Temperature	Finish	Escutcheon	Quantity	
○	Tyco	TY-FRB	TY1311	Standard Upright	1/2"	200°	5.6 Brass	nia	113	
⊗	Tyco	TY-FRB	TY1517	EC Upright	1/2"	200°	11.2 Brass	nia	45	
●	Tyco	TY-FRB	TY2311	Semi-Recessed Pendant	1/2"	155°	5.6 Chrome	nia	360	
●	Tyco	TY-FRB	TY2317	EC Semi-Recessed Pendant	1/2"	155°	11.2 Chrome	nia	228	
◀	Tyco	TY-FRB	TY3311	Standard Sidewall	1/2"	155°	5.6 Brass	nia	3	
									Total All Sheets	749

Sprinkler Head Symbols

○	Standard Upright
⊗	EC Upright
●	Semi-recessed Pendant
●	EC Semi-recessed Pendant
▶	Standard Horizontal Sidewall

Riser Symbols

⊙	Riser Location
⊕	Hanger
⊕	Two Way Brace
⊕	Four Way Brace
⊕	Hydraulic Node
○	End of Line Restraint

INDEX OF DRAWINGS

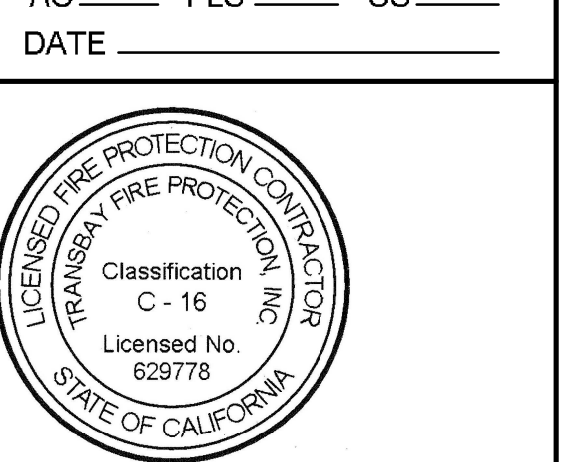
FP-1.0	SITE PLAN AND GENERAL NOTES
FP-1.1	DETAILS
FP-1.2	STANDPIPE AND RISER DIAGRAM
FP-1.3	BUILDING SECTIONS
FP-2.1	LEVEL 1 WEST PIPING PLAN
FP-2.2	LEVEL 1 EAST PIPING PLAN
FP-2.3	LEVEL 2 WEST PIPING PLAN
FP-2.4	LEVEL 2 EAST PIPING PLAN
FP-2.5	LEVEL 3 WEST PIPING PLAN
FP-2.6	LEVEL 3 EAST PIPING PLAN
FP-3.1	LEVEL 1 WEST REFLECTED CEILING PLAN
FP-3.2	LEVEL 1 EAST REFLECTED CEILING PLAN
FP-3.3	LEVEL 2 WEST REFLECTED CEILING PLAN
FP-3.4	LEVEL 2 EAST REFLECTED CEILING PLAN
FP-3.5	LEVEL 3 WEST REFLECTED CEILING PLAN
FP-3.6	LEVEL 3 EAST REFLECTED CEILING PLAN



LPA Inc. | P1548 Eureka Road,
 Suite 101 | Roseville, California
 95661 | P 916 772-4300 | P/F
 916 772-4330 | P/E
 lpa@lpa-inc.com | P/W
 www.lpa-inc.com

Kwan Henmi Architecture / Planning
 466 Montgomery St., Suite 300
 San Francisco, California 94104
 P 415 777-4770
 F 415 777-5102
 W www.kwanhenmi.com

IDENTIFICATION STAMP
 DIVISION OF THE
 STATE ARCHITECT
 APPL. 01-109870
 AC _____ FLS _____ SS _____
 DATE _____



TRANSBAY FIRE PROTECTION, INC.
 License No. 62778
 2182 Rheem Dr. Pleasanton, CA 94588
 (925) 846-9484 Fax (925) 846-9710

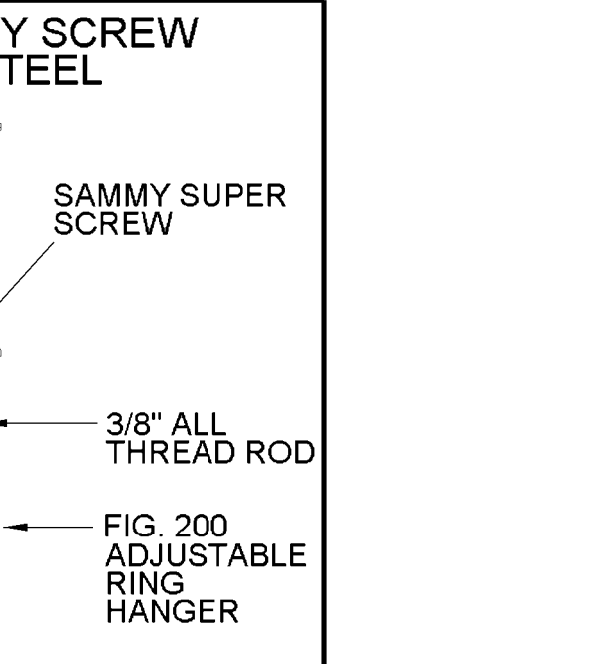
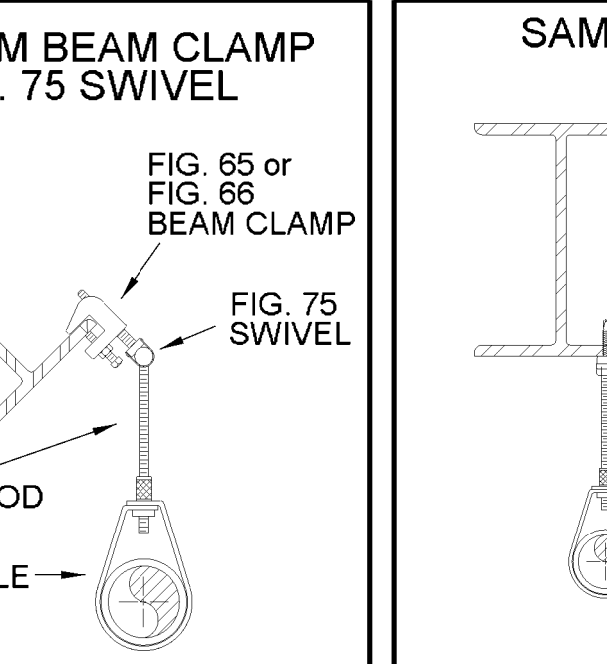
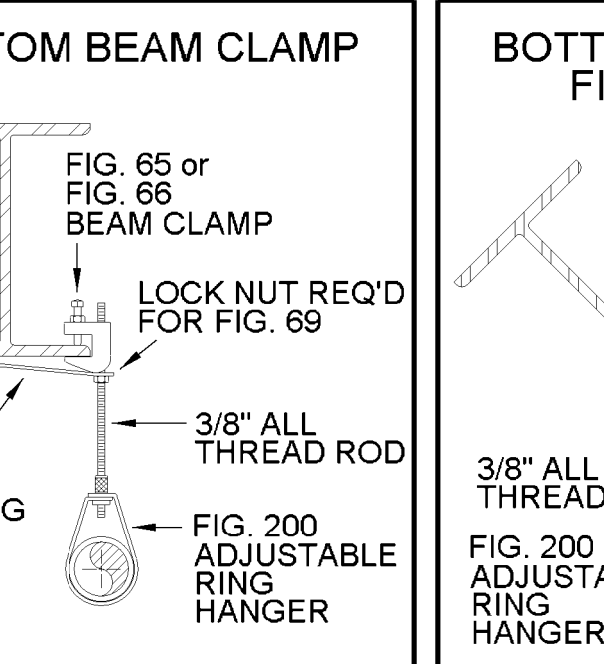
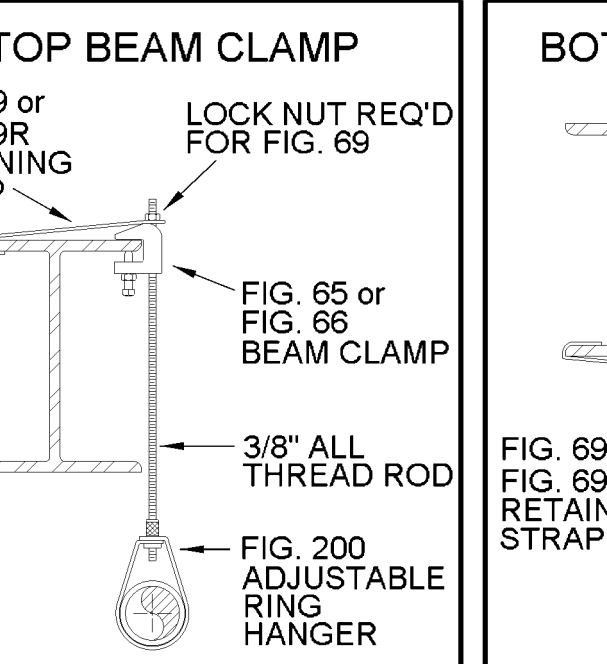
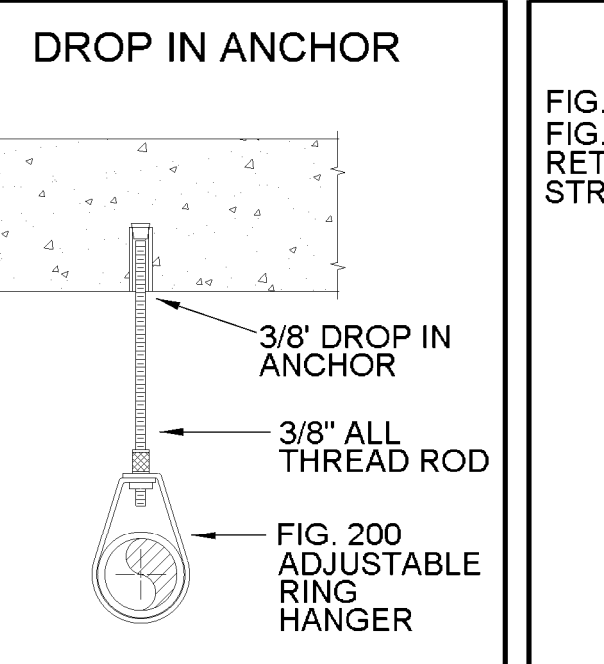
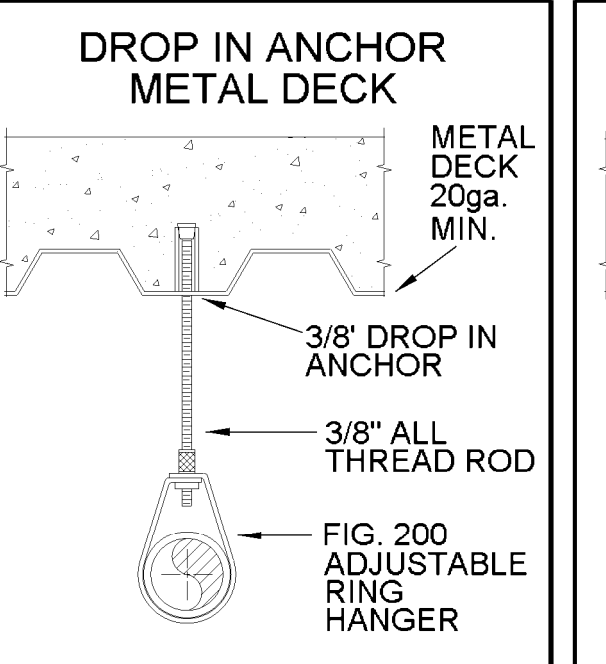
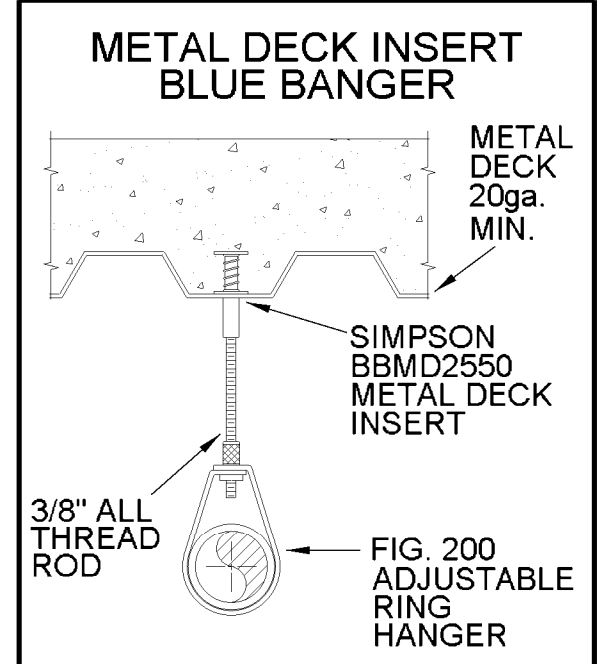
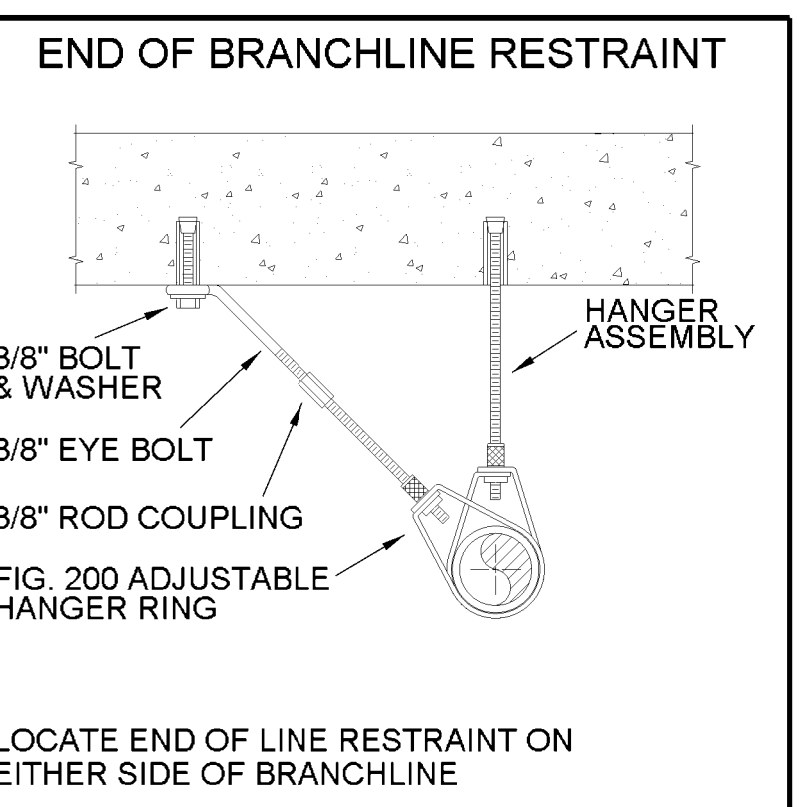
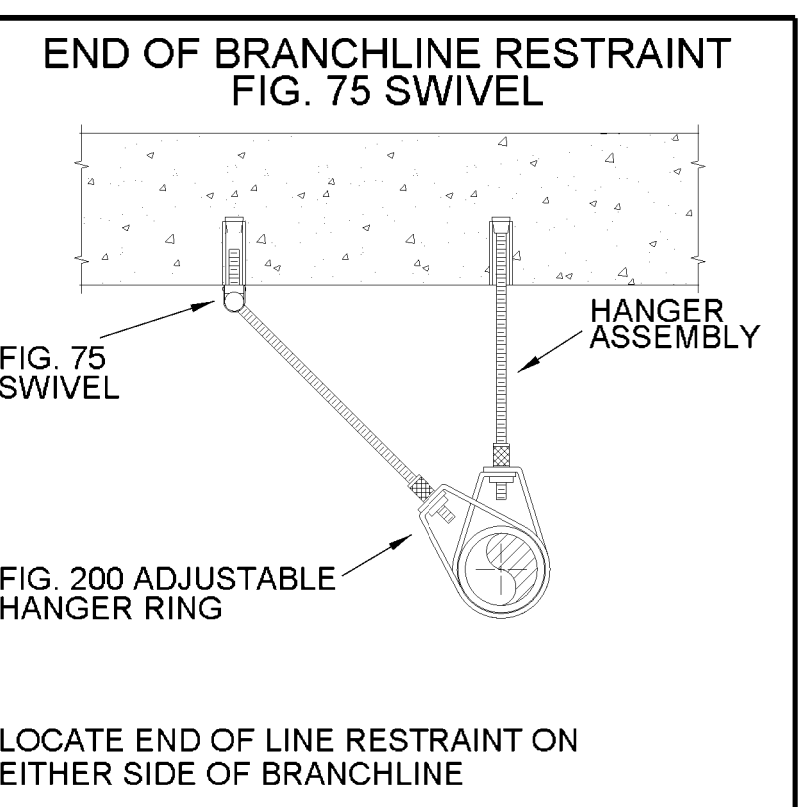
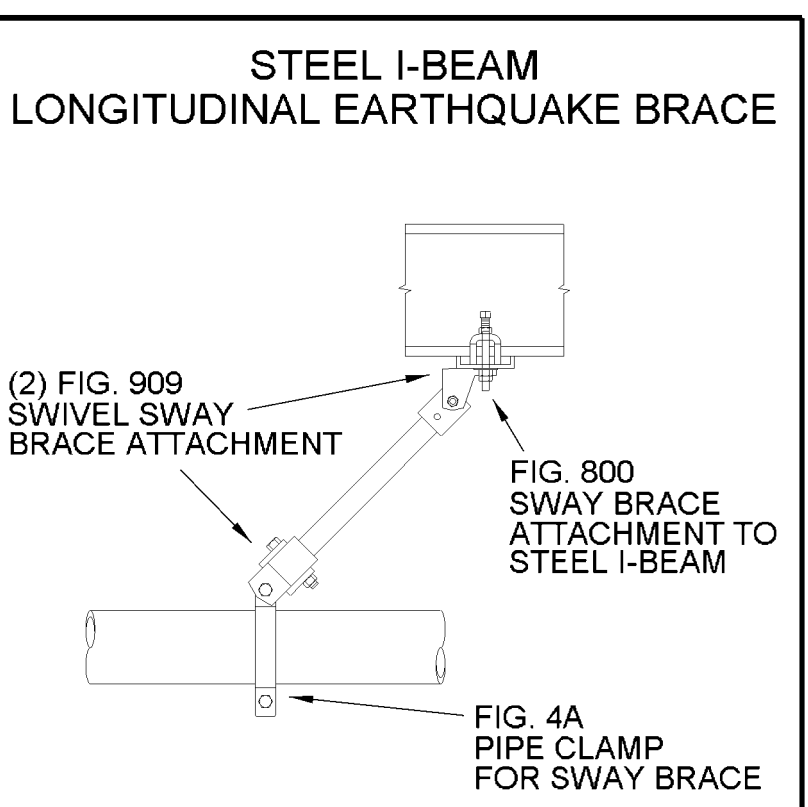
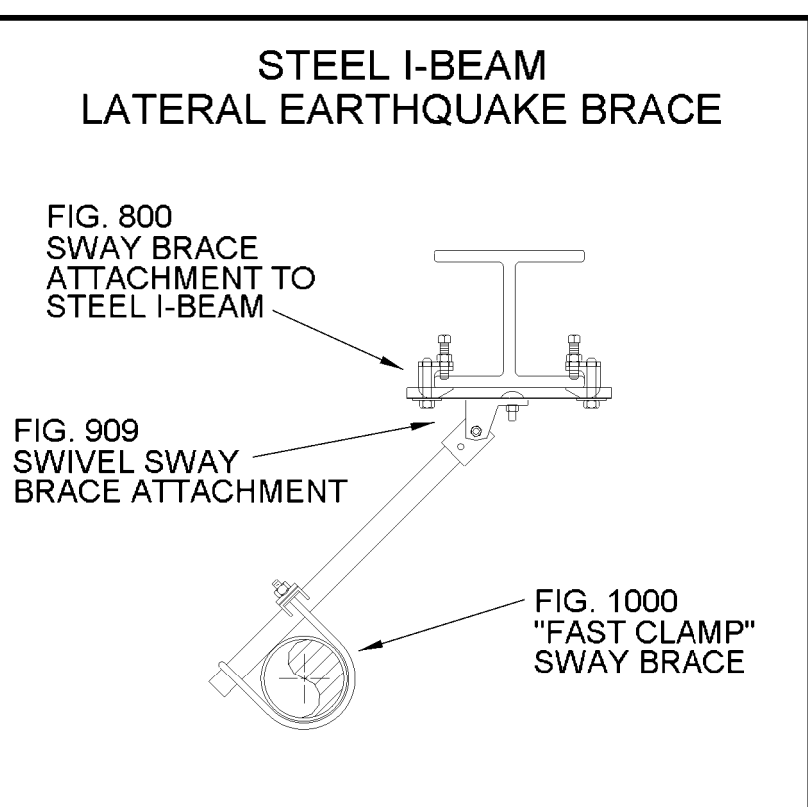
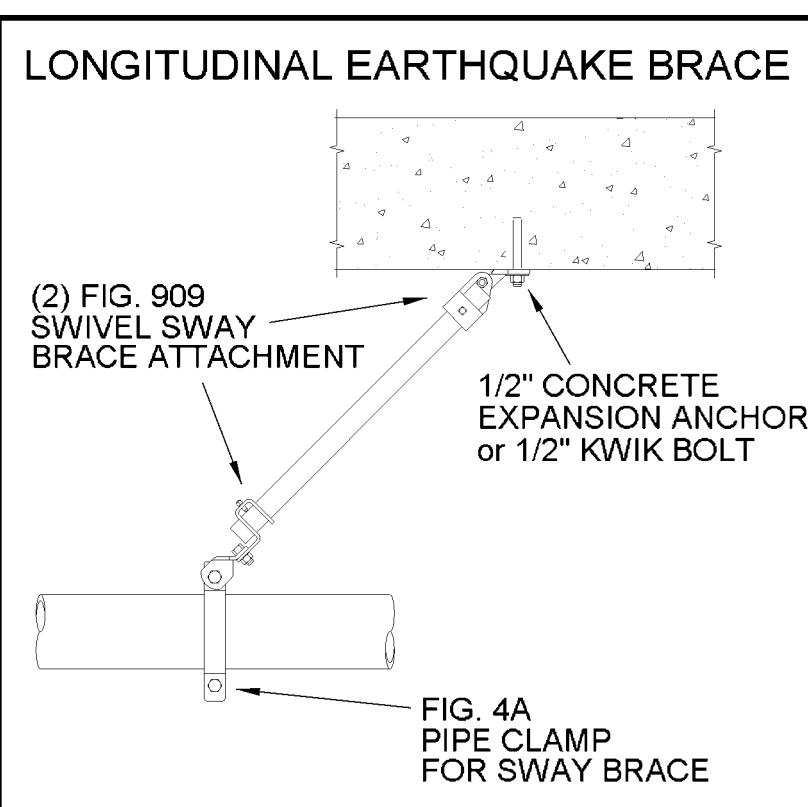
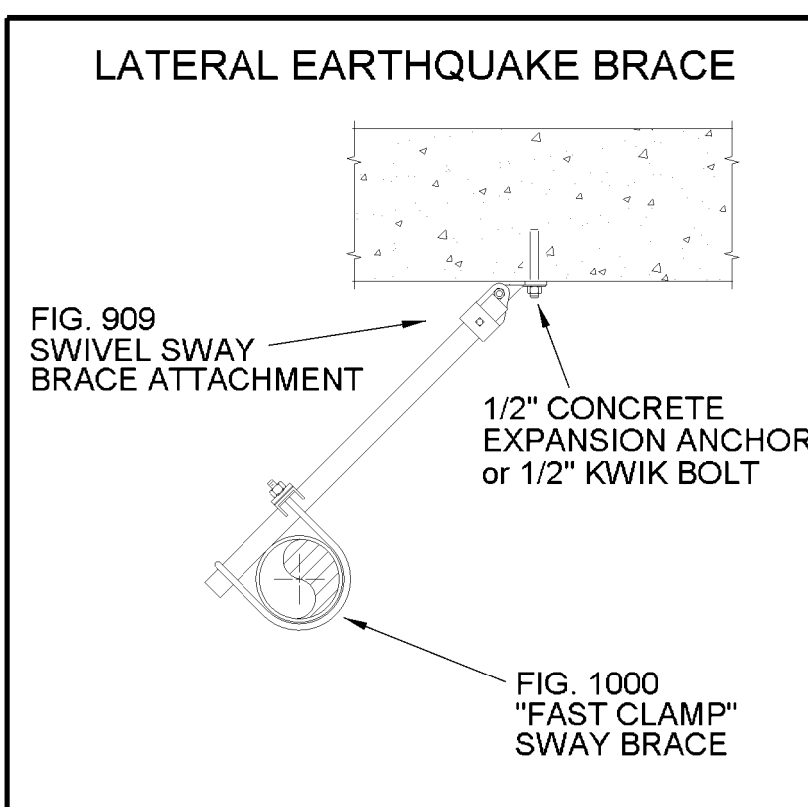
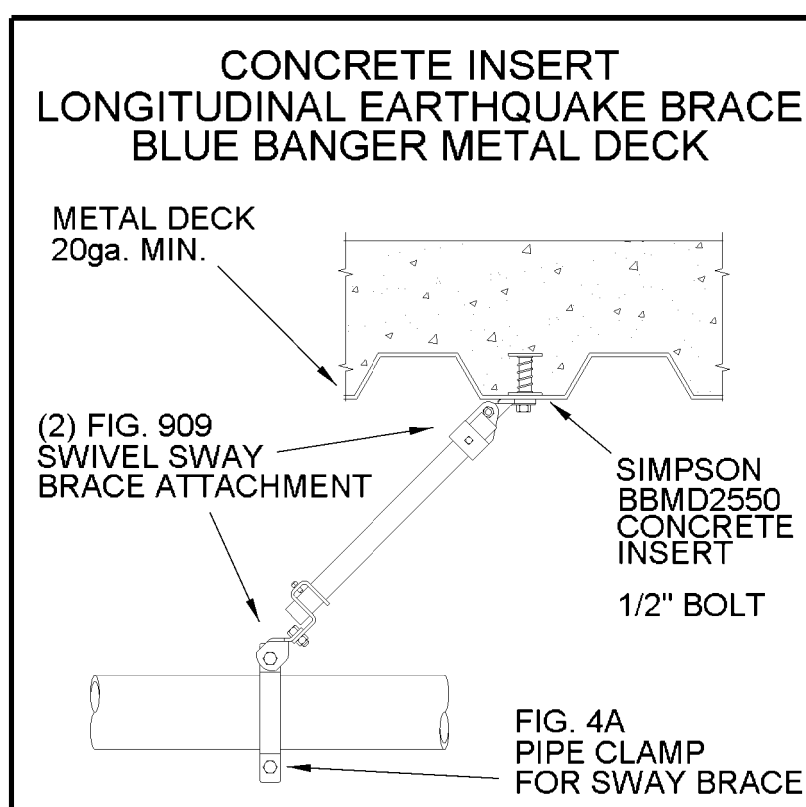
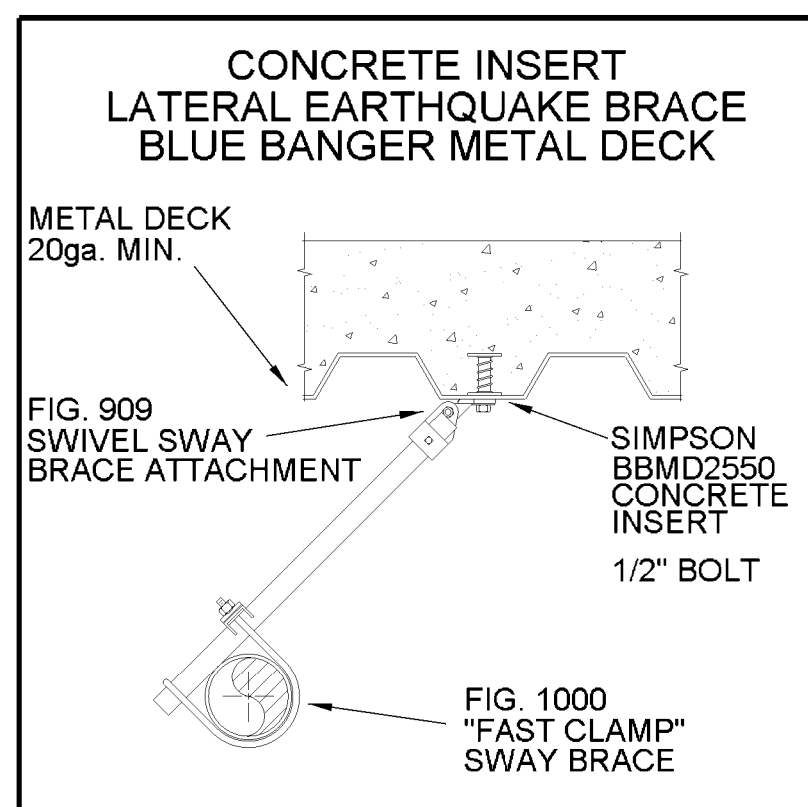
This and all other project documents and all ideas, aesthetics and designs incorporated herein are instruments of service. All project documents are the registered property of Transbay Fire Protection, Inc. (Transbay) and cannot be further used in whole or in part for any other project without the written consent of Transbay. The contractual agreement between Transbay and the Client (Kwan Henmi Architecture / Planning) is the only document that governs the relationship between Transbay and the Client. Transbay is not responsible for any errors or omissions in this document. Transbay is not responsible for any errors or omissions in any other documents or drawings. Transbay is not responsible for any errors or omissions in any other documents or drawings. Transbay is not responsible for any errors or omissions in any other documents or drawings. © Copyright 2008

College of San Mateo
 Building 5N
 Bulletin #4
 San Mateo, CA
 Developed for
 San Mateo Community College District

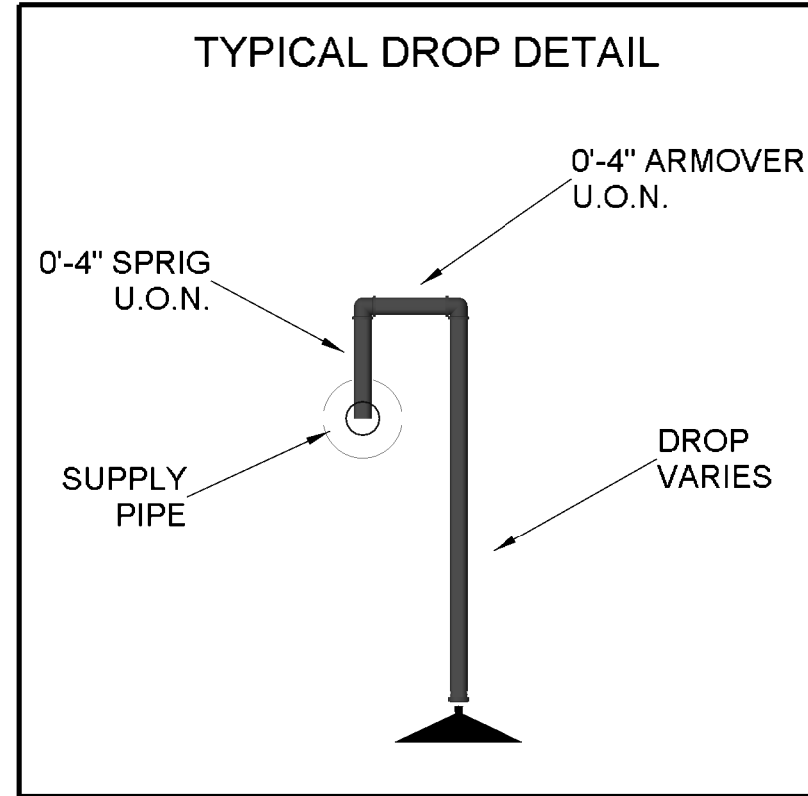
Revision	Description	Date
1	100% CD Set	
2	DSA Backup	
3	Coordination - Bulletin 2	4/20/09

Job Number: 824
 Date: 6-24-09
 Engineer: RR
 Scale: 1/8" = 1'-0"

Site Plan and General Notes
FP-1.0



SHOWN ON PLAN AS:



System No. W-L-1146
September 03, 2004
F Rating - 1 and 2 Hr (See Item 1)
T Rating - 0 Hr

SECTION A-A

- Wall Assembly** - The 1 or 2 hr fire rated gypsum wallboard/steel wall assembly shall be constructed of the materials and in the manner described in the individual U300 or U400 Series Wall or Partition Design in the UL Fire Resistance Directory and shall include the following construction features:
 - Studs** - Wall framing may consist of either wood studs or steel channel studs. Wood studs consist of nominal 2 in. by 4 in. (51 mm by 102 mm) lumber spaced 16 in. (406 mm) OC. Steel studs to be nominal 3-1/2 in. (89 mm) wide and spaced max. 24 in. (610 mm) OC. When steel studs are used and the diam of opening exceeds the width of stud cavity, the opening shall be framed on all sides using lengths of steel stud installed between the vertical studs and screw-attached to the steel studs at each end. The framed opening in the wall shall be 4 in. to 6 in. (102 to 152 mm) wider and 4 in. to 6 in. (102 to 152 mm) higher than the diam of the penetrating item such that, when the penetrating item is centered in the opening, a 2 in. to 3 in. (51 mm to 76 mm) clearance is present between the penetrating item and the framing on all four sides.
 - Gypsum Board*** - The gypsum wallboard type, thickness, number of layers, fastener type and sheet orientation shall be specified in the individual U300 or U400 Series Design in the UL Fire Resistance Directory. Max diam of opening is 26 in. (660 mm) for steel stud walls. Max diam of opening is 14-1/2 in. (368 mm) for wood stud walls.
- The hourly F Rating of the firestop system is equal to the hourly fire rating of the wall assembly in which it is installed.**
 - Steel Pipe** - Nom 24 in. (610 mm) diam (or smaller) Schedule 10 (or heavier) steel pipe.
 - Iron Pipe** - Nom 24 in. (610 mm) diam (or smaller) service weight (or heavier) cast iron soil pipe, nom 12 in (305 mm) diam (or smaller) or Class 50 (or heavier) ductile iron pressure pipe.
 - Caulk** - Nom 6 in. (152 mm) diam (or smaller) steel conduit or nom 4 in (102 mm) diam (or smaller) steel electrical metallic tubing.
 - Copper Tubing** - Nom 6 in. (152 mm) diam (or smaller) Type L (or heavier) copper tubing.
 - Copper Pipe** - Nom 6 in. (152 mm) diam (or smaller) Regular (or heavier) copper pipe.
- FILL Void or Cavity Material*** - Caulk or Sealant - Min 5/8 in. (16 mm) thickness of fill material applied within the annulus, flush with both surfaces of wall. Min 1/2 in. (13 mm) diam bead of caulk applied to the penetrant/wallboard interface at the point contact location on both sides of wall.

3M COMPANY - CP 25WB* caulk or FB-3000 WT sealant.

*Bearing the UL Classification Mark

This material was extracted and down by 3M Fire Protection Products from the 2007 edition of the UL Fire Resistance Directory. © 2004
3M Fire Protection Products www.3m.com/firestop W-L-1146 • 1 of 1 Product Support Line: 1-800-328-1487 (Choose option 4 for 102 DB 105A00)



LPA Inc. | P1548 Eureka Road, Suite 101 | Roseville, California 95661 | PP 916 772-4300 | PF 916 772-4330 | PE lpa@lpa-inc.com | PW www.lpa-inc.com

Kwan Henmi Architecture / Planning
456 Montgomery St., Suite 300
San Francisco, California 94104
P 415 777-4770
F 415 777-5102
W www.kwanhenmi.com

IDENTIFICATION STAMP
DIVISION OF THE STATE ARCHITECT
APPL 01-109870
AC _____ FLS _____ SS _____
DATE _____



AS-BUILTS

Symbol	Brand	Model	SIN #	Description	Size	Temperature	K	Finish	Escutcheon	Quantity
										Total All Sheets

TRANSBAY FIRE PROTECTION, INC.
License No. 62778
2182 Rheem Dr. Pleasanton, CA 94588
(925) 846-9484 Fax (925) 846-9710

This and all other project documents and all ideas, aesthetics and designs incorporated therein are instruments of service. All project documents are the copyrighted property of Kwan Henmi Architecture/Planning, Inc. (Kwan Henmi) and cannot be further used in whole or in part for any project or purpose without the express written consent of Kwan Henmi Architecture/Planning, Inc. (Kwan Henmi). No contract or agreement between Kwan Henmi and the Client shall be deemed to have been entered into until a written contract document is signed by both parties. No contract document is not a contract document unless it is signed by both parties. Kwan Henmi and Kwan Henmi's Consultants make no representation concerning the accuracy of documents and are not responsible for any discrepancies between project documents and the existing conditions.
© Copyright 2008

Revision Description	Date
100% CD Set	
DSA Backup	
Coordination - Bulletin 1	
Coordination - Bulletin 2	4/2/09

Revision Description	Date
Standard Upright	
EC Upright	
Semi-recessed Pendant	
EC Semi-recessed Pendant	
Standard Horizontal Sidewall	

College of San Mateo
Building 9N
Bulletin #4
San Mateo, CA
Developed for
San Mateo Community College District

Job Number	824
Date	6-24-09
Engineer	RR
Scale	1/8" = 1'-0"

Details
FP-1.1

AS-BUILTS

This and all other project documents and all ideas, aesthetics and designs incorporated herein are instruments of service. All project documents are the registered property of Kwan Henmi Architecture / Planning, Inc. (Kwan Henmi) and cannot be further used in whole or in part for any project or purpose without the written consent of Kwan Henmi. Any reproduction or modification of any project document, use, reproduction or modification (re-use) is not only prohibited but also constitutes a breach of contract. Kwan Henmi hereby gives limited notice that any such re-use or modification without the written consent of Kwan Henmi is prohibited. Kwan Henmi and Kwan Henmi's Consultant make no representation concerning the accuracy of documents and are not responsible for any discrepancies between project documents and the existing conditions.
 © Copyright 2008

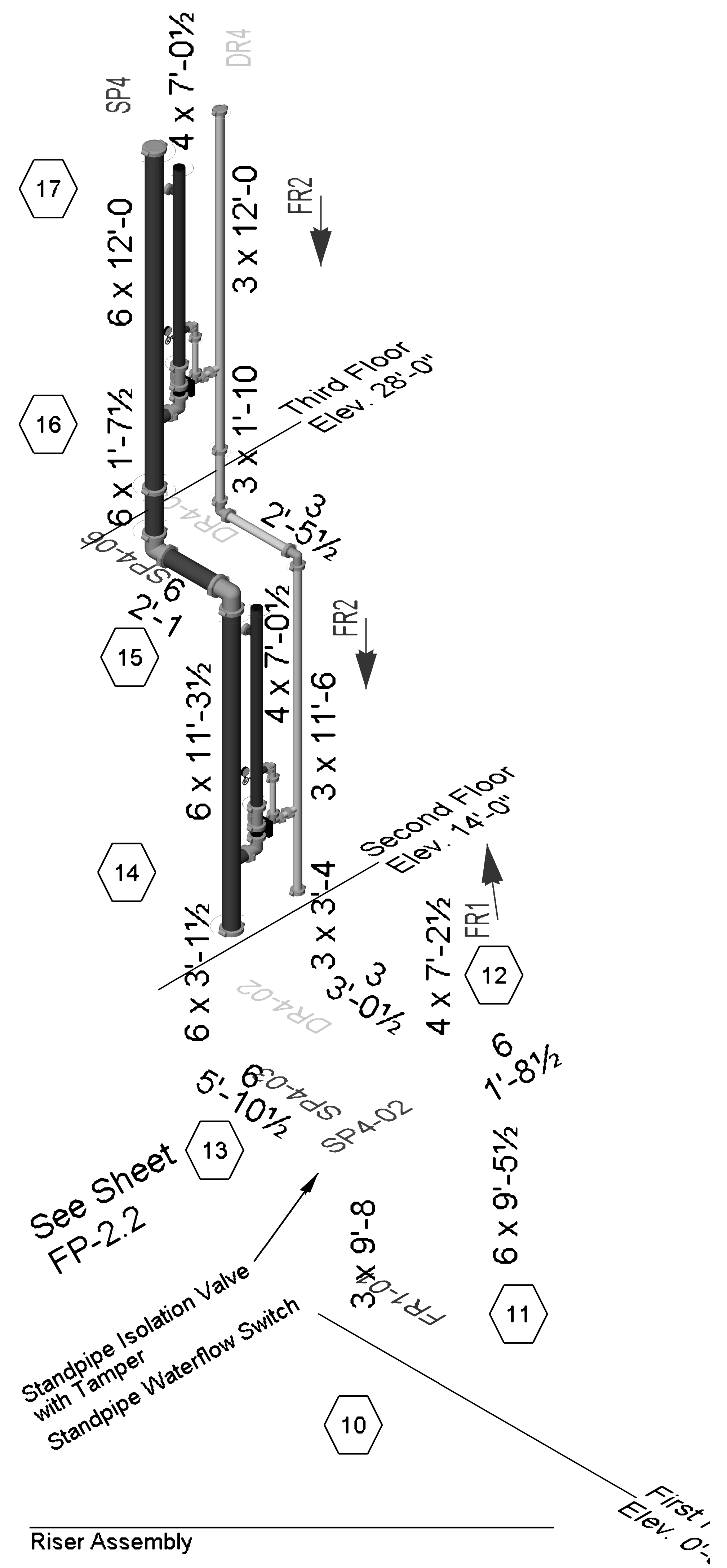
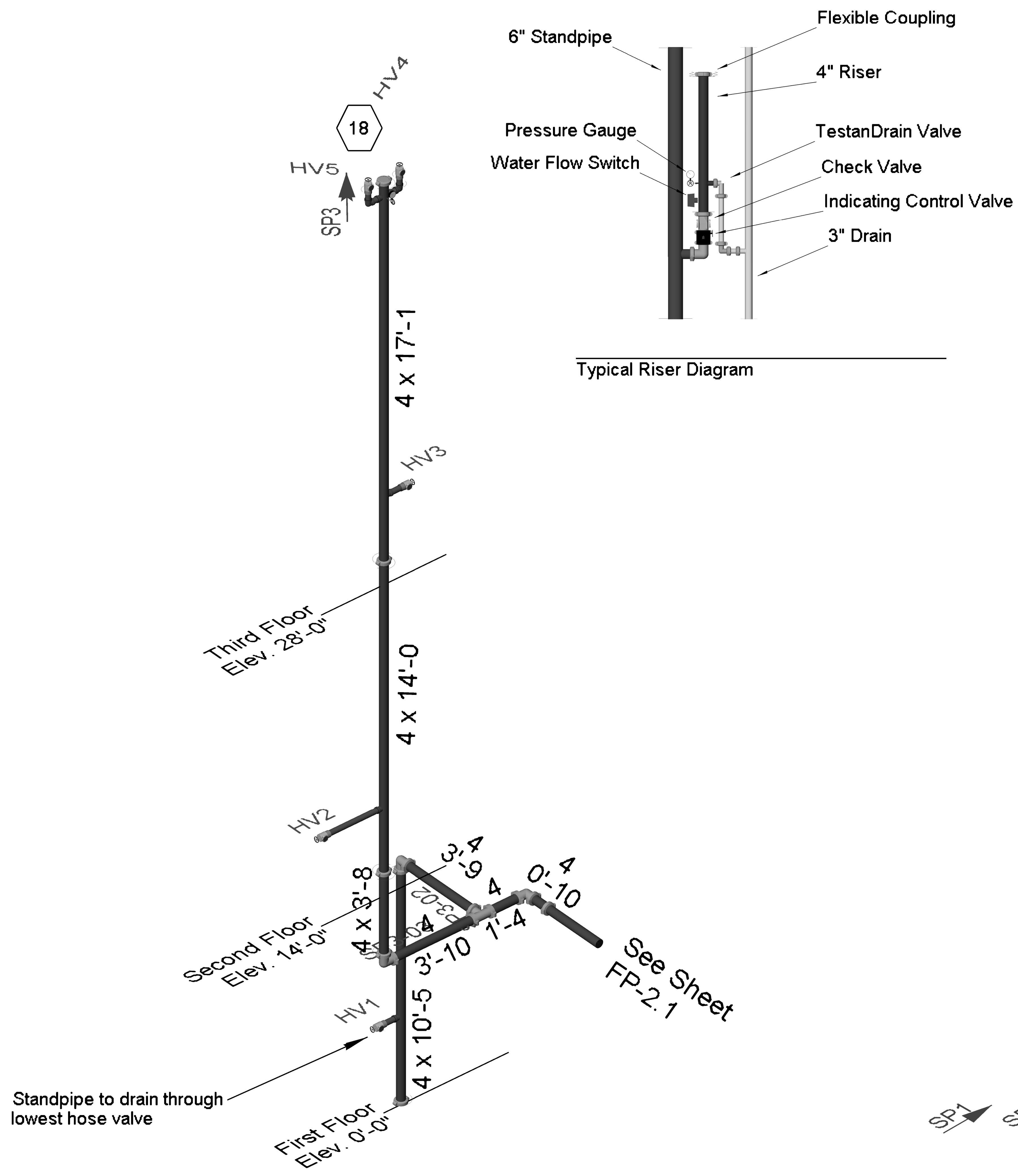
College of San Mateo
 Building 5N
 Bulletin #4
 San Mateo, CA
 Developed for
 San Mateo Community College District

Revision Description	Date
100% CD Set	
DSA Backcheck	
Coordination - Bulletin 2	
Coordination - Bulletin 2	4/2/09

Job Number	824
Date	6-24-09
Engineer	RR
Scale	1/8" = 1'-0"

Standpipe and Riser Diagram

FP-1.2



Symbol	Brand	Model	SN#	Description	Size	Temperature	K	Finish	Escutcheon	Quantity
○				Standard Upright						
⊗				EC Upright						
●				Semi-recessed Pendant						
●				EC Semi-recessed Pendant						
▶				Standard Horizontal Sidewall						

North	Job Number	824
	Date	6-24-09
	Engineer	RR
	Scale	1/8" = 1'-0"

Standpipe and Riser Diagram

FP-1.2



AS-BUILTS

This and all other project documents and all ideas, aesthetics and designs incorporated herein are instruments of service. All project documents are the registered property of Transbay Fire Protection, Inc. (Transbay) and cannot be used in whole or in part for any other project without the written consent of Transbay. Transbay's consent is not required for the use of project documents for reproduction or modification (re-use) in a non-commercial setting. Transbay's consent is not required for the use of project documents for reproduction or modification (re-use) in a non-commercial setting. All other rights are reserved. © Copyright 2008

Project documents describe design intent of work and are not a representation of as-built or existing conditions. Kwan Henmi and Kwan Henmi's Consultants make no representations concerning the accuracy of documents and are not responsible for any discrepancies between project documents and the existing conditions.

College of San Mateo
Building 5N
Bulletin #4
 San Mateo, CA
 Developed for
 San Mateo Community College District

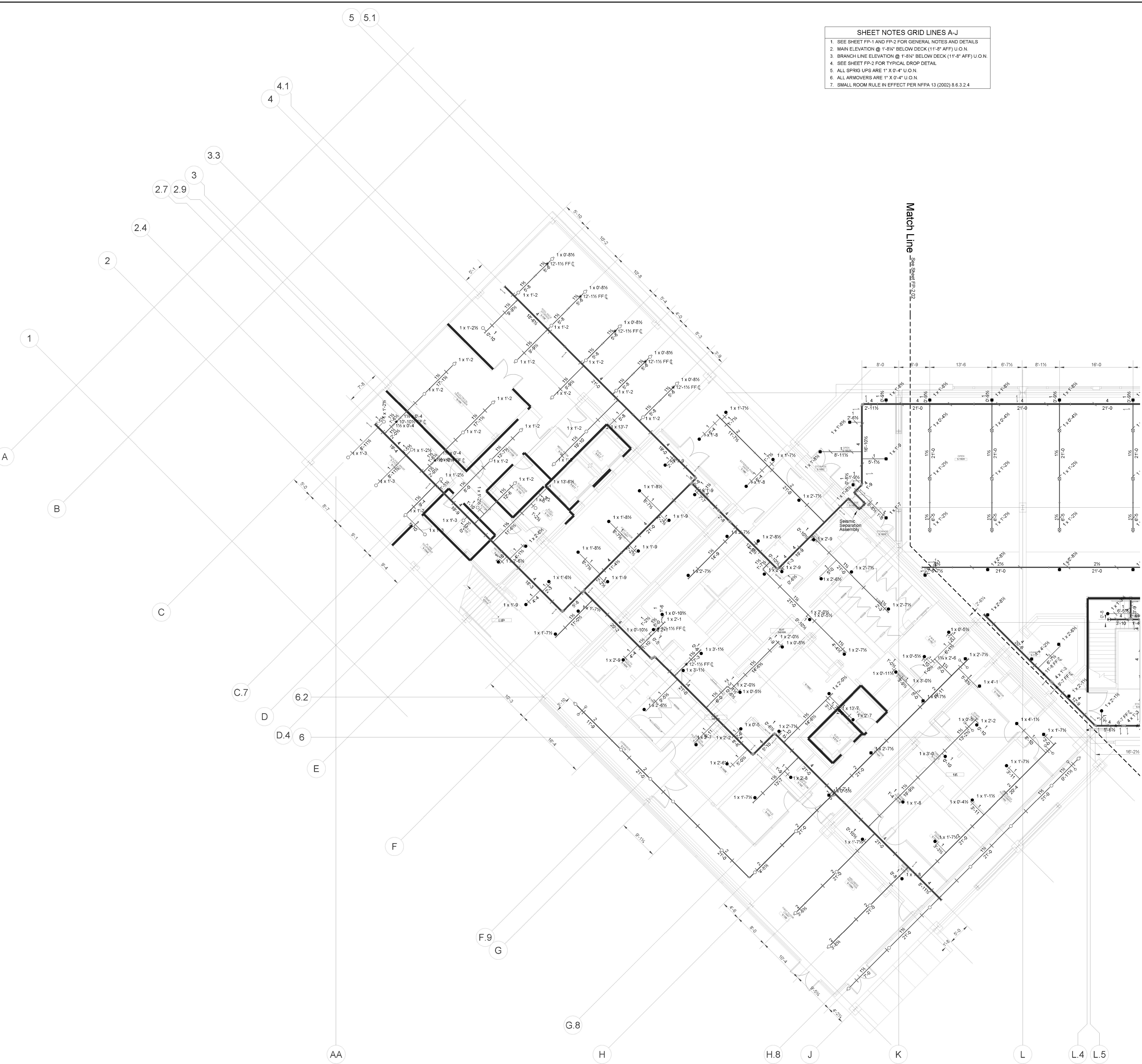
Revision Description	Date	Revision Description	Date
100% CD Set			
DSA Backup			
Coordination - Bulletin 1	4/20/09		
Coordination - Bulletin 2			

Job Number	824
Date	6-24-09
Engineer	RR
Scale	1/8" = 1'-0"
Level 1 West Piping Plan	

FP-2.1

SHEET NOTES GRID LINES A-J

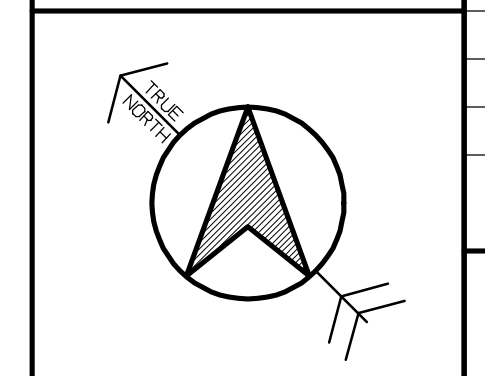
- SEE SHEET FP-1 AND FP-2 FOR GENERAL NOTES AND DETAILS
- MAIN ELEVATION @ 1'-8 1/2" BELOW DECK (11'-8" AFF) U.O.N.
- BRANCH LINE ELEVATION @ 1'-8 1/2" BELOW DECK (11'-8" AFF) U.O.N.
- SEE SHEET FP-2 FOR TYPICAL DROP DETAIL
- ALL SPRIG UPS ARE 1" X 0'-4" U.O.N.
- ALL ARMOVERS ARE 1" X 0'-4" U.O.N.
- SMALL ROOM RULE IN EFFECT PER NFPA 13 (2002) 8.6.3.2.4



Sprinkler Head Information

Symbol	Brand	Model	SN#	Description	Size	Temperature	K	Finish	Quantity
○	TY-FRB	TY1311		Standard Upright	1/2"	200°	5.6	Brass	85
⊗	TY-FRB	TY1517		EC Upright	1/2"	175°	11.2	Brass	45
●	TY-FRB	TY2311		Semi-Recessed Pendant	1/2"	155°	5.6	Chrome	82
●	TY-FRB	TY2317		EC Semi-Recessed Pendant	1/2"	155°	11.2	Chrome	42
▶	TY-FRB	TY3311		Standard Sidewall	1/2"	155°	5.6	Brass	3

Total All Sheets: 237



- SHEET NOTES GRID LINES K-R**
1. SEE SHEET FP-1 AND FP-2 FOR GENERAL NOTES AND DETAILS
 2. MAIN ELEVATION @ 1'-9 1/2" BELOW DECK (11'-8" AFF) U.O.N.
 3. BRANCH LINE ELEVATION @ 1'-9 1/2" BELOW DECK (11'-8" AFF) U.O.N.
 4. SEE SHEET FP-2 FOR TYPICAL DROP DETAIL
 5. ALL SPRIG UPS ARE 1" X 0'-4" U.O.N.
 6. ALL ARMOVERS ARE 1" X 0'-4" U.O.N.
 7. SMALL ROOM RULE IN EFFECT PER NFPA 13 (2002) 8.6.3.2.4

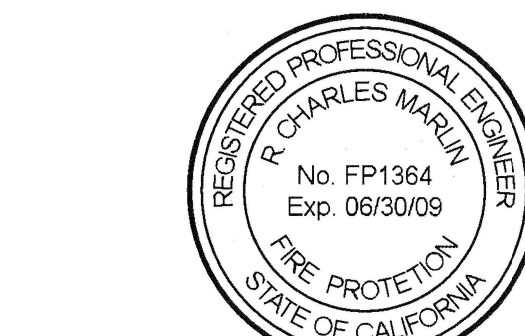


LPA Inc. | P1548 Eureka Road,
Suite 101 | Roseville, California
95661 | PP 916 772-4300 | PF
916 772-4330 | PE
lpa@lpainc.com | PW
www.lpainc.com

Kwan Henmi Architecture / Planning
456 Montgomery St., Suite 300
San Francisco, California 94104
P 415 777-4770
F 415 777-5102
W www.kwanhenmi.com

IDENTIFICATION STAMP
DIVISION OF THE
STATE ARCHITECT
APPL. 01-109870

AC _____ FLS _____ SS _____
DATE _____



AS-BUILTS

TRANSBAY FIRE PROTECTION, INC.
License No. 62778
2182 Rheem Dr. Pleasanton, CA 94588
(925) 846-9484 Fax (925) 846-9710

This and all other project documents and all ideas, aesthetics and design incorporated therein are instruments of service. All project documents are the registered property of Transbay Fire Protection, Inc. (Transbay) and cannot be used in whole or in part for any project or purpose without the written consent of Transbay. The use of any project document for any project other than that for which it was prepared is strictly prohibited. Transbay Fire Protection, Inc. is not responsible for any reproduction or modification of any project document without the written consent of Transbay. Project documents are the property of Transbay Fire Protection, Inc. and shall remain the property of Transbay Fire Protection, Inc. until they are returned to Transbay Fire Protection, Inc. in accordance with the terms of the contract. © Copyright 2008

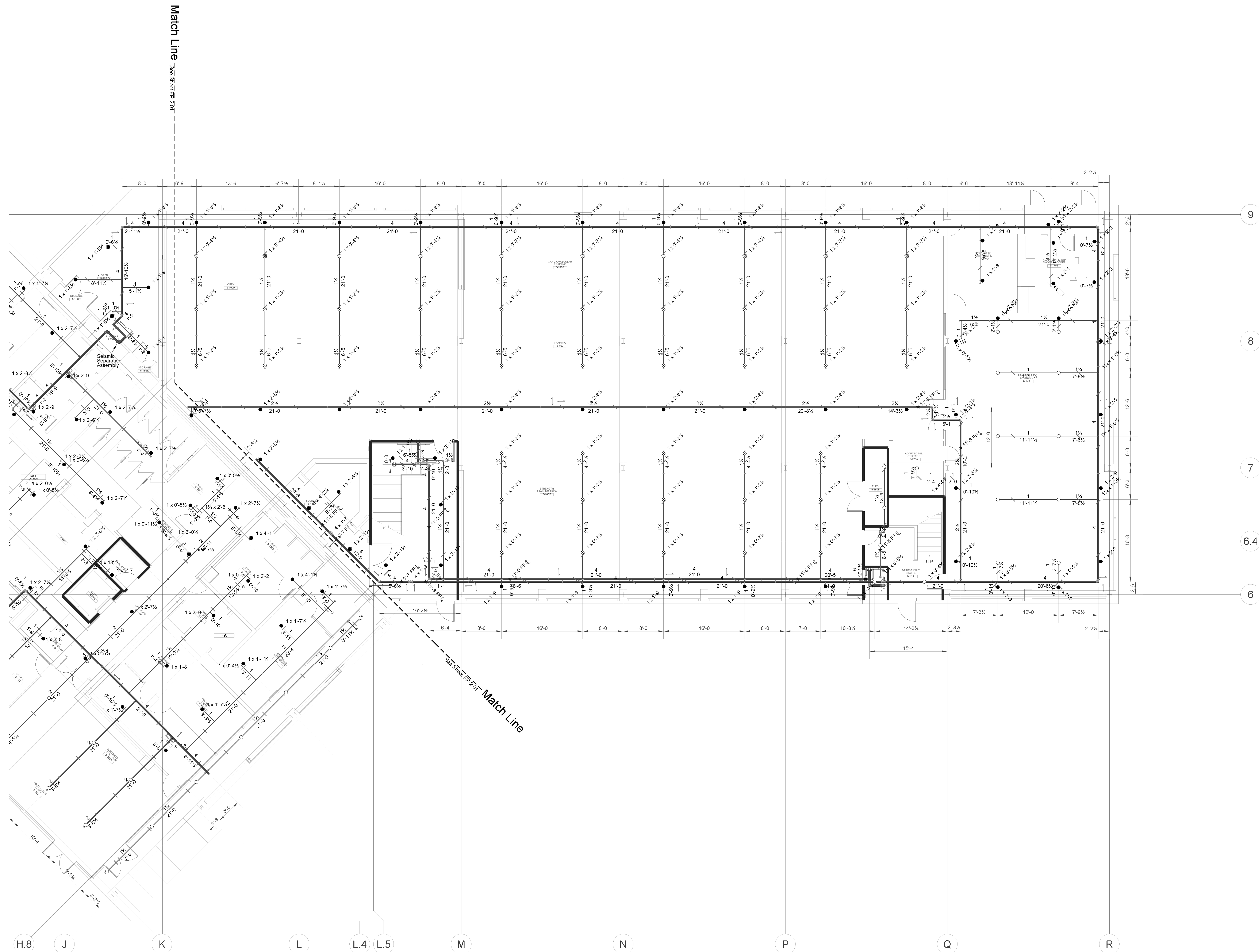
College of San Mateo
Building 5N
Bulletin #4
San Mateo, CA
Developed for
San Mateo Community College District

Revision Description	Date	Revision Description	Date
100% CD Set			
DSA Backup			
Coordination - Bulletin 2	4/3/09		
Coordination - Bulletin 2			

Job Number 824
Date 6-24-09
Engineer RR
Scale 1/8" = 1'-0"

Level 1 East Piping Plan

FP-2.2



Symbol	Brand	Model	SN #	Description	Temperature	Size	Escutcheon	Quantity	
○	TYCO	TY-FRB	TY1311	Standard Upright	172	1/2"	5.6 Brass	85	
⊗	TYCO	TY-FRB	TY1517	EC Upright	200	200"	11.2 Brass	45	
●	TYCO	TY-FRB	TY1331	Semi-Recessed Pendant	155	1/2"	5.6 Chrome	82	
●	TYCO	TY-FRB	TY1327	EC Semi-Recessed Pendant	172	1/2"	11.2 Chrome	42	
◀	TYCO	TY-FRB	TY1331	Standard Sidewall	155	1/2"	5.6 Brass	3	
								Total All Sheets	237

Standard Symbols	Sprinkler Head Symbols
<ul style="list-style-type: none"> Riser Location Hanger Two Way Brace Four Way Brace Hydraulic Node End of Line Restraint 	<ul style="list-style-type: none"> Standard Upright EC Upright Semi-Recessed Pendant EC Semi-Recessed Pendant Standard Horizontal Sidewall

Revision Description	Date	Revision Description	Date
100% CD Set			
DSA Backup			
Coordination - Bulletin 2	4/3/09		
Coordination - Bulletin 2			

Job Number 824
Date 6-24-09
Engineer RR
Scale 1/8" = 1'-0"

Level 1 East Piping Plan

FP-2.2



AS-BUILTS

This and all other project documents and all ideas, aesthetics and designs incorporated therein are instruments of service. All project documents are the registered property of Transbay Fire Protection, Inc. (Transbay) and cannot be used in whole or in part for any other project without the express written consent of Transbay. Any reproduction or modification (reissue) of any project document without the express written consent of Transbay is prohibited. Transbay shall not be held liable for any errors or omissions in this project document. The user of this project document assumes all responsibility for any errors or omissions in this project document. © Copyright 2008

College of San Mateo
Building 5N
Bulletin #4
San Mateo, CA
Developed for
San Mateo Community College District

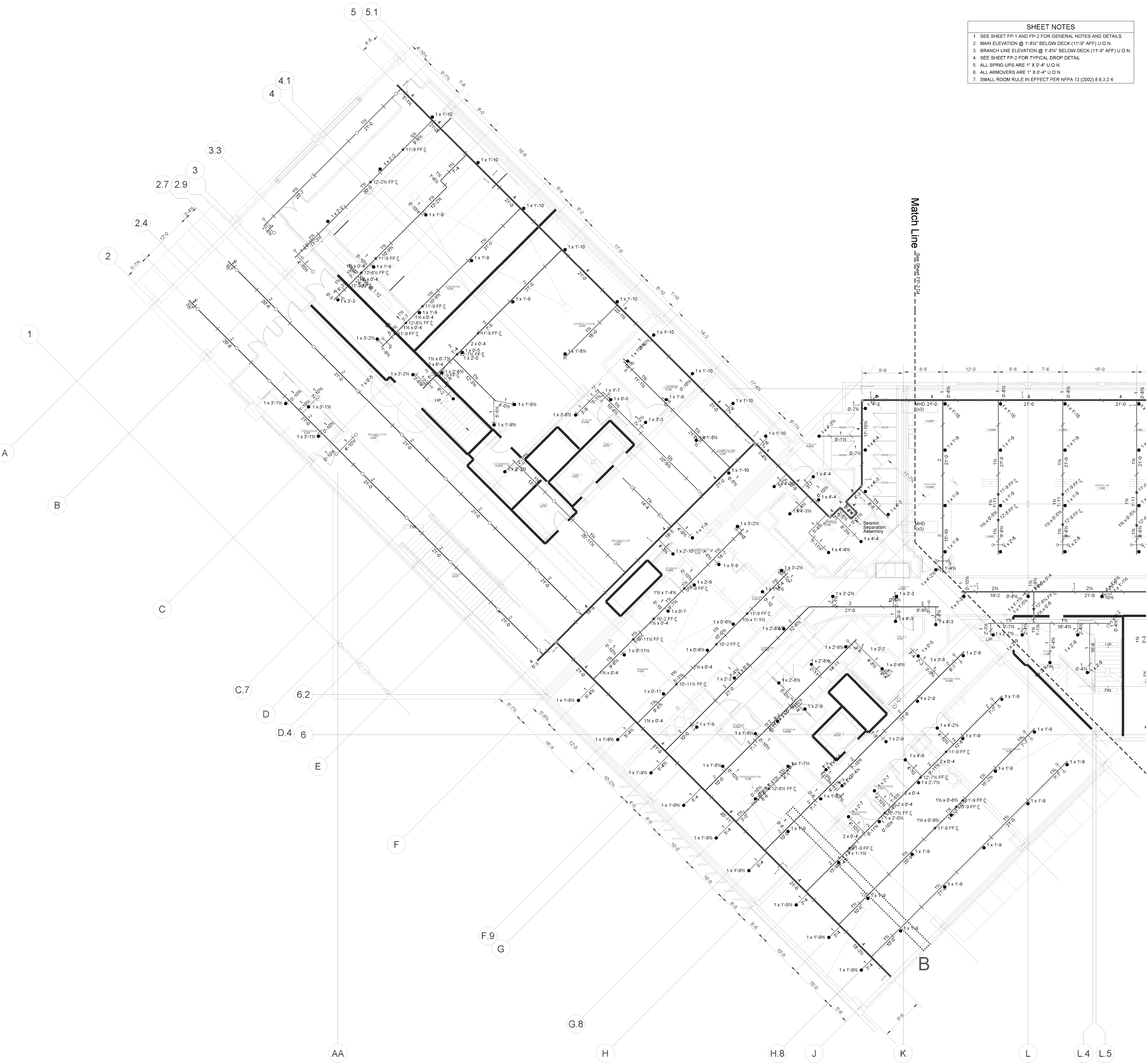
Revision Description	Date
100% CD Set	
DSA Submittal	
Coordination - Bulletin 2	4/3/09

Job Number	824
Date	6-24-09
Engineer	RR
Scale	1/8" = 1'-0"

Level 2 West Piping Plan

FP-2.3

- SHEET NOTES**
- SEE SHEET FP-1 AND FP-2 FOR GENERAL NOTES AND DETAILS
 - MAIN ELEVATION @ 1'-8 1/2" BELOW DECK (11'-9" AFF) U.O.N.
 - BRANCH LINE ELEVATION @ 1'-8 1/2" BELOW DECK (11'-9" AFF) U.O.N.
 - SEE SHEET FP-2 FOR TYPICAL DROP DETAIL
 - ALL SPRIG UPS ARE 1" X 0'-4" U.O.N.
 - ALL ARMOVERS ARE 1" X 0'-4" U.O.N.
 - SMALL ROOM RULE IN EFFECT PER NFPA 13 (2002) 8.6.3.2.4



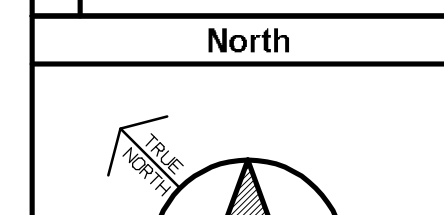
Symbol	Brand	Model	SN#	Description	Size	Temperature	K	Finish	Escutcheon	Quantity
○	TY-FRB	TY3131		Standard Upright	1/2"	200°	5.6	Brass	39	
⊗	TY-FRB	TY3231		Semi-Recessed Pendant	1/2"	155°	5.6	Chrome	106	
●	TY-FRB	TY3237		EC Semi-Recessed Pendant	1/2"	155°	11.2	Chrome	96	

Sprinkler Head Symbols

○	Standard Upright
⊗	EC Upright
●	Semi-recessed Pendant
●	EC Semi-recessed Pendant
▶	Standard Horizontal Sidewall

Standard Symbols

⊗	Riser Location
⊕	Hanger
⊕	Two Way Brace
⊕	Four Way Brace
⊕	Hydraulic Node
⊕	End of Line Restraint



Total All Sheets: 241

- SHEET NOTES**
1. SEE SHEET FP-1 AND FP-2 FOR GENERAL NOTES AND DETAILS
 2. MAIN ELEVATION @ 1'-8 1/2" BELOW DECK (11'-9" AFF) U.O.N.
 3. BRANCH LINE ELEVATION @ 1'-8 1/2" BELOW DECK (11'-9" AFF) U.O.N.
 4. SEE SHEET FP-2 FOR TYPICAL DROP DETAIL
 5. ALL SPRIG UPS ARE 1" X 0'-4" U.O.N.
 6. ALL ARMOVERS ARE 1" X 0'-4" U.O.N.
 7. SMALL ROOM RULE IN EFFECT PER NFPA 13 (2002) 8.6.3.2.4



LPA Inc. 1P1548 Eureka Road,
Suite 101 P Roseville, California
95661 P 916 772-4300 P/P
916 772-4330 P/E
lpa@lpa-inc.com P/W
www.lpa-inc.com

Kwan Henmi Architecture / Planning
456 Montgomery St., Suite 300
San Francisco, California 94104
P 415 777-4770
F 415 777-5102
W www.kwanhenmi.com

IDENTIFICATION STAMP
DIVISION OF THE
STATE ARCHITECT
APPL. 01-109870

AC _____ FLS _____ SS _____
DATE _____



AS-BUILTS

TRANSBAY FIRE PROTECTION, INC.
License No. 62778
2182 Rheem Dr. Pleasanton, CA 94588
(925) 846-9484 Fax (925) 846-9710

This and all other project documents and all ideas, aesthetics and design incorporated therein are instruments of service. All project documents are the registered property of Transbay Fire Protection, Inc. (Transbay) and cannot be lawfully used in whole or in part for any purpose not expressly authorized by Transbay. Any reproduction or modification of any project document without the written consent of Transbay is prohibited. Transbay shall not be held liable for any errors or omissions in any project document. Use, reproduction or modification of any project document without the written consent of Transbay is prohibited. All other rights are reserved. Transbay, its officers, directors, agents or employees shall not be held liable for any errors or omissions in any project document.

Project documents describe design intent of work and are not a representation of as-built or existing conditions. Kwan Henmi and Kwan Henmi's Consultants make no representation concerning the accuracy of documents and are not responsible for any discrepancies between project documents and the existing conditions.

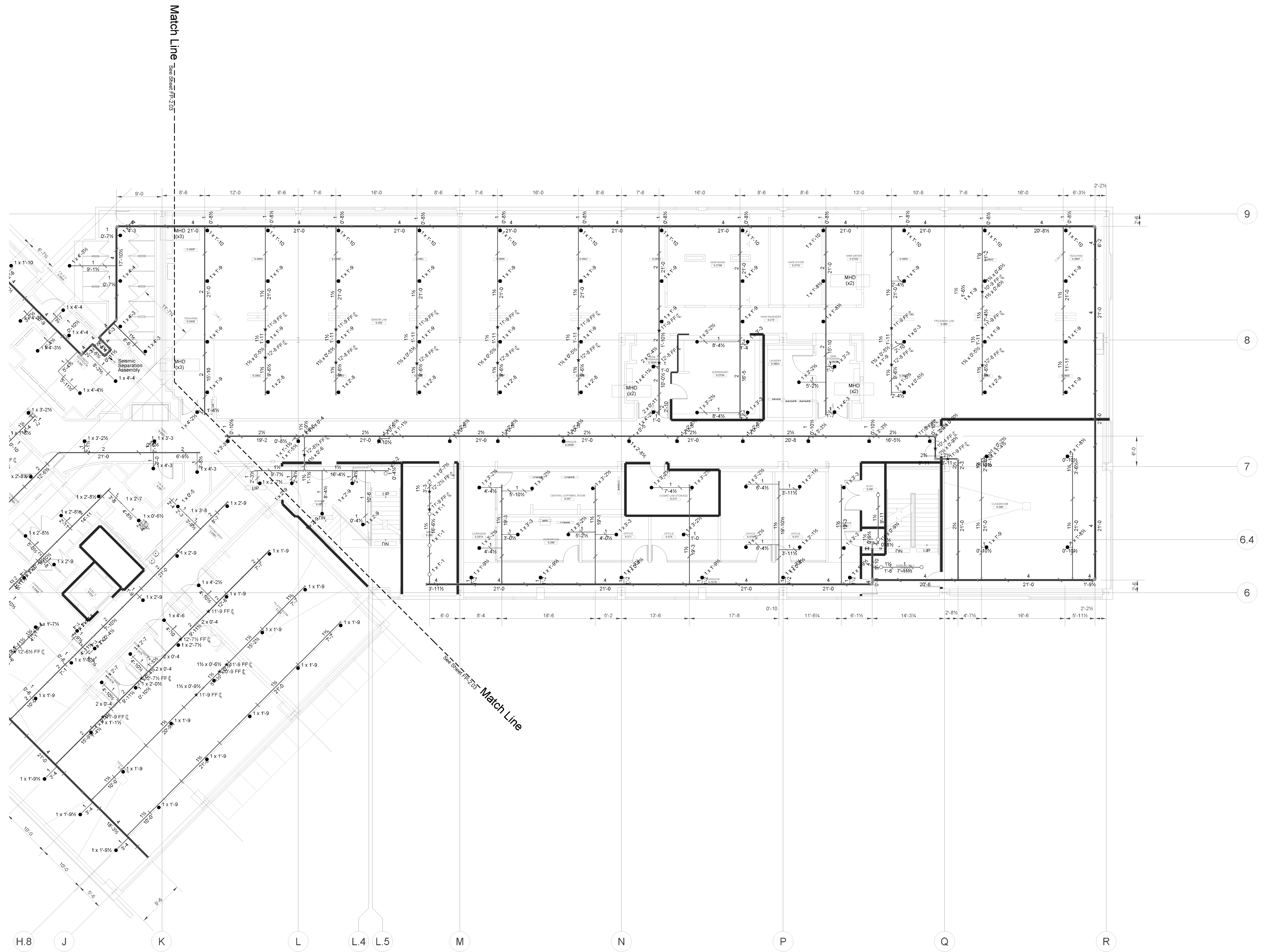
© Copyright 2008

College of San Mateo
Building 5N
Bulletin #4
San Mateo, CA
Developed for
San Mateo Community College District

Revision Description	Date	Revision Description	Date
100% CD Set			
DSB Backcheck			
Coordination - Bulletin 2	4/2/09		

Job Number	824
Date	6-24-09
Engineer	RR
Scale	1/8" = 1'-0"

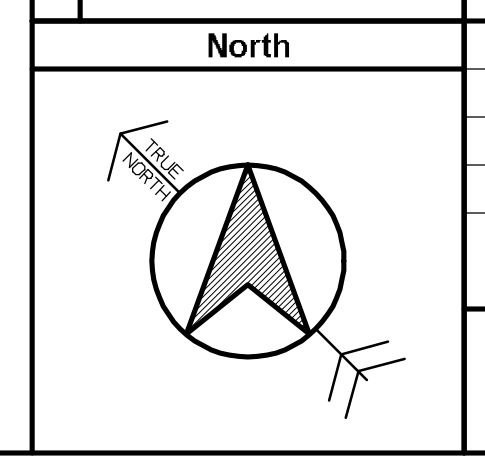
Level 2 East Piping Plan
FP-2.4



Symbol	Brand	Model	SN #	Description	Temperature	Size	Escutcheon	Quantity
○	TY-FRB	TY2321		Standard Upright	200°	1/2"	5.6 Brass	39
⊗	TY-FRB	TY2321		Semi-Recessed Pendant	155°	1/2"	5.6 Chrome	106
●	TY-FRB	TY2327		EC Semi-Recessed Pendant	155°	1/2"	11.2 Chrome	96

Standard Symbols	Revision Description
○	Standard Upright
⊗	EC Upright
●	Semi-recessed Pendant
●	EC Semi-recessed Pendant
○	Standard Horizontal Sidewall

Standard Symbols	Revision Description
○	Riser Location
○	Hanger
+	Two Way Brace
+	Four Way Brace
○	Hydraulic Node
○	End of Line Restraint



- SHEET NOTES**
- SEE SHEET FP-1 AND FP-2 FOR GENERAL NOTES AND DETAILS.
 - MAIN ELEVATION WEST OF 5.1 LINE @ 1'-8 1/4" BELOW DECK (11'-9" AFF) U.O.N.
 - BRANCH LINE ELEVATION WEST OF 5.1 LINE @ 1'-8 1/4" BELOW DECK (11'-9" AFF) U.O.N.
 - MAIN ELEVATION EAST OF 5.1 LINE @ 1'-6 1/4" BELOW DECK (11'-11" AFF) U.O.N.
 - BRANCH LINE ELEVATION EAST OF 5.1 LINE @ 1'-6 1/4" BELOW DECK (11'-11" AFF) U.O.N.
 - SEE SHEET FP-2 FOR TYPICAL DROP DETAIL.
 - ALL SPRING UPS ARE 1" X 3/4" U.O.N.
 - ALL ARMOVERS ARE 1" X 3/4" U.O.N.
 - SMALL ROOM RULE IN EFFECT PER NFPA 13 (2002) 8.6.3.2.4



LPA Inc. | P1548 Eureka Road,
Suite 101 | PRoseville, California
95661 | PP 916 772-4300 | PF
916 772-4330 | PE
lpa@lpainc.com | PW
www.lpainc.com

Kwan Henmi Architecture / Planning
456 Montgomery St., Suite 300
San Francisco, California 94104
P 415 777-4770
F 415 777-5102
W www.kwanhenmi.com

IDENTIFICATION STAMP
DIVISION OF THE
STATE ARCHITECT
APPL. 01-109870

AC _____ FLS _____ SS _____
DATE _____



AS-BUILTS

TRANSBAY FIRE PROTECTION, INC.
License No. 62778
2182 Rheem Dr. | Pleasanton, CA 94588
(925) 846-9484 | Fax (925) 846-9710

This and all other project documents and all ideas, aesthetics and designs incorporated therein are instruments of service. All project documents are the registered property of Transbay Fire Protection, Inc. (Transbay) and cannot be used, copied, reproduced, or transmitted in any form or by any means, electronic, mechanical, photocopying, recording, or by any information storage and retrieval system, without the prior written permission of Transbay. Any unauthorized use, reproduction or modification of any project document is strictly prohibited. Transbay shall not be held liable for any damages, claims, or liabilities arising directly or indirectly from project document misuse.

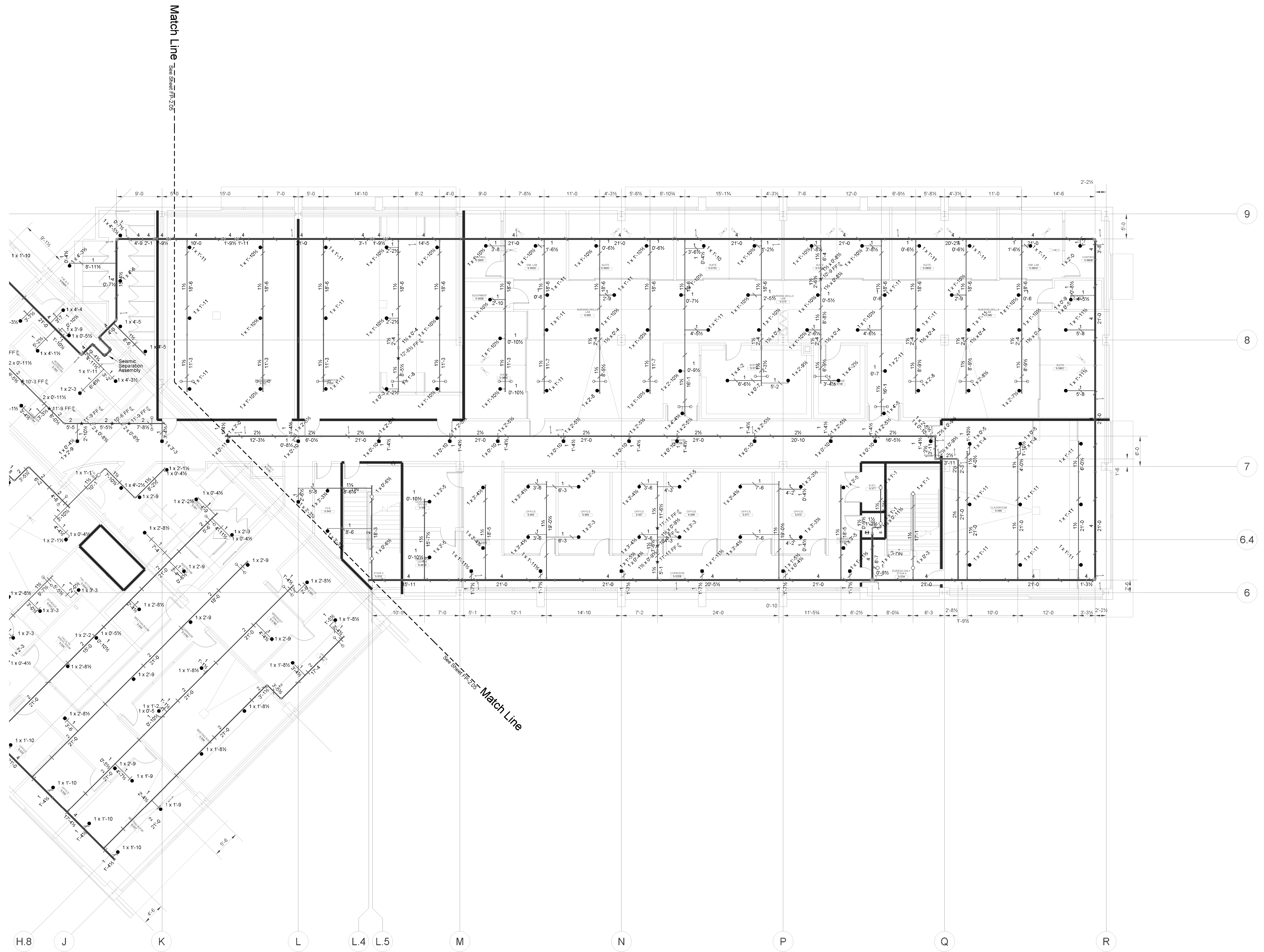
Project documents can be design intent of work and are not a representation of as-built or existing conditions. Kwan Henmi and Kwan Henmi's Consultants make no representations concerning the accuracy of documents and are not responsible for any discrepancies between project documents and the existing conditions.
© Copyright 2008

College of San Mateo
Building 5N
Bulletin #4
San Mateo, CA
Developed for
San Mateo Community College District

Revision Description	Date	Revision Description
100% CD Set		
DSA Backup		
Coordination - Bulletin 2	4/2/09	

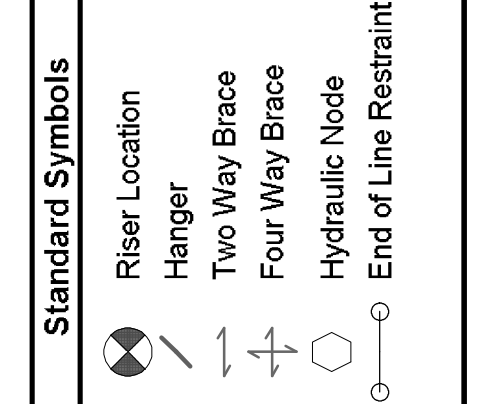
Job Number	824
Date	6-24-09
Engineer	RR
Scale	1/8" = 1'-0"

Level 3 East Piping Plan
FP-2.6



Symbol	Brand	Model	SIN #	Description	Temperature	Size	Escutcheon	Quantity
○	TYO	TY-FRB	TY2321	Standard Upright	200°	1/2"	5.6 Brass	8
⊗	TYO	TY-FRB	TY2321	Semi-Recessed Pendant	155°	1/2"	5.6 Chrome	172
●	TYO	TY-FRB	TY2327	EC Semi-Recessed Pendant	155°	1/2"	11.2 Chrome	90

Standard Symbols	Sprinkler Head Symbols
○ Riser Location	○ Standard Upright
⊗ Hanger	⊗ EC Upright
⊕ Two Way Brace	● Semi-recessed Pendant
⊖ Four Way Brace	● EC Semi-recessed Pendant
○ Hydraulic Node	● Standard Horizontal Sidewall
○ End of Line Restraint	



Total AI Sheets: 270



AS-BUILTS

TRANSBAY FIRE PROTECTION, INC.
 License No. 62778
 2182 Rheem Dr. Pleasanton, CA 94588
 (925) 846-9484 Fax (925) 846-9710

This and all other project documents and all ideas, aesthetics and designs incorporated herein are instruments of service. All project documents are the registered property of Kwan Henmi Architecture/Planning, Inc. (Kwan Henmi) and cannot be used in whole or in part for any other project without the written consent of Kwan Henmi. The contractual agreement between Kwan Henmi and the Client (Kwan Henmi hereby gives formal notice that any such project document (i.e. reproduction or modification thereof) is not only prohibited but automatically voids all parties involved with reason to fully indemnify and defend Kwan Henmi and Kwan Henmi's Consultant from the financial and legal consequences of any such reproduction or modification. Any other agent of Kwan Henmi, architect, engineer or contractor who knowingly or unknowingly reproduces or modifies any project document shall be held liable for any and all damages. © Copyright 2008

Project documents describe design intent of work and are not a representation of as-built or existing conditions. Kwan Henmi and Kwan Henmi's Consultant make no representations concerning the accuracy of documents and are not responsible for any discrepancies between project documents and the existing conditions.

College of San Mateo
Building 5N
Bulletin #4
 San Mateo, CA
 Developed for
 San Mateo Community College District

Revision Description	Date	Revision Description	Date
100% CD Set			
DSA Backup			
Coordination - Bulletin 1	4/3/09		
Coordination - Bulletin 2			

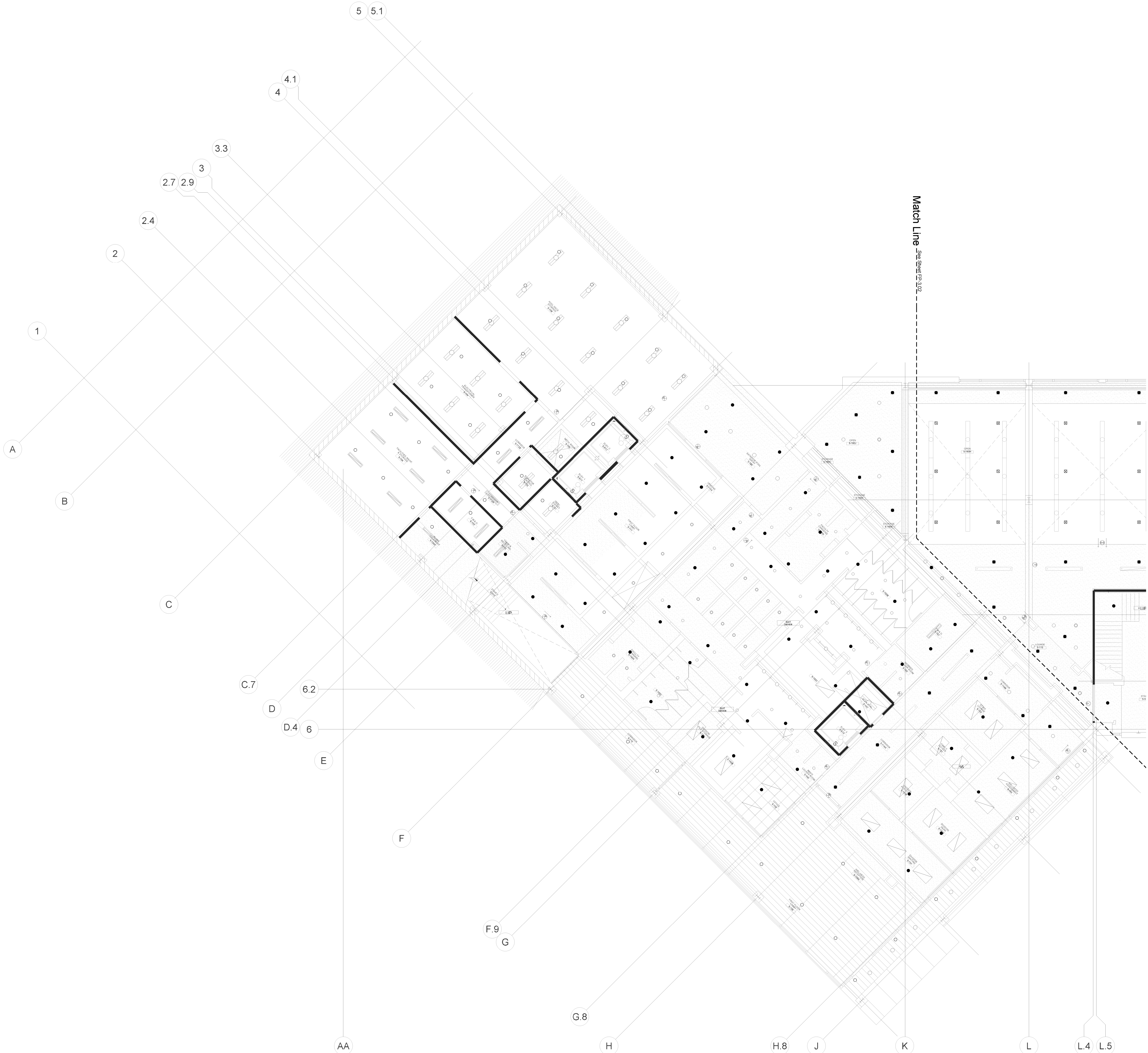
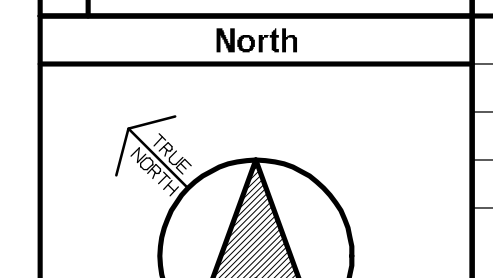
Job Number: 824
 Date: 6-24-09
 Engineer: RR
 Scale: 1/8" = 1'-0"
 Level 1 West Reflected Ceiling Plan

FP-3.1

Symbol	Brand	Model	SIN #	Description	Size	Temperature	K	Finish	Escutcheon	Quantity	
○	TYCO	TY-FRB	TY3151	Standard Upright	1/2"	200°	5.6	Brass	nia	85	
⊗	TYCO	TY-FRB	TY3157	EC Upright	1/2"	200°	11.2	Brass	nia	45	
●	TYCO	TY-FRB	TY3231	Semi-Recessed Pendant	1/2"	155°	5.6	Chrome	Chrome	82	
●	TYCO	TY-FRB	TY3237	EC Semi-Recessed Pendant	1/2"	155°	11.2	Chrome	Chrome	42	
▶	TYCO	TY-FRB	TY3331	Standard Sidewall	1/2"	155°	5.6	Brass	nia	3	
										Total All Sheets	237

Standard Symbols	Sprinkler Head Symbols
<ul style="list-style-type: none"> Riser Location Hanger Two Way Brace Four Way Brace Hydraulic Node End of Line Restraint 	<ul style="list-style-type: none"> Standard Upright EC Upright Semi-recessed Pendant EC Semi-recessed Pendant Standard Horizontal Sidewall

Revision Description	Date	Revision Description	Date
100% CD Set			
DSA Backup			
Coordination - Bulletin 1	4/3/09		
Coordination - Bulletin 2			





AS-BUILTS

TRANSBAY FIRE PROTECTION, INC.
License No. 62778
2182 Rheem Dr. Pleasanton, CA 94588
(925) 846-9484 Fax (925) 846-9710

This and all other project documents and all ideas, aesthetics and designs incorporated therein are instruments of service. All project documents are the registered property of Kwan Henmi Architecture/Planning, Inc. (Kwan Henmi) and cannot be further used in whole or in part for any project or projects without the written consent of Kwan Henmi. Any reproduction or modification of any project document (i.e. reproduction or modification) without the written consent of Kwan Henmi is strictly prohibited. Kwan Henmi shall not be held responsible for any errors or omissions in this document. Kwan Henmi shall not be held responsible for any errors or omissions in this document. Kwan Henmi shall not be held responsible for any errors or omissions in this document. © Copyright 2008

College of San Mateo
Building 5N
Bulletin #4
San Mateo, CA
Developed for
San Mateo Community College District

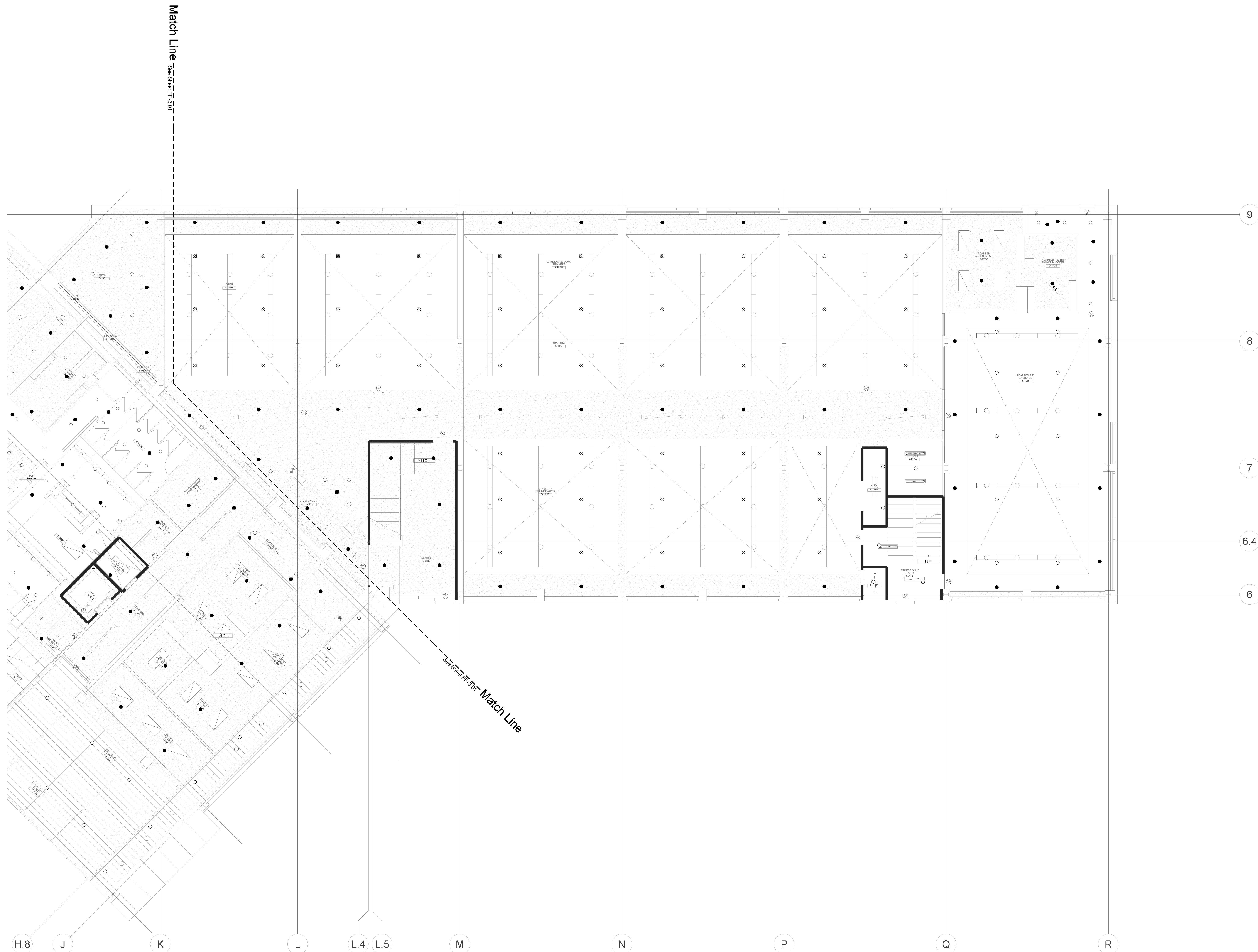
Revision Description	Date

Revision Description	Date

Revision Description	Date

Job Number	824
Date	6-24-09
Engineer	RR
Scale	1/8" = 1'-0"

Level 1 East Reflected Ceiling Plan
FP-3.2



Sprinkler Head Symbols		Sprinkler Head Information	
○	Standard Upright	TY3131	Standard Upright
⊗	EC Upright	TY1517	EC Upright
●	Semi-recessed Pendant	TY3231	Semi-recessed Pendant
●	EC Semi-recessed Pendant	TY3237	EC Semi-recessed Pendant
▶	Standard Horizontal Sidewall	TY3331	Standard Sidewall
⊕	Riser Location		
⊖	Hanger		
⊕	Two Way Brace		
⊖	Four Way Brace		
⊕	Hydraulic Node		
⊖	End of Line Restraint		

Symbol	Brand	Model	S/N #	Description	Size	Temperature (K)	Finish	Escutcheon	Quantity	
○	Tyco	TY-FRB	TY3131	Standard Upright	1/2"	200°	5.6 Brass	ra	85	
⊗	Tyco	TY-FRB	TY1517	EC Upright	1/2"	200°	11.2 Brass	ra	45	
●	Tyco	TY-FRB	TY3231	Semi-recessed Pendant	1/2"	155°	5.6 Chrome	ra	82	
●	Tyco	TY-FRB	TY3237	EC Semi-recessed Pendant	1/2"	155°	11.2 Chrome	ra	42	
▶	Tyco	TY-FRB	TY3331	Standard Sidewall	1/2"	155°	5.6 Brass	ra	3	
									Total All Sheets	227



AS-BUILTS

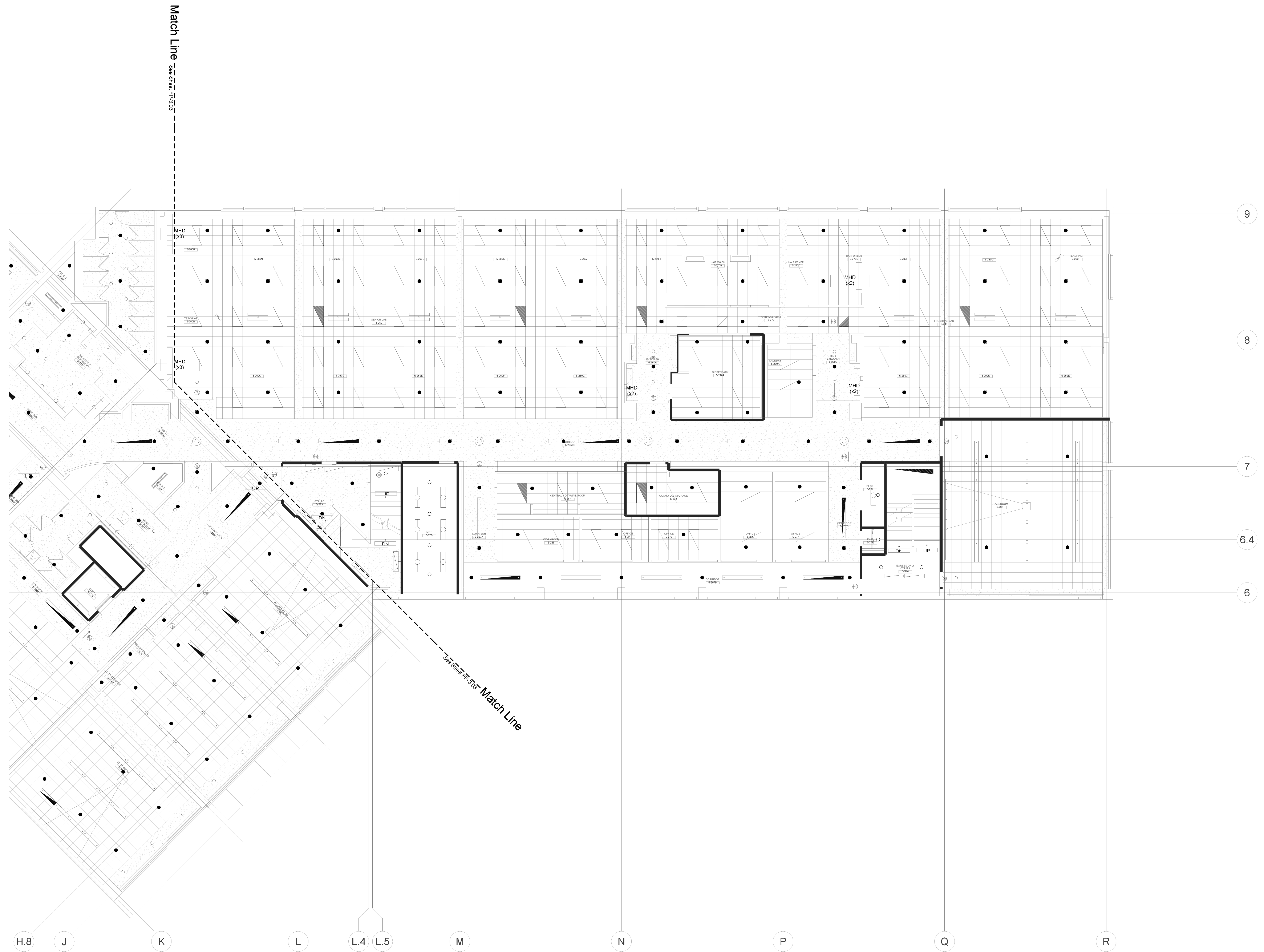
This and all other project documents and all ideas, aesthetics and designs incorporated therein are instruments of service of Transbay Fire Protection, Inc. (Transbay) and cannot be fully used in whole or in part for any project or project without the written consent of Transbay. Transbay hereby gives Transbay's consent that each project document (i.e. reproduction or modification thereof) is not only allowed but is required to be used in the project. Project documents cannot be design intent of work and are not a representation of the field or working conditions. Kwan Henmi and Kwan Henmi's Consultants make no representations concerning the accuracy of documents and are not responsible for any discrepancies between project documents and the existing conditions.
© Copyright 2008

College of San Mateo
Building 5N
Bulletin #4
San Mateo, CA
Developed for
San Mateo Community College District

Revision Description	Date	Revision Description	Date
100% CD Set			
DSA Backup			
Coordination - Bulletin 2	4/2/09		
Coordination - Bulletin 2			

Job Number	824
Date	6-24-09
Engineer	RR
Scale	1/8" = 1'-0"
Level 2 East Reflected Ceiling Plan	

FP-3.4



Symbol	Brand	Model	SN #	Description	Size	Temperature	K	Finish	Escutcheon	Quantity	
○	TYCO	TY-FRB	TY2311	Standard Upright	1/2"	200°	5.6	Brass	39		
⊗	TYCO	TY-FRB	TY2321	Semi-Recessed Pendant	1/2"	155°	5.6	Chrome	106		
●	TYCO	TY-FRB	TY2327	EC Semi-Recessed Pendant	1/2"	155°	11.2	Chrome	96		
										Total All Sheets	241

Standard Symbols	Sprinkler Head Symbols
○ Riser Location	○ Standard Upright
⊗ Hanger	⊗ EC Upright
⊕ Two Way Brace	● Semi-Recessed Pendant
⊖ Four Way Brace	● EC Semi-Recessed Pendant
○ Hydraulic Node	▶ Standard Horizontal Sidewall
○ End of Line Restraint	

North	Job Number	824
	Date	6-24-09
	Engineer	RR
	Scale	1/8" = 1'-0"
	Level 2 East Reflected Ceiling Plan	



AS-BUILTS

TRANSBAY FIRE PROTECTION, INC.
License No. 62778
2182 Rheem Dr. Pleasanton, CA 94588
(925) 846-9484 Fax (925) 846-9710

This and all other project documents and all ideas, aesthetics and designs incorporated therein are instruments of service. All project documents are the registered property of Kwan Henmi Architecture/Planning, Inc. (Kwan Henmi) and cannot be lawfully used in whole or in part for any other project without the express written consent of Kwan Henmi. Any reproduction or modification (re-use) of any project document is strictly prohibited. Kwan Henmi and Kwan Henmi's Consultants make no representation concerning the accuracy of documents and are not responsible for any discrepancies between project documents and the existing conditions.
© Copyright 2008

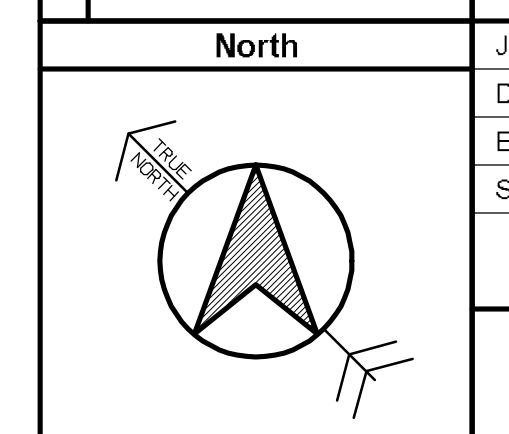
College of San Mateo
Building 5N
Bulletin #4
San Mateo, CA
Developed for
San Mateo Community College District

Revision Description	Date	Revision Description	Date
100% CD Set			
DSA Backcheck			
Coordination Revisions	4/3/09		
Coordination - Bulletin 2			

Job Number	824
Date	6-24-09
Engineer	RR
Scale	1/8" = 1'-0"
Level 3 West Reflected Ceiling Plan	

FP-3.5

Standard Symbols		Sprinkler Head Symbols		Sprinkler Head Information	
	Riser Location		Standard Upright	Size	200"
	Hanger		EC Upright	Temp	155°
	Two Way Brace		Semi-recessed Pendant	Finish	5.6 Chrome
	Four Way Brace		EC Semi-recessed Pendant	Escutcheon	8.0 Chrome
	Hydraulic Node		Standard Horizontal Sidewall	Quantity	8
	End of Line Restraint				



Total AI Sheets: 270



AS-BUILTS

TRANSBAY FIRE PROTECTION, INC.
License No. 62778
2182 Rheem Dr. Pleasanton, CA 94588
(925) 846-9484 Fax (925) 846-9710

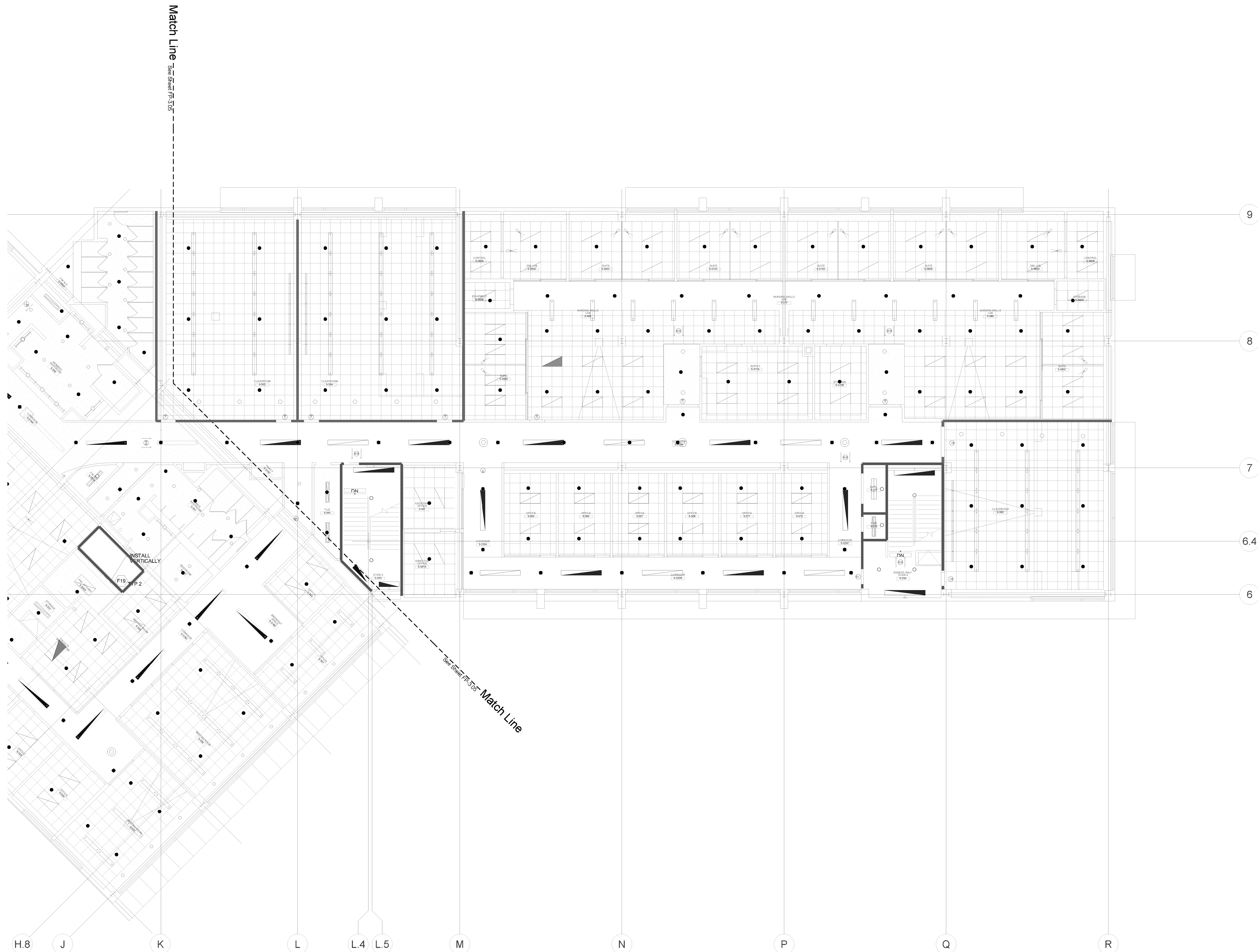
This and all other project documents and all ideas, aesthetics and designs incorporated herein are instruments of service. All project documents are the registered property of Kwan Henmi Architecture / Planning, Inc. (Kwan Henmi) and cannot be fully used in whole or in part for any project or project modification without the written consent of Kwan Henmi Architecture / Planning, Inc. The contractual agreement between Kwan Henmi and the Client, Kwan Henmi Architecture / Planning, Inc., is the only document that governs the project. This document is not intended to be a contract and is not intended to be used in lieu of a contract. Kwan Henmi and Kwan Henmi's Consultants make no representation concerning the accuracy of documents and are not responsible for any discrepancies between project documents and the existing conditions.
© Copyright 2008

College of San Mateo
Building 5N
Bulletin #4
San Mateo, CA
Developed for
San Mateo Community College District

Revision Description	Date	Revision Description	Date
100% CD Set			
DSA Backcheck			
Coordination - Bulletin 2	4/2/09		
Coordination - Bulletin 2			

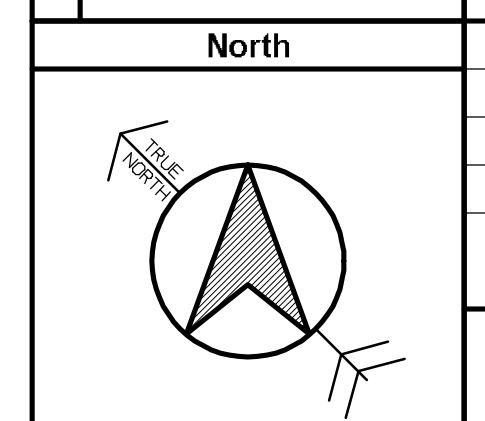
Job Number	824
Date	6-24-09
Engineer	RR
Scale	1/8" = 1'-0"
Level 3 East Reflected Ceiling Plan	

FP-3.6



Sprinkler Head Information		Sprinkler Head Symbols	
Symbol	Brand / Model	Symbol	Revision Description
○	TY-FRB	○	Standard Upright
⊗	TY-FRB	⊗	EC Upright
●	TY-FRB	●	Semi-recessed Pendant
●	TY-FRB	●	EC Semi-recessed Pendant
●	TY-FRB	●	Standard Horizontal Sidewall

Standard Symbols	
○	Riser Location
○	Hanger
○	Two Way Brace
○	Four Way Brace
○	Hydraulic Node
○	End of Line Restraint



Match Line
Same Standard as FP-3.5

Same Standard as Match Line

H.8 J K L L.4 L.5 M N P Q R

6 6.4 7 8 9