



SAN MATEO COUNTY
COMMUNITY COLLEGE DISTRICT

FACILITIES PLANNING,
MAINTENANCE & OPERATIONS

“Facilities Excellence”

College of San Mateo Health & Wellness, Building 5 Locker Rooms Renovation Project

College of San Mateo



Pre Bid Conference September 21, 2012





SAN MATEO COUNTY
COMMUNITY COLLEGE DISTRICT

FACILITIES PLANNING,
MAINTENANCE & OPERATIONS

“Facilities Excellence”

- Welcome and Introductions
- Pre-Bid Conference Administration
- District Website Navigation
- Contract Documents
- Project Schedule
- Project Overview
- Occupied Campus Coordination Requirements
- Project Labor Stabilization Agreement
- Question & Answer – Walk Project Site



Agenda





SAN MATEO COUNTY
COMMUNITY COLLEGE DISTRICT

FACILITIES PLANNING,
MAINTENANCE & OPERATIONS

“Facilities Excellence”

- **José Nuñez**, Vice Chancellor, Facilities Planning, Maintenance & Operations, SMCCCD
- **Tom Bauer**, Vice Chancellor, Auxiliary Services and Enterprise Operations, SMCCCD
- **Jennifer James**, Project Coordinator, FPMO
- **Matt Cadile and Diana Thomas**, SMAC/Medifit Corporate Services
- **Karen Powell**, Facilities Operations Manager, CSM
- **Phil Fong**, Facilities Chief Engineer, CSM
- **Peter Hempel**, Construction Manager, SMC
- **Sajid Sulaiman**, Constr. Project Manager, SMC



Owner Team





SAN MATEO COUNTY
COMMUNITY COLLEGE DISTRICT

FACILITIES PLANNING,
MAINTENANCE & OPERATIONS

“Facilities Excellence”

- **Sally Swanson**, CEO, Sally Swanson Architects, Inc.
- **Carlos Vellila**, Director of Design, Sally Swanson Architects, Inc.
- **Kathleen Wong**, Architect, Sally Swanson Architects, Inc.
- **James Fruit**, Sr. Technical Architect, Sally Swanson Architects, Inc.
- **Aaron Dodge**, CIS Inc., Inspector of Record



Consultant Team

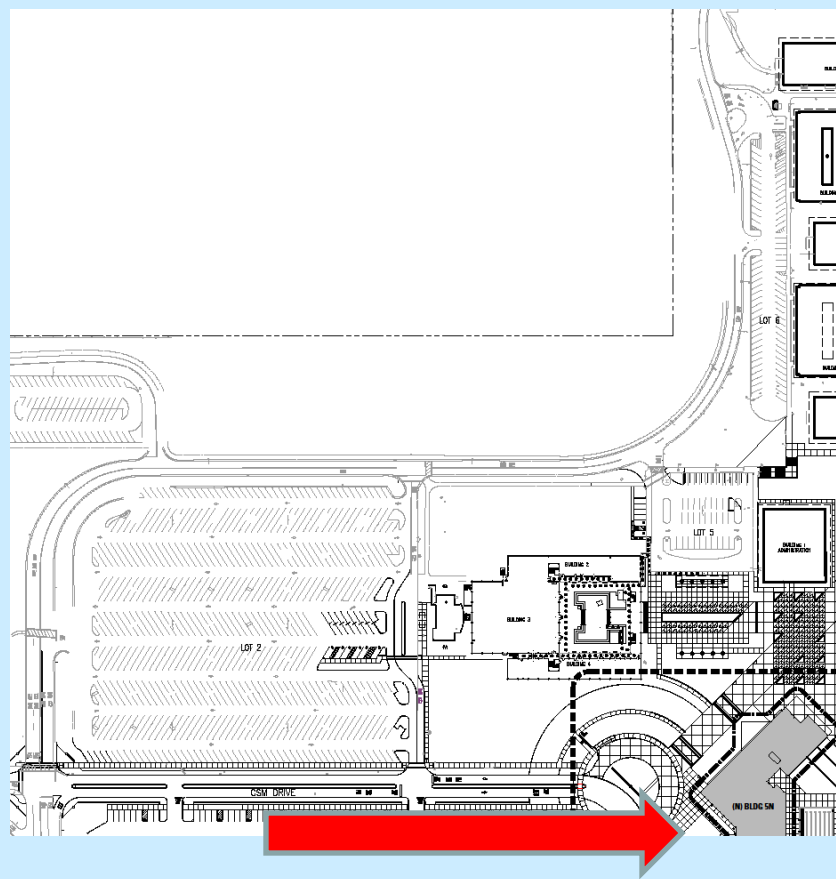




SAN MATEO COUNTY
COMMUNITY COLLEGE DISTRICT

FACILITIES PLANNING,
MAINTENANCE & OPERATIONS

“Facilities Excellence”



CSM – Building 5 area





SAN MATEO COUNTY
COMMUNITY COLLEGE DISTRICT

FACILITIES PLANNING,
MAINTENANCE & OPERATIONS

“Facilities Excellence”

- **Mandatory Conference (for prime bidders):**
 - Friday, September 21, 2012; 2:00 pm
- **Please Sign In before leaving today**
 - Attendance List will be posted to the web
- **Pre-Bid Conference Attendance Receipt**
- **Qualified Bidders**
 - Prime bidder must be an B Licensed contractor listed on SMCCCD 2012 Pre-Qualified Contractors List
<http://www.smccd.edu/accounts/smccd/departments/facilities/PrequalCC.shtml>



Pre-Bid Conference Administration



SAN MATEO COUNTY
COMMUNITY COLLEGE DISTRICT

FACILITIES PLANNING,
MAINTENANCE & OPERATIONS

“Facilities Excellence”

- District Website (District / College general):
www.smccd.edu
- Business Opportunities (Construction related):
<http://www.smccd.edu/accounts/smccd/departments/facilities/CMBusOps.shtml>
- Project Documents Website (Project related):
[http://sharepoint.smccd.edu/SiteDirectory/CPD/CPD%20Downloads/Forms/AllItems.aspx?RootFolder=/SiteDirectory/CPD/CPD Downloads/CSM/B5 1st Floor Locker Rooms Renovation&FolderCTID=&View={6FB13571-A71B-415B-9358-079D559BE0B5}](http://sharepoint.smccd.edu/SiteDirectory/CPD/CPD%20Downloads/Forms/AllItems.aspx?RootFolder=/SiteDirectory/CPD/CPD%20Downloads/CSM/B5%201st%20Floor%20Locker%20Rooms%20Renovation&FolderCTID=&View={6FB13571-A71B-415B-9358-079D559BE0B5})



District Website Navigation



SAN MATEO COUNTY
COMMUNITY COLLEGE DISTRICT

FACILITIES PLANNING,
MAINTENANCE & OPERATIONS

“Facilities Excellence”

- Project **Contract Documents** are available at ARC/ Elite reprographics for a fee:
 - (415) 957-1234 or <http://www.e-arc.com/locations/303>
- ARC PlanWell Public Planroom website location: https://order.e-arc.com/arcEOC/PWELL_Main.asp?mem=23
- CSM B5 is in the Public Planroom https://order.e-arc.com/arcEOC/Pwell_Project_Main.asp?show=yes&SessionFlag=Y&pub=23-1-8862
- Project **Contract Documents** and **Reference Documents** are also available at the District project website.



Bid Documents





SAN MATEO COUNTY
COMMUNITY COLLEGE DISTRICT

FACILITIES PLANNING,
MAINTENANCE & OPERATIONS

“Facilities Excellence”

- **Legal Advertisements:**
 - September 17 & 24, 2012
- **Bid Period:**
 - September 17, 2012 – October 1, 2012
- **Last RFI Accepted:**
 - 5 pm Monday, September 24, 2012
- **Final Addenda issued:**
 - 5 pm Wednesday, September 26, 2012
- **Bid Submittal: Monday, October 1, 2012**
 - Bids will accepted until, and *no later*, than 2:00 pm
 - Bids will be accepted at CSM Building 12, Room #177



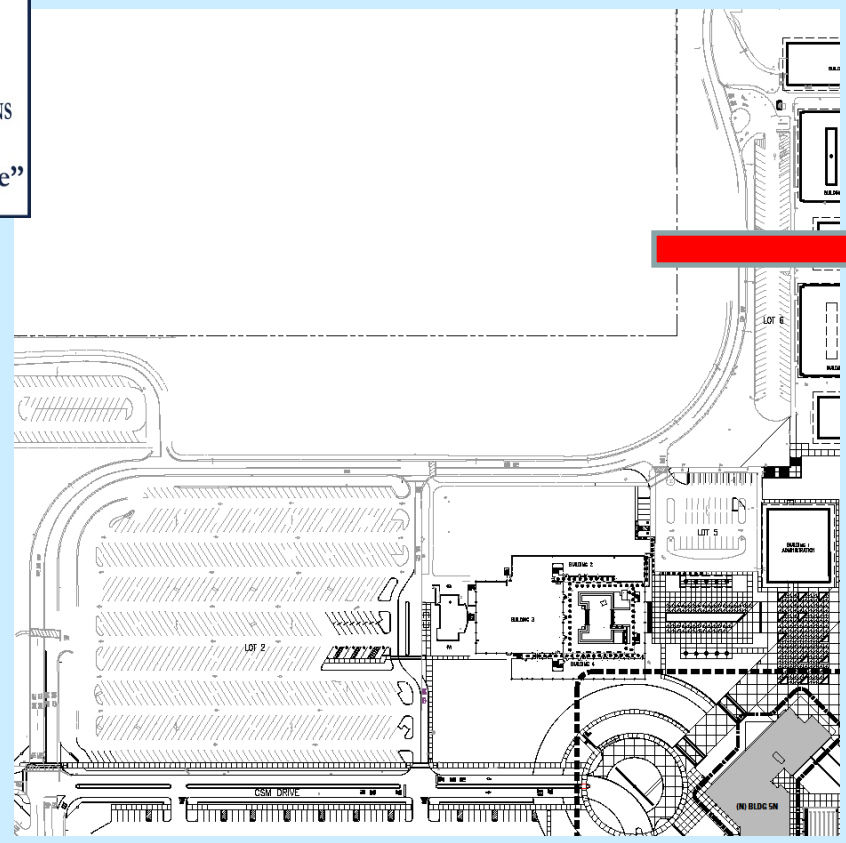
Bid Schedule



SAN MATEO COUNTY
COMMUNITY COLLEGE DISTRICT

FACILITIES PLANNING,
MAINTENANCE & OPERATIONS

“Facilities Excellence”



Bid delivery map





SAN MATEO COUNTY
COMMUNITY COLLEGE DISTRICT

FACILITIES PLANNING,
MAINTENANCE & OPERATIONS

“Facilities Excellence”

- **Bid Receipt Log web posted** October 2, 2012
- **Notice of Intent to Award posted:** ~October 2, 2012
- **Bid Protest Period:** October 1 – October 5, 2012
- **SMCCCD Board of Trustees Approval of Contract Award:** October 10, 2012
- **Notice of Award Issued** ~October 11, 2012
- **Notice to Proceed Issued** ~October 23, 2012



Bid & Award Schedule





- **Construction Start Date:** October 29, 2012
- **Substantial Completion:** **47 Calendar Days**
 - Possibly by December 14, 2012
- **Final Completion:** **14 Calendar Days**
 - From acceptance of Substantial Completion
- **Start Submittals at Notice of Award**
- **Fall Semester Exams:** December 13 - 19, 2012
- **Spring Semester Start:** January 14, 2013



Construction Schedule





SAN MATEO COUNTY
COMMUNITY COLLEGE DISTRICT

FACILITIES PLANNING,
MAINTENANCE & OPERATIONS

“Facilities Excellence”

Kathleen Wong & Jim Fruit, Sally Swanson Architects, Inc.

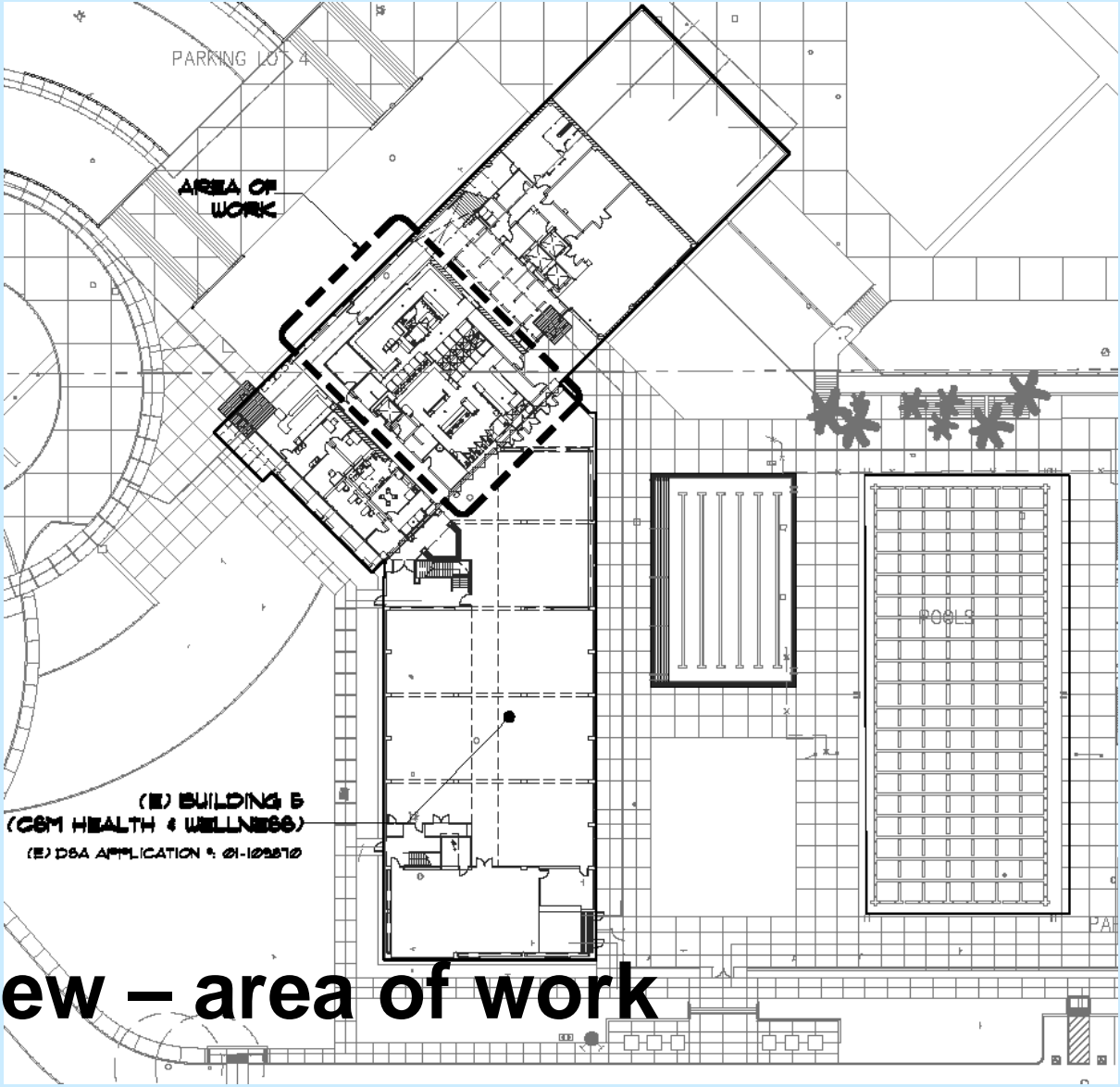
Project Overview

- Project Scope Introduction
- New B5 – SMAC, Cosmo, Dental, Nursing, offices
- Area of Work within B5
- Demolition
- Renovations – M E P, FA, Finishes etc.
- State Agencies Having Jurisdiction (AHJ's)
 - Division of State Architect (DSA)
- Bid documents/Alternates/ Addenda



Scope of Work





Overview – area of work



Scope of Work

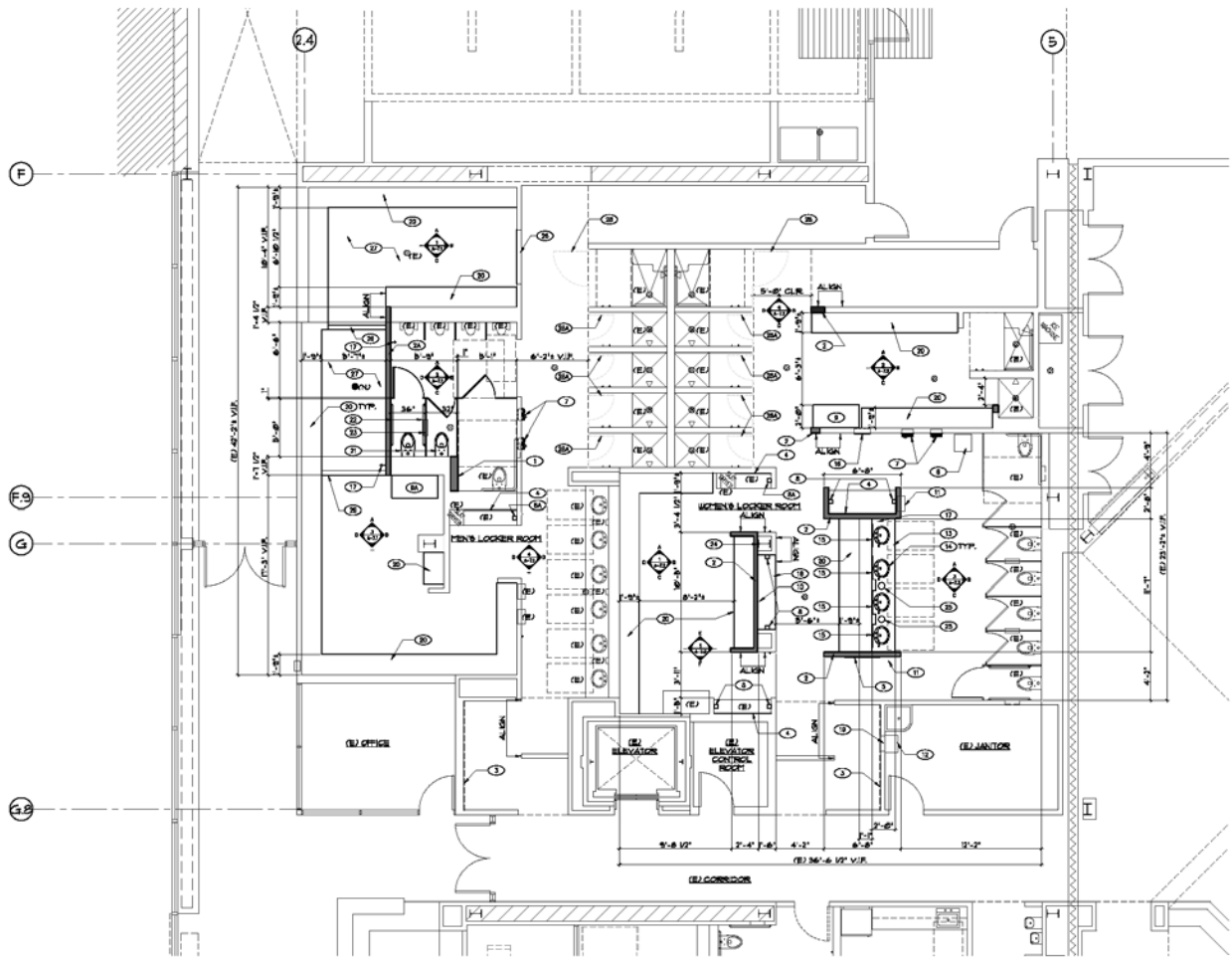




SAN MATEO COUNTY
COMMUNITY COLLEGE DISTRICT

FACILITIES PLANNING,
MAINTENANCE & OPERATIONS

“Facilities Excellence”



Project Overview

1 MEN AND WOMEN LOCKER ROOMS - FLOOR PLAN
C&T HEALTH & WELLNESS BUILDING 5TH FLOOR



TEXT LEGEND	
(E) - EXISTING TO REMAIN, LOCK	
SYMBOL LEGEND	
	(N) METAL STD., TYP. LOCK
	EXISTING FLOOR DRAIN
	(N) LOCKER, N.G.

- (N) ADA SHOWER DOOR, TYP. PROVIDE BLOCKING IN WALL FOR ATTACHMENT (BID ALTERNATE ITEM NO. U)
- (N) INCLUSE DOOR, TYP. PROVIDE BLOCKING IN WALL FOR ATTACHMENT (BID ALTERNATE ITEM NO. U)



Scope of Work





SAN MATEO COUNTY
COMMUNITY COLLEGE DISTRICT

FACILITIES PLANNING,
MAINTENANCE & OPERATIONS

“Facilities Excellence”

- *College of San Mateo is an Occupied Campus, Building 5 is occupied and very much active*
- ***College Educational Mission is Paramount***
- **Communication with Construction Manager**
 - Impact, email
 - Weekly Owner/Architect/Contractor Meeting
- **Advance Notice Required**
 - Utility Shutdowns/Access Interruptions
- **Protect existing utilities, surfaces, finishes**
 - Study As-Builts
 - Field Review with Chief Engineer



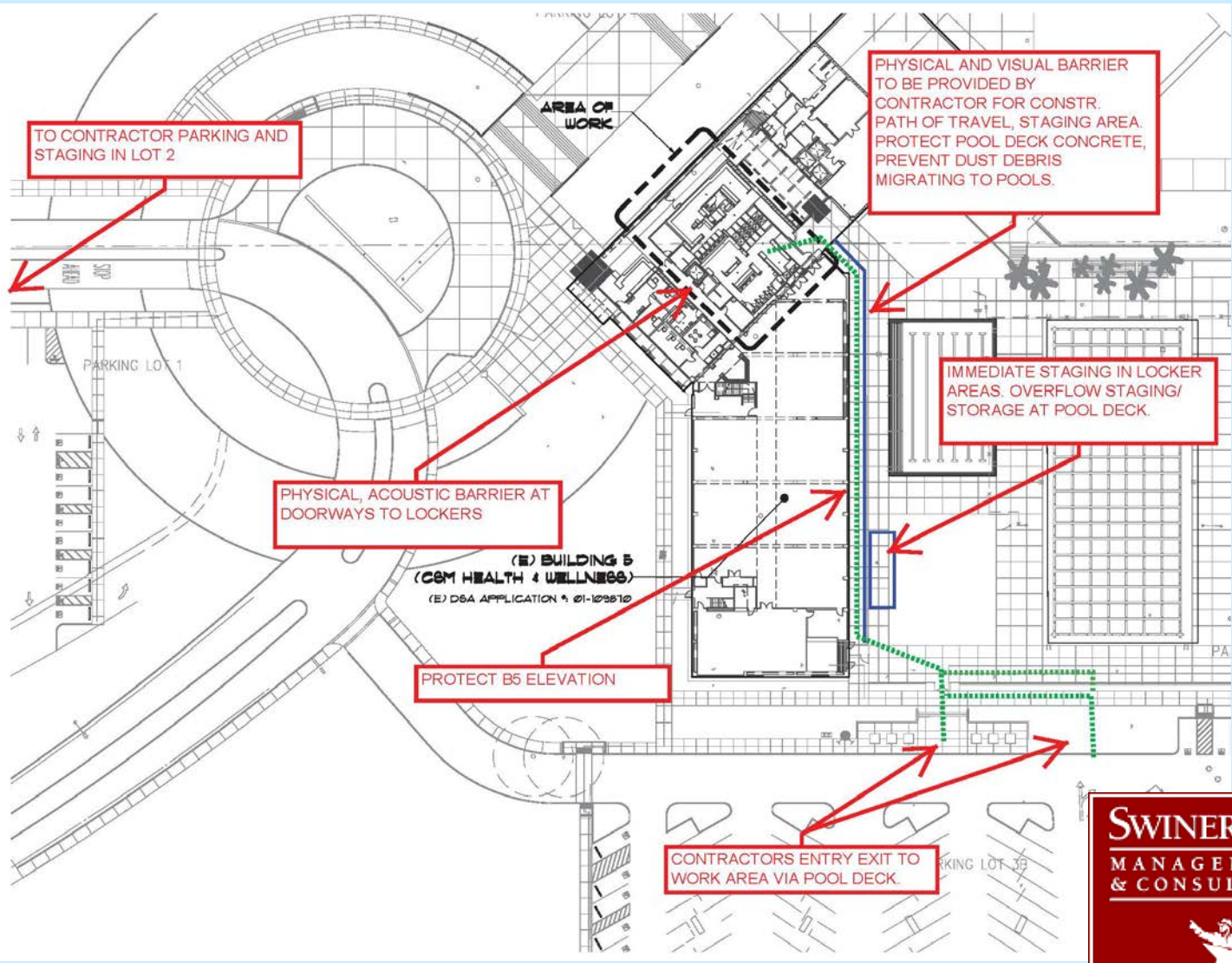
Occupied Campus Logistics



SAN MATEO COUNTY
COMMUNITY COLLEGE DISTRICT

FACILITIES PLANNING,
MAINTENANCE & OPERATIONS

“Facilities Excellence”



Site Logistics Plan





SAN MATEO COUNTY
COMMUNITY COLLEGE DISTRICT

FACILITIES PLANNING,
MAINTENANCE & OPERATIONS

“Facilities Excellence”

- **Construction logistics must accommodate the College’s schedule, events and priorities**
- **Pool Deck Staging and Laydown Areas –**
 - Immediate staging in locker room areas, overflow to pool deck
 - Visual and physical barrier at construction pathway and staging
 - Protect concrete pool deck at all construction areas
 - Protect Building 5 elevation
 - Provide logistics plan submittal for District’s review
- **Locker doors to Building 5 hallway –**
 - Barrier, Acoustic isolation at locker rooms doorways
 - Minimize construction noise
 - Schedule early, around academic activities



Occupied Campus Logistics





SAN MATEO COUNTY
COMMUNITY COLLEGE DISTRICT

FACILITIES PLANNING,
MAINTENANCE & OPERATIONS

“Facilities Excellence”

- **Contractor Parking/Staging in Lot 2**
 - Fence, gates, signs
- **Safety**
 - Pools, Pool deck and all other areas of B5 and Aquatics are active
 - Physical/visual barrier for construction pathway
 - Physical/visual enclosure for staging area
 - No dust debris/transfer to pool deck or pools
 - Site Safety Signage
 - GC Point of Contact On Site at all times



Occupied Campus Logistics





SAN MATEO COUNTY
COMMUNITY COLLEGE DISTRICT

FACILITIES PLANNING,
MAINTENANCE & OPERATIONS

“Facilities Excellence”

Project Labor Stabilization Agreement

Contract Section 01 35 27 – Project Labor Agreement

- Awarded Contractor and all their Subcontractors must adhere to the PLA
- Signed PLA Letter Of Assent required with Contract
- Copies of the Agreement are available at the District website

http://www.smccd.edu/accounts/smccd/departments/facilities/PLASMCCCD_01.pdf



PLA



SAN MATEO COUNTY
COMMUNITY COLLEGE DISTRICT

FACILITIES PLANNING,
MAINTENANCE & OPERATIONS

“Facilities Excellence”

Questions & Answers

Thank You

for Your Interest in this project!

<http://www.smccd.edu/accounts/smccd/departments/facilities/>

You are Encouraged to Walk the Site



Questions & Answers

