

**CAÑADA COLLEGE
GATEWAYS, CIRCULATION AND PARKING PROJECT
MANDATORY PRE-PROPOSAL CONFERENCE**

MARCH 11, 2008





- **LINDA DA SILVA & RICK BENNETT, CO-EXECUTIVE DIRECTORS, CONSTRUCTION PLANNING DEPARTMENT**
- **ALEX ACENAS, PROJECT MANAGER, CONSTRUCTION PLANNING DEPARTMENT**
- **JENNIFER JAMES, PROJECT COORDINATOR, CONSTRUCTION PLANNING DEPARTMENT**
- **JOSÉ NUÑEZ, VICE CHANCELLOR OF FACILITIES**
- **DANNY GLASS, FACILITIES OPERATIONS MANAGER, CAÑADA COLLEGE**
- **JOZSEF VERES, CHIEF ENGINEER, CAÑADA COLLEGE**
- **MURIEL WILSON , GATES AND ASSOCIATES (LANDSCAPE ARCHITECT)**
- **DAVID ANGERS, SANDIS (CIVIL ENGINEER)**
- **LINDA RIZZOLI, SWINERTON MANAGEMENT & CONSULTING (CONSTRUCTION MANAGER)**
- **SHARON IBURG, KEENAN & ASSOCIATES**
- **KURT DODGE, CIS INC., INSPECTOR OF RECORD**



MEET THE TEAM



- **WELCOME AND INTRODUCTIONS**
- **PRE-PROPOSAL CONFERENCE ADMINISTRATION**
- **PROPOSAL & CONTRACT AWARD SCHEDULE**
- **PROJECT OVERVIEW**
- **OCCUPIED CAMPUS COORDINATION REQUIREMENTS**
- **OCIP**
- **BID & CONTRACT DOCUMENTS**
- **QUESTION & ANSWER**



AGENDA



- SB6 1 4 DESIGN-BUILD LEGISLATION
 - “DESIGN-ASSIST” FLAVOR OF DESIGN-BUILD FOR THIS PROJECT
- BEST VALUE PROPOSAL VERSUS LOWEST BID
- ENCOURAGE CREATIVE APPROACHES TO THE COMPLICATED SCHEDULING AND PHASING ASPECTS OF THE PROJECT
- IDENTIFY VALUE ENGINEERING OPPORTUNITIES TO MAXIMIZE SCOPE WITHIN AVAILABLE FUNDS



DESIGN-BUILD DELIVERY



1. BIG-D PACIFIC BUILDERS
2. ROBERT A. BOTHMAN, INC.
3. JOHN PLANE CONSTRUCTION, INC.
4. PARK WEST LANDSCAPE, INC.
5. SCHEMBRI CONSTRUCTION Co., INC.
6. VALLEYCREST LANDSCAPE DEVELOPMENT, INC.



PRE-QUALIFIED DESIGN-BUILD ENTITIES



| <u>FACTOR</u> | <u>MAXIMUM POINTS</u> |
|-------------------------------------|-----------------------|
| 1. PRICE | 40 |
| 2. TECHNICAL EXPERTISE | 10 |
| 3. LIFE CYCLE COSTS OVER 25 YEARS | 5 |
| 4. SKILLED LABOR FORCE AVAILABILITY | 10 |
| 5. ACCEPTABLE SAFETY RECORD | 10 |
| 6. PROJECT MANAGEMENT PLAN | <u>25</u> |
| TOTAL (MAXIMUM) | 100 POINTS |

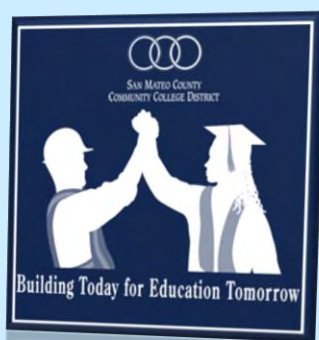
PROPOSAL EVALUATION FACTORS



- **MANDATORY CONFERENCE**
 - MARCH 11., 2008 @ 2:00 P.M.
- **PLEASE SIGN IN**
- **PRE-PROPOSAL CONFERENCE ATTENDANCE RECEIPT**

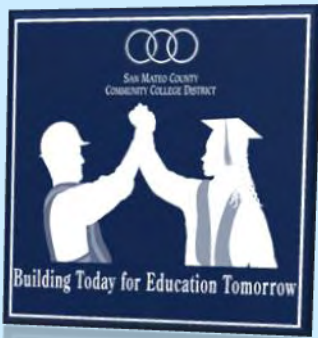


PRE-PROPOSAL CONFERENCE ADMINISTRATION



- PLANS & SPECS AVAILABLE: **MARCH 11, 2008**
- MANDATORY PRE-PROPOSAL CONFERENCE: **TUESDAY, MARCH 11, 2008 @ 2:00PM**
- CONFIDENTIAL MEETINGS: **WEEK OF MARCH 17 AND 24, 2008**
- LAST DAY FOR WRITTEN RFI'S: **FRIDAY, MARCH 28, 2008**
- LAST DAY THAT ADDENDA WILL BE ISSUED: **THURSDAY, APRIL 3, 2008**
- PROPOSALS DUE @ CSM BUILDING 6: **APRIL 8, 2008 @ 2:00 P.M.**
- TENTATIVE INTERVIEWS: **WEEK OF APRIL 14, 2008**
- SMCCCD BOARD OF TRUSTEES MEETING (ANTICIPATED CONTRACT APPROVAL): **WEDNESDAY, APRIL 30, 2008**
- ANTICIPATED NOTICE OF AWARD: **MAY 1, 2008**
- CONTRACT DOCUMENTS DUE FROM AWARDED CONTRACTOR: **NO LATER THAN MAY 12, 2008**
- NOTICE TO PROCEED: **AS EARLY AS MAY 13, 2008**

BID & CONTRACT AWARD SCHEDULE MAJOR MILESTONES



FARM HILL BLVD.

I-280

**CAÑADA COLLEGE
SAN MATEO COUNTY
COMMUNITY COLLEGE
DISTRICT
4200 FARM HILL
BOULEVARD
REDWOOD CITY, CA
94061**



CAÑADA RD.

CAÑADA COLLEGE OVERVIEW



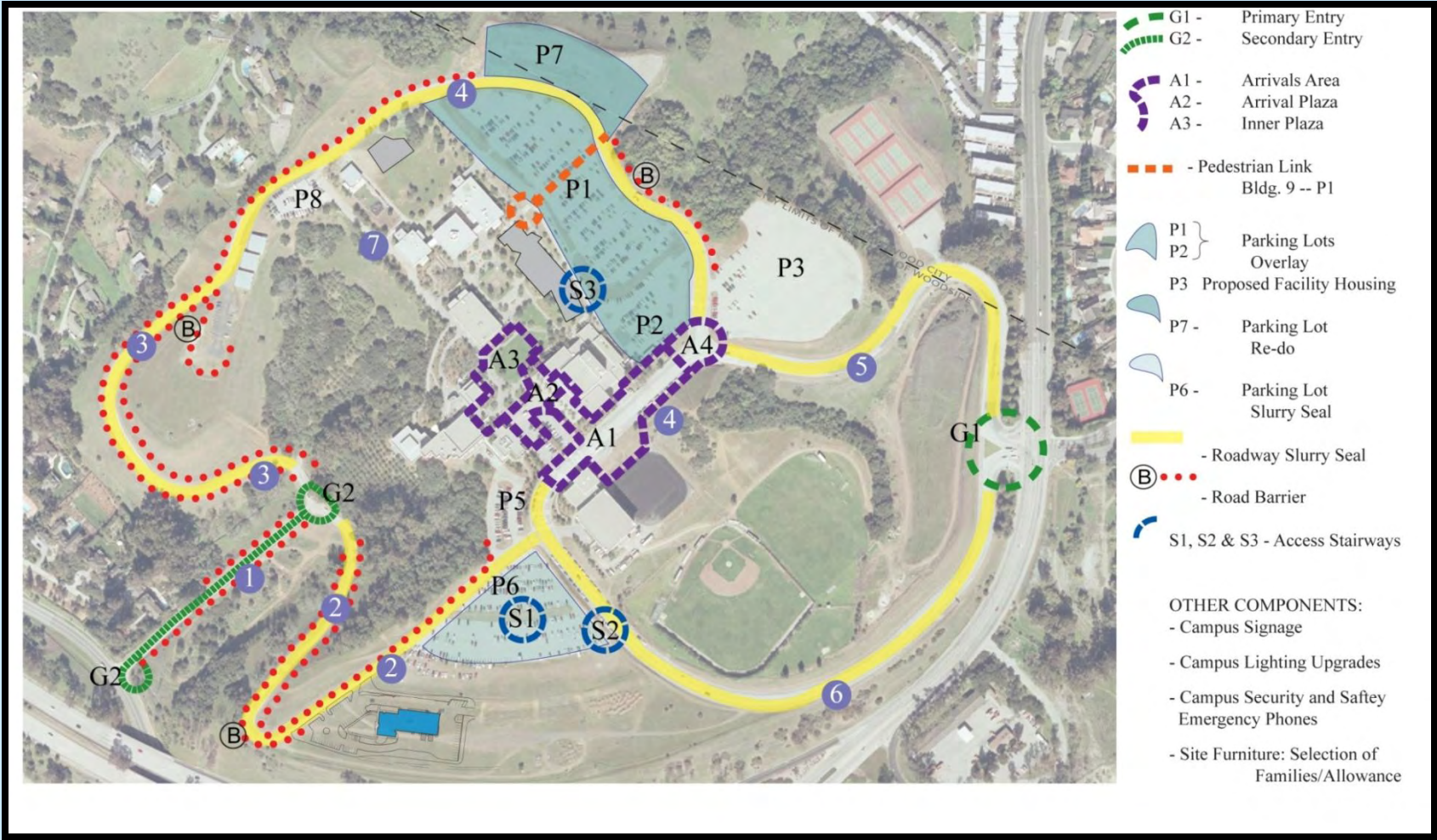
COMPLETING THE RENAISSANCE

GRACIOUSNESS, ACCESSIBILITY & SAFETY

- NEW LANDMARK ENTRIES
- IMPROVED VEHICULAR AND PEDESTRIAN INTERFACES
- IMPROVED ACCESSIBLE PATHS OF TRAVEL
- NEW WAYFINDING SIGNAGE
- ENHANCED SAFETY AND SECURITY
 - UPGRADED LIGHTING
 - SECURITY SURVEILLANCE CAMERAS
- SAFE AND WELCOMING PEDESTRIAN CROSSINGS
- IMPROVED ARRIVAL ZONE
- NEW SPACES TO SUPPORT CAMPUS ACTIVITIES



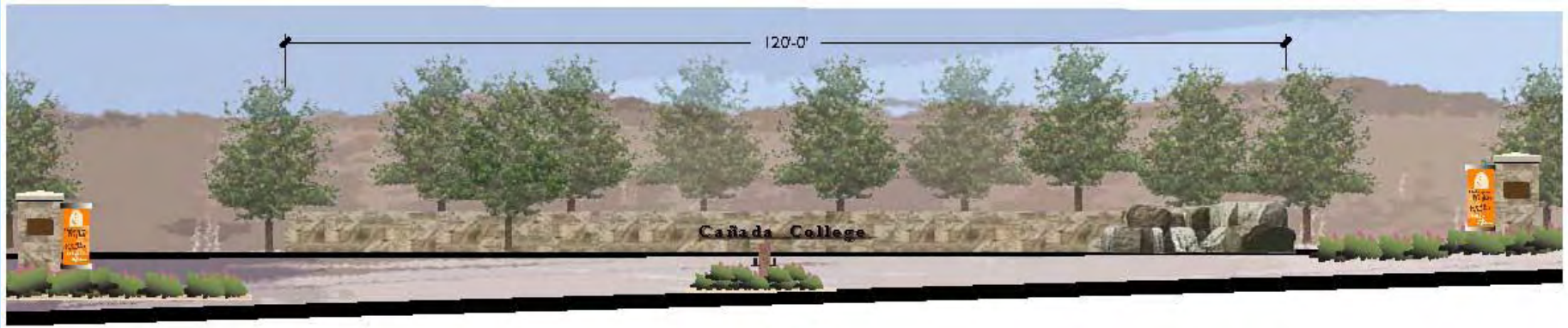
ZONES OF CONSTRUCTION



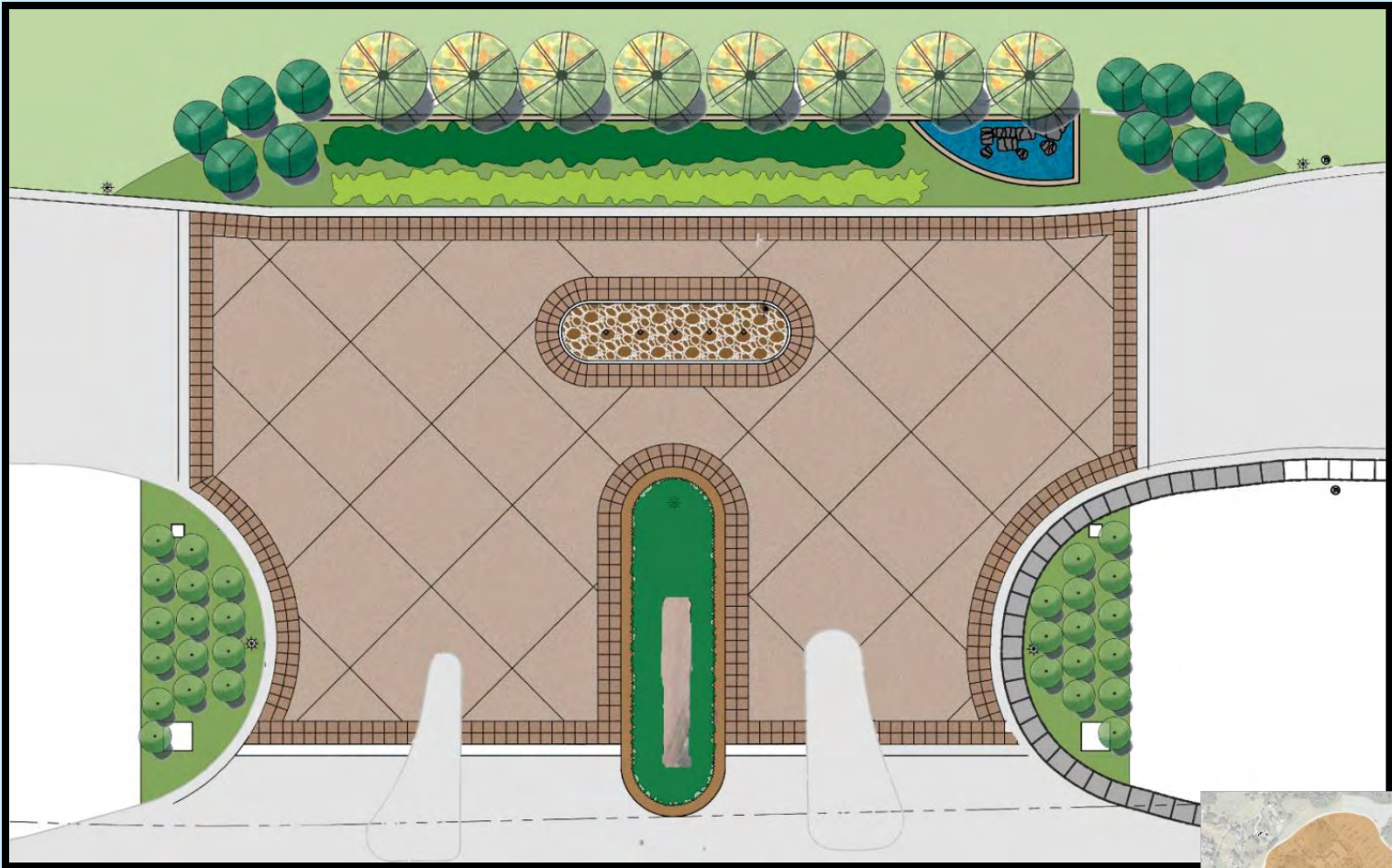
EXISTING PRIMARY GATEWAY @ FARM HILL BLVD



FUTURE PRIMARY GATEWAY @ FARM HILL BLVD



FUTURE PRIMARY GATEWAY @ FARM HILL BLVD



EXISTING SECONDARY GATEWAY AT CAÑADA ROAD



FUTURE SECONDARY GATEWAY AT CAÑADA ROAD



EXISTING SECONDARY GATEWAY CAÑADA ROAD

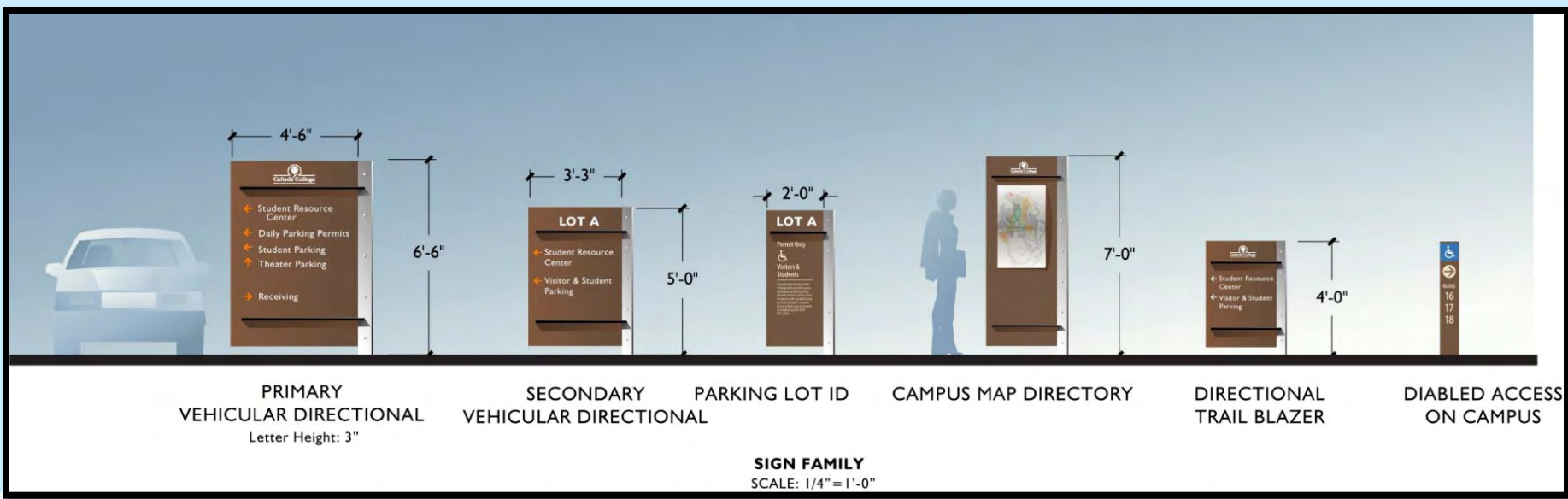


FUTURE SECONDARY GATEWAY AT CAÑADA RD.

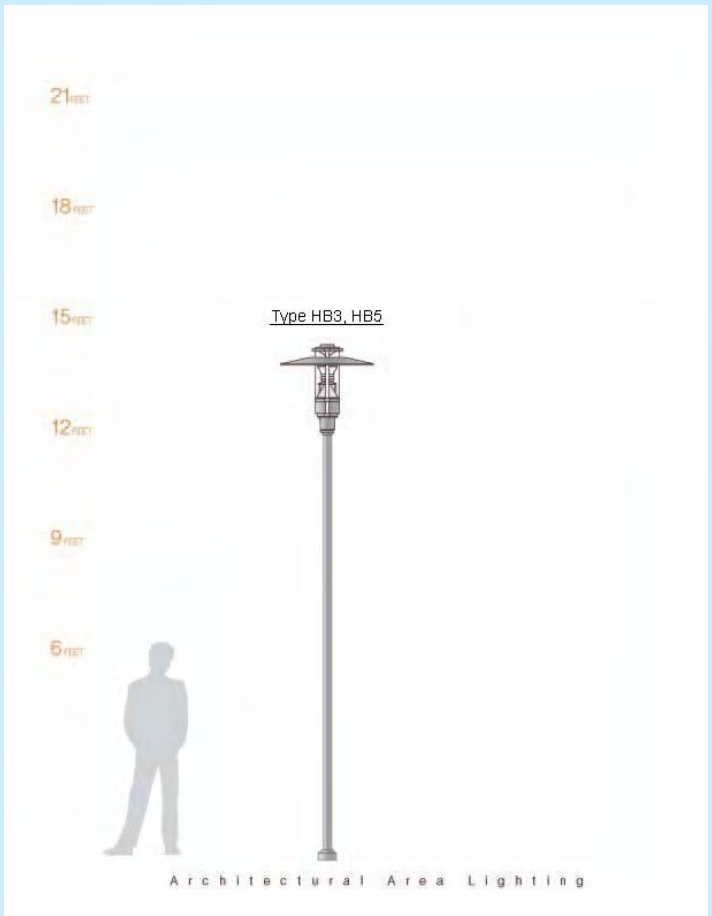
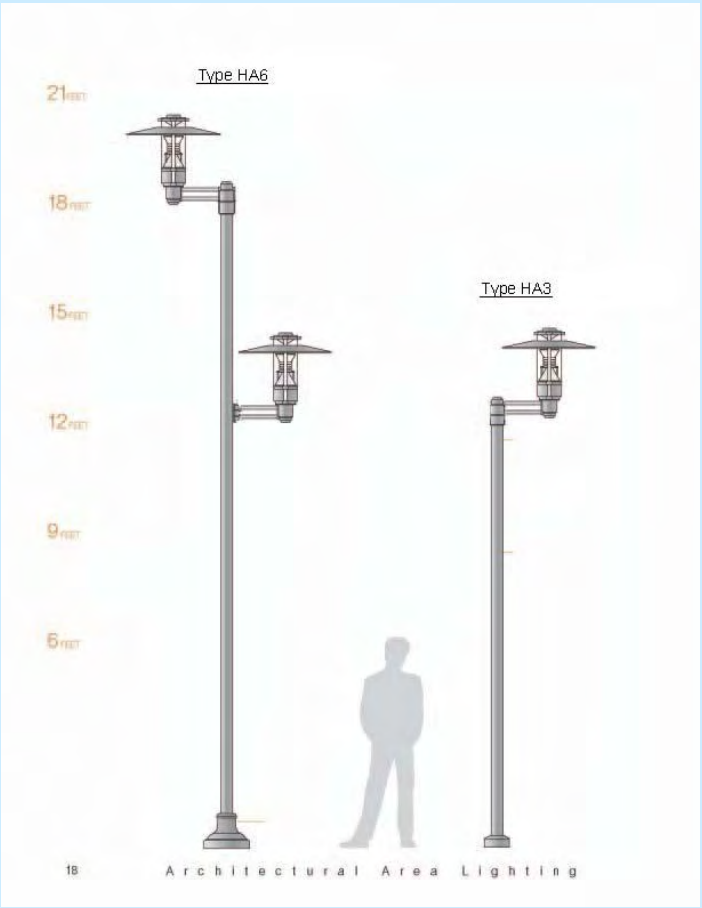


WAYFINDING SIGNAGE

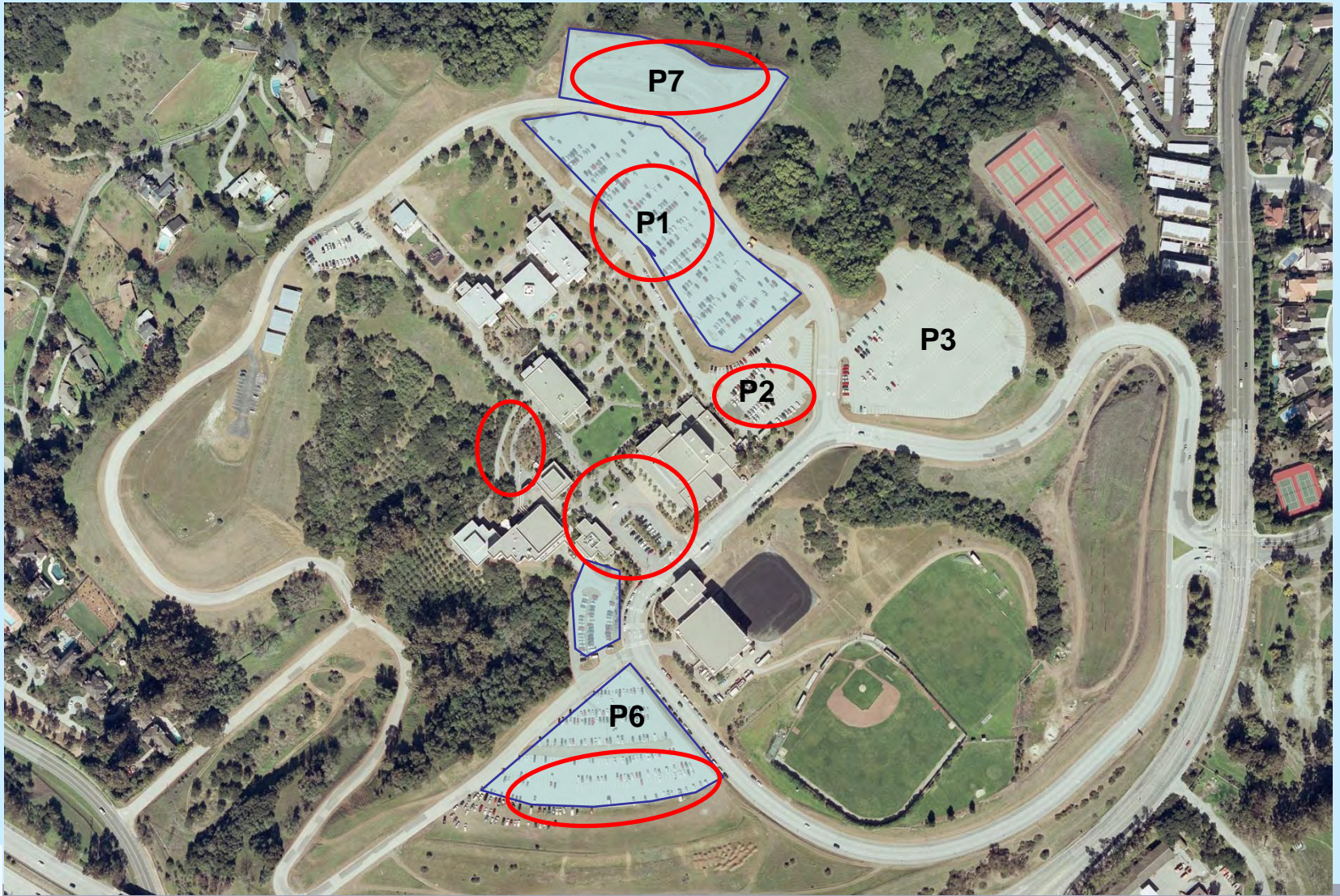
- Primary Vehicular Directional
- Secondary Vehicular Directional
- Parking Lot ID
- Campus Maps
- Pedestrian Directional
- Disabled Access Directional Bollard



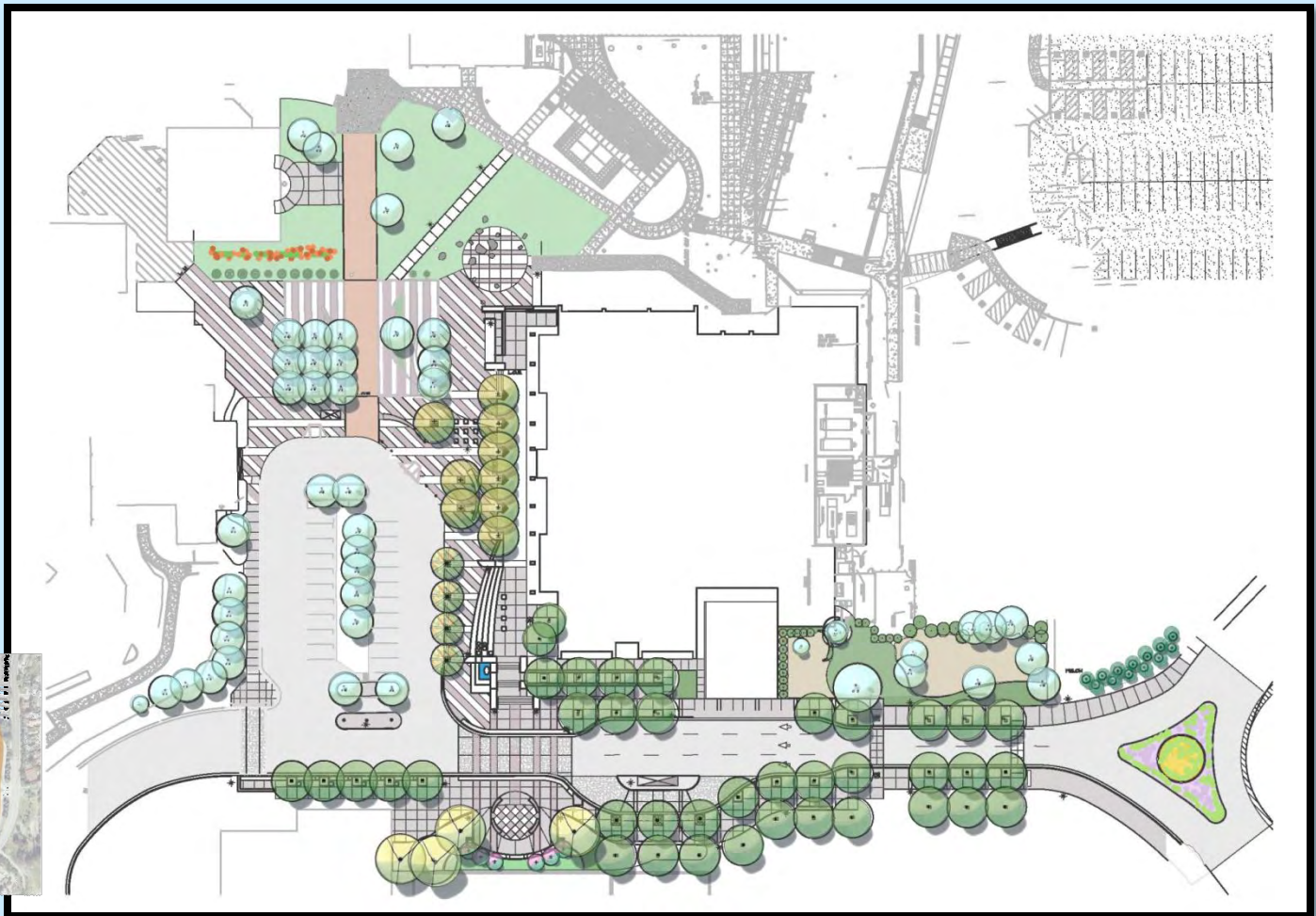
LIGHTING IMPROVEMENTS



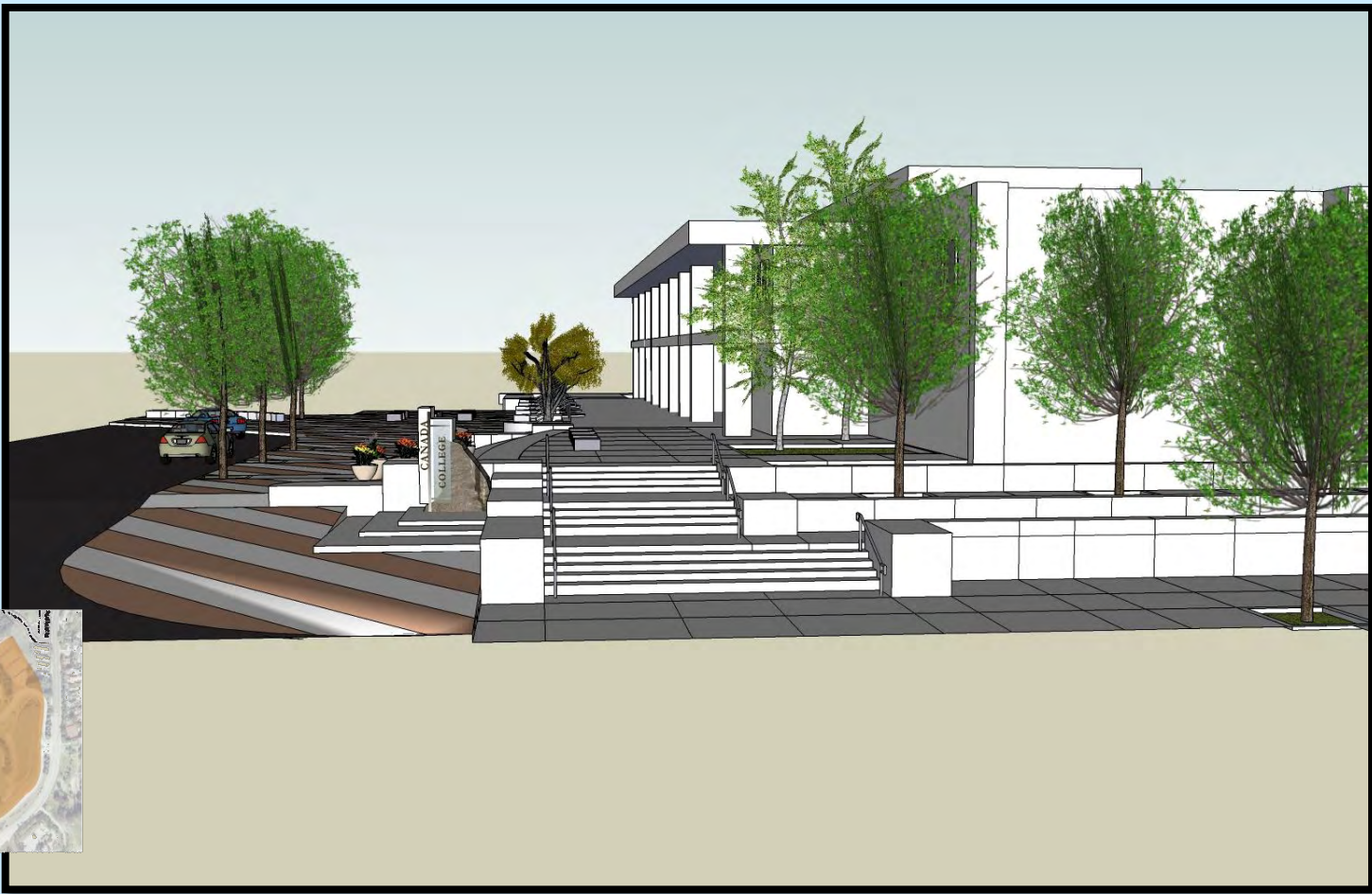
LIGHTING UPGRADE



REDESIGNED MAIN ARRIVAL ZONE



PERSPECTIVE VIEW FROM NEW BUS STOP





- ***CAÑADA COLLEGE IS AN OCCUPIED CAMPUS***
- ***COLLEGE EDUCATIONAL MISSION IS PARAMOUNT***
- ***CONSTRUCTION LOGISTICS MUST ACCOMMODATE THE COLLEGE'S SCHEDULE, EVENTS AND PRIORITIES***

- **ANTICIPATED CONTRACT PERIOD START — AS EARLY AS MAY 13, 2008**
- **ANTICIPATED SUBSTANTIAL COMPLETION — AUGUST 2009**
- **ACADEMIC CALENDAR**
 - FALL AND SPRING SEMESTERS ARE BUSIER THAN THE SUMMER
 - AT HEIGHT OF ATTENDANCE, ALL PARKING LOTS ARE HEAVILY USED
 - FALL AND SPRING: ~6,600 STUDENTS ENROLLED
 - SUMMER: ~2,500 STUDENTS ENROLLED
- **WORK DAYS AND HOURS**
 - M-F, 8 AM — 10 PM
 - MORE ACTIVITY BETWEEN 8 AM — 1 PM AND AFTER 6 PM
- **TRAFFIC**
 - TRAFFIC COUNT STUDY AVAILABLE
 - ~85% OF TRAFFIC COMES THRU PRIMARY GATEWAY
- **CAMPUS EVENTS**
 - OLIVE FESTIVAL (OCTOBER)
 - THEATER
 - GRADUATION (END OF MAY)

OCCUPIED CAMPUS LOGISTICS

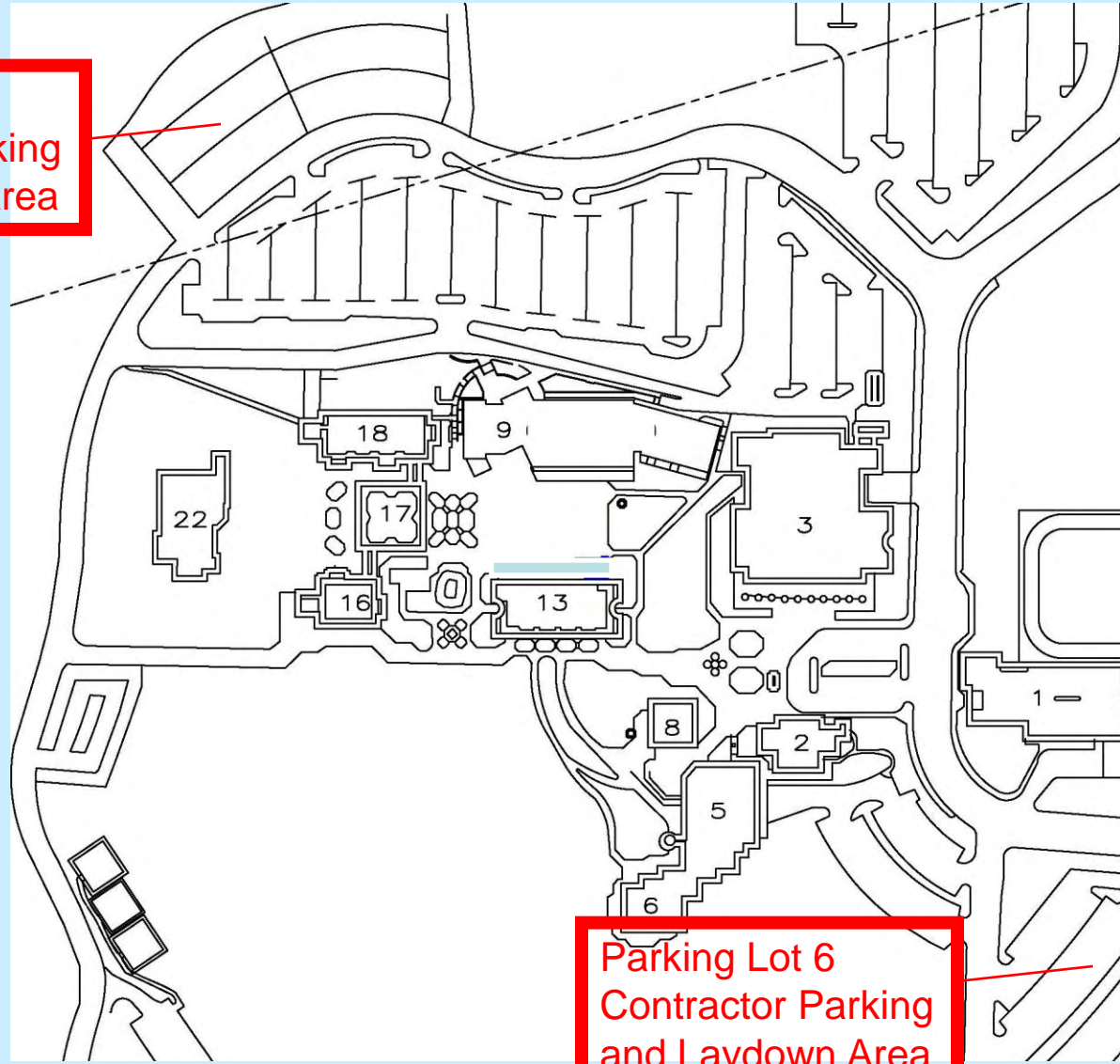


- **COMMUNICATION WITH CONSTRUCTION MANAGER**
- **WEEKLY OWNER/ENGINEER/CONTRACTOR MEETING**
- **SITE UTILIZATION PLAN – WEEKLY UPDATE**
- **CONCURRENT PROJECT COORDINATION**
 - **RENOVATION OF BUILDINGS 16 AND 18**
 - **CONSTRUCTION OF NEW FACILITIES AND MAINTENANCE CENTER**
 - **RENOVATION OF BUILDINGS 5, 6 & 8**
 - **CONSTRUCTION OF NEW FACULTY & STAFF HOUSING AT PARKING LOT 3**
- **PROTECT EXISTING UTILITIES**
 - **STUDY AS-BUILTS**
 - **FIELD REVIEW WITH CHIEF ENGINEER**
 - **POTHOLE CAREFULLY**
- **ADVANCE NOTICE – UTILITY SHUTDOWNS/ACCESS INTERRUPTIONS**
- **SIGNAGE – TRAFFIC CONTROL/PEDESTRIAN RE-DIRECT**
- **CONTRACTOR PARKING – **PARKING LOT 6 OR 7****
- **STAGING AND LAYDOWN AREAS - **PARKING LOT 6 OR 7****
- **SAFETY**
 - LOCAL WORK AREA ENCLOSURE FENCING**
 - SITE SAFETY SIGNAGE**
 - GC POINT OF CONTACT ON SITE – AT ALL TIMES**



OCCUPIED CAMPUS LOGISTICS

Parking Lot 7
Contractor Parking
and Laydown Area



Parking Lot 6
Contractor Parking
and Laydown Area



SITE UTILIZATION





KEENAN & ASSOCIATES:

- **DEFINITION OF OCIP**
- **BIDDING REQUIREMENTS: INSURANCE QUALIFICATION FORM AND EVIDENCE OF IIPP**
- **CONTRACTOR SAFETY AND HOW TO QUALIFY FOR OCIP**
 - **SERIOUS AND WILLFUL VIOLATIONS**
 - **IIPP**
 - **EMR**
- **OFF-SITE INSURANCE AND AUTO LIABILITY COVERAGE**
- **BASE BID SHALL NOT INCLUDE COSTS FOR INSURANCE COVERAGE PROVIDED UNDER OCIP**

OCIP

(OWNER CONTROLLED INSURANCE PROGRAM)





- Project documents are available at Elite reprographics for a fee: (415)957-1234 or
 - <http://www.eliterepro.com/>
- Also available at the District project website at:
 - [SMCCCD District - Home](#)
- Bay Area Plan rooms



BID DOCUMENTS



THANK YOU
FOR YOUR INTEREST
IN OUR
CAPITAL IMPROVEMENT
PROGRAM!

[HTTP://WWW.SMCCD.EDU/ACCOUNTS/SMCCD/DEPARTMENTS/FACILITIES/](http://www.smccd.edu/accounts/smccd/departments/facilities/)



QUESTIONS & ANSWERS