

CAÑADA COLLEGE GATEWAYS, CIRCULATION AND PARKING PROJECT

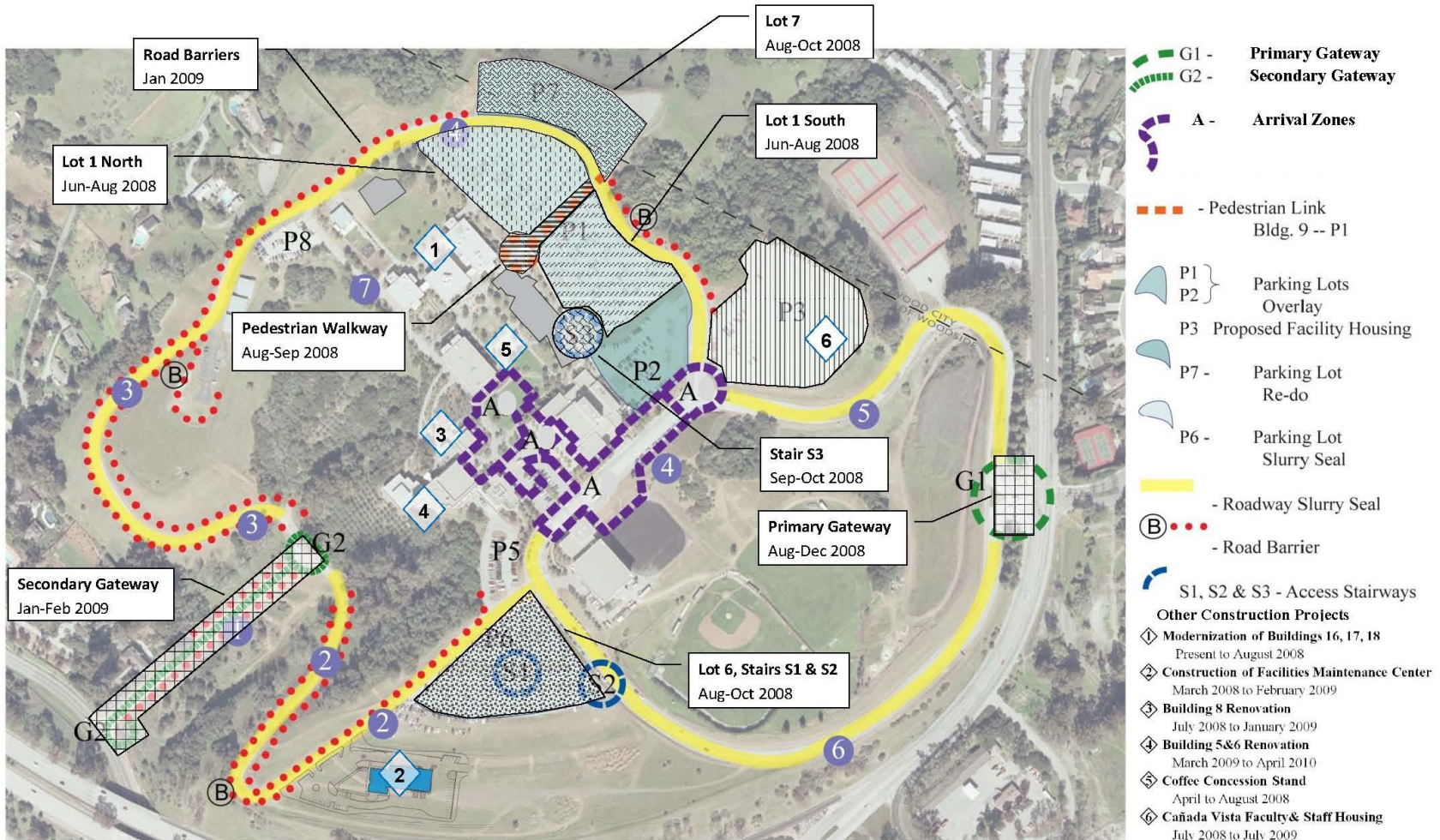


Completing the Renaissance

Graciousness, Accessibility & Safety

- New landmark entries
- Improved vehicular and pedestrian interfaces
- Improved accessible paths of travel
- New wayfinding signage
- Enhanced safety and security
 - upgraded lighting
 - security surveillance cameras
- Safe and welcoming pedestrian crossings
- Improved arrival zone
- New spaces to support campus activities

Zones of Construction

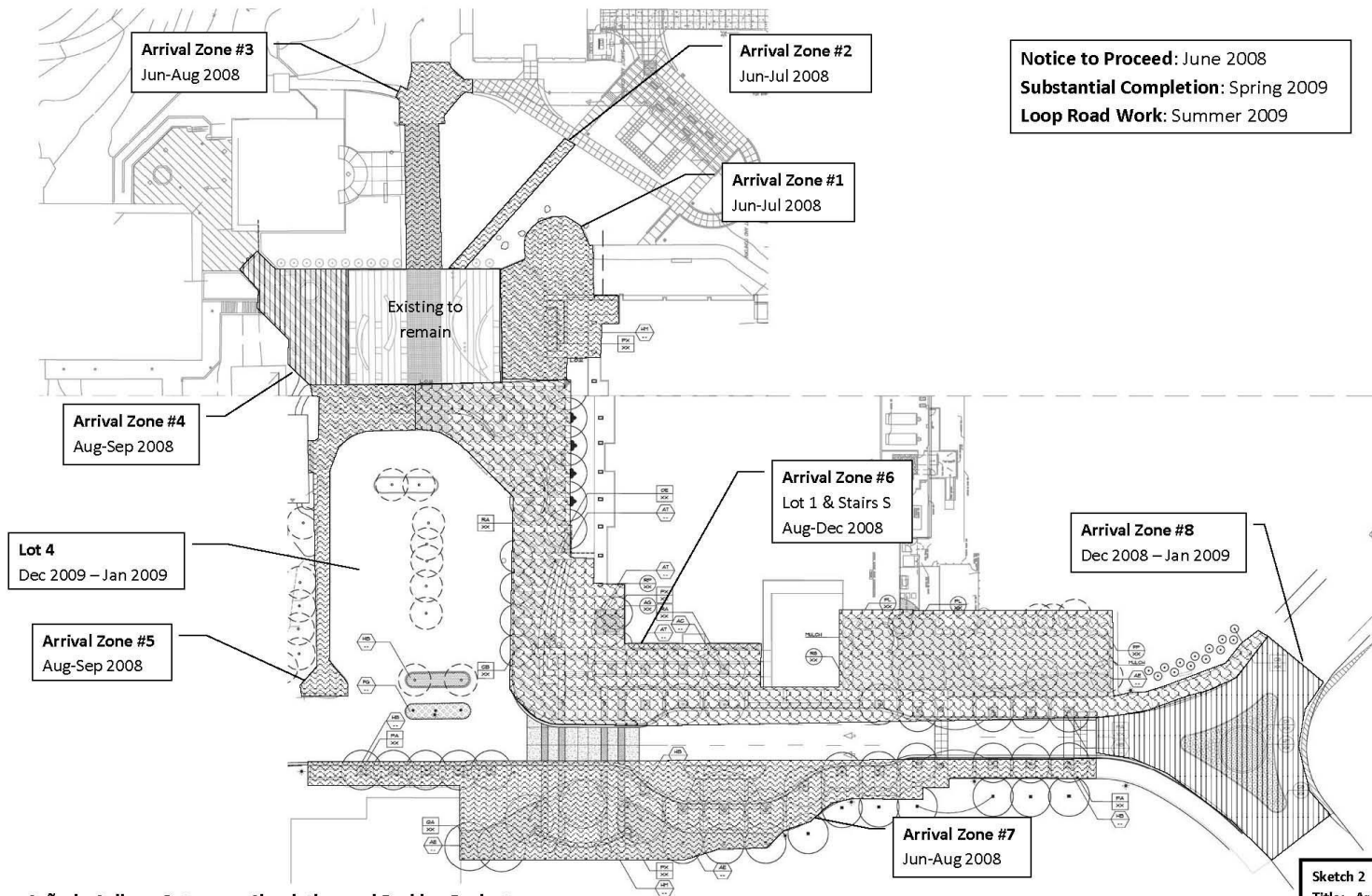


Cañada College Gateways Circulation and Parking Project

Prepared by: Construction Planning Department

Sketch 1
Title: Areas of Work
Date: May 29, 2008

Zones of Construction



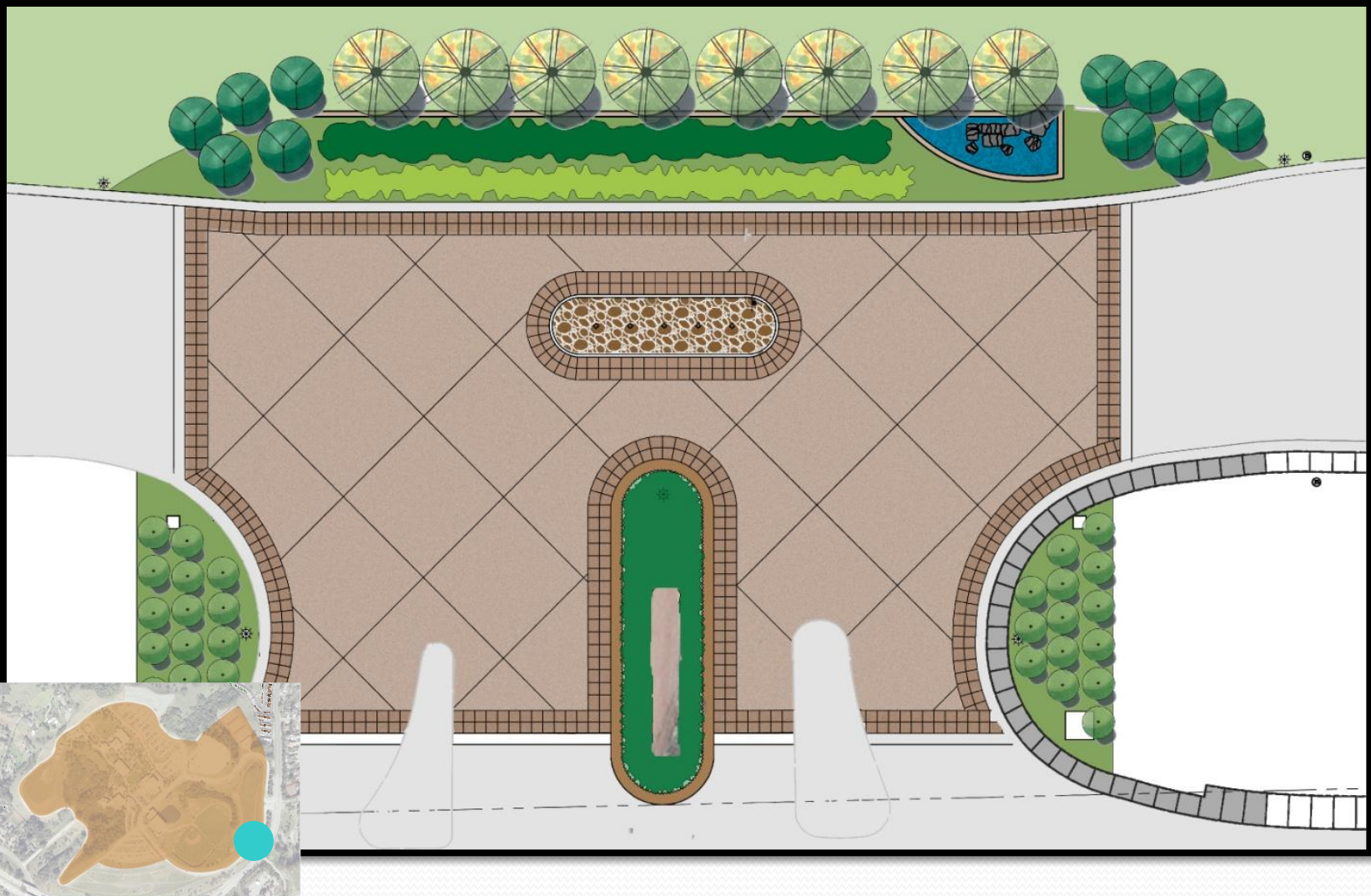
Notice to Proceed: June 2008
Substantial Completion: Spring 2009
Loop Road Work: Summer 2009

Cañada College Gateways Circulation and Parking Project

Prepared by: Construction Planning Department

Sketch 2
Title: Areas of Work
Date: May 29, 2008

Proposed Primary Gateway @ Farm Hill Blvd



Existing Primary Gateway @ Farm Hill Blvd



Proposed Primary Gateway @ Farm Hill Blvd



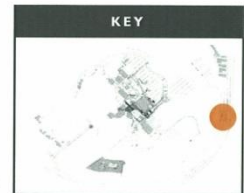
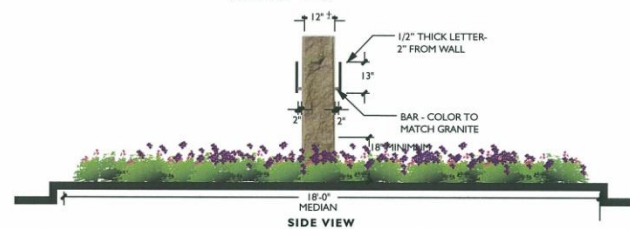
Proposed Island Median @ Farm Hill Blvd



1/2" THICK
INDIVIDUAL LETTERS - WELDED TO SHELF
SHELF IS MOUNTED TO WALL
LETTERS: CORTEN FINISH
"SCULPT NOUVEAU" - TRADITIONAL PATINA
SHELF: COLOR TO MATCH GRANITE

LW INDIVIDUAL LETTERS AT PRIMARY GATEWAY MEDIAN - 2 SETS

ELEVATION
SCALE: 3/8" = 1'-0"



- NOTES:**
1. SIGNAGE: SCOTTAG PRODUCT
2. METALIZED COATING: SCOTTAG COR-TEN VARIEGATED COLOR



CAÑADA COLLEGE REDWOOD CITY, CALIFORNIA

INDIVIDUAL LETTERS - PRIMARY GATEWAY MEDIAN

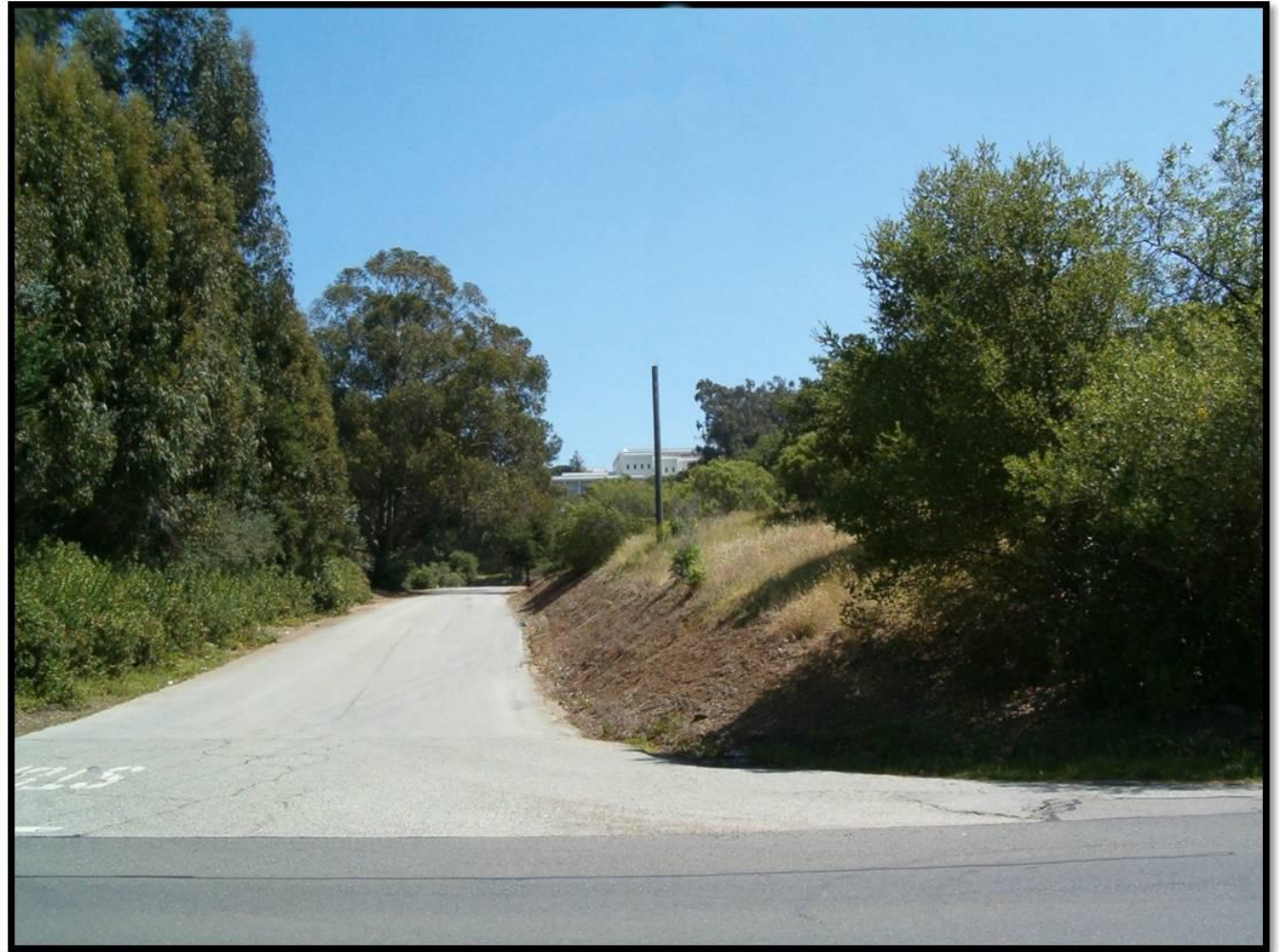
FEBRUARY 5, 2008



Proposed Monument @ Farm Hill Blvd



Existing Secondary Gateway at Cañada Road



Proposed Secondary Gateway at Cañada Road



Existing Secondary Gateway Cañada Road

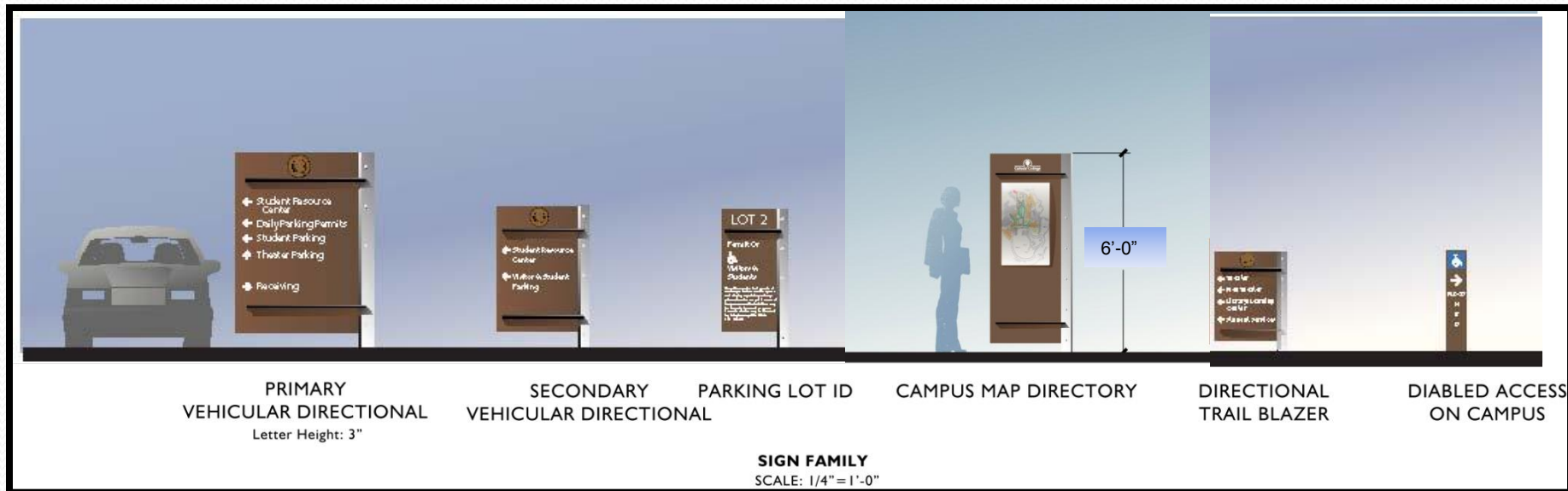


Proposed Secondary Gateway at Cañada Rd.

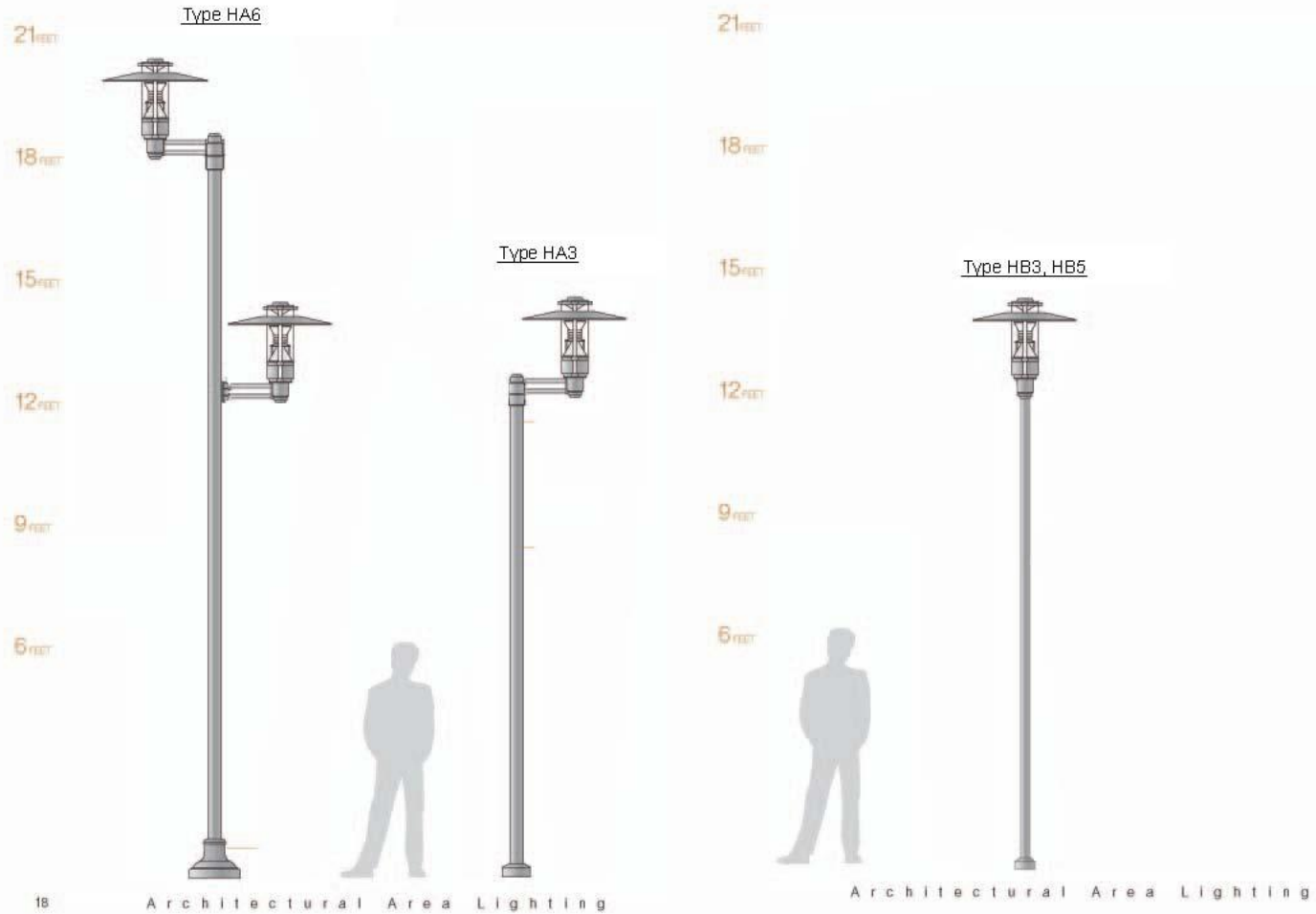


Wayfinding Signage

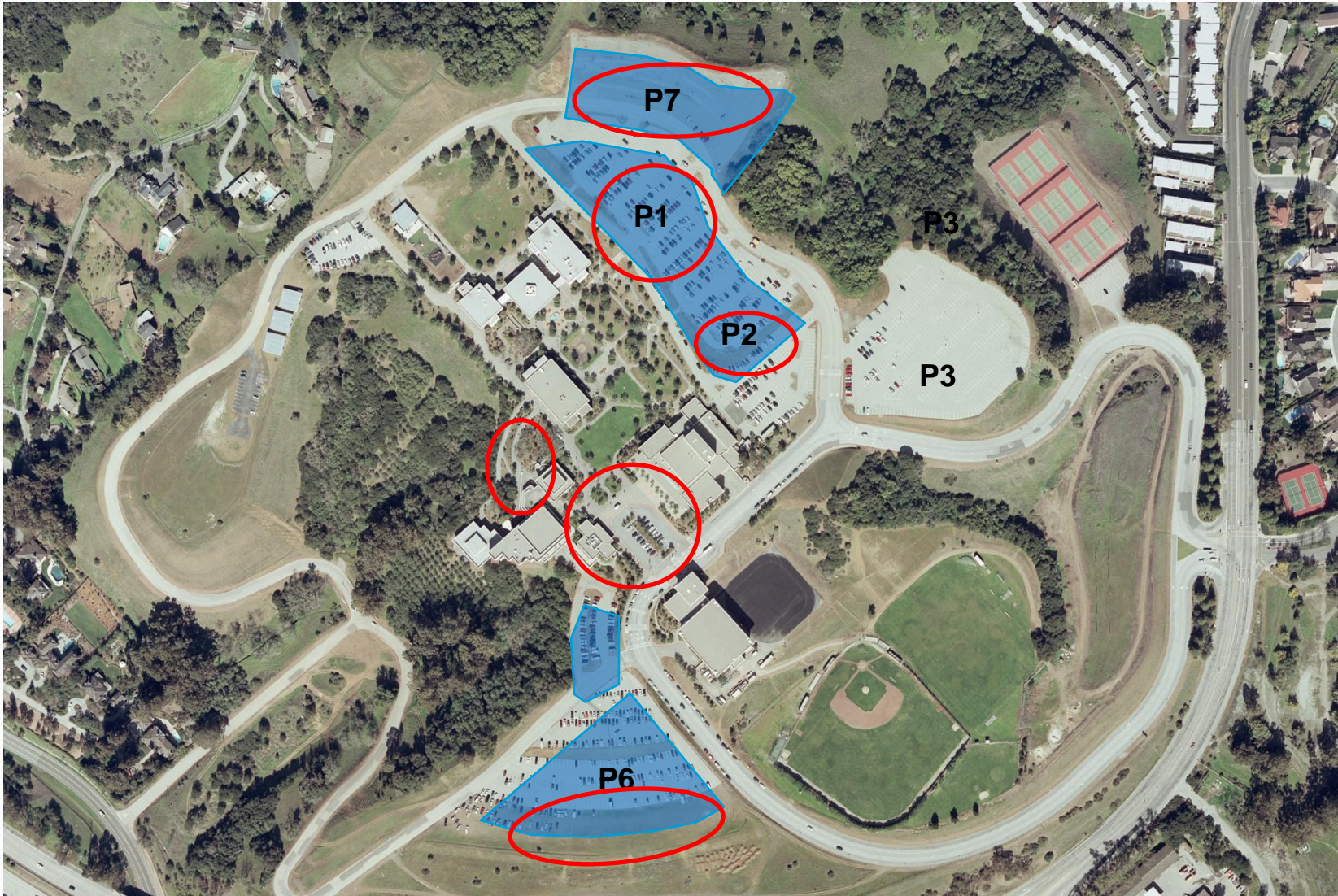
- Primary Vehicular Directional
- Secondary Vehicular Directional
- Parking Lot ID
- Campus Maps
- Pedestrian Directional
- Disabled Access Directional Bollard



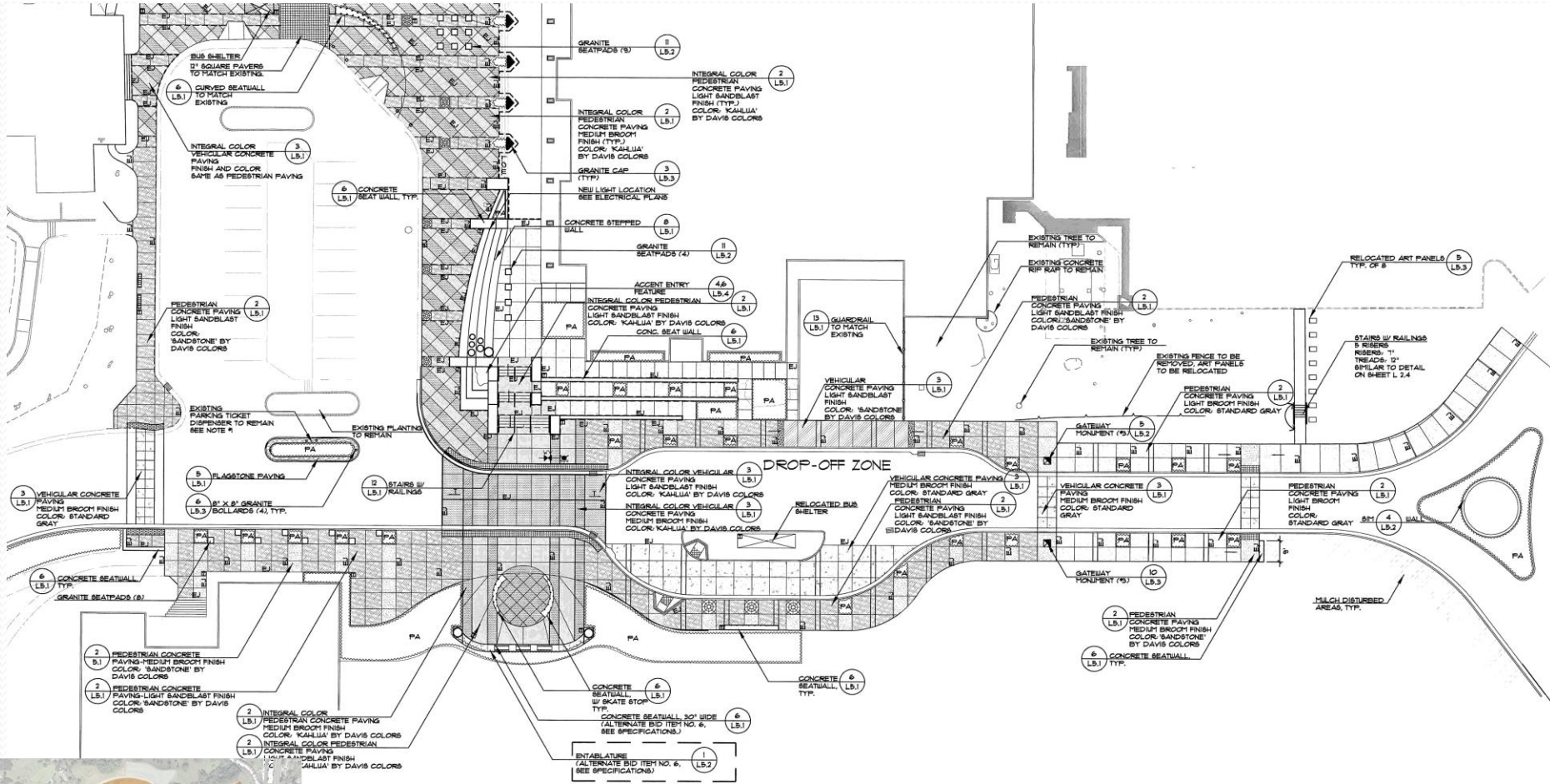
Lighting Improvements



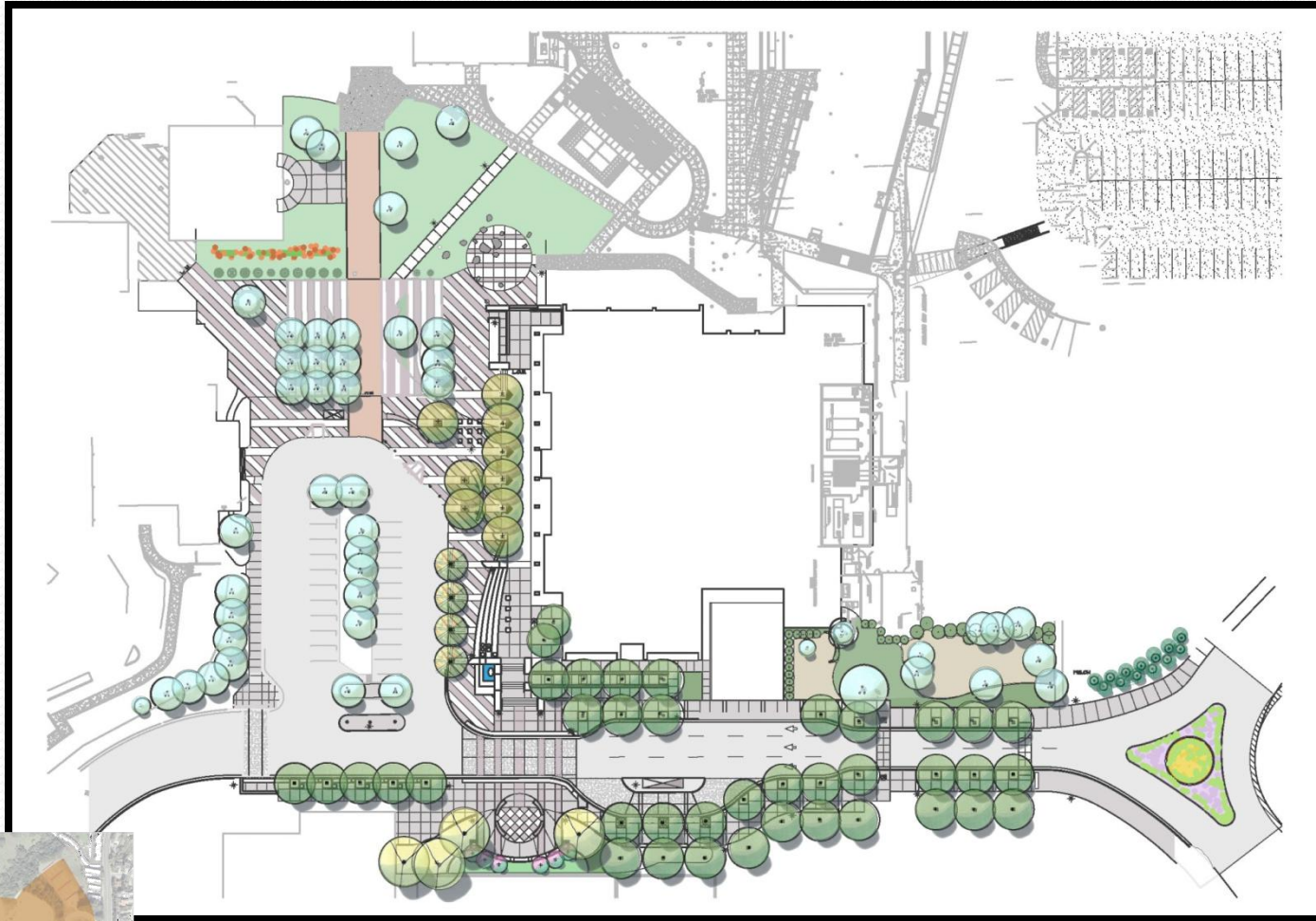
Lighting Upgrades



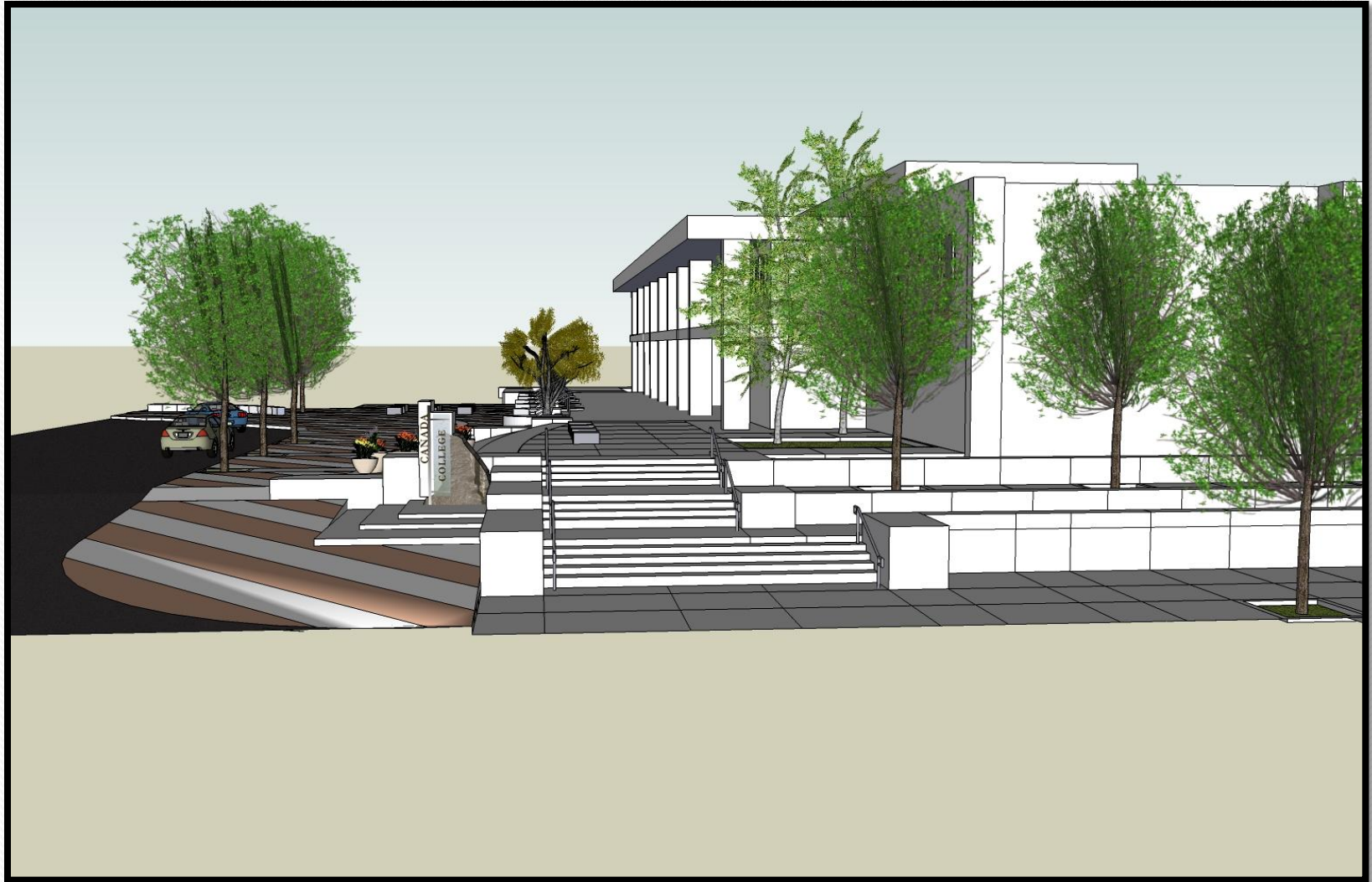
Redesigned Main Arrival Zone

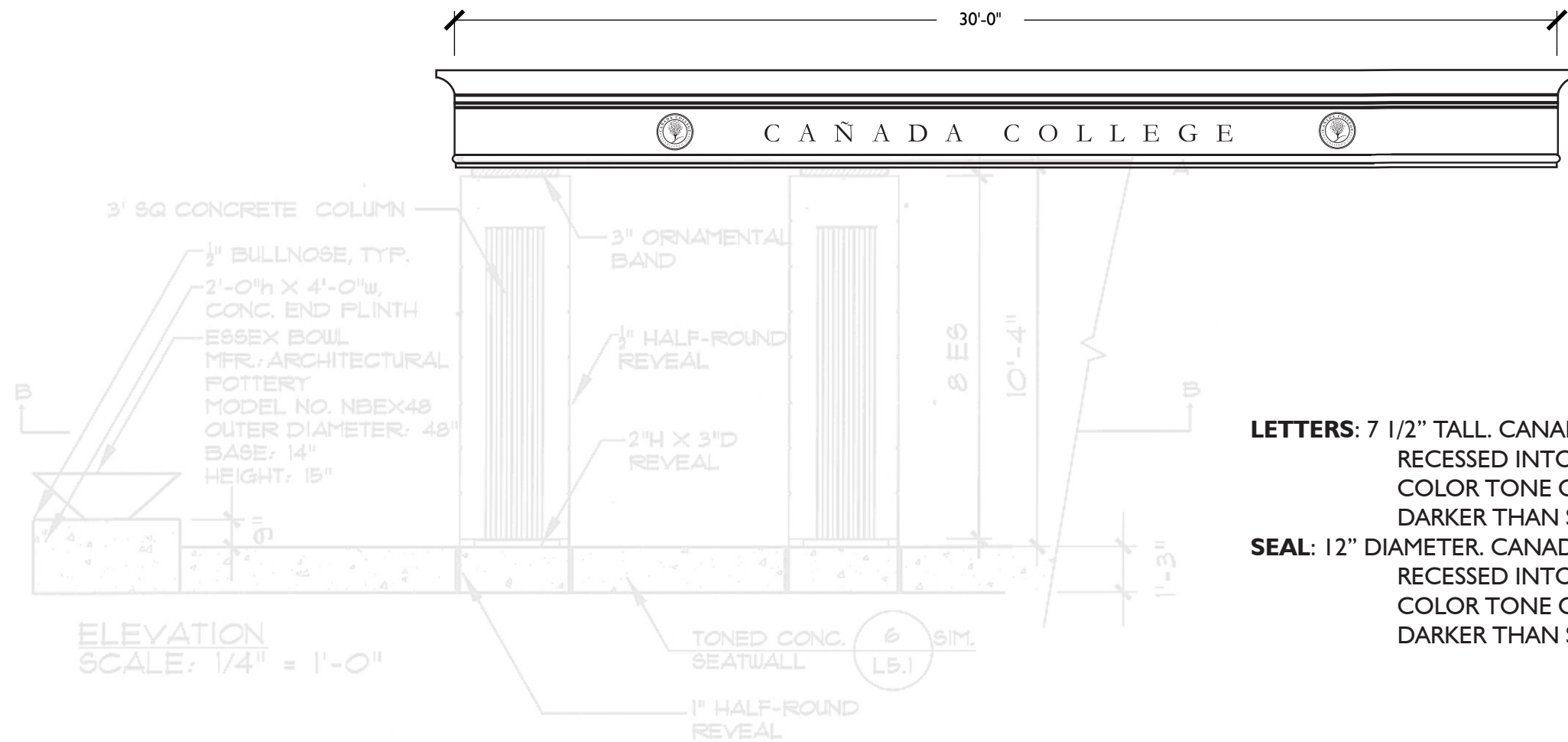


Redesigned Main Arrival Zone



Perspective View from new Bus Stop

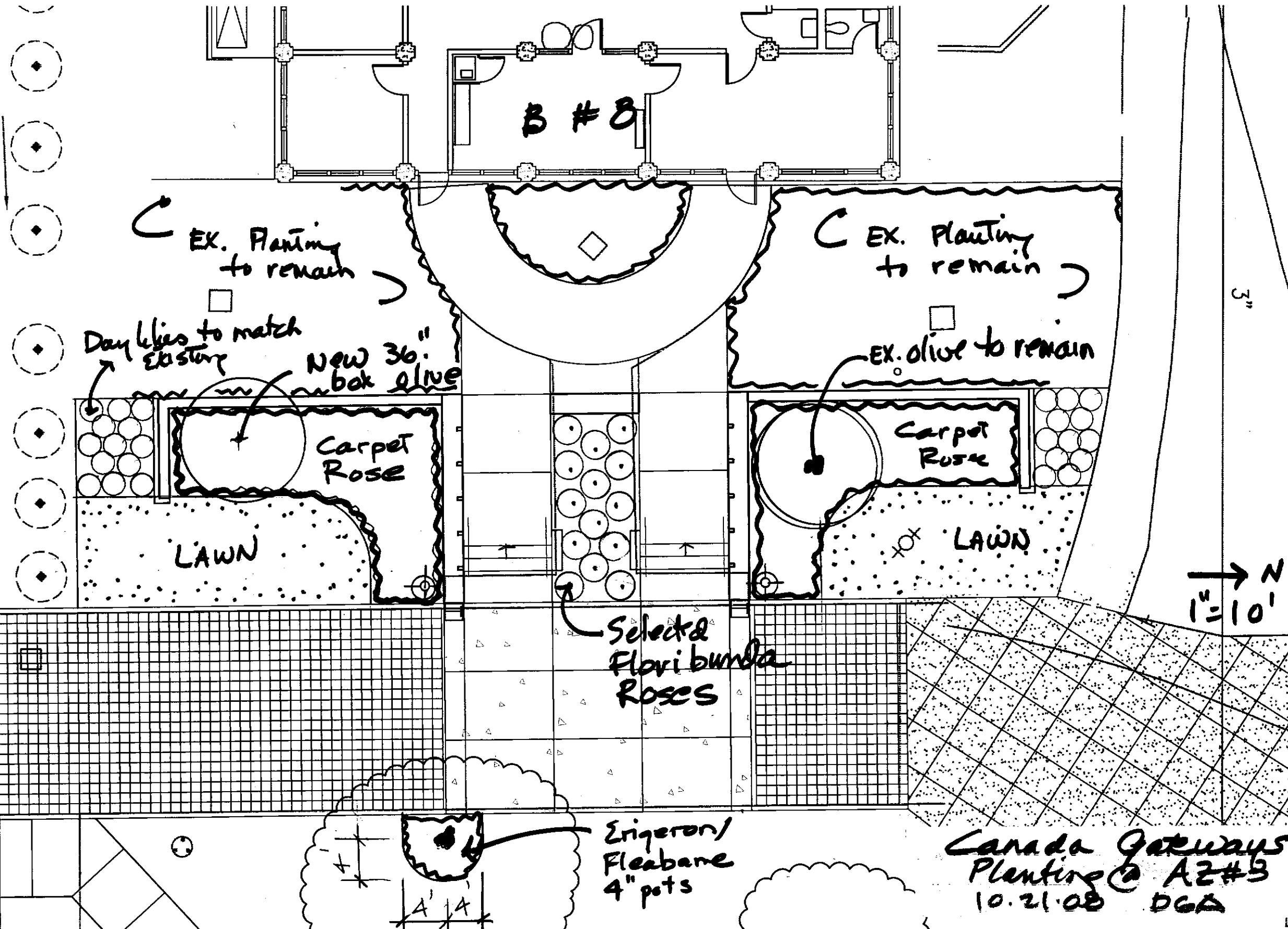




LETTERS: 7 1/2" TALL. CANADA LOGO (GARAMOND)
RECESSED INTO ENTABLATURE 1".
COLOR TONE OF RECESS TBD (SLIGHTLY
DARKER THAN SANDSTONE)

SEAL: 12" DIAMETER. CANADA SEAL.
RECESSED INTO ENTABLATURE 1/2".
COLOR TONE OF RECESS TBD (SLIGHTLY
DARKER THAN SANDSTONE)

1 ENTABLATURE-BID ALT. #6
SCALE: AS SHOWN



B # 8

EX. Planting to remain

EX. Planting to remain

Day lilies to match existing
New 36" box olive

EX. olive to remain

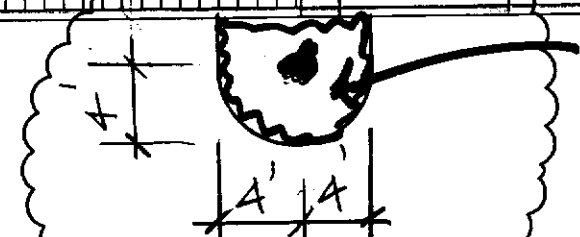
Carpet Rose

Carpet Rose

LAWN

LAWN

Select & Floribunda Roses

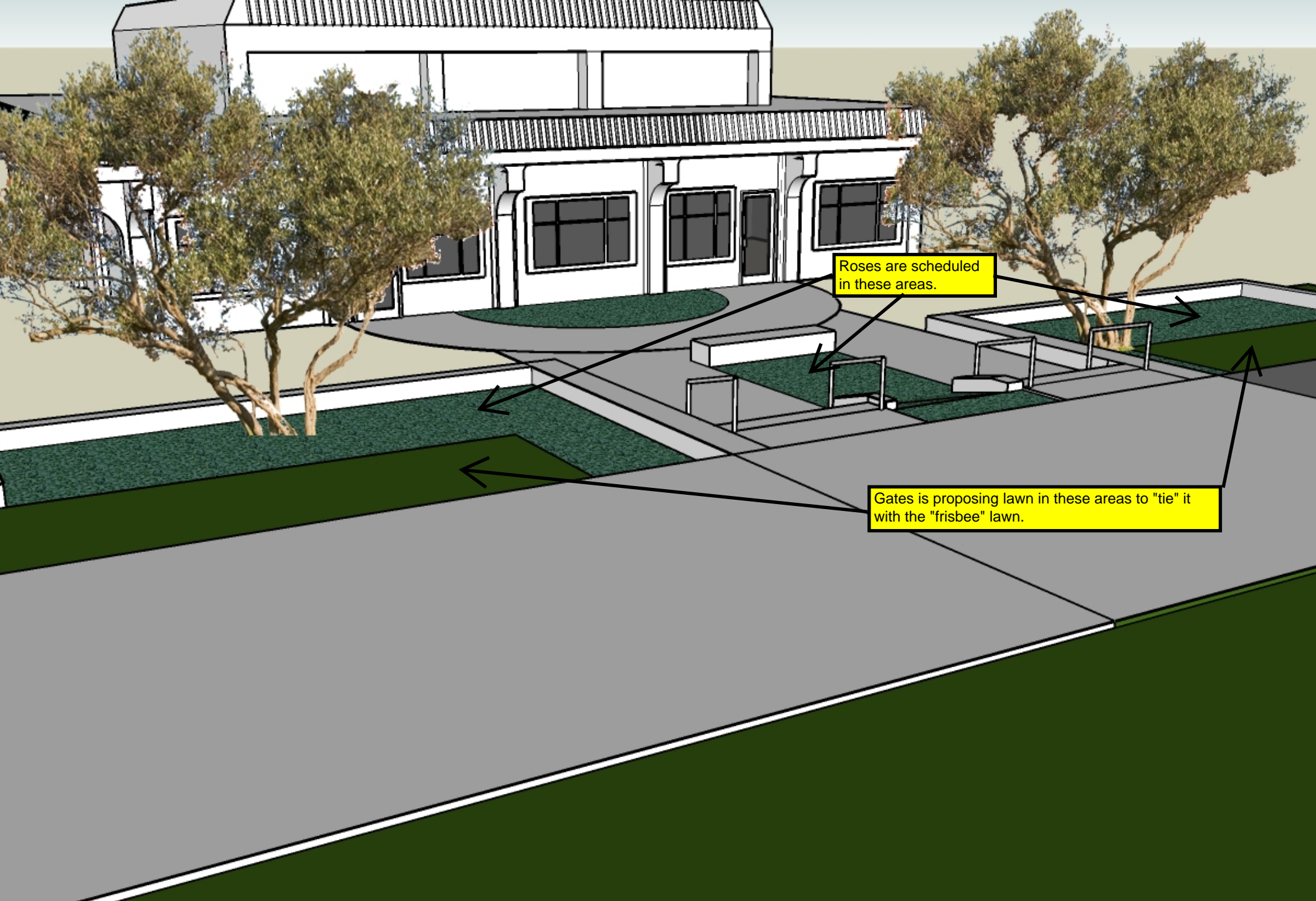


Erigeron/
Fleabane
4" pots

Canada Gateways
Planting @ AZ#3
10.21.08 DGA

1" = 10' N

3"



Roses are scheduled in these areas.

Gates is proposing lawn in these areas to "tie" it with the "frisbee" lawn.

