



SAN MATEO COUNTY  
**COMMUNITY**  
COLLEGE DISTRICT

# Bond Oversight Committee CIP Project Update

March 6, 2014

# District Demographics

(as of January '14)

	<b>Campus Acreage</b>	<b>Gross Square Feet</b>	<b>Assignable Square Footage</b>	<b>Buildings</b>	<b>Parking</b>	<b>Student Headcount</b> (Spring '14)	<b>Student FTES</b> (Spring '14)	<b>Full-Time Faculty &amp; Staff</b> (Spring '13)
<b>Cañada</b>	132	352,695	237,946	20	1,688	6,761	1,821	157
<b>CSM</b>	154	702,110	463,699	36	4,108	9,290	3,194	267
<b>Skyline</b>	110	541,764	371,092	30	2,495	10,135	3,430	235
<b>Chancellor's Office</b>	N/A	24,929	13,383	1	Incl. in CSM	0	0	205
<b>TOTAL</b>	396	1,621,498	1,086,120	87	8,291	26,186	8,444	864

"Facilities Excellence"

# District Wide Hydration Stations

---

- ▶ Project Budget

  - ▶ \$25,000

- ▶ Project Scope

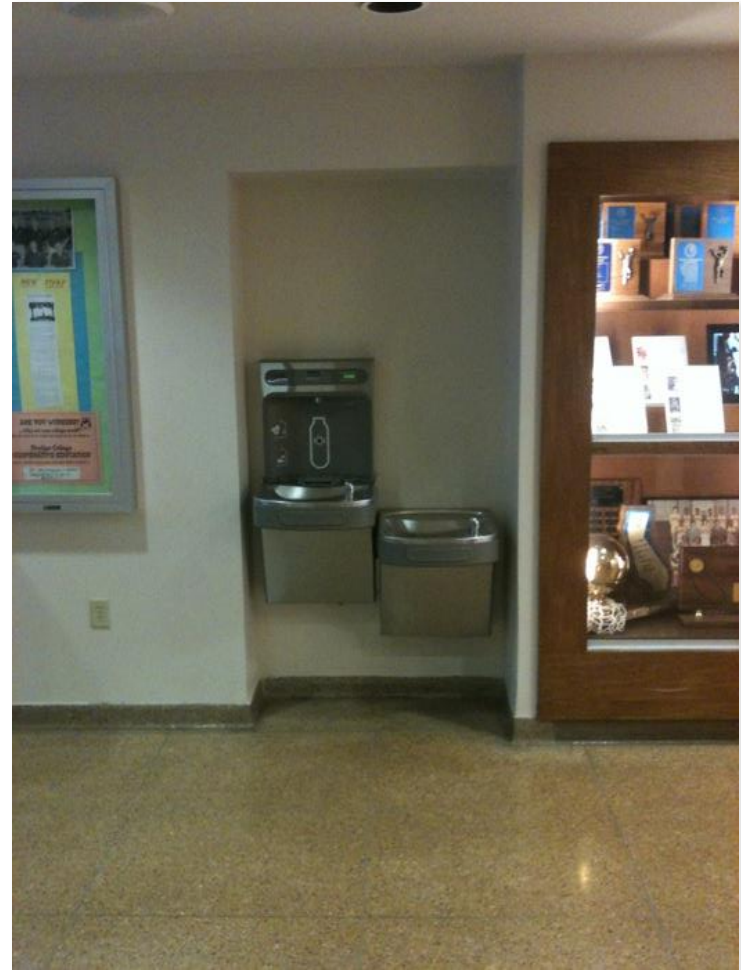
  - ▶ Installation of Elkay bottle filling stations to help minimize plastic bottle waste on the campuses as per the Board of Trustees approved Sustainability Plan.

- ▶ Schedule

  - ▶ Construction: December 2013 – March 2014

# District Wide Hydration Stations

---



# Cañada College & College of San Mateo LED Roadway & Parking Lot Lights

- ▶ **Project Budget**

- ▶ \$500,000

- ▶ **Project Scope**

- ▶ Retrofit parking lot and street light fixtures on the Cañada and CSM campuses (288 Fixtures)

- ▶ **Schedule**

- ▶ RFP Release: March 2014

- ▶ Design: May 2014

- ▶ Bid & Construction: August 2014



Existing Cobra (Metal Halide)



LED

# CSM B9, Library Classroom Remodel

---

- ▶ Project Budget

- ▶ \$100,000

- ▶ Project Scope

- ▶ Renovation of an existing classroom to accommodate more students and to be able to adapt a more modern pedagogy. The room has become very flexible and wireless. Laptops are being issued for student use, WallTalker has been installed at two locations so the front of the room can easily change.

- ▶ Windows facing the library floor were added so the Library staff can monitor activities within the room.

- ▶ Schedule

- ▶ November 2013 – January 2014

# CSM B9, Library Classroom Remodel

*Before*



# CSM B9, Library Classroom Remodel

*After*





# CSM North Gateway Phase II

---

- ▶ Project Budget
  - ▶ \$15,600,000 (\$6M Measure A and \$9.6M State Capital Outlay)
- ▶ Project Scope
  - ▶ Demolition of existing buildings #21 – 29.
  - ▶ Creation of new Gateway Plaza, renovation of existing parking lots 6 A-D.
  - ▶ New Plaza and amphitheater, pedestrian pathways, landscaping and energy efficient LED parking lot lights.
- ▶ Schedule
  - ▶ Construction: Summer 2013 – Summer 2014

# CSM North Gateway

---

## ▶ Construction Status

- ▶ Initial phase complete
  - ▶ Buildings 21-30 demolition and on-site crushing/recycling
  - ▶ Concrete materials of the buildings have been crushed and sifted for reuse on construction of the parking lots
- ▶ Construction resumed from June 2013
  - ▶ Grading work at new parking lots and perimeter roads, underground utilities, main irrigation piping are nearing completion
  - ▶ Light Pole base and conduits, fixtures and cabling installations are in progress
  - ▶ Concrete Placement at Amphitheater seating and 'Plaza of the Sun' are in progress
  - ▶ Earthwork at Overlook Wall area is in progress
- ▶ Project Completion expected end of Summer 2014

## ▶ Contract Status

- ▶ \$3,423,891 (45 % of total contract) paid through end of February 2014

# CSM North Gateway

---



CSM N Gateway Site – before construction



# CSM North Gateway Project Design



CSM North Gateway Project – Design overview

# CSM North Gateway

---



Amphitheater Seating with Building 36 in the background

# CSM North Gateway

---



View of the Amphitheater Seat Walls

# CSM North Gateway

---



Concrete Seat wall work at 'Plaza of the Sun'  
(View towards N of campus and along the N-axis towards the bay)

# CSM North Gateway

---



Colored Concrete axial stairs toward Planetarium



# CSM North Gateway

---



**Underground Utilities being installed**  
(Storm water detention structure in foreground and treatment structures)

# Skyline B5, Library Carpet Replacement

---

- ▶ Budget
  - ▶ \$150,000
- ▶ Scope
  - ▶ Installation of new carpet throughout the Library and surrounding study rooms and offices.
- ▶ Schedule
  - ▶ Winter Break 2013

# Skyline B5, Library Carpet Replacement

## *Construction*



# Skyline B5, Library Carpet Replacement

*Complete*

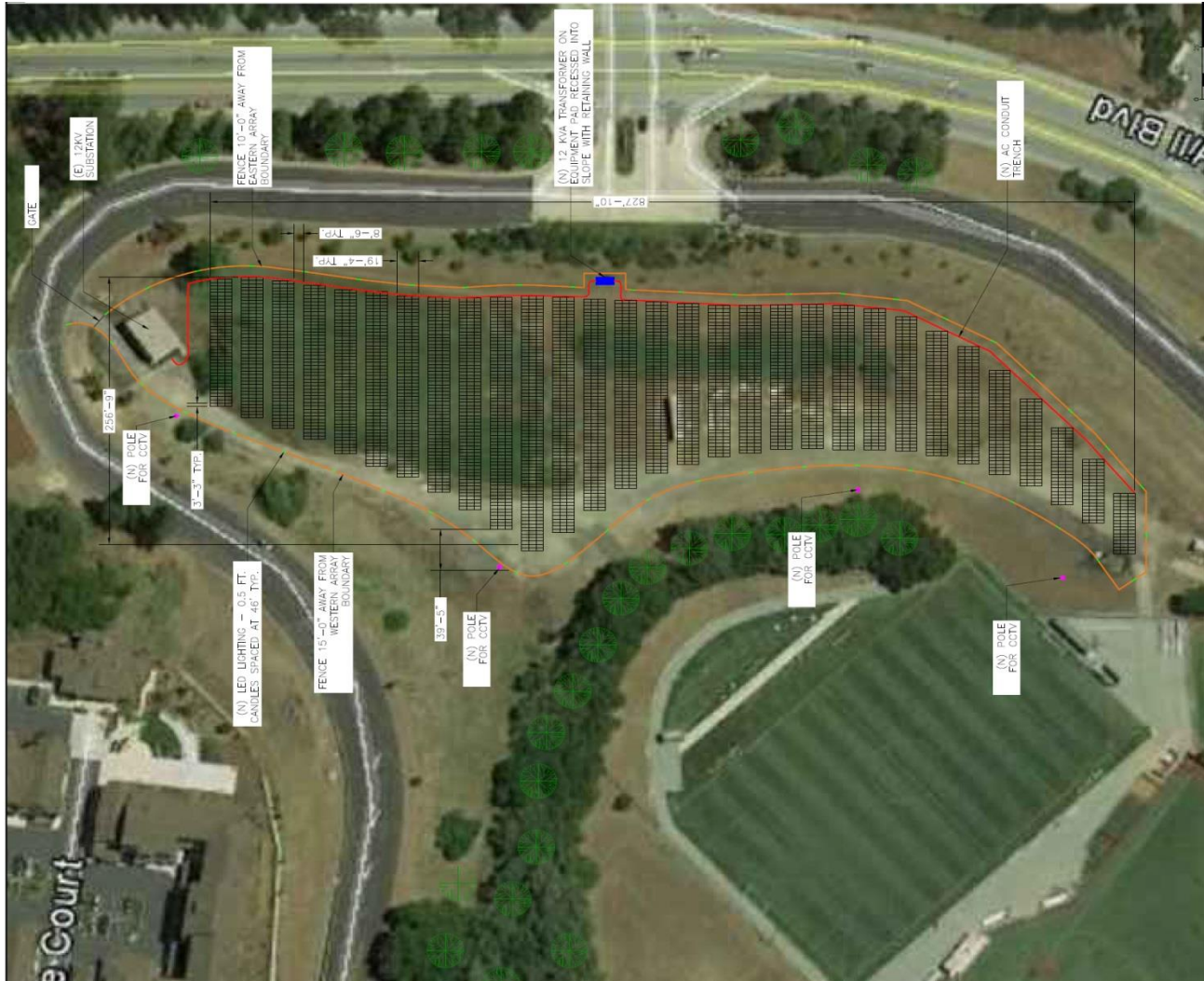


# Cañada College Solar Photovoltaic Project

---

- ▶ Budget \$5,816,000
  - ▶ \$2,788,421 Local funds (PG&E Savings By Design)
  - ▶ \$1,566,000 Measure A
  - ▶ \$716,500 California Solar Initiative
  - ▶ \$500,000 Prop. 39 (approximate)
- ▶ Project Scope
  - ▶ Design-Build project to build a 1.1 MW Solar Photovoltaic system at Cañada College.
- ▶ Schedule
  - ▶ Vendor Selection – Winter 2013
  - ▶ Design Completion – Spring 2014
  - ▶ Construction Completion – Fall 2014

# Solar Photovoltaic Design Layout



# Cañada College Solar Photovoltaic Project

---

*Solar PV Site, Preconstruction condition*



# District Wide Athletic Fields Replacement

---

- ▶ Budget
  - ▶ \$6,000,000 (Redevelopment)
- ▶ Project Scope
  - ▶ Installation of new next generation synthetic turf at the 8 existing synthetic turf fields on three campuses.
- ▶ Schedule
  - ▶ Summer 2013
    - College of San Mateo Football Field - Completed
    - Skyline College Lower Soccer Field - Completed
  - ▶ Winter 2013
    - Cañada College Soccer Field – In progress
    - Skyline College Upper Soccer Field - Completed
  - ▶ Summer 2014
    - ▶ College of San Mateo Baseball Field – Board approved February 2014
      - Cañada College Baseball Field - Board approved February 2014
      - Skyline College Upper Baseball Field - Board approved February 2014
  - ▶ Summer 2015
    - College of San Mateo Softball Field





Cañada College



Skyline College



College of San Mateo

# Cañada College, Soccer Field Turf Replacement

---



# Skyline Upper Soccer Field



Migrating goal lines  
(former field)



Shock pad



Organic infill

# Question & Answer

---

[www.smccd.edu/facilities](http://www.smccd.edu/facilities)

José D. Nuñez, LEED AP

Vice Chancellor

Facilities Planning, Maintenance & Operations

(650) 574-6512

[nunezj@smccd.edu](mailto:nunezj@smccd.edu)

