



SAN MATEO COUNTY
COMMUNITY
COLLEGE DISTRICT

Bond Oversight Committee CIP Project Update

May 2, 2013

District Demographics

(as of January '13)

	Campus Acreage	Gross Square Feet	Assignable Square Footage	Buildings	Parking	Student Headcount (Spring '13)	Student FTES (Spring '13)	Full-Time Faculty & Staff (Spring '13)
Cañada	132	352,215	233,973	17	1,688	6,790	1,903	157
CSM	154	702,110	460,897	35	4,108	9,401	3,267	267
Skyline	110	541,325	369,300	29	2,495	10,053	3,471	235
Chancellor's Office	N/A	24,929	13,383	1	Incl. in CSM	0	0	205
TOTAL	396	1,620,579	1,077,553	82	8,291	26,244	8,641	864

Cañada College Tennis Courts

- ▶ Project Budget

 - ▶ \$1,026,817

- ▶ Project Scope

 - ▶ Installation of modular restroom, grading and repaving of parking lot, installation of parking lot lighting, security cameras and new bleachers. The courts have been resurfaced and will receive new wind screens and netting.

- ▶ Schedule

 - ▶ Construction: October 2012 - December 2012

Cañada College Tennis Courts



CSM Edison Lot

- ▶ Project Budget

- ▶ \$3,300,000

- ▶ Project Scope

- ▶ Demolish Buildings 20, 20A and Greenhouse, and rebuild parking lot, pedestrian walkways, landscaping and lighting.

- ▶ Schedule

- ▶ Design DSA: November 2012

- ▶ DSA approval: May 2013

- ▶ Bid & Construction: Pending Lawsuit Resolution

CSM Edison Lot



CSM East Perimeter Road Sidewalk Addition

- ▶ Project Budget
 - ▶ \$350,000
- ▶ Project Scope
 - ▶ New sidewalk to prevent students from walking in the road with oncoming traffic.
- ▶ Schedule
 - ▶ Construction: Summer 2013

CSM East Perimeter Road (Existing Condition)



CSM North Gateway

- ▶ Project Budget

- ▶ \$15,600,000 (\$6M Measure A and \$9.6M State Capital Outlay)

- ▶ Project Scope

- ▶ Demolition of existing buildings #21 – 29. Creation of new Gateway Plaza, renovation of existing parking lots 6 A-D. New Plaza and amphitheater, pedestrian pathways, landscaping and energy efficient LED parking lot lights.

- ▶ Schedule

- ▶ Construction: Summer 2013 – January 2014

CSM North Gateway

▶ Lawsuit Status

- ▶ Site has been idle in April due to neighbor lawsuit
- ▶ The Courts has issued a ruling on 4/29/13 allowing us to proceed with the balance of the project while the appeal process takes its course

▶ Construction Status

- ▶ Initial phase complete
 - ▶ Buildings 21-30 demolition and on-site crushing/recycling
 - ▶ Concrete materials of the buildings have been crushed and sifted on-site for reuse on construction of the parking lots
 - ▶ Metal reinforcing bars and steel have been recycled off-site
- ▶ Construction will proceed again on May 28 after CSM final exams week
- ▶ Project Completion expected in January 2014

▶ Contract Status

- ▶ \$778,557 (10% of total contract) paid through end of March 2013

CSM North Gateway



CSM North Gateway



Previous location of Buildings 21 – 24

CSM North Gateway



Previous Center Quad area

CSM North Gateway



CSM North Gateway



CSM North Gateway



Previous location of Buildings 25 – 27



CSM North Gateway



Crushed recycled concrete storage



Skyline College

Theater Seat Replacement Project

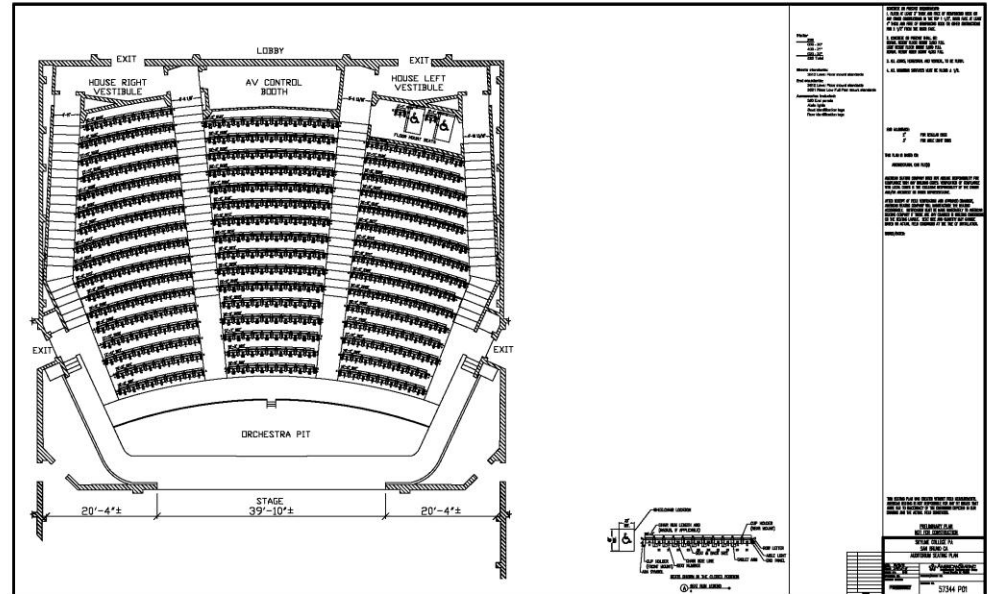
- ▶ Budget
 - ▶ \$230,000
- ▶ Scope
 - ▶ Replace original seats that were installed in 1969
 - ▶ Upgrade existing step lights to LED
 - ▶ Theater interior painting
- ▶ Schedule
 - ▶ Summer 2013

Skyline College Theater Seat Replacement Project

- 522 Seats to be replaced



Example of an existing chair



District Wide Athletic Fields Replacement

- ▶ Budget
 - ▶ \$6,000,000
- ▶ Project Scope
 - ▶ Installation of new next generation synthetic turf at the 8 existing synthetic turf fields on three campuses.
- ▶ Schedule
 - ▶ Summer 2013
 - College of San Mateo Football Field
 - Skyline College Lower Soccer Field
 - ▶ Summer 2014
 - Cañada College Soccer Field
 - Cañada College Baseball Field
 - College of San Mateo Baseball Field
 - Skyline College Upper Soccer Field
 - ▶ Summer 2015
 - College of San Mateo Softball Field
 - Skyline College Baseball Field



Cañada College



Skyline College



College of San Mateo



District Wide Sustainability Plan

- ▶ Project Budget
 - ▶ \$65,000
- ▶ Schedule
 - ▶ October 2013 – June 2014
 - ▶ Plans for all three colleges to be presented to the Board of Trustees for Resolution on June 12, 2013

District Wide Digital Infrastructure Mapping Project

- ▶ Project Budget
 - ▶ \$35,000
- ▶ Scope
 - ▶ Consolidation of all information related to underground utilities. Final product will be layers on a Google Earth background image.

District Wide Digital Infrastructure Mapping Project

The image shows a Google Earth interface displaying a digital infrastructure map of a campus. The map is overlaid with a complex network of colored lines representing various utility systems. A popup window titled "LANDMARK" provides detailed information for a selected manhole.

LANDMARK

Network:	Sanitary Sewer
ID:	SSMH#002
Type:	Manhole
Model:	-
Size:	48" Diameter
Cover:	24" Cast Iron Frame and Cover
Datum:	-
Surface Elevation:	505.0 +/-
Invert Out:	500.5
Inverts In:	-
Date Constructed:	12/1960
Notes:	Buried?
Source Document:	Site Development Phase 1
Status:	Not Verified

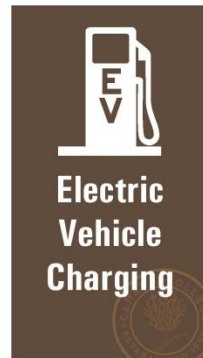
Copyright: CSW/Stuber-Stroeh Engineering

Places

- College of San Mateo
 - Air
 - Cable/Television
 - Communication
 - Electric
 - Fiber Optic
 - Fire Hydrants
 - Fire Alarm
 - Gas
 - Hydronic
 - Joint Trench
 - Lighting
 - Sanitary Sewer
 - Caps
 - Cleanouts
 - Filter Systems
 - Floor Drains
 - Grease Interceptors
 - Manholes
 - SSMH#001
 - SSMH#002
 - SSMH#003
 - SSMH#004
 - SSMH#005
 - SSMH#006
 - SSMH#007
 - SSMH#008
 - SSMH#009
 - SSMH#010
 - SSMH#011
 - SSMH#012
 - SSMH#013
 - SSMH#014
 - SSMH#015
 - SSMH#016
 - SSMH#017
 - SSMH#018
 - SSMH#019

District Wide Electric Vehicle Charging Stations

- ▶ Project Budget
 - ▶ \$242,000 (\$140K Measure A, \$102K CEC Grant and Match from Schneider Electric)
- ▶ Locations
 - ▶ 2 Parking Lots at each of the three Colleges
 - ▶ District Office Parking Lot
 - ▶ Wall Unit in the Automotive Technology Program at Skyline



Proposition 39

Energy Efficiency & Renewal Projects

- ▶ Cañada College Photovoltaic 1.1 MW
- ▶ Cañada College LED Roadway & Parking Lot Lights
- ▶ College of San Mateo LED Roadway & Parking Lot Lights
- ▶ College of San Mateo & Skyline College Cogen Replacement
- ▶ District Wide Measurement & Verification

Question & Answer

www.smccd.edu/facilities

José D. Nuñez, LEED AP

Vice Chancellor

Facilities Planning, Maintenance & Operations

(650) 574-6512

nunezj@smccd.edu

