

SAN MATEO COUNTY
COMMUNITY COLLEGE DISTRICT

Bond Oversight Committee

November 1, 2012
SKY 6-203

Projects in Design

- ▶ Cañada College Parking Lot 10 Expansion Project
 - ▶ Construction Project Manager – Linda Rizzoli
 - ▶ A/E – CSW/Stuber-Stroeh Engineering Group, Inc.
 - ▶ Project Scope – Expand the existing parking lot 10, to enlarge the capacity from the existing 20 parking stalls to approximately 100 stalls. Also includes upgrade of storm drain system, lighting, and signage.
 - ▶ Budget - \$850,000
 - ▶ Schedule
 - Design, RFP and Award: November 2012 – January 2013
 - DB Design & Construction: February 2013 - August 2013

Cañada Lot 10 Expansion



Projects in Design

- ▶ CSM B12 & Colonnades Reroof
 - ▶ Construction Project Manager – Peter Hempel
 - ▶ A/E - Allana Buick & Bers Inc.
 - ▶ Project Scope: Reroof Building 12 and campus walkway colonnades and replace roof drains.
 - ▶ Budget - \$496,000
 - ▶ Schedule
 - Bid: January 2012
 - Construction: April 2012 to June 2012

Colonnades Reroof



Projects in Design

- ▶ CSM Edison Lot
 - ▶ Construction Project Manager – Peter Hempel
 - ▶ Project Scope – Demolish Buildings 20, 20A and Greenhouse, and rebuild parking lot, pedestrian walkways, landscaping and lighting.
 - ▶ Budget - \$3,300,000
 - ▶ Schedule
 - Design DSA: November 2012
 - DSA approval: May 2013
 - Bid & Construction: Pending Lawsuit Resolution

CSM Edison Lot



Projects in Design

- ▶ **District Wide Athletic Field Replacement**
 - ▶ Project Manager – Karen Pinkham
 - ▶ Project Scope – Installation of new next generation synthetic turf at the 8 existing synthetic turf fields on three campuses.
 - ▶ Budget - \$6 Million
 - ▶ Schedule
 - ▶ 3 Fields Spring 2013 (CSM Football, SKY Lower Soccer, Cañada Soccer)
 - ▶ 3 Fields Spring 2014 (CSM Baseball, SKY Upper Soccer, Cañada Baseball)
 - ▶ 2 Fields Spring 2015 (CSM Softball, SKY Baseball)

Projects in Construction

- ▶ **District Office Cooling Tower and Chiller Replacement**
 - ▶ Project Manager - Dan Sarouhan
 - ▶ Budget - \$250,000
 - ▶ Schedule
 - ▶ Construction: November 2012

District Office Cooling Tower and Chiller Replacement



Projects in Construction (RD)

- ▶ Cañada College Tennis Court Improvements
 - ▶ Construction Project Manager – Linda Rizzoli
 - ▶ A/E – Verde Design
 - ▶ Contractor – Robert A. Bothman
 - ▶ Project Scope: Installation of modular restroom, grading and repaving of parking lot, installation of parking lot lighting, security cameras and new bleachers. The courts have been resurfaced and will receive new wind screens and netting.
 - ▶ Budget - \$1,026,817
 - ▶ Schedule
 - Construction: October 2012 - December 2012

Cañada Tennis Court Improvements

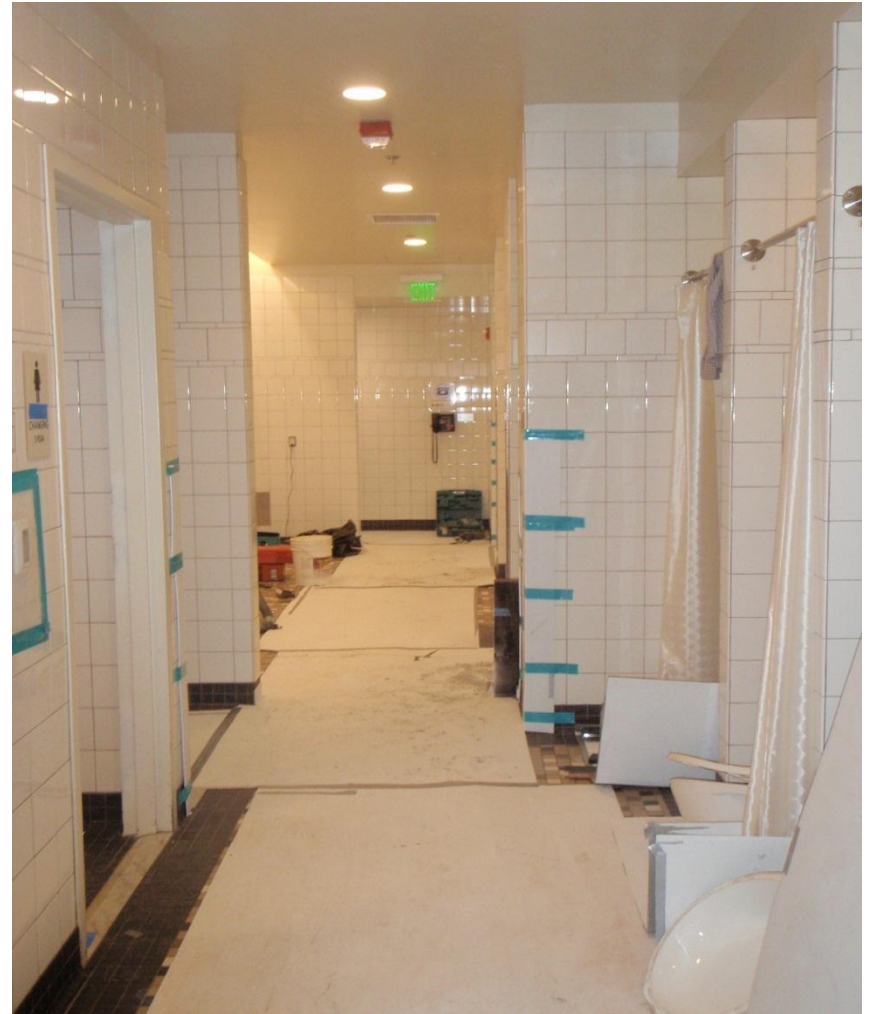


"Facilities Excellence"

Projects in Construction (RD)

- ▶ College of San Mateo Building 5 Locker Room Renovation
 - ▶ Project Coordinator - Jennifer James
 - ▶ Construction Project Manager – Sajid Sulaiman
 - ▶ A/E – Sally Swanson Architects
 - ▶ Contractor – Eternal Construction, Inc.
 - ▶ Project Scope – Reconfiguration of Men’s and Women’s Locker Room areas, installation of new lockers to enhance functionality and maximize locker numbers.
 - ▶ Budget - \$950,000
 - ▶ Schedule
 - Design, Bid and Award: July 2012 – October 2012
 - Construction: October 2012 - December 2012

CSM B5 Locker Rooms



CSM B5 Locker Rooms (RD) (Temporary Walk Way)



Projects in Construction

- ▶ College of San Mateo Building 8 Swing Locker Room Improvements
 - ▶ Construction Project Manager – Sajid Sulaiman
 - ▶ Project Coordinator - Jennifer James
 - ▶ Contractor – Coulter Construction Inc.
 - ▶ Project Scope – Selective improvements to finishes and fixtures in B8 Men's and Women's Locker Room areas.
 - ▶ Project web page
 - <http://www.smccd.edu/accounts/smccd/departments/facilities/CSMBusOps.shtml>
 - ▶ Budget - \$80,000
 - ▶ Schedule
 - Construction: October 2012

CSM B8 Swing Locker Rooms



"Facilities Excellence"

Projects About to Field

- ▶ CSM North Gateway: Phase 2
 - ▶ Construction Project Manager – Peter Hempel
 - ▶ Project web page
 - http://www.smccd.edu/accounts/smccd/departments/facilities/CSM_North_Gateway_02.shtml
 - ▶ Budget - \$15,737,724
 - ▶ Schedule
 - Construction:TBD pending lawsuit filed by Citizens for a Green San Mateo

CSM North Gateway



John Russen
Sales Manager

SHARPSHOTS
AERIAL PHOTOGRAPHY

o: 408.915.2650
f: 408.915.2690
Sales@SharpShotsAerial.com

College of San Mateo

College of San Mateo North Gateway Part2

Print# 120623028
Flight Date: 06/23/2012

SHARPSHOTS 408.915.2650
www.sharpsotsaerial.com

Projects in Close Out

- ▶ Cañada College B5 Dining Room Renovation
 - ▶ Construction Project Manager – Peter Hempel
 - ▶ Project Web Page
 - <http://www.smccd.edu/accounts/smccd/departments/facilities/CanDiningRoom.shtml>
 - ▶ Renderings
 - <\\appserv2\DisCIP2\Projects\343 CAN B5 6 Dining Room\Design\4.CDs\Renderings from DSA FCD Set>
 - ▶ Contractor – John Plane Construction
 - ▶ Budget - \$2,061,000
 - ▶ Schedule
 - Occupancy: August 2012

Cañada B5 Dining Room Renovation



Projects in Close Out

- ▶ CSM Hillsdale Lots Storm Drain Upgrade and Slope Repairs
 - ▶ Construction Project Manager – Sajid Sulaiman
 - ▶ A/E – CSW/Stuber-Stroeh Engineering Group, Inc.
 - ▶ Contractor – D & D Pipelines, Inc.
 - ▶ Project Scope – Installation of new storm water detention system, upgrades to selected existing drain inlets and pipes, and repairs to eroded slopes at CSM Hillsdale Parking Lots.
 - ▶ Budget - \$285,000
 - ▶ Schedule
 - Construction: July 2012 - September 2012
 - Occupancy: September 2012

CSM Hillsdale Lot



Projects in Close Out

- ▶ Skyline B6 Public Area Renovation
 - ▶ Construction Project Manager – Linda Rizzoli
 - ▶ Contractor - Coulter Construction, Decker Electric
 - ▶ Project Scope - Connect dining and seating areas, new finishes at fireplace and local controls for fireplace, wooden dropped ceiling “stage” area, enhanced service counters, nooks for food reheating and supplies, new lighting, colored concrete flooring and new dining furniture and seating.
 - ▶ Budget - \$969,331
 - ▶ Schedule
 - Occupancy: August 2012

SKY B6 Dining Room/Public Area



SKY B6 Dining Room/Public Area



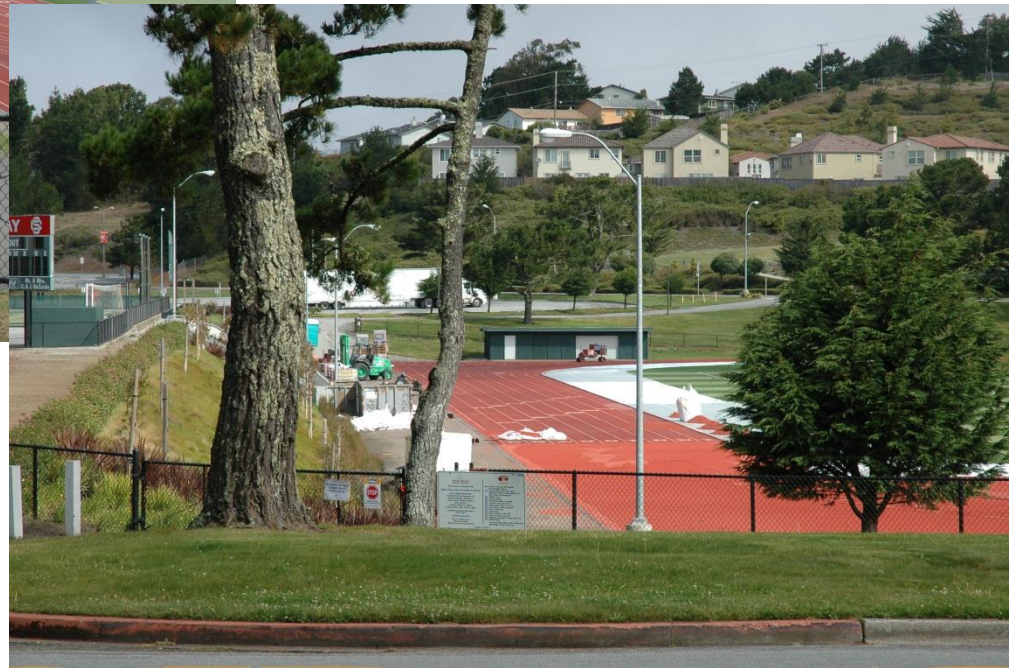
Projects in Close Out (RD)

- ▶ Skyline Running Track Resurfacing
 - ▶ Construction Project Manager – Linda Rizzoli
 - ▶ Contractor – Hellas Construction
 - ▶ Project Scope - Patch track and apply a new coating to resurface the track, and provide new lane markings.
 - ▶ Budget - \$350,000
 - ▶ Schedule
 - Occupancy: August 2012

SKY Track Resurfacing



SKY Track Resurfacing



Projects In Close Out

- ▶ **Skyline Disability Resource Center (DRC)**
 - ▶ Project Coordinator - Kanjana Srisupatpongsa
 - ▶ Project Manager - Sarah Supple, JKL Construction
 - ▶ Project Scope - Build out of existing college space into new Smart Classrooms, Computer Lab, Testing Lab and Administrative Offices. Improvements included HVAC, electrical, lighting, low voltage, fire alarm, finishes and furniture.
 - ▶ Budget - \$485,000
 - ▶ Schedule
 - ▶ Occupancy: October 2012

SKY Disability Resource Center (DRC)



SKY Disability Resource Center (DRC)



Question & Answer

www.smccd.edu/facilities

José D. Nuñez, LEED AP

Vice Chancellor

Facilities Planning, Maintenance & Operations

(650) 574-6512

nunezj@smccd.edu

