

SAN MATEO COUNTY
COMMUNITY COLLEGE DISTRICT

Capital Improvement Program Status Report

Bond Oversight Committee
December 3, 2008

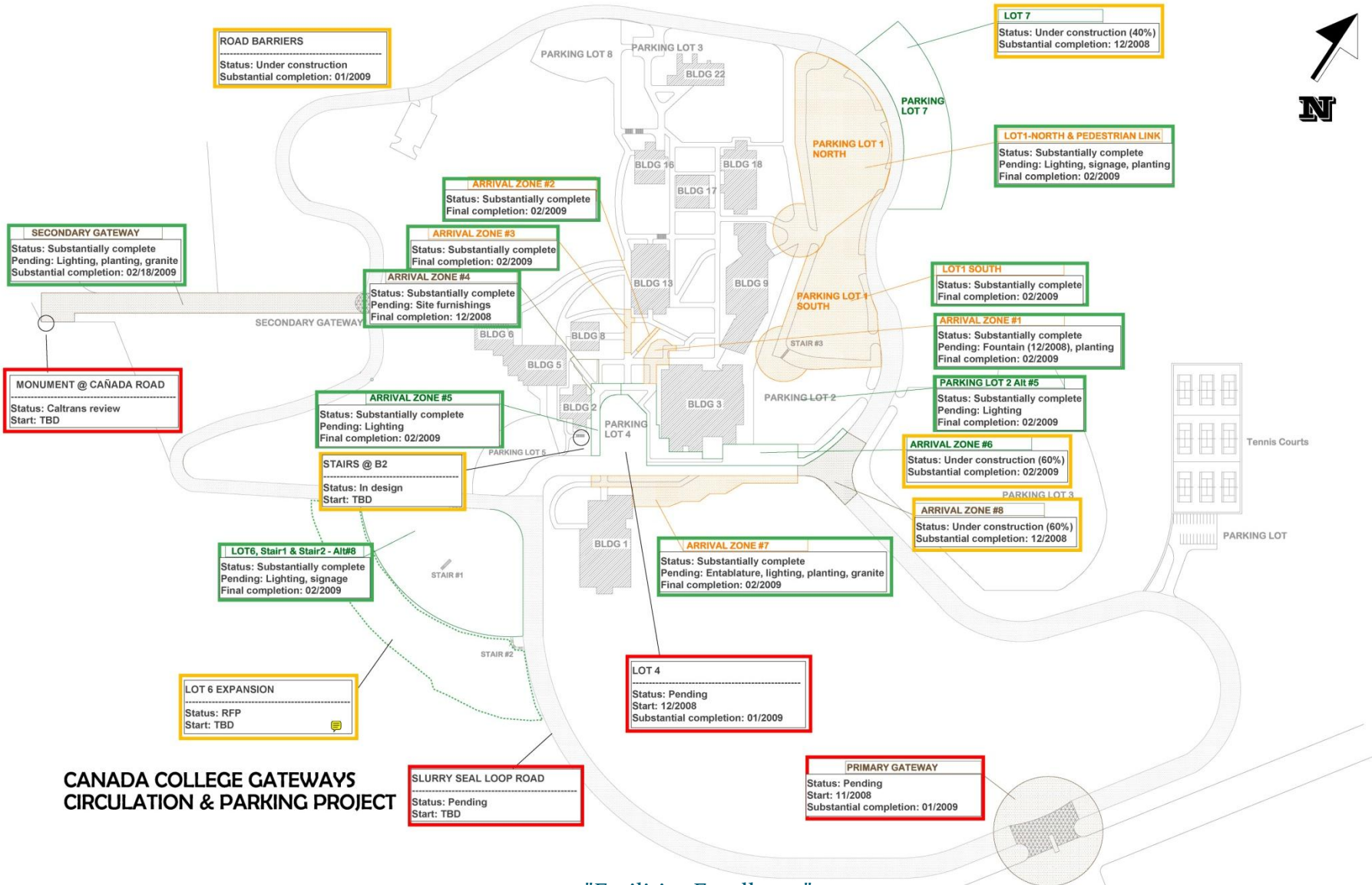


Cañada College Gateways/Circulation /Parking Project



- ✓ Project is on schedule and within budget; there have been no injuries or Safety issues to date!
- ✓ As of Dec. 1st, 2008, Parking Lot #7 will be open for Student parking; at this milestone ALL 1,560 parking stalls on Campus are available for full use
- ✓ Public transportation provided by Sam Trans & Redi-Wheels has operated effectively throughout the course of the Project
- Completion: March 2009

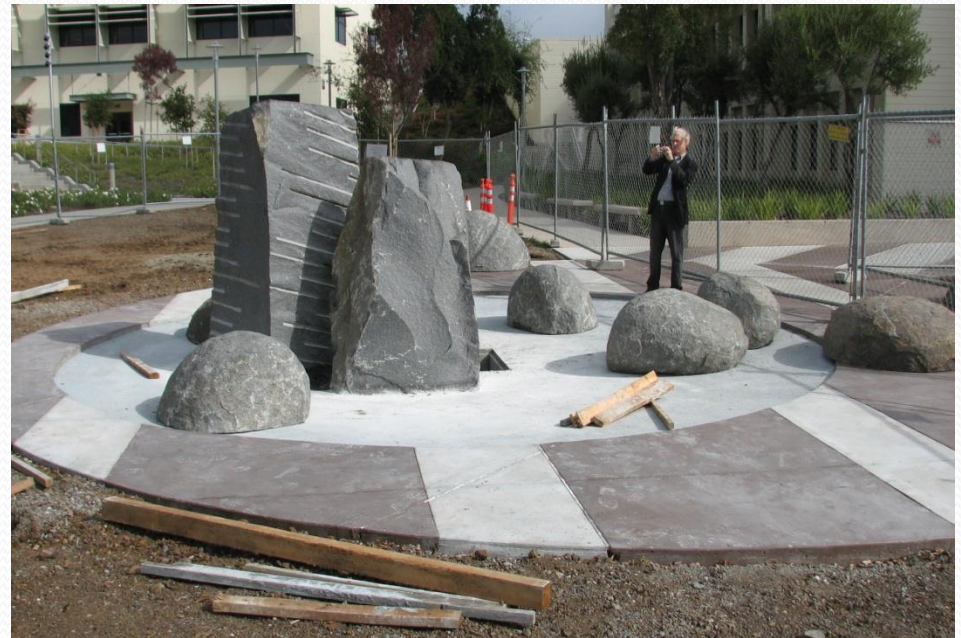
Cañada College Gateways Project Schedule Updates



**CANADA COLLEGE GATEWAYS
CIRCULATION & PARKING PROJECT**

Cañada College Gateways – Courtyard Water Feature

- ✓ Courtyard Water Feature is about 85% substantially complete
- ✓ Awaiting delivery of Cobblestones which will surround the largest Granite pieces



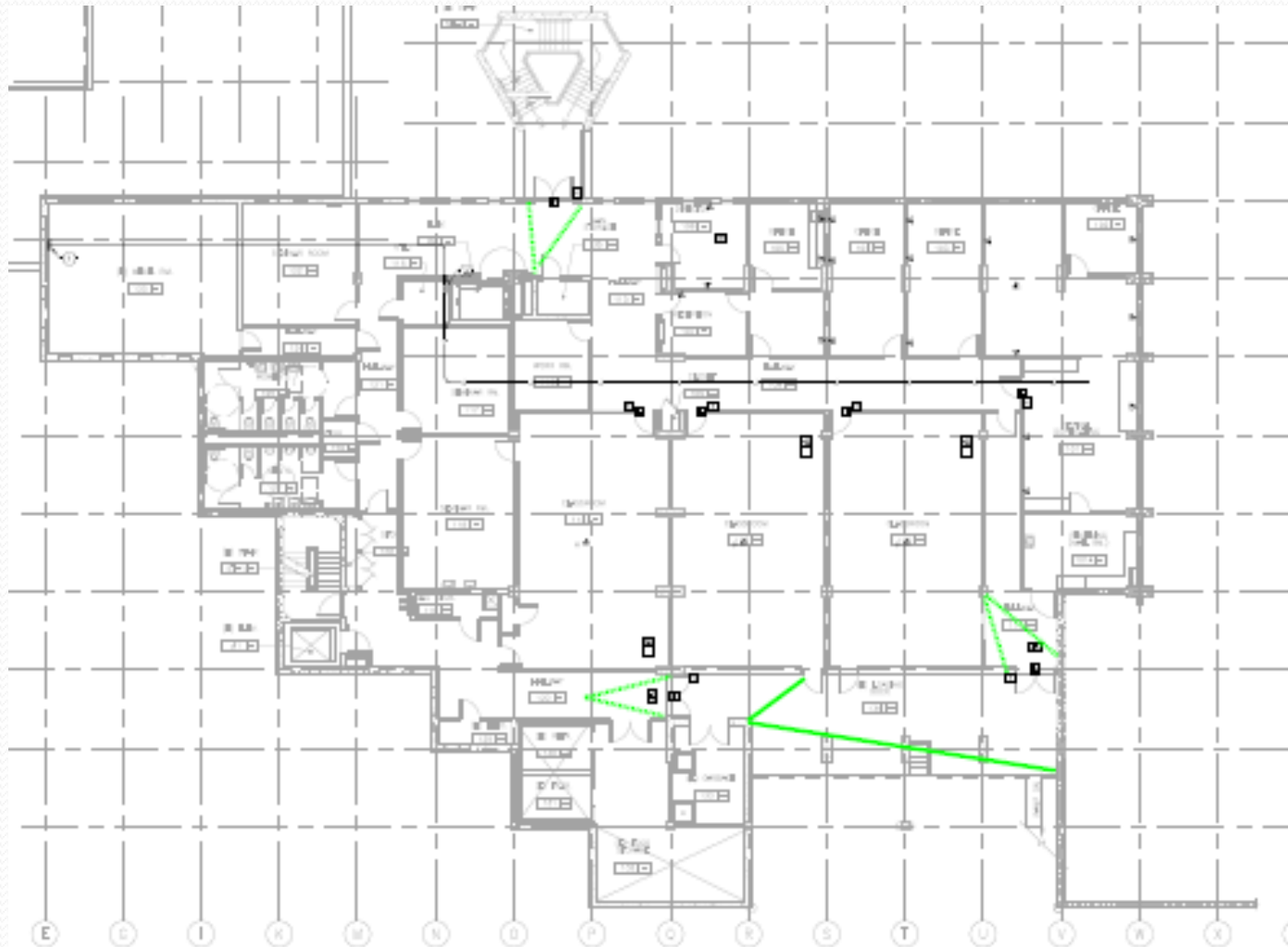
"Facilities Excellence"

Cañada College Building 5/6 Modernization First Floor



"Facilities Excellence"

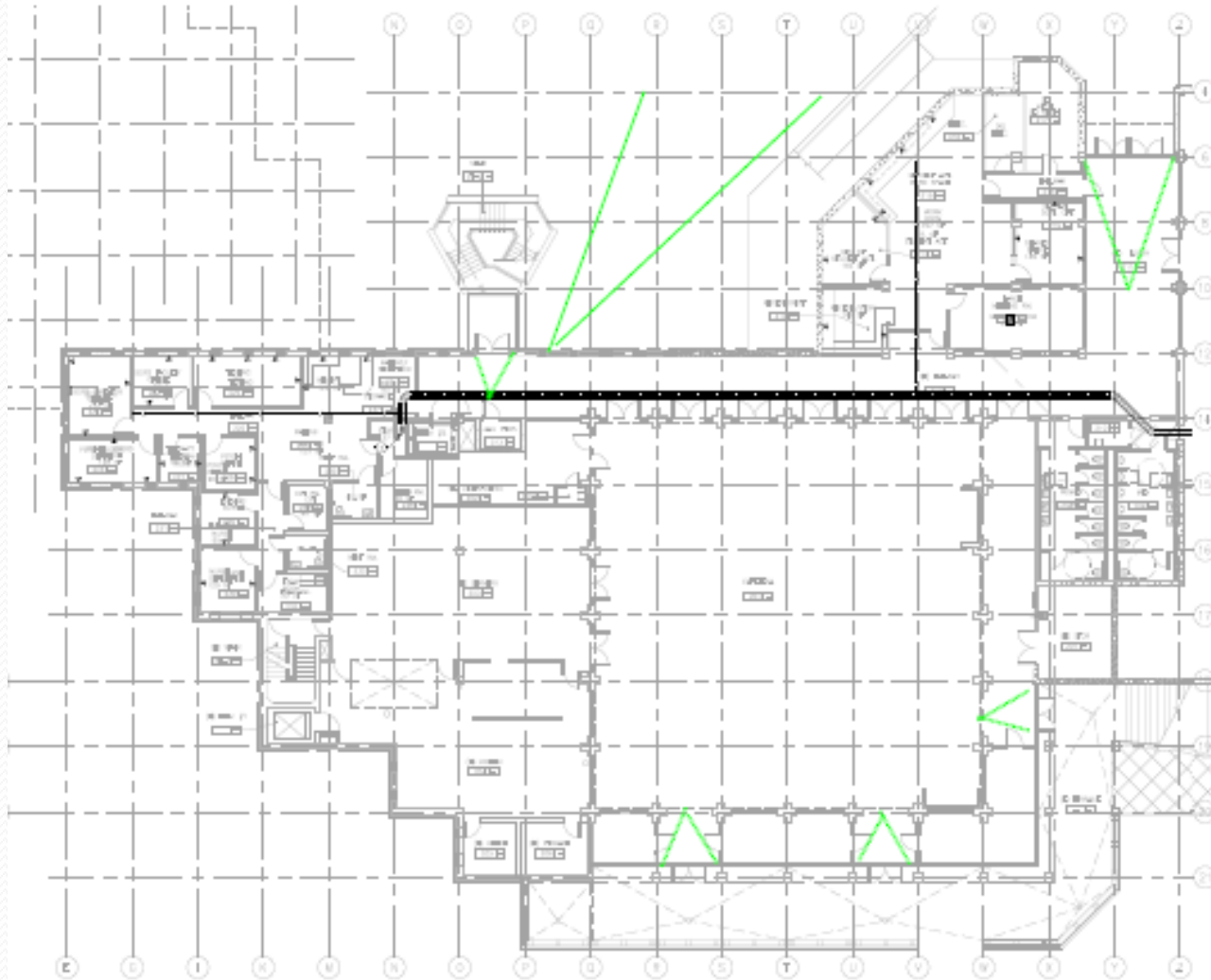
Cañada College Building 5/6 Modernization Second Floor



1 TECHNOLOGY - SECOND FLOOR

"Facilities Excellence"

Cañada College Building 5/6 Modernization Third Floor



1 TECHNOLOGY - THIRD FLOOR

"Facilities Excellence"

Cañada College Building 5/6 Modernization

- ✓ Construction Documents submitted to DSA and awaiting for approval by end of this month
- ✓ State Funded Project

- DSA Approval: December 2008
- Advertise and Bid for Construction: Start February 2009
- Award Construction Contract: Spring 2009
- Construction: Spring 2009 – Spring 2010
- Substantial Completion: Summer 2010
- Occupancy: Fall 2010

Cañada College Building 8 Renovation

- ✓ Construction is currently 65% substantially complete
- Substantial Completion: March 2009
- Occupancy: April 2009



College of San Mateo CIP2 Design-Build Project

- ✓ New Building 5N – Allied Health & Wellness Building
- ✓ New Building 10N – Student Center
- ✓ Demolition of Buildings 5, 6, 10, 11, 13, T1 and Kiosko
- ✓ Sitework Improvements: Gateways & Quad Improvements, Parking, Paving, Sidewalk, Roadways
- ✓ Central Chiller Plant
- ✓ 12kVA Campus Power Distribution System Upgrade

- Design and Construction Period: Spring 2008 – Summer 2011

Building 5N: Allied Health & Wellness Building



- ✓ Documents are stamped and approved by DSA for construction
 - ✓ Footings are at 90% of pour completion, grading is complete
 - ✓ Utility trenching is complete and slab pour will begin soon
 - ✓ Elevator shafts have been lined in preparation for installation of equipment
-
- Groundbreaking: March 2009
 - Completion: Striving for January 2010



"Facilities Excellence"

Building 10N: Administration and Student Services



- ✓ Construction documents submitted to DSA for review
 - ✓ Demolition of Buildings 10 and 11 scheduled for late January
 - ✓ **Urban Search and Rescue Training exercise with FEMA and local emergency responders scheduled January 17th/18th**
 - ✓ Building pad preparation and construction to begin after demolition
-
- DSA Approval: January 2008
 - Groundbreaking: May 2009
 - Completion: March 2011

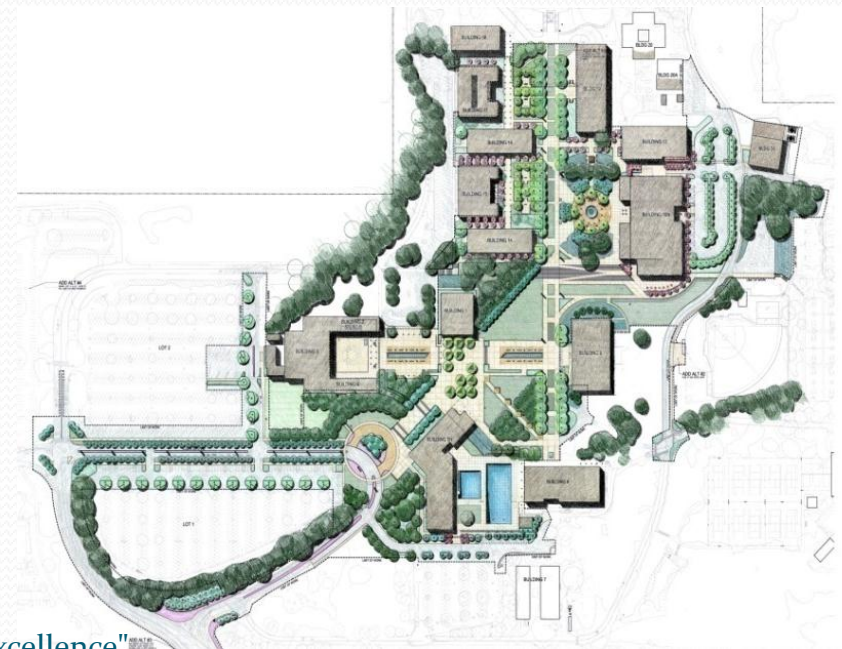
Sitework Improvements

- ✓ Sitework - 1st Phase demolition in progress
- ✓ Fine Arts Courtyard work in progress
 - ✓ Demolition of concrete and formwork for pour back complete
- Fine Arts Courtyard Completion: January 2009
- Sitework – 1st Phase Start Date: Spring 2009
- Sitework – 2nd Phase Start Date: Spring 2010
- Overall Sitework Completion: March 2011

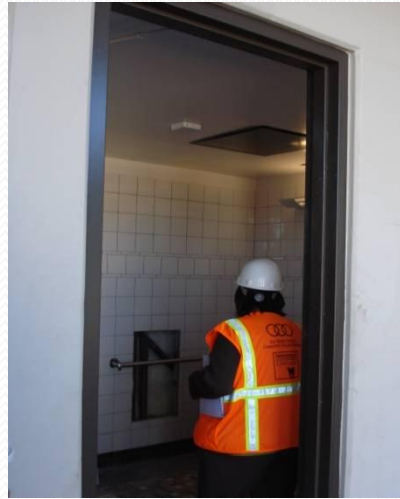


Infrastructure Improvements

- ✓ 12kVA Campus Electrical Distribution System upgrade to be completed during Winter Break 2008
 - ✓ **Total Campus closure December 19-January 1, 2009**
 - ✓ Equipment is ordered and delivery expected in 1st week of December
- ✓ Central Chiller Plant design in process
 - ✓ Completion Fall 2009



College of San Mateo Buildings 2/4 Modernization



- ✓ Construction is currently 95% substantially complete
- Furniture Installation: December 8th, 2008
- Completion: Early December 2008
- IEQ: January 5th 2009
- Occupancy: January 12th, 2009



College of San Mateo Building 9 Modernization

Scope of Project

- ✓ KCSM FM Studio Remodel / Office refresh
- ✓ Library Classroom modernization
- ✓ Library increase in convenience power and data in discrete areas
- ✓ Base Buildings Improvements
 - ✓ Complete restroom remodel
 - ✓ Re-balance of HVAC system
 - ✓ Repair leaking deck
 - ✓ Repairs to lobby floors and surface mounted entrances floor mats
 - ✓ Mitigate water entering the building during rainy season
- Design Phase: Fall 2008 – January 2009
- DSA Approval: Spring 2009
- Construction: Summer 2009
- Completion: Fall 2009



College of San Mateo Building 14 Modernization



- ✓ Construction is currently 90% substantially complete
- Furniture Installation: Week of December 15th
- Completion: Mid December 2008
- IEQ: January 18th, 2009
- Occupancy: Spring 2009 Semester

College of San Mateo Building 16 Modernization



- ✓ Construction is currently 90% substantially complete
- ✓ A new internal lift will be installed to increase accessibility
- ✓ Creatively designed lobbies will be activated and restrooms renovated which include ADA access

- Furniture Installation: Week of December 15th
- Completion: During Winter Break
- IEQ: January 18th, 2009
- Occupancy: Spring 2009 Semester

College of San Mateo Buildings 12/15/17/34 Modernization

Scope of Project (Design Build)

- ✓ Building 12 Swing
- ✓ Building 15 Modernization
 - ✓ Modernization of Faculty office
 - ✓ Complete renovation of restrooms
 - ✓ Build new Main Distribution Frame room
 - ✓ Development of Program office suites
 - ✓ Mild freshening of Interior Courtyard



College of San Mateo Buildings 12/15/17/34 Modernization

Scope of Project (con't)

- ✓ Building 17 Modernization
 - ✓ Modernization of Faculty Offices
 - ✓ Complete renovation of restrooms
 - ✓ Build new Main Distribution Frame room
 - ✓ Mild freshening of Interior Courtyard

- ✓ Building 34
 - ✓ Preparation to receive fire apparatus
 - ✓ Preparation to become a warehouse for Facilities

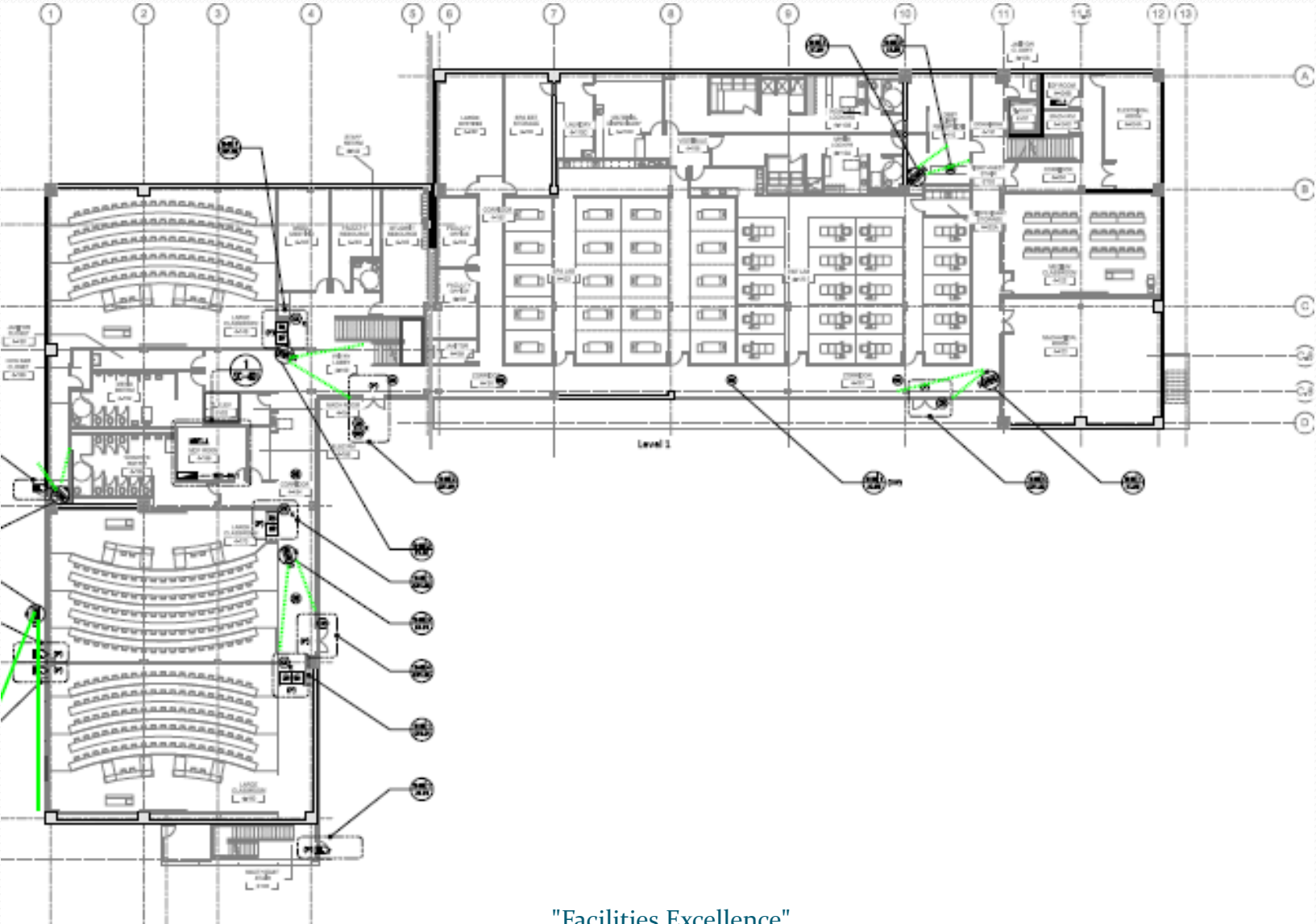
- Design Build Entity Selection: December 2008
- B12 Swing Prep: Spring 2009
- B15 Construction: April – September 2009
- B17 Construction: September 2009 – January 2010
- B34 Construction: January – March 2010



Skyline College CIP2 Design Build Project

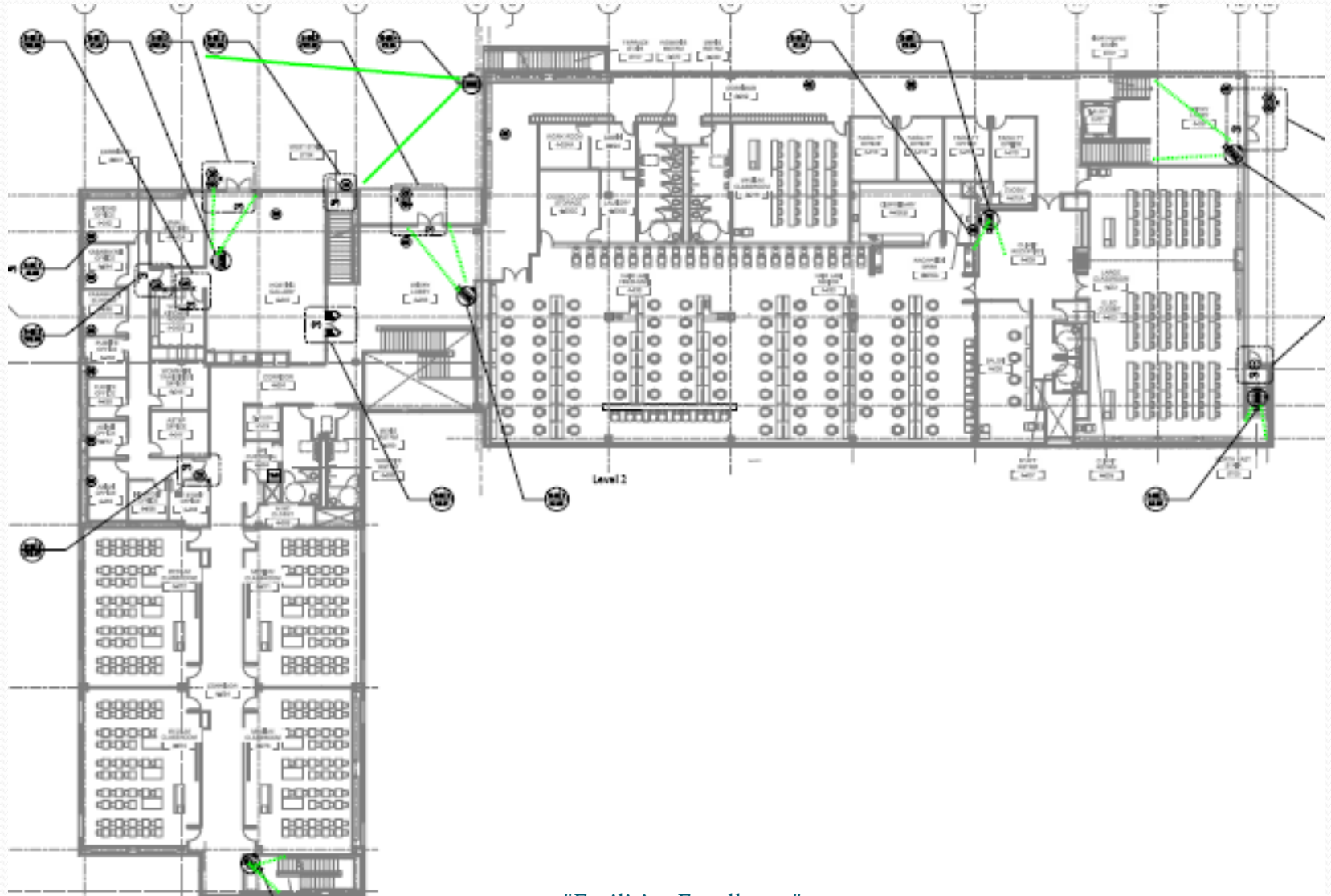
- ✓ New Building 4N – Multicultural, Cosmetology, Classroom and Administration
 - ✓ New Building 11N - Automotive Transmission
 - ✓ Sitework Improvements: Gateways & Quad Improvements, Parking, Paving, Sidewalk, Roadways
 - ✓ Boiler Plant Upgrade
 - ✓ 12kVA Electrical Upgrade
-
- Design and Construction period: Spring 2008 – Spring 2011

Building 4N: Cosmetology and Administration Level 1



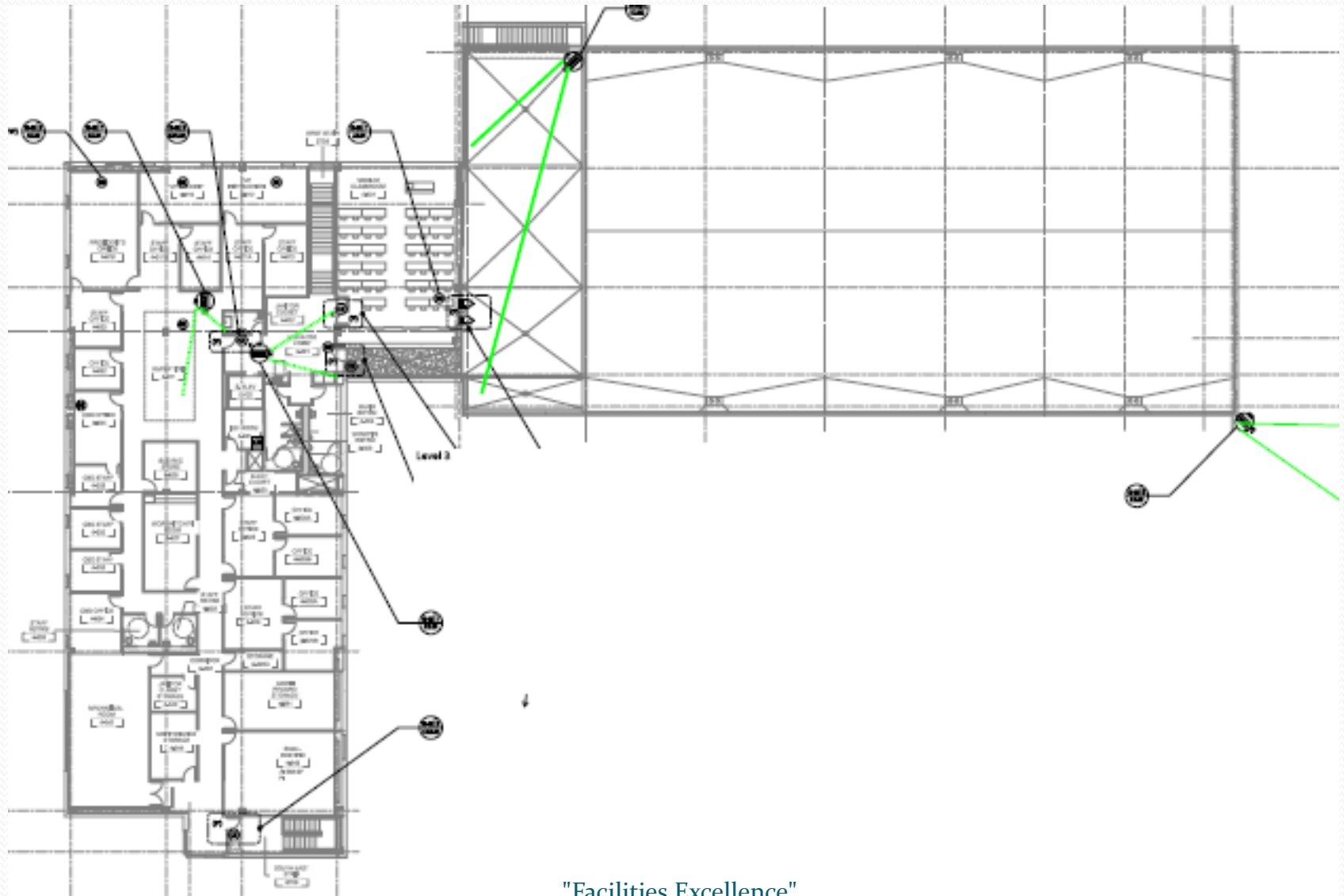
"Facilities Excellence"

Building 4N: Cosmetology and Administration Level 2



"Facilities Excellence"

Building 4N: Cosmetology and Administration Level 3



"Facilities Excellence"

Building 4N: Cosmetology and Administration

✓ Construction Documents are being prepared for submittal to DSA

✓ Project “Fly-through”

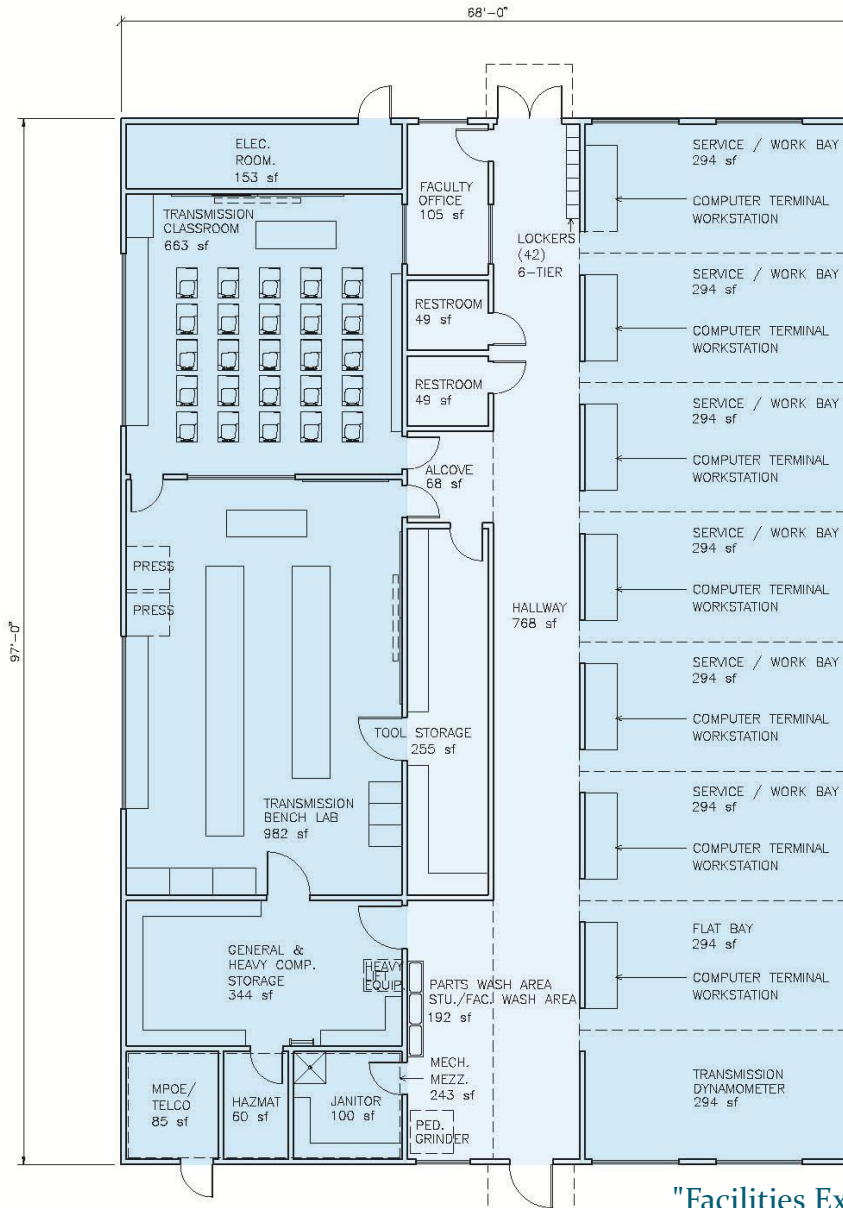


2008-11-11Larch.skp

- Site (Increment 1) Groundbreaking: January 2009
- Structure (Increment 2) Construction Start: March 2009
- Interiors (Increment 3) Submittal to DSA: February 2009
 - Construction Start: May 2009



Building 11N: Auto Transmission



- Submittal to DSA: January 2009
- Construction Start: Summer 2009

"Facilities Excellence"

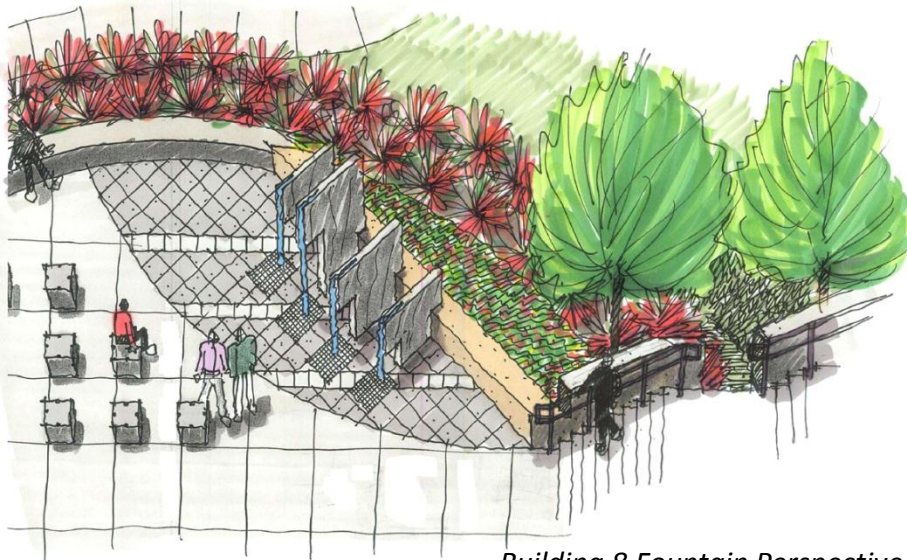
Sitework Improvements



"Facilities Excellence"

Sitework Improvements

- ✓ Campus Sitework improvements construction documents are being prepared
 - Submittal to DSA: December 2008
 - Construction Phase 1 Start: Summer 2009
 - Construction Phase 2 Start: Summer 2010



Building 8 Fountain Perspective



ENTRY MONOLITH AT
NORTH ENTRY

Skyline College Building 7 Modernization

- ✓ Building modernization is 98% complete
- ✓ Interior was completely renovated to include new mechanical, electrical and data systems
- ✓ Gross Building Area: 38,127
- ✓ Total Project Cost: \$12,606,139
- Occupancy:
 - Faculty : Winter Break 2008
 - Students: Spring 2009



"Facilities Excellence"

Skyline College Facilities Maintenance Center



- ✓ Three new steel framed building will house electrical and carpenter's shops, vehicle maintenance, storage and employee locker and restrooms
 - ✓ Steel had been erected and wall sheathing installed
- ✓ Site work includes grading, new driveways and landscaping
 - ✓ Work is progressing with finish grading complete and retaining walls constructed
- ✓ The project is 55% substantially complete

– Completion: May 2009



Question & Answer

<http://www.smccd.edu/accounts/smccd/departments/facilities/>

José D. Nuñez
Vice Chancellor
Facilities Planning, Maintenance & Operations
(650) 574-6512
nunezj@smccd.edu