

SAN MATEO COUNTY  
COMMUNITY COLLEGE DISTRICT

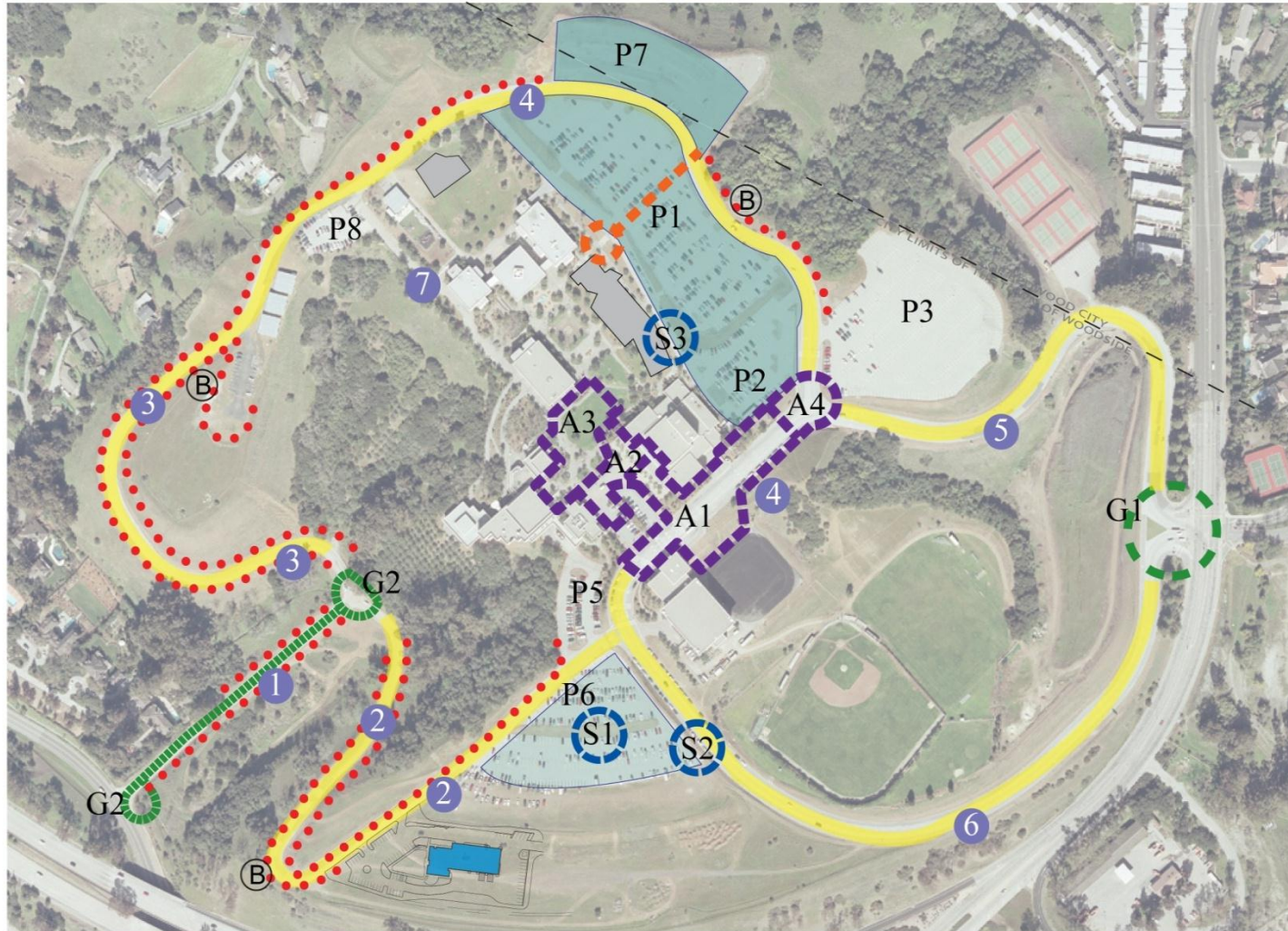
# Capital Improvement Program Status Report

Bond Oversight Committee  
May 19, 2008



# Cañada College Gateways/Circulation /Parking Project

Construction phase: June 2008 – May 2009



- G1 - Primary Entry
  - G2 - Secondary Entry
  - A1 - Arrivals Area
  - A2 - Arrival Plaza
  - A3 - Inner Plaza
  - Pedestrian Link  
Bldg. 9 -- P1
  - P1 } Parking Lots  
P2 } Overlay
  - P3 } Proposed Facility Housing
  - P7 - Parking Lot Re-do
  - P6 - Parking Lot Slurry Seal
  - Roadway Slurry Seal
  - (B) - Road Barrier
  - S1, S2 & S3 - Access Stairways
- OTHER COMPONENTS:**
- Campus Signage
  - Campus Lighting Upgrades
  - Campus Security and Safety  
Emergency Phones
  - Site Furniture: Selection of  
Families/Allowance

# Cañada College Gateways/Circulation/Parking Project

## Selection of Design-Builder

- District Staff prequalified six Design Builders to submit proposals for this project
- District Staff and Swinerton Management & Consulting reviewed the five proposals submitted from the prequalified Design Builders to score their responsiveness to the Request for Proposal
  - Summary of the reviewer's assessment and scoring of the five proposals:

	Evaluation Factor	Maximum Possible Score	Robert A. Bothman, Inc.	Big-D Pacific Builders	John Plane Construction	Schembri Construction	ValleyCrest
1.	Price	40	39	35	33	37	37
2.	Project Management Plan	20	18	14	11	18	10
3.	Technical Expertise	10	8	8	6	8	7
4.	Acceptable Safety Record	10	9	4	6	9	7
5.	Skilled Labor Force Availability	10	8	9	6	9	4
6.	Life Cycle Costs over 25 years	10	10	10	10	10	10
	<b>TOTALS</b>	100	<b>92</b>	<b>80</b>	<b>72</b>	<b>91</b>	<b>75</b>

- The District interviewed the top two ranked Design Builders in late April and early May, who were allowed the opportunity to present their best and final proposals
- Staff performed due diligence on these final proposals with focus on price, project schedule and management plan, and company history
- Based on this evaluation, the panel recommended that the Board of Trustees award the Design-Build Contract to Robert A. Bothman, Inc.
- On May 14, 2008 the Board approved the Contract Award



# Cañada College Gateways Project Schedule



Project: Canada College Gateways -F  
Date: Mon 5/5/08

Task Milestone Rolled Up Task Rolled Up Progress External Tasks Group By Summary   
 Progress Summary Rolled Up Milestone Split Project Summary

# College of San Mateo CIP2 Design-Build Project

- ✓ New Building 5N – Workforce and Wellness Center
- ✓ New Building 10N – Student Services, Administration, Bookstore, Food Service, Instruction
- ✓ Demolition of Buildings 5, 6, 10, 11, 13, T1 and Kiosko
- ✓ Sitework Improvements: Gateways & Quad Improvements, Parking, Paving, Sidewalk, Roadways
- Design and Construction Period: Spring 2008 – Summer 2011



# Building 5N: Workforce and Wellness Center



# Building 5N: First Floor



# Building 5N: Second Floor



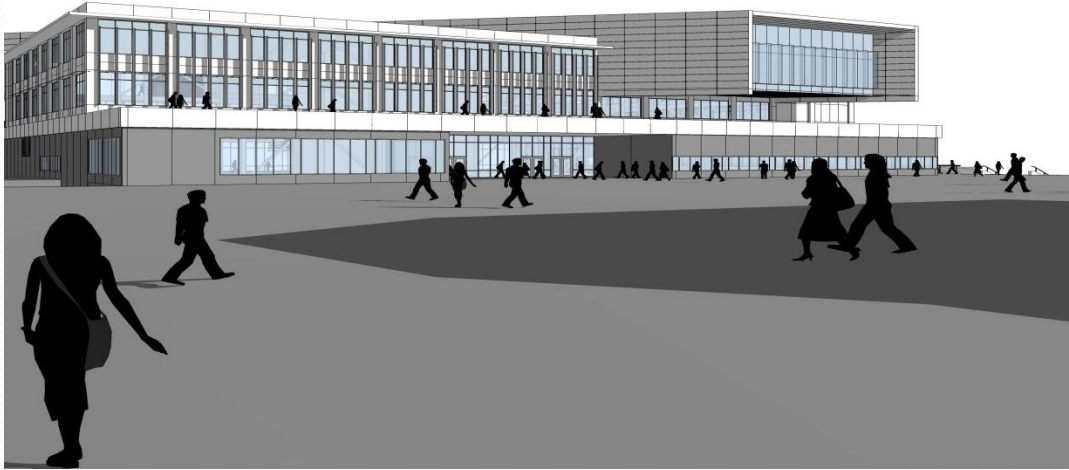


# Building 5N: Third Floor

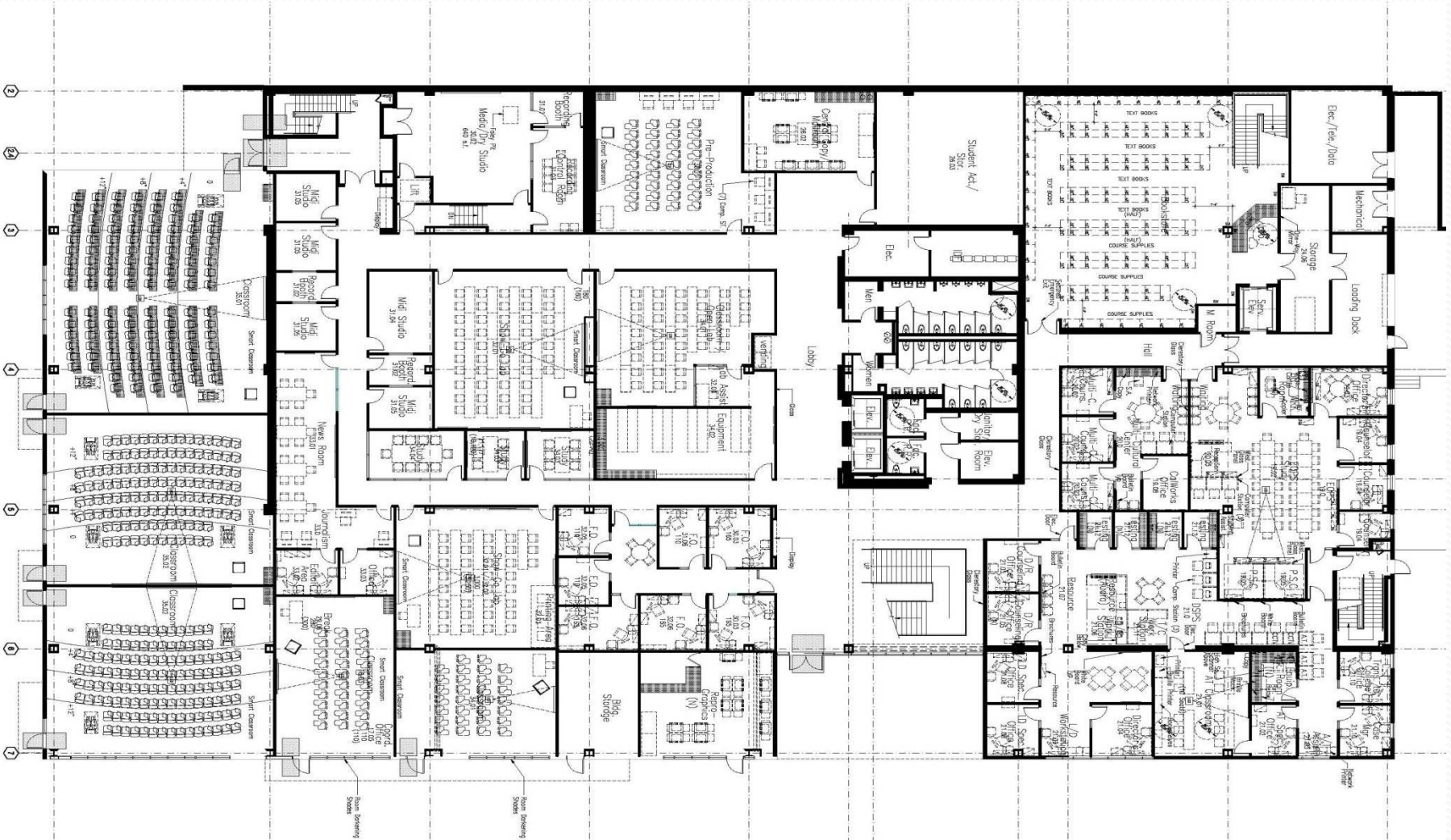


1 Occupancy, Egress and Door Plan - Level 3  
 1/31/10

# Building 10N: Administration and Student Services

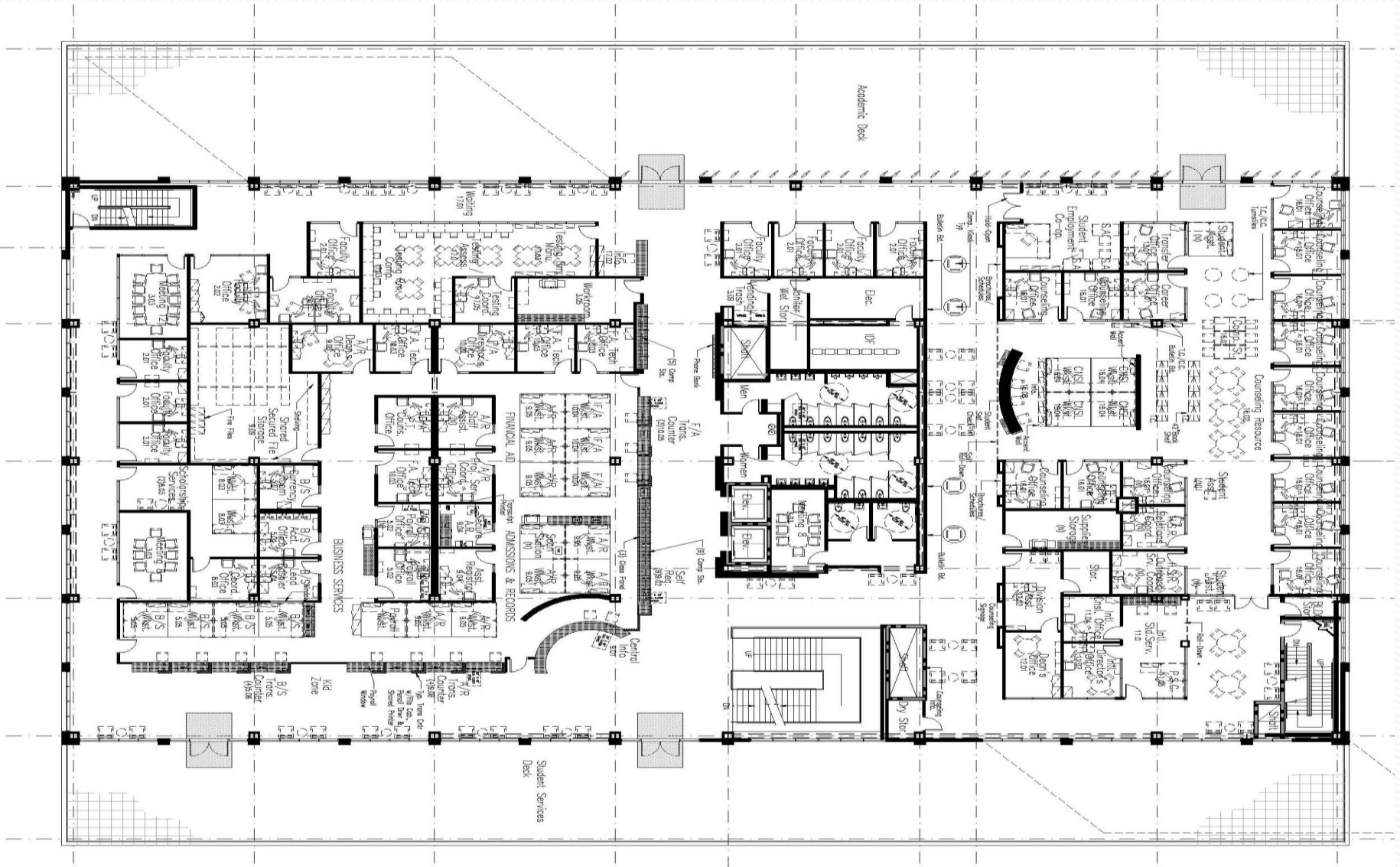


# Building 10N: First Floor



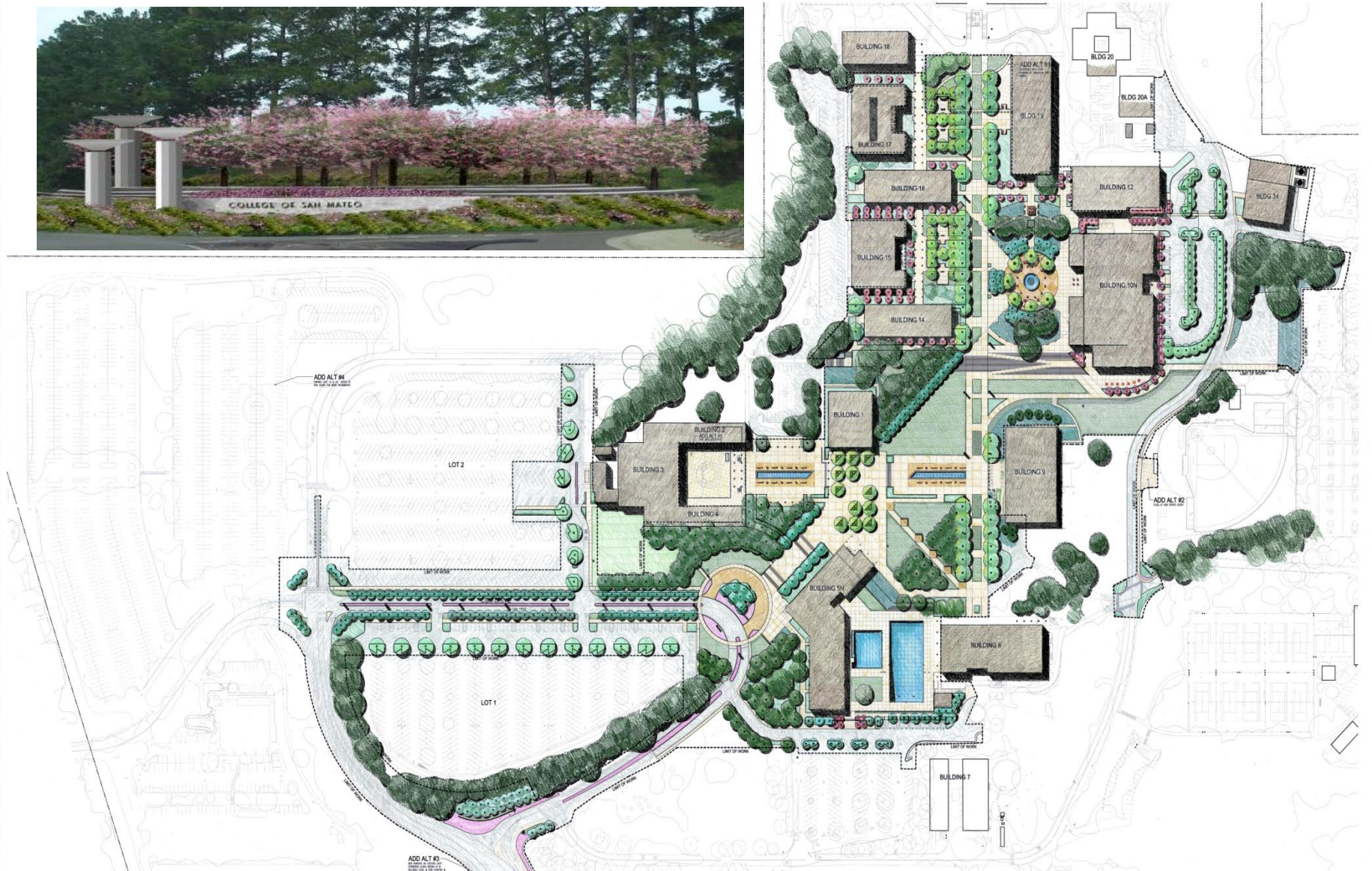


# Building 10N: Third Floor





# Sitework Improvements





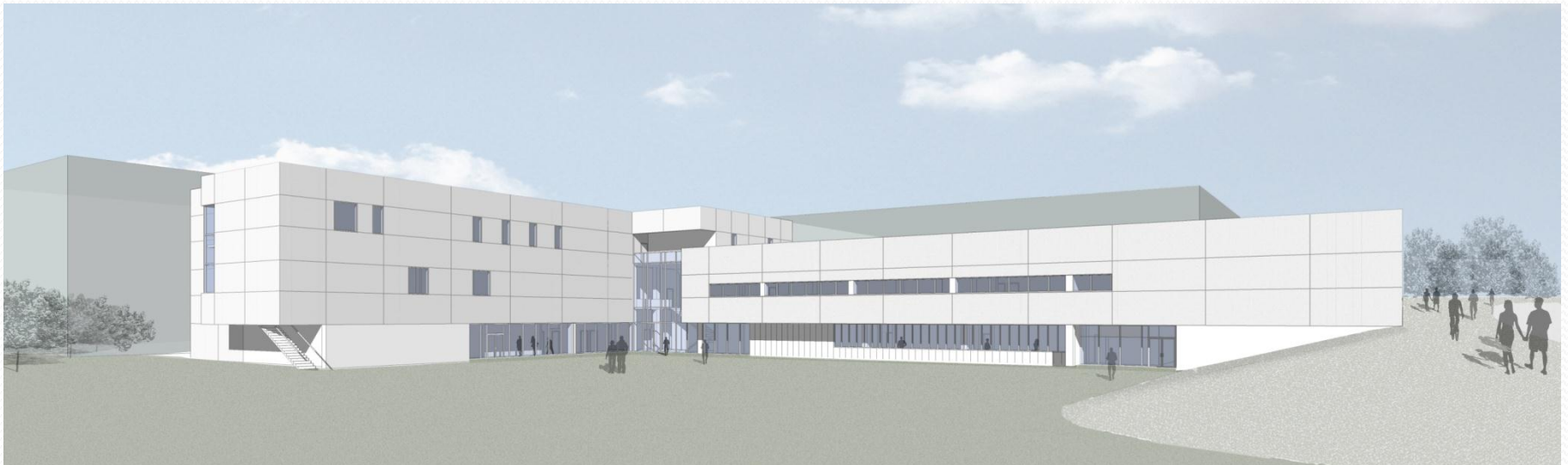


# Skyline College CIP2 Design Build Project

- ✓ New Building 11N - Auto Transmission
  - ✓ New Building 4N - Cosmetology, Administration and Wellness
  - ✓ Sitework Improvements: Gateways & Quad Improvements, Parking, Paving, Sidewalk, Roadways
- 
- Design and Construction period: Spring 2008 – Spring 2011



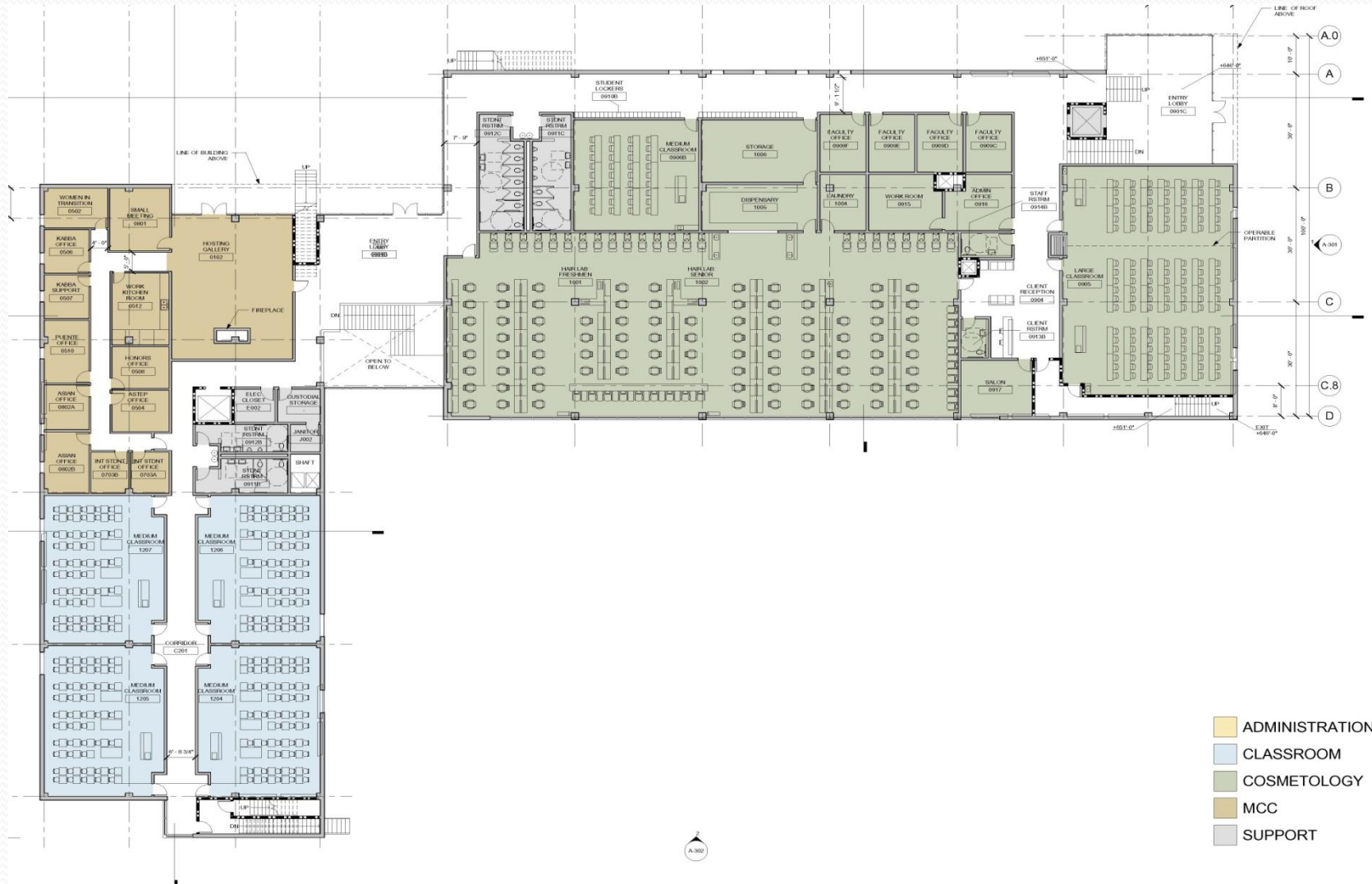
# Building 4N: Cosmetology, Administration and Wellness



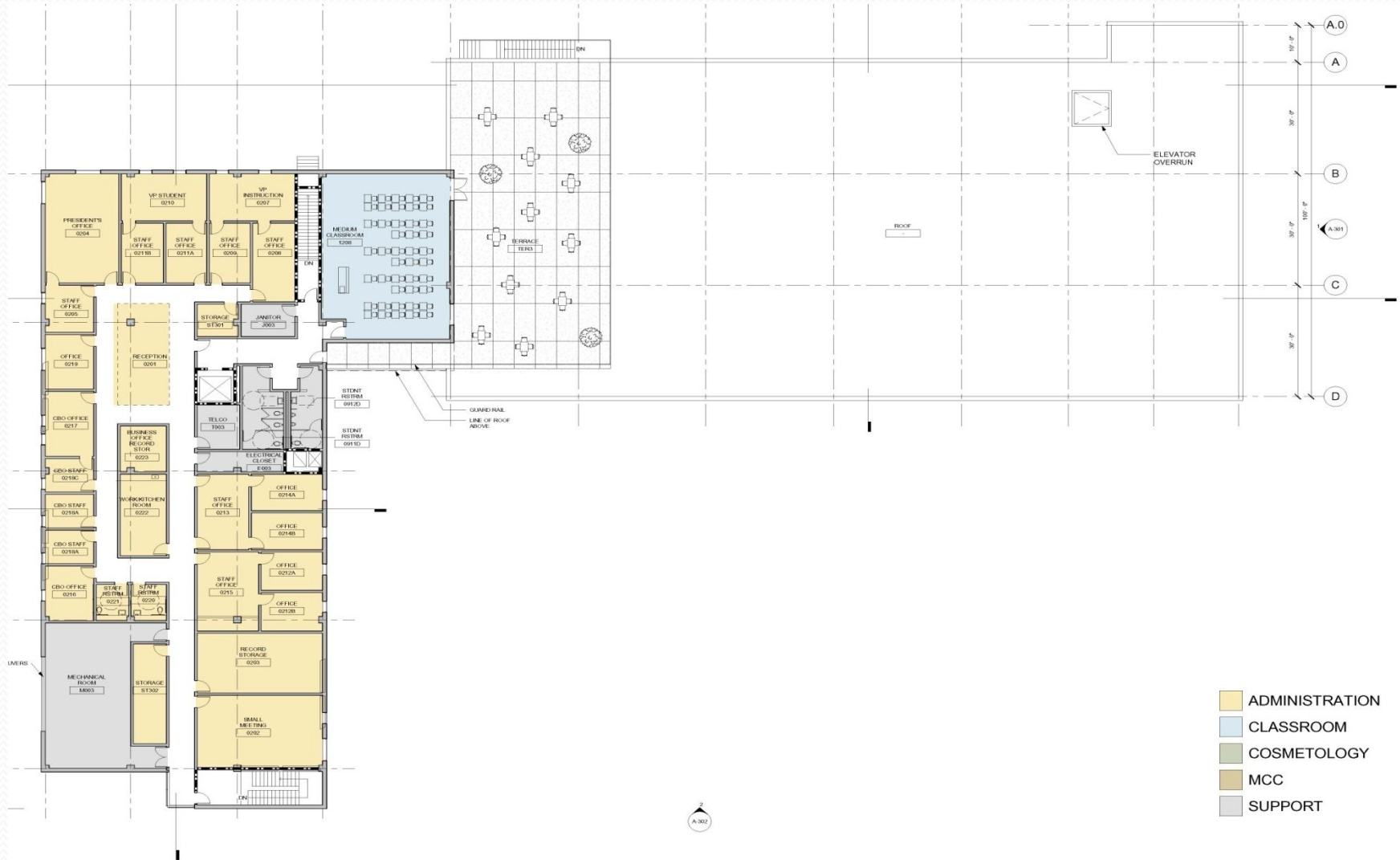
# Building 4N: First Floor



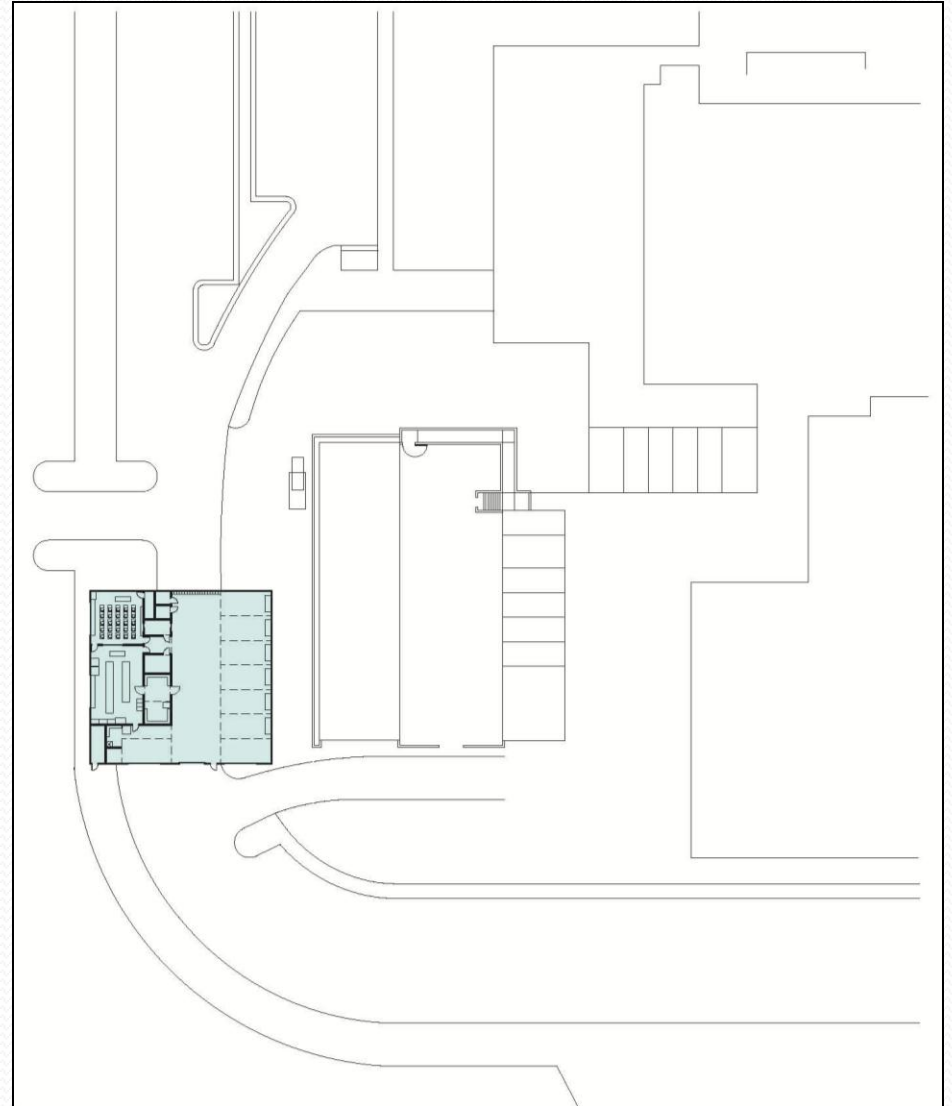
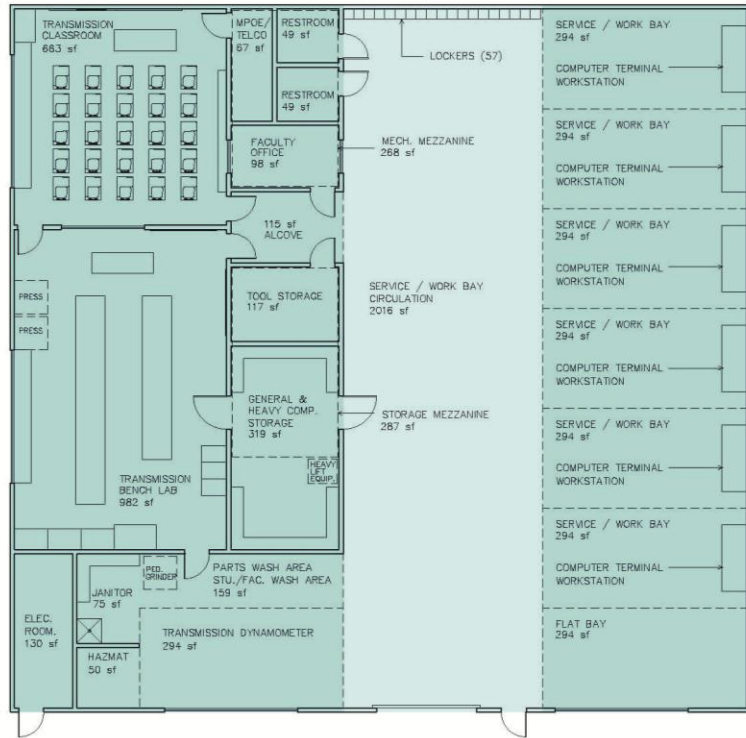
# Building 4N: Second Floor



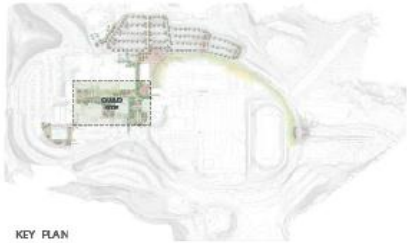
# Building 4N: Third Floor



# Building 11N: Auto Transmission



# Sitework Improvements



07 | OLIAD SITE | ENLARGED LANDSCAPE PLAN

LANDSCAPE AREAS







# Question & Answer

<http://www.smccd.edu/accounts/smccd/departments/facilities/>

Linda da Silva  
Executive Director  
Construction Planning  
(650) 358-6726  
[dasilva@smccd.edu](mailto:dasilva@smccd.edu)

