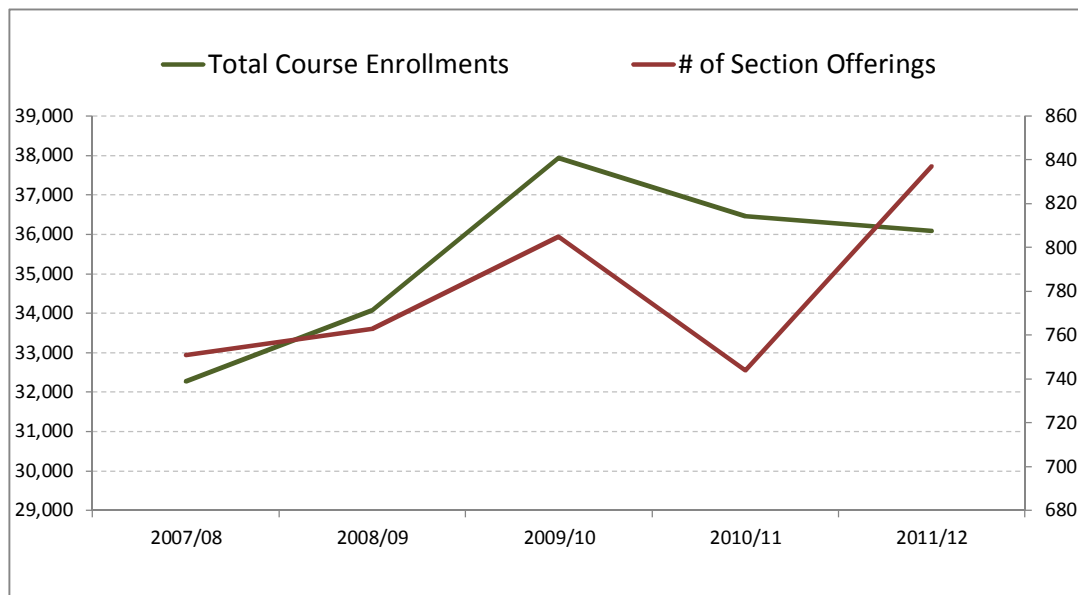


Program Review Data Packet - College Totals

Table 1. Enrollment Patterns & Course Offerings

College	Metric	Academic Year				
		2007/08	2008/09	2009/10	2010/11	2011/12
Cañada	Unique Headcount	10,459	10,773	11,644	11,215	10,965
	Total Course Enrollments	32,270	34,071	37,933	36,468	36,089
	# of Course Offerings	511	508	534	486	485
	# of Section Offerings	751	763	805	744	837
	Ave Enrollment per Section	43.0	44.7	47.1	49.0	43.1

Data Definitions: **Unique Headcount** is the count of individual students (no duplicates) enrolled at the college
Total Course Enrollments is the sum total of all courses students are taking in the Academic Year.
of Course Offerings is the number of courses offered by the college in that Academic Year.
of Section Offerings is the number of course sections offered by the college in that Academic Year.
Ave Enrollment per Section is the average number of students per section (Average Class Size).

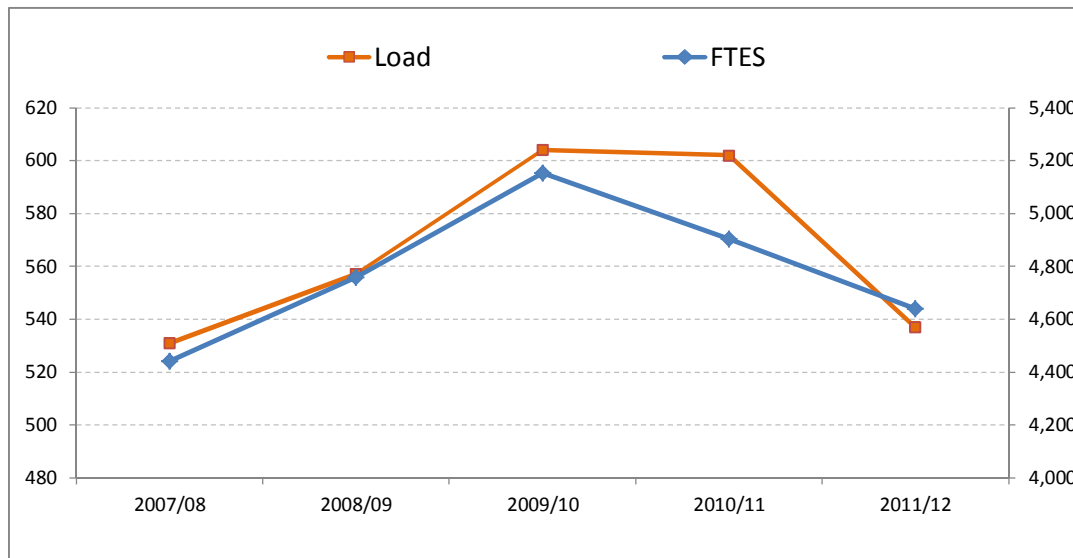


Program Review Data Packet - College Totals

Table 2. College Efficiency

College	Metric	Academic Year				
		2007/08	2008/09	2009/10	2010/11	2011/12
	WSCH	133,229	142,760	154,621	147,108	139,201
	FTES	4,441	4,759	5,154	4,904	4,640
	FTE	251.1	256.3	256.0	244.4	259.1
	Load	531	557	604	602	537

Data Definitions: **WSCH** is the total Weekly Student Contact Hours resulting from all enrollment at the college for that Academic Year.
FTES is the total Full Time Equivalent Student value resulting from all enrollment within the department.
FTE is the Full Time Equivalent faculty associated with the Department's course offerings for that Academic Year.
Load is the ratio of WSCH to FTE and a standard measure of department efficiency.



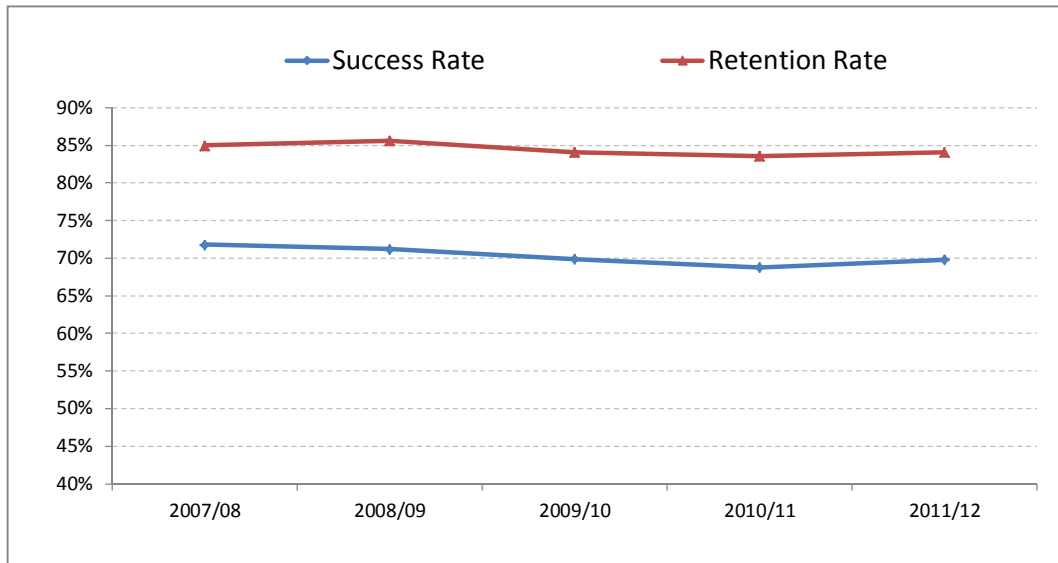
Program Review Data Packet - College Totals

Table 3. Student Performance Profile

College	Metric	Academic Year				
		2007/08	2008/09	2009/10	2010/11	2011/12
Cañada	Success Rate	72%	71%	70%	69%	70%
	Retention Rate	85%	86%	84%	84%	84%
	Pct A Grades Awarded	5.93	5.86	6.01	6.05	6.33
	Pct A or B Grades Awarded	4.39	4.31	4.4	4.41	4.52
	Pct Withdraws	2.44	2.22	2.09	2.16	2.17
	Retained Pass Rate*	2.75	2.72	2.57	2.6	2.59

Data Definitions: **Success Rate** is the percentage of students receiving a passing grade (A, B, C or CR) relative to all students receiving a grade.
Retention Rate is the percentage of students receiving any grade other than W relative to all students receiving a grade.
Pct A Grades Awarded is the percentage of students receiving a grade of A divided by all other grades awarded.
Pct A or B Grades Awarded is the percentage of students receiving either a grade of A or B divided by all other grades awarded.
Pct W Grades Awarded is the percentage of students receiving a grade of W divided by all other grades awarded (inverse of the Retention Rate).
***Retained Pass Rate** is the percentage of students receiving a passing grade (A, B, C or CR) relative to all students that didn't withdraw from the course.

Student Performance Profile

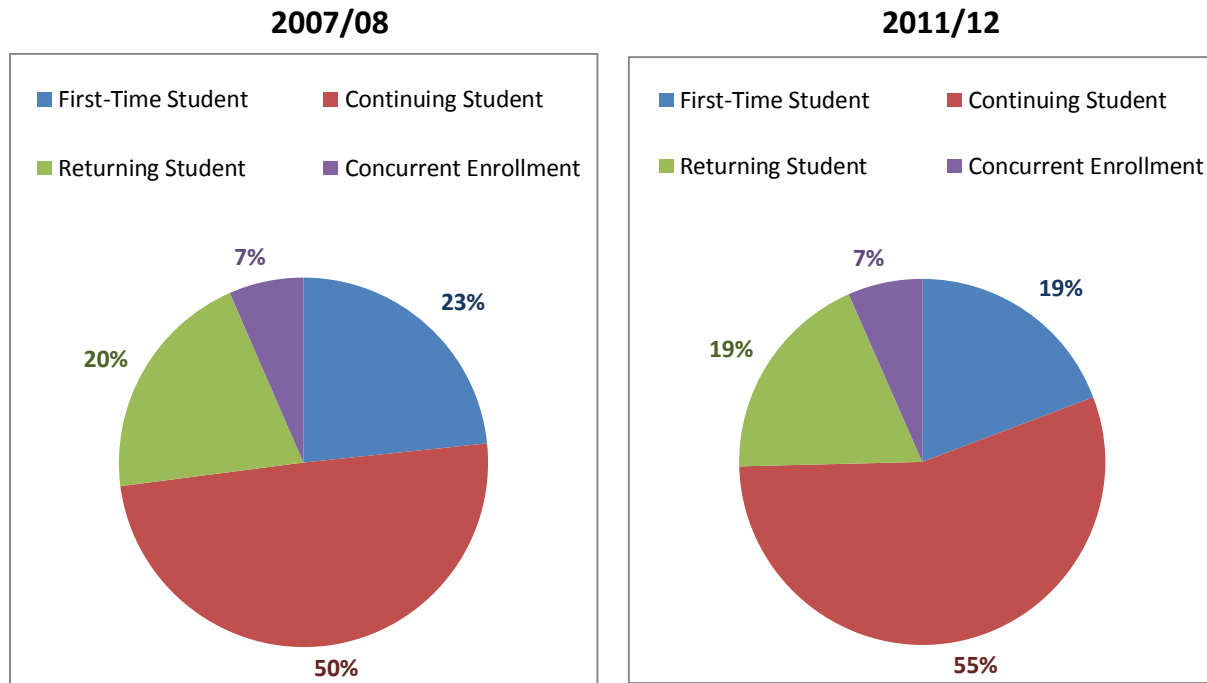


Program Review Data Packet - College Totals

Table 4. Student Enrollment Status Profile

College	Metric	Academic Year				
		2007/08	2008/09	2009/10	2010/11	2011/12
Cañada	First-Time Student	2,765	2,643	2,627	2,463	2,378
	Continuing Student	5,862	6,134	6,801	6,913	6,820
	Returning Student	2,425	2,414	2,597	2,369	2,315
	Concurrent Enrollment	777	956	996	761	813
	Percent First Time	26%	25%	23%	22%	22%
	Percent Continuing	56%	57%	58%	62%	62%
	Percent Returning	23%	22%	22%	21%	21%
	Percent Concurrent	7%	9%	9%	7%	7%

Data Definitions: **First Time Student** A student that has never attended this DISTRICT, but may have attended or may be currently attending another college.
Returning Student is returning to this DISTRICT and has not attended another institution since the last Academic Year here or is returning to this DISTRICT after attending another college.
Continuing Students are those that attended the DISTRICT in immediately previous primary Academic Year. Fall & Spring are primary Academic Years.
Concurrent Enrollment is a student that is attending high school during the Academic Year for which he/she is applying.



Program Review Data Packet - College Totals

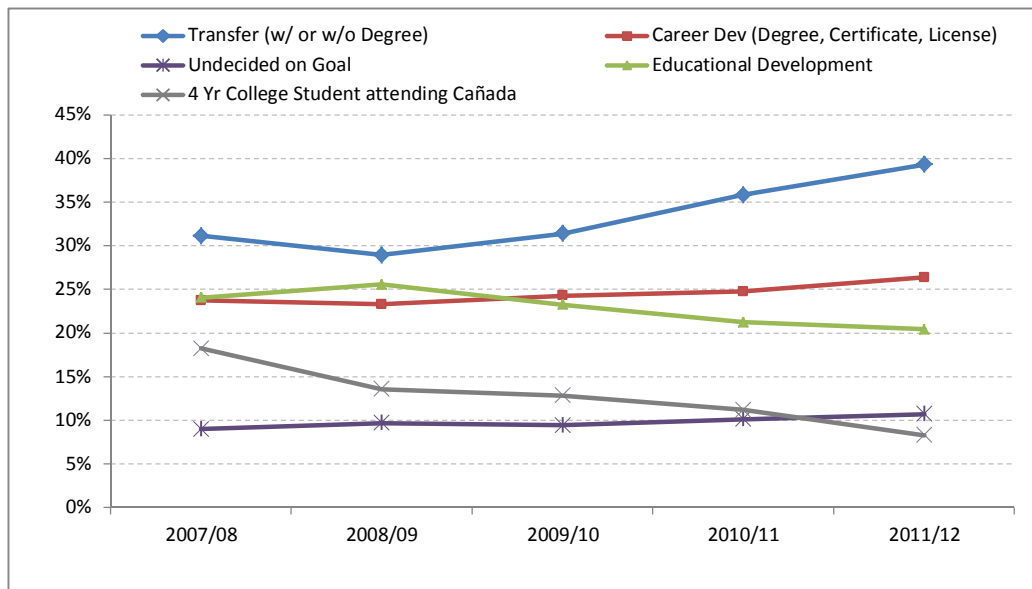
Table 5. Student Goal Orientation

College	Metric	Academic Year				
		2007/08	2008/09	2009/10	2010/11	2011/12
Cañada	Transfer (w/ or w/o Degree)	3,259	3,117	3,655	4,021	4,310
	Career Dev (Degree, Certificate, License)	2,484	2,512	2,829	2,778	2,894
	Educational Development	2,517	2,753	2,709	2,381	2,243
	4 Yr College Student attending Cañada	1,909	1,463	1,497	1,254	911
	Undecided on Goal	940	1,043	1,099	1,136	1,174
	% Transfer (w/ or w/o Degree)	31%	29%	31%	36%	39%
	% Career Dev (Degree, Certificate, License)	24%	23%	24%	25%	26%
	% Educational Development	24%	26%	23%	21%	20%
	% 4 Yr College Student attending Cañada	18%	14%	13%	11%	8%
	% Undecided on Goal	9%	10%	9%	10%	11%

Data Definitions: All counts & percentages reflect the student's primary educational goal as indicated on their first application.

Note 1: Percentages do not sum to 100% because the Transfer category is not mutually exclusive with Degree Orientation.

Note 2: Because of limited space only the first four categories are plotted below. Consider the patterns associated with the Undecided and Other categories when identifying and analyzing department trends.



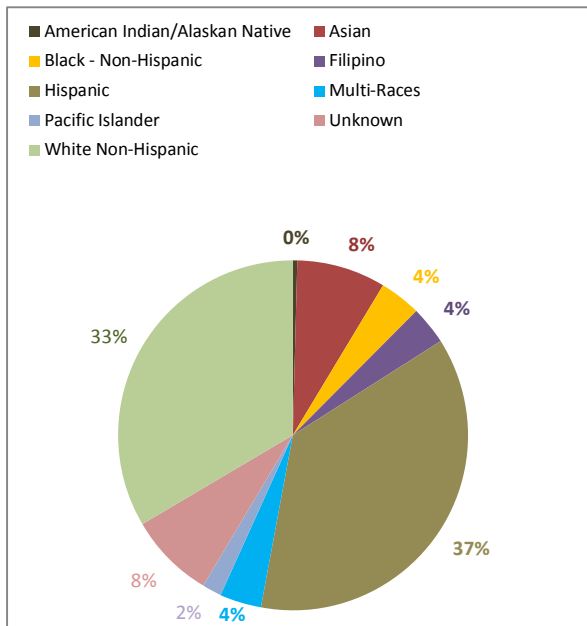
Program Review Data Packet - College Totals

Table 6. Student Demographics - Ethnicity

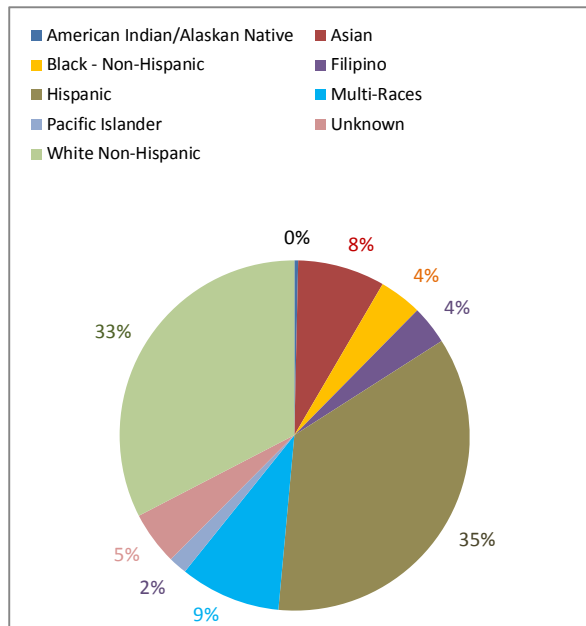
College	Metric	Academic Year				
		2007/08	2008/09	2009/10	2010/11	2011/12
Cañada	American Indian/Alaskan Native		42	42	34	34
	Asian		772	962	912	887
	Black - Non-Hispanic		370	449	469	432
	Filipino		404	411	421	393
	Hispanic		4,400	4,317	4,100	3,897
	Multi-Races		69	444	740	1,024
	Pacific Islander		182	207	191	187
	Unknown		1,066	930	708	537
	White Non-Hispanic		3,478	3,908	3,649	3,574
	% American Indian/Alaskan Native		0%	0%	0%	0%
	% Asian		7%	8%	8%	8%
	% Black - Non-Hispanic		3%	4%	4%	4%
	% Filipino		4%	4%	4%	4%
	% Hispanic		41%	37%	37%	36%
	% Multi-Races		1%	4%	7%	9%
	% Pacific Islander		2%	2%	2%	2%
	% Unknown		10%	8%	6%	5%
	% White Non-Hispanic		32%	34%	33%	33%

Data Definitions: Ethnicity category percentages may not sum to 100% due to nondisclosures.

2009/10



2011/12



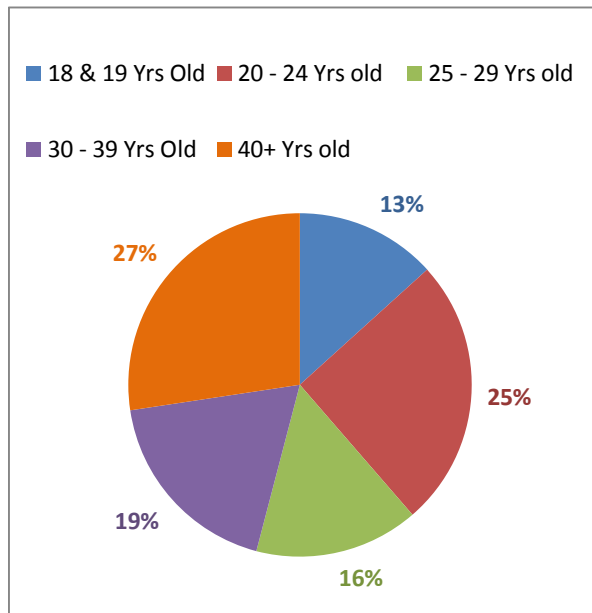
Program Review Data Packet - College Totals

Table 7. Student Demographics - Gender & Age

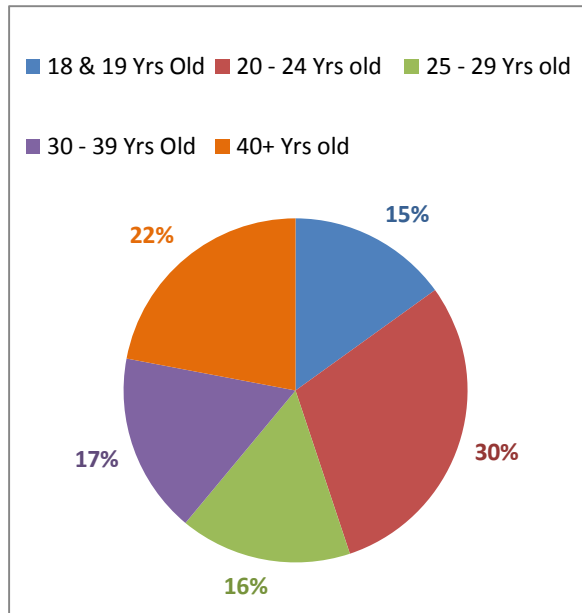
College	Metric	Academic Year				
		2007/08	2008/09	2009/10	2010/11	2011/12
Cañada	Female	6,542	6,785	7,335	7,046	6,793
	Male	3,605	3,717	4,037	3,894	3,933
	18 & 19 Yrs Old	1,343	1,471	1,636	1,622	1,604
	20 - 24 Yrs old	2,574	2,699	3,013	3,142	3,177
	25 - 29 Yrs old	1,573	1,654	1,784	1,732	1,719
	30 - 39 Yrs Old	1,875	1,903	1,956	1,912	1,808
	40+ Yrs old	2,778	2,601	2,751	2,536	2,341
	% Female	63%	63%	63%	63%	62%
	% Male	34%	35%	35%	35%	36%
	% 18 & 19 Yrs Old	13%	14%	14%	14%	15%
	% 20 - 24 Yrs old	25%	25%	26%	28%	29%
	% 25 - 29 Yrs old	15%	15%	15%	15%	16%
	% 30 - 39 Yrs Old	18%	18%	17%	17%	16%
	% 40+ Yrs old	27%	24%	24%	23%	21%

Data Definitions: Gender & Age category percentages may not sum to 100% due to nondisclosures.

2007/08



2011/12



Program Review Data Packet - College Totals

Table 8. Student Education Attainment Level

College	Metric	Academic Year				
		2007/08	2008/09	2009/10	2010/11	2011/12
Cañada	Concurrent Enrollment (K-12)	777	956	996	761	813
	No High School Degree	1,709	1,544	1,370	1,230	1,096
	High School Degree or Equiv	4,946	5,258	6,010	6,134	6,081
	Foreign Secondary Degree	506	507	543	553	615
	Post Secondary Degree	2,514	2,492	2,711	2,551	2,357
	% Concurrent Enrollment	7%	9%	9%	7%	7%
	% No High School Degree	16%	14%	12%	11%	10%
	% High School Degree or Equiv	47%	49%	52%	55%	55%
	% Foreign Secondary Degree	5%	5%	5%	5%	6%
% Post Secondary Degree	24%	23%	23%	23%	21%	

Data Definitions: All counts & percentages reflect the student's primary educational goal as indicated on their first application.

Note 1: Percentages do not sum to 100% because the Transfer category is not mutually exclusive with Degree Orientation.

