

**Minutes of the Regular Meeting of the Board of Trustees
San Mateo County Community College District
August 24, 2011, San Mateo, CA**

The meeting was called to order at 6:05 p.m.

Board Members Present: President Richard Holoher, Vice President-Clerk Dave Mandelkern, Trustees Helen Hausman, Patricia Miljanich and Karen Schwarz, Student Trustee Barry Jointer

Others Present: Chancellor Ron Galatolo, Executive Vice Chancellor Kathy Blackwood, Skyline College President Regina Stanback Stroud, College of San Mateo President Michael Claire, Cañada College President Jim Keller, District Academic Senate President Diana Bennett

Pledge of Allegiance

DISCUSSION OF THE ORDER OF THE AGENDA

President Holoher said there was a request to postpone the information item, "Student Participation in College Decision Making," to a future meeting. There were no objections from the Board.

MINUTES

It was moved by Trustee Miljanich and seconded by Trustee Hausman to approve the minutes of the study session of August 10, 2011. The motion carried, all members voting "Aye."

STATEMENTS FROM EXECUTIVES AND STUDENT REPRESENTATIVES

President Stanback Stroud said Skyline College had a successful opening week. She said Professor Pat Deamer received a Skyline Shines Award for her dedication and commitment to students and student success. Cherie Napier, Marketing Manager for Serramonte Shopping Center and leader of the Skyline President's Council, received the Community Skyline Shines Award. President Stanback Stroud said that her opening day address called on the College to pay attention to increasing the number of degrees and certificates granted, globalizing and internationalizing the campus, increasing student success, and accelerating the basic skills sequence.

President Claire said the College of San Mateo Athletic Hall of Fame event will take place on September 23. Among the inaugural class of inductees are recipients of Super Bowl rings and an Olympic gold medal winner. Opening week at the College was successful. The new College Center (Building 10) has become the hub of the campus and has brought energy to the campus that has not been seen for a long time. The student dining area is extremely popular and the flow works very well on the student services floor. President Claire said he has observed that the parking lots around the building are full of cars, even in the late afternoon, because of people using the facility.

President Keller said most of the opening day activities at Cañada College took place in the newly refurbished Building 5/6. The University Center has moved to that location and the building is full of activity. President Keller's written report focuses on the practical experiences provided to students who then go out and practice what they have learned. Examples include engineering students participating in NASA internships and the travel study opportunities for students in Anthropology.

Executive Vice Chancellor Blackwood said the books closed for the last fiscal year on August 6. She thanked Chief Financial Officer Raymond Chow and the Accounting staff as well as staff at the Colleges. Vice Chancellor Jing Luan is in China and, on his behalf, Executive Vice Chancellor Blackwood reported that the District Accreditation Coordinating Council has met. The Colleges are working on committees, chairs and timelines. Vice Chancellor Luan will report further in September. Executive Vice Chancellor Blackwood said the District transferred \$1.1 million to KCSM in the last fiscal year. Using updated numbers for the cost of sections, that amount would have provided approximately 120 sections for approximately 4,800 seats in classes. Executive Vice Chancellor Blackwood said the State has notified the District that it can increase the student health fee by \$1.00, effective with the summer term. Since a retroactive increase would cause confusion and would necessitate collection costs, the District will implement the health fee increase beginning with the spring 2012 term. Chancellor Galatolo noted that trigger mechanisms in the State budget may cause a student fee increase from \$36 to \$46 per unit and this could be done on a retroactive basis as well.

President Bennett said the Academic Senate has the following items on its agenda: provide an update on SB 1440 to the Board; review and finalize the plus/minus grading policy; review and update the hiring selection process; review and finalize the minimum qualifications policy; revisit the compressed calendar; address the implementation of the program review model for CurricuNet and the full implementation of CurricuNet at the Colleges in the fall; continue discussions with Community Education regarding the migration of discontinued programs; with AFT, select four faculty members to serve on the Performance Evaluation Review Committee; continue District meetings with the Vice Presidents of Instruction and Student Services; and continue to address budget issues.

President Bennett said she has heard from faculty members that this year's Districtwide opening day was one of the best in years.

STATEMENTS FROM THE PUBLIC ON NON-AGENDA ITEMS

Jerry Terstiege of Foster City said that KCSM-TV is the only independent public television station in the Bay Area and it provides quality newscasts and education to a wide constituency, with programming for adults and children. He said he understands the financial issues and the desire to serve students, but he submitted that there is a wider constituency to consider. He said that, if the station is sold, it will be gone forever and he said the Trustees should ask themselves if they want to be remembered for letting KCSM go.

Emily Kinner introduced herself as the Student Trustee of the Foothill-De Anza Community College District. She is also President of the California Association of Student Trustees and will be working with Student Trustee Jointer in that capacity.

NEW BUSINESS

APPROVAL OF PERSONNEL ACTIONS: CHANGES IN ASSIGNMENT, COMPENSATION, PLACEMENT, LEAVES, STAFF ALLOCATIONS AND CLASSIFICATION OF ACADEMIC AND CLASSIFIED PERSONNEL (11-8-1A)

It was moved by Trustee Miljanich and seconded by Trustee Hausman to approve the actions in Board Report No. 11-8-1A. Vice President Mandelkern noted that the recommendation includes the addition of two KCSM radio engineers. He said that, while it is not the job of the Board to micromanage the operation of programs, he would like to make sure that KCSM-FM does not face the same deficit situation as KCSM-TV. Vice Chancellor Harry Joel the two engineers were doing work for both KCSM-TV and KCSM-FM and the FM side needs the engineers to keep it running. President Holober said he shares the concerns that have been expressed. He said that the review process has not begun for KCSM-FM. He said that if the costs for radio are increased, the logical result is that it will start showing a greater deficit and would lead the Board to have discussions similar to those which have taken place regarding KCSM-TV. Student Trustee Jointer asked if the program review process for KCSM-FM is underway and if there is any indication that KCSM-FM will have to be scaled back. President Holober said the Board made a decision two years ago that KCSM-TV had two years to erase its deficit because State funding has been reduced dramatically. He said the Board has not started that discussion with regard to KCSM-FM but he believes it will occur. After this discussion, the motion carried, all members voting "Aye."

EXEMPT CLASSIFIED AND ACADEMIC SUPERVISORY SALARY SCHEDULE (11-8-2A)

It was moved by Trustee Hausman and seconded by Trustee Schwarz to approve the salary schedule as detailed in the report. Vice Chancellor Joel distributed copies of a summary of compensation increases and classification studies by unit and reviewed the information contained in the summary; a copy is attached to the minutes as Exhibit A. Vice Chancellor Joel noted that the District reviews the compensation of its collective bargaining groups on a regular basis as part of the negotiation process and the surveys are used as the basis for adjustments in the salary schedules for employees represented by AFT and CSEA. The District also reviewed the salary schedule of administrators and approved a new schedule in 2007. However, there is no record that the District has ever reviewed the compensation of the classified and academic supervisory group. Therefore, staff believed it was time to benchmark these positions to complete a review of compensation. The review also sought to determine whether or not many of these positions should be classified as exempt from overtime. As the survey was conducted, it was found that the District is one of only two of the Bay Ten community college districts which consider classified supervisory employees as non-exempt from overtime.

Vice Chancellor Joel said the survey was conducted in the spring of this year, using the Bay Ten to determine comparable compensation. The positions studied were Bookstore Manager, Director of Marketing, Communications and Public Relations, Accountant, Director of Financial Aid Services, Payroll Supervisor and Controller. Staff attempted to

benchmark the Director of Library Services and the Directors of DSPS and EOPS, but found no consistent structuring of the positions throughout the Bay Ten; therefore, staff used internal comparisons to rank these positions. To be consistent with the District's salary range review of employees represented by AFT and CSEA, staff determined that new salary ranges should rank within the top three or four of the comparison districts.

Vice Chancellor Joel said the District is recommending the creation of a new exempt supervisory salary schedule for bona fide positions which meet the exemption from overtime status. The salary schedule would adjust salaries of the positions stratified over nine salary ranges. The most cost-effective way to implement the recommendation would be to place each employee on the lowest step of the salary range that does not lower his or her pay. If this were accomplished effective September 1, 2011, the annualized cost would be approximately \$54,000. Vice Chancellor Joel said he believes this is a small price to pay to bring positions to where they should be; stop the collection overtime by employees who should be exempt; and place the positions in a competitive salary range.

Vice Chancellor Joel said that there is no record that the compensation of employees represented by AFSCME has ever been conducted and he intends to pursue a study of this group as well.

In response to several questions from Board members, Vice Chancellor Joel clarified the following points:

- The District provides Long Service Increments (LSIs), a percentage increase in salary, on top of base salary for years of service, from eight to 28 years, up to a maximum of 11.5%. If the new schedule is implemented, the affected positions would not receive LSIs or overtime compensation.
- There are 41 salary grades for positions represented by CSEA; this was increased from 39 following the 2004 Bay Ten survey. Within each grade, there are five steps which are based on seniority and which represent a different salary. Step increases occur even if there is no Cost of Living increase. After the last survey was conducted for CSEA employees, that group opted to not take an adjustment because to do so could have resulted in layoffs.
- Positions represented by AFT are placed in columns based on academic achievement. Within each column there are 23 salary steps. The results of the 2004 Bay Ten survey showed that the Masters + 60 column was low, while all other columns ranked within the top two or three of the comparison districts. As a result, there was a 1% adjustment for all employees on that column, costing \$166,000.
- The savings from exempt employees no longer claiming overtime compensation has been factored into the estimated \$54,000 cost to implement the new salary schedule.
- If the recommendation is approved, the increase to employees will vary depending on what the employee is currently earning and the movement to different steps (it is generally assumed that the cost of an employee's movement from one step to another runs approximately 1% per year Districtwide). In the first year, the impact is estimated to be approximately 2.7% and then will max out to 0.68%. This assumes that all employees stay with the District so that there are no savings from a new employee starting at Step 1.
- In the recommendation, the number of grades has been increased but there are currently no employees in two of the grades. Staff tried to create ranges that could accommodate changing times and new job creations. Maintaining natural increments between steps allows for placement of employees into those steps when the need arises. Other groups also have ranges which are not currently filled.
- There are 80 employees in the classified and academic supervisory group, split evenly between exempt and non-exempt. The positions studied were all exempt positions. The non-exempt positions will remain on the current schedule and need to be studied as well. President Holober clarified the guidelines for determining exemption. He said the District is not covered by State overtime laws but is covered by the Federal Fair Labor Standards Act. Under this Act, there are a few specific categories of employees who are exempt; with a few exceptions, they are managerial, administrative and professional. He pointed out that supervisory positions are not synonymous with managerial positions; therefore, an employee may be a supervisor and be non-exempt.
- The groups remaining to be studied are employees represented by AFSCME, the non-exempt classified supervisory employees and the very small group of confidential employees. Staff believes the positions represented by AFSCME are very competitive and that IT positions are not competitive within the industry but are competitive within the Bay Ten. Staff would like to conduct studies on a regular basis for all employee groups.

Charles Jones, First Vice President of CSEA, said CSEA members have expressed concern about the recommendation. He read a prepared statement outlining these concerns and stating that, while CSEA is not opposed to the change to comply with the Federal Fair Labor Standards Act and the need to create a new salary schedule for exempt

classified/academic supervisors, it questions whether this is the appropriate time to make a change and believes that further study and justification is needed. A copy of the CSEA statement is attached to the minutes as Exhibit B.

In response to an issue raised in CSEA's statement regarding anniversary step increases, Vice President Mandelkern asked if, assuming an implementation date of September 1, 2011, an employee whose anniversary date falls between September 1 and the end of the fiscal year would receive two increases during the fiscal year or would be granted an increase only once, either on September 1 or on his/her anniversary date. Vice Chancellor Joel said that when the District implemented the administrative schedule, it did not change anniversary dates and an employee could receive two increases. Vice President Mandelkern asked if it would be possible to make an adjustment so that employees receive only one increase. Executive Vice Chancellor Blackwood said that not all employees who are due a step increase this year will also receive a significant increase due to their placement on the new salary schedule; employees were placed on the lowest step of the salary schedule that would not lower their pay and some will receive only a couple of dollars. She said it is also important to note that these steps are only 3% apart, which is smaller than those on some of the other salary schedules.

Regarding overtime and proper classification of employees, President Holober said he trusts that staff carefully examined job duties and that employees who have been receiving overtime but will no longer be eligible have been properly classified under federal law. He said that good business practice dictates that employees who are eligible for overtime should not be able to self-assign overtime. He said that an exempt employee should make the decision about whether a non-exempt employee will receive overtime compensation and he hopes that, in the future, a line is drawn between those who receive overtime compensation and those who can make decisions about assigning overtime.

President Holober said it is difficult to determine the right thing to do given the economic times. He said he voted against the proposal of a few years ago to create new step increases for executive-level administrators because the State budget was deteriorating. He said he believes the District is still facing years of little or no increases in revenue from the State. The District has not been giving general wage increases, but has not made wage or benefits cuts and has not imposed furloughs or layoffs, with the exception of one executive-level employee. President Holober said he understands the importance of treating everyone fairly with a systematic review. However, he said this recommendation would result in a number of employees receiving wage increases of 25-30% or more and, while it would take four to five years to reach that level, it becomes hard for him to support when the District is saying no to everyone else. This is the issue he will consider when deciding what is the right thing to do.

Vice President Mandelkern said he is torn on this issue. He said he recognizes the need to make sure District employees have competitive wage packages so that valuable employees are not lost. He said the District made a mistake in the past when it stopped conducting regular comparisons and benchmarking. He said he sees merit in conducting regular reviews in order to maintain competitiveness, even in bad economic times. However, he shares President Holober's concerns as he sees no salary increases for other bargaining units and it appears that this will continue for some years to come. Vice President Mandelkern said his goal has always been to treat all employees fairly and equitably in a transparent manner and he is concerned about the appearance of effectively giving a salary increase to one group and not to others. He said certain employees have received an enormous amount of overtime compensation and he agrees with the objective to properly classify those employees who should be exempt. In summary, Vice President Mandelkern said there are some good things in the recommendation and some things about which he has concerns.

Trustee Schwarz said it is important to remember that all employees receive step increases until they reach the maximum step for their grade. She noted that a study has never before been done for this group. While there has not been a good time to implement a change and there will not be a good time in the near future, Trustee Schwarz said she would have a hard time telling this group that they will not be granted what the study confirmed they deserve. She believes this group of employees has waited long enough and she will support the recommendation.

Trustee Miljanich said she agrees completely with Trustee Schwarz's comments and she will support the recommendation.

Trustee Hausman said this study and recommendation took a tremendous amount of thought and work, with an attempt to be fair to all employees and to look ahead as well as analyze the present. She said that no one has a crystal ball when it comes to the economy but, considering the overall picture, she will support the recommendation.

After this discussion, the motion carried, with President Holober voting "No" and all other members voting "Aye."

RECOMMENDATION FOR ADMINISTRATOR EMPLOYMENT CONTRACT RENEWALS (11-8-3A)

It was moved by Trustee Miljanich and seconded by Trustee Hausman to approve the contract renewals as detailed in the report. Trustee Jointer noted that the KCSM General Manager's contract is recommended for renewal through June 30, 2013. He asked if this is for both KCSM-FM and KCSM-TV, meaning that there would still be a need for a General Manager if the television station is no longer owned by the District. Chancellor Galatolo said this is the case. The motion carried, all members voting "Aye."

APPROVAL OF CONSENT AGENDA

President Holober said the Consent Agenda consists of the following reports:

11-8-1CA	Ratification of May and June 2011 District Warrants
11-8-2CA	Renewal of Contract with Thomas F. Casey for Legal Services
11-8-3CA	Approval of Student Accidental Injury Insurance Program, 2011-12
11-8-4CA	Approval of Community College League of California (CCLC) and California Community College Athletic Association (CCCAA) Membership Dues, 2011-12

It was moved by Trustee Miljanich and seconded by Trustee Hausman to approve all items on the Consent Agenda. The motion carried, all members voting "Aye."

Other Recommendations

RECISION OF MAY 16, 2011 ADOPTION OF ADDENDUM TO INITIAL STUDY AND MITIGATED NEGATIVE DECLARATION FOR FACILITY IMPROVEMENTS AT COLLEGE OF SAN MATEO AND RECISION OF APPROVAL OF DEMOLITION OF THE BUILDING 20 COMPLEX AT CSM (11-8-101B)

It was moved by Trustee Schwarz and seconded by Trustee Miljanich to approve the rescisions as detailed in the report. Barbara Christensen, Director of Community/Government Relations, said that Friends of the College of San Mateo Gardens filed a lawsuit against the District alleging that the Addendum the Board adopted in May regarding the Building 20 Complex did not adequately evaluate the environmental impacts of the change in the Building 20 project from a remodeling project to a demolition project. Additionally, since May, the District has circulated an RFP for the work to be completed at the Building 20 Complex and now has additional details and specific information about the construction schedule, construction equipment, plant and tree transplants or replacements and number of parking spaces, etc. that are part of the project. As a result, the Administration is recommending that the Board rescind the May 16 adoption of the Addendum to the Initial Study and Mitigated Negative Declaration and also rescind the approval of the demolition of the Building 20 Complex at CSM. She said that in the next agenda item, the Board will be asked to consider a revised Addendum that analyzes the impacts of these more clearly defined elements of the project.

Shawn Kann, a student at CSM, presented a letter from attorney Susan Brandt-Hawley which is attached to the minutes as Exhibit C. Mr. Kann said he believes this area contains a healthy variety of plants and is the only remaining green space on campus with any habitat value. He said that other landscaped areas on campus have been graded and the soil structure disturbed, and it would take years to regenerate the soils that are present in this green space. He explained what the area means to him and others, stating that it is a space where people can pray, meditate, gather and rest. Mr. Kann said the gardens and Building 20 Complex date back to 1963 when the campus was constructed. He said there is value to the space in terms of the history of the College but did not offer specifics. He said the addition of Building 10 created an issue with traffic and that is why a new parking lot is being recommended. He said there may be other alternatives that would offset the need to remove the green space and said these issues should be explored before the project is approved.

Lucy Tolmach, Director of Horticulture at Filoli, said she does not believe the proper planning process and environmental impact studies for the demolition of the Building 20 Complex have been done. She said that, as a 50-year-old structure, it is part of the history of the campus as a vernacular landscape developed for teaching and training in horticulture. San Mateo County had a thriving greenhouse industry and families needed a place to train their employees and their children who would take over the businesses. She said the space evolved over time and is still relevant today. She urged the Board to take the time to prepare an Environmental Impact Report (EIR) and to consider the views of students and members of the public through a public environmental review process. Ms. Tolmach submitted a copy of a letter she emailed to the Board, which is attached to the minutes as Exhibit D.

The motion to (1) rescind the May 16, 2011 adoption of the Addendum to the Initial Study and Mitigated Negative Declaration for facility improvements at College of San Mateo, and (2) rescind the approval of the demolition of the

Building 20 Complex at College of San Mateo carried, all regular Board members voting “Aye.” Student Trustee Jinter cast an advisory “No” vote.

ADOPTION OF REVISED ADDENDUM TO INITIAL STUDY AND MITIGATED NEGATIVE DECLARATION FOR FACILITY IMPROVEMENTS AT COLLEGE OF SAN MATEO AND APPROVAL OF DEMOLITION OF THE BUILDING 20 COMPLEX AT CSM (11-8-102B)

It was moved by Trustee Miljanich and seconded by Trustee Hausman to adopt the revised Addendum and approve the demolition of the Building 20 Complex at CSM.

Ms. Christensen said that the California Environmental Quality Act (CEQA) requires that, when a Negative Declaration has been adopted for a project and the project is changed from what was originally studied in the Initial Study, a new study is required under CEQA to determine if there are any new or substantially more severe adverse impacts on the environment than those identified in the original study. In 2006/07, the District completed the required CEQA analysis of the CSM CIP2 project which included:

- Renovation of 10 buildings
- Demolition of 14 buildings
- Construction of two new buildings – the College Center and Building 5
- Reconstruction of two swimming pools
- Renovation of parking lots, pedestrian pathways and plazas
- Main entrance enhancement and new traffic roundabout
- Internal roadway resurfacing and enhancement

The Initial Study on the CIP2 project identified potential significant impacts on the environment but found that all of those impacts could be avoided or reduced to less-than-significant and, therefore, a mitigated negative declaration was the appropriate document to adopt under CEQA.

Ms. Christensen said that in 2006, the District planned to renovate Building 20 and now the District plans to demolish the Building 20 Complex because it is in great disrepair, non-ADA compliant and contains hazardous materials. In addition, the one classroom located there is not needed because the College has added more than 40,000 square feet of new classrooms and offices. Also, the Horticulture program has been on hiatus for two years and the Board recently acted to discontinue the Horticulture and Floristry programs at the end of the 2011-12 academic year, due to declining enrollment and other issues that were thoroughly discussed on July 27, 2011 in Board Report 11-7-1B, when the Board took action to discontinue the programs. The revised project plan is to demolish Building 20, the greenhouse and the lath house; construct 180-200 parking spaces (there are currently 40 parking spaces on site); retain and rehabilitate approximately 80% of the North Garden Area, the dawn redwood tree and some surrounding lawn area; and establish a mini ecosystems teaching garden designed by faculty in the slopes surrounding the lot. In addition, if faculty request and can establish a continued need for a teaching garden for use in instruction, the demonstration garden will be relocated from the South Garden area to an area near Building 36 (which is adjacent to the Building 20 site). Ms. Christensen added that any need for the continuing instructional use of the gardens has been accommodated by the offer to relocate or replant a majority of the plants in the South Garden to another area.

Ms. Christensen said that this small change in the overall project studied in 2006/07 required another review pursuant to CEQA to inquire whether there are any new or more severe impacts. She said the analysis concluded that there are no such impacts; the analysis is provided in the revised Addendum. Overall, the document finds that the loss of some of the garden space as part of the Building 20 Complex demolition, and its replacement with parking, would amount to only approximately one-third of one percent of all of the open space or landscaped space on campus. Ms. Christensen said the project change is considered a minor change to the CSM CIP2 project under CEQA for two reasons: (1) there is a minor amount of landscaping loss involved, and (2) the 2006/07 Initial Study indicated that Buildings 15 and 17, representing 30,000 to 40,000 square feet of space, were to be demolished but were remodeled instead because the design-build team later advised that rehabilitation of the buildings would be more cost-effective. Given that the Building 20 Complex buildings are much smaller than Buildings 15 and 17, the recommendation to demolish the Complex represents a net reduction in demolition materials and is a minor change in the context of the entire CIP2 project. The finding is that there is not a new or more severe impact than previously analyzed and disclosed in the 2006/07 Initial Study/Mitigated Negative Declaration for the CIP2 project.

Ms. Christensen gave a PowerPoint presentation of the Building 20 Complex as it exists, along with diagrams of proposed changes and a description of the ecosystem zones and a list of the plant specimens to be included; the presentation is attached to the minutes as Exhibit E. During the presentation, Ms. Christensen said that, using Tables 1 and 2 in the Addendum, the landscape loss is calculated as 18.67% of the site and only .03% of the total landscaped/open area space on campus.

Ms. Christensen introduced Rich Walter, Principal/Project Manager from ICF International, the firm that completed the original Initial Study/Mitigated Negative Declaration and the Addendum. Mr. Walter said that, subsequent to approval of the Addendum on May 16, ICF looked at each of the concerns raised in the ensuing complaint to see if improvements and/or clarifications could be made to the Addendum. He added that, as Ms. Christensen said, more details are known about the project itself so that concerns can be addressed more explicitly in the revised Addendum. ICF has added studies, analyses and comments on the project details in the areas of aesthetics, recreation, land use, hydrology and water quality, biological resources, cultural resources, parking, and cumulative impacts.

Mr. Walter said that when there is a change in a project, CEQA requires consideration of whether the impacts are substantially more severe than disclosed in the prior document or whether there is a new significant impact. In reviewing the issues that were raised, ICF did not find that the fundamental conclusion of the Addendum changed; the conclusion was that there were no new significant impacts arising from the change in the project in terms of the demolition of the Building 20 Complex compared with what was disclosed in the 2006 document. Mr. Walter said it is important to note that when considering this project, the Board is considering both the original Initial Study/Mitigated Negative Declaration and the Addendum.

Mr. Walter addressed some points raised in the letter submitted by Ms. Tolmach. He said that in 2006, ICF did research on how the entire campus area, including the Building 20 Complex, would be affected by the Facilities Master Plan. When considering the issue of cultural resources, ICF researched the Information Center at Sonoma State University which houses all cultural resource information, the California and national Registers of Historic Places, and local historic societies. They did not find any listing of prior resources that might be found at this location. In addition, when considering the eligibility of a building for historic status, CEQA requires consideration of whether it is associated with significant events or people in California. To date, ICF has not found any evidence of this kind of association. The Building 20 Complex is less than 50 years old, which is the typical starting point for any assumption that a building may be eligible for historic status. Architecture is also examined to see if it is unique or shows evidence of groundbreaking techniques; nothing of that nature was found in terms of the greenhouse, lath house or Building 20 itself.

Liane Benedict read a prepared statement by Donna Bischoff in opposition to the lack of a full EIR. Ms. Bischoff's statement also disputed that parking is needed where the gardens now stand. A copy of Ms. Bischoff's statement and accompanying photos of CSM parking lots are attached to the minutes as Exhibit F.

Student Trustee Jointer asked how many of the new parking spaces would be allocated to staff. President Claire said parking capacities are always fluid and change according to need. He said that there is high demand for student parking close to campus and the Hillsdale lot is one mile from the core of the campus. He added that the goal is always to get students as close to campus as possible while allowing adequate parking for staff.

Beth Covey, a student in the Floral Department at CSM, said the impervious surface shown by Ms. Christensen in a diagram does not include a beautiful courtyard in the middle of Building 20. She said that the flowers that are already in the area should be kept and rehabilitated rather than spending money on something new. She said this is a beautiful, mature and peaceful area for students to use and the entire space is needed.

Emily Kinner, Student Trustee at the Foothill-DeAnza Community College District, asked if the replacement plants would be cost-effective and sustainable. Trustee Miljanich suggested that this be addressed during Board discussion.

Maxine Turner said she is a resident of San Mateo, a board member of the San Mateo Arboretum Society and a former Planning Commissioner. She said she was surprised to hear of the removal of the Horticulture program and the recommendation to demolish facilities. She has supported the District's two previous bond measures. She said that one of the reasons CEQA was passed by the legislature was to allow the public to be fully informed about what public officials are doing and to provide the opportunity to give timely feedback and input to decision makers. The fact that the Addendum was not sent out for public review adds to the distrust people have of public agencies. Ms. Turner said she was stunned to see that some CSM buildings she considered historic have been demolished and replaced by new, large

construction that she believes is not identified in bond language. She said that the project change probably merits doing an EIR and certainly should be made widely available to the public.

Juanita Celaya, a 28-year CSM employee, said she uses the gardens regularly and believes they should not be replaced with a parking lot. She said 300+ parking spaces will be added at the north end of campus and will be more than adequate to meet parking needs.

Tricia Gardner, a student at CSM, said that students tried hard to work with the Board and College president, but their comments, along with those of the public, have not been taken into consideration. She said it is important to consider the opinions of teachers, students and the public. She said shared governance has not been used well, and she hopes that, in the future, information will be better distributed to the public. She believes it is important to keep the garden areas intact as much as possible.

In response to the public comments, Ms. Christensen said a thorough analysis of parking spaces on campus was completed and is included in the Addendum. The parking study shows a student headcount of 10,598 in spring of 2011. This is one of the lowest student populations in the last 20 years and is due to budget cuts and lack of funding. Over the last 20 years, the student headcount ranged from 12,000 to 15,000. The District must plan parking to accommodate the more historic numbers because the parking spaces and buildings need to serve generations of students. Ms. Christensen said the North Gateways parking was considered as part of the parking plan and will not provide 300 additional spaces.

Regarding sustainability, Ms. Christensen said the revised plan calls for a teaching garden and faculty have identified the plants they need for their instructional programs, which will be incorporated into the area.

Ms. Christensen said the District has also considered the cost of rehabilitating the building; the cost would be in the millions of dollars to rehabilitate a building that does not have a program to serve. Ms. Christensen observed that rehabilitating the building would not be a wise use of public resources.

Student Trustee Jinter said he agrees that the Building 20 Complex does not fit in with the rest of the campus and should not remain the way it is. However, he said he is concerned that the process that should take place regarding matters that affect students has not been followed. He said students were not part of the decision-making process and were the only constituency that was not consulted. Vice President Mandelkern said he believes student input has shaped this project. He said that what is being proposed now in terms of the dawn redwood and south garden areas is substantially different than the original proposal as a direct result of input from students. Vice President Mandelkern said the assertion that this is being considered suddenly, with three days notice, is not true; it has been discussed at many Board meetings over many months, with public comments.

Vice President Mandelkern reviewed photographs shown by Ms. Christensen earlier and noted that, if the project is approved, there will be a net loss of a little more than 13,500 square feet. Ms. Christensen provided the correct number from Tables 1 and 2: 10,000 square feet of garden will be lost. Additional trees and green space will be added around some boundaries and the boundaries of the North Garden area will be minimally altered.

Vice President Mandelkern asked for clarification of the term “historic vernacular landscape” used in the letter from Ms. Tolmach. Mr. Walter said the term is used in the National Environmental Protection Act which deals with historic and cultural resources in general. There are parallels with the California Environmental Quality Act but there are also many notable differences. The CSM project is a State project and the national statute is not applicable. Under CEQA, there is no reference to “historic vernacular landscape” in the guidelines for a cultural landscape. There are specific instructions about what a cultural resource is and there is some latitude on the part of the lead agency to make determinations.

Vice President Mandelkern said that when the Board last considered the Addendum, he asked how aesthetics were considered, and he asked if anything has changed in that regard in the revised Addendum. Mr. Walter said the discussion was expanded in the revised Addendum to include scenic vistas, scenic roadways and scenic areas in general. In terms of scenic vistas, the proposed change opens up more scenic views. ICF also looked at aesthetic landscape features such as planted gardens and lawn spaces. There are approximately 86 acres of landscaped areas on the campus and, while this area is somewhat different because it has been used as a teaching garden, they did not find that the changes rose to a significant level.

Vice President Mandelkern asked why the Addendum is an appropriate document rather than a new EIR. Mr. Walter said the standard for preparing an EIR is the belief that there is a potential negative impact that cannot be clearly mitigated. When the original Initial Study/Mitigated Negative Declaration was completed, ICF found some impacts such as air quality during construction and water quality in terms of dealing with new impervious spaces, and mitigations were identified. In the Addendum, ICF looked at every subject area required by CEQA, what was disclosed in the original document, and what the nature of any new impacts would be. There have been some significant changes in the CIP2 CSM project from what was studied in 2007, such as Buildings 15 and 17 not being demolished and the Building 20 Complex being demolished rather than remodeled. There will be more impervious surfaces that would be introduced with parking; however, a potentially significant impact for water quality due to runoff from parking spaces was already identified in the Initial Study/Mitigated Negative Declaration and the District was triggered into the County-wide storm water reduction program. Mr. Walter said that, although some changes were found in key areas, ICF did not find any significant impact that could not be addressed by the mitigation that was in the original document. An EIR would be needed if there was evidence of impacts that could not be mitigated or if there is question about the mitigation in terms of its effectiveness.

Student Trustee Jointer said that District policy requires that students be included in decision making in areas that pertain to their interests. He said formal student representatives, i.e. Associated Students, need to be involved when recommendations are being formed. He asked how long one constituency will be ignored.

Trustee Schwarz said she is concerned about Student Trustee Jointer's comments and does not know where the breakdown is occurring; she hopes that "Student Participation in College Decision Making" will be put back on the agenda soon. She noted that students did come forward to make comments at many meetings and, as a result, an adjustment was made to retain 80% of the garden. She complimented the District for conversing with students and the public and listening to suggestions but said she is hearing that some students want things left as they are without any adjustments. She said the conversations need to be a two-way street but she feels she is going down a one-way road. Trustee Schwarz said she supports approval of the revised Addendum.

Trustee Miljanich agreed that the topic of student participation should come back for discussion and said she appreciates hearing from the student trustee. She pointed out that hearing someone and agreeing with him/her is not necessarily the same thing. She said it is untenable to think of putting any constituency on campus in Building 20 given the dilapidated nature of the building compared to the rest of the campus. Trustee Miljanich said she knows she listens and she believes all other Board members listen as well. She said she is prepared to vote on the motion to approve the revised Addendum.

Trustee Hausman said the Board has spent considerable time on this subject and has received much student input at meetings and through emails. She said that the Board has the responsibility to make a decision and it is not an easy one. She said the Board does not make decisions casually, but studies the issues and listens to all constituents' input. Trustee Hausman said that the Board's decisions will not please everyone, but the Board must go ahead as best it can.

President Holober said that the revised Addendum provides more specificity than the previously approved Addendum concerning landscaping by providing a list of habitats and plants. He asked if this could be an item subject to attack in terms of native and non-native species, etc. Mr. Walter said the current garden is a mixture of native and non-native species; for example, the dawn redwood tree is not native. He said that planting non-native species is very common and is not an issue. He said there are some non-native species that are invasive but they are well-controlled.

Regarding the discussion about whether an EIR should be conducted, President Holober said the Board is acting on the legal advice that this item does not require an EIR. He said this question is part of the pending lawsuit and the court will make a decision.

The Board voted on the first part of the motion, to adopt the revised Addendum to the 2006 Initial Study/Mitigated Negative Declaration, which carried, all regular members voting "Aye." Student Trustee Jointer cast an advisory "No" vote.

The Board then voted on the second part of the motion, to approve the demolition of the Building 20 Complex as detailed in the report, which carried, all regular members voting "Aye." Student Trustee Jointer cast an advisory "No" vote.

ACCEPTANCE OF UNITED WAY OF THE BAY AREA AND FRANKLIN TEMPLETON FUNDING TO SPARKPOINT SKYLINE COLLEGE FOR FINANCIAL EDUCATION (11-8-103B)

It was moved by Trustee Schwarz and seconded by Trustee Hausman to approve the funding as detailed in the report. The motion carried, all members voting "Aye."

STATEMENTS FROM BOARD MEMBERS

Student Trustee Jointer welcomed two visiting Student Trustees: Emily Kinner from Foothill-De Anza and Jeffrey Fang from San Francisco City College. Student Trustee Jointer attended the Student Trustee Workshop last week and said it was very informative. He also attended meetings of the Associated Students at College of San Mateo and Cañada College. The California Community College Association of Student Trustees held its first meeting of the year and Student Trustee Jointer was installed as Vice President. The Association took a position of support for Assembly Bill 844 dealing with student eligibility to serve in student government positions.

Trustee Schwarz thanked Skyline College for hosting the Opening Day event last week and said it was the best she has ever attended. She said the speakers were motivational and noted that the audience was very engaged. Trustee Schwarz was invited by President Claire and Louise Piper, and was pleased to attend, a get-together sponsored by the Sequoia Healthcare District, which approved a grant for the Child Development Center at College of San Mateo.

Trustee Hausman said the Opening Day event was outstanding, with dynamic speakers and enthusiastic participation from the audience. She thanked Skyline College for hosting the event.

Vice President Mandelkern said he shares Trustee Schwarz's hope that the item on student participation in college decision making will be on the agenda in the near future. He said he is concerned about a potential breakdown in communication. He pointed out that it is also the responsibility of the Associated Students at each College to be aware of what is on the agenda for Board meetings and to raise any concerns they have rather than sitting back and waiting to be consulted.

Vice President Mandelkern said the issue of the District's investment policy and funds has been discussed numerous times. He wanted to bring to the attention of District administration that about a week ago, Standard & Poor's downgraded their rating on the County of San Mateo's pool investment fund. The response of the County Treasurer was to fire Standard & Poor's as a rating agency for the County. Vice President Mandelkern said that, speaking personally as a Board member, this is not the response he would have hoped for.

President Holober said he talked with San Mateo Mayor Jack Matthews at a Chamber of Commerce event. Mayor Matthews expressed interest in meeting with one or two Board members along with one or two San Mateo City Council members to discuss relations between the City and the District. President Holober said key administrators would also be included. He asked if any Board members were interested in participating; Trustee Schwarz, Vice President Mandelkern and Student Trustee Jointer responded affirmatively. President Holober said that the number of Board members participating must not constitute a quorum in order to comply with the Brown Act. Chancellor Galatolo said staff will help coordinate the meeting, beginning with potential dates suggested by Mayor Matthews. Vice President Mandelkern said that the Board has held joint meetings with city councils in the past and might want to consider doing so again.

COMMUNICATIONS

President Holober said that, in addition to the correspondence submitted at this meeting, the Board received two emails regarding KCSM-TV and one email regarding the Board's decision process.

RECESS TO CLOSED SESSION

President Holober said that during Closed Session, the Board will (1) consider the personnel items listed as 1A and 1B on the printed agenda, (2) hold a conference with labor negotiator Harry Joel; the employee organizations are AFT, AFSCME and CSEA, and (3) hold a conference with legal counsel regarding two cases of existing litigation as listed on the printed agenda.

The Board recessed to Closed Session at 8:47 p.m. and reconvened to Open Session at 9:00 p.m.

CLOSED SESSION ACTIONS TAKEN

President Holoher reported that, during the Closed Session just concluded, the Board considered the personnel items on the printed agenda and voted 5-0 to approved the actions listed as 1-A and 1-B. The conference with legal counsel was canceled.

ADJOURNMENT

It was moved by Trustee Schwarz and seconded by Trustee Hausman to adjourn the meeting. The motion carried, all members voting "Aye." The meeting was adjourned at 9:03 p.m.

Submitted by

Ron Galatolo, Secretary

Approved and entered into the proceedings of the September 7, 2011 meeting.

Dave Mandelkern, Vice President-Clerk

Listing of Compensation Increases and Classification Studies by Unit
8/24/2011

AFT	Last Compensation Increase	2007/08 & 2008/09	Agreed to State COLA; 4.53% in 2007/08, 0% in 2008/09
	Last Classification Study	2007/08 and 2004-05	- In 2004-05 cost of increase was \$166,323; no change in 2007-08
AFSCME	Last Compensation Increase	2007/08 & 2008/09	Agreed to 4% per year
	Last Classification Study		None
CSEA	Last Compensation Increase	2007/08 & 2008/09	Agreed to State COLA; 4.53% in 2007/08, rec'd "me-too" in 2008/09 for 4%
	Last Classification Study	2004/05 & 2011/12	2004-05 Increased LSI and salary grade max from 37 to 41 - \$89,900; New survey - 2011-12
CPSG	Last Compensation Increase	2007/08 - 4.5%	none for 2008/09
	Last Classification Study		For Board approval on 8/24/11 - See combined cost with AS below
ACAD SUPS	Last Compensation Increase	2007/08	4.5%; none for 2008/09
	Last Classification Study		For Board approval on 8/24/11 - Cost combined CPSG and AS Salary Schedule - \$54,000
ADMINIST	Last Compensation Increase	2007/08	4.5%; none for 2008/09
	Last Classification Study	2007/08	Cost of increase was \$216,000

August 24, 2011

TO: Board of Trustees

FROM: California School Employees Association (CSEA)
Chapter 33

With the District still in the midst of a severe budget crisis and anticipated mid-year cuts to Community Colleges, CSEA Chapter 33 has major concerns regarding Board Report No. 11-8-2A. We would like to clarify statements made about this agenda item.

Exempt Classified and Academic Supervisory Salary Schedule

“Background statement Board Report 11-8-2A: Every four years the District completes a salary survey of CSEA represented benchmark positions that are jointly agreed upon between CSEA and the District. The District has not, however, engaged in a regular review of the classified and academic supervisory compensation”.

While classified non-represented positions might not have been surveyed on a regular basis, each time the District performed a salary survey for the CSEA bargaining unit positions that required adjustments, the appropriate non-represented classifications also received those adjustments. This assured that the non-represented employees would always remain at a higher salary level than the CSEA unit. This is clearly understood and warranted by CSEA.

Prior to the recent revisions made within District Rules & Regulations with regards to non-represented employees, they also received the same salary increase, benefit increases as well as longevity service increases (LSI).

CSEA is not opposed to this proposed change to now comply with Federal Labor Standards Act (FLSA) and the need to create a new salary schedule for exempt classified/academic supervisors, however, CSEA Classified employees are the largest unit impacted by this budget crisis and we question whether this is the appropriate time to make this change, and we believe there remain many unanswered questions and feel that further study and justification should be given.

1. Is the justification for the nine steps due to the fact that this unit will no longer be entitled to LSI? (CSEA is capped out at 5 steps)
2. While the District states that the annualized cost is approximately \$54,000 – we believe the actual initial costs to be much higher. What formula was used to arrive at this figure, and over how many years was the total dollar amount averaged? Because of the

immediate and severe budget crisis, cost per year over the next five years needs to be clearly stated. Were anniversary step increases included in this annualized amount?

- a. Example: If the new Exempt salary schedule is implemented on September 1, 2011, all affected employees will receive a salary increase. Will an employee whose anniversary date falls between September 2, 2011 and June 30, 2012 forego their automatic anniversary step increase? Or will the anniversary date be honored, thus giving the employee 2 salary increases in the 2011-12 fiscal year?
3. CSEA has also made numerous requests for a salary step adjustment to our salary schedule, especially given the fact that all vacant positions have been budgeted at a step 3 for many years, but we are always told, this must come out of our total compensation.
4. CSEA has always had to sacrifice increases that could have been applied to our salary schedule in order to achieve the increases to our LSI, medical cap and vacation.
5. Around 2005-2006 contract negotiations we were told the Board wanted parity. The District brought all other units to the same medical cap and LSI level which would bring them on par with CSEA. These are items the CSEA not only had to negotiate for, but also took less on our salary schedule, while this increase was at NO cost to the other units. This was a major loss for CSEA given the number of years this covered.
6. There are employee classifications within the supervisor unit that do not meet the FLSA and Government code standards required for supervisory employees. They fall under the government code section as "Classified" position and therefore need to be moved over into the CSEA Classified unit.

The biggest question that needs to be answered: How does the District justify these increases at this time when we are constantly told we are in a severe budget crisis and current projections from the State looks as if we will be facing mid-year cuts?

BRANDT-HAWLEY LAW GROUP
Environment/Preservation

Susan Brandt-Hawley

Chauvet House PO Box 1659
Glen Ellen, California 95442

Legal Assistant
Jeanie Stapleton

August 24, 2011

Board of Trustees
San Mateo County Community College District

via email *trustees@smccd.edu*

Subject: Building 20, Greenhouse, and Gardens

Dear President Holober and Trustees:

On behalf of the group Friends of the College of San Mateo Gardens, I am again writing to urge this Board not to approve the demolition of Building 20 and the adjacent greenhouse and gardens to make way for a parking lot. I previously wrote to you in May 2011 requesting that the District prepare and certify an environmental impact report that considers impacts and alternatives. That letter is incorporated here by reference. As then explained, the College of San Mateo has a well-documented, longstanding intention to retain Building 20 and its gardens. This new demolition project is outside the scope of its 2006 Facilities Master Plan and cannot be approved based on an "addendum" that is intended only for minor, technical changes to an existing project.

As you know, you did not agree to my request for an EIR, and I filed a lawsuit on behalf of Friends for your violation of CEQA. The proposed action before you essentially concedes the merit of that lawsuit, which is sincerely appreciated. However, while correcting your prior unlawful action is a good thing,

Letter to Board of Trustees
August 24, 2011
Page 2

approval of the proposed new project before you based on the new addendum would be a new legal error. All of the fundamental problems that we raised in the lawsuit are still present: the addendum is not appropriate for this new project that would demolish the Building 20 complex, including most of the South Garden, for an unstudied parking project. *This is not a minor change to the Master Facilities Plan, it is a new project.*

Also, the timing of this agenda item is very troubling. As you know, for the past couple of months the Friends and the District have been exchanging settlement proposals to resolve our CEQA lawsuit, and the demolition project has been on hold. The Friends' counter-counter-proposal to the District was dated July 29th. My clients and I have been waiting for your response. Instead, without any disclosure or warning to us, your staff has been working to prepare a new addendum and new project proposal. We did not get word of this until late last week and did not receive this lengthy document until just before 5 pm last Friday August 19th. I asked your attorney Sabrina Teller to request that this item be deferred to your next calendar to allow a reasonable time for the concerned students and community members to respond. I again make this request. Allowing 3 days to respond does not allow a good faith process.

The Record. All public comments and documents relating to the previous iteration of this project, and also the pleadings in the Friends' lawsuit, are incorporated by reference into the record, including the arguments relating to segmentation and piecemealing.

Historic Status. The 2006 Facilities Master Plan proposed retention of Building 20 and its greenhouse and garden, not their demolition. For this new

Letter to Board of Trustees
August 24, 2011
Page 3

demolition project, an EIR must be prepared because there is a “fair argument” before this Board that there *may* be significant environmental impacts of the new project. Evidence to the contrary is irrelevant. Analysis of the proper level of review must begin with consideration of the environmental setting. The initial addendum failed to do so and the revised addendum is similarly inadequate.

The addendum discards the claim that the Building 20 complex is an historic landscape, stating that CEQA does not encompass such landscapes. Yet as others have explained, there is substantial evidence that the Building 20 complex, including the gardens, the greenhouses, and Building 20 and its classrooms and courtyard, may be an historic vernacular landscape or historic designed landscape eligible for listing on the California Register of Historical Resources. The complex has served as an important instructional teaching garden and classroom and laboratory space for many years and contains many unique, mature plant specimens. As made clear in the *Valley Advocates v. City of Fresno* case, the District must now assess the historic eligibility of this resource as part of its environmental process. It has not done so.

Addendum. As already emphasized, this is a new project rather than a revision of a prior project. Demolition of the Building 20 complex was not contemplated in any prior environmental review process or project approval. This must be considered anew. But even looking at the specifics of the areas of environmental concern addressed by the new addendum, the analysis is without foundation and cannot support the demolition of the Building 20 complex.

Without time to fully respond to the addendum points, this brief summary will have to do. Again, the Friends object to the lack of adequate notice to respond to the addendum.

Letter to Board of Trustees
August 24, 2011
Page 4

Starting with aesthetics, the addendum fails to acknowledge that the opinions of students and community members as to the aesthetic value of the Building 20 complex, including the threatened South Garden and courtyard, and also the greenhouses and the mid-century Building 20 itself, are substantial evidence that trigger an EIR. The percentage of open space or green lawn on the campus are not qualitatively equivalent to this mature, evocative garden that provides a pastoral setting that is unlike any other area at CSM. Reasonable minds may differ as to whether the space is aesthetically valuable and scenic, but on this subjective topic the District must defer to evidence in favor of environmental review. Its staff's opinions do not trump the opinions of others.

There is a great deal of evidence before the District that the Building 20 complex is of aesthetic and recreational value to your students. It cannot be dismissed as a difference of opinion, as the addendum does. The extensive public input provided to the District suffices as evidence that removal of the Building 20 complex would have a significant adverse aesthetic impact. The location in a hollow provides unique soil and environmental conditions and adds to its aesthetic value. It is a quiet oasis away from the main campus that many can enjoy. The Building 20 complex also enjoys distant views of the bay.

There is no evidence presented that Building 20 cannot be economically rehabilitated as intended by the master plan. The asbestos report shows only that the window seals contain asbestos, which could easily be remedied. ADA access is also a solvable concern. Fifty-year old (and much older) buildings are rehabilitated around California and worldwide, and there are effective, cost-saving methods for doing so. Demolition wastes embodied energy and is the least "green" solution available. The Facilities Condition Index that is claimed as

Letter to Board of Trustees
August 24, 2011
Page 5

68.35% is not justified or even explained, and must be subjected to public review.

The newly proposed new “mini-ecosystems” may impact current systems. Further the feasibility of the vaguely proposed relocation of the demonstration garden is unstudied. There are potential new impacts that must be analyzed.

The addendum’s justification of impacts relating to light, glare, and noise are completely unsupported and inadequate. There is a claim that new lights and noise in the proposed expanded Edison parking lot would be minimal compared with the renovation of Building 20 contemplated by the Facilities Master Plan. No data or analysis is offered to support this statement. Hours of use and potential light and noise impacts must be assessed and presented. Outdoor use of a parking lot is not equivalent to a classroom or greenhouse or garden space.

The addendum also pronounces that Building 20 has been grossly underutilized in recent years. Yet the entire building was occupied by EOPS, faculty and counseling offices, and the classroom was used for day and night instruction. Additional uses by the College science programs should be considered, even if horticultural classes are not ongoing.

In terms of the need for parking, the addendum claims that the current enrollment is 10,000 students. The addendum justifies the demolition of the Building 20 complex based on program reductions related to a drop in the student population, and yet proposes to increase parking for up to 15,000 students. Similarly inconsistent is the addendum’s dismissal of traffic impacts caused by increased parking based on the fact that vehicle trips will be dispersed throughout the day. If there is no new traffic because student trips are dispersed, why is there a need for new parking? Potential traffic impacts require environmental review, which should also consider the pending amphitheater.

Letter to Board of Trustees
August 24, 2011
Page 6

The addendum contends that it will study the impacts of new impervious surfaces at the Edison parking lot in the future. It cannot defer that analysis.

Finally, the addendum states that the Building 20 courtyard landscaping is in poor condition and is not visible from Building 20. In fact, the courtyard landscaping is in good condition. The courtyard supports plants that can grow in a protected environment and include aesthetic and unusual plant specimens not found elsewhere on campus. Some of these plants are shown below:



Please continue your consideration of the demolition of the Building 20 complex to allow an adequate time for review by students and community members. If you make a decision tonight, it should be to set aside the prior approval and addendum, and to require the preparation of an EIR before considering a new project.

Thank you for your consideration.

Sincerely,

Susan Brandt-Hawley

cc: Eugene Whitlock and Sabrina Teller

August 24, 2011

San Mateo County Community College District Board of Trustees

Re: Proposed Demolition of Building 20 Complex

I am the Director of Horticulture at Filoli, a property of the National Trust for Historic Preservation, in Woodside. I am also a member of the advisory committee of the Horticulture Department at the College of San Mateo and have been for a few years. I have a B.S. and M.S. degree in horticulture and graduated from the University of California, Davis. My experience in historic preservation also includes serving as Chair of the Historic Landscapes Committee of the American Public Garden Association, and I was a member of the founding board of the Elizabeth F. Gamble Garden Center in Palo Alto, and serve on their advisory committee.

I am writing to ask the Board not to demolish the Building 20 complex, which would be a great and unnecessary loss to the campus and to the community. In my opinion, the Building 20 complex, including the gardens, greenhouses, and Building 20 classroom and laboratory spaces, is an important historic vernacular landscape and its demolition in the manner proposed would have a significant adverse impact on aesthetics, historic resources, and horticulture.

As defined by the National Park Service in its Preservation Brief 36, a "historic vernacular landscape" is a landscape that evolved through use by the people whose activities shaped it. Through social or cultural attitudes of a community, the landscape reflects the physical, biological, and cultural character of everyday lives. Function plays an important role in vernacular landscapes. The horticulture department gardens have evolved through time shaped by the hands of its students as they have learned. It has also evolved as the needs of the horticulture industry in San Mateo County has changed. Today the gardens have a mature character and they provide a unique natural amenity to the campus which the students appreciate and enjoy.

The Building 20 complex has a rich heritage as a mid-century vernacular landscape that developed for the teaching and training of horticulture. San Mateo County had a major greenhouse industry and the CSM horticulture department originally served the children of these florist families that raised carnations and other cut flowers and potted plants so the children could take over the businesses

and also train employees for the florist businesses. It also trained gardeners for the large local estates like Filoli in the hills of Hillsborough, Burlingame, and Woodside, and provided the increasing home gardening landscape industry with employees. Filoli has trained many CSM horticulture graduates in our gardener and apprentice program, some of whom then worked at Filoli and other estates or have started their own businesses in San Mateo County.

As I understand it, the demolition of the Building 20 complex was not proposed in the 2006 Facilities Master Plan and is a new project. It is important that the environmental setting of this project be fully studied, including the qualification of this near-50 year old site for listing on the California Register of Historical Resources, for which I believe it is eligible. After the environmental setting is fully analyzed, including the aesthetic and recreational features of the South Garden and its biological features, the impacts of demolition should be considered along with alternatives and mitigation measures.

None of these things have been considered by the District in its addendum. This proposed demolition for vague parking needs cannot be justified on the record before you. An environmental impact report should be prepared. After that, I hope this Board will recognize that the demolition of the Building 20 complex is ill-considered and will result in the needless loss of an important and unique resource.

I attended your meeting on July 27th regarding the culmination of the horticulture program and was very disturbed about the lack of opportunity given concerned students and members of the public to explain their views to you. I remain very concerned that this Board is not being given adequate information to make the important decision before you tonight. Please require a public environmental review process to make sure that your discretion is fully informed.

Sincerely,

Lucy Tolmach

86 Cañada Road

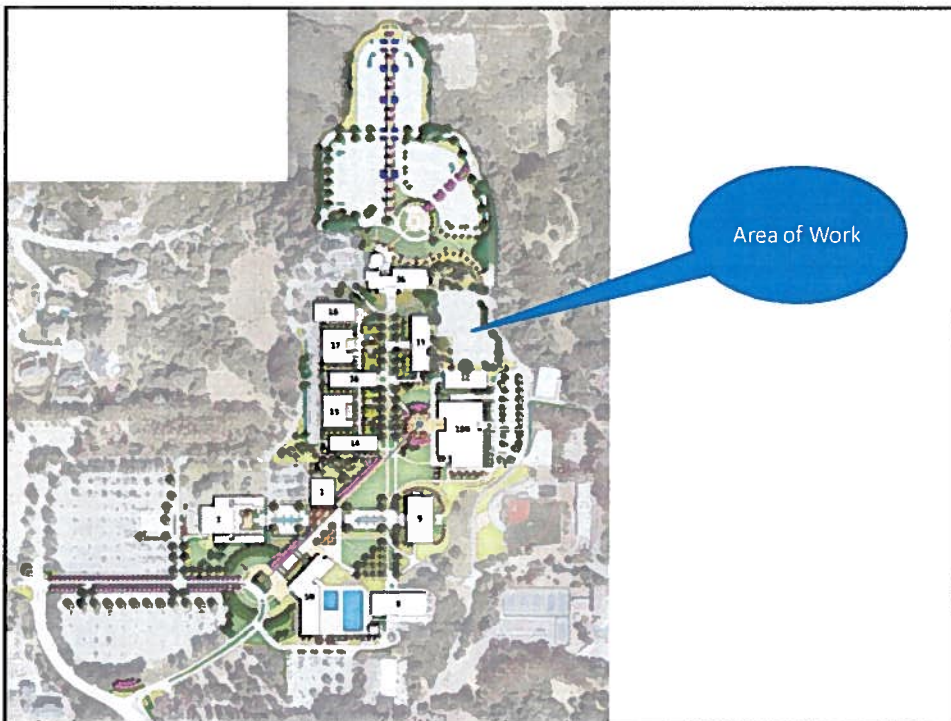
Woodside

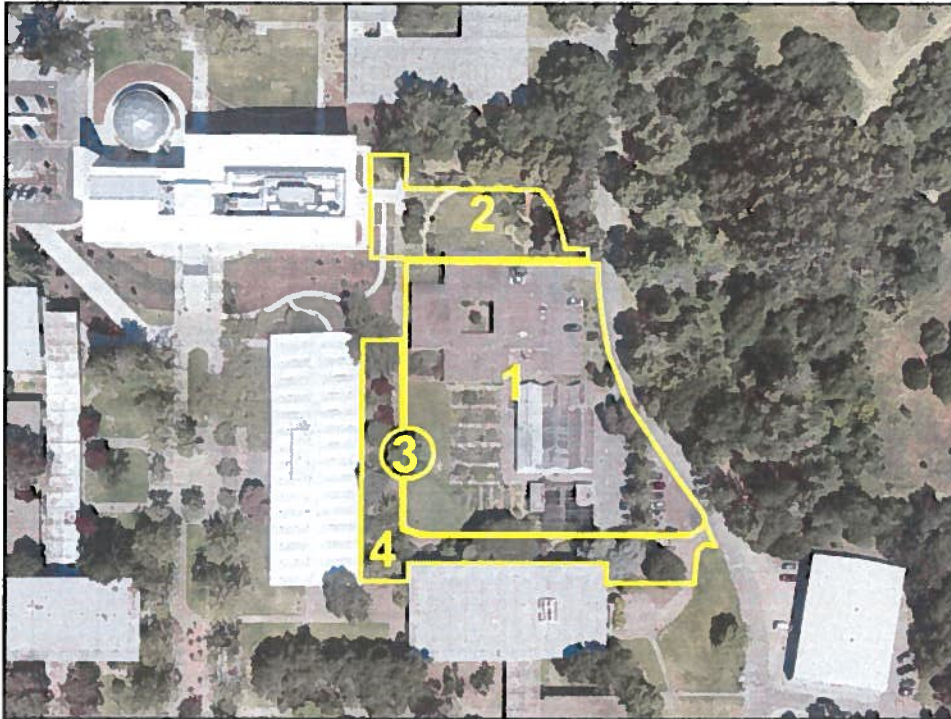
CA 94062

CSM B20 Lath House & Greenhouse

SAN MATEO COUNTY COMMUNITY COLLEGE DISTRICT

August 24, 2011





Building 20 Exterior & Surrounding Area



Building 20 Exterior



Building 20 – Interior Areas



Building 20 – Interior Areas



Building 20 – Interior Areas



Building 20 – Interior Areas



Building 20 – Interior Areas



Building 20 – Interior Areas



Greenhouse Exterior



Greenhouse Exterior



Greenhouse – Interior



Greenhouse – Interior



Lath House



Lath House and Pathways

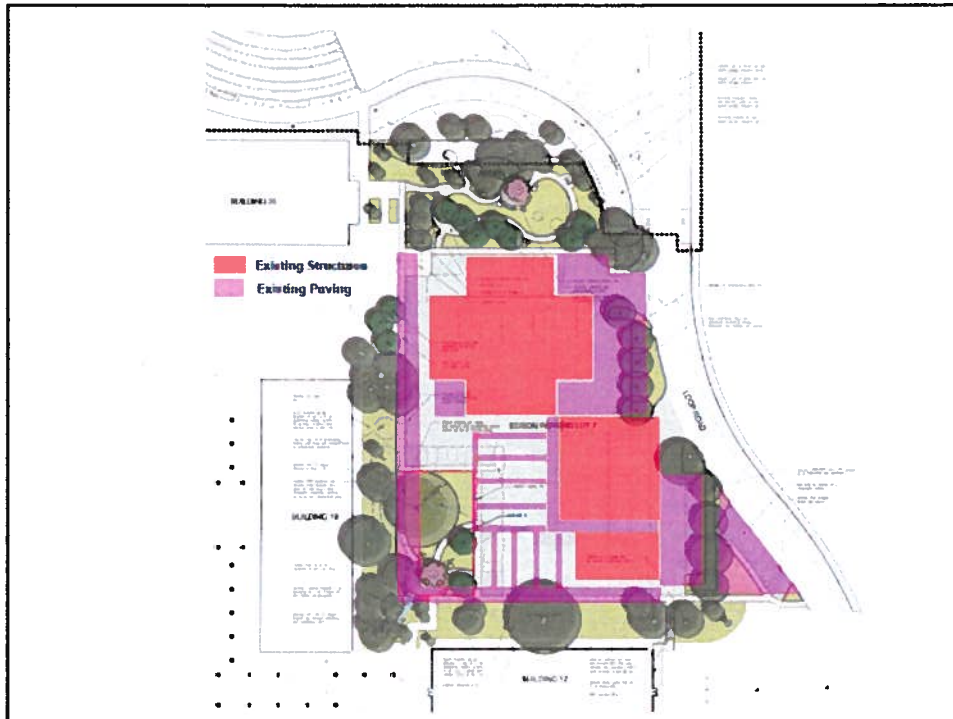


North Garden



Surrounding Area

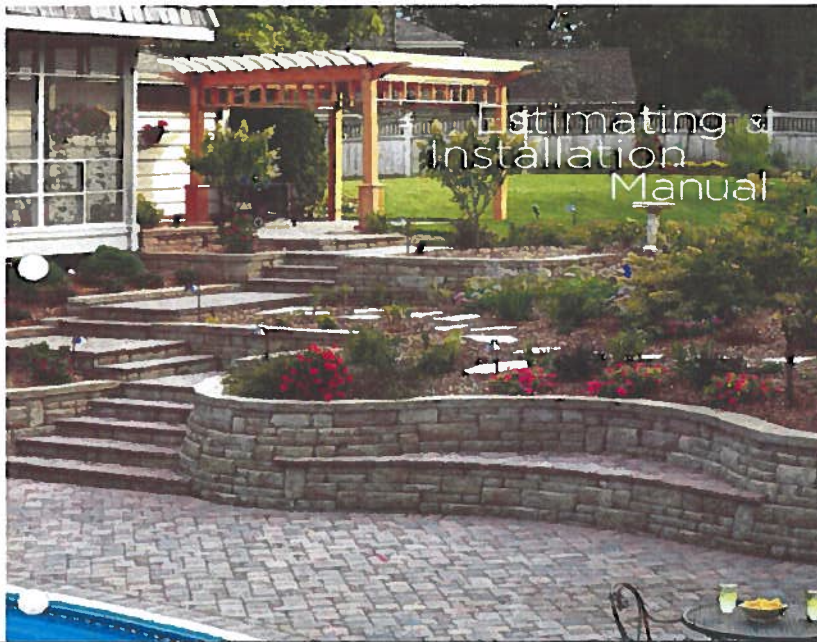




Existing retaining wall

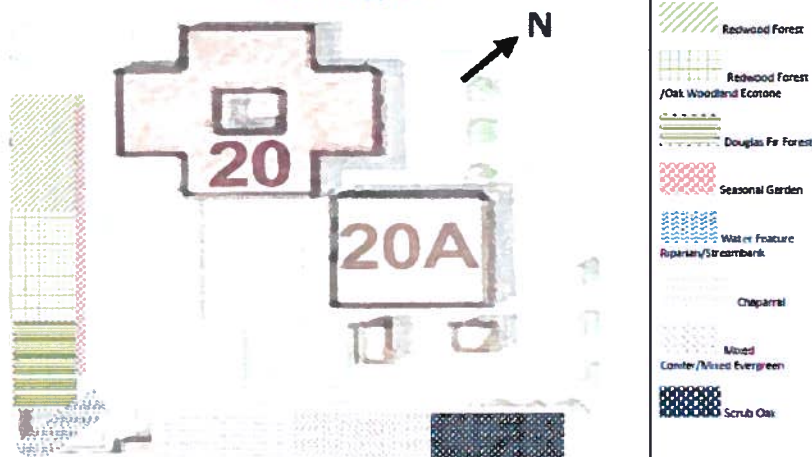


Proposed retaining/seat wall




College of San Mateo Math/Science Division Teaching Garden Conceptual Plan for Hillside North of Building 19 and West of Building 12

May, 2011
Lin Bowie and Dr. Tania Belz




Descriptions of Ecosystem Zones
 Note: Plants listed below are intended to convey concept. Refer to list above for programmed species.

 **Redwood Forest**

Description: This area will be used to educate students on the California Redwood Forest plant community. The opportunities can be improved by leaving the understory, litter and duff intact. Currently, the litter and soil is developed enough to support white coral fungus colonies in the spring. Additions to this ecosystem to improve instruction and add aesthetic value would include:


Scarlet Labelle (*Labella cardinalis*)
 Redwood Sarsel (*Oxalis oregana*)
 Deer Fern (*Blechnum spicant*)
 Giant Western Chain Fern (*Woodwardia fimbriata*)
 Western Sword Fern
 Bracken Fern
 Polypodium
 Five-Finger Fern
 Maidenhair Fern

Succulent Hill-
 Dudleyas
 Sedums

 **Redwood Forest /Oak Woodland Ecotone**


Description: This area is just adjacent /south of the redwood groves. It is a perfect condition to illustrate the ecology of forest openings and edges. Plants that occupy these slightly sunnier locations can provide a bit of a flower show and contrast with the shadier understories of the tree ecosystems. A mix of native and ornamental plants that produce flowers and seeds of botanical interest are already present at this site. Removal of the sweet broom (Additions of compatible plants will improve add additional edge habitat species and also provide more color in this sunnier area

Manzanita (*Arctostaphylos*) (Varieties TBD)
 Grevillea (*Grevillea* varieties TBD)
 Wood Rose (*Rosa gymnocarpa*)
 Woodland Strawberry (*Fragaria californica*)
 Island Coral Bells (*Heuchera majora*)
 Canyon Pink Heuchera (*H. Canyon Pink*)

 **Chaparral**

Description: This area of the hill, now adjacent to Building 12, presents an opportunity to display shrub ecosystems, particularly chaparral. This area currently includes some mature shrub specimens, in addition to some important botanical specimens (Mahonia, Agathis). Additions of shrub species here, in groupings for color, will add additional botanical specimens and improve the aesthetics. Salvias are an important group of Mediterranean plants that occur in a variety of shrub/chaparral ecosystems. They also provide a nice color show with other plants and are important habitat plants. A collection of Salvias, mostly native cultivars, along with other showy plants, including upright and spreading forms, would be a compatible addition to this area.

Cleveland Sage Hybrid Solano Whirly Blue
 Salvia 'Bees Bliss'
 Hummingbird Sage (*Salvia spathacea*)
 Black Sage (*Salvia mellifera*)
 Sticky Monkey Flower (*Mimulus aurantiacus*)
 California Fuchsia (*Epilobium canum* or hybrids)
 Matija Poppy (*Ranunculus coulteri*)
 Deerweed (*Lotus scoparius*)

 **Mixed Conifer/Mixed Evergreen**

Description: an unusual and mature Italian Stone Pine dominates this area of the hill. The understory is acidic due to the needles dropped from this tree. This area gives the opportunity to discuss some of the mixed conifer ecosystems found in California and in the Mediterranean climates and to highlight acid-loving plants. There is room here to introduce some understory native plants that can produce showy flowers, seasonal color, and fruits. These additions would be spaced so that their growth forms, flowering and fruiting habits could be shown.

Sweet Osmanthus (*Osmanthus fragrans*)
 Spice Bush (*Calycanthus occidentalis*)
 Blueberry (*Vaccinium* -variety TBD)
 Coffeeberry (*Rhamnus californica*)
 Western Burning Bush (*Euonymus occidentalis*)
 Saneberry (*Acro rastro*)
 California mock orange (*Philadelphus californicus*)
 Elderberry (*Sambucus nigra*)



Scrub Oak

Description: This area contains some shrubby oaks (*Quercus agrifolia*), a juvenile Interior Live Oak (*Q. wislizeni*) and some mature ceanothus shrubs. Oaks are an important component of many California ecosystems. This area should be left intact, with the addition of some additional examples of shrub-form oaks. The ceanothus collection that will be removed at the north end of this area due to construction should be moved here. Some possible additions are:

Blue Oak (*Quercus douglasii*)
Scrub Oak (*Quercus berberidifolia*)
California Scrub Oak (*Quercus menziesii*)
Ceanothus spp. (protect from deer until established)

ok Charles Fortner
6/1/2011

5/26/2011

OKF
6/1/2011

Gates and Associates

CSM EDISON PARKING LOT PLANT SPECIMENS

No.	Botanical Name	Common Name	Availability	Relocation Code
				Relocation Code 1 = Protect in place
1	Blue Atlas Cedar	Cedrus atlantica glauca	N/A	1
2	Strawberry Tree	Arbutus unedo	N/A	1
3	Stone Pine	Pinus pinea	N/A	1
4	Arctostaphylos densiflora	Vine Hill Manzanita	N/A	1
5	Agave		N/A	1
6	Cryptomeria japonica elegans	Cryptomeria	N/A	1
7	Cryptomeria japonica	Cryptomeria	N/A	1
8	Prunus sp.	Cherry	N/A	1
9	Cupressus macrocarpa	Monterey Cypress	N/A	1
10	Pseudotsuga menziesii	Douglas Fir	N/A	1
11	Metasequoia glyptostroboides	Coast Redwood	N/A	1
12	Sequoia sempervirens	Redwood	N/A	1
13	Pieris formosa foresti	Chinese Pieris		
14	Pieris japonica	Lily of the Valley		
15	Garrya elliptica 'James Roof'	Garrya		
16	Abies arborescens	Tree Abies		
17	Aesculus californica	Buckeye	N/A	1
18	Zizyphus jujube	Jujube	N/A	1
19	Anthracinus	Honeycomb		1
20	Agave americana	Century Plant		
21	Cycas revoluta	Sago Palm		
22	Taxus baccata 'Stridat'	Yew		
23	Lavandula stoechas	Spanish lavender	Yes	
24	Colonnaster latissus	Palmey colonnaster	Yes	
25	Artemisia 'Punta Castle'	Artemisia	Yes	
26	Salvia leucantha	Mexican Sage	Yes	
27	Cistus x shawiana	Rose Rose	Yes	
28	Osmorhiza heterophylla	Holly Leaf Osmorhiza	Yes	
29	Myrica communis 'Variegata'	Variegated Myrtle	Yes	
30	Azalea Hybrid	Flowering Azalea	Yes	
31	Engelmannia californica	Santa Barbara Daisy	Yes	
32	Chrysopsis leucantha	Mexican Orange	Yes	
33	Oliveria stellata 'Blue Cam'	Starry Daisy Bush	Rare	
34	Gazania rigens leucostoma	Trailing Gazania	Yes	
35	Amelanchier alnifolia	Sixty Monkey Flower	Yes	
36	Ulmus minor	Chloron Guava	Yes	
37	Trachelospermum jasminoides	Star Jasmine	Yes	
38	Elonchium japonicum Microphyllum	Variegated Box Leaf	Yes	
39	Variegata	Eucalyptus		
40	Myrica major	Periwinkle	Yes	
41	Brunia albiflora	White Flowered Brunia	Rare	
42	Protea cynaroides	King Protea	Yes	
43	Chrysopsis leucantha	Mexican Orange	Yes	
44	Ulmus minor	Chloron Guava	Yes	
45	Ruscus coccineus	Trailing Ruscus	Yes	

No.	Botanical Name	Common Name	Availability	Relocation Code
				Relocation Code 1 = Protect in place
45	Trochodendron araliifolium	Princess Flower	Yes	
46	Psoralea arguta	Kool Aid Bush	Yes	
47	Agapanthus praecox orientalis	Lily of the Nile	Yes	
48	Achillea millefolium	Yarrow	Yes	
49	Canna Hybrid	Canna	Yes	
50	Canna Hybrid	Canna	Yes	
51	Leontis leonurus	Lions tail	Yes	
52	Bambusa multiplex 'Golden Goddess'	Golden Goddess	Yes	
53	Forsythia x intermedia 'Lynwood Gold'	Forsythia	Yes	
54	Trachelospermum jasminoides	Star Jasmine	Yes	
55	Euryops virgatus	Daisy	Yes	
56	Psoralea arguta	Kool Aid Bush	Yes	
57	Pteris aquilina	Tawhiti	Yes	
58	Colsonema pulchrum 'Sunset Gold'	Breath of Heaven	Yes	
59	Salvia leucantha	Sage	Yes	
60	Brunia albiflora	White Flowered Brunia		
61	Sapum sebiferum	Chinese Tallow Tree	Yes	
62	Iris Hybrid	Bearded Iris	Yes	
63	Chionodoxa myriophylla 'Ugandensis'	Blue Glory Flower	Yes	
64	Pieris formosa foresti	Chinese Pieris	Rare	
65	Dahlia imperialis	Tree Dahlia	Yes	
66	Rumex crispus	Leathery Fern	Yes	
67	Araucaria heterophylla	Norfolk Island Pine	Yes	
68	Iris Hybrid	Bearded Iris	Yes	
69	Iris Hybrid	Bearded Iris	Yes	
70	Iris Hybrid	Bearded Iris	Yes	
71	Melanchthus coccineus	Tufted Honey Flower	Yes	
72	Salvia madrensis	Sage	Yes	
73	Viburnum opulus 'Sterile'	Eastern Snowball	Yes	
74	Pieris japonica	Lily of the Valley Shrub	Yes	
75	Salvia leucantha	Sage	Yes	
76	Sisyrinchium thuratum	MOON	Yes	
77	Miscanthus sinensis 'Zebrinus'	Zebra Grass	Yes	
78	Cupressus cashmeriana	Cypress	Yes	
79	Erica caraculata	Channelled Heath	Yes	
80	Centaurea ruber	Road Valerian	Yes	
81	Engelmannia californica	Santa Barbara Daisy	Yes	
82	Eucalyptus citriodora	Argyle Apple	Yes	
83	Salvia leucantha	Mexican Sage	Yes	
84	Cupressus cashmeriana	Cypress	Yes	
85	Viburnum plicatum tomentosum	Doublefile Viburnum	Yes	
86	Crocosmia x crocosmiflora	Montbretia	Yes	
87	Widdingtonia cedarbergensis	Clan William Cedar	Rare	
88	Hesperomela argentea	Tayon	Yes	
89	Crocosmia x crocosmiflora	Montbretia	Yes	
90	Zantedeschia aethiopica	Common Calla	Yes	
91	Chorisia speciosa	Silk Floss Tree	Yes	

5/26/2011

5/26/2011

CAF
6/1/2011

No.	Botanical Name	Common Name	Availability	Relocation Code
				Relocation Code
				1 = Protect in place
92	Zantedeschia aethiopica	Common Calla	Yes	
93	Zantedeschia aethiopica	Common Calla	Yes	
94	Zantedeschia aethiopica	Common Calla	Yes	
95	Zantedeschia aethiopica	Common Calla	Yes	
96	Sasa pyramidea	Bamboo	Rare	
97	Senecio cineraria	Daisy Miter	Yes	
98	Anemone x hyemalis	Cape Marlow	Rare	
99	Lavandula angustifolia	English Lavender	Yes	
100	Phormium tenax Jack Spratt	New Zealand Flax	Yes	
101	Juniperus procumbens 'Nana'	Dwarf Japanese Juniper	Yes	
102	Amaranthus maritima	Common Thrift	Yes	
103	Coronilla grandiflora	MCN	Yes	
104	Rhamnus frangula 'Asplenifolia'	Alder Buckthorn	Yes	
105	Codonopsis pulchrum 'Sunset Gold'	Breath of Heaven	Yes	
106	Teucrium x lucidum	Germander	Yes	
107	Aloe x principis	Aloe	Rare	
108	Kinifolia urata	Red Hot Poker	Yes	
109	Chamaejasme sp.	Howe's Quince	Yes	
110	Festuca brachyphylla	Alpine Fescue	Yes	
111	Garrya elliptica James Roof	Coast Satsabel	Yes	
112	Juniperus conferta	Shore Juniper	Yes	
113	Tagetes lemmonii	Copper Canyon Daisy	Yes	
114	Heterotheca sessiliflora	Goldenaster	Yes	
115	Aloe saponaria	Soap Aloe	Rare	
116	Aloe saponaria	Soap Aloe	Rare	
117	Aloe saponaria	Soap Aloe	Rare	
118	Juniperus procumbens Bar Harbor	Juniper		
119	Dietes bicolor	Butterfly Iris	Yes	
120	Rhamnus frangula 'Asplenifolia'	Alder Buckthorn	Yes	
121	Santolina chamaecyparissus	Lavender Cotton	Existing	
122	Rosmarinus officinalis	Rosemary	Yes	
123	Epilobium canum	California Fuchsia	Yes	
124	Thymus x citriodorus 'Aureus'	Lemon Thyme	Yes	
125	Salvia apiana	White Sage	Yes	
126	Phlomis frutescens	Jerusalem Sage	Yes	
127	Hemerocallis sp.	Daylily	Yes	
128	Alnus rhombifolia	White Alder	Yes	
129	Dieles vegeta	Fortnight Lily	Existing	
130	Tenaxium vulgare	Tansy	Yes	
131	Baccharis pilularis 'ar. Pallas'	Dwarf Coyote Brush	Yes	
132	Ficaria verna	Principle Guinea	Yes	
133	Juniperus sabiana 'amaricifolia'	Tamar Juniper	Rare	
134	Trachycarpus fortunei	Windmill Palm	Yes	
135	Salvia leucantha	Mexican Bush Sage	Yes	
136	Agave americana	Century Plant	Yes	
137	Cotoneaster dammeri 'Lowfast'	Cotoneaster	Yes	
138	Stachys byzantina	Italian Cypress	Yes	
139	Aloe arborescens	Aloe	Yes	

No.	Botanical Name	Common Name	Availability	Relocation Code
				Relocation Code
				1 = Protect in place
140	Euphorbia myrsinites	Euphorbia	Yes	
141	Gazania rigens 'Iuculaena'	Trailing Gazania	Yes	
142	Metrosideros excelsus	New Zealand Christmas Tree	Yes	
143	Cynara scolymus	Artichoke	Yes	
144	Lampranthus aurantiacus	Ice Plant	Yes	
145	Clivia miniata	Kaffir Lily	Yes	
146	Cedrus occidentalis	Western Redbud	Yes	
147	Callistemon citrinus	Lemon Bottlebrush	Yes	
148	Cercidiphyllum japonicum	Katsura Tree	Yes	
149	Hydrangea quercifolia	Oak Leaf Hydrangea	Yes	
150	Fuchsia Hybrid	Fuchsia	Yes	
Redwood Forest				
151	Lobelia cardinalis	Scarlet Lobelia	Yes	
152	Oxalis oregana	Redwood Sorrel	Yes	
153	Blachium sp.	Deer Fern	Yes	
154	Woodwardia imbricata	Giant Chain Fern	Yes	
155	Polystichum munitum	Western Sword Fern	Yes	
156	Pendulum sp.	Broken Fern	Yes	
157	Polypodium sp.	Polypody	Yes	
158	Adiantum aleuticum	Five Finger Fern	Yes	
159	Adiantum sp.	Maidenhair Fern	Yes	
160	Dudleya sp.	Dudleya	Yes	
161	Sedum sp.	Stonecrop	Yes	
Redwood/Oak Woodland Ecotone				
162	Arctostaphylos sp.	Manzanita	Yes	
163	Grevillea sp.	Grevillea	Yes	
164	Rosa gymnocarpa	Wood Rose	Yes	
165	Fragaria californica	Woodland Strawberry	Yes	
166	Heuchera mauna	Island Coral Bells	Yes	
167	Heuchera 'Canyon Pink'	Canyon Pink Heuchera	Yes	
Douglas Fir Forest				
168	Woodwardia imbricata	Giant Chain Fern	Yes	
169	Heuchera mauna	Island Coral Bells	Yes	
170	Heuchera 'Canyon Pink'	Canyon Pink Heuchera	Yes	
171	Arctostaphylos columbiana	Harry Manzanita	Yes	
172	Arctostaphylos cuneata	Holly Manzanita	Yes	
Riparian Streambank				
173	Lilium pardalinum	Leopard Lily	Yes	
174	Adiantum sp.	Maidenhair Fern	Yes	
175	Epipactis gigantea	Stream Orchid	Yes	
176	Rhododendron occidentale	Western Azalea	Yes	
177	Equisetum telmateia	Equisetum	Yes	
Chaparral				
178	Salvia 'Whisper Blue'	Cleveland Sage	Yes	
179	Salvia 'Bees Bliss'	Sage	Yes	
180	Salvia 'Spathacea'	Humboldt Sage	Yes	
181	Salvia mollis	Black Sage	Yes	
182	Mimulus aurantiacus	Sticky Monkey Flower	Yes	
183	Epilobium canum	California Fuchsia	Yes	
184	Romneya coulteri	Mallory Poppy	Yes	
185	Lotus scoparius	Doornard	Yes	

5/26/2011

CAP
6/1/2011

No	Botanical Name	Common Name	Availability	Relocation Code
				Relocation Code
				1 = Plotted in place
	Mixed Conifer/Evergreen			
186	Osmorhiza fragrans	Sweet Osmorhiza	Yes	
187	Calycanthus occidentalis	Spice Bush	Yes	
188	Vaccinium sp.	Blueberry	Yes	
189	Rhamnus californica	Coffeeberry	Yes	
190	Fuerymyus occidentalis	Washim Burning Bush	Yes	
191	Actaea rubra	Baneberry	Yes	
192	Philadelphus californica	California Mock Orange	Yes	
193	Sambucus nigra	Elderberry	Yes	
	Scrub Oak			
194	Quercus douglasii	Blue Oak	Yes	
195	Quercus berberidifolia	Scrub Oak	Yes	
196	Quercus dumosa	California Scrub Oak	Yes	
197	Ceanothus sp.	Ceanothus	Yes	



August 24, 2011

Board of Trustees
San Mateo Community College District
3401 CSM Drive
San Mateo, CA 94402

Dear Trustees:

I am not able to attend tonight's meeting but am writing to protest the use of the Addendum to take the place of a full EIR. The broad community should have an opportunity to weigh in on this important decision and sufficient time to gather information about your proposed actions.

Your decision to raze the historic CSM gardens, classrooms, and greenhouses for a parking lot certainly needs a full and rigorous evaluation. Your conclusion that parking is needed where the gardens now stand is not apparent by driving around the campus.

I visited the CSM campus Monday and Tuesday, both in the morning and afternoon, at times when the campus parking lots should be full. This week is probably one of the two worst weeks of the year, as students are on campus to add and drop classes and finalize registration.

While most student lots were full or nearly full between 10:45 – 11:45 am, those same student lots were only about half-full between 1:30 – 2:30 in the afternoon. The notable exception was the newly constructed, immense, lower Hillsdale lot; it was essentially empty both days.

Staff/faculty parking doesn't appear to be a problem either mornings or afternoons, with ample parking in the Beethoven lots and some parking in Galileo D, close to the gardens and buildings you intend to raze for more parking.

Nor should demand for parking increase given State funding problems as well as decisions of the Trustee board that have resulted in:

- programs being discontinued, e.g., French, ASL, Horticulture
- classes being consolidated, e.g., Spanish 111 and Conversational Spanish (801)
- increasing numbers of classes offered online, e.g., Film 200, rather than on campus

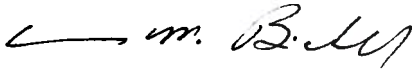
The EIR would also explore alternate parking sites, for example, the construction area just east of the Campus Center or the large flat area just north and east of the Galileo lots. A full EIR would look at all aspects of the parking situation, current and projected, and should also examine the effect of class scheduling on parking demand. Perhaps simply shifting a few classes from mornings to afternoons would

eliminate the student parking congestion seen in the mornings. A full EIR might also explore moving the Fire Academy, or other programs, to the Lower Hillsdale parking lot, freeing up the Academy space for Campus Center parking.

But, again, these are issues that need to be addressed in a full EIR with advance notice to the community and to parking experts. Three days does not provide such an opportunity and makes it appear the Board of Trustees doesn't care about community input. It is, after all, the taxpayers' money that is being spent, and we certainly owe them the benefit of a full analysis.

I have attached copies of a few photos showing some of the parking lots photographed August 22 and 23 on the CSM campus.

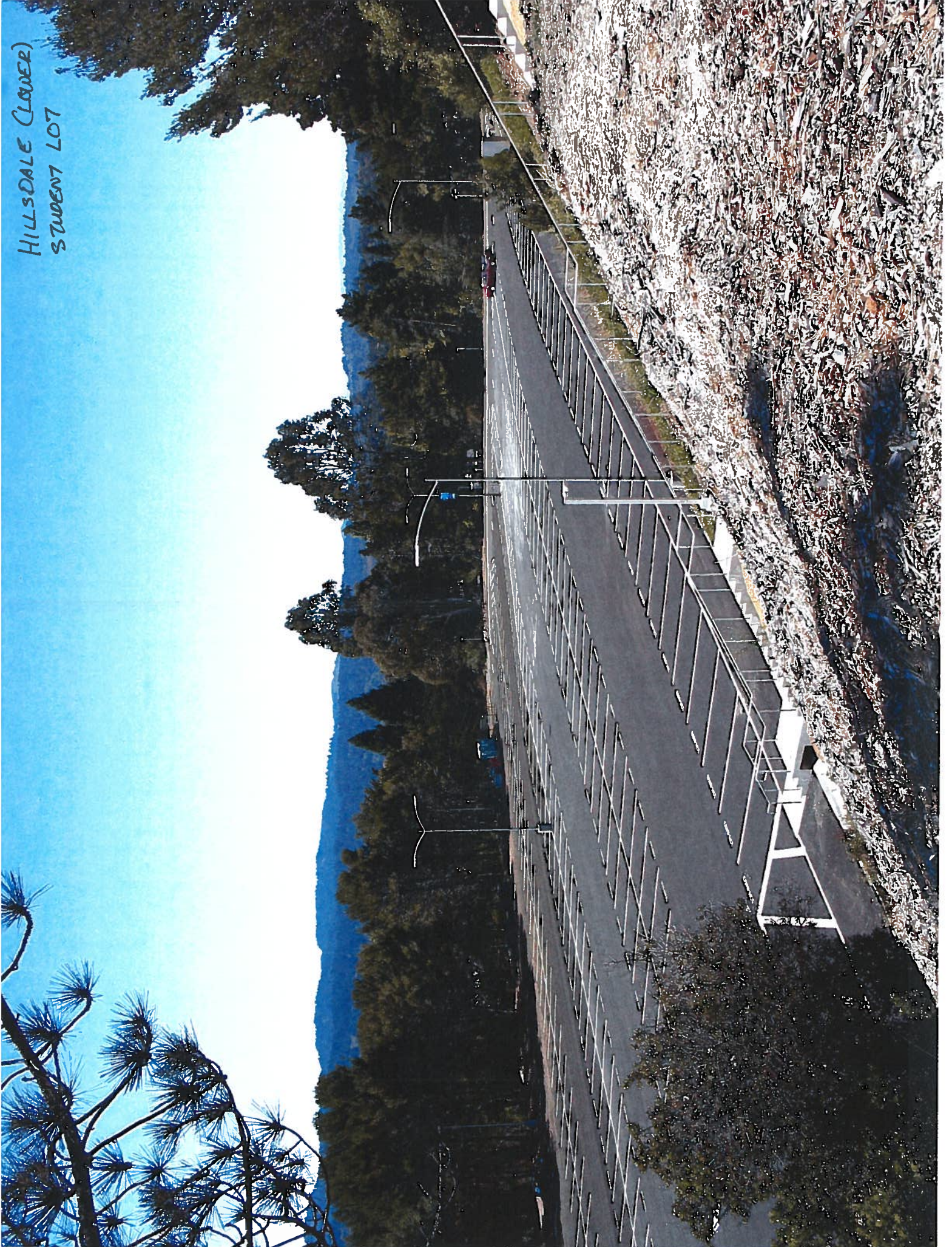
Kindest wishes,

A handwritten signature in cursive script, appearing to read "Donna M. Bischoff".

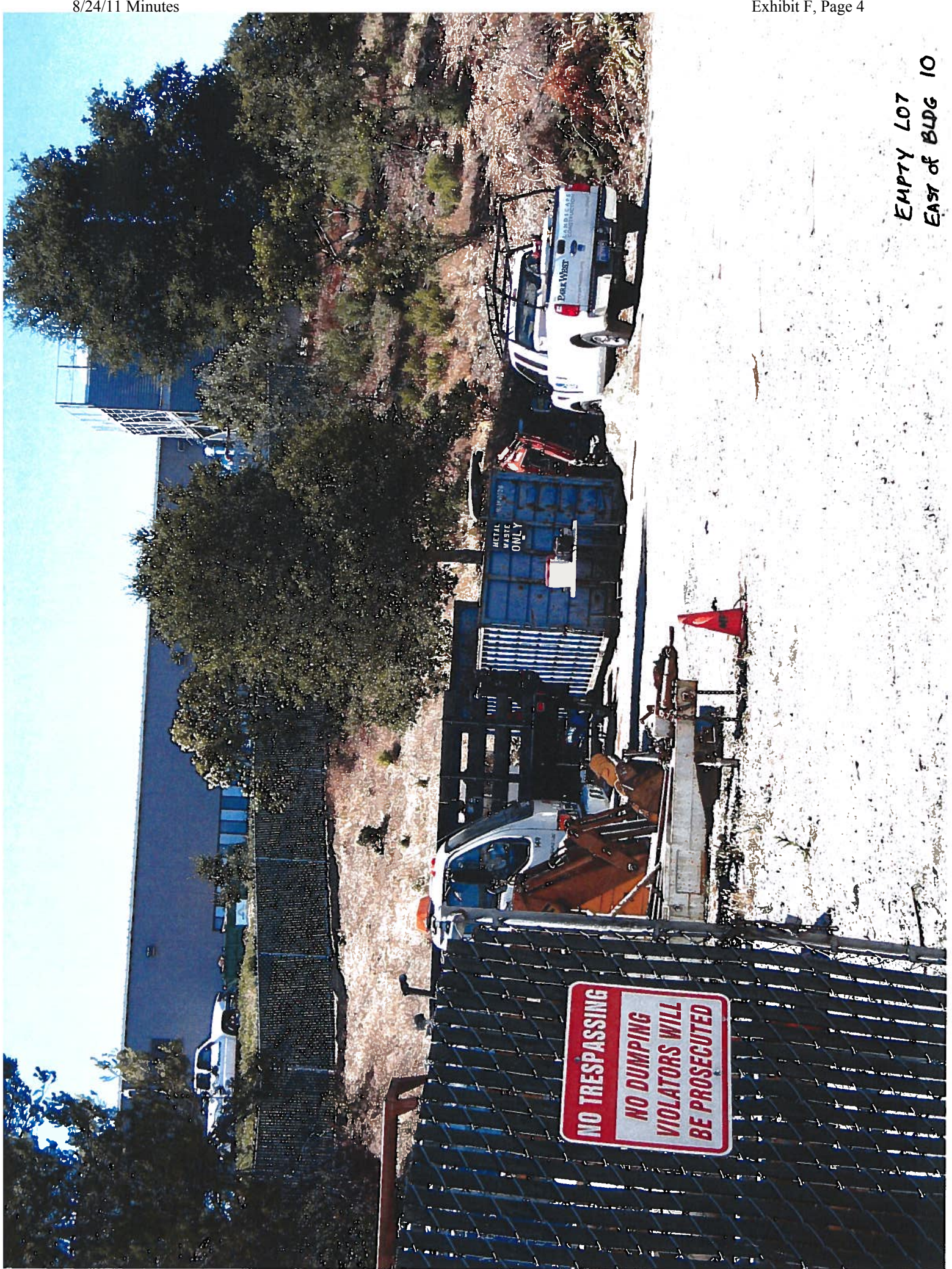
Donna M. Bischoff
915 31st Avenue
San Mateo, CA 94403

Attachments (8)

HILLSDALE (LOWER)
STUDENT LOT



EMPTY LOT
EAST of BLDG 10

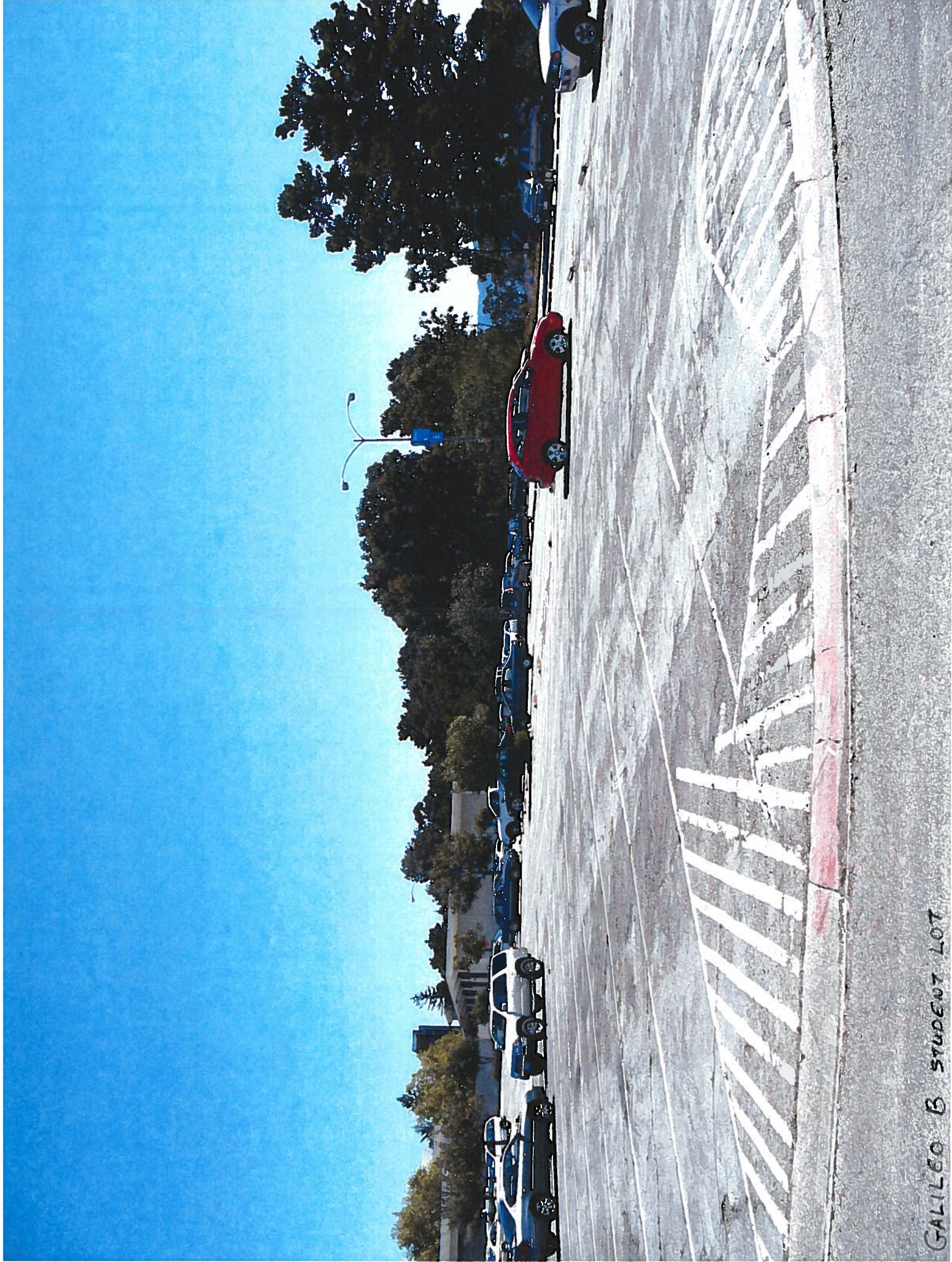






MARIE
CURIE STAFF PARKING





GALILEO B STUDENT LOT



BEETHOVEN (WEST)
STAFF PARKING 8/22/11



BETHLEHEM (WEST)
STAFF PARKING 8/23/11